

247-1
MAY



THUNDER BAY TRUCK CENTRE, Inc.

WWW.TBTC.CA

EMAIL: MAIL@TBTC.CA



Peterbilt Thunder Bay
1145 Commerce Street
Thunder Bay, ON P7E 6E8
(807) 577-5793 or (800) 465-5030
Fax: (807) 577-8918

Peterbilt Fort Frances
505 McIrvine Road
Fort Frances, ON P9A 3X7
(888) 889-2344 or (807) 274-7936
Fax: (807) 274-2813

Peterbilt Dryden
70 Keith Avenue
Dryden, ON P8N 3K8
(807) 223-7577 or (844) 223-7577
Fax: (807) 223-8482

Peterbilt Longlac
106 Hamel Ave.
Longlac, ON P0T 2A0
(807) 876-2687
Fax: (807) 876-2570

Sold To: ZATTI HAULAGE LTD.
1451 NELSON AVE.

THUNDER BAY, ON P7J 1M4

Number
Phone 807 475-7962
P.O. NO.
Complete 03-12-26
Open Date 01-21-26

REPAIR ORDER NUMBER
w84487
Date: 03-12-26
SVC WRITER
JP*HJ

CUSTOMER INVOICE REPRINT

Page: 1 of 3

SERIAL NO. 1XPXD40X9MD745611		UNIT NO. 89		MILEAGE 567707	
YEAR / MAKE / MODEL / 2021 / Peterbilt / 389				ENG HRS 11124.0	
ENGINE / SERIAL CUM X15 / 80263025				LICENSE BP 11455	
TRANS / SERIAL RTLO18918B / P1349131				CPL/ARRG P011	
RXLS MODEL/SERIAL		RT46-164E/FOR06482726, RT46-164E/FOR06482727			
SELL DLR		DEL DATE	08-25-20	DEL MILE	3035

1 CHECK CAUSE OF OIL PAN LEAKING

CAUSE:

LEAKING

CORRECTION:

DRAINED OIL. PAINTED NEW OIL PAN. INSTALLED NEW OIL PAN. FILLED WITH OIL.

TOTAL LABOR	840.00
TOTAL PARTS	3,623.73
TOTAL MHSW FEE	1.70

Qty	Part Number	Description	List	Unit	Extended
1	3690567CUM	PAN,OIL	3,212.01	2,730.21	2,730.21
1	3163075	RED PAINT	63.56	55.85	55.85
1	4026684CUM	GASKET,OI	475.43	404.12	404.12
1	LF14001NNFLG	FILTER-LU	150.73	114.55	114.55
44	500010047C	ROTELLA T	8.05	7.25	319.00
1	3163075&	F.E.T.	0.35	0.35	0.35
1	LF14001NNFLG&	F.E.T.	1.35	1.35	1.35

2 CHECK CAUSE OF REAR TAIL LIGHT OUT

CAUSE:

BROKEN WIRES

CORRECTION:

VERIFIED COMPLAINT.- TAIL LIGHT OUT. CHECKED PLUG AND IT HAD RUBBED THROUGH AND WAS COMPLETELY ROTTEN. REMOVED PLUG AND HARD WIRED ALL WIRES. TAIL LIGHT WAS STILL DIM. FOUND TWO OTHER BROKEN WIRES NEAR LIGHT BOX. REPAIRED WIRES. LIGHTS WORK. WRAPPED UP REPAIRED SECTIONS AND TIED EVERYTHING BACK UP.

TOTAL LABOR	245.00
TOTAL PARTS	24.78

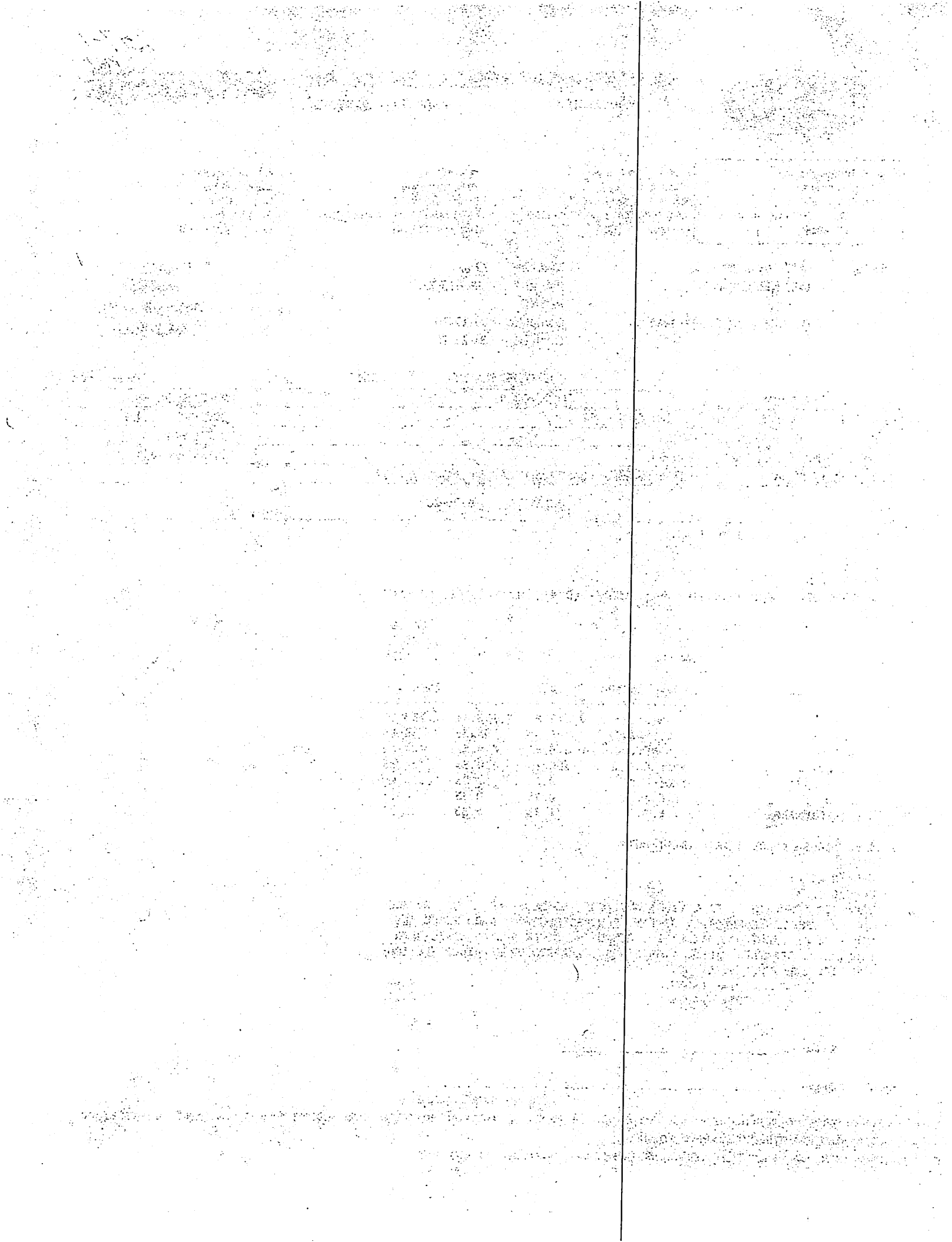
Customer Print Name: _____

Customer Signature: _____ Date: _____

REPRINT GST# R105278493

RETURNS: PARTS MUST BE RETURNED WITH 30 DAYS OF PURCHASE, ALL RETURNED ITEMS ARE SUBJECT TO A 10% HANDLING CHARGE WHEN SUPPLIED AS ORDERED AND MUST BE ACCOMPANIED BY OUT PACKING SLIP OR INVOICE.

TERMS: NET 30, 2%PER MONTH 24% PER ANNUM SERVICE CHARGE ON ALL OVERDUE ACCOUNTS.



Work Order
w84487

Invoice Date: 03-12-26
Page 2 of 3

Qty	Part Number	Description	List	Unit	Extended
5	TBBST	SHRINK CO	7.48	3.54	17.70
2	TBBST	SHRINK CO	7.48	3.54	7.08

3 CHECK CAUSE OF L/S DOOR NOT CLOSING PROPERLY - CUSTOMER SUPPLYING PARTS
CAUSE:
DOOR LATCH
CORRECTION:
FOUND DOOR HANDLE HARD TO MOVE / SEIZING UP. SPRAYED WITH PENETRATING OIL AND FREED HANDLE UP. REMOVED DOOR LATCH. INSTALLED DOOR LATCH. REMOVED AND REPLACED DOOR STRIKER. HAD TO USE AIR HAMMER TO REMOVE SCREWS.

TOTAL LABOR 210.00
TOTAL PARTS 64.47

Qty	Part Number	Description	List	Unit	Extended
1	R56-6017	STRIKER-D	67.86	64.47	64.47

4 CHECK CAUSE OF POWER STEERING PUMP LEAKING AROUND MOUNTING BRACKET
CAUSE:
POWER STEERING PUMP GASKET
CORRECTION:
REMOVED POWER STEERING PUMP. CLEANED SURFACES. REPLACED GASKET. INSTALLED POWER STEERING PUMP. CLEANED OFF SURROUNDING AREA. CLEANED UP.

TOTAL LABOR 87.50
TOTAL PARTS 6.96

Qty	Part Number	Description	List	Unit	Extended
1	4988280CUM	GASKET,HY	8.19	6.96	6.96

5 CHECK CAUSE OF D/S WINDOW NOT GOING DOWN
CAUSE:
WINDOW REGULATOR SEIZING
WINDOW CHANNEL FELT WORN IN
CORRECTION:
VERIFY CUSTOMER COMPLAINT.WINDOW START GETTING STUCK HALFWAY UP. REMOVE ALL DOOR SKIN TRIM, SWITCHES AND SCREWS. REMOVE PLASTIC DOOR PANEL AND REMOVE INNER METAL DOOR SKIN SCREWS AND REGULATOR MOUNT SCREWS. REMOVE INNER DOOR SKIN AND INSPECT FUNCTION OF REGULATOR WHILE OPERATING.INNER REGULATOR RAIL SEIZING. REMOVE AND REPLACE REGULATOR.WINDOW MOVES BETTER BUT STILL SLOW. INSPECT GLASS INNER CHANNEL FELT.CHANNEL AT REAR OF DOOR WORN IN FROM SEIZING REGULATOR.QUOTE CHANNEL FELT. REMOVED WINDOW. REMOVED CHANNEL. INSTALLED NEW CHANNEL. INSTALLED WINDOW. INSTALLED INNER DOOR SKIN. INSTALLED OUTER DOOR SKIN. CHECKED LATCH AND WINDOW FUNCTION. GOOD.

TOTAL LABOR 1,172.50
TOTAL PARTS 336.06

Qty	Part Number	Description	List	Unit	Extended
1	WNR021000-L	REGULATOR	223.06	211.91	211.91
1	R70-6013-2200	CHANNEL-G	129.76	123.27	123.27
2	HWC07524	SCREW-MAC	0.54	0.44	0.88

6 CHECK CAUSE OF INTERIOR LIGHTS NOT COMING ON WHEN OPENING DOOR
CAUSE:
FUSE PANEL ROTTEN AT FUSE FOR DOOR JAM SWITCHES
ROTTEN FUSES
CORRECTION:
CHECKED FOR INTERIOR LIGHTS NOT TURNING ON WITH DOORS OPENING. FOUND ALL INTERIOR LIGHTS WORK MANUALLY. ISSUE IS ON CONTROL CIRCUIT FOR DOOR JAM SWITCHES. CHECK FUSE. FOUND FUSE OKAY. CHECKED FOR POWER IN

**Work Order
w84487**

Invoice Date: 03-12-26
Page 3 of 3

FUSE PANEL. NO POWER IN PANEL FOR FUSE. PANEL HAS CORROSION AROUND FUSE. LIKELY A CORROSION ISSUE ON BACKSIDE OF PANEL. DISCUSS REPAIR WITH CUSTOMER. INSTALL FUSE TAP TO BACK FEED POWER INTO CIRCUIT FOR DOOR LIGHTS. TEST. LIGHTS WORK. FOUND LIGHTS WORK WITH JUMPER INSTALLED BUT DONT SHUT OFF. BRING UP SCHEMATICS FOR INTERIOR LIGHTS AND FOUND POWER TO FUSE SUPPLIED BY CECU. CHECKED CECU FUSES AND FOUND BATTERY POWER FUSE HEAVILY CORRODED. REMOVED FUSE AND REPLACE WITH NEW. LIGHTS WORK NOW. INSPECT DASH AND FOUND L/S WINDSHIELD LEAKING CAUSING CORROSION AT FUSE PANEL. ADVISED CUSTOMER WINDSHIELD WILL HAVE TO BE REPLACED AND RESEALED.

TOTAL LABOR 280.00
TOTAL PARTS 16.77

Qty	Part Number	Description	List	Unit	Extended
1	CN29550	TERMINAL-	3.53	3.00	3.00
1	CN29550	TERMINAL-	3.53	3.00	3.00
1	82-2213	FUSE	12.78	8.63	8.63
1	M1N1S	FUSE-15 A	2.68	2.14	2.14

7 SUBLET TO FLOYDS TO REPLACE L/S AND R/S WINDSHIELDS
CAUSE:

CORRECTION:

REPLACED L/S AND R/S WINDSHIELDS

TOTAL PARTS 152.20
TOTAL SUBLET LABOR 421.74

Qty	Part Number	Description	List	Unit	Extended
1	DW1036-30	GLASS-PET	77.07	69.36	69.36
1	DW1037-30	GLASS-PET	77.07	69.36	69.36
1	28-00236-0000	SEAL - BU	13.76	13.48	13.48
1	SUBLET LABOR	GLASS	519.75	421.74	421.74

SUBLET TO FLOYDS TO REPLACE WINDSHIELDS

MISCELLANEOUS SUPPLY 277.84

INV-ENVIRONMENTAL 1.70
SLS-SVC CUST LBR TRK 2,835.00
SLS-SUNDRIES 277.84
SLS-SVC SUBLET REPR 421.74
SLS-PTS SHOP 4,224.97
H.S.T. R105278493 1,008.96
PLEASE PAY THIS TOTAL 8,770.21