

B08-7



ANSWER TRAILER RENTALS & SALES

Physical Address:  
45 Diamond Ave.  
Spruce Grove, AB  
T7X3A9  
Phone: 780-960-8818  
GST 831253711RT0001

Mailing Address:  
PO Box# 3693  
Spruce Grove, AB  
T7X3A9  
Fax: 780-960-8901  
ADMIN@ATRL.CA

Invoice # 34185

Work Order # 18900

**Customer No:** 1472906 AB Ltd O/a Eagle Terrace Transport  
**Customer PO:**  
Attn: Rick Kuzyk  
1472906 AB Ltd O/a Eagle Terrace Transport  
16221 123 Ave NW  
Edmonton, AB T5V 1N9  
**Home** (780) 453-6627  
**Email** ap@eagleterrace transport.com  
  
**Term** Due on Receipt

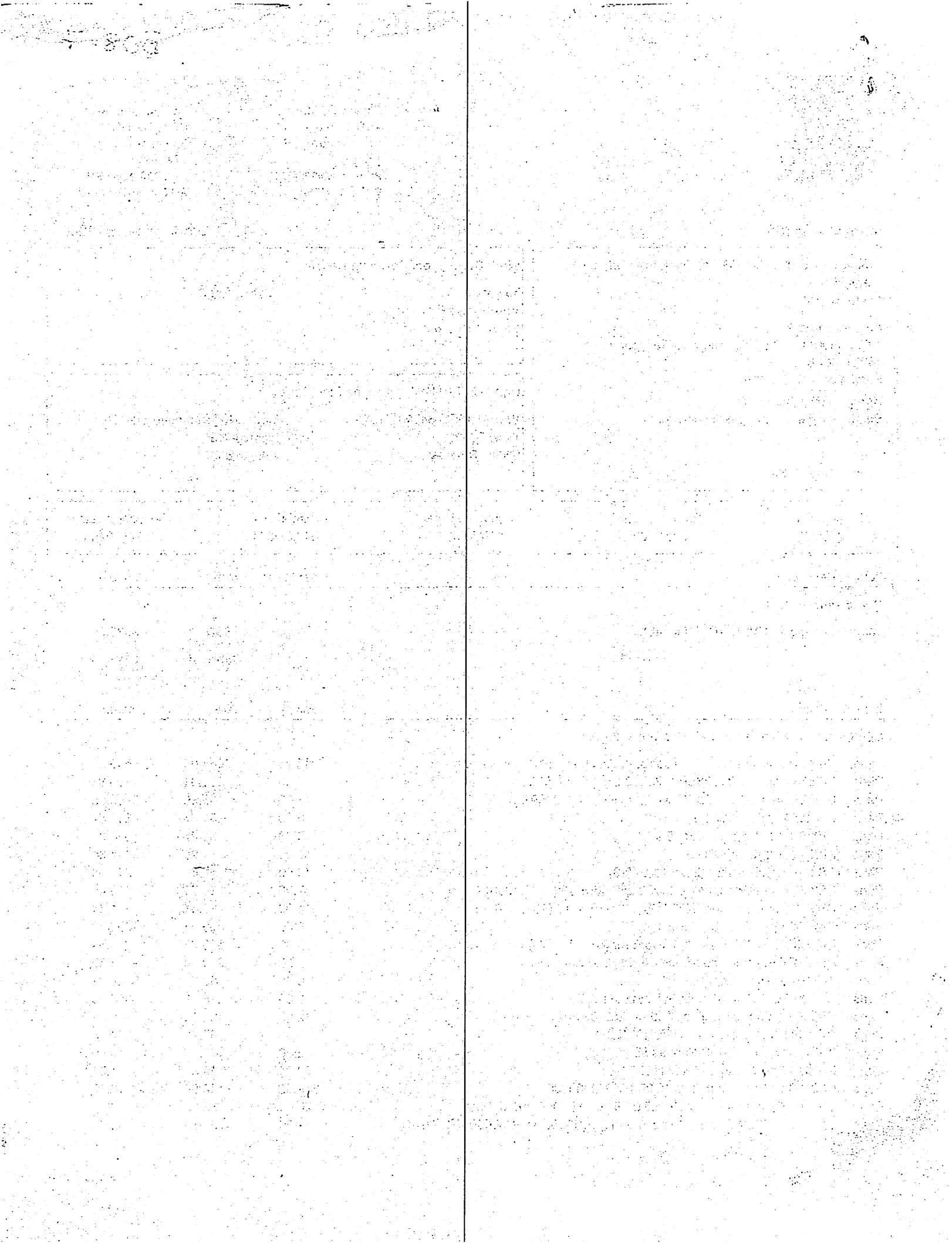
**Work Order Type:** Customer Repairs  
**Team:** Tech 1: Randy Semeniuk  
**Authorizer:** Rick Kuzyk  
**Service Writer:**

**Unit #** ETT 011164 Trombone Step Deck  
**VIN:** 2T9DF513491011164 **Model No:** Trombone Step Dec  
**Year:** 2009 **License No:**  
**Make:** Thruway **Mileage:** 1

Created Date	Promised Date	Schedule Date	Finished Date	Cashiered Date
11/27/2023	11/27/2023	11/27/2023	01/08/2024	01/02/2024

Item	Description	Quantity	Rate	Amount
<b>Complaint:</b> CVIP A>				
Labor	Completed CVIP A (CV7950945)	1.00	\$325.00	\$325.00
			<b>Subtotal</b>	<b>\$325.00</b>

Item	Description	Quantity	Rate	Amount
<b>Complaint:</b> S-cams beyond spec, replace s-cams.				
Labor	Replaced all s-cams, wheel seals, brake shoe, anchor pins and clevis.	18.25	\$145.00	\$2,646.25
Parts	E-5526 Cam 1-1/2 X 28SP X 23-1/2 LH ( CAM159L )	3.00	\$63.61	\$190.83
Parts	E-5527 Cam 1-1/2 X 28 SP X 23-1/2 RH ( CAM159R )	3.00	\$65.45	\$196.35
Parts	04-300 Washer (CS3119)	6.00	\$1.77	\$10.62
Parts	22946 1.188 Retainer Ring Ext	6.00	\$1.47	\$8.82
Parts	22951 1 1/2" SNAP RING	6.00	\$1.89	\$11.34
Parts	CS3116 Cam Washer (29-1311,E-719)	10.00	\$1.65	\$16.50
Parts	CS3107 Cam Washer 1.50"ld X 2.25" Od(E-1565, 29-1308)	7.00	\$0.78	\$5.46
Parts	CS3102 Cam Washer 1.25"/1.88 0.060 (E-1113)(1229B1848)	14.00	\$0.81	\$11.34
Parts	CS2000 Greasable Cam Bracket	6.00	\$9.53	\$57.18
Parts	E-2769SHD 4707 Brake Hardware Kit (SSKIT12HD)	4.00	\$13.66	\$54.64
Parts	AT-4707Q Q-Plus Lined Shoe Set W/Hardware Kit	2.00	\$70.68	\$141.36
Parts	373-0143 Wheel Seal (7097)	6.00	\$60.77	\$364.62
Parts	75W90 BULK 75W90 Bulk Synthetic Gear Oil	6.00	\$15.78	\$94.68
Parts	CS3066 Cam Seal 1.88" X 1.50" X .25" (02-304,29-1266)	12.00	\$2.16	\$25.92
Parts	19X1084 ASA Clevis Pin (ROCR801732)	6.00	\$5.78	\$34.68
Parts	0148760 5/16" x 1-1/4" Panhead Torx Bolt	2.00	\$1.50	\$3.00
Parts	CS3116 Cam Washer (29-1311,E-719)	9.00	\$1.65	\$14.85
Parts	CS3109 S- Cam Washer .060 (29-1307,R005800)	8.00	\$0.84	\$6.72
Parts	CS3102 Cam Washer 1.25"/1.88 0.060 (E-1113)(1229B1848)	20.00	\$0.81	\$16.20
Parts	13-3052Q 22MM Flange Metric Wheel Nut(E6000, WEP06000, 201.3014)	1.00	\$4.55	\$4.55



Invoice # 34185

Customer Name: 1472906 AB Ltd O/a Eagle Terrace Transport

Work Order # 18900

Parts	22946 1.188 Retainer Ring Ext	1.00	\$1.47	\$1.47
Parts	CS-3021 Camshaft Bushing Sintered Metal (02-204,E581,E807,28-1231	6.00	\$6.46	\$38.76
Parts	330-3009 Gasket, Hubcap (FS-34009-1)	6.00	\$2.98	\$17.88
			<b>Subtotal</b>	<b>\$3,974.02</b>

Item	Description	Quantity	Rate	Amount
<b>Complaint:</b> Corner brake lights out.				
Labor	Repaired wiring.	1.00	\$145.00	\$145.00
Parts	8126401BX Toggle Boot NO3 (82-2106)	2.00	\$7.24	\$14.48
			<b>Subtotal</b>	<b>\$159.48</b>

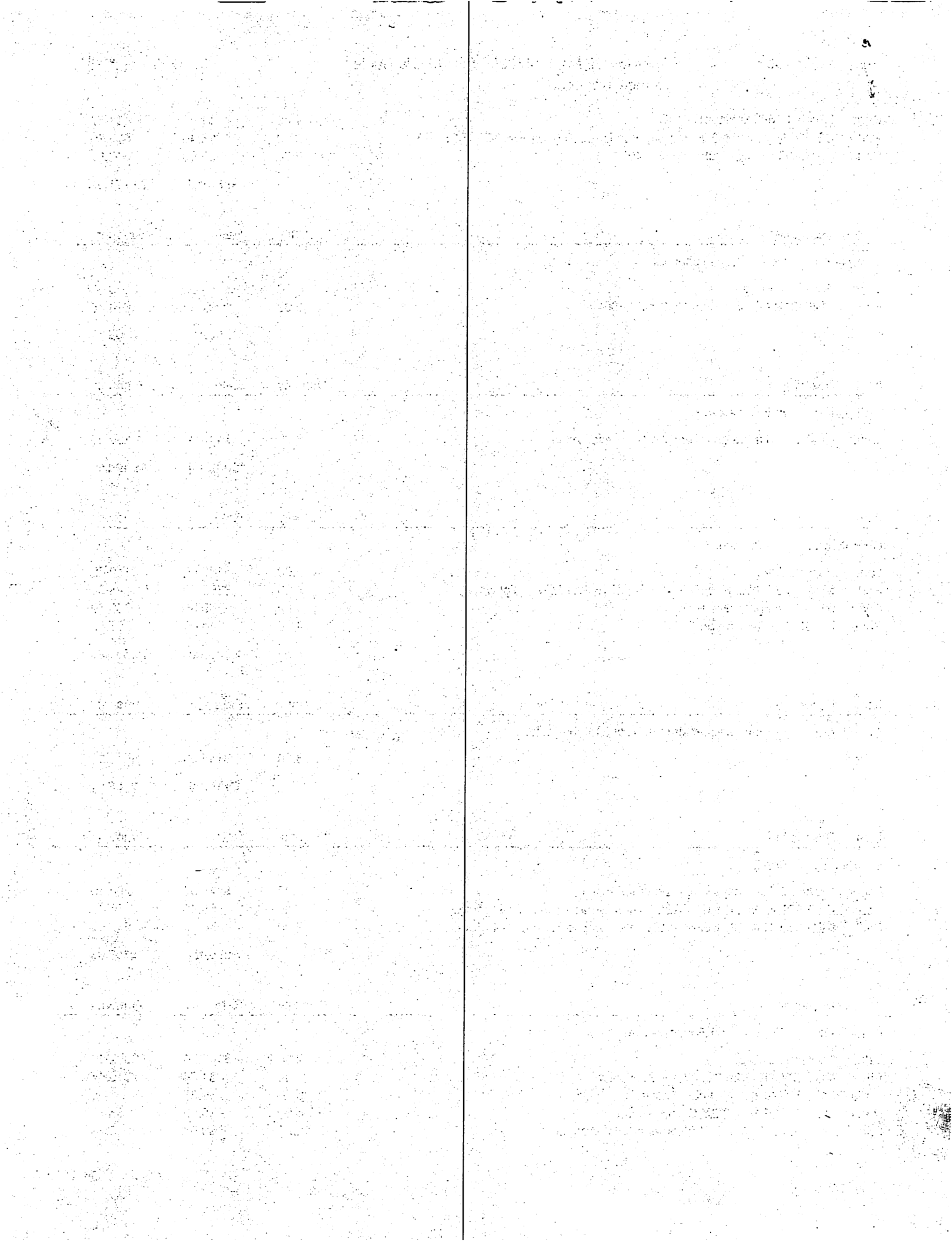
Item	Description	Quantity	Rate	Amount
<b>Complaint:</b> Rollers seized.				
Labor	Heated and freed up rollers. Added grease zerks.	8.00	\$145.00	\$1,160.00
			<b>Subtotal</b>	<b>\$1,160.00</b>

Item	Description	Quantity	Rate	Amount
<b>Complaint:</b> 4 tires worn.				
Labor	Replaced tires.	1.00	\$140.60	\$140.60
Parts	255/70-22.5-LM216 255/70R22.5-LM216 Trailer Tire Highway	4.00	\$362.00	\$1,448.00
Parts	RS572 Straight Valve Stem	4.00	\$9.95	\$39.80
Parts	Z0100 Tire Tax Charge	4.00	\$14.00	\$56.00
			<b>Subtotal</b>	<b>\$1,684.40</b>

Item	Description	Quantity	Rate	Amount
<b>Complaint:</b> Remove wheels for CVIP A at \$145 per axle.				
Labor		3.00	\$145.00	\$435.00
			<b>Subtotal</b>	<b>\$435.00</b>

Item	Description	Quantity	Rate	Amount
<b>Complaint:</b> Service.				
Labor	Greased. Set brakes. Adjusted tire pressure.	2.00	\$145.00	\$290.00
Parts	RED STICK NLGL 1-GREASE Winter Grease Tubes Ep#1, 400G	1.00	\$6.46	\$6.46
Parts	RED STICK NLGL 1-GREASE Winter Grease Tubes Ep#1, 400G	2.00	\$6.46	\$12.92
			<b>Subtotal</b>	<b>\$309.38</b>

Item	Description	Quantity	Rate	Amount
<b>Complaint:</b> RR, LR and RF slacks worn.				
Labor	Replaced slacks.	2.50	\$145.00	\$362.50
Parts	MSC-D39112 1/2-13 X 3 Gr.8 Capscrew	6.00	\$1.74	\$10.44
Parts	MSC-39729 1/2- ZY Lock Washer	6.00	\$0.33	\$1.98
Parts	MSC-39605 1/2-13-ZY Gr. 8 Hex Nut	6.00	\$0.63	\$3.78
Parts	MSC-39705 1/2 SAE ZY Hardened Flat Washer	12.00	\$0.54	\$6.48



Invoice # 34185

Customer Name: 1472906 AB Ltd O/a Eagle Terrace Transport

Work Order # 18900

Parts	PC1474S-6C 3/8" Brass DOT Tube Push - In X 3/8" Swivel Male NPT 45 Elbow	1.00	\$7.72	\$7.72
Parts	1492-8C Coupler Assembly 1/2 Hose X 3/8 Pipe	2.00	\$9.48	\$18.96
Parts	1492-6C Coupler Assembly 3/8 Hose X 3/8 Pipe	2.00	\$6.49	\$12.98
Parts	PC1469-8C Push Connect 1/2" DOT Tube 3/8" Male NPT 90	1.00	\$8.77	\$8.77
Parts	CS3302 Axle Lock Washer(06-230 , E2237 , R002237 )	1.00	\$3.25	\$3.25
Parts	1474-8C Elbow 45 Deg 1/2 Hose X 3/8 Male NPT	1.00	\$6.58	\$6.58
Parts	1469-6B Elbow 90 Deg 3/8 Hose X 1/4 Male NPT	1.00	\$4.30	\$4.30
Parts	1460-6 Sleeve 3/8	1.00	\$0.48	\$0.48
Parts	SYNFLEX-38 3/8 SYNFLEX Black	3.00	\$1.11	\$3.33
Parts	F400-D10212 Slack Adjuster ASA-5 1.5 - 28 - 6.0 ( K041877 , D0010212 )	2.00	\$121.51	\$243.02
Parts	F400-D10212 Slack Adjuster ASA-5 1.5 - 28 - 6.0 ( K041877 , D0010212 )	1.00	\$121.51	\$121.51
			<b>Subtotal</b>	<b>\$816.08</b>

Item	Description	Quantity	Rate	Amount
<b>Complaint:</b> LF shock loose.				
Labor	Tightened bolts.	0.25	\$145.00	\$36.25
			<b>Subtotal</b>	<b>\$36.25</b>

Item	Description	Quantity	Rate	Amount
<b>Complaint:</b> LF, RR airbags cords showing.				
Labor	Replaced airbags.	2.50	\$145.00	\$362.50
Parts	AS8744P Airbag	2.00	\$452.05	\$904.10
Parts	MSC-39618 Gr.8 Hex Nut 3/4" - 16 NF	2.00	\$0.03	\$0.06
Parts	PC1468-6B Straight To Push Connect	1.00	\$5.54	\$5.54
Parts	PC1471-6B 3/8" Brass Dot x 1/4" Male NPT	1.00	\$8.82	\$8.82
			<b>Subtotal</b>	<b>\$1,281.02</b>

Item	Description	Quantity	Rate	Amount
<b>Complaint:</b> Relay valve slow.				
Labor	Replaced valve.	1.50	\$145.00	\$217.50
Parts	4721950330X ABS MOD Valve Bayonet	1.00	\$302.68	\$302.68
			<b>Subtotal</b>	<b>\$520.18</b>

<b>Labor</b>	\$6,120.60
<b>Parts</b>	\$4,580.21
<b>Shop Supplies</b>	\$612.06
<b>Freight</b>	\$0.00
<b>Pre Tax Total</b>	\$11,312.87
<b>GST</b>	\$565.64
<b>Total</b>	<b>\$11,878.51</b>

