



532 W 20th Street  
Hialeah, FL 33010 US  
+17863775210  
sales@jjrebuilders.com  
www.jjrebuilders.com

Invoice 12366

DATE 06/13/2023 TERMS Due on receipt

DUE DATE 06/13/2023

SHIP DATE	SHIP VIA	TRACKING NO.	P.O. NUMBER	SALES REP
06/15/2023	YRC.COM	PRO # 674-899916-5	N/A	JPR

DATE	ACTIVITY	QTY	RATE	AMOUNT
06/13/2023	<b>Engine</b> (GOOD USED/ RUN TESTED/ FULLY INSPECTED) 2012 Cummins ISX15 Diesel Engine (7.6L) Engine Serial # 79594725 Engine Family # CCEXH0912XA Engine CPL 3719 Service Model Name: ISX15 CM2250 Engine Configuration: D103009BX03 (Stock# 005714)	1	18,000.00	18,000.00
06/13/2023	<b>Core Charge</b> Core Charge (REFUNDABLE UPON RETURN OF CORE, MUST BE BUILT OUT, NO HOLE IN THE BLOCK, MUST TURN 360, MUST BE THE SAME MODEL ENGINE TO RECEIVE CORE CREDIT)	1	2,000.00	2,000.00
06/13/2023	<b>Freight</b> GROUND SHIPPING (F.O.B ORIGIN) ( YRC FREIGHT )	1	1,372.85	1,372.85
06/13/2023	<b>Engine Crate</b> Diesel Engine Crate	1	175.00	175.00

The engine comes with a 30 day block and crank exchange warranty from the day the engine is delivered to the customer or the certified mechanics shop doing the installation. See attached terms and conditions of sale for more information. Payment and acceptance of goods constitute acceptance of these terms.

SUBTOTAL	21,547.85
TAX	0.00
TOTAL	21,547.85
PAYMENT	21,547.85

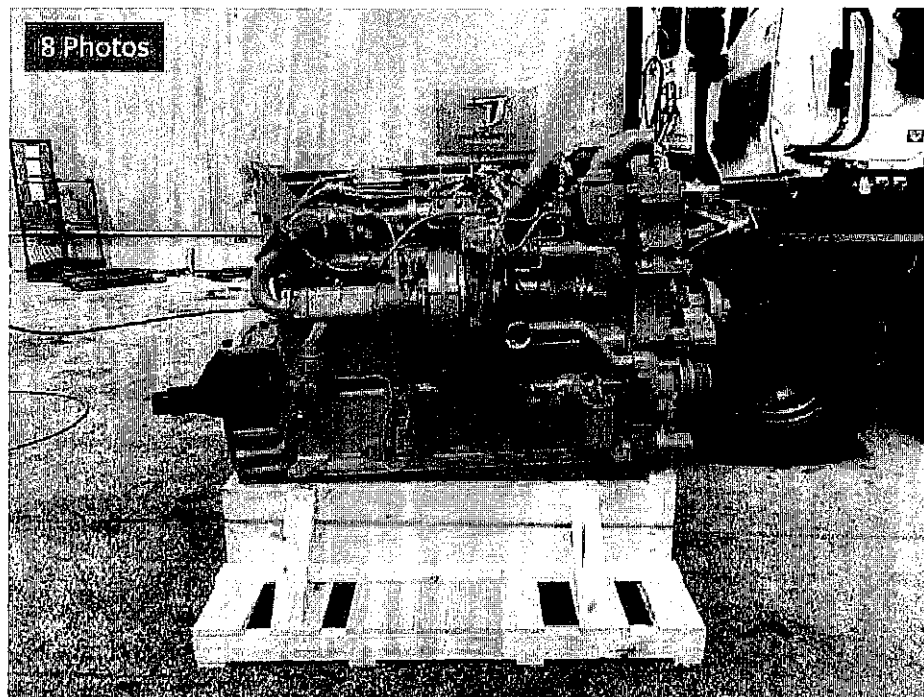
TOTAL DUE	\$0.00
-----------	--------

"AS IS" and "WHERE IS" with or without any and all faults. "NO WARRANTIES" or "GUARANTEES MADE". Balance must be paid within 48 hours from the time of invoice. All Parts must be paid in full prior to delivery date. No removals until paid in full. All purchases become complete responsibility of customer. All Sales Are Final.

JJ REBUILDERS  
HIALEAH, FL 33010  
(800) 971-3019  
www.jjrebuilders.com



STOCK #005714  
2012 CUMMINS ISX15 TRUCK ENGINE



#### ADDITIONAL INFORMATION

(GOOD USED/ RUN TESTED/ FULLY INSPECTED) 2012 Cummins ISX15 Diesel Engine (EPA10), Engine Serial # 79592425, Engine Family # CCEXH0912XAP, Engine CPL 3719, Service Model Name: ISX15 CM2250, Engine Configuration: D103009BX03, 400HP @ 1800RPM, 1750LBS @ 1100RPM, Fully Inspected!!! LOW MILES!!! RUNS GREAT!!!! visit JJREBUILDERS for more information on this motor or any other diesel engine. Call for more information. REF INV # 005714

25529 COW  
for Surrey

#### SPECIFICATIONS

Price	Price not Provided	Fuel	Diesel
Stock #	005714	Brake Type	Air
VIN	79594725	Pulled From	2013 Volvo VNL
Engine	Cummins ISX15 400HP 6 Cyl	Fits	2013 Volvo VNL
Engine Serial	79594725	Part Number	Cummins ISX15 EPA 10
Engine Size	15.0L	Color	Cummins Red
Engine Family	CCEXH0912XAP		
Engine CPL/AR	3719		