

## Performance-Based Standards (PBS) Vehicle Approval

Heavy Vehicle National Law Section 23

Heavy Vehicle (General) National Regulation Section 17

This is not an authorisation to access the road network.  
You must comply with the relevant Notice or if required, obtain an access permit.

29 May 2021

This PBS Vehicle Approval modifies any previously issued approval for the vehicle(s) listed herein operating under Application Number V090705.

Applicant details		Operator	
-------------------	--	----------	--

Application Number	V090705	Vehicle	3-axle truck 4-axle dog
Load	Quarry and Bulk	Length (mm)	≤ 19750
Assessor	Hans Prem	Height (mm)	≤ 4300

### Combination matrix

For each truck and trailer, the corresponding drawing and dimension set number is listed. The dimension set number (e.g. Sheet 1) indicates the maximum allowable payload heights and/or allowable tyre options for the specific combination (refer to payload height operating conditions and approved tyre options). Additional vehicle units are listed in bold.

	Trailer 1	Trailer 2	Trailer 3	Trailer 4
Truck 1	GP0152 Sheet 1 Table 1	GP0152 Sheet 1 Table 1	GP0152 Sheet 1 Table 1	GP0152 Sheet 1 Table 1
Truck 2	GP0152 Sheet 1 Table 1	GP0152 Sheet 1 Table 1	GP0152 Sheet 1 Table 1	GP0152 Sheet 1 Table 1
Truck 3	GP0152 Sheet 1 Table 1	GP0152 Sheet 1 Table 1	GP0152 Sheet 1 Table 1	GP0152 Sheet 1 Table 1
Truck 4	GP0152 Sheet 1 Table 1	GP0152 Sheet 1 Table 1	GP0152 Sheet 1 Table 1	GP0152 Sheet 1 Table 1

**Table 1**  
**Truck 1, 2, 3, 4 and Trailer 1, 2, 3**

Mass Limits	Level 1	Level 2	Axle Group Masses	Level 1	Level 2	
				GML	GML	CML HML
GML (t)	50.5	56.0	Steer (t)	6.5	6.5	6.5
CML (t)	NA	57.5	Drive (t)	16.5	16.5	17.0
HML (t)	NA	57.5	Trailer Front (t)	15.0*	16.5	17.0
Bridge Assessment	Tier 1		Trailer Rear (t)	15.0*	16.5	17.0
* The trailer mass is limited to - - 27.5t at Level 1 GML						

Truck 1	Truck 2		
6FMM12H02CD803620	6FMM12H56DD805002	6FMM12H56HD808321	6FMM12H56JD809217
6FMM12H02CD803616	6FMM12H56DD805004	6FMM12H56HD808324	6FMM12H56JD809286
6FMM12H56DD804256	6FMM12H56DD805016	6FMM12H56HD808329	6FMM12H56HD808210
6FMM12H56DD804262	6FMM12H56ED805301	6FMM12H56HD808392	6FMM12H56HD808301
6FMM12H56DD804269	6FMM12H56ED805320	6FMM12H56HD808345	6FMM12H56JD809166
6FMM12H56DD804345	6FMM12H56ED805362	6FMM12H56HD808395	6FMM12H56JD809213
6FMM12H56DD804327	6FMM12H56GD807707	6FMM12H56HD808432	6FMM12H56JD809284
6FMM12H56DD804361	6FMM12H56GD807669	6FMM12H56HD808500	6FMM12H56JD809290
6FMM12H56DD804166	6FMM12H56GD807813	6FMM12H56HD808563	6FMM12H56JD809360
6FMM12H56DD804476	6FMM12H56GD807788	6FMM12H56HD808504	6FMM12H56JD809363
6FMM12H56DD804358	6FMM12H56GD807789	6FMM12H56HD808552	6FMM12H56JD809386
6FMM12H56DD804488	6FMM12H56GD807839	6FMM12H56HD808716	6FMM12H56JD809408
6FMM12H56DD804878	6FMM12H56ED805366	6FMM12H56HD808718	6FMM12H56JD809416
6FMM12H56DD804884	6FMM12H56GD807455	6FMM12H56HD808781	6FMM12H56JD809423
6FMM12H56DD804885	6FMM12H56GD807443	6FMM12H56HD808788	6FMM12H56JD809485
6FMM12H56DD804160	6FMM12H56GD807433	6FMM12H56HD808798	6FMM12H56JD809492
6FMM12H56DD804478	6FMM12H56GD807454	6FMM12H56HD808865	6FMM12H56JD809622
6FMM12H56DD804044	6FMM12H56GD807500	6FMM12H56HD808795	6FMM12H56JD809626
6FMM12H56DD804054	6FMM12H56GD807538	6FMM12H56HD808867	6FMM12H56JD809731
6FMM12H56DD804154	6FMM12H56GD807544	6FMM12H56HD808896	6FMM12H56JD809746
6FMM12H02CD803701	6FMM12H56GD807549	6FMM12H56HD808885	6FMM12H56JD809866
6FMM12H02CD803608	6FMM12H56GD807794	6FMM12H56HD808972	6FMM12H56JD809872
	6FMM12H56GD807945	6FMM12H56HD808974	6FMM12H56JD809899
	6FMM12H56GD807949	6FMM12H56HD809017	6FMM12H56JD809924
	6FMM12H56HD808060	6FMM12H56HD809022	6FMM12H56JD809928
	6FMM12H56HD808078	6FMM12H56HD809027	6FMM12H56JD809885
	6FMM12H56HD808130	6FMM12H56HD809028	6FMM12H56JD809940
	6FMM12H56HD808118	6FMM12H56JD809154	6FMM12H56JD810368
	6FMM12H56HD808206	6FMM12H56JD809207	6FMM12H56JD810395
	6FMM12H56HD808304		

Truck 3	Truck 4
6FMM12H56JD810400	6FMM12H69KD810987
6FMM12H56KD810545	6FMM12H69KD811006
6FMM12H56KD810669	6FMM12H69KD811114
6FMM12H56KD810692	6FMM12H69KD811396
6FMM12H56KD810727	6FMM12H69KD811132
6FMM12H56KD810759	<b>6FMM12H69KD810938</b>
6FMM12H56KD810775	<b>6FMM12H69KD811062</b>
6FMM12H56KD810873	<b>6FMM12H69KD811211</b>
6FMM12H56KD810596	<b>6FMM12H69KD811241</b>
6FMM12H69KD811015	
6FMM12H56KD810582	

Trailer 1	Trailer 2		
6T9T24V97D0AFH008	6T9T24V97E0AFH057	6T9T24V86H0AFH094	6T9T24V86J0AFH060
6T9T24V97D0AFH009	6T9T24V97E0AFH058	6T9T24V86H0AFH101	6T9T24V86J0AFH077
6T9T24V97D0AFH133	6T9T24V97E0AFH087	6T9T24V86H0AFH126	6T9T24V86H0AFH061
6T9T24V97D0AFH134	6T9T24V97E0AFH089	6T9T24V86H0AFH127	6T9T24V86H0AFH073
6T9T24V97E0AFH002	6T9T24V86G0AFH121	6T9T24V86H0AFH128	6T9T24V86H0AFH074
6T9T24V97E0AFH003	6T9T24V86G0AFH122	6T9T24V86H0AFH133	6T9T24V86J0AFH057
6T9T24V97E0AFH004	6T9T24V86G0AFH123	6T9T24V86H0AFH144	6T9T24V86J0AFH058
6T9T24V97D0AFH132	6T9T24V86G0AFH124	6T9T24V86H0AFH145	6T9T24V86J0AFH078
6T9T24V97D0AFH062	6T9T24V86G0AFH125	6T9T24V86H0AFH146	6T9T24V86J0AFH079
6T9T24V97D0AFH025	6T9T24V86G0AFH156	6T9T24V86H0AFH159	6T9T24V86J0AFH105
6T9T24V97D0AFH034	6T9T24V86G0AFH155	6T9T24V86H0AFH160	6T9T24V86J0AFH106
6T9T24V97D0AFH070	6T9T24V86G0AFH160	6T9T24V86H0AFH147	6T9T24V86J0AFH107
6T9T24V97D0AFH071	6T9T24V86G0AFH161	6T9T24V86H0AFH161	6T9T24V86J0AFH108
6T9T24V97D0AFH086	6T9T24V86F0AFH007	6T9T24V86H0AFH162	6T9T24V86J0AFH119
6T9T24V97D0AFH093	6T9T24V86G0AFH055	6T9T24V86H0AFH179	6T9T24V86J0AFH120
6T9T24V97D0AFH085	6T9T24V86G0AFH056	6T9T24V86H0AFH180	6T9T24V86J0AFH121
6T9T24V97D0AFH094	6T9T24V86G0AFH067	6T9T24V86H0AFH188	6T9T24V86J0AFH123
6T9T24V97D0AFH135	6T9T24V86G0AFH068	6T9T24V86H0AFH189	6T9T24V86J0AFH124
6T9T24V97D0AFH024	6T9T24V86G0AFH081	6T9T24V86H0AFH190	6T9T24V86J0AFH125
6T9T24V97D0AFH112	6T9T24V86G0AFH126	6T9T24V86H0AFH193	6T9T24V86J0AFH126
	6T9T24V86G0AFH130	6T9T24V86H0AFH194	6T9T24V86J0AFH127
	6T9T24V86H0AFH003	6T9T24V86H0AFH195	6T9T24V86J0AFH167
	6T9T24V86H0AFH009	6T9T24V86H0AFH196	6T9T24V86J0AFH181
	6T9T24V86H0AFH018	6T9T24V86J0AFH005	6T9T24V86J0AFH182
	6T9T24V86H0AFH019	6T9T24V86J0AFH006	6T9T24V86J0AFH183
	6T9T24V86H0AFH033	6T9T24V86J0AFH011	6T9T24V86J0AFH184
	6T9T24V86H0AFH060	6T9T24V86J0AFH012	6T9T24V86J0AFH196
	6T9T24V86H0AFH075	6T9T24V86J0AFH035	6T9T24V86J0AFH203
	6T9T24V86H0AFH093	6T9T24V86J0AFH036	6T9T24V86KAAFH002
	6T9T24V86H0AFH089	6T9T24V86J0AFH056	6T9T24V86KAAFH026
	6T9T24V86H0AFH090	6T9T24V86J0AFH059	6T9T24V86L0AFH081

## Trailer 3

6T9T24V86KAAFH120  
6T9T24V86LAAFH020  
6T9T24V86LAAFH005  
6T9T24V86LAAFH024  
6T9T24V86LAAFH042  
6T9T24V86LAAFH029  
6T9T24V86LAAFH041  
6T9T24V86LAAFH033  
6T9T24V86LAAFH023  
6T9T24V86LAAFH053  
6T9T24V86LAAFH052  
6T9T24V86LAAFH069  
6T9T24V86LAAFH021  
6T9T24V86LAAFH070  
6T9T24V86LAAFH082  
**6T9T24V86LAAFH083**  
**6T9T24V86LAAFH090**  
**6T9T24V86LAAFH102**  
**6T9T24V86LAAFH104**

## Operating conditions

The NHVR approves the vehicles listed herein for the level(s) shown in the “Mass Limits” table with the following operating conditions:

1. The total combination mass must not exceed the limits in the “Mass Limits” table.
2. The axle group masses must not exceed the limits in the “Axle Group Masses” table.
3. If the “Mass Limits” table specifies Tier 2 or Tier 3, a bridge assessment is required.
4. Maximum bin heights measured from the ground must not exceed: (m)

	Truck	Trailer
1	2.730	2.710
2	2.850	2.810
3	2.865	2.820
4	2.865	NA

5. Maximum payload heights measured from the ground must not exceed: (m)

	Truck	Trailer
Sheet 1	2.900	2.860

6. 6.5 tonne complying steer axle requirements:
  - an engine that complies with the engine emission standards of Australian Design Rule (ADR) 80/01 (Euro 4) or a later version of ADR 80; and
  - a front underrun protection device (FUPD) that complies with UN ECE Regulation 93 or ADR 84; and
  - a cabin that complies with UN ECE Regulation 29.
7. Concessional Mass Limits (CML) requirements:
  - a National Heavy Vehicle Accreditation Scheme (NHVAS) – Mass Management Accreditation must be in force for all motor vehicles listed on this vehicle approval.
8. Higher Mass Limits (HML) requirements:
  - for tandem axles groups, road friendly suspensions.
9. When the trailer mass exceeds the truck mass, at least 16t on the drive axle group is required. This clause does not apply for an unladen vehicle.

## Exemptions

*Heavy Vehicle National Law Section 24*

*Heavy Vehicle (General) National Regulation Section 28*

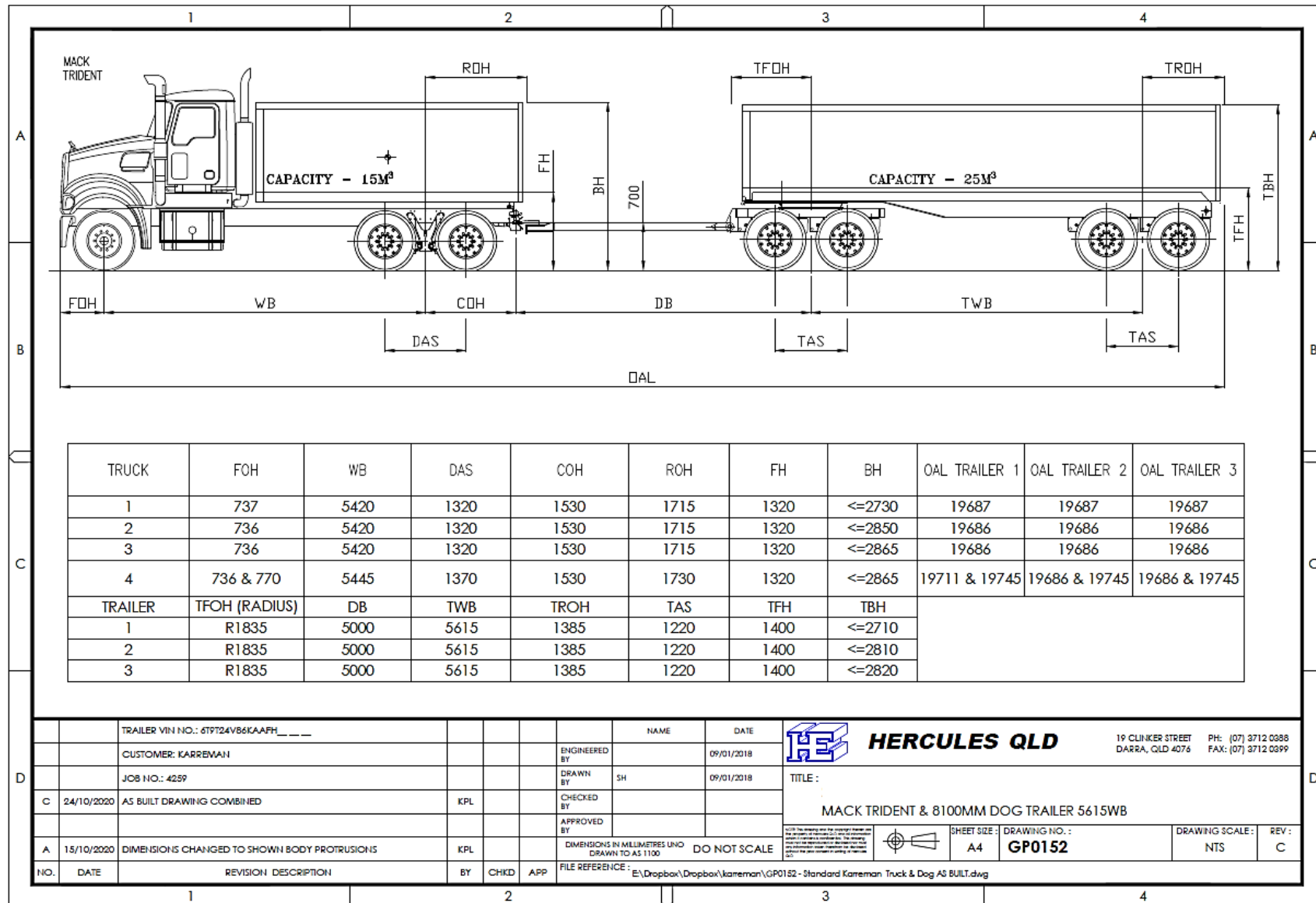
The following table lists exemptions from prescribed vehicle standards that have been granted for the vehicle(s) in this vehicle approval.

Exemptions	
ADR	NA
HV(MDL)NR	Schedule 6, Section 3 (Length – General)
HV(VS)NR	NA

ADR                                      Australian Design Rules

HV(MDL)NR                              *Heavy Vehicle (Mass, Dimension and Loading) National Regulation*

HV(VS)NR                                      *Heavy Vehicle (Vehicle Standards) National Regulation*



## Details of truck(s) or prime mover(s) – Truck 1

Make	MACK	
Model	Trident CT 6x4	
VIN(s)	6FMM12H02CD803620 6FMM12H02CD803616 6FMM12H56DD804256 6FMM12H56DD804262 6FMM12H56DD804269 6FMM12H56DD804345 6FMM12H56DD804327 6FMM12H56DD804361 6FMM12H56DD804166 6FMM12H56DD804476 6FMM12H56DD804358	6FMM12H56DD804488 6FMM12H56DD804878 6FMM12H56DD804884 6FMM12H56DD804885 6FMM12H56DD804160 6FMM12H56DD804478 6FMM12H56DD804044 6FMM12H56DD804054 6FMM12H56DD804154 6FMM12H02CD803701 6FMM12H02CD803608
Engine make/ model/ rating	MACK MP8 500HP/2400NM	
Transmission make/ model	MACK AT2612D	
Differential make/ model/ FD ratio	Meritor RT46 FDR 3.42:1	
Suspension make/ model (Steer)	MACK (AUS) LEAF 6600kg	
Suspension make/ model (Drive)	MACK AL460 RAL21 20000 RFS2061	
Tyres make/ size/ model (Steer)	295/80R22.5 Michelin	
Tyres make/ size/ model (Drive)	11R22.5 Michelin	
Brakes (Load Proportioning, ABS, ECB, etc.)	ABS	
Tow coupling make/ D rating	Ringfeder AS202 D=285KN	
Wheelbase (mm)	5420	
Vehicle height (Measured from the ground) (mm)	2730	
Number of axles	3	
ADR category	NC	
GVM (kg)	24,500 / 26,000	

GCM (kg)	70,000
Comments/ notes: Truck 1 and Truck 2 have the same dimensions except for their respective bin heights and are interchangeable.	

## Details of truck(s) or prime mover(s) – Truck 2

Make	MACK	
Model	Trident CT 6x4	
VIN(s)	6FMM12H56DD805002	6FMM12H56HD808716
	6FMM12H56DD805004	6FMM12H56HD808718
	6FMM12H56DD805016	6FMM12H56HD808781
	6FMM12H56ED805301	6FMM12H56HD808788
	6FMM12H56ED805320	6FMM12H56HD808798
	6FMM12H56ED805362	6FMM12H56HD808865
	6FMM12H56GD807707	6FMM12H56HD808795
	6FMM12H56GD807669	6FMM12H56HD808867
	6FMM12H56GD807813	6FMM12H56HD808896
	6FMM12H56GD807788	6FMM12H56HD808885
	6FMM12H56GD807789	6FMM12H56HD808972
	6FMM12H56GD807839	6FMM12H56HD808974
	6FMM12H56ED805366	6FMM12H56HD809017
	6FMM12H56GD807455	6FMM12H56HD809022
	6FMM12H56GD807443	6FMM12H56HD809027
	6FMM12H56GD807433	6FMM12H56HD809028
	6FMM12H56GD807454	6FMM12H56JD809154
	6FMM12H56GD807500	6FMM12H56JD809207
	6FMM12H56GD807538	6FMM12H56JD809217
	6FMM12H56GD807544	6FMM12H56JD809286
	6FMM12H56GD807549	6FMM12H56HD808210
	6FMM12H56GD807794	6FMM12H56HD808301
	6FMM12H56GD807945	6FMM12H56JD809166
	6FMM12H56GD807949	6FMM12H56JD809213
	6FMM12H56HD808060	6FMM12H56JD809284
	6FMM12H56HD808078	6FMM12H56JD809290
	6FMM12H56HD808130	6FMM12H56JD809360
	6FMM12H56HD808118	6FMM12H56JD809363
	6FMM12H56HD808206	6FMM12H56JD809386
	6FMM12H56HD808304	6FMM12H56JD809408
	6FMM12H56HD808321	6FMM12H56JD809416
	6FMM12H56HD808324	6FMM12H56JD809423
6FMM12H56HD808329	6FMM12H56JD809485	
6FMM12H56HD808392	6FMM12H56JD809492	
6FMM12H56HD808345	6FMM12H56JD809622	
6FMM12H56HD808395	6FMM12H56JD809626	
6FMM12H56HD808432	6FMM12H56JD809731	

	6FMM12H56HD808500 6FMM12H56HD808563 6FMM12H56HD808504 6FMM12H56HD808552 6FMM12H56HD808587 6FMM12H56HD808605 6FMM12H56HD808627 6FMM12H56HD808631 6FMM12H56HD808607 6FMM12H56HD808678	6FMM12H56JD809746 6FMM12H56JD809866 6FMM12H56JD809872 6FMM12H56JD809899 6FMM12H56JD809924 6FMM12H56JD809928 6FMM12H56JD809885 6FMM12H56JD809940 6FMM12H56JD810368 6FMM12H56JD810395
Engine make/ model/ rating	MACK MP8 500HP/2400NM Retuned to 535HP	
Transmission make/ model	MACK AT2612D	
Differential make/ model/ FD ratio	Meritor RT46 FDR 3.42:1	
Suspension make/ model (Steer)	MACK (AUS) LEAF 6600KG	
Suspension make/ model (Drive)	MACK AL460 RAL21 20000 RFS2061 and RF2067	
Tyres make/ size/ model (Steer)	295/80R22.5 Michelin, Bridgestone R150	
Tyres make/ size/ model (Drive)	11R22.5 Michelin, Bridgestone M766	
Brakes (Load Proportioning, ABS, ECB, etc.)	ABS	
Tow coupling make/ D rating	Ringfeder AS202 D=285kN, AS 303 D=320kN	
Wheelbase (mm)	5420	
Vehicle height (Measured from the ground) (mm)	2850	
Number of axles	3	
ADR category	NC	
GVM (kg)	24,500 / 26,000 / 27,600	
GCM (kg)	70,000	
Comments/ notes: Truck 1 and Truck 2 have the same dimensions except for their respective bin heights and are interchangeable.		

## Details of truck(s) or prime mover(s) – Truck 3

Make	MACK	
Model	Trident 6x4	
VIN(s)	6FMM12H56JD810400 6FMM12H56KD810545 6FMM12H56KD810669 6FMM12H56KD810692 6FMM12H56KD810727 6FMM12H56KD810759	6FMM12H56KD810775 6FMM12H56KD810873 6FMM12H56KD810596 6FMM12H69KD811015 6FMM12H56KD810582
Engine make/ model/ rating	MACK MP8 (399kW/535hp)	
Transmission make/ model	MACK AT2612D	
Differential make/ model/ FD ratio	Meritor RT46-160GP FDR 3.42:1	
Suspension make/ model (Steer)	MACK 6.6t Parabolic leaf spring	
Suspension make/ model (Drive)	MACK AL460 RF2061	
Tyres make/ size/ model (Steer)	295/80R22.5 Michelin X-Multi Z	
Tyres make/ size/ model (Drive)	11R22.5 Michelin X-Multi D	
Brakes (Load Proportioning, ABS, ECB, etc.)	ABS	
Tow coupling make/ D rating	Automatic Pin Coupling D-rating = 320 kN	
Wheelbase (mm)	5420	
Vehicle height (Measured from the ground) (mm)	2865	
Number of axles	3	
ADR category	NC	
GVM (kg)	27,600	
GCM (kg)	70,000	
Comments/ notes:		

## Details of truck(s) or prime mover(s) – Truck 4

Make	MACK
Model	Trident 6x4
VIN(s)	6FMM12H69KD810987 6FMM12H69KD811006 6FMM12H69KD811114 6FMM12H69KD811396 6FMM12H69KD811132 <b>6FMM12H69KD810938</b> <b>6FMM12H69KD811062</b> <b>6FMM12H69KD811211</b> <b>6FMM12H69KD811241</b>
Engine make/ model/ rating	MACK MP8 (399kW/535hp)
Transmission make/ model	MACK AT2612D
Differential make/ model/ FD ratio	Meritor RT46-160GP FDR 3.42:1
Suspension make/ model (Steer)	MACK 6.6t Parabolic leaf spring
Suspension make/ model (Drive)	Mack AP460 (RADD-A4P)
Tyres make/ size/ model (Steer)	295/80R22.5 Michelin X-Multi Z
Tyres make/ size/ model (Drive)	11R22.5 Michelin X-Multi D
Brakes (Load Proportioning, ABS, ECB, etc.)	ABS
Tow coupling make/ D rating	Automatic Pin Coupling D-rating = 320 kN
Wheelbase (mm)	5445
Vehicle height (Measured from the ground) (mm)	2865
Number of axles	3
ADR category	NC
GVM (kg)	27,600
GCM (kg)	70,000
Comments/ notes:	

Details of trailer(s) or dolly(s) – Trailer 1

Type	4 AXLE DOG TRAILER WITH TIPPING BODY	
Make	Hercules	
Model	HEDT-4	
VIN(s)	6T9T24V97D0AFH008 6T9T24V97D0AFH009 6T9T24V97D0AFH133 6T9T24V97D0AFH134 6T9T24V97E0AFH002 6T9T24V97E0AFH003 6T9T24V97E0AFH004 6T9T24V97D0AFH132 6T9T24V97D0AFH062 6T9T24V97D0AFH025	6T9T24V97D0AFH034 6T9T24V97D0AFH070 6T9T24V97D0AFH071 6T9T24V97D0AFH086 6T9T24V97D0AFH093 6T9T24V97D0AFH085 6T9T24V97D0AFH094 6T9T24V97D0AFH135 6T9T24V97D0AFH024 6T9T24V97D0AFH112
Suspension make/ model	TMCV VERTICAL SHOCKER 653380 RFS 2035	
Tyres make/ size/ model	11R22.5 Michelin	
Drawbar length (mm)	5000	
Coupling make/ D rating	Ringfeder 50 weld on eye D260kN	
Brakes (Load Proportioning, ABS, ECB, etc.)	ABC 22B ABS	
Wheelbase (mm)	5615	
Vehicle height (Measured from the ground) (mm)	2710	
Number of axles	4	
ADR category	TD	
ATM (kg)	35,000	
Comments/ notes: Trailer 1 and Trailer 2 have the same dimensions except for their respective bin heights and are interchangeable.		

## Details of trailer(s) or dolly(s) – Trailer 2

Type	4 AXLE DOG TRAILER WITH TIPPING BODY	
Make	Hercules	
Model	HEDT-4	
VIN(s)	6T9T24V97E0AFH057 6T9T24V97E0AFH058 6T9T24V97E0AFH087 6T9T24V97E0AFH089 6T9T24V86G0AFH121 6T9T24V86G0AFH122 6T9T24V86G0AFH123 6T9T24V86G0AFH124 6T9T24V86G0AFH125 6T9T24V86G0AFH156 6T9T24V86G0AFH155 6T9T24V86G0AFH160 6T9T24V86G0AFH161 6T9T24V86F0AFH007 6T9T24V86G0AFH055 6T9T24V86G0AFH056 6T9T24V86G0AFH067 6T9T24V86G0AFH068 6T9T24V86G0AFH081 6T9T24V86G0AFH126 6T9T24V86G0AFH130 6T9T24V86H0AFH003 6T9T24V86H0AFH009 6T9T24V86H0AFH018 6T9T24V86H0AFH019 6T9T24V86H0AFH033 6T9T24V86H0AFH060 6T9T24V86H0AFH075 6T9T24V86H0AFH093 6T9T24V86H0AFH089 6T9T24V86H0AFH090 6T9T24V86H0AFH094 6T9T24V86H0AFH101 6T9T24V86H0AFH126	6T9T24V86H0AFH180 6T9T24V86H0AFH188 6T9T24V86H0AFH189 6T9T24V86H0AFH190 6T9T24V86H0AFH193 6T9T24V86H0AFH194 6T9T24V86H0AFH195 6T9T24V86H0AFH196 6T9T24V86J0AFH005 6T9T24V86J0AFH006 6T9T24V86J0AFH011 6T9T24V86J0AFH012 6T9T24V86J0AFH035 6T9T24V86J0AFH036 6T9T24V86J0AFH056 6T9T24V86J0AFH059 6T9T24V86J0AFH060 6T9T24V86J0AFH077 6T9T24V86H0AFH061 6T9T24V86H0AFH073 6T9T24V86H0AFH074 6T9T24V86J0AFH057 6T9T24V86J0AFH058 6T9T24V86J0AFH078 6T9T24V86J0AFH079 6T9T24V86J0AFH105 6T9T24V86J0AFH106 6T9T24V86J0AFH107 6T9T24V86J0AFH108 6T9T24V86J0AFH119 6T9T24V86J0AFH120 6T9T24V86J0AFH121 6T9T24V86J0AFH123 6T9T24V86J0AFH124

	6T9T24V86H0AFH127 6T9T24V86H0AFH128 6T9T24V86H0AFH133 6T9T24V86H0AFH144 6T9T24V86H0AFH145 6T9T24V86H0AFH146 6T9T24V86H0AFH159 6T9T24V86H0AFH160 6T9T24V86H0AFH147 6T9T24V86H0AFH161 6T9T24V86H0AFH162 6T9T24V86H0AFH179	6T9T24V86J0AFH125 6T9T24V86J0AFH126 6T9T24V86J0AFH127 6T9T24V86J0AFH167 6T9T24V86J0AFH181 6T9T24V86J0AFH182 6T9T24V86J0AFH183 6T9T24V86J0AFH184 6T9T24V86J0AFH196 6T9T24V86J0AFH203 6T9T24V86KAAFH002 6T9T24V86KAAFH026 6T9T24V86L0AFH081
Suspension make/ model	TMCV VERTICAL SHOCKER 653380 RFS 2035	
Tyres make/ size/ model	11R22.5 Michelin	
Drawbar length (mm)	5000	
Coupling make/ D rating	Ringfeder 50 weld on eye D260kN	
Brakes (Load Proportioning, ABS, ECB, etc.)	ABC 22B ABS	
Wheelbase (mm)	5615	
Vehicle height (Measured from the ground) (mm)	2810	
Number of axles	4	
ADR category	TD	
ATM (kg)	35,000	
Comments/ notes: Trailer 1 and Trailer 2 have the same dimensions except for their respective bin heights and are interchangeable.		

## Details of trailer(s) or dolly(s) – Trailer 3

Type	4 AXLE DOG TRAILER WITH TIPPING BODY	
Make	Hercules	
Model	HEDT-4	
VIN(s)	6T9T24V86KAAFH120 6T9T24V86LAAAFH020 6T9T24V86LAAAFH005 6T9T24V86LAAAFH024 6T9T24V86LAAAFH042 6T9T24V86LAAAFH029 6T9T24V86LAAAFH041 6T9T24V86LAAAFH033 6T9T24V86LAAAFH023 6T9T24V86LAAAFH053	6T9T24V86LAAAFH052 6T9T24V86LAAAFH069 6T9T24V86LAAAFH021 6T9T24V86LAAAFH070 6T9T24V86LAAAFH082 <b>6T9T24V86LAAAFH083</b> <b>6T9T24V86LAAAFH090</b> <b>6T9T24V86LAAAFH102</b> <b>6T9T24V86LAAAFH104</b>
Suspension make/ model	TMCV VERTICAL SHOCKER 653380 RFS 2035	
Tyres make/ size/ model	11R22.5 Michelin X-Multi T 11R22.5 Michelin X-Multi T with Michelin XZY3 Retread	
Drawbar length (mm)	5000	
Coupling make/ D rating	Ball Race Conventional Towing Eye D-Rating = 260 kN	
Brakes (Load Proportioning, ABS, ECB, etc.)	EBS	
Wheelbase (mm)	5615	
Vehicle height (Measured from the ground) (mm)	2820	
Number of axles	4	
ADR category	TD	
ATM (kg)	35,000	
Comments/ notes:		

## Approved tyre options

### Steer –

- **11R22.5, 295/80R22.5** Michelin, Bridgestone, Firestone, Goodyear, Dunlop, Continental, Ohtsu/ Falken/ Sumitomo, Kumho, Hankook, Chao Yang, Goodride, Toyo, Semperit, Windpower, Windforce, Aeolus, Haulmax, Yokohama, Boto

### Drive –

- **11R22.5, 295/80R22.5** Michelin XZA 2+, X Multi D, XDE 2+, XDE M/S, XDY3, Bridgestone M711, M722, M733, M766, M726, M729, M749, M822, M840, Continental HDR2+, HD Hybrid, HS Hybrid, Goodyear G367 (G667), Dunlop SP430, SP431, Firestone FD663, Kumho KMD01, Hankook DH05, DH16, DL10, AH22, AH33, AH22+, AM06, Z35A, Goodride MD738, CM333, CB972, Aeolus ADC53, HN08, HN06, HN266, Boto BT168, Haulmax ATT307, ATT101, ATT202, Remington R628, Triangle TR688

Or

- **11R22.5** Michelin XZY3, XZY3 (*Retread*)

### Trailer –

- **11R22.5, 295/80R22.5** Michelin XZA 2+, XTE 2, X Multi T, X Multi Z, Bridgestone R187, R295, R109, R168, Continental HTR, HT3, HS Hybrid, Firestone T559, Dunlop SP430, Goodyear LHT, LHT II, Hankook TH22, TH06Z, AH33, AH22, AH22+, AM06, Goodride CR926D, CR960A, Ohtsu/ Falken R1200, Triangle TRS01, TR666, Chao Yang CR976A, Kumho KRT03, Toyo M122, Remington R628, Boto BT168, Windpower WGB21, Aeolus HN08, HN06, HN266, Haulmax ATT101, ATT202

Or

- **11R22.5** Michelin XZY3, XZY3 (*Retread*)

Retread tyres are permitted, provided they are certified by the manufacturer that its performance is equivalent to a new tyre.

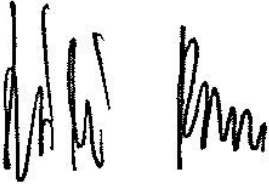
Tyre load ratings must be appropriate for the axle mass.

Tyres listed herein are specific for PBS application number V090705.

A different list of tyres will apply for other combination types and different PBS application numbers.

## Declaration

I, Laszlo Bruzsa Chief Engineer, delegate of the National Heavy Vehicle Regulator approves this PBS Vehicle Approval PBS–V090705 –VA8335.



Laszlo (Les) Bruzsa  
 Chief Engineer  
 National Heavy Vehicle Regulator  
 Dated: 29/05/21

## Revision table

N	VA	Vers	Brief description	Date
1	5774	1	First issue. Adding 4x trucks, 4x trailers to VA5551 (additional VINs listed in bold).	28/11/18
2	6102	1	Adding 3x trucks, 3x trailers to VA5774 (additional VINs listed in bold).	22/02/19
3	6132	1	Adding 1x truck, 1x trailer to VA6102 (additional VINs listed in bold).	01/03/19
4	8335	1A	Adding 14x trucks, 14x trailers to VA6132 (additional VINs listed in bold).	29/10/20
5	8335	2A	Adding 1x truck, 1x trailer (additional VINs listed in bold).	26/11/20
6	8335	3A	Adding 1x truck, 1x trailer (additional VINs listed in bold).	28/01/21
7	8335	4A	Adding 4x trucks, 4x trailers (additional VINs listed in bold).	29/05/21

## General access for a specified PBS vehicle

The vehicle combination(s) listed in this PBS Vehicle Approval qualify for general access to the road network under the *specified PBS vehicle* provisions of the Heavy Vehicle National Law. A specified PBS vehicle must comply with all applicable requirements of Schedule 1 of the *Heavy Vehicle (Mass, Dimension and Loading) National Regulation* (HV(MDL)NR).

## Specified PBS vehicle mass limits

1. The maximum allowable mass of a specified PBS vehicle is the lesser of the maximum PBS Level 1 GML stated in this Vehicle Approval and the relevant mass limit prescribed in Part 1, section 2, Schedule 1 of the HV(MDL)NR.
2. The maximum allowable mass of an axle group on a specified PBS vehicle is the lesser of the maximum PBS Level 1 GML axle group mass limit stated in this Vehicle Approval and the axle group mass limit prescribed in “Table 1—Axle mass limits table” in Schedule 1 of the HV(MDL)NR.
3. The maximum allowable mass between any two axles or axle groups on a specified PBS vehicle is the relevant prescribed mass limit in “Table 2—Axle spacing mass limits general table” in Schedule 1 of the HV(MDL)NR.

## Specified PBS vehicle operating conditions

1. When operating as a general access vehicle, a specified PBS vehicle must comply with all operating conditions of its Vehicle Approval that apply at Level 1. This includes payload heights, the drive axle mass requirement, approved tyre options and all operating conditions that do not specify a level of access.
2. The regulation includes a requirement about towing ratios. Loading and unloading must be managed so that the trailer mass does not exceed the mass of the towing vehicle.

## For more information

For more information visit our [PBS vehicle access permit page](#) under Access management.

## Disclaimer

The information on this page is general guidance only and does not constitute legal advice. Consider whether you require Independent legal advice to address your particular circumstances.

## Important information

As per Heavy Vehicle National Law Section 153, the driver must keep in the driver's possession a copy of this Vehicle Approval and be able to produce it for inspection by compliance officers. Penalties apply.

If changes or modifications are required, these are limited to the specifications contained in the relevant PBS Design Approval and the Application for Design Approval Part A and B. Contact the applicant (see the cover page on this document) for information related to the allowed specifications.

A change of components and/or dimensions must be certified by an approved PBS certifier and an updated version of this Vehicle Approval must be obtained. A change of tyres, outside of the list contained on this Vehicle Approval, also requires approval but will not require an inspection by a PBS certifier.

## Road access

This is not an authorisation to access the road network. You must comply with the relevant Notice or obtain an access permit.

Please note that if you add vehicles to a PBS Vehicle Approval you will need to update the access permit to reflect the latest Vehicle Approval. If the new vehicles have different masses or dimensions to what is already approved, the NHVR will have to seek Road Manager consent again; which may extend the time required to issue the new permit.

For more information on the PBS Truck and Dog Notice visit [National class 2 PBS level 1 and 2A truck and dog trailer authorisation notice 2016](#).

To apply for an access permit, visit the [NHVR Portal](#). You must supply a route ID when applying for an access permit. Use Route Planner to obtain your route ID, you can do this as part of the permit application process in the [NHVR Portal](#).

For further assistance please visit our website at [www.nhvr.gov.au](http://www.nhvr.gov.au) or call 1300 MYNHVR (1300 696 487).

For queries relating to this document please contact the PBS Coordinator at [pbs@nhvr.gov.au](mailto:pbs@nhvr.gov.au).

## Transfer of Vehicle Approval

When applying for an access permit for a PBS vehicle, a PBS Vehicle Approval must be in the name of the company that operates the vehicle on the road.

If/ when a PBS combination is sold, the PBS Vehicle Approval has to be transferred across to the new owner.

To transfer a PBS Vehicle Approval to a new owner, use a [Vehicle Approval transfer application form](#).