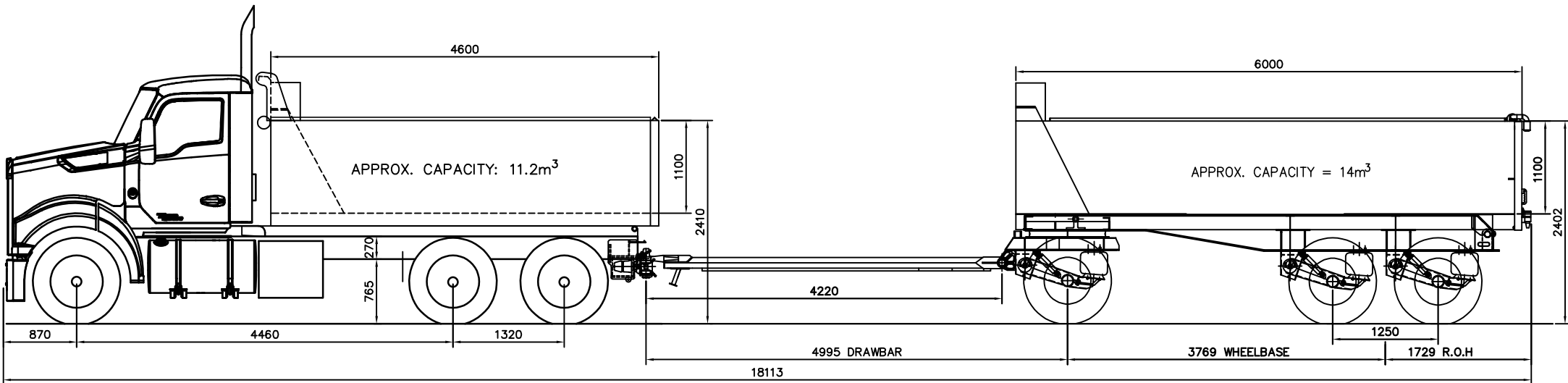


Truck Make: Kenworth T410 SAR	Trailer Make: DT3-QT-TMC
Truck Body Dimensions: 4600 x 1100 Approx. Capacity: 11.2m ³	Trailer Body Dimensions: 6000 x 1100 Approx. Capacity: 14.0m ³
Tow hitch: Rockinger Hydraulic Tank: Already existing	Trailer ATM: 26t Drawbar Length: 4995mm
Approx. O/A length of combination: 18113mm	

APPROX. PBS MASS ACHIEVABLE			
PBS	Level 1	PBS	Level 2
GML (t)	48.5	GML (t)	48.5
		CML (t)	49.5
		HML (t)	49.5
*Subject to variation depending on manufacturing allowances and final inspection by a PBS certifier			



Notes:

1. The combination shown is subject to final PBS approval.
2. The PBS mass shown above may slightly vary depending on manufacturing allowances and actual PBS measurement by a PBS certifier.
3. Above weights include 0.5t extra, considering your truck is eligible for steer axle mass exemption.
4. Please consult with NHVR/local road authority to ensure correct permits are available for this combination, because some combinations may need permits.
5. The gross combination mass must be lesser than rated truck GCM.
6. Truck drawing is a representation only. Please check drawing to ensure truck dimensions on drawing matches your existing truck or is as per your requirement.

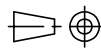
Customer:	Scope Investments
Truck Details:	Kenworth T410 SAR
Truck VIN No:	6F5000000RA488298
Trailer Job No:	24R104
Trailer VIN No:	629DT243ARS364104

GORSKI ENGINEERING PTY LTD

PH: +61-3-9308 5433 Email: engineering@gorski.com.au

Model Code:	PBS-QT-TR-BON-DT3	Rev:	
Description:	Truck & DT3 Combo	All dimensions in millimetres	

COPYRIGHT 2024 © GORSKI ENGINEERING PTY LTD

Drawn	Date	Scale	 3rd angle projection
A.M.	06.09.2024	N.T.S.	

Performance Based Standards (PBS) Vehicle Approval

Heavy Vehicle National Law Section 23

Heavy Vehicle (General) National Regulation Section 17

This is not an authorisation to access the road network.
You must comply with the relevant Notice or if required, obtain an access permit.

19 April 2022

Ref No: PBS – V180306 – VA10954 – Tiger Spider / Scope Investments (Vic) – v1A

This PBS Vehicle Approval modifies any previously issued approval for the vehicle(s) listed herein operating under Application Number V180306 .

Applicant details	Marcus Coleman Tiger Spider Suite 106/181 St Kilda Rd St Kilda VIC 3182	Operator	Scope Investments (Vic) 140 Victoria St North Geelong VIC 3215
-------------------	--	----------	--

Application Number	V180306	Vehicle	3-axle truck 3-axle dog
Load	Quarry and Bulk; Bin	Length (mm)	≤ 18050
Assessor	Marcus Coleman	Height (mm)	≤ 4300

Combination Matrix

For each Truck and Trailer, the corresponding drawing reference number, dimension set number and mass table number/s are listed below. The dimension set number e.g., 'Original' indicates the maximum allowable payload heights and/or allowable tyre options for the corresponding Truck and Trailer - refer to the Operating Conditions and Approved Tyre Options sections on this VA.

New VINs added in this VA are listed in bold.

Truck 1	Truck 2
6F5000000NA474602	6F5000000NA474603

Trailer 1	Trailer 2
6T9T24V86NA5TH015	6T9T24V86NA5TH021

	Trailer 1	Trailer 2
Truck 1	Original Table 1	NA
Truck 2	NA	Original Table 1

Table 1
Truck 1 and Trailer 1
Truck 2 and Trailer 2

Mass Limits	Level 1	Axle Group Masses	Level 1		
			GML	CML	HML
GML (t)	48.5	Steer (t)	6.5	6.5	6.5
CML (t)	49.5	Drive (t)	16.5	17.0	17.0
HML (t)	49.5	Trailer Front (t)	9.0	9.0	9.0
Bridge Assessment	Tier 1	Trailer Rear (t)	16.5	17.0	17.0

Operating conditions

The NHVR approves the vehicles listed herein for the level(s) shown in the “Mass Limits” table with the following operating conditions:

1. The total combination mass must not exceed the limits in the “Mass Limits” table.
2. The axle group masses must not exceed the limits in the “Axle Group Masses” table.
3. If the “Mass Limits” table specifies Tier 2 or Tier 3, a bridge assessment is required.
4. Maximum payload heights measured from the ground must not exceed: (m)

Original	Heaped payload	Water level payload
Truck	3.100	2.900
Trailer	3.100	2.900

5. 6.5 tonne complying steer axle requirements:
 - an engine that complies with the engine emission standards of Australian Design Rule (ADR) 80/01 (Euro 4) or a later version of ADR 80; and
 - a front underrun protection device (FUPD) that complies with UN ECE Regulation 93 or ADR 84; and
 - a cabin that complies with UN ECE Regulation 29.
6. Concessional Mass Limits (CML) requirements:
 - a National Heavy Vehicle Accreditation Scheme (NHVAS) – Mass Management Accreditation must be in force for all motor vehicles listed on this vehicle approval.
7. Higher Mass Limits (HML) requirements:
 - for tandem axles groups, road friendly suspensions.
8. When operating at Level 1, there is a minimum mass requirement for the drive axle group. The mass on the drive axle group must be at least 26% of the total combination mass e.g. at 50.5t total combination mass, $50.5 \times 0.26 = 13.1\text{t}$ is required on the drive axle group. This clause does not apply to an unladen vehicle.

Exemptions

Heavy Vehicle National Law Section 24

Heavy Vehicle (General) National Regulation Section 28

The following table lists exemptions from prescribed vehicle standards that have been granted for the vehicle(s) in this vehicle approval.

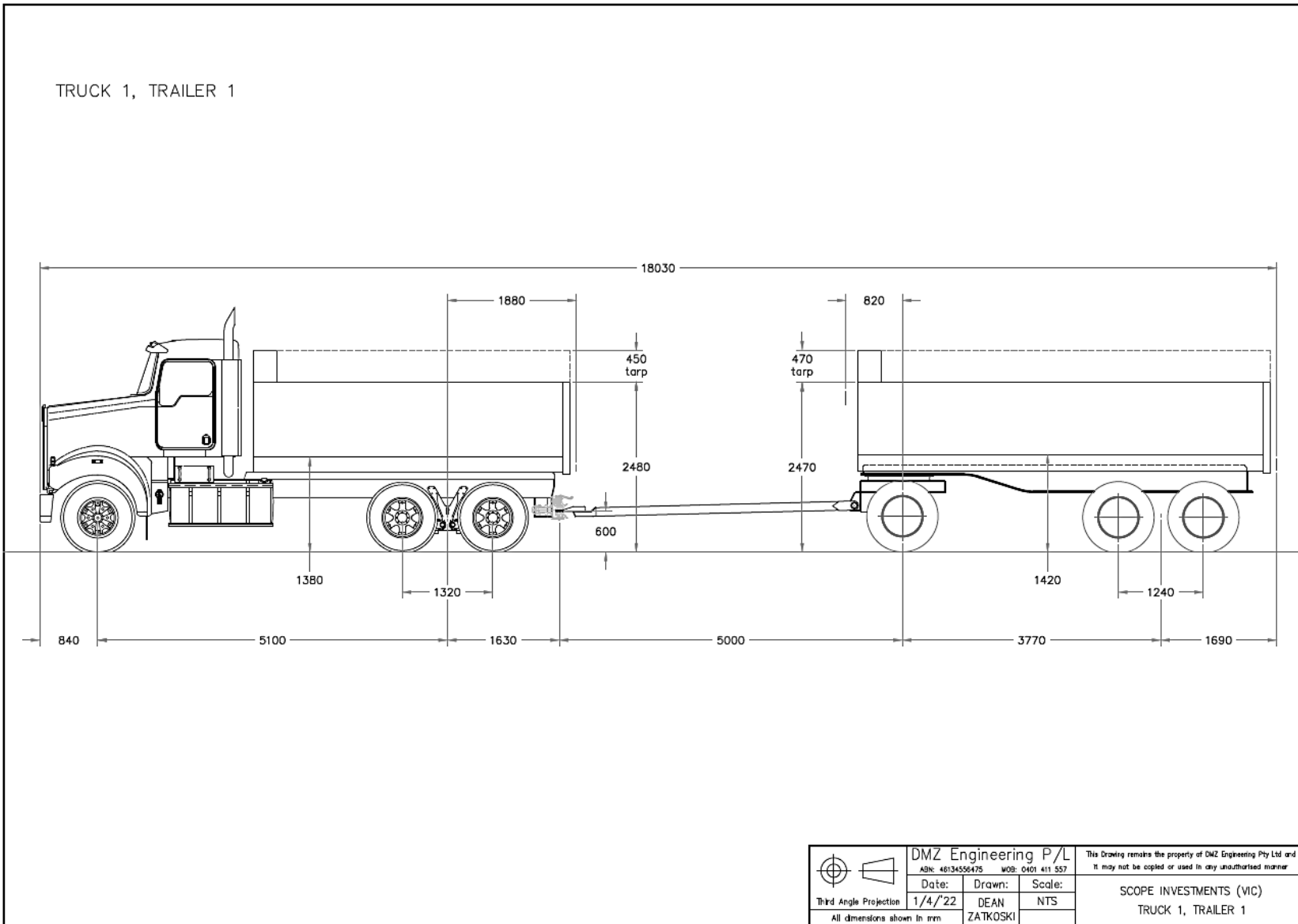
Exemptions	
ADR	NA
HV(MDL)NR	NA
HV(VS)NR	NA

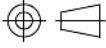
ADR Australian Design Rules

HV(MDL)NR *Heavy Vehicle (Mass, Dimension and Loading) National Regulation*

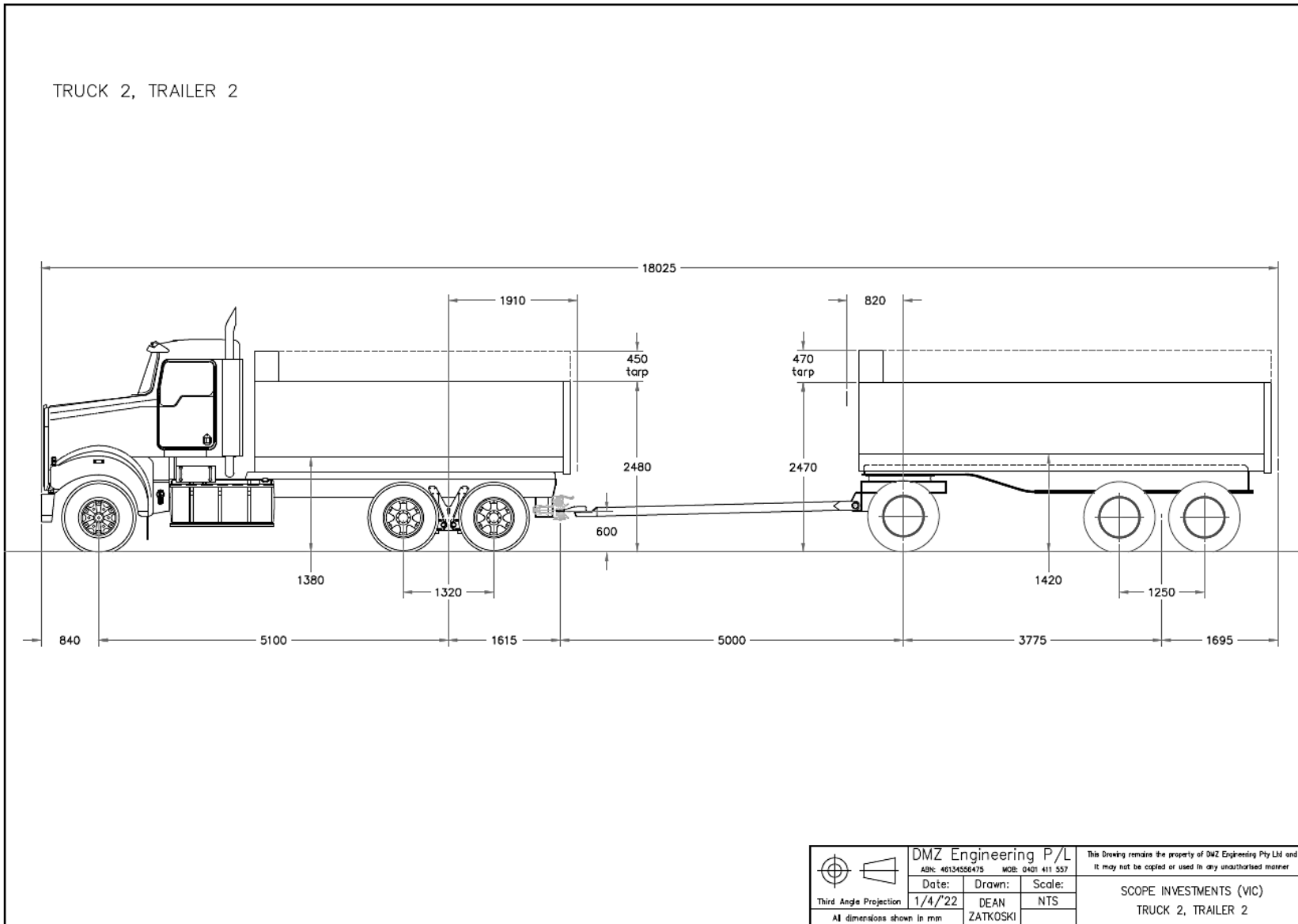
HV(VS)NR *Heavy Vehicle (Vehicle Standards) National Regulation*

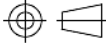
TRUCK 1, TRAILER 1



 Third Angle Projection All dimensions shown in mm	DMZ Engineering P/L ABN: 46134556475 WOB: 0401 411 557			This Drawing remains the property of DMZ Engineering Pty Ltd and it may not be copied or used in any unauthorised manner
	Date: 1/4/22	Drawn: DEAN ZATKOSKI	Scale: NTS	

TRUCK 2, TRAILER 2



 Third Angle Projection All dimensions shown in mm	DMZ Engineering P/L ABN: 46134556475 MGB: 0401 411 557			This Drawing remains the property of DMZ Engineering Pty Ltd and it may not be copied or used in any unauthorised manner
	Date:	Drawn:	Scale:	
	1/4/22	DEAN ZATKOSKI	NTS	SCOPE INVESTMENTS (VIC) TRUCK 2, TRAILER 2

Details of truck(s) or prime mover(s) – Truck 1

Make	Kenworth
Model	T410SAR
VIN(s)	6F5000000NA474602
Engine make/ model/ rating	Paccar MX-13 502Hp
Transmission make/ model	Eaton Fuller FO- 20E318A MXP
Differential make/ model/ FD ratio	Meritor RT46-160GP, FDR: 4.30:1
Suspension make/ model (Steer)	Kenworth Leaf Spring 7.2t
Suspension make/ model (Drive)	Kenworth Airglide 400
Tyres make/ size/ model (Steer)	295/80R22.5
Tyres make/ size/ model (Drive)	11R22.5 Goodyear G667+
Brakes (Load Proportioning, ABS, ECB, etc.)	EBS
Tow coupling make/ D rating	50mm Pin type coupling, D-285kN
Wheelbase (mm)	5100
Vehicle height (Measured from the ground) (mm)	2480
Number of axles	3
ADR category	NC
GVM (kg)	24,700
GCM (kg)	70,000
Comments/ notes:	

Details of truck(s) or prime mover(s) – Truck 2

Make	Kenworth
Model	T410SAR
VIN(s)	6F5000000NA474603
Engine make/ model/ rating	Paccar MX-13 502Hp
Transmission make/ model	Eaton Fuller FO- 20E318A MXP
Differential make/ model/ FD ratio	Meritor RT46-160GP, FDR: 4.30:1
Suspension make/ model (Steer)	Kenworth Leaf Spring 7.2t
Suspension make/ model (Drive)	Kenworth Airglide 400
Tyres make/ size/ model (Steer)	295/80R22.5
Tyres make/ size/ model (Drive)	11R22.5 Goodyear G667+
Brakes (Load Proportioning, ABS, ECB, etc.)	EBS
Tow coupling make/ D rating	50mm Pin type coupling, D-285kN
Wheelbase (mm)	5100
Vehicle height (Measured from the ground) (mm)	2480
Number of axles	3
ADR category	NC
GVM (kg)	24,700
GCM (kg)	70,000
Comments/ notes:	

Details of trailer(s) or dolly(s) – Trailer 1

Type	3 Axle Dog Tipper
Make	Tip Trailers R Us
Model	TTRU-3ADT
VIN(s)	6T9T24V86NA5TH015
Suspension make/ model	TMC LMV Series 360mm
Tyres make/ size/ model	11R22.5 Firestone FT469
Drawbar length (mm)	5000
Coupling make/ D rating	Front: 50mm Towing Eye, D-314kN Rear: Ballrace D-162kN
Brakes (Load Proportioning, ABS, ECB, etc.)	EBS
Wheelbase (mm)	3770
Vehicle height (Measured from the ground) (mm)	2470
Number of axles	3
ADR category	TD
ATM (kg)	26,000
Comments/ notes:	

Details of trailer(s) or dolly(s) – Trailer 2

Type	3 Axle Dog Tipper
Make	Tip Trailers R Us
Model	TTRU-3ADT
VIN(s)	6T9T24V86NA5TH021
Suspension make/ model	TMC LMV Series 360mm
Tyres make/ size/ model	11R22.5 Firestone FT469
Drawbar length (mm)	5000
Coupling make/ D rating	Front: 50mm Towing Eye, D-314kN Rear: Ballrace D-162kN
Brakes (Load Proportioning, ABS, ECB, etc.)	EBS
Wheelbase (mm)	3775
Vehicle height (Measured from the ground) (mm)	2470
Number of axles	3
ADR category	TD
ATM (kg)	26,000
Comments/ notes:	

Approved tyre options – Original

Steer –

- 295/80R22.5, 385/65R22.5, 315/80R22.5, 11R22.5

Drive –

PBS Reference Tyre TS001 –

- **11R22.5** Dunlop SP430, General RA, Triangle TR668, Haulmax ATT101, ATT202
- **275/70R22.5** Goodyear LHD II, Michelin X Multi D
- **295/60R22.5** Goodyear LHD II
- **295/80R22.5** Jinyu JF568, JY529, Continental HD Hybrid

Or

- **11R22.5** Continental HDR2+, Michelin X Multi D, Dunlop SP431, Goodyear G667, G182, RSD, Haulmax ATT101
- **11R22.5** Goodyear G667+

Trailer –

PBS Reference Tyre TS001 –

- **11R22.5** Dunlop SP430, SP431, General RA, Loadrunner LR735R, O'Green AG735, Treadline TL735F, Bridgestone R109, R168, R187, R285Z, R295Z, Continental HT3, Goodyear LHT, Firestone FS567, Michelin XZA, XTE 2, Haulmax ATT101, ATT202
- **315/80R22.5** TechKing TKAM IIs
- **255/70R22.5** Goodyear LHT II
- **265/70R19.5** Goodyear LHT
- **295/80R22.5** Haulmax ATT101, ATT202
- **305/70R22.5** Michelin XZU2T
- **11R22.5** Firestone FT469

Retread tyres are permitted on the steer axle.

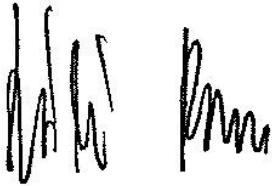
Tyre load ratings must be appropriate for the axle mass.

Tyres listed herein are specific for PBS application number V180306.

A different list of tyres will apply for other combination types and different PBS application numbers.

Declaration

I, Laszlo Bruzsa Chief Engineer, delegate of the National Heavy Vehicle Regulator, approve this PBS Vehicle Approval PBS–V180306 –VA10954.



Laszlo (Les) Bruzsa
Chief Engineer
National Heavy Vehicle Regulator
Dated: 19/04/22

Revision table

N	VA	Vers	Brief description	Date
1	10954	1A	First issue.	19/04/22

General access for a specified PBS vehicle

The vehicle combination(s) listed in this PBS Vehicle Approval qualify for general access to the road network under the *specified PBS vehicle* provisions of the Heavy Vehicle National Law. A specified PBS vehicle must comply with all applicable requirements of Schedule 1 of the *Heavy Vehicle (Mass, Dimension and Loading) National Regulation* (HV(MDL)NR).

Specified PBS vehicle mass limits

1. The maximum allowable mass of a specified PBS vehicle is the lesser of the maximum PBS Level 1 GML stated in this Vehicle Approval and the relevant mass limit prescribed in Part 1, section 2, Schedule 1 of the HV(MDL)NR.
2. The maximum allowable mass of an axle group on a specified PBS vehicle is the lesser of the maximum PBS Level 1 GML axle group mass limit stated in this Vehicle Approval and the axle group mass limit prescribed in “Table 1—Axle mass limits table” in Schedule 1 of the HV(MDL)NR.
3. The maximum allowable mass between any two axles or axle groups on a specified PBS vehicle is the relevant prescribed mass limit in “Table 2—Axle spacing mass limits general table” in Schedule 1 of the HV(MDL)NR.

Specified PBS vehicle operating conditions

1. When operating as a general access vehicle, a specified PBS vehicle must comply with all operating conditions of its Vehicle Approval that apply at Level 1. This includes payload heights, the drive axle mass requirement, approved tyre options and all operating conditions that do not specify a level of access.
2. The regulation includes a requirement about towing ratios. Loading and unloading must be managed so that the trailer mass does not exceed the mass of the towing vehicle.

For more information

For more information visit our [PBS vehicle access permit page](#) under Access management.

Disclaimer

The information on this page is general guidance only and does not constitute legal advice. Consider whether you require Independent legal advice to address your particular circumstances.

Important information

The driver must keep in the driver's possession a copy of this Vehicle Approval and be able to produce it for inspection by compliance officers. Penalties can apply.

If changes or modifications are required, these are limited to the specifications contained in the relevant PBS Design Approval and the Application for Design Approval Part A and B. Contact the applicant (see the cover page on this document) for information related to the allowed specifications.

A change of components and/or dimensions must be certified by an approved [PBS Certifier](#) and an updated version of this Vehicle Approval must be obtained. A change of tyres, outside of the list contained on this Vehicle Approval, also requires approval but will not require an inspection by a PBS Certifier.

Road access

The PBS Vehicle Approval is not an authorisation to access the road network. You must comply with the relevant Notice or obtain an access permit. To apply for an access permit, visit the [NHVR Portal](#).

For more information on PBS Notices visit:

[National Class 2 PBS Level 1 & 2a Truck and Dog Trailer Authorisation Notice 2021 \(No.1\)](#)

[National Class 2 Performance Based Standards \(High Productivity\) Authorisation Notice](#)

[National Class 2 Performance Based Standards \(Tier 1\) Authorisation Notice 2021](#)

If you add vehicles to your PBS Vehicle Approval, the PBS Vehicle Approval number may change depending on the new vehicles added. If the PBS Vehicle Approval number has changed, and your access permit references a PBS Vehicle Approval number, your access permit will need to be amended to reflect the latest Vehicle Approval number. Note that most truck and dog access permits will not reference a PBS Vehicle Approval number and therefore changes to the Vehicle Approval do not require an update to the access permit. Watch [Adding vehicles to a PBS Vehicle Approval](#) video on our YouTube channel.

For more information, please visit our website at www.nhvr.gov.au or call 13 NHVR (13 64 87).

For queries relating to this document please contact the PBS Team at pbs@nhvr.gov.au.

Transfer of PBS Vehicle Approval

When applying for an access permit for a PBS vehicle, a PBS Vehicle Approval must be in the name of the company that operates the vehicle on the road.

If/ when a PBS combination is sold, the PBS Vehicle Approval must be transferred across to the new owner.

To transfer a PBS Vehicle Approval to a new owner, use a [PBS Vehicle Approval Transfer Application form](#).