

Tru Hitch[®]

TRU-HITCH, INC. * 16 W. West Hill Road * Barkhamsted, Ct. 06063-3221
860-379-7772 * Fax 860-738-2777 * 1-800-450-8660 * tru.hitch @ snet.net

FIFTH WHEEL TOWING DEVICE (FWTD) MODEL 250MARTK NSN #2510-01-458-8253

SPECIFICATIONS

Curb Weight: 7,200 lbs (3,270 kg)
Lift Capacity: 30,000 lbs (13,600 kg)
Gross Combined Weight (GCW): 120,000 lbs (54,500 kg)

Length:
On Ground, Fully Extended: 342" (8690 mm)
Transport Configuration: 148" (3760 mm)

Width: 91" (2310 mm)

Height:
Towing Configuration: 162" max (4115 mm)
Transport Configuration: 58" (1470 mm)
On Ground: 113" (2870 mm)

Speeds:
Transporting:
Highway, Improved Roads: 50 mph (80 kph)
Unimproved Roads: 50 mph (80 kph)
Towing:
Highway, Improved Roads: 50 mph (80 kph)
Unimproved Roads: 35 mph (56 kph)
Off Road: 25 mph (40 kph)

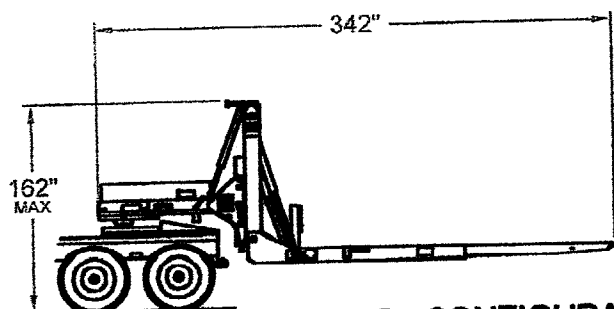
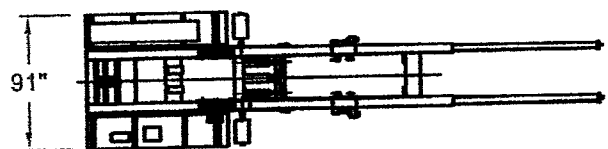
Winch: 10,000 lbs (4545kg)
20,000 lbs (9090 kg) w/ pulley block

Operation: Electric/Hydraulic, 12 or 24Volt
Solenoid / Manual Valves

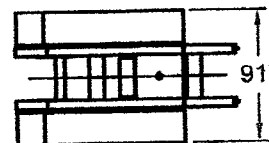
Hydraulics:
Self Contained: 3,000 psi max, 18 gal cap.
Air Lines: Glad Handles
Paint: Carc Green, Desert Sand
Lighting: 12V / 24V
Tie Downs: (10) D-rings
Air Transportability: C130 Deployable
Interchangeable King Pin: 2" or 3.5"

Accessories:

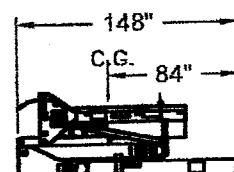
Tool Box	Eight Cribbing Blocks
Mud Flaps	Steel Fenders
Light cord	Hand Held Control
Strobe Lights	Tow bar Adapters
Frame Hooks	Wheel Stops
Chain & Binder Kit	Carwell



TOWING CONFIGURATION

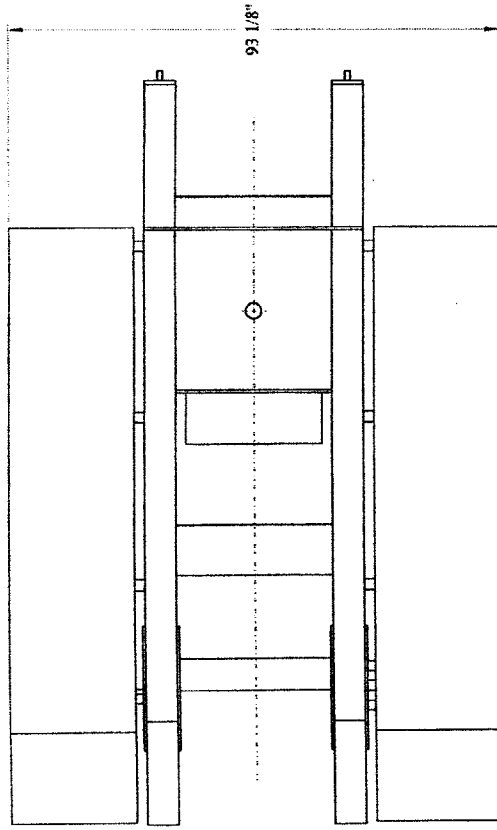


452 FT³



TRANSPORTING CONFIGURATION

TRU-HITCH MODEL 250M

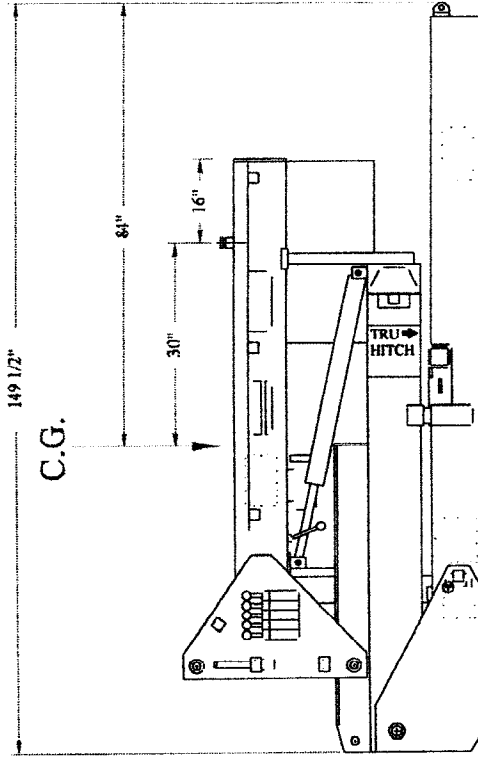


TOP VIEW

12 Feet 5.5 Inches

149 1/2"

C.G.

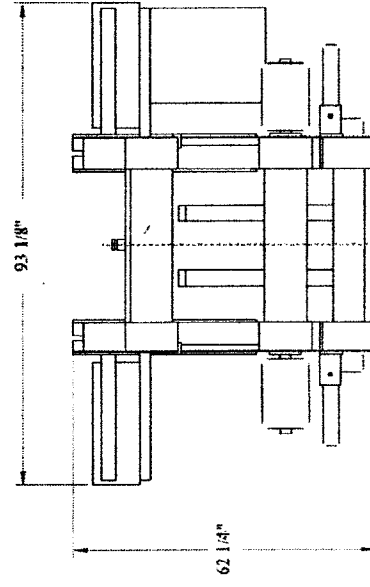


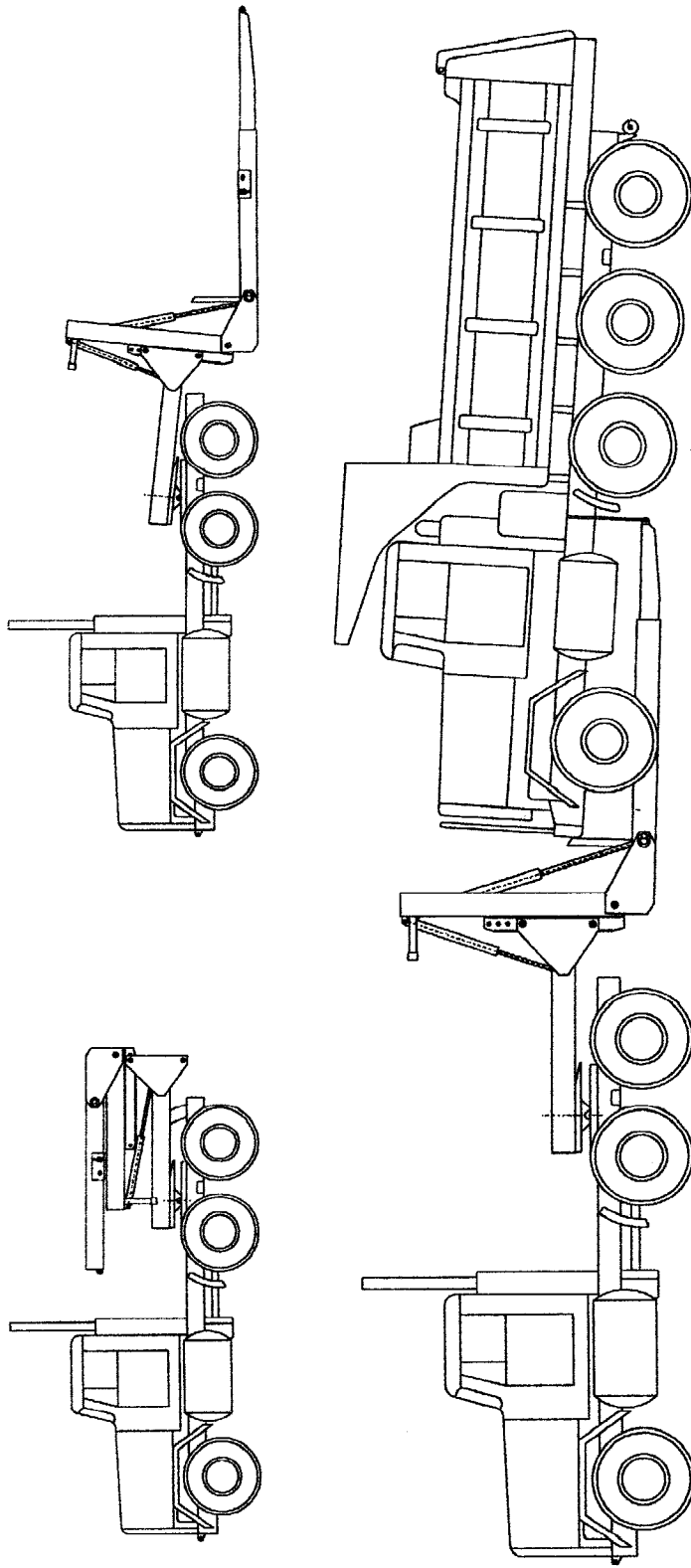
VIEW SITTING ON GROUND

TRU-HITCH Inc.

Patented - Proprietary Design TRU-HITCH Inc.

END VIEW





- 11 CONTROL VALVE LEVERS
21 HYDRAULIC PISTONS
31 BOOM
41 VERTICAL SLIDE SECTION
61 HORIZONTAL FRAME
61 TRAILER PIN
71 REAR SUPPORTS
- 81 REAR SUPPORT LEVER
91 BOOM EXTENSIONS
101 REAR HOOK-UP CHAINS
111 ADJUSTABLE RECEIVERS
121 PISTON SAFETY PIN
131 RIGHT & LEFT SAFETY CHAINS
141 6TH WHEEL SAFETY CHAIN
151 PIVOT HOLE
161 CAM VALVE - SAFETY STOP
171 SAFETY CLEVIS

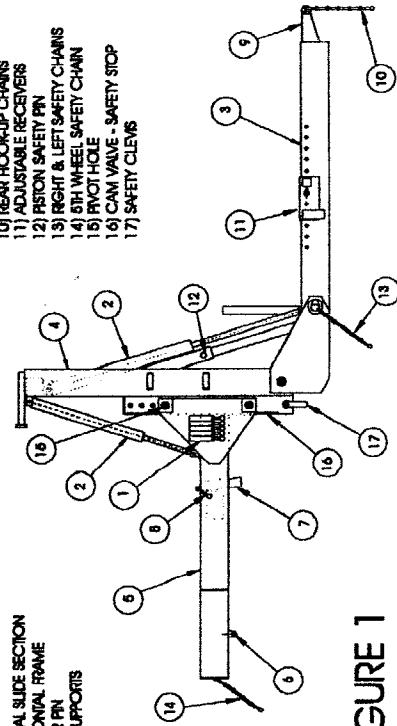
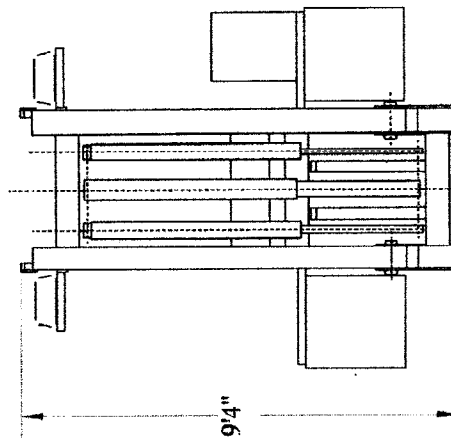
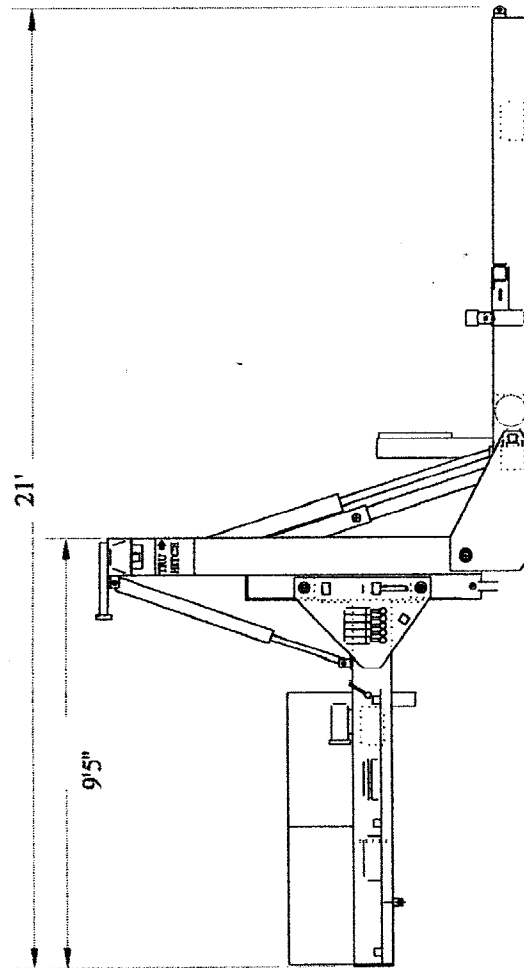
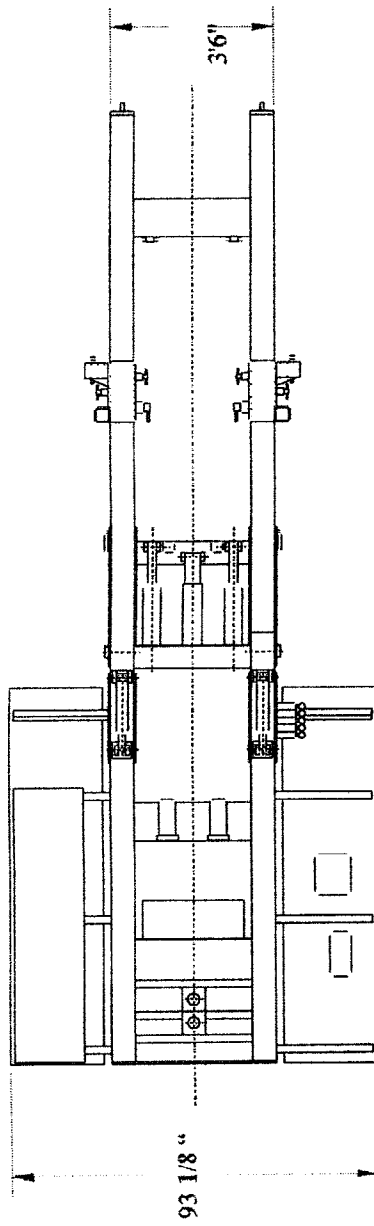


FIGURE 1

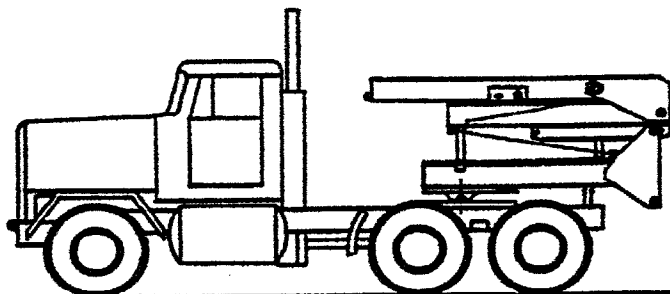


TRU-HITCH DIMENSIONS

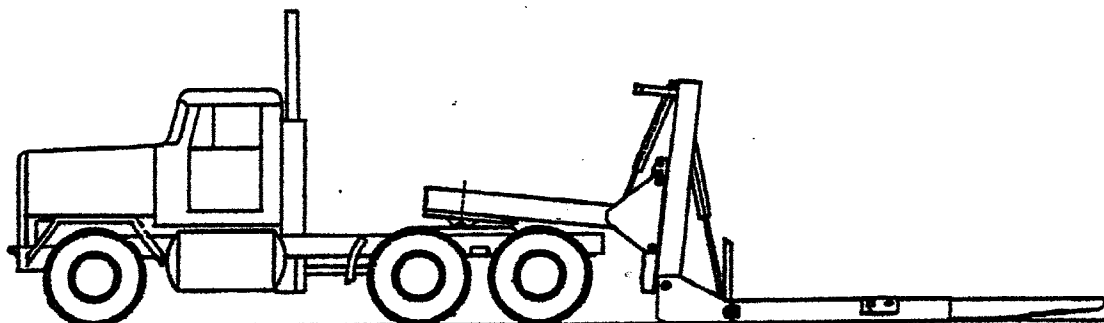
Patented - Proprietary Design TRU-HITCH INC.

Weight 7,200 Lbs NSN 2510-01-458-8253

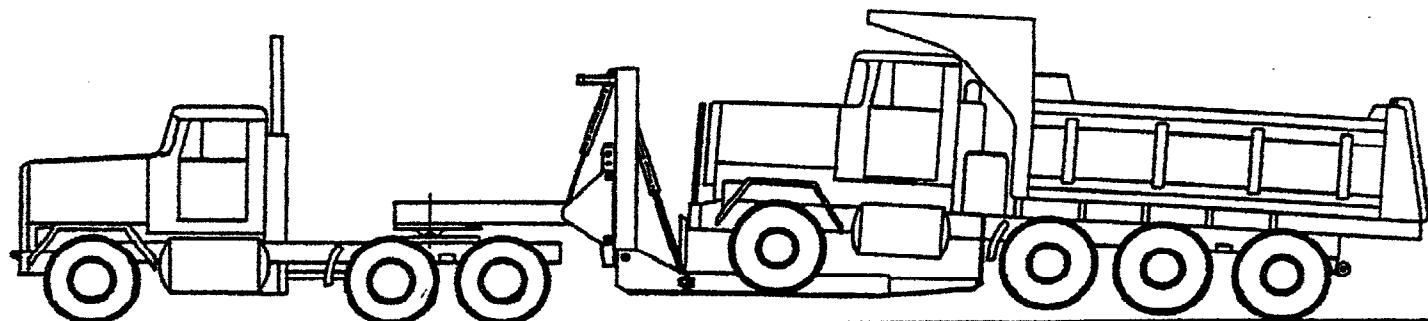
TRU-HITCH Inc.



In transit the Tru-Hitch folds compactly. It is coupled to any standard fifth wheel and rests on it's own retractable rear stand. No preparation of the truck is required.



In this position, the Tru-Hitch can be disconnected or coupled. No outside assistance is necessary.



In Tow, the Tru-Hitch is connected to the casualty and functions like a tractor-trailer combination. The weight distribution allows for safe and efficient towing. The Steer axle of the tractor actually gains weight. This means a controllable, LEGAL tow.