

PBS Vehicle Approval

Heavy Vehicle National Law Section 23

Heavy Vehicle (General) National Regulation Section 17

IMPORTANT

- This vehicle must be operated under a Notice or an access permit unless compliant with the Specified PBS Vehicle provision.
- The driver must carry a copy of this PBS Vehicle Approval and an associated access permit or notice and be able to produce readable copies (electronic or hard copy) if requested by Authorised Officers.
- All vehicle units in a combination (prime movers, trailers, dollies, etc.) must be listed on this VA.
- The driver must be able to identify the specific combination being driven within the VA.
- Failure to comply with the above can incur penalties for the operator and driver.

17 February 2025

Ref No: PBS – VA19098 – V170819 – v1A

This PBS Vehicle Approval modifies any previously issued approval for the vehicles listed herein operating under Application Number V170819 and is a modification of VA14209.

Design Approval Holder	Stephen Weatherhog THE JOHN SHEPHARD TRAILERS UNIT TRUST	Address	31 Arc Pl Larapinta QLD 4110
------------------------	--	---------	---------------------------------

Application Number	V170819	Vehicle	3-axle truck 4-axle dog
Load	Quarry and Bulk; Bin	Length (mm)	≤ 20000
Assessor	Daniel Nolan	Height (mm)	≤ 4300

Combination Matrix

For each Truck and Trailer, the corresponding drawing reference number, dimension set number and mass table numbers are listed below. The dimension set number e.g., ‘PBSAB-C2-D101’ indicates the maximum allowable payload heights and/or allowable tyre options for the corresponding Truck and Trailer - refer to the Operating Conditions and Approved Tyre Options sections on this VA.

New VINs added in this VA are listed in bold.

Truck 1	Make	GCM (t)	Truck 2		Make	GCM (t)
6FMM12H69HD808720	MAC	70	6FMM12H69JD809831	6FMM12H69JD810081	MAC	70
6FMM12H69HD808822			6FMM12H69JD809835	6FMM12H69JD810083		
6FMM12H69HD808850			6FMM12H69JD810008	6FMM12H69JD810291		
			6FMM12H69JD810013	6FMM12H69JD810295		

Truck 3	Make	GCM (t)	Truck 4	Make	GCM (t)
5KKHBEDR9LPLP5057	WS	90.5	6FMT14H69GD807808	MAC	70

Truck 5	Make	GCM (t)	Truck 6	Make	GCM (t)
6FMM12H69JD810000	MAC	70	6FMSL2GR2RD815429	MAC	70

Trailer 1	ATM (t)	Trailer 2		ATM (t)
6V9T24STEHC075057	34	6V9T24STEJC075061	6V9T24STEKC075007	34
6V9T24STEHC075058		6V9T24STEJC075062	6V9T24STEKC075010	
6V9T24STEHC075059		6V9T24STEJC075063	6V9T24STEKC075014	
		6V9T24STEJC075064	6V9T24STEKC075018	

Trailer 3	ATM (t)	Trailer 4	ATM (t)
6V9T24STEMC075001	35	6V9T24STESC075006	35
6V9T24STEMC075002			

	Trailer 1	Trailer 2	Trailer 3	Trailer 4
Truck 1	PBSAB-C2-D101 North American Variant Table 1, 2	PBSAB-C2-D101 North American Variant Table 1, 2	PBSAB-C2-D101 North American Variant Table 1, 2	PBSAB-C2-D101 North American Variant Table 1, 2
Truck 2	PBSAB-C2-D101 North American Variant Table 1, 2	PBSAB-C2-D101 North American Variant Table 1, 2	PBSAB-C2-D101 North American Variant Table 1, 2	PBSAB-C2-D101 North American Variant Table 1, 2
Truck 3	PBSAB-C2-D101 North American Variant Table 1, 2	PBSAB-C2-D101 North American Variant Table 1, 2	PBSAB-C2-D101 North American Variant Table 1, 2	PBSAB-C2-D101 North American Variant Table 1, 2
Truck 4	PBSAB-C2-D101 North American Variant Table 1, 2	PBSAB-C2-D101 North American Variant Table 1, 2	PBSAB-C2-D101 North American Variant Table 1, 2	NA
Truck 5	PBSAB-C2-D101 North American Variant Table 1, 2	PBSAB-C2-D101 North American Variant Table 1, 2	PBSAB-C2-D101 North American Variant Table 1, 2	PBSAB-C2-D101 North American Variant Table 1, 2
Truck 6	NA	NA	NA	PBSAB-C2-D101 North American Variant Table 1, 2

Table 1
Truck 1, 2, 3, 4, 5 and Trailer 1, 2, 3
Truck 1, 2, 3, 5, 6 and Trailer 4

Mass Limits	Level 1		Axle Group Masses	Level 1
				GML
GML (t)	50.5		Steer (t)	6.5
CML (t)	NA		Drive (t)	16.5
HML (t)	NA		Trailer Front (t)	13.75
Bridge Assessment	Tier 1		Trailer Rear (t)	13.75

Table 2
Truck 1, 2, 3, 4, 5 and Trailer 1, 2, 3
Truck 1, 2, 3, 5, 6 and Trailer 4

Mass Limits	Level 2		Axle Group Masses	Level 2		
				GML	CML	HML
GML (t)	56.0		Steer (t)	6.5	6.5	6.5
CML (t)	57.5		Drive (t)	16.5	17.0	17.0
HML (t)	57.5		Trailer Front (t)	16.5	17.0	17.0
Bridge Assessment	Tier 1		Trailer Rear (t)	16.5	17.0	17.0

Operating conditions

The NHVR approves the vehicles listed herein for the levels shown in the “Mass Limits” table with the following operating conditions:

1. The total combination mass must not exceed the limits in the “Mass Limits” table.
2. The axle group masses must not exceed the limits in the “Axle Group Masses” table.
3. If the “Mass Limits” table specifies Tier 2 or Tier 3, a bridge assessment is required.
4. Maximum payload heights measured from the ground must not exceed: (m)

North American Variant	Level 1		Level 2	
	Heaped payload	Water level payload	Heaped payload	Water level payload
Truck	NA	2.920	NA	2.920
Trailer		3.000		2.950

5. 6.5 tonne complying steer axle requirements:
 - an engine that complies with the engine emission standards of Australian Design Rule (ADR) 80/01 (Euro 4) or a later version of ADR 80; and
 - a front underrun protection device (FUPD) that complies with UN ECE Regulation 93 or ADR 84; and
 - a cabin that complies with UN ECE Regulation 29.
6. Concessional Mass Limits (CML) requirements:
 - a National Heavy Vehicle Accreditation Scheme (NHVAS) – Mass Management Accreditation must be in force for all motor vehicles listed on this vehicle approval.
7. Higher Mass Limits (HML) requirements:
 - for tandem axles groups, road friendly suspensions.
8. When operating at Level 1, there is a minimum mass requirement for the drive axle group. The mass on the drive axle group must be at least 26% of the total combination mass e.g. at 50.5t total combination mass, $50.5 \times 0.26 = 13.1\text{t}$ is required on the drive axle group. This clause does not apply to an unladen vehicle.
9. When operating at Level 2, there is a minimum mass requirement for the drive axle group. The mass on the drive axle group must be at least 19.7% of the total combination mass e.g. at 56t total combination mass, $56 \times 0.197 = 11\text{t}$ is required on the drive axle group. This clause does not apply to an unladen vehicle.

Exemptions

Heavy Vehicle National Law Section 24

Heavy Vehicle (General) National Regulation Section 28

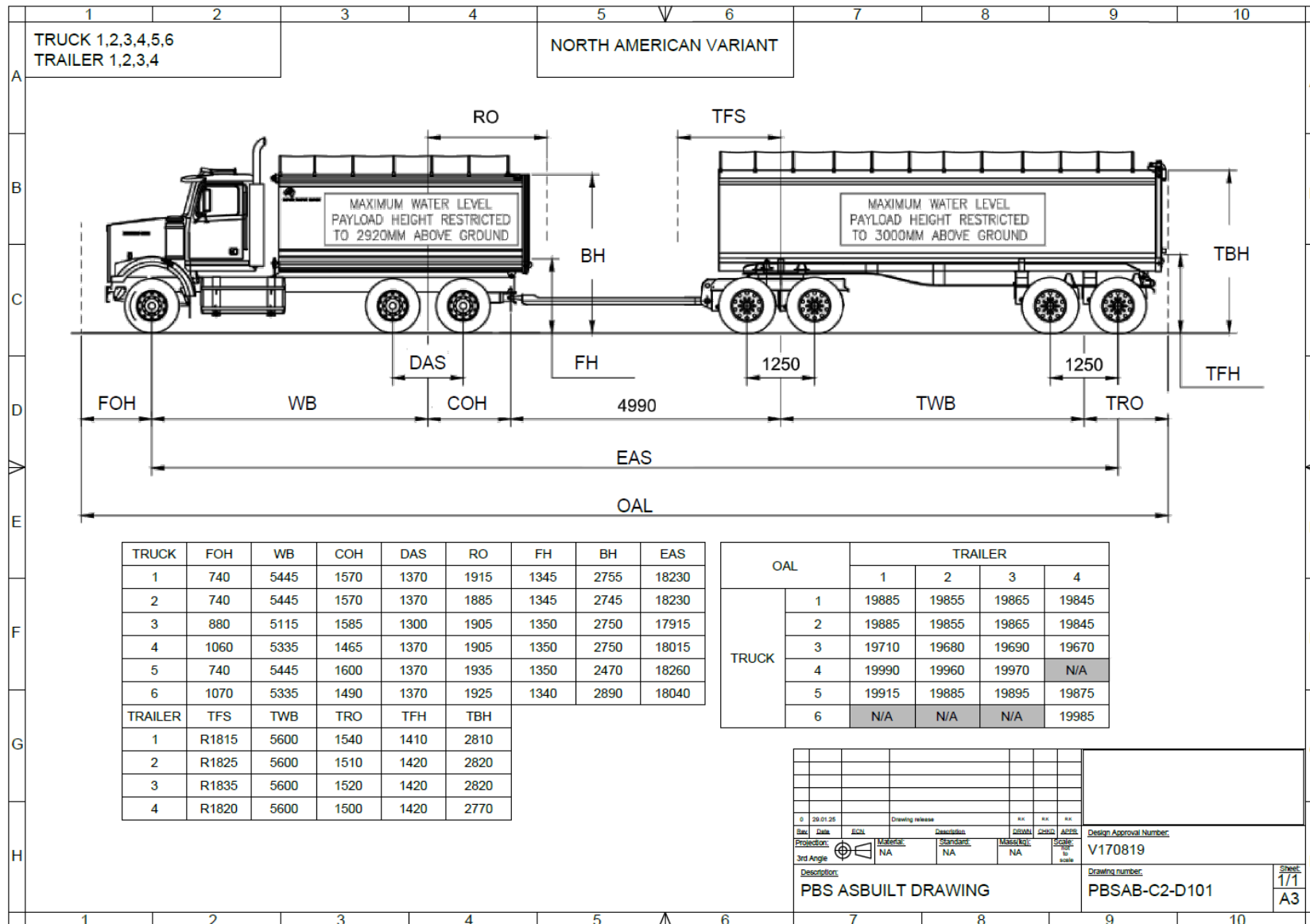
The following table lists exemptions from prescribed vehicle standards that have been granted for the vehicles in this vehicle approval.

Exemptions	
ADR	NA
HV(MDL)NR	Schedule 6, Section 3 (Length – General)
HV(VS)NR	NA

ADR Australian Design Rules

HV(MDL)NR *Heavy Vehicle (Mass, Dimension and Loading) National Regulation*

HV(VS)NR *Heavy Vehicle (Vehicle Standards) National Regulation*



Approved tyre options – (North American Variant)

Steer –

6.5t axle mass limit

- **11R22.5** (Load Index **149** or higher, single configuration)
- **295/80R22.5** (Load Index **152** or higher, single configuration)
- **315/80R22.5** (Load Index **156** or higher, single configuration)
- **385/65R22.5** (Load Index **158** or higher, single configuration)
- **305/70R22.5** (Load Index **150** or higher, single configuration)
- **315/70R22.5** (Load Index **152** or higher, single configuration)

6.0t axle mass limit

- **11R22.5** (Load Index **146** or higher, single configuration)

Drive –

- **11R22.5** (Load Index **142** or higher, dual configuration)
- **295/80R22.5** (Load Index **147** or higher, dual configuration)

Trailer –

- **11R22.5** (Load Index **142** or higher, dual configuration)
- **275/70R22.5** (Load Index **144** or higher, dual configuration)

Tyre load index and inflation pressure must be appropriate for the axle mass (inflation pressures must be within legal inflation limits)

Retread tyres are only permitted on the drive and trailer axles.

Tyres listed herein are specific for PBS application number V170819.

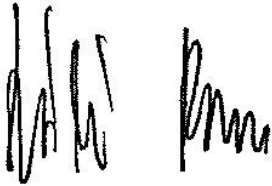
A different list of tyres will apply for other combination types and different PBS application numbers.

Axle spacings for as-built combinations - Truck and Dog (1-2-2-2)

Truck	Trailer	1-2	2-3	3-4	4-5	5-6	6-7	OAL
1, 2	1	4760	1370	5250	1250	4350	1250	19885
1, 2	2	4760	1370	5250	1250	4350	1250	19855
1, 2	3	4760	1370	5250	1250	4350	1250	19865
1, 2	4	4760	1370	5250	1250	4350	1250	19845
3	1	4465	1300	5300	1250	4350	1250	19710
3	2	4465	1300	5300	1250	4350	1250	19680
3	3	4465	1300	5300	1250	4350	1250	19690
3	4	4465	1300	5300	1250	4350	1250	19670
4	1	4650	1370	5145	1250	4350	1250	19990
4	2	4650	1370	5145	1250	4350	1250	19960
4	3	4650	1370	5145	1250	4350	1250	19970
5	1	4760	1370	5280	1250	4350	1250	19915
5	2	4760	1370	5280	1250	4350	1250	19885
5	3	4760	1370	5280	1250	4350	1250	19895
5	4	4760	1370	5280	1250	4350	1250	19875
6	4	4650	1370	5170	1250	4350	1250	19985

Declaration

I, Laszlo Bruzsa Chief Engineer, delegate of the National Heavy Vehicle Regulator, approve this PBS Vehicle Approval PBS–V170819 –VA19098.



Laszlo (Les) Bruzsa
 Chief Engineer
 National Heavy Vehicle Regulator
 Dated: 17/02/25

Revision table

N	VA	Vers	Brief description	Date
1	5630	1	First issue. Adding 6x trucks, 6x trailers to VA4095 (additional VINs listed in bold).	31/10/18
2	5630	1	Trailer VINs 6V9T24STEJC075065 and 6V9T24STEJC075066 corrected to 6V9T24STEKC075007 and 6V9T24STEKC075010 respectively.	15/02/19
3	6207	1	Adding 2x trucks, 2x trailers to VA5630 (additional VINs listed in bold).	19/03/19
4	8951	1A	Adding 2x trucks, 1x trailer to VA6207 (additional VINs listed in bold).	28/04/21
5	14209	1A	Adding 1x truck to VA8951 (additional VINs listed in bold).	19/07/23
6	14209	2A	Removing 3x trucks (6FMM12H69HD808888, 6FMM12H69HD808908, 6FMM12H69HD808943), 3x trailers (6V9T24STEHC075060, 6V9T24STEHC075061, 6V9T24STEHC075062) from VA14209. Adding VIN 6V9T24STEMC075002 back that was missed in error. Correcting trailer labelling. Updating Trailer 1 ROH from 1555 to 1540.	06/11/24
7	19098	1A	Adding 1x truck, 1x trailer to VA14209 (additional VINs listed in bold).	17/02/25

General access for a specified PBS vehicle

The vehicle combination(s) listed in this PBS Vehicle Approval qualify for general access to the road network under the *specified PBS vehicle* provisions of the Heavy Vehicle National Law. A specified PBS vehicle must comply with all applicable requirements of Schedule 1 of the *Heavy Vehicle (Mass, Dimension and Loading) National Regulation* (HV(MDL)NR).

Specified PBS vehicle mass limits

1. The maximum allowable mass of a specified PBS vehicle is the lesser of the maximum PBS Level 1 GML stated in this Vehicle Approval and the relevant mass limit prescribed in Part 1, section 2, Schedule 1 of the HV(MDL)NR.
2. The maximum allowable mass of an axle group on a specified PBS vehicle is the lesser of the maximum PBS Level 1 GML axle group mass limit stated in this Vehicle Approval and the axle group mass limit prescribed in “Table 1—Axle mass limits table” in Schedule 1 of the HV(MDL)NR.
3. The maximum allowable mass between any two axles or axle groups on a specified PBS vehicle is the relevant prescribed mass limit in “Table 2—Axle spacing mass limits general table” in Schedule 1 of the HV(MDL)NR.

Specified PBS vehicle operating conditions

1. When operating as a general access vehicle, a specified PBS vehicle must comply with all operating conditions of its Vehicle Approval that apply at Level 1. This includes payload heights, the drive axle mass requirement, approved tyre options and all operating conditions that do not specify a level of access.
2. The regulation includes a requirement about towing ratios. Loading and unloading must be managed so that the trailer mass does not exceed the mass of the towing vehicle.

For more information

For more information visit our [PBS vehicle access permit page](#) under Access management.

Disclaimer

The information on this page is general guidance only and does not constitute legal advice. Consider whether you require Independent legal advice to address your particular circumstances.

Important information

The driver must keep in the driver's possession a copy of this Vehicle Approval and be able to produce it for inspection by compliance officers. Penalties can apply.

If changes or modifications are required, these are limited to the specifications contained in the relevant PBS Design Approval and the Application for Design Approval Part A and B. Contact the applicant (see the cover page on this document) for information related to the allowed specifications.

A change of components and/or dimensions must be certified by an approved [PBS Certifier](#) and an updated version of this Vehicle Approval must be obtained. A change of tyres, outside of the list contained on this Vehicle Approval, also requires approval but will not require an inspection by a PBS Certifier.

If VA contains multiple tyre option tables, all tyre selections must be chosen from the same tyre options table. Tyres from different tyre options tables are not interchangeable.

Road access

The PBS Vehicle Approval is not an authorisation to access the road network. You must comply with the relevant Notice or obtain an access permit. To apply for an access permit, visit the [NHVR Portal](#).

For more information on PBS Notices visit:

[National Class 2 PBS Level 1 & 2a Truck and Dog Trailer Authorisation Notice 2021 \(No.1\)](#)

[National Class 2 Performance Based Standards \(High Productivity\) Authorisation Notice](#)

[National Class 2 Performance Based Standards \(Tier 1\) Authorisation Notice 2021](#)

If you add vehicles to your PBS Vehicle Approval, the PBS Vehicle Approval number may change depending on the new vehicles added. If the PBS Vehicle Approval number has changed, and your access permit references a PBS Vehicle Approval number, your access permit will need to be amended to reflect the latest Vehicle Approval number. Note that most truck and dog access permits will not reference a PBS Vehicle Approval number and therefore changes to the Vehicle Approval do not require an update to the access permit. For more information, watch [Adding vehicles to a PBS Vehicle Approval](#) video on our YouTube channel.

For more information, please visit our website at www.nhvr.gov.au or call 13 NHVR (13 64 87).

For queries relating to this document please contact the PBS Operations Team at pbs@nhvr.gov.au.

Manage your PBS Vehicle Approval

Please visit our [website](#) to view a list of available options and associated forms to manage your PBS Vehicle Approval.