



Plant: TD57 CAT D6T LGP Track Dozer

Zone: Zone All

Status: Submitted

Form Template: Dozer - 250 Hour Service (NEW)

Date Created: Tuesday, 20 January 2026, 9:45:11 AM (GMT+11:00)

Dozer - 250 Hour Service (NEW) - 1

Dozer 250 Hour Service Sheet

Accident Prevention

Read and understand safety warnings in the Operation and Maintenance Manual	Yes
Have you completed a Take 2?	Yes
Have your job circumstances changed since completing your Take 2?	Yes

Pre-Service Setup

Machine cleaned prior to service	Yes
Machine positioned on flat level ground	Yes
All implements lowered	Yes
Machine isolated and locked out	Yes

SAMPLE

Engine	Pass
Transmission	Pass

CLEAN

Batteries and terminals	Pass
Cab fresh air filter	Pass
Engine air pre-cleaner	Pass



Plant: TD57 CAT D6T LGP Track Dozer

Zone: Zone All

Status: Submitted

Form Template: Dozer - 250 Hour Service (NEW)

Date Created: Tuesday, 20 January 2026, 9:45:11 AM (GMT+11:00)

Engine breathers	Pass
Fuel cap, filter & strainer	Pass
Condenser	Pass

CHECK

Hydraulic system oil level	Pass
Transmission oil levels	Pass
Final drive oil level	Pass
Pivot shaft oil level	Pass
Recoil spring compartment oil	Pass
Equalizer bar end pin oil level	Pass
Equalizer bar end pin seals	Pass
Equalizer bar pads	Pass
Equalizer bar pads-Duplicate	N/A
Coolant level	N/A
Engine air filter secondary element	Pass
Drain fuel system water separator	Pass
Drain fuel tank water & sediment	Pass
Radiator	Pass
Battery cables	Pass
Battery electrolyte level	N/A
Fuses	Pass
Undercarriage	Fail
Comments	Chain stretched and worn , sprocket u/s



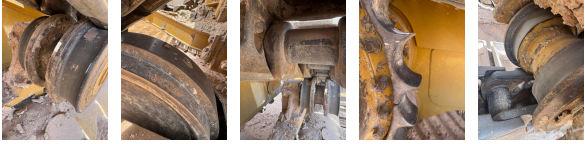
Plant: TD57 CAT D6T LGP Track Dozer

Zone: Zone All

Status: Submitted

Form Template: Dozer – 250 Hour Service (NEW)

Date Created: Tuesday, 20 January 2026, 9:45:11 AM (GMT+11:00)

Photos	 <p style="text-align: center;">(1) (2) (3) (4) (5)</p> <p style="text-align: center;">Find full page photos and PDFs at the end of the PDF</p>
--------	---

GREASE	
Fan bearings	Pass
Belt tensioner bearings	Pass
Universal joints	Pass
Fill auto grease system	N/A

MECHANICAL SERVICE	
Condition/tension of fan, alternator & A/C belts	Pass
Universal joints for wear	Pass
Air conditioner condition/operation	Pass
Operation of hydraulic controls	Pass
Steering operation	Pass
Service brake operation	Pass
Park brake operation	Pass
Frame and attachments for cracks	Pass
Fuel system bolts and fittings	Pass
Fuel line support clamps	Pass
Hydraulic system lines and fittings	Fail




Plant: TD57 CAT D6T LGP Track Dozer

Zone: Zone All

Status: Submitted

Form Template: Dozer – 250 Hour Service (NEW)

Date Created: Tuesday, 20 January 2026, 9:45:11 AM (GMT+11:00)

Comments	Tilt cylinder leaking
Photos	 (6) (7) Find full page photos and PDFs at the end of the PDF
Hoses – general condition/chafing	Pass
Cooling hoses/clamps	Pass
Induction system leaks/clamps	Pass
Engine mounts	Pass
ROPS & FOPS	Pass
Exhaust system (leaks/clamps/bolts)	Pass
Radiator for debris (wash if needed)	Pass
All grease points receiving grease	Pass
Park brake interlock operation	Pass
Fan hub & jockey pulley bearing movement	Pass
Seat belt – retainers and operation	Pass

SAFETY CHECKS

Horns – air/electric	Pass
Wipers	Pass
Mirrors	Pass
Seats – suspension adjustment/condition	Pass
Doors	Pass
Windows	Pass




Plant: TD57 CAT D6T LGP Track Dozer

Zone: Zone All

Status: Submitted

Form Template: Dozer – 250 Hour Service (NEW)

Date Created: Tuesday, 20 January 2026, 9:45:11 AM (GMT+11:00)

Gauges	Pass
Grab rails	Pass
Fire extinguishers – invert & shake	Pass
Fire suppression bottle charge	N/A
Lights	Pass
Reverse alarm	Pass
Cab condition	Pass
Audible alarms and warning lights	Pass
Emergency stop operation	Pass
Engine shutdown system	Pass
Steps	Pass
Nose cone pin & bush	Pass
Equalizer bar pin movement	Pass
Accumulated fuel/oil/grease (fire hazard)	Pass
Fuel leaks	Pass
Inspect GET Conditions	Pass
Inspect Undercarriage Conditions	Fail
Comments	See photos above
Photos	 (8) Find full page photos and PDFs at the end of the PDF

Service Completion Sign-Off



Plant: TD57 CAT D6T LGP Track Dozer

Zone: Zone All

Status: Submitted

Form Template: Dozer - 250 Hour Service (NEW)

Date Created: Tuesday, 20 January 2026, 9:45:11 AM (GMT+11:00)

Service Completed by:

Dennis Geboers

Defects identified within this document

ID	Name	Date Created	Actual Completion Date	Status
429	Undercarriage	20 Jan 2026		In Progress
430	Hydraulic system lines and fittings	20 Jan 2026		In Progress



Plant: TD57 CAT D6T LGP Track Dozer

Zone: Zone All

Status: Submitted

Form Template: Dozer - 250 Hour Service (NEW)

Date Created: Tuesday, 20 January 2026, 9:45:11 AM (GMT+11:00)

Photo (1)



Captured by: Candice Zoch

Captured on: Tuesday, 20 January 2026, 12:47:23 PM (GMT+11:00)

Tags:



Plant: TD57 CAT D6T LGP Track
Dozer

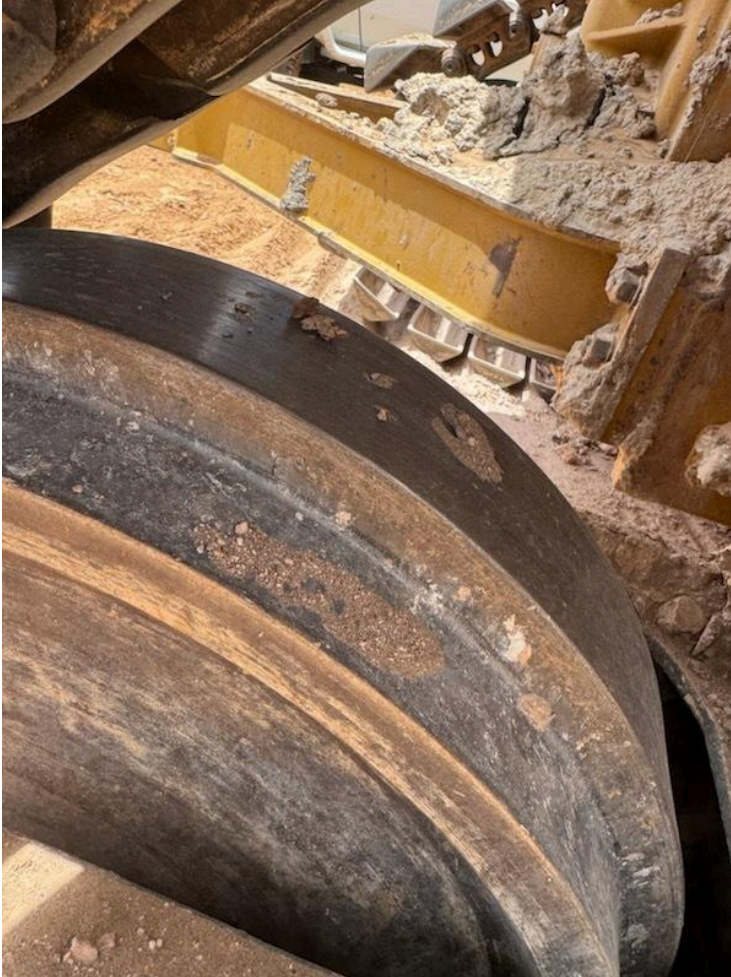
Zone: Zone All

Status: Submitted

Form Template: Dozer - 250
Hour Service (NEW)

Date Created: Tuesday, 20
January 2026, 9:45:11 AM
(GMT+11:00)

Photo (2)



Captured by: Candice Zoch

Captured on: Tuesday, 20 January 2026, 12:47:37 PM (GMT+11:00)

Tags:



Plant: TD57 CAT D6T LGP Track Dozer

Zone: Zone All

Status: Submitted

Form Template: Dozer - 250 Hour Service (NEW)

Date Created: Tuesday, 20 January 2026, 9:45:11 AM (GMT+11:00)

Photo (3)



Captured by: Candice Zoch

Captured on: Tuesday, 20 January 2026, 12:48:00 PM (GMT+11:00)

Tags:



Plant: TD57 CAT D6T LGP Track Dozer

Zone: Zone All

Status: Submitted

Form Template: Dozer - 250 Hour Service (NEW)

Date Created: Tuesday, 20 January 2026, 9:45:11 AM (GMT+11:00)

Photo (4)



Captured by: Candice Zoch

Captured on: Tuesday, 20 January 2026, 12:47:47 PM (GMT+11:00)

Tags:



Plant: TD57 CAT D6T LGP Track Dozer

Zone: Zone All

Status: Submitted

Form Template: Dozer - 250 Hour Service (NEW)

Date Created: Tuesday, 20 January 2026, 9:45:11 AM (GMT+11:00)

Photo (5)



Captured by: Candice Zoch

Captured on: Tuesday, 20 January 2026, 12:48:09 PM (GMT+11:00)

Tags:



Plant: TD57 CAT D6T LGP Track Dozer

Zone: Zone All

Status: Submitted

Form Template: Dozer - 250 Hour Service (NEW)

Date Created: Tuesday, 20 January 2026, 9:45:11 AM (GMT+11:00)

Photo (6)



Captured by: Candice Zoch

Captured on: Tuesday, 20 January 2026, 12:48:27 PM (GMT+11:00)

Tags:



Plant: TD57 CAT D6T LGP Track Dozer

Zone: Zone All

Status: Submitted

Form Template: Dozer - 250 Hour Service (NEW)

Date Created: Tuesday, 20 January 2026, 9:45:11 AM (GMT+11:00)

Photo (7)



Captured by: Candice Zoch

Captured on: Tuesday, 20 January 2026, 12:48:27 PM (GMT+11:00)

Tags:



Plant: TD57 CAT D6T LGP Track Dozer

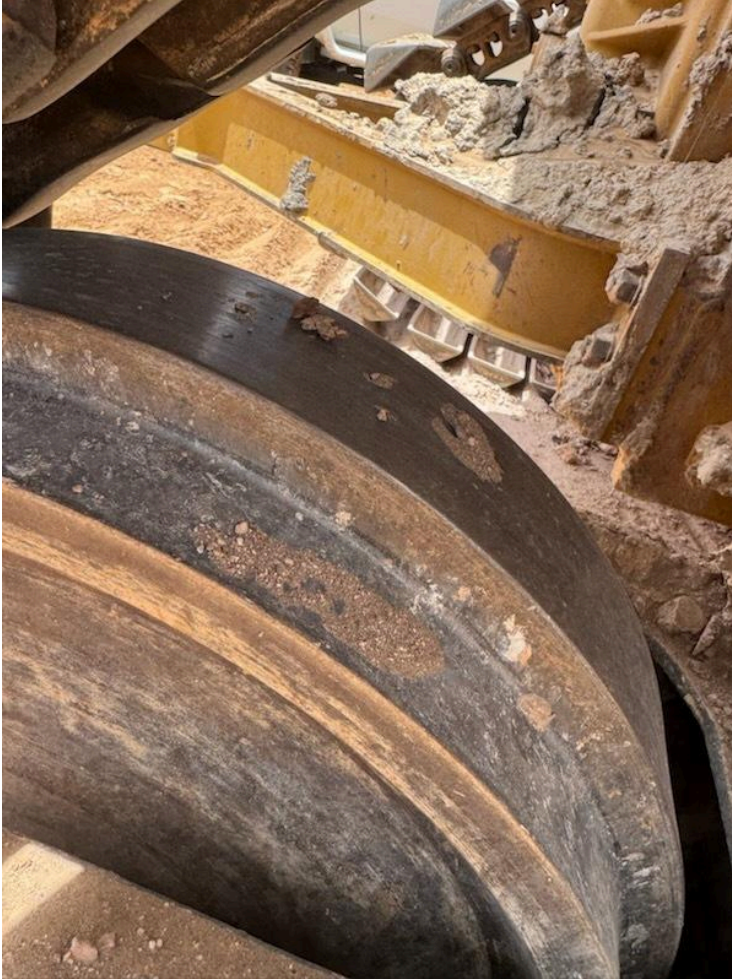
Zone: Zone All

Status: Submitted

Form Template: Dozer - 250 Hour Service (NEW)

Date Created: Tuesday, 20 January 2026, 9:45:11 AM (GMT+11:00)

Photo (8)



Captured by: Candice Zoch

Captured on: Tuesday, 20 January 2026, 12:48:40 PM (GMT+11:00)

Tags:

**Accident Prevention**

Read and understand safety warning in the operation and maintenance manual
 Have you completed a take 2?
 Have your job circumstances change since completing your take 2?

TD57 - D6 Dozer 500 Hour Service Sheet

Date:	22-4-25	Name:	Dyke		
Serial No:	SGZ00152	Service Type:	500 Hour	Machine Hours:	3423Hrs
<input checked="" type="checkbox"/>	Machine has been cleaned prior to commencement of service				
<input checked="" type="checkbox"/>	Machine has been positioned on flat level ground				
<input checked="" type="checkbox"/>	All implements have been lowered				
<input checked="" type="checkbox"/>	Machine has been isolated and locked out				

Compartment	Oil Type	Amount (Litres)
Engine	15W-40	24.5 Litres
Filter List	Qty	Part Numbers
Engine Oil Filter	1	1R-1808
Fuel Filter	2	1R-0749
Fuel Water Separator Filter	1	326-1644
Primary Engine Air Filter	1	577-1435
Cabin Air Filter	1	396-7087
Cabin Air Filter	1	6T-5068
Steering Charge Filter	1	465-6504
SOS Sample	5	SOS003
SOS Coolant Sample	1	SOS002

Note: The electronic copy of this document is controlled. To ensure that other copies of this document are current, check the revision number and date against the compliance management database, Qudos

Prepared By: Troy Slorach Date: 31/08/2020 Approved By: Troy Slorach Date: 31/08/2020
 Rev. No: 3 Date Implemented: 31/08/2020

500 HR LUBE SERVICE		INITIAL
SAMPLE:	Engine	JS.
	Transmission	JS.
	Coolant	JS.
	Final Drive	JS.
	Hydraulic Oil	JS.
	Transmission Oil	JS.
CHANGE:		
	Engine oil	JS.
	Engine oil filters	JS.
	Fuel filter	JS.
	Steering Charge Filter	JS.
	Cab air conditioner / heater filters	JS.
CLEAN:		
	Batteries and terminals	JS.
	Cab fresh air filter	JS.
	Engine air filter primary element	JS. <i>changed.</i>
	Engine air pre cleaner	JS. <i>changed.</i>
	Engine breathers	JS.
	Fuel cap, filter & strainer	JS.
	Condenser	JS.
	Drain fuel system water separator	JS.
	Drain fuel tank water & sediment	JS.
	Radiator	JS.
	Engine air filter secondary element	JS. <i>changed</i>
CHECK:		
	Hydraulic system oil level	JS.
	Transmission oil levels	JS.
	Final drive oil level	JS.
	Pivot shaft oil level	JS.
	Recoil spring compartment oil	JS.
	Equaliser bar end pin oil level & Inspect seals for wear	JS.
	Coolant level	JS.

Note: The electronic copy of this document is controlled. To ensure that other copies of this document are current, check the revision number and date against the compliance management database, Qudos

Prepared By: Troy Slorach Date: 31/08/2020 Approved By: Troy Slorach Date: 31/08/2020
 Rev. No: 3 Date Implemented: 31/08/2020

GREASE:		
	Fan bearings	JS
	Belt tensioner bearings	JS
	Universal joints	JS
	Fill auto grease system	NA

500 HR MECHANICAL SERVICE					
KEY:					
1. Machine is not safe , defect must be repaired					
2. Defect found and recorded, machine safe to operate					
3. Defect found and repaired					
4. OK					
5. Not applicable					
CHECK:	1	2	3	4	5
Condition and tension of fan, alternator & AC belts				/	
Universal joints for wear				/	
Air conditioner – condition and operation				/	
Operation of hydraulic controls				/	
Steering operation				/	
Undercarriage				/	
Service brake operation				/	
Park brake operation				/	
Equaliser bar pads				/	
Frame and attachments for cracks				/	
Fuel system for loose bolts and fittings				/	
Fuel line supply support clamps				/	
Hydraulic system for damaged lines and loose fittings				/	
All hoses for general condition and chaffing				/	
Cooling system hoses for condition and clamps for tightness				/	
Induction system for leaks and clamps for tightness				/	
Engine mounts				/	
Exhaust system for leaks, clamps and bolts for tightness				/	
Radiator for debris (wash if necessary)				/	
All points are receiving grease				/	
Battery cable				/	

Note: The electronic copy of this document is controlled. To ensure that other copies of this document are current, check the revision number and date against the compliance management database, Qudos

CHECK:	1	2	3	4	5
Fuses				/	
Operation of park brake interlock				/	
Fan hub and jockey pullet bearings for excessive movement				/	
Seat belt – retainers and operation				/	
Horns – air/electric				/	
Wipers				/	
Mirrors				/	
Seats – suspension adjustment/condition				/	
Doors				/	
Windows				/	
Gauges				/	
Grab rails				/	
Fire extinguishers – invert and shake to loosen powder				/	
Fire suppression bottle charge				/	/
Lights				/	
Reverse alarm				/	
Cab condition				/	
Audible alarm and warning lights				/	
Operation of emergency stop				/	
Engine shut down system				/	
Steps				/	
Nose cone pin & bush movement				/	
Equaliser bar pin movement				/	
Accumulation of fuel, oil, grease etc. that may cause fire hazard				/	
Fuel leaks				/	

Note: The electronic copy of this document is controlled. To ensure that other copies of this document are current, check the revision number and date against the compliance management database, Qudos

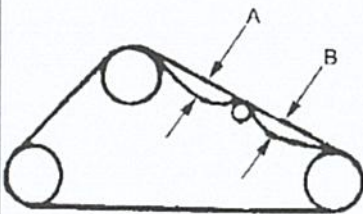
Prepared By: Troy Slorach Date: 31/08/2020 Approved By: Troy Slorach Date: 31/08/2020
 Rev. No: 3 Date Implemented: 31/08/2020

TRACK CHECK / ADJUST

LHS TRACK TENSION:		RHS TRACK TENSION	
ADJUSTMENT REQUIRED?	YES / NO	ADJUSTMENT REQUIRED?	YES / NO

Check adjustment:

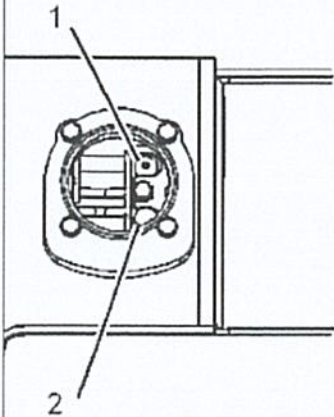
Move the machine forward. Allow the machine to coast to a stop without the use of the service brakes. Adjust the tracks while you are in the machine typical operating conditions. If packing conditions prevail on the workplace, the tracks should be adjusted without removing the packed material. To measure the sag in the track, stretch a string over the grouser that are between the sprocket and the front idler. Take the measurement from the string to the top of the grouser at the maximum measurement. Dimension (A) is the maximum distance between the string and the grouser.



The machine is equipped with a carrier roller. Calculate the average of dimension (A) and dimension (B). The correct average value is 55 ± 10 mm (2.2 ± 0.4 inch)

If machine requires loosening:

Remove the access cover, add multipurpose grease through track adjustment valve, add grease until the dimension (A,B) is correct, operate the machine back and forth in order to equalize the pressure. Allow the machine to coast to a complete stop. Do not use the brakes



If machine requires tightening:

Loosen relief valve (2) by one turn of 360 degrees and allow the grease to escape, close the relief valve. Tighten the valve to a torque of 34 ± 7 N·m (25 ± 5 lb ft) add grease through track adjustment valve (1). Add grease until dimension (A, B, C) is correct, Install the access cover

Average:

LHS same

RHS same

Note: The electronic copy of this document is controlled. To ensure that other copies of this document are current, check the revision number and date against the compliance management database, Qudos

Prepared By: Troy Slorach Date: 31/08/2020 Approved By: Troy Slorach Date: 31/08/2020
 Rev. No: 3 Date Implemented: 31/08/2020

TRACK ADJUSTMENT:					
1. Defect found and repaired	3. OK	1	2	3	4
2. Defect found and recorded; machine still OK	4. Not Applicable				
Track Adjustment				/	
Condition of Track Rollers				/	
Track Pins & Bushes				/	
Track Roller Bolts – loose or missing				/	
Track Frame condition Cannon chrome				/	
Canon - leaks				/	
Grouser bolts - tight visual check				/	
Sprocket segment bolts				/	
Carrier Roller & Bolts				/	
Idler bolts – missing or loose				/	
Front Idler Position				/	
Idler Condition LHF	Idler Condition RHF			/	/
Idler Condition LHR	Idler Condition RHR			/	/

CHECK:				
KEY:				
1. Machine is not safe , defect must be repaired				
2. Defect found and recorded, machine safe to operate				
3. Defect found and repaired				
4. OK				
5. Not applicable				
GET CONDITION	Initial Appropriate Column			
	1	2	3	4
Ripper Shank Protectors		NA		
Ripper Tips				
Blade Cutting Edges				/
Blade Corner tips LH				/
Blade Corner Tips RH				/

Note: The electronic copy of this document is controlled. To ensure that other copies of this document are current, check the revision number and date against the compliance management database, Qudos

Prepared By: Troy Slorach Date: 31/08/2020 Approved By: Troy Slorach Date: 31/08/2020
 Rev. No: 3 Date Implemented: 31/08/2020

Date	Work Description	Plant No	Work Type
09/09/24	Fit blade	TD57	MF - Maintenance Fitter
10/09/24	Fit blade	TD57	MF - Maintenance Fitter
12/09/24	Service	TD57	MF - Maintenance Fitter
13/09/24	Site prep	TD57	MF - Maintenance Fitter
26/09/24	Belly plate	TD57	MF - Maintenance Fitter
03/10/24	Inspect machine, top up oils, troubleshoot	TD57	MF - Maintenance Fitter
04/10/24	250hr service, repalce steer position sensor & cal	TD57	MF - Maintenance Fitter
04/10/24	Replaced corner tips, fix windscreen squirters	TD57	MF - Maintenance Fitter
07/10/24	change out PL antenna, and cable, adjust tracks &	TD57	MF - Maintenance Fitter
07/10/24	Remove exisiting stickers, clean cabin windows and	TD57	MF - Maintenance Fitter
07/10/24	Hook onto fuel trailer, TD57 and FL80, compressor&	TD57	MF - Maintenance Fitter
14/10/24	Refit panel, and checkover	TD57	MF - Maintenance Fitter
15/10/24	Fit handrail clamps	TD57	MF - Maintenance Fitter
31/10/24	Tilt hoses, blade sensor wiring	TD57	MF - Maintenance Fitter
03/12/24	machine check over	TD57	MF - Maintenance Fitter
10/12/24	remove damage draft arm step	TD57	MF - Maintenance Fitter
11/12/24	drill out snapped bolts on draft arm, check machin	TD57	MF - Maintenance Fitter
05/02/25	Adjust door latches & strickers	TD57	MF - Maintenance Fitter
17/04/25	Fill fuel, grease, clean air filters, complete ins	TD57	MF - Maintenance Fitter
22/04/25	500 hour service	TD57	MF - Maintenance Fitter
23/04/25	complete 500 hour service	TD57	MF - Maintenance Fitter
23/04/25	troubleshoot steering pressure sesnor fault, organ	TD57	MF - Maintenance Fitter
24/04/25	refit all guards & covers & belly plates	TD57	MF - Maintenance Fitter
30/04/25	Remove belly plate, remove hoses to gain access, r	TD57	MF - Maintenance Fitter
30/04/25	Change out remaining filters from 500 hr service	TD57	MF - Maintenance Fitter
01/05/25	Troubleshoot fault codes, replace steering pressur	TD57	MF - Maintenance Fitter
01/05/25	replace broken belly plate bolts. Replace hydraul	TD57	MF - Maintenance Fitter
01/05/25	fit belly plates, top up oils & fuel	TD57	MF - Maintenance Fitter
02/05/25	Remove panels, press & treat nose cone pin	TD57	MF - Maintenance Fitter
06/05/25	Check over machine & grease	TD57	MF - Maintenance Fitter
05/08/25	site prep	TD57	MF - Maintenance Fitter
25/11/25	low fuel pressure fault (CAT)	TD57	MF - Maintenance Fitter
08/12/25	DPF / aftertreatment issue (pump)	TD57	MF - Maintenance Fitter
08/12/25	DPF Fault	TD57	MF - Maintenance Fitter
	TD57 - Lift cylinder yoke has movement in bushes		
	TD57 - E-1052 (2) AFT Fuel Pressure Low		
	TD57 - Tangled up rope round tracks		
	TD57 CAT D6T LGP Track Dozer - Service Schedule Step 250 (110)		
	TD57 - TRACK GEAR WORN		
	TD57 - Tilt cylinder leaking		
	TD57 - Chain stretched and worn , sprocket u/s		