

Date	Work Description	Plant No	Task
28/09/22	Fitted UHF Hand Piece	SC36	RM - Repairs & Maintenance
17/02/23	Check over and replace cutting edges	SC36	RM - Repairs & Maintenance
27/02/23	Rear trans leak, drained replcd burnt oil c/o s/ff	SC36	RM - Repairs & Maintenance
17/08/23	Prepost inspection and repairs	SC36	RM - Repairs & Maintenance
11/09/23	load trailer, cutting edges & unload end of shift	SC36	WD - Workshop Duties
11/09/23	Rplc cutting edges, striger & flip routers	SC36	RM - Repairs & Maintenance
22/09/23	Load ute, cutting edges, stands etc	SC36	WD - Workshop Duties
22/09/23	Rpl edges, stinger, routers	SC36	RM - Repairs & Maintenance
10/10/23	Flip Edges	SC36	RM - Repairs & Maintenance
23/01/24	Unload truck hook up trailer to ute	SC36	RM - Repairs & Maintenance
24/01/24	Radio and dash cam/ sert form	SC36	RM - Repairs & Maintenance
25/01/24	Defects	SC36	RM - Repairs & Maintenance
29/01/24	Install areial	SC36	RM - Repairs & Maintenance
14/02/24	Repair 2 way radio, change GPS dome	SC36	RM - Repairs & Maintenance
19/02/24	Remove rear bail hook c/o	SC36	RM - Repairs & Maintenance
19/02/24	Recover and swap rhino hook+ step	SC36	RM - Repairs & Maintenance
20/02/24	Defects	SC36	RM - Repairs & Maintenance
28/02/24	revision on damage	SC36	RM - Repairs & Maintenance
29/02/24	Wash and run to front gate/ load onto truck	SC36	RM - Repairs & Maintenance
29/02/24	Load onto Truck	SC36	RM - Repairs & Maintenance
29/02/24	Pressure wash SC36	SC36	RM - Repairs & Maintenance
29/02/24	Wash Scraper	SC36	RM - Repairs & Maintenance
20/06/24	Air fitter plugged - fault	SC36	RM - Repairs & Maintenance
27/06/24	check hitch pressure, adjust hitch pressures to sp	SC36	RM - Repairs & Maintenance
18/07/24	SC36	SC36	RM - Repairs & Maintenance
26/07/24	C/O GLT	SC36	RM - Repairs & Maintenance
07/08/24	GPS MEASURE UP SC36	SC36	RM - Repairs & Maintenance
27/08/24	SC36 - CHECKED & ADJUSTED TYRE PSI	SC36	RM - Repairs & Maintenance
03/09/24	Check out seat, check tyres	SC36	RM - Repairs & Maintenance
16/09/24	UHF fault & dash cam defect	SC36	RM - Repairs & Maintenance
19/09/24	Broken fan belt	SC36	RM - Repairs & Maintenance
09/10/24	Service scraper	SC36	RM - Repairs & Maintenance
09/10/24	Service Scraper	SC36	RM - Repairs & Maintenance
09/10/24	Service scraper	SC36	RM - Repairs & Maintenance
09/10/24	Scraper service	SC36	RM - Repairs & Maintenance
09/10/24	Get replacements & repair	SC36	RM - Repairs & Maintenance
09/10/24	Scraper service	SC36	RM - Repairs & Maintenance
30/10/24	Apron pin come out - Keeper lost	SC36	RM - Repairs & Maintenance
30/10/24	Missing pin keep bottom apron cylinder	SC36	RM - Repairs & Maintenance
31/10/24	fit bush to apron cylinder	SC36	RM - Repairs & Maintenance
11/11/24	C/O Rear Engine belts	SC36	RM - Repairs & Maintenance
28/11/24	repair door handle	SC36	RM - Repairs & Maintenance
06/12/24	split fuel tank	SC36	RM - Repairs & Maintenance
07/12/24	remove fuel tank	SC36	RM - Repairs & Maintenance
19/12/24	Load Out	SC36	RM - Repairs & Maintenance
09/01/25	repairs to door seal	SC36	RM - Repairs & Maintenance
14/01/25	Inspecting engine noise	SC36	RM - Repairs & Maintenance
05/03/25	Fix door strut	SC36	RM - Repairs & Maintenance
06/03/25	Repair/patch steering column	SC36	RM - Repairs & Maintenance
14/03/25	250 hour service & replace GET	SC36	RM - Repairs & Maintenance
14/03/25	250 hour service	SC36	RM - Repairs & Maintenance
14/03/25	finish service & replace cutting edges	SC36	RM - Repairs & Maintenance
20/03/25	GET flip router	SC36	RM - Repairs & Maintenance
24/03/25	Apron Cylinder C/O	SC36	RM - Repairs & Maintenance
25/03/25	headlight repairs	SC36	RM - Repairs & Maintenance
25/03/25	Hitch fault	SC36	RM - Repairs & Maintenance
31/03/25	diagnose sc36 drop hydraulic and trans to correct	SC36	RM - Repairs & Maintenance
15/04/25	remove @ fit bail arm cylinder , remove and fit ap	SC36	RM - Repairs & Maintenance
15/04/25	C/O apron cylinder	SC36	RM - Repairs & Maintenance
14/05/25	UHF Fault	SC36	RM - Repairs & Maintenance
21/05/25	GPS Fault	SC36	RM - Repairs & Maintenance
27/05/25	Flip stinger shim hitch	SC36	RM - Repairs & Maintenance

27/05/25	flip stinger / shimed hitch	SC36	RM - Repairs & Maintenance
18/06/25	GPS fault	SC36	RM - Repairs & Maintenance
19/06/25	Replace dipstick, replace oil	SC36	RM - Repairs & Maintenance
19/06/25	UHF Repairs	SC36	RM - Repairs & Maintenance
19/06/25	Check over GPS	SC36	RM - Repairs & Maintenance
03/07/25	GPS fault	SC36	RM - Repairs & Maintenance
06/08/25	250 Hour service	SC36	RM - Repairs & Maintenance
06/08/25	250 hour service	SC36	RM - Repairs & Maintenance
26/08/25	fuel cap & clean machine	SC36	RM - Repairs & Maintenance
17/09/25	grease pot, inspect seat	SC36	RM - Repairs & Maintenance
17/09/25	seat fault	SC36	RM - Repairs & Maintenance
24/09/25	Diagnose seat - Suspension Fault	SC36	RM - Repairs & Maintenance
14/10/25	empty & replace grease pot	SC36	RM - Repairs & Maintenance
14/10/25	grease canister change over, clean area	SC36	RM - Repairs & Maintenance
15/10/25	check hitch pressures, check over	SC36	RM - Repairs & Maintenance
15/10/25	fill grease pod	SC36	RM - Repairs & Maintenance
	SC36 - Slope sensor needs fixing		
	SC36 - Dash cam not working 2 & 3		
	SC36 gear shift issues		
	SC36 - Gps body sensor keeps loosing connection		
	SC36 CAT 627K Scraper - Service Schedule Step 250 (338)		
	SC36 Jumps out of transmission lock when loading		
	SC36 - UHF handle broken		
	SC36 - Get c/o		
	SC36 - Hitch Hose Replacement (Part No. 380-2328) William Adams		
	Sc36 Camera needs formatting		
	SC36 - Rear camera not working just showing blue on screen		

Tyre and Rim Change							
Plant ID:	SC36	Site:	BALRANALD	Tyre Fitter:	DENNIS	Model:	627K
Tyre Size:	33.25R29	Hours:		Kilometres:		Date:	24/10/2024

Tyre – Rim Off										
POS	Serial No.	Tread In	Tread Out	Rim No.	Make	Type	Spec	Service Code***	Removal Reason Code**	Action Code*
1	S1N004199	43MM	50MM	N/A	BRIDGESTONE	V-STEEL	RADIAL	B	SCHD	D
2	S1N002800	41MM	49MM	N/A	BRIDGESTONE	V-STEEL	RADIAL	B	SCHD	D

Tyre – Rim On										
POS	New or Used	Serial No.	Tread In	Tread Out	Rim No.	Make	Type	Spec	Pressure	
1	NEW	S1R004150	NEW	NEW	N/A	BRIDGESTONE	V-STEEL	RADIAL	75 PSI	
2	NEW	S1R004151	NEW	NEW	N/A	BRIDGESTONE	V-STEEL	RADIAL	75 PSI	

	INITIAL
The area of the flanges which are in contact with the bead seat band or the rim base as well as any butt weld or any other form of weld in the flange shall be subject to visual inspection for wear, cracking, fretting, corrosion or damage	DG
The area of the rim base in contact with the flange, bead seat or lock ring shall be subject to visual inspection for wear, cracking, fretting, corrosion or damage	DG
Mounting holes in the wheel discs shall be checked for ovality and circumferential cracking	DG
The bead set band shall be visibly inspected for cracks, wear and corrosion in areas in contact with the lock ring, flange rim base or any weld	DG
The area across the inside surface of the rim base shall be visually inspected	DG
The lock ring shall be inspected for wear, corrosion, flat spots, ovality and warping. Lock rings with more than 20mm gap between ends shall be considered 'sprung' and therefore unsafe for use. If any defects in a lock ring is found, it shall be immediately cut in half to prevent further use	DG

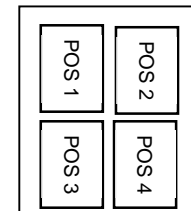
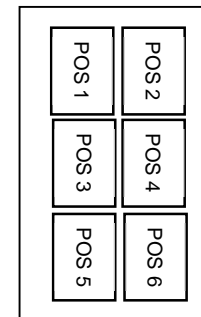
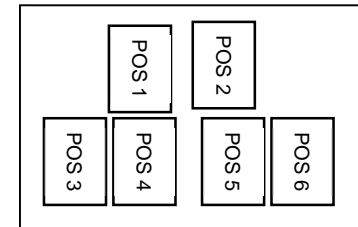
Note: The electronic copy of this document is controlled. To ensure that other copies of this document are current, check the revision number and date against the compliance management database, Qudos

Prepared By: Candice Zoch **Date:** 08/07/2024 **Approved By:** Daan Landkroon **Date:** 08/07/2024

Rev. No: 3 **Date Implemented:** 08/07/2024

*Action Code		**Removal Reason Code			
A	Scrap	TCUT	Tread Rock cut & Penetration	CSPE	Rock cut Separation
B	Repair	IRRW	Irregular wear, spot wear, rapid wear	PES	Ply turn up Separation
C	Further Inspection	CBU	Ply cord/casing break up	BDCK	Bead gum chaffer cracking
D	Return to mine site	SCUT	Sidewall/shoulder rock & penetration	CS	Ply cord separation
E	Transfer to another site	BEAD	Bead burst, chaffer end separation, rim friction	ILS	Inner liner split or blister
F	Transfer from Supplier	FO	Foreign Object	LOGP	Radial run out
G	Sold	ACCD	Fire, Chemical, rock ejector, loader bucket	LT	Low tread
H	Send for recap	SB	Shock burst, no evidence of rock cut	CB	Rock cut Burst
***Service Code		SCK	Buttress crack, radial crack at shoulder area	SCHD	Schedule Change
A	Tyre rotation	SWC	Sidewall crack	TSEP	Tread Separation
B	Vehicle Maintenance	RO	Run out	RF	Run flat
C	Due to rim problem	VIB	Pattern pitch vibration	SIDE	Sidewall separation
D	Due to tyre problem	BDFT	Improper fitment	HSEP	Heat separation
E	Due to air leak	NA	Not applicable	WO	Worn Out
F	Tyre fitment	WO	Worn Out	MATC	Matching
G	Other reason				

Tyre and Rim Positions:



Note: The electronic copy of this document is controlled. To ensure that other copies of this document are current, check the revision number and date against the compliance management database, Qudos

Prepared By:	Candice Zoch	Date:	08/07/2024	Approved By:	Daan Landkroon	Date:	08/07/2024
Rev. No:	3	Date Implemented:	08/07/2024				



Plant: SC36 CAT 627K Scraper

Zone: Zone All

Status: Submitted

Form Template: Scraper - 250 Hour Service (NEW)

Date Created: Wednesday, 18 February 2026, 6:14:27 AM (GMT+11:00)

Scraper - 250 Hour Service (NEW) - 5

Accident Prevention

Read and understand safety warning in the operation and maintenance manual	Yes
Have you completed a Take 2?	Yes
Have your job circumstances changed since completing your Take 2?	Yes

Initial Setup / Pre-Service Checks

Machine has been cleaned prior to commencement of service	Yes
Machine has been positioned on flat level ground	Yes
All implements have been lowered	Yes
Machine has been isolated and locked out	Yes

SAMPLE

Sample: Engine oil	Pass
Sample: Transmission oil	Pass
Sample: Hydraulic oil	Pass

Clean Tasks

Clean/inspect primary air filter	Pass
----------------------------------	------



Plant: SC36 CAT 627K Scraper

Zone: Zone All

Status: Submitted

Form Template: Scraper - 250 Hour Service (NEW)

Date Created: Wednesday, 18 February 2026, 6:14:27 AM (GMT+11:00)

Clean engine air pre-cleaner	Pass
Clean fuel cap filter, strainer, and tank breather	Pass
Clean radiator and A/C condenser	Pass
Clean air conditioner evaporator	Pass
Clean batteries, terminals, and boxes	Pass

CHECK

Check hydraulic Oil level	Pass
Check transmission oil level	Pass
Check differential oil (front/rear)	Pass
Check final drive oil (P1-P4)	Pass
Check elevator speed reducer oil (if applicable)	N/A
Check brake cooling oil (if applicable)	Pass
Check coolant level	Pass

GREASE

Grease drive shaft splines (hand gun only)	N/A
Grease belt tensioner bearings (Not Mine Grease)	N/A
Fill auto/bulk grease tank	Pass



Plant: SC36 CAT 627K Scraper

Zone: Zone All

Status: Submitted

Form Template: Scraper - 250
Hour Service (NEW)

Date Created: Wednesday, 18
February 2026, 6:14:27 AM
(GMT+11:00)

Grease ejector floor rollers	Pass
Grease elevator chain idler and adjustment cylinder	N/A
Grease brake camshaft or S cams	N/A
Grease fan hub and jockey pulley (hand gun only) (Not Mine Grease)	N/A

MECHANICAL CHECKS

Air conditioner – condition and operation	Pass
Engine water pump	Pass
Steering (cylinders, valve and joints)	Pass
Induction system for leaks and clamp tightness	Pass
All hoses – condition and chafing	Pass
Fuel system – loose bolts and fittings	Pass
Fuel line pipe support clamps	Pass
Hydraulic system – damaged lines or loose fittings	Pass
Engine mounts	Pass
Transmission and differential mount bolts	Pass
Pump and steering mounts	Pass
Universal joints and trunion bearings	Pass



Plant: SC36 CAT 627K Scraper

Zone: Zone All

Status: Submitted

Form Template: Scraper - 250
Hour Service (NEW)

Date Created: Wednesday, 18
February 2026, 6:14:27 AM
(GMT+11:00)

All panels and guards	Pass
Exhaust system – check for leaks	Pass
Frame – check for cracks	Pass
Cutting edges	Pass
Retarder lever free play	N/A
Brake linings – remove covers and inspect	N/A
Fan and jockey pulley bearings	Pass
Belt condition and tension	Pass
Radiator debris (clean if necessary)	Pass
Hydraulic cooler core	Pass
Cooling hoses and clamps	Pass
Battery clamps and cables	Pass
Voltage check	Pass
Ejector rollers / elevator chain	Pass
Grease points confirmed active	Pass

TYRE PRESSURES

POS 1 Actual:	65
POS 1 Adjusted:	65
POS 2 Actual:	65
POS 2 Adjusted:	65
POS 3 Actual:	65
POS 3 Adjusted:	65
POS 4 Actual:	65



Plant: SC36 CAT 627K Scraper

Zone: Zone All

Status: Submitted

Form Template: Scraper - 250
Hour Service (NEW)

Date Created: Wednesday, 18
February 2026, 6:14:27 AM
(GMT+11:00)

POS 4 Adjusted:	65
-----------------	----

Magnetic Plug Conditions

RHF:	
LHF:	
RHR:	
LHR:	

SAFETY CHECKS

Service brake stall test	Pass
Emergency brake	Pass
Park brake	Pass
Retarder function	N/A
Steering function	Pass
Seat condition & adjustment	Pass
Seat belt operation	Pass
Door & window operation	Pass
Mirror condition	Pass
Horns (air & electric)	Pass
Wipers & washer bottle	Pass
Gauges & warning lights	Pass
Reverse alarm / E-stop	Pass
Radio function	Pass
Grab rails and steps	Pass
Fire extinguisher (check date)	Pass
Fire suppression bottle	N/A
Tyres & wheel nuts	Pass



Plant: SC36 CAT 627K Scraper

Zone: Zone All

Status: Submitted

Form Template: Scraper - 250
Hour Service (NEW)

Date Created: Wednesday, 18
February 2026, 6:14:27 AM
(GMT+11:00)

Fuel leaks / pin retainers	Pass
Remove fuel/oil/grease buildup	Pass

Service Completion Sign-Off

Service Completed by:	Dennis Geboers
-----------------------	----------------

2500 SERVICE HOUR MAINTENANCE PERFORM (2500 HOURS INTERVAL)

PM Checklist

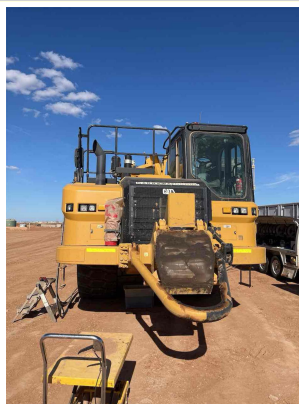
● 0 ● 0 ● 8 ● 0

Inspection Number	22629546	Customer No	2969503646
Serial Number	WTN00137	Customer Name	GARRAWAY GROUP
Make	CATERPILLAR	Work Order	EW15602
Model	627K	Completed On	14/05/2025 11:23:14 AM
Equipment Family	Wheel Tractor Scraper	Inspector	Luke King
Asset ID	SC36	PDF Generated On	14/05/2025
SMU	2491 Hours	Location	Balranald, Australia 2715
Coordinates	0, 0, 0		
Technician			

General Info & Comments

● General info/Comments

NORMAL



2500 SERVICE HOUR MAINTENANCE PERFORM (2500 HOURS INTERVAL)

● 1.1 INSPECT UNIT INJECTOR ELECTRONIC CONTROL

NORMAL

Job : 040
Modifier : EK2
Quantity :
WorkApp :
JobLocation : TRE
JobCond :
CabType :

● **1.2 INSPECT UNIT INJECTOR ELECTRONIC CONTROL**

NORMAL

Job : 040
Modifier : EK2
Quantity :
WorkApp :
JobLocation : SCE
JobCond :
CabType :

● **1.3 CHECK ENGINE SHUTOFF VALVE**

NORMAL

Job : 535
Modifier : VL
Quantity :
WorkApp :
JobLocation : TRE
JobCond :
CabType :

● **1.4 CHECK ENGINE SHUTOFF VALVE**

NORMAL

Job : 535
Modifier : VL
Quantity :
WorkApp :
JobLocation : SCE
JobCond :
CabType :

● **1.5 CHECK INLET/EXHAUST VALVE**

NORMAL

Job : 535
Modifier :
Quantity :
WorkApp :
JobLocation : TRE
JobCond :
CabType :
Part Number : 2295711
Part Quantity : 1.0

● **1.6 CHECK INLET/EXHAUST VALVE**

NORMAL

Job : 535
Modifier :
Quantity :
WorkApp :
JobLocation : SCE
JobCond :
CabType :
Part Number : 2600113
Part Quantity : 1.0

● **1.7 PERFORM 2500 SERVICE HOUR MAINTENANCE**

NORMAL

Job : 540
Modifier :
Quantity :
WorkApp :
JobLocation :
JobCond :
CabType :

PM 3 PERFORM (1000 HOURS INTERVAL)

PM Checklist

● 0 ● 0 ● 50 ● 0

Inspection Number	24797737	Customer No	2969503646
Serial Number	WTN00137	Customer Name	GARRAWAY GROUP
Make	CATERPILLAR	Work Order	EW15845
Model	627KLRC	Completed On	16/09/2025 5:53:28 PM
Equipment Family	Wheel Tractor Scraper	Inspector	Luke King
Asset ID	SC36	PDF Generated On	23/09/2025
SMU	2975 Hours	Location	Balranald, Australia 2715
Coordinates	0, 0, 0		
Technician			

General Info & Comments

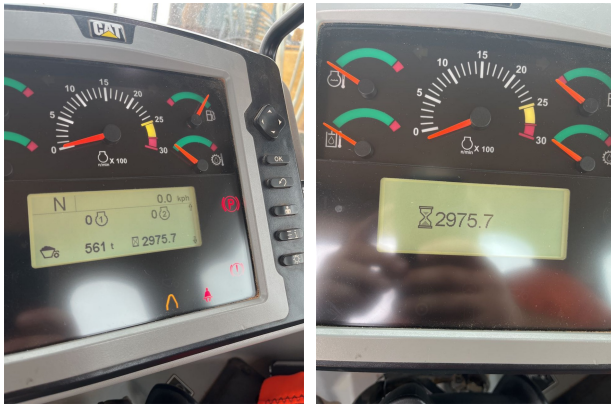
● General info/Comments

NORMAL



Image Comment(s):Low hyd oil





PM 3 PERFORM (1000 HOURS INTERVAL)

● 1.1 CLEAN TORQUE CONVERTER/TRANSMISSION SCAVENGE PUMP SCREEN NORMAL

Job : 070
Modifier : Z3
Quantity :
WorkApp :
JobLocation : TRE
JobCond :
CabType :

● 1.2 TEST SERVICE BRAKE NORMAL

Job : 081
Modifier :
Quantity :
WorkApp :
JobLocation :
JobCond :
CabType :

● 1.3 TEST PARKING BRAKE NORMAL

Job : 081
Modifier :
Quantity :
WorkApp :
JobLocation :
JobCond :
CabType :

● 1.4 TAKE & ANALYZE SOS SAMPLE FROM ENGINE OIL NORMAL

Job : 008
Modifier :
Quantity :
WorkApp :

JobLocation : TRE
JobCond :
CabType :
Part Number : SOS
Part Quantity : 1.0

● **1.5 TAKE & ANALYZE SOS SAMPLE FROM ENGINE OIL**

NORMAL

Job : 008
Modifier :
Quantity :
WorkApp :
JobLocation : SCE
JobCond :
CabType :
Part Number : SOS
Part Quantity : 1.0

● **1.6 TAKE & ANALYZE SOS SAMPLE FROM HYDRAULIC OIL**

NORMAL

Job : 008
Modifier :
Quantity :
WorkApp :
JobLocation :
JobCond :
CabType :
Part Number : SOS
Part Quantity : 1.0

● **1.7 TAKE & ANALYZE SOS SAMPLE FROM TRANSMISSION OIL**

NORMAL

Job : 008
Modifier :
Quantity :
WorkApp :
JobLocation : TRE
JobCond :
CabType :
Part Number : SOS
Part Quantity : 1.0

● **1.8 TAKE & ANALYZE SOS SAMPLE FROM TRANSMISSION OIL**

NORMAL

Job : 008
Modifier :
Quantity :
WorkApp :
JobLocation : SCE

JobCond :
CabType :
Part Number : SOS
Part Quantity : 1.0

● **1.9 CHECK BRAKE ACCUMULATOR** *NORMAL*

Job : 535
Modifier :
Quantity :
WorkApp :
JobLocation :
JobCond :
CabType :

● **1.10 CHECK CUSHION HITCH ACCUMULATOR** *NORMAL*

Job : 535
Modifier : ZJ
Quantity :
WorkApp :
JobLocation :
JobCond :
CabType :

● **1.11 CLEAN BATTERY** *NORMAL*

Job : 070
Modifier :
Quantity :
WorkApp :
JobLocation :
JobCond :
CabType :

● **1.12 INSPECT SERPENTINE BELT** *NORMAL*

Job : 040
Modifier :
Quantity :
WorkApp :
JobLocation : SCE
JobCond :
CabType :
Part Number : 3570493
Part Quantity : 1.0

● **1.13 INSPECT SERPENTINE BELT** *NORMAL*

Job : 040
Modifier :
Quantity :
WorkApp :
JobLocation : TRE
JobCond :
CabType :
Part Number : 5197379
Part Quantity : 1.0

● **1.14 TAKE & ANALYZE SOS SAMPLE FROM BRAKE OIL** *NORMAL*

Job : 008
Modifier :
Quantity :
WorkApp :
JobLocation : SCE
JobCond :
CabType :
Part Number : SOS
Part Quantity : 1.0

● **1.15 TAKE & ANALYZE SOS SAMPLE FROM DRIVE AXLE OIL** *NORMAL*

Job : 008
Modifier : OC
Quantity :
WorkApp :
JobLocation : TRE
JobCond :
CabType :
Part Number : SOS
Part Quantity : 1.0

● **1.16 TAKE & ANALYZE SOS SAMPLE FROM DRIVE AXLE OIL** *NORMAL*

Job : 008
Modifier : OC
Quantity :
WorkApp :
JobLocation : SCE
JobCond :
CabType :
Part Number : SOS
Part Quantity : 1.0

● **1.17 TAKE & ANALYZE SOS SAMPLE FROM FINAL DRIVE OIL** *NORMAL*

Job : 008

Modifier : OC
Quantity :
WorkApp :
JobLocation : TRE
JobCond :
CabType :
Part Number : SOS
Part Quantity : 2.0

● **1.18 TAKE & ANALYZE SOS SAMPLE FROM FINAL DRIVE OIL**

NORMAL

Job : 008
Modifier : OC
Quantity :
WorkApp :
JobLocation : SCE
JobCond :
CabType :
Part Number : SOS
Part Quantity : 2.0

● **1.19 CHECK EJECTOR CARRIER ROLLER**

NORMAL

Job : 535
Modifier :
Quantity :
WorkApp :
JobLocation :
JobCond :
CabType :

● **1.20 CHECK EJECTOR GUIDE ROLLER**

NORMAL

Job : 535
Modifier :
Quantity :
WorkApp :
JobLocation :
JobCond :
CabType :

● **1.21 CHECK EJECTOR SUPPORT ROLLER**

NORMAL

Job : 535
Modifier :
Quantity :
WorkApp :
JobLocation :
JobCond :
CabType :

● **1.22 REPLACE WITH NEW ENGINE OIL & FILTER**

NORMAL

Job : 511
Modifier :
Quantity :
WorkApp :
JobLocation : TRE
JobCond :
CabType :
Part Number : DEO-ULS
Part Quantity : 9.7743705437

● **1.23 REPLACE WITH NEW ENGINE OIL & FILTER**

NORMAL

Job : 511
Modifier :
Quantity :
WorkApp :
JobLocation : SCE
JobCond :
CabType :
Part Number : 1R1808
Part Quantity : 1.0

● **1.24 REPLACE WITH NEW PRIMARY FUEL FILTER ELEMENT**

NORMAL

Job : 511
Modifier : FQ
Quantity :
WorkApp :
JobLocation : TRE
JobCond :
CabType :
Part Number : 3261643
Part Quantity : 1.0

● **1.25 REPLACE WITH NEW PRIMARY FUEL FILTER ELEMENT**

NORMAL

Job : 511
Modifier : FQ
Quantity :
WorkApp :
JobLocation : SCE
JobCond :
CabType :
Part Number : 4385386
Part Quantity : 1.0

● **1.26 REPLACE WITH NEW SECONDARY FUEL FILTER ELEMENT**

NORMAL

Job : 511
Modifier : FQ
Quantity :
WorkApp :
JobLocation : TRE
JobCond :
CabType :
Part Number : 1R0749
Part Quantity : 2.0

● **1.27 REPLACE WITH NEW SECONDARY FUEL FILTER ELEMENT**

NORMAL

Job : 511
Modifier : FQ
Quantity :
WorkApp :
JobLocation : SCE
JobCond :
CabType :
Part Number : 1R0749
Part Quantity : 2.0

● **1.28 CLEAN FUEL TANK CAP(S)**

NORMAL

Job : 070
Modifier : Z2
Quantity :
WorkApp :
JobLocation :
JobCond :
CabType :

● **1.29 CLEAN FUEL TANK STRAINER**

NORMAL

Job : 070
Modifier : STR
Quantity :
WorkApp :
JobLocation :
JobCond :
CabType :

● **1.30 REPLACE WITH NEW HYDRAULIC OIL FILTER ELEMENT**

NORMAL

Job : 511
Modifier : FQ
Quantity :

WorkApp :
JobLocation :
JobCond :
CabType :
Part Number : 5H6733
Part Quantity : 1.0

● **1.31 REPLACE WITH NEW HYDRAULIC OIL FILTER RETURN** *NORMAL*

Job : 511
Modifier : RJ
Quantity :
WorkApp :
JobLocation :
JobCond :
CabType :
Part Number : 4363443
Part Quantity : 1.0

● **1.32 REPLACE WITH NEW HYDRAULIC OIL FILTER HITCH** *NORMAL*

Job : 511
Modifier : HCH
Quantity :
WorkApp :
JobLocation :
JobCond :
CabType :
Part Number : 4363443
Part Quantity : 1.0

● **1.33 REPLACE WITH NEW TRANSMISSION OIL FILTER ELEMENT** *NORMAL*

Job : 511
Modifier : FQ
Quantity :
WorkApp :
JobLocation : TRE
JobCond :
CabType :
Part Number : 5715253
Part Quantity : 1.0

● **1.34 REPLACE WITH NEW TRANSMISSION OIL FILTER ELEMENT** *NORMAL*

Job : 511
Modifier : FQ
Quantity :
WorkApp :
JobLocation : SCE

JobCond :
CabType :
Part Number : 3434464
Part Quantity : 1.0

● **1.35 CLEAN TRANSMISSION MAGNETIC SCREEN** *NORMAL*

Job : 070
Modifier : MGS
Quantity :
WorkApp :
JobLocation : TRE
JobCond :
CabType :

● **1.36 CLEAN TRANSMISSION MAGNETIC SCREEN** *NORMAL*

Job : 070
Modifier : MGS
Quantity :
WorkApp :
JobLocation : SCE
JobCond :
CabType :

● **1.37 REPLACE WITH NEW BRAKE/AXLE OIL COOLER BREATHER** *NORMAL*

Job : 511
Modifier : BRE
Quantity :
WorkApp :
JobLocation : SCE
JobCond :
CabType :
Part Number : 4194904
Part Quantity : 1.0

● **1.38 REPLACE WITH NEW DRIVE AXLE BREATHER** *NORMAL*

Job : 511
Modifier : BRE
Quantity :
WorkApp :
JobLocation : TRE
JobCond :
CabType :
Part Number : 2582829
Part Quantity : 1.0

● **1.39 REPLACE WITH NEW DRIVE AXLE BREATHER**

NORMAL

Job : 511
Modifier : BRE
Quantity :
WorkApp :
JobLocation : SCE
JobCond :
CabType :
Part Number : 2582829
Part Quantity : 1.0

● **1.40 REPLACE WITH NEW FUEL TANK BREATHER**

NORMAL

Job : 511
Modifier : BRE
Quantity :
WorkApp :
JobLocation :
JobCond :
CabType :
Part Number : 3567423
Part Quantity : 1.0

● **1.41 REPLACE WITH NEW TRANSMISSION BREATHER**

NORMAL

Job : 511
Modifier : BRE
Quantity :
WorkApp :
JobLocation : TRE
JobCond :
CabType :
Part Number : 2582829
Part Quantity : 1.0

● **1.42 REPLACE WITH NEW TRANSMISSION BREATHER**

NORMAL

Job : 511
Modifier : BRE
Quantity :
WorkApp :
JobLocation : SCE
JobCond :
CabType :
Part Number : 2582829
Part Quantity : 1.0

● **1.43 CLEAN REFRIGERANT CONDENSER**

NORMAL

Job : 070
Modifier :
Quantity :
WorkApp :
JobLocation :
JobCond :
CabType :

● **1.44 REPLACE WITH NEW HYDRAULIC TANK BREAKER RELIEF** *NORMAL*

Job : 511
Modifier : BRL
Quantity :
WorkApp :
JobLocation :
JobCond :
CabType :
Part Number : 5070643
Part Quantity : 1.0

● **1.45 INSPECT ROPS/FOPS CAB** *NORMAL*

Job : 040
Modifier :
Quantity :
WorkApp :
JobLocation :
JobCond :
CabType :

● **1.46 DRAIN / REFILL TRANSMISSION OIL** *NORMAL*

Job : 044
Modifier :
Quantity :
WorkApp :
JobLocation : TRE
JobCond :
CabType :
Part Number : TDTO
Part Quantity : 25.6247011552

● **1.47 DRAIN / REFILL TRANSMISSION OIL** *NORMAL*

Job : 044
Modifier :
Quantity :
WorkApp :
JobLocation : SCE

JobCond :
CabType :
Part Number : TDTO
Part Quantity : 12.944436666

● **1.48 CLEAN TORQUE CONVERTER/TRANSMISSION SCAVENGE PUMP SCREEN** *NORMAL*

Job : 070
Modifier : Z3
Quantity :
WorkApp :
JobLocation : SCE
JobCond :
CabType :

● **1.49 PERFORM PM 3** *NORMAL*

Job : 540
Modifier :
Quantity :
WorkApp :
JobLocation :
JobCond :
CabType :