



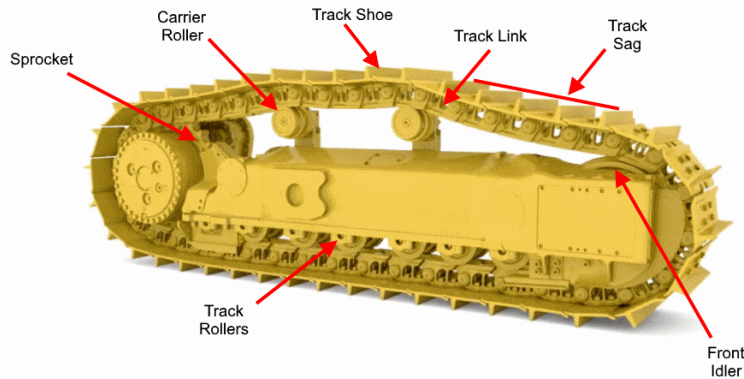
## Custom Track Service Simplified

**WILLIAM ADAMS**

**GARRAWAY GROUP**

Prepared By: Matthew Miller

<b>Model</b>	D7ELGP	<b>Job Site</b>	Douglas		<b>Inspection Date</b>	28Feb24
<b>Manufacturer</b>	Caterpillar		<u>Left</u>	<u>Right</u>	<b>Next Inspection Date</b>	--
<b>Serial Number</b>	SCG00129	<b>Track Sag (51.0 mm - 66.0 mm)</b>	--	--	<b>Next Inspection Hours</b>	--
<b>Reference Number</b>	TD43	<b>Frame Ext</b>	--	--	<b><u>Underfoot Conditions</u></b>	
<b>Hour Meter Reading</b>	7598	<b>Frame Ext %</b>	--	--	<b>Impact</b>	Moderate
<b>Hours Per Week</b>	10.5	<b>Dry Joints</b>	0	0	<b>Abrasion</b>	Low
<b>Total Odometer Reading</b>	--	<b>Link Roller System</b>	112%	119%	<b>Moisture</b>	Moderate
<b>Forward Odometer</b>	--				<b>Packing</b>	Moderate
<b>Reverse Odometer</b>	--				<b>Bushing Allowable Wear</b>	Greater
<b>Distance Per Week</b>	--				<b>Link Allowable Wear</b>	Greater



Component	Status		Part Number		Measurement (mm)		Percent Worn		
	Left	Right	Left	Right	Left	Right	Left	Right	
<b>Link Assemblies</b>	<b>Left: 3279305</b>		<b>Right: 3279305</b>		<b>Pitch: 8.5 in (215.9 mm)</b>		<b>Sections: 44</b>		
<b>Track Link</b>	Original	Original	619239	619239	29.5	30.0	100%	96%	
<b>Bushing (Ext)</b>	Original	Original	1154924	1154924	4.0	4.0	108%	108%	
<b>Track Shoe</b>	<b>Left Width: 915.0mm</b>				<b>Right Width: 915.0mm</b>				
	Original	Original	3261134	3261134	64.3	64.0	51%	52%	
<b>Idlers</b>									
<b>Front</b>	Original	Original	3518928	3518928	28.0	28.0	76%	76%	
<b>Carrier Roller</b>									
<b>Front</b>	Original	Original	3235925	3235925	49.6	32.9	17%	96%	
<b>2</b>	Original	Original	3235925	3235925	43.0	34.0	56%	92%	
<b>Track Roller</b>									
<b>Front</b>	S	Original	Original	3235925	3235925	30.0	30.9	108%	104%
<b>2</b>	D	Original	Original	3235928	3235928	30.0	31.1	108%	104%
<b>3</b>	S	Original	Original	3235925	3235925	30.0	31.1	108%	104%
<b>4</b>	D	Original	Original	3235928	3235928	30.0	31.1	108%	104%

5	D	Original	Original	3235928	3235928	30.0	31.1	108%	104%
6	S	Original	Original	3235925	3235925	26.0	27.6	124%	117%
7	D	Original	Original	3235928	3235928	29.5	27.5	110%	118%
8	S	Original	Original	3235925	3235925	27.0	21.4	120%	142%
<b>Sprocket</b>									
		Original	Original	3243327	3243327	--	--	--	--
CONDITION: Worn					CONDITION: Worn				

### General Recommendations

track links are over 100% worn. all new undercarriage required. left hand track has a cracked link and number 1 left front track roller has failed internally.

#### Photos

Pre-Inspect



Pre-Inspect

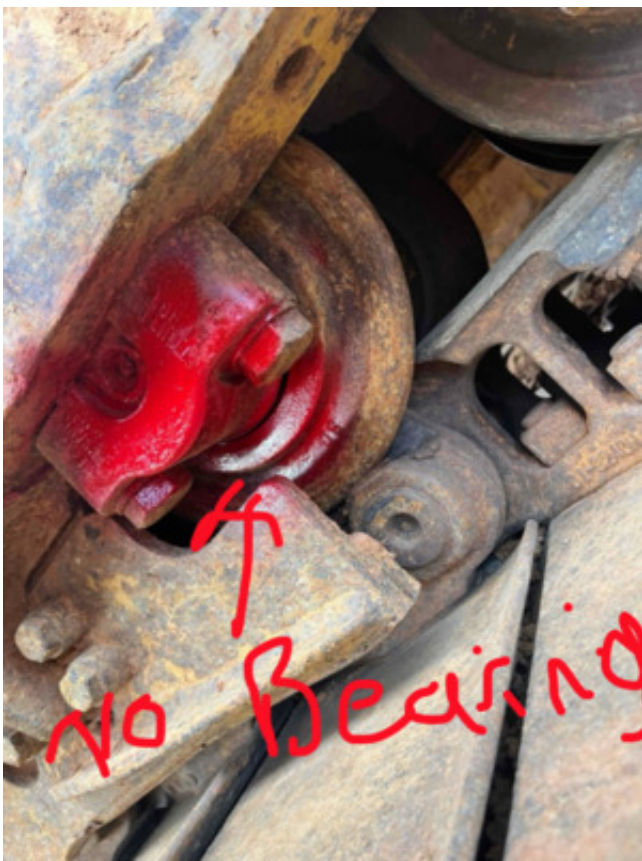


Pre-Inspect





Pre-Inspect



Pre-Inspect





Pre-Inspect



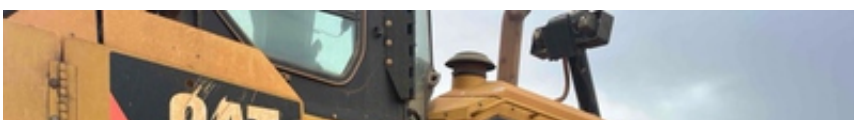
Pre-Inspect



Pre-Inspect



Pre-Inspect





Pre-Inspect



Pre-Inspect



Pre-Inspect



Date	Work Description	Plant No	Work Type
06/07/20	TD43 - check over & cert form	TD43	Plant Maintenance Labour
07/07/20	TD43 - blade repairs	TD43	Plant Maintenance Labour
16/07/20	TD43 - radio repairs	TD43	Plant Maintenance Labour
20/07/20	TD43 - install blade retainer pinon RH push arm	TD43	Plant Maintenance Labour
20/07/20	TD43 - draft arm pin	TD43	Plant Maintenance Labour
20/07/20	TD43 - AM/FM radio mount falling out & RHS draft	TD43	Plant Maintenance Labour
03/08/20	TD43 - draft arm pin	TD43	Plant Maintenance Labour
15/09/20	TD43 - service	TD43	Plant Maintenance Labour
15/09/20	TD43 - service	TD43	Plant Maintenance Labour
16/09/20	TD43 - service	TD43	Plant Maintenance Labour
16/09/20	TD43 - service, wash & tune up	TD43	Plant Maintenance Labour
17/09/20	TD43 - service & defects	TD43	Plant Maintenance Labour
17/09/20	TD43 - service & defects	TD43	Plant Maintenance Labour
28/09/20	TD43 - replace broken bolt in draft arm	TD43	Plant Maintenance Labour
05/11/20	TD43 - R&R dash screws	TD43	Plant Maintenance Labour
11/11/20	TD43 - fit ripper & tow hitch pins	TD43	Plant Maintenance Labour
12/11/20	TD43 - install missing roof hardware	TD43	Plant Maintenance Labour
03/12/20	TD43 - repair washers	TD43	Plant Maintenance Labour
17/12/20	TD43 - split trans tank	TD43	Plant Maintenance Labour
12/01/21	Track TD43 from workshop to TSF	TD43	Plant Maintenance Plant Movement
10/03/21	TD43 - RH track & idler repair	TD43	Plant Maintenance Labour
10/03/21	TD43 RH track slack & RH idler fork guide broken	TD43	Plant Maintenance Labour
18/03/21	TD43 - remove idlers & adjuster	TD43	Plant Maintenance Labour
18/03/21	TD43 - remove cannon adjuster & idlers	TD43	Plant Maintenance Labour
18/03/21	TD43 - remove idler & adjusters	TD43	Plant Maintenance Labour
22/03/21	TD43 - disassemble rollers & remove broken bolts	TD43	Plant Maintenance Labour
22/03/21	TD43 - pull down accumulator & rollers	TD43	Plant Maintenance Labour
22/03/21	TD43 - inspect & order parts	TD43	Plant Maintenance Labour
23/03/21	TD43 - undercarriage repairs	TD43	Plant Maintenance Labour
23/03/21	TD43 - undercarriage repairs & remove idler mounts	TD43	Plant Maintenance Labour
24/03/21	TD43 - fit caps to new rollers & undercarriage rep	TD43	Plant Maintenance Labour
24/03/21	TD43 - assemble idlers	TD43	Plant Maintenance Labour
25/03/21	TD43 - undercarriage repairs	TD43	Plant Maintenance Labour
25/03/21	TD43 - repairs	TD43	Plant Maintenance Labour
25/03/21	TD43 - undercarriage repairs	TD43	Plant Maintenance Labour
30/03/21	TD43 - track adjuster repairs	TD43	Plant Maintenance Labour
30/03/21	TD43 - undercarriage repairs	TD43	Plant Maintenance Labour
30/03/21	TD43 - track adjuster	TD43	Plant Maintenance Labour
31/03/21	TD43 - assemble track adjuster	TD43	Plant Maintenance Labour
31/03/21	TD43 - assemble track adjuster	TD43	Plant Maintenance Labour
31/03/21	TD43 - assemble	TD43	Plant Maintenance Labour
01/04/21	TD43 - install RH cannon, dlers & wrap tracks	TD43	Plant Maintenance Labour
01/04/21	TD43 - install RH track adjuster, idlers & join tr	TD43	Plant Maintenance Labour
01/04/21	TD43 idlers, tracks & adjusters	TD43	Plant Maintenance Labour
06/04/21	TD43 - fit router & guides & charge accumulator	TD43	Plant Maintenance Labour
06/04/21	TD43 - assist with repairs	TD43	Plant Maintenance Labour
27/04/21	TD43 - service, push arms & bearings	TD43	Plant Maintenance Labour
27/04/21	TD43 - blade repairs	TD43	Plant Maintenance Labour
27/04/21	TD43 - LH push arm repair	TD43	Plant Maintenance Labour
28/04/21	R&R cover & c/o radio	TD43	MF - Maintenance Fitter
28/04/21	Defects	TD43	MF - Maintenance Fitter
29/04/21	TD43 - load & paperwork	TD43	MC - Maintenance Co-Ordinator
03/06/21	Hydraulic Temp Fault	TD43	LMF - Labour Maintenance Fitter
07/06/21	Electrical fault	TD43	MF - Maintenance Fitter
06/08/21	Wash Machine	TD43	MF - Maintenance Fitter
09/08/21	Wash dozer for blade removal	TD43	MF - Maintenance Fitter
09/08/21	Dozer blade removal	TD43	MF - Maintenance Fitter
09/08/21	Wash Machine	TD43	MF - Maintenance Fitter
09/08/21	Wash Machine	TD43	MF - Maintenance Fitter
09/08/21	Remove Blade	TD43	MF - Maintenance Fitter
10/08/21	Load Machine and Blade on Float	TD43	MF - Maintenance Fitter
10/08/21	install blade	TD43	MC - Maintenance Co-Ordinator
10/08/21	broken bolts & fit blade	TD43	MF - Maintenance Fitter
11/08/21	bolt in pins & repairs	TD43	MF - Maintenance Fitter

11/08/21	blade, broken bolts in guards & check over	TD43	MF - Maintenance Fitter
04/11/21	tilt blade	TD43	MC - Maintenance Co-Ordinator
08/11/21	weed & seed	TD43	MF - Maintenance Fitter
08/11/21	flip cutting edges & lift machine for washing	TD43	MF - Maintenance Fitter
09/11/21	wash & load onto float	TD43	MF - Maintenance Fitter
09/11/21	unload & load float	TD43	MC - Maintenance Co-Ordinator
11/11/21	Set up blade, refit corner tips	TD43	MF - Maintenance Fitter
15/11/21	Finish off certification	TD43	MC - Maintenance Co-Ordinator
17/11/21	Adjust cab door catches	TD43	MC - Maintenance Co-Ordinator
12/01/22	C/O digital radio and antenna	TD43	MC - Maintenance Co-Ordinator
13/01/22	Draft arm repair	TD43	MF - Maintenance Fitter
25/01/22	500hr service	TD43	MF - Maintenance Fitter
25/01/22	Broken blade pivot	TD43	MF - Maintenance Fitter
25/01/22	Blade repair	TD43	MF - Maintenance Fitter
25/01/22	500hr service	TD43	MF - Maintenance Fitter
25/01/22	Blade secure	TD43	MC - Maintenance Co-Ordinator
25/01/22	500hr service	TD43	MC - Maintenance Co-Ordinator
31/01/22	TD43 Defects/ bracket for air filter	TD43	MF - Maintenance Fitter
31/01/22	Finish off service/ refit panels and guards	TD43	MF - Maintenance Fitter
31/01/22	Check track acculations and adjust tracks	TD43	MF - Maintenance Fitter
26/04/22	Check over blade and pin	TD43	MF - Maintenance Fitter
10/05/22	Remove Carry roller	TD43	MF - Maintenance Fitter
10/05/22	Carry Roller removal	TD43	MF - Maintenance Fitter
11/05/22	Fit new carrier roller	TD43	MF - Maintenance Fitter
11/05/22	Fit carry roller	TD43	MF - Maintenance Fitter
09/06/22	Change Segments	TD43	MF - Maintenance Fitter
09/06/22	Wash and clean tracks	TD43	MF - Maintenance Fitter
09/06/22	Track repairs	TD43	MF - Maintenance Fitter
09/06/22	Re wash tacks after coming into workshop	TD43	MC - Maintenance Co-Ordinator
09/06/22	Track repairs	TD43	MC - Maintenance Co-Ordinator
14/06/22	Tracks Repairs	TD43	MF - Maintenance Fitter
14/06/22	Track Repair	TD43	MF - Maintenance Fitter
14/06/22	Track Repairs	TD43	MF - Maintenance Fitter
15/06/22	Track adjustment	TD43	MF - Maintenance Fitter
16/06/22	Track fault	TD43	MF - Maintenance Fitter
20/06/22	LH track adjuster	TD43	MF - Maintenance Fitter
20/06/22	Cannon repair	TD43	MF - Maintenance Fitter
20/06/22	LHS Cannon repairs	TD43	MC - Maintenance Co-Ordinator
21/06/22	Slack adjuster repairs	TD43	MC - Maintenance Co-Ordinator
23/06/22	Clean & Prepare Slock Adj & Repair	TD43	LMF - Labour Maintenance Fitter
27/06/22	Dissamble Track Adjuster, Nitrogen Cylinder	TD43	LMF - Labour Maintenance Fitter
27/06/22	Disassemble Track Adjuster and Cylinder	TD43	MF - Maintenance Fitter
28/06/22	Clean parts for cannon	TD43	LMF - Labour Maintenance Fitter
28/06/22	Start Assembling Track Adjuster	TD43	LMF - Labour Maintenance Fitter
30/06/22	Clean & Tap out Threads. Buss Install Track	TD43	LMF - Labour Maintenance Fitter
30/06/22	Cannon Assembly	TD43	MC - Maintenance Co-Ordinator
01/07/22	Torque master link bolts, charge nitrogen, etc	TD43	MF - Maintenance Fitter
01/07/22	Tension tracks, charge and tension tracks	TD43	MC - Maintenance Co-Ordinator
19/07/22	Service and defects	TD43	MC - Maintenance Co-Ordinator
20/07/22	Service and defects	TD43	MC - Maintenance Co-Ordinator
20/07/22	Service and defects	TD43	MF - Maintenance Fitter
03/10/22	Fabrication Plates/ defects	TD43	MF - Maintenance Fitter
03/10/22	Assist- remove rear plate off fuel tank	TD43	MF - Maintenance Fitter
03/10/22	Remove rear panels- broken bolts/refit panels	TD43	MF - Maintenance Fitter
04/10/22	Inspect roof/ rear window for leak	TD43	MF - Maintenance Fitter
04/10/22	Rear window leak	TD43	MF - Maintenance Fitter
04/10/22	Inspect/ GET window leak	TD43	MC - Maintenance Co-Ordinator
06/10/22	Remove rear window and side covers- window removal	TD43	MF - Maintenance Fitter
06/10/22	C/O Belt and tensioner, prep lift cylinder for rem	TD43	MF - Maintenance Fitter
07/10/22	C/O Blade cylinder and Rear window	TD43	MF - Maintenance Fitter
07/10/22	Remove rear window/ refit new window	TD43	MF - Maintenance Fitter
07/10/22	C/O Blade cylinder	TD43	MC - Maintenance Co-Ordinator
07/10/22	Rear window, Blade lift cylinder, defects	TD43	MF - Maintenance Fitter
20/10/22	Inspect blade lift/ C/O	TD43	MF - Maintenance Fitter
21/10/22	Defects weld pin on blade	TD43	MF - Maintenance Fitter

21/10/22	Pin repair	TD43	MF - Maintenance Fitter
24/10/22	C/O Welds drop blade and Pin blade lift pin	TD43	MF - Maintenance Fitter
24/10/22	Weld Blade/ for dewatering	TD43	MF - Maintenance Fitter
25/10/22	C/O Release alarm	TD43	MF - Maintenance Fitter
07/11/22	1000hr service	TD43	MF - Maintenance Fitter
07/11/22	1000hr service	TD43	MF - Maintenance Fitter
07/11/22	GET/ Defects	TD43	MF - Maintenance Fitter
08/11/22	1000hr service	TD43	MF - Maintenance Fitter
08/11/22	Drop trans belly guard finish service/ defects	TD43	MF - Maintenance Fitter
08/11/22	Ordered Filters	TD43	MF - Maintenance Fitter
08/11/22	Drop Blade and fit new pivot and retainer/ refit	TD43	MF - Maintenance Fitter
08/11/22	Blade pin replacement	TD43	MF - Maintenance Fitter
10/11/22	Inspect machine/ order parts	TD43	MF - Maintenance Fitter
10/11/22	Drain Coolant, Remove water pump, disassemble	TD43	MF - Maintenance Fitter
10/11/22	Coolant leak	TD43	MF - Maintenance Fitter
11/11/22	Install water pump pulley, Guards, Hoses, Top up c	TD43	MF - Maintenance Fitter
09/02/23	Fit Fire extinguisher, bracket, engine belt	TD43	MF - Maintenance Fitter
22/02/23	AC service	TD43	MF - Maintenance Fitter
10/03/23	250hr service	TD43	MF - Maintenance Fitter
10/03/23	250hr service and defects	TD43	MF - Maintenance Fitter
14/03/23	Remove guards/ hosing	TD43	MF - Maintenance Fitter
14/03/23	Remove tilt cylinder disassemble and re seal RHS	TD43	MF - Maintenance Fitter
14/03/23	Finish off service	TD43	MF - Maintenance Fitter
14/03/23	Remove seized pins from blade tilt cylinder	TD43	MF - Maintenance Fitter
14/03/23	Dissassemble tilt cylinder	TD43	MF - Maintenance Fitter
15/03/23	Remove old bearings from rods and fit new strip RH	TD43	MF - Maintenance Fitter
16/03/23	Finish off LHS cyl / assemble RHS cylinder	TD43	MF - Maintenance Fitter
16/03/23	Fit left and right blade tilt cylinder	TD43	MF - Maintenance Fitter
20/03/23	Repair rear window washer/ fit housing, guard	TD43	MF - Maintenance Fitter
20/03/23	Fit hoses to tilt cylinder/ remove broken bolts	TD43	MF - Maintenance Fitter
21/03/23	Drill broken bolts out of mount for guard	TD43	MF - Maintenance Fitter
27/03/23	Make hoses for the tilt cyl LHS	TD43	MF - Maintenance Fitter
27/03/23	Remove guards and tilt cylinder, hoses on left sid	TD43	MF - Maintenance Fitter
27/03/23	Fit new tilt cylinder hoses and guards	TD43	MF - Maintenance Fitter
05/04/23	Inspection pin	TD43	MF - Maintenance Fitter
06/04/23	Remove pin from frame	TD43	MF - Maintenance Fitter
21/04/23	Travel to dozer chain up blade to get to Workshop	TD43	MF - Maintenance Fitter
21/04/23	Drop blade to fit new lift pin	TD43	MF - Maintenance Fitter
28/04/23	Fit new centre pin , refit blade	TD43	MF - Maintenance Fitter
28/04/23	Fit repaired pin to blade & push frame	TD43	MF - Maintenance Fitter
28/04/23	C/O rear liner-damaged refit old	TD43	MF - Maintenance Fitter
02/05/23	Assist in carrier roller removal	TD43	MF - Maintenance Fitter
02/05/23	Carry roller- remove	TD43	MF - Maintenance Fitter
03/05/23	Fit and tension track roller/ etc	TD43	MF - Maintenance Fitter
03/05/23	Fit new carry roller and tension tracks	TD43	MF - Maintenance Fitter
22/05/23	Remove blade, wash down C frame and clean up, pack	TD43	MF - Maintenance Fitter
22/05/23	Set up and remove blade and lift pins ready line	TD43	MF - Maintenance Fitter
24/05/23	Install Dozer blade	TD43	MF - Maintenance Fitter
24/05/23	Prep bores install pins/ install blade, reshim	TD43	MF - Maintenance Fitter
24/05/23	Fit blade	TD43	MF - Maintenance Fitter
04/07/23	Fix wiring in D&	TD43	MF - Maintenance Fitter
04/09/23	Wash and prepare for service	TD43	MF - Maintenance Fitter
04/09/23	Perform 500hr service	TD43	MF - Maintenance Fitter
05/09/23	Finish off service- final drives, mech checks	TD43	MF - Maintenance Fitter
02/11/23	AC Service	TD43	MF - Maintenance Fitter
06/12/23	Diagnose AC fault/ order parts	TD43	MF - Maintenance Fitter
11/12/23	AC repairs	TD43	MF - Maintenance Fitter
01/02/24	Broken blade pin	TD43	MC - Maintenance Co-Ordinator
01/02/24	Broken Blade pin	TD43	MC - Maintenance Co-Ordinator
01/02/24	Remove blade/ remove broken pin	TD43	MF - Maintenance Fitter
01/02/24	Recover from pit	TD43	MF - Maintenance Fitter
01/02/24	Recover from pit	TD43	MF - Maintenance Fitter
02/02/24	Blade installation	TD43	MF - Maintenance Fitter
13/03/24	Strip undercarriage	TD43	MF - Maintenance Fitter
13/03/24	Wash	TD43	MF - Maintenance Fitter

13/03/24	Undercarriage repairs	TD43	MC - Maintenance Co-Ordinator
14/03/24	Strip undercarriage	TD43	MF - Maintenance Fitter
14/03/24	Undercarriage repairs	TD43	MC - Maintenance Co-Ordinator
15/03/24	Strip undercarriage	TD43	MF - Maintenance Fitter
15/03/24	Project status report	TD43	MC - Maintenance Co-Ordinator
18/03/24	Strip undercarriage	TD43	MF - Maintenance Fitter
18/03/24	Undercarriage repairs	TD43	MC - Maintenance Co-Ordinator
19/03/24	Wire wheel bolts	TD43	MF - Maintenance Fitter
19/03/24	Undercarriage	TD43	MF - Maintenance Fitter
19/03/24	Undercarriage repairs	TD43	MC - Maintenance Co-Ordinator
20/03/24	Undercarriage	TD43	MF - Maintenance Fitter
20/03/24	Undercarriage repairs	TD43	MC - Maintenance Co-Ordinator
25/03/24	Inspection	TD43	MC - Maintenance Co-Ordinator
26/03/24	Fabricate side doorcracks/ paint	TD43	MF - Maintenance Fitter
26/03/24	Track rollers installation	TD43	MF - Maintenance Fitter
26/03/24	Undercarriage	TD43	MF - Maintenance Fitter
26/03/24	Undercarriage	TD43	MC - Maintenance Co-Ordinator
27/03/24	Segments and rollers	TD43	MF - Maintenance Fitter
27/03/24	Undercarriage repairs	TD43	MF - Maintenance Fitter
27/03/24	Undercarriage	TD43	MF - Maintenance Fitter
28/03/24	Track frames	TD43	MF - Maintenance Fitter
28/03/24	Undercarriage	TD43	MF - Maintenance Fitter
28/03/24	Undercarriage repairs	TD43	MC - Maintenance Co-Ordinator
02/04/24	Pick up chains/ rollers	TD43	MF - Maintenance Fitter
03/04/24	Track chains and plates	TD43	MF - Maintenance Fitter
03/04/24	grind tracks	TD43	MF - Maintenance Fitter
04/04/24	Grind tracks	TD43	MF - Maintenance Fitter
05/04/24	Track plates and chains	TD43	MF - Maintenance Fitter
05/04/24	Undercarriage	TD43	MF - Maintenance Fitter
08/04/24	Torque track bolts	TD43	MF - Maintenance Fitter
08/04/24	Undercarriage	TD43	MF - Maintenance Fitter
09/04/24	Torque bolts and tracks	TD43	MF - Maintenance Fitter
09/04/24	Undercarriage	TD43	MF - Maintenance Fitter
09/04/24	Undercarriage repairs	TD43	MC - Maintenance Co-Ordinator
10/04/24	Finish off track plates	TD43	MF - Maintenance Fitter
19/04/24	Assist WA with tracks	TD43	MC - Maintenance Co-Ordinator
22/04/24	Undercarriage repairs	TD43	MF - Maintenance Fitter
22/04/24	Undercarriage repairs	TD43	MF - Maintenance Fitter
23/04/24	Undercarriage	TD43	MF - Maintenance Fitter
23/04/24	Undercarriage	TD43	MF - Maintenance Fitter
23/04/24	Fit blade/ blade tilt hoses	TD43	MF - Maintenance Fitter
23/04/24	Refit tracks	TD43	MC - Maintenance Co-Ordinator
11/06/24	Inspect fault in drivers seat	TD43	MF - Maintenance Fitter
24/06/24	LH carrier roller, checkover	TD43	MF - Maintenance Fitter
25/06/24	Generator control module fault	TD43	MC - Maintenance Co-Ordinator
08/08/24	Perform 2000hr service	TD43	MF - Maintenance Fitter
08/08/24	250 hr service	TD43	MF - Maintenance Fitter
09/08/24	Movement checks, checkover	TD43	MF - Maintenance Fitter
25/10/24	Repair lights blowing fuses	TD43	MF - Maintenance Fitter
30/10/24	Diagnose a/c not blowing- order parts	TD43	MF - Maintenance Fitter
31/10/24	Replace AC blower fan	TD43	MF - Maintenance Fitter
01/11/24	Blade tilt hose/ order parts	TD43	MF - Maintenance Fitter
07/11/24	Change blade hose/ start	TD43	MF - Maintenance Fitter
08/11/24	Blade hoses replace	TD43	MF - Maintenance Fitter
15/11/24	Check over, cert forms- noise test	TD43	MF - Maintenance Fitter
21/11/24	ount bracket on rear	TD43	MF - Maintenance Fitter
16/01/25	2000hr service	TD43	MF - Maintenance Fitter
16/01/25	2000hr service	TD43	MF - Maintenance Fitter
16/01/25	2000hr service	TD43	MF - Maintenance Fitter
17/01/25	Perform tune up	TD43	MF - Maintenance Fitter
21/01/25	Power train hoses, order parts, clean belly guards	TD43	MF - Maintenance Fitter
21/01/25	Oil Leak	TD43	MF - Maintenance Fitter
22/01/25	Repair lights, refilled bolts for cab	TD43	MF - Maintenance Fitter
07/02/25	Inspect lift cylinder hoses and order parts	TD43	MF - Maintenance Fitter
10/02/25	Lift cylinder hoses	TD43	MF - Maintenance Fitter

10/02/25	Control valve block bolts, remove broken bolts	TD43	MF - Maintenance Fitter
11/02/25	Install control valveblock bolts, hoses etc	TD43	MF - Maintenance Fitter
06/03/25	Track to w/s, remove RH cover blade	TD43	MF - Maintenance Fitter
06/03/25	Remove broken top. Weld up, drill, grease	TD43	MF - Maintenance Fitter
11/03/25	Organise bushes to be made, buff arm bores	TD43	MF - Maintenance Fitter
11/03/25	Defects	TD43	MF - Maintenance Fitter
12/03/25	Clean up drawbar eye. Fit new bearings and clips	TD43	MF - Maintenance Fitter
12/03/25	Fit draw bar, grease blade and check over	TD43	MF - Maintenance Fitter
27/03/25	Defects, check over	TD43	MF - Maintenance Fitter
18/06/25	Work light fault	TD43	MF - Maintenance Fitter
20/06/25	Check over machine, G.E.T inspections	TD43	MF - Maintenance Fitter
27/08/25	Perform 250hr service, defects	TD43	MF - Maintenance Fitter
27/08/25	Service	TD43	MF - Maintenance Fitter
27/08/25	Find a short in light circuit	TD43	MF - Maintenance Fitter
03/09/25	Electrical fault	TD43	MF - Maintenance Fitter
03/09/25	Unseize pins to get to solenoids	TD43	MF - Maintenance Fitter
03/09/25	Repair elec fault and test- OK	TD43	MF - Maintenance Fitter
12/09/25	GET Inspections- Check over	TD43	MF - Maintenance Fitter
16/09/25	Pre start checks and inspection	TD43	MF - Maintenance Fitter
17/09/25	Dozer inspection	TD43	MF - Maintenance Fitter
18/09/25	Top up coolant	TD43	MF - Maintenance Fitter
07/10/25	Check over	TD43	MF - Maintenance Fitter
10/10/25	G.E.T inspection, top up coolant	TD43	MF - Maintenance Fitter
	TD43- Blade repairs		
	TD43- Replace blade pin		
	TD43- Wash and demobe		
	TD43- Remove blade for transport		

<b>Accident Prevention</b> Read and understand safety warning in the operation and maintenance manual Have you completed a take 2? Have your job circumstances change since completing your take 2?				
<b>D6 Dozer 250 Hour Service Sheet</b>				
<b>Date:</b>	27/8/25	<b>Name:</b>	Dion BPS	
<b>Plant ID:</b>	TD43	<b>Service Type:</b>	250 Hour	<b>Machine Hours:</b> 8228 HRS
<input checked="" type="checkbox"/>	Machine has been cleaned prior to commencement of service			
<input checked="" type="checkbox"/>	Machine has been positioned on flat level ground			
<input checked="" type="checkbox"/>	All implements have been lowered			
<input checked="" type="checkbox"/>	Machine has been isolated and locked out			

Compartment	Oil Type
Engine	15W-40
Transmission	30W
Hydraulics	10W
Radiator	Cat Extended Life Coolant
Final Drive P1	60W
Final Drive P2	60W
Equaliser	85W-140
Recoil	60W

*Note: The electronic copy of this document is controlled. To ensure that other copies of this document are current, check the revision number and date against the compliance management database, Qudos*

Prepared By: Troy Slorach      Date: 31/08/2020      Approved By: Troy Slorach      Date: 31/08/2020  
 Rev. No: 3      Date Implemented: 31/08/2020

250 HR LUBE SERVICE		INITIAL
<b>SAMPLE:</b>	Engine	Pur
	Transmission	Pur
<b>CHANGE:</b>		
	Engine oil	Pur
	Engine oil filters	Pur
	Fuel filter	Pur
	Cab air conditioner / heater filters	Pur
<b>CLEAN:</b>		
	Batteries and terminals	Pur
	Cab fresh air filter	Pur
	Engine air filter primary element	Pur
	Engine air pre cleaner	Pur
	Engine breathers	Pur
	Fuel cap, filter & strainer	Pur
	Condenser	Pur
<b>CHECK:</b>		
	Engine oil level	Pur
	Hydraulic system oil level	Pur
	Transmission oil levels	Pur
	Final drive oil level	Pur
	Pivot shaft oil level	Pur
	Recoil spring compartment oil	Pur
	Equaliser bar end pin oil level	Pur
	Equaliser bar end pin seals	Pur
	Equaliser bar pads	Pur
	Coolant level	Pur
	Engine air filter secondary element	Pur
	Drain fuel system water separator	Pur
	Drain fuel tank water & sediment	Pur
	Radiator	Pur
	Battery cable	Pur
	Battery electrolyte level	Pur
	Fuses	Pur
	Undercarriage	Pur

Note: The electronic copy of this document is controlled. To ensure that other copies of this document are current, check the revision number and date against the compliance management database, Qudos

Prepared By: Troy Slorach      Date: 31/08/2020      Approved By: Troy Slorach      Date: 31/08/2020  
 Rev. No: 3      Date Implemented: 31/08/2020

GREASE:			
	Fan bearings		pu
	Belt tensioner bearings		pu
	Universal joints		pu
	Fill auto grease system		pu

### 250HR MECHANICAL SERVICE

#### KEY:

1. Defect found and repaired
2. Defect found and recorded, machine still OK
3. OK
4. Not applicable

CHECK:	1	2	3	4
Condition and tension of fan, alternator & AC belts			✓	
Universal joints for wear			✓	
Air conditioner – condition and operation			✓	
Operation of hydraulic controls			✓	
Steering operation			✓	
Service brake operation			✓	
Park brake operation			✓	
Frame and attachments for cracks			✓	
Fuel system for loose bolts and fittings			✓	
Fuel line supply support clamps			✓	
Hydraulic system for damaged lines and loose fittings			✓	
All hoses for general condition and chaffing			✓	
Cooling system hoses for condition and clamps for tightness			✓	
Induction system for leaks and clamps for tightness			✓	
Engine mounts			✓	
Exhaust system for leaks, clamps and bolts for tightness			✓	
Radiator for debris (wash if necessary)			✓	
All points are receiving grease			✓	
Operation of park brake interlock			✓	
Fan hub and jockey pullet bearings for excessive movement			✓	
Seat belt – retainers and operation			✓	
Horns – air/electric			✓	

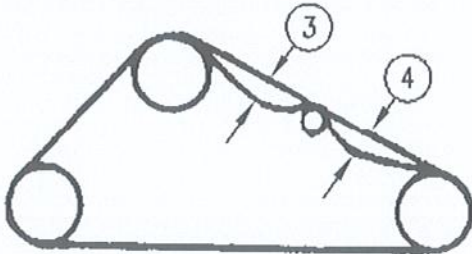
Note: The electronic copy of this document is controlled. To ensure that other copies of this document are current, check the revision number and date against the compliance management database, Qudos

Prepared By: Troy Slorach      Date: 31/08/2020      Approved By: Troy Slorach      Date: 31/08/2020  
 Rev. No: 3      Date Implemented: 31/08/2020

<b>CHECK:</b>	1	2	3	4
Wipers			✓	
Mirrors			✓	
Seats – suspension adjustment/condition			✓	
Doors			✓	
Windows			✓	
Gauges			✓	
Grab rails			✓	
Fire extinguishers – invert and shake to loosen powder			✓	
Fire suppression bottle charge			✓	
Lights			✓	
Reverse alarm			✓	
Cab condition			✓	
Audible alarm and warning lights			✓	
Operation of emergency stop			✓	
Engine shut down system			✓	
Steps			✓	
Nose cone pin & bush movement			✓	
Equaliser bar pin movement			✓	
Accumulation of fuel, oil, grease etc. that may cause fire hazard			✓	
Fuel leaks			✓	

<b>CHECK:</b>				
<b>KEY:</b>				
1. Defect found and repaired				
2. Defect found and recorded, machine still OK				
3. OK				
4. Not applicable				
<b>GET CONDITION</b>	Initial Appropriate Column			
	1	2	3	4
Ripper Shank Protectors				✓
Ripper Tips			✓	✓
Blade Cutting Edges			✓	
Blade Corner tips LH			✓	
Blade Corner Tips RH			✓	

*Note: The electronic copy of this document is controlled. To ensure that other copies of this document are current, check the revision number and date against the compliance management database, Qudos*

CHECK/ADJUST	Initial Appropriate Column			
	1	2	3	4
<p>Position machine by allowing a coast to stop            Note: If packing conditions are present in operational environment, adjust tracks in packed state.            Adjustment Limits Single carry roller 75±10mm sag at each location. The sum of dimension 3 &amp; 4 must be 155mm-10mm            (Position 3 &amp; 4)</p>				
				
<p>Note: If tracks require adjustment refer to work shop Manual for safety Instructions            LHS Adjustment _____mm    RHS Adjustment _____mm</p>				
Track Adjustment			✓	
Condition of Track Rollers			✓	
Track Pins & Bushes			✓	
Track Roller Bolts – loose or missing			✓	
Track Frame condition Cannon chrome			✓	
Canon - leaks			✓	
Grouser bolts - tight visual check			✓	
Sprocket segment bolts			✓	
Carrier Roller & Bolts			✓	
Idler bolts – missing or loose			✓	
Idler Condition LHF		Idler Condition RHF	✓	
Idler Condition LHR		Idler Condition RHR	✓	
Front Idler Position			✓	

*Note: The electronic copy of this document is controlled. To ensure that other copies of this document are current, check the revision number and date against the compliance management database, Qudos*

Prepared By: Troy Slorach    Date: 31/08/2020    Approved By: Troy Slorach    Date: 31/08/2020  
 Rev. No: 3    Date Implemented: 31/08/2020



**Accident Prevention**  
 Read and understand safety warning in the operation and maintenance manual  
 Have you completed a take 2?  
 Have your job circumstances change since completing your take 2?

**TD43 – D7E LGP Dozer 1000 Hour Service Sheet**

**Date:** 16/01/25      **Name:** Dion Roberts  
**Serial No:** SCG00129      **Service Type:** 1000 Hour 2000 HR Service      **Machine Hours:** 7984 HRS.

- Machine has been cleaned prior to commencement of service
- Machine has been positioned on flat level ground
- All implements have been lowered
- Machine has been isolated and locked out

Compartment	Oil Type	Amount (Litres)
Engine	15W-40	30 Litres
Transmission	30W	60 Litres
Filter List	Qty	Part Numbers
Engine Oil Filter	1	1R-1808
Fuel Filter	2	1R-0749
Fuel Water Separator Filter	1	326-1644
Primary Engine Air Filter	1	6I-0273
Cabin Air Filter	1	209-8217
Cabin Air Filter	1	121-2760
Hydraulic Oil Filter	2	1R-0777
Power Train Breather	2	9G-5127
SOS Sample	5	SOS003
Coolant Sample	1	SOS004

*Note: The electronic copy of this document is controlled. To ensure that other copies of this document are current, check the revision number and date against the compliance management database, Qudos*

**Prepared By:** Troy Slorach      **Date:** 31/08/2020      **Approved By:** Troy Slorach      **Date:** 31/08/2020  
**Rev. No:** 3      **Date Implemented:** 31/08/2020

1000 HR LUBE SERVICE		INITIAL
<b>SAMPLE:</b>	Engine	T.S.
	Power train	T.S.
	Final Drive P1	T.S.
	Final Drive P2	T.S.
	Hydraulics	T.S.
	Coolant	T.S.
<b>CHANGE:</b>		
	Engine oil	T.S.
	Engine oil filter	T.S.
	Fuel filter	T.S.
	Fuel/Water Separator	T.S.
	Cab air conditioner / heater filters	T.S.
	Hydraulic Oil Filter	T.S.
	Power train oil breathers	T.S.
	Window Wipers (If necessary)	T.S.
<b>CLEAN:</b>		
	Batteries and terminals	T.S.
	Cab fresh air filter	T.S.
	Engine air filter secondary element	T.S.
	Engine air pre cleaner	T.S.
	Engine breathers	T.S.
	Fuel cap, filter & strainer	T.S.
	Condenser	T.S.
	Drain fuel system water separator	T.S.
	Drain fuel tank water & sediment	T.S.
	Radiator	T.S.

Note: The electronic copy of this document is controlled. To ensure that other copies of this document are current, check the revision number and date against the compliance management database, Qudos

Prepared By: Troy Slorach      Date: 31/08/2020      Approved By: Troy Slorach      Date: 31/08/2020  
 Rev. No: 3      Date Implemented: 31/08/2020

CHECK:	
	Hydraulic system oil level <b>CHANGED</b>
	Power train oil level
	Final drive oil level
	Pivot shaft oil level
	Recoil spring compartment oil
	Equaliser bar end pin oil level & Inspect seals for wear
	Coolant level

GREASE:	
	Fan bearings
	Belt tensioner bearings
	Universal joints
	Fill auto grease system

**1000HR MECHANICAL SERVICE**

- KEY:**
- Machine is not safe**, defect must be repaired
  - Defect found and recorded, machine safe to operate
  - Defect found and repaired
  - OK
  - Not applicable

CHECK:	1	2	3	4	5
Condition and tension of fan, alternator & AC belts				✓	
Universal joints for wear				-	✓
Air conditioner – condition and operation				✓	
Operation of hydraulic controls				✓	
Steering operation				✓	
Undercarriage				✓	
Service brake operation				✓	
Park brake operation				✓	
Equaliser bar pads				✓	
Frame and attachments for cracks				✓	
Fuel system for loose bolts and fittings				✓	
Fuel line supply support clamps				✓	
Hydraulic system for damaged lines and loose fittings				✓	

*Note: The electronic copy of this document is controlled. To ensure that other copies of this document are current, check the revision number and date against the compliance management database, Qudos*

CHECK:	1	2	3	4	5
All hoses for general condition and chaffing				✓	
Cooling system hoses for condition and clamps for tightness				✓	
Induction system for leaks and clamps for tightness				✓	
Engine mounts				✓	
Exhaust system for leaks, clamps and bolts for tightness				✓	
Radiator for debris (wash if necessary)				✓	
All points are receiving grease				✓	
Battery cable				✓	
Operation of park brake interlock					✓
Fan hub and jockey pullet bearings for excessive movement				✓	
Seat belt – retainers and operation				✓	
Horns – air/electric				✓	
Wipers				✓	
Mirrors				✓	
Seats – suspension adjustment/condition				✓	
Doors				✓	
Windows				✓	
Gauges				✓	
Grab rails				✓	
Fire extinguishers – invert and shake to loosen powder					✓
Fire suppression bottle charge					
Lights			✓		
Reverse alarm				✓	
Cab condition				✓	
Audible alarm and warning lights				✓	
Operation of emergency stop				✓	
Engine shut down system				✓	
Steps				✓	
Nose cone pin & bush movement				✓	
Equaliser bar pin movement				✓	
Accumulation of fuel, oil, grease etc. that may cause fire hazard				✓	
Fuel leaks				✓	
Fuses				✓	

Note: The electronic copy of this document is controlled. To ensure that other copies of this document are current, check the revision number and date against the compliance management database, Qudos

Prepared By: Troy Slorach      Date: 31/08/2020      Approved By: Troy Slorach      Date: 31/08/2020  
 Rev. No: 3      Date Implemented: 31/08/2020

**TRACK CHECK / ADJUST**

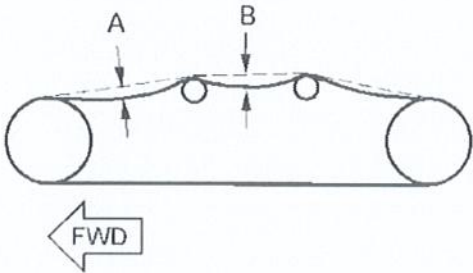
<b>LHS TRACK TENSION:</b>		<b>RHS TRACK TENSION</b>	
<b>ADJUSTMENT REQUIRED?</b>	YES / <b>NO</b>	<b>ADJUSTMENT REQUIRED?</b>	YES / <b>NO</b>

Check the track adjustment. Check for wear and for excessive dirt buildup.

If tracks are too tight, wear of the components will accelerate. If tracks are too loose, wear of the components will accelerate.

**Note:** Loss of Nitrogen (N<sup>2</sup>) charge in the recoil system may cause additional loosening of the track. This pressure may be retained inside the track roller frame. Take caution when removing the track adjust cover.

1. Move the machine forward for a distance of two times the length of the machine. Slowly reduce the machine to zero speed with the travel control pedal. Shut off the engine.
2. Stand on the track between the front idler and the track carrier roller in order to produce as much track sag as possible



D7E Track Sag (Range)		
Location	D7E	D7E LGP
Front (A)	35 mm (1.4 inch) to 45 mm (1.8 inch)	25 mm (1.0 inch) to 30 mm (1.2 inch)
Center (B)	15 mm (0.6 inch) to 20 mm (0.8 inch)	25 mm (1.0 inch) to 35 mm (1.4 inch)
Total (A + B)	50 mm (2.0 inch) to 65 mm (2.6 inch)	50 mm (2.0 inch) to 65 mm (2.6 inch)

3. Measure the track sag in two places on each track.
  - a. Place a tight string or a straight edge on top of the grousers between the carrier roller and front idler. Measure distance (A) from the straight edge to the grouser tip at the lowest point of sag.
  - b. Place a tight string or a straight edge on top of the grousers between the two carrier rollers. Measure distance (B) from the straight edge to the grouser tip at the lowest point of sag.
4. Total the two measurements. The total correct adjustment of the dimensions is 50 mm (2.0 inch) to 65 mm (2.60 inch).
5. Refer to Table 1 in order to determine the correct sag

*Note: The electronic copy of this document is controlled. To ensure that other copies of this document are current, check the revision number and date against the compliance management database, Qudos*

TRACK ADJUSTMENT:					
1. Defect found and repaired	3. OK	1	2	3	4
2. Defect found and recorded; machine still OK	4. Not Applicable				
Track Adjustment				✓	
Condition of Track Rollers				✓	
Track Pins & Bushes				✓	
Track Roller Bolts – loose or missing				✓	
Track Frame condition Cannon chrome				✓	
Canon - leaks				✓	
Grouser bolts - tight visual check				✓	
Sprocket segment bolts				✓	
Carrier Roller & Bolts				✓	
Idler bolts – missing or loose				✓	
Front Idler Position				✓	
Idler Condition LHF	Idler Condition RHF			✓	
Idler Condition LHR	Idler Condition RHR				

CHECK:				
KEY:				
1. <u>Machine is not safe</u> , defect must be repaired				
2. Defect found and recorded, machine safe to operate				
3. Defect found and repaired				
4. OK				
5. Not applicable				
GET CONDITION	Initial Appropriate Column			
	1	2	3	4
Blade Cutting Edges				✓
Blade Corner tips LH				✓
Blade Corner Tips RH				✓

Note: The electronic copy of this document is controlled. To ensure that other copies of this document are current, check the revision number and date against the compliance management database, Qudos

Prepared By: Troy Slorach      Date: 31/08/2020      Approved By: Troy Slorach      Date: 31/08/2020  
 Rev. No: 3      Date Implemented: 31/08/2020

