

Plant Risk Assessment



Inspector:	Harrison Ryder
Client Name:	Charles Nipper
Client:	Focus Machinery
Address:	908-920 Mountain Highway
Suburb:	Bayswater VIC 3153
Plant Type:	Excavator
Make:	Komatsu PC35MR-5
Serial Number:	32974
Hour Meter:	631.7
Modified From Original Condition?:	No
Plant Number:	M355
License Required:	Yes
dB Rating operating cabin:	
Travel Height: 2600mm	

Preface

This Hazard/Risk assessment report has been prepared as requested of the client in fulfilment of duty of care to provide a safe and functional piece of mobile plant. This only has a validity of twelve (12) months from the date of the report.

Compliance: Compliance has been determined using the below where deemed appropriate:

- Worksafe Compliance Code – Plant
- OH&S Regulations 2017
- OHS Act 2004
- AS4024-2014 Safety of Machinery

The report is based on the visual observations of the inspector on the day of inspection and did not include observation of equipment in operation. While the inspector takes reasonable care to be thorough, under the conditions of this inspection it is not possible to ensure that every hazard has been observed or reported. Since vandalism, disassembly, normal wear and tear and operational use are ongoing risks to safety. The operator must carry out Job Safety Analysis, Pre-Start Checks, and adhere to the operator's manual as outlined in the manufacturer's documentation.

The relative urgency of rectification is indicated by the score as detailed in the Analysis Matrix table. Please do not hesitate to contact JR Safety and Compliance Pty Ltd if further clarification is required.

Analysis Matrix

Likelihood	Consequence					
		Insignificant	Minor	Moderate	Major	Catastrophic
Almost Certain		Medium	High	Very High	Very High	Very High
Likely		Medium	High	High	Very High	Very High
Sometimes		Low	Medium	High	High	Very High
Rarely		Low	Low	Medium	Medium	High
Highly Unlikely		Low	Low	Low	Medium	Medium

Risk Evaluation

- **Catastrophic** – Fatality – Act immediately to mitigate the risk.
- **Major** – Extensive injuries – Act immediately to mitigate the risk. If the correct treatments are not available immediately establish interim risk reduction strategies.
- **Moderate** – Medical Treatment required – Take reasonable steps to mitigate the risk and implement the risk treatments as soon as reasonably practicable.
- **Minor** – First Aid Treatment – Implement the risk treatments as soon as reasonably practicable.
- **Insignificant** – No risk of injury but as always take caution and reasonable steps to monitor risk.

Hierarchy of Controls

- **Elimination** – This is a permanent solution and should be attempted in the first place.
- **Substitution** – This includes plant which present a lower level of risk.
- **Isolation** – Isolate the Hazard, use guarding or prevent access etc.
- **Engineering** – Safe alternative manufacturing guarding or barriers.
- **Administration** – Implement Policies, Procedures, Training and safe work practices.
- **PPE** – Ensure that individuals are equipped with the proper personal protective equipment to perform the task. (Glasses, Gloves, Protective Foot ware, Hard Hats, Wide Brimmed Hats, Sunscreen, Ear Protection etc).

Hazard Checklist

Entanglement Can anyone's hair, clothing gloves, necktie, jewellery, rags, or other material become entangled with the moving parts of the plant.			
Issue	Status	Comments/Issues	Risk Rating
Guards Installed for Engine fan.	Yes		Low
Guards installed for belts & pulleys.	Yes		Low
Engine covers fitted.	Yes		Low
Warning Decals - (Do not open with engine running).	Yes		Medium
Warning Deals for Personal (i.e. clothing, hair etc).	Yes		Medium
Secure Work Zone.		Responsibility of operator to consider adequate exclusion zone when machine is in operation. Taking attachments into account.	
Rotating Parts Decal Fitted	Yes		Medium
Engine Bay enclosed with limited access.	Yes		Low
Battery Isolator lockable	Yes		Low
External emergency stop fitted and accessed at ground level.	Yes	Complies to AS4024. 1604-2019.	Low
Crushing Can a person be crushed due to Material falling off the plant, Uncontrolled or unexpected movement of the plant or its load, the plant tipping or rolling over, parts of the plant Collapsing, coming in contact with moving parts of the plant during testing, inspection, maintenance, cleaning or repair, being thrown off or under the plant, being trapped between the plant and materials or fixed structures and any other factors?			
Issue	Status	Comments/Issues	Risk Rating
Neutral Start Switch (Forward/Reverse Leaver).	Yes		Low
Reversing/Travel Alarm (above 87dBa @ 1mtr).	Yes	Squawker type alarm fitted.	Low
Amber Flashing Beacon (Visible position - from 200m - 360 degrees).	Yes		Low
Crush Zone Warning Decal for hitch and blade area.	Yes		Medium
Control Pedals - Non Slip Surface.	Yes		Low
Controls have the appropriate knobs.	Yes		Low
Machine may suddenly reverse decal.	Yes		Medium

Issue	Status	Comments/Issues	Risk Rating
Rear view mirror (Mirrors to be adjusted to reduce blind spots).	Yes		Medium
Operator Protection Guard.	Yes	Cab conforms to ISO 10262 Level I	Low
Emergency Exit Identified.	Yes		Low
Cabin Clear (No chains etc)		Responsibility of operator.	
Service Brake Operational.	Yes		Low
Parking Break Operational.			Low
Battery Isolator.	Yes		Low
Hydrostatic Drive (Emergency Stop).	Yes		Low
Slope Indicator Fitted - (Ref to SWIMS).	Yes		Medium
Attachment instructions (If attachment is fitted).		Responsibility of operator.	
Seat belt fitted.	Yes	Fitted seatbelt is in good condition, Conforms to ISO6683. And does not require replacement as per manufacturers requirements.	Low
Seat Belt must be worn decal.	Yes		Low
No phone use while operating the machine decal fitted.	Yes		Medium
Hydraulic Quick Hitch Identification Plate (Serial Number, Manufactures Name and Model, maximum rated capacity, lift point capacity)	Yes	Fitted quick hitch compliant to AS4772 - Preventing attachments from detaching in the event the primary system fails. Operator to ensure only attachments with correct pin centers/spacings for quick hitch requirements.	Low
Ensure that all operators follow approved SWMS/SOP when loading and unloading this machine to and from a flat top truck or trailer, low loader or tilt tray.		Responsibility of operator/owner	
Emergency Stops (If fitted)	Yes	Conforms to AS 4024. 1604:2019	Low
Rear Swing Warning Decal or Swing Lights Fitted	Yes		Medium
Safety Bar/ROPS fitted & Decal	Yes		Low
Iso Certified Rops Structure fitted.		Conforms to ISO 3471:2008	
No Passenger Decal Fitted	Yes		Low
External Emergency Stop fitted and clearly marked.	Yes	Conforms to AS 4024. 1604:2019	Low
Approved Lifting points marked with closed eye.	Yes		Low

Issue	Status	Comments/Issues	Risk Rating
Correct Retaining Pins fitted (No bolts, Steel Rods, Wire to be used as retaining pins).	Yes		Low
Work Area to be barricaded during operation with appropriate exclusion zone.		Responsibility of operator to ensure adequate exclusion zone when machine is in operation. Taking attachments into account.	

Cutting, Stabbing and Puncturing

Can anyone be cut, stabbed or punctured due to:

Coming in contact with sharp or flying objects, with moving parts of the plant during testing, inspection, operation, maintenance, cleaning or repair of the plant?

Parts of the plant or work pieces disintegrating?

Work pieces being ejected?

The mobility of the plant?

Uncontrolled or un expected movement of the plant?

Issue	Status	Comments/Issues	Risk Rating
Guarding.	Yes		Medium
Trained person only.		Operator to be competent in use of machine as well as machine/attachment combinations.	
Tag out procedures in place.		Responsibility of operator/owner.	
Engine Bay fitted with lockable door.	Yes		Low
Travel Alarm and Rotating Beacon fitted.	Yes		Low
Work Area to be barricaded during operation with appropriate exclusion zone.		Responsibility of operator.	
Eye protection to be worn when performing maintenance or prestart activities.		Responsibility of operator/owner.	
Rotating Part Decal fitted.	Yes		Medium
Horn Fitted to alert bystanders.	Yes		Low
Daily Inspections of Hoses/Pumps/Valves to check for any leaks or damage etc and tag out if so.		Responsibility of operator.	

Shearing

Can anyone's body parts be cut off between two parts of the plant, or between a part of the plant and a work piece or structure?
 In addition to the controls mentioned above under crushing, striking, cutting and stabbing

Issue	Status	Comments/Issues	Risk Rating
Decals - Crush Zone.	Yes		Medium
Warning Sign.	Yes		Medium

Issue	Status	Comments/Issues	Risk Rating
Shearing Guarding.	Yes	shearing from attachments disconnecting from machine/connecting parts during operation. Shearing during use of excavator as a lifting device.	Medium
Friction Can anyone be burnt due to contact with moving parts or surfaces of the plant, or material handled by the plant			
Issue	Status	Comments/Issues	Risk Rating
Safe Work Procedures in place.		Responsibility of operator/owner.	
Guards.	Yes		Medium
PPE (Eye and Hand Protection to be worn when performing maintenance or prestart activities).		Responsibility of operator/owner.	
Striking Can anyone be struck by moving parts due to working pieces being ejected:			
Issue	Status	Comments/Issues	Risk Rating
Keep Clear Warning Decal.	Yes		Medium
Quick Hitch Independent Latching Device supplied.		Machine fitted with quick hitch compliant to AS4772:2008	
Engine Fan Guard.	Yes		Low
Belts & pulley guards.	Yes		Low
Keep clear warning decals fitted to the jib arm.	Yes		Medium
Correct retaining pins.	Yes		Low
Amber flashing beacon.	Yes		Low
Reversing Decal fitted.	Yes		Medium
Front and or Rear work lights.	Yes		Low
Reflective side tape fitted.	Yes		Low
Warning Horn	Yes		Low
Safe operation of Quick hitch decal	Yes	Only use attachments with correct pin centers/spacing for quick hitch.	Low
Work Area located and barricades in place to prevent access into operating area or exclusion zone.		Responsibility of operator.	

Issue	Status	Comments/Issues	Risk Rating
When fitting the following attachments: Auger / Rock Breaker / Grab / Broom / Mulcher the operator/owner to ensure:		combined weight of attachments is not to exceed Excavator rated SWL / 75% of machines tipping capacity.	
Exclusion Zone is in place.		Responsibility of operator.	
Daily inspections are carried out on the wear points on the attachment.		Responsibility of operator.	
Approved only attachments to be used on the machine.		Responsibility of operator/owner	
Operator to be competent in the use of attachment.		Responsibility of operator/owner	
High Pressure Fluid Can anyone come into contact with fluids under high pressure, due to plant failure or misuse of the plant?			
Issue	Status	Comments/Issues	Risk Rating
All hose clamps fitted.	Yes	Competent person only to connect/disconnect attachment hoses to machine.	Low
High Pressure Warning decals.	Yes	Ensure hoses fitted to attachments have working pressure above maximum system pressure of machine.	Medium
All pipes clamped	Yes		Low
High Pressure Fluid Decal	Yes	Eye and Hand protection to be worn when checking fluid levels during pre start.	Medium
Track Adjustment Cylinder decal	Yes		Low
Battery Explosion warning decal fitted.	Yes		Low
Pressure Release Radiator Cap fitted.	Yes	Radiator overflow tank fitted preventing the need to opening the system in order to check fluid levels.	Low
Sheathing fitted to hoses to prevent rubbing and failure.	Yes		Low
Lockable Battery Isolator fitted - so machine can be locked out before any maintenance activities are undertaken.	Yes	Red lockable style battery isolator fitted.	Low
Relieve any pressure from system before undertaking any maintenance activities and follow manufactures procedures.		Responsibility of operator/owner	

Electrical

Can anyone be injured by electrical shock or burnt due to:
 The plant contacting live electrical?
 The plant working to close proximity to electrical conductors?
 Overload of electrical circuits?
 Damage or poorly maintained electrical cables?
 Damage to electrical components?
 Lack of Isolation procedures?

Issue	Status	Comments/Issues	Risk Rating
Overhead Electrical Hazard / obstructions decal fitted.	Yes	All overhead services to be identified prior to operation.	Low
Dial before you Dig Decal.	Yes	All underground services to be identified prior to operation.	Medium
Isolation Switches in good condition.	Yes	All circuits are protected with appropriate circuit breakers/fuses.	Low
Look up and Live Decal fitted.	Yes		Low
Battery Constrained to prevent displacement.	Yes		Low
Battery Isolator lockable	Yes		Low
Any damage to electrical wires?	No		Low
Travel Height of Machine decal	Yes		Low
Electrical Spotter to be used if working within close proximity of electrical wires.		Responsibility of operator.	
Rubber Matting or rubber boots covering the battery terminals to prevent contact with live terminals.	Yes		Low

Explosion

Can any one be injured by explosion of gases, vapours, liquids, dusts or other substances, triggered by the operation of the plant or by material handled by the plant?

Issue	Status	Comments/Issues	Risk Rating
Hydraulic Accumulator.	Yes		Low
Fuel Decal.	Yes		Medium
Hydraulic Oil Decal.	Yes		Medium

Slipping Tripping and Falling

Using the plant or being in the vicinity of the plan, slip, trip or fall due to the working environment or other factors? E.g. Poor Housekeeping, slippery or uneven work surface or lack of guardrails.

Issue	Status	Comments/Issues	Risk Rating
-------	--------	-----------------	-------------

Issue	Status	Comments/Issues	Risk Rating
Machinery tracks or steps are clean (Clear of mud).		Fitted steps are of a non-slip design. Responsibility of operator to ensure steps are clean.	
Adequate Steps/footings in place.	Yes		Low
Adequate guardrails/handrails/grab rails in place.	Yes	Hand rails must be fitted to conform with AS3868-1991	Low
3 points of contact decal fitted.	Yes	Ensure 3 points of contact is able to be maintained during access and egress from machine.	Low
No visible signs of excessive lubricant leakage.	No		Low
Operator's Station clear of Debris (e.g. Cans of paint, grease cartridges, chains, drink bottles, eskies, quick hitch safety pins etc).		Responsibility of operator.	
Appropriate footwear to be worn at all times.		Responsibility of operator/owner.	

Ergonomic

Can anyone be injured due to seating design, repetitive body movement or posture, excessive effort, poor workplace or plant design causing mental or physical stress, lack of consideration for human behavior, poor lighting or other factors not mentioned?

Issue	Status	Comments/Issues	Risk Rating
Seat in useable condition.	Yes	Seat to be adjusted to ensure correct posture to avoid straining during machine operation.	Low
Operation Controls (Levers & Pedals in operators Reach).	Yes		Low
Seat Adjustment Controls Operational.	Yes		Low
Control Labels readable.	Yes		Low
Mirrors to be adjusted to avoid straining.		Responsibility of operator to ensure mirrors are adjusted correctly prior to machine operation.	

Suffocation

Can anyone be suffocated due to lack of oxygen, or atmospheric contamination?

Issue	Status	Comments/Issues	Risk Rating
Not excessive Engine fumes.	No		Low
Door & Window seals well maintained (Where applicable).	Yes		Low

Issue	Status	Comments/Issues	Risk Rating
If working in an enclosed area operator to ensure there is adequate ventilation present, in some cases a further Risk Assessment may need to be carried out prior to operating.		Responsibility of operator/owner	

High Temperature or Fire

Can anyone come into contact with objects at high temperature or injured by fire?

Issue	Status	Comments/Issues	Risk Rating
Exhaust in adequate condition.	Yes		Low
Hot Hazardous exhaust decal.	Yes		Medium
Fire Extinguisher in the Equipment and maintained to AS 1851-2012.	Yes	Responsibility of operator/owner to ensure fire extinguisher is maintained to AS1851.	Medium
Hot Surface Warning Decals.	Yes		Medium
Service History up to date.		Responsibility of owner.	
Exhaust Guard fitted to help protect from accidental contact?	Yes	Exhaust is guarded from accidental contact and routed so that accidental contact during pre start checks and maintenance is unlikely.	Low
Tank ID Label Fitted	Yes		Low
All areas exposed to high temperatures to be clear of combustible materials.		Responsibility of operator.	

Thermal Comfort

Can anyone suffer ill-health due to exposure to high or low temperatures?
 Can the operator get sun burnt?

Issue	Status	Comments/Issues	Risk Rating
Ventilation.		Responsibility of operator to ensure adequate ventilation prior to and during operation of machine.	
PPE & Sunscreen provided.		Responsibility of operator/owner.	
Sun protection decal fitted.	Yes		Medium

Noise

Is the noise level of the piece of equipment at a point that could damage your hearing?

Issue	Status	Comments/Issues	Risk Rating
Enclosed Cab.	No		Medium
PPE Protection Decals.	Yes		Medium

Issue	Status	Comments/Issues	Risk Rating
Hearing protection supplied.		Responsibility of operator.	
Lifting Load Capacity			
Issue	Status	Comments/Issues	Risk Rating
SWL/WWL Marked on the Boom?	Yes	Operator to ensure combine weight of attachments not to exceed the SWL or 75% of machines tipping capacity.	Low
Approved Lifting Points?	Yes		Low
Load Capacity Chart fitted?	Yes		Medium
Documentation Is the following documentation in the cab or readily available to the operator?			
Issue	Status	Comments/Issues	Risk Rating
Operators Manual with the equipment.	Yes		Low
Attachment Risk Assessment (if applicable).		Responsibility of operator.	
Service & Maintenance Records to be up to date.	Yes	Responsibility of owner to ensure service & maintenance is carried out by a suitably qualified mechanic in line with manufacturer requirements for maintenance or repair.	Low
Plant Pre-Start Check List.		Responsibility of operator to ensure pre start is carried out daily, prior to use of the machine.	
Safe Working Method Statement and procedures in place.		Responsibility of operator/owner.	
Traffic Management in place (if applicable).		Responsibility of operator/owner.	

Report Images

Machine Photo Images



Report Images

Data Plate Images



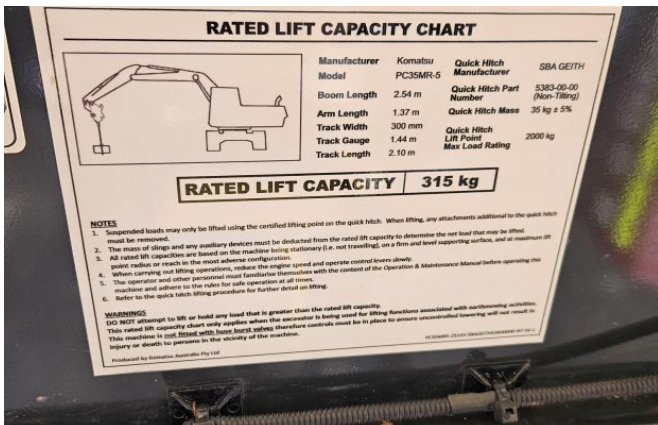
Report Images

ROPS Plate Images



Report Images

Quick Hitch Images



Report Images

Hour Meter Images



Report Images

Service Sticker Images



Important Notes

- Service History it to be up to date and maintained by the Hiree, Owner and operator.
- The above assessment is based on the machine only not the site or work environment it may be used. This is the responsibility of the operator to ensure safe work practices and Pre-Start Checks are followed.
- All operators to be trained prior to use of machinery.
- All attachments used with the machine need to have data plates.
- If any piece of machinery is used as a crane this needs to be adhered to the Crane Act, including understanding Load Charts for the machine and swivel hook to lift.

Hirer / Operator Acknowledgment:

I the undersigned acknowledge that I have read and understand the risk management report described above. I also acknowledge that I have received a copy of this risk management report:

We the undersigned, confirm that the Plant Risk Assessment included in this report has been explained and its contents are clearly understood. We also confirm that our required qualifications to undertake this activity are current. We also clearly understand that the controls in this Plant Risk Assessment must be applied as documented, otherwise work is to cease immediately.

Name:	Qualification:	Signature:	Date:	Employer:



Report Number: #003673
Inspection Date: June 3rd, 2024
Expiry Date: June 3rd, 2025

© Copyright. This report has been produced for the sole use of JR Safety and Compliance Pty Ltd and the named client and the report or the information contained therein may not be copied or reproduced either in part or in whole by any means whatever for any purpose other than for the information of the named client without the prior written consent of JR Safety and Compliance Pty Ltd.

Fleet Service Job

Cert No:	FM56532	Date Completed:	13/09/2022
Company Name:	WAMARRA PTY LTD	Contact:	Matt Van Seters
Fleet No:	M355	Serial No:	32974
Engineer:	Leigh E	Work Completed:	50 Hour Service - BOOKED FOR TUES 13/9 - MATT 0488 456 067
Notes:	50hr inspection		

Test	Value	Result
Change Engine Oil and Filter		N/A
Check and Clean Outer Air filter		Pass
Check and Fill Coolant Level		Pass
Battery Service and Inspection		Pass
Check and Fill Hydraulic Oil Level		Pass
Take Hydraulic Oil Sample		N/A
Change Final Drive Hub Oils		N/A
Check Hydraulic Functions: Fittings, Hoses, Cylinders etc		Pass
Check UHF		N/A
Check Risk Assessment		Pass
Check Fire Extinguisher		Pass
Visual Inspection of Machine (Panels)		Pass
Check Buckets		Pass
Check E-Stop		Pass
Fully Grease Machine		Pass
Apply and Fill out Service Decal		Pass
Please note any Further Work Required		Pass

Signed By: Leigh

Signature:



Fleet Service Job

Cert No: FM56532

Company Name: WAMARRA PTY LTD

Fleet No: M355

Engineer: Leigh E

Date Completed: 13/09/2022

Contact: Matt Van Seters

Serial No: 32974

Work Completed: 50 Hour Service - BOOKED FOR TUES 13/9 -
MATT 0488 456 067

Signed By: Leigh

Signature:



Fleet Service Job

Cert No: FM65711 **Date Completed:** 23/03/2023
Site Name: Depot
Fleet No: M355 **Serial No:** 32974
Engineer: Daniel **Work Completed:** 250 Hour Service
Notes: E STOP WASNT WORKING REWIRED E STOP AND TESTED NOW WORKING
COMPLETED SERVICE AS PER INSPECTION LIST
TIGHTENED CUTTING EDGE

Test	Value	Result
Change Engine Oil and Filter		Pass
Change Fuel Filter and Clean out Fuel/ Water Seperator		Pass
Change Outer Air Filter		N/A
Check and Adjust Fan Belt		Pass
Check and Fill Coolant Level		Pass
Battery Service and Inspection		Pass
Change Hydraulic Return Filter and Top up Oil Level		Pass
Change Final Drive Hub Oils		Pass
Check Hydraulic Functions: Fittings, Hoses, Cylinders etc		Pass
Check Track Gear: Rollers, Sprockets and Idlers		Pass
Check and Adjust Tracks		Pass
Check Electrics: Horn, Lights, Travel Alarm, Flashing Lights		Pass
Check UHF		N/A
Check Risk Assessment		Pass
Check Fire Extinguisher		Pass
Visual Inspection of Machine (Panels)		Pass
Check Buckets		Pass

Signed By: Daniel McMartin

Signature:



Fleet Service Job

Cert No:	FM65711	Date Completed:	23/03/2023
Site Name:	Depot		
Fleet No:	M355	Serial No:	32974
Engineer:	Daniel	Work Completed:	250 Hour Service
Check all Machine Functions			Pass
Check E-Stop			Pass
Fully Grease Machine			Pass
Apply and Fill out Service Decal			Pass
Please note any Further Work Required			Pass

Parts Used

Part No	Description	Qty
YM129150-35153	CARTRIDGE	1
YM129242-55730	KOMATSU PRE-FUEL FILTER - PC35MR-5	1
15W/40 DHD	DIESEL FLEET DHD 15W/40 CI-4	7
FOCUS SERVICE DECA	FOCUS SERVICE DECAL 90X60	1
KOWA-OIL-CM	OIL SAMPLE KIT	4
80W90	80W90 GEAR OIL	2

Signed By: Daniel McMartin

Signature:



Fleet Service Job

Cert No: FM78862
Site Name: Depot
Fleet No: M355
Engineer: Hayden

Date Completed: 23/01/2024
Meter Reading: 487Hrs
Serial No: 32974
Work Completed: 500 Hour Service

Test	Value	Result
Engine oil		Pass
Coolant level		Pass
Cooling system pressure		Pass
Intake hoses inspect		Pass
Air filters		Pass
Exhaust system		Pass
Water pump pulley bearings		Pass
Drive belts		Pass
Overall engine condition		Pass
Throttle operation		Pass
Air pre-cleaner		Pass
Damper case oil		Pass
Track sprocket		Pass
Final drive oil levels		Pass
Track rollers		Pass
Track idlers		Pass
Track tensioners		Pass
Track plates		Pass

Signed By:

Signature:

Fleet Service Job

Cert No: FM78862**Site Name:** Depot**Fleet No:** M355**Engineer:** Hayden**Date Completed:****Meter Reading:****Serial No:** 32974**Work Completed:** 500 Hour Service

Track chains and pins	Pass
Drive motor hoses	Pass
Drive motor cover plates	Pass
Under carriage belly plates	Pass
Track adjustment	Pass
Overall condition	Pass
Work lights	Pass
Beacons	Pass
Aerials	Pass
Battery terminals	Pass
Battery clamps	Pass
Battery fluid	Pass
Jump start receptacle	N/A
Battery and starter isolators	Pass
Horn	Pass
Travel alarm	Pass
Rear camera	N/A
Interior light	N/A
Windscreen wipers	N/A
Windscreen washer and fluid	N/A

Signed By:**Signature:**

Fleet Service Job

Cert No: FM78862**Site Name:** Depot**Fleet No:** M355**Engineer:** Hayden**Date Completed:****Meter Reading:****Serial No:** 32974**Work Completed:** 500 Hour Service

Instrument cluster	Pass
UHF radio	N/A
Topcon GPS setup	N/A
AM/FM radio	N/A
Air conditioner fans	N/A
Emergency stops	Pass
Wiring	Pass
Hydraulic oil level	Pass
Hydraulic oil breather	Pass
Swing case oil level	N/A
Rams	Pass
Hoses	Pass
Pins and bushes	Pass
Control levers	Pass
Pilot control circuit functionality	Pass
Quick hitch functionality	Pass
Hydraulic attachment operation	N/A
Bucket	Pass
Bucket G.E.T	Pass
Blade	Pass

Signed By:**Signature:**

Fleet Service Job

Cert No: FM78862**Site Name:** Depot**Fleet No:** M355**Engineer:** Hayden

Quick hitch

H Link

Door and hold open latch

Windows

Floor mat

Seat condition

Seat belt

Arm rests

Seat function

Air conditioning operation

Air conditioning louvers

Air conditioning filters

Operators manual

Risk assessment

First aid kit and eye wash

Door locks

Panels

Handrails

Stickers

Ladders and steps

Date Completed:**Meter Reading:****Serial No:** 32974**Work Completed:** 500 Hour Service

Pass

Pass

N/A

N/A

Pass

Pass

Pass

Pass

Pass

N/A

N/A

N/A

Pass

Pass

Pass

Pass

Pass

Pass

Pass

Pass

Signed By:**Signature:**

Fleet Service Job

Cert No: FM78862**Site Name:** Depot**Fleet No:** M355**Engineer:** Hayden**Date Completed:****Meter Reading:****Serial No:** 32974**Work Completed:** 500 Hour Service

Engine cover	Pass
Belly plates	N/A
Auto grease	N/A
Grease lines and blocks	Pass
Grease swing circle pinion	Pass
Grease machine	Pass
Grease attachments	N/A
Fire extinguisher	Pass
Fuel level	Pass
Engine oil sample	N/A
Engine oil filter change	Pass
Engine oil change	Pass
Fuel water separator change	Pass
Primary fuel filter change	Pass
Secondary fuel filter change	N/A
Engine mounts	Pass
Air filters	Pass
Reset computer service	Pass
Final drive oil samples	N/A
Swing case oil sample	N/A

Signed By:**Signature:**

Fleet Service Job

Cert No: FM78862**Site Name:** Depot**Fleet No:** M355**Engineer:** Hayden

Hydraulic oil sample

Hydraulic oil breather clean

Date Completed:**Meter Reading:****Serial No:** 32974**Work Completed:** 500 Hour Service

N/A

Pass

Parts Used

Part No	Description	Qty
500KIT	EXCAVATOR 500HR KIT - M355	1
15W/40 DHD	DIESEL FLEET DHD 15W/40 CI-4 ENGINE OIL	7.2
80W90	80W90 GEAR OIL - PER LITRE	2
46W-1	46W-1 HYDRAULIC OIL	1
L-LXBLUE2 450	LUBEX BLUE EP2 GREASE (450G)	1

Signed By: Hayden Rourke**Signature:**