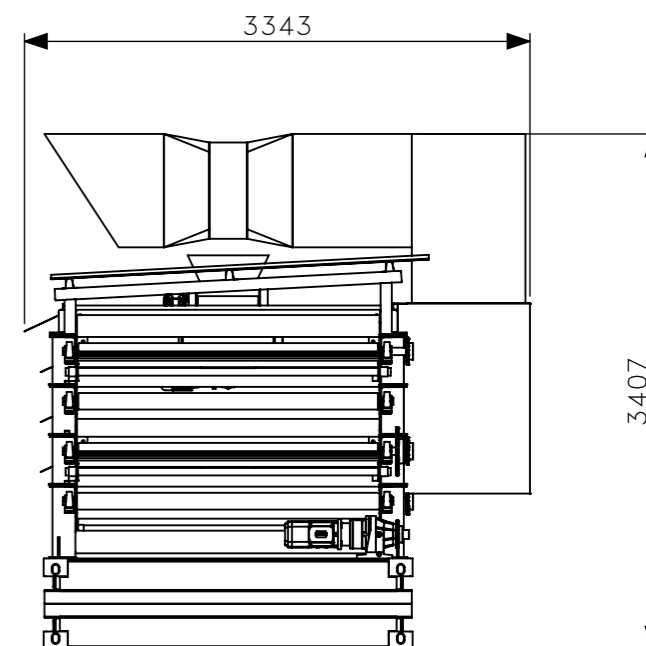


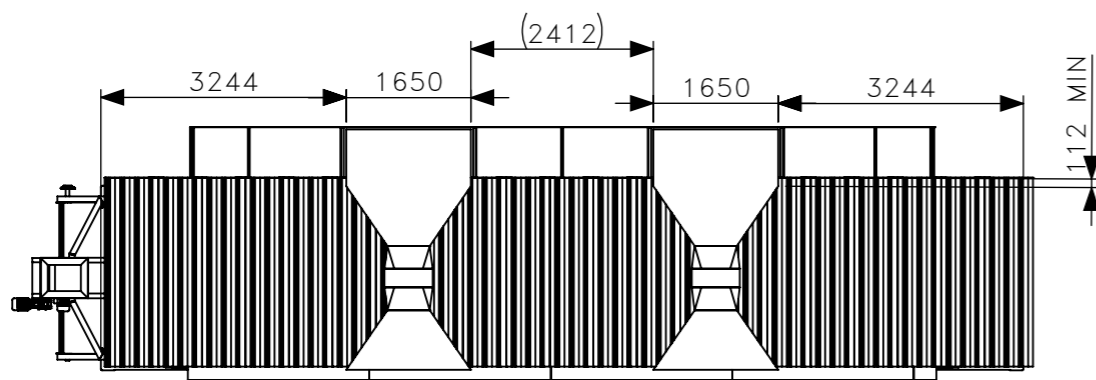
- NOTES:
- THE FOLLOWING SHALL APPLY UNLESS NOTED OTHERWISE
 - ALL WELDS FOR GENERAL PURPOSE, FULL-CONTINUOUS FILLET WELDED AT 6MM OR EQUAL TO THE MATERIAL THICKNESS WHERE THE THICKNESS FORMS A LEG OF THE FILLET, WHICHEVER IS THE LESSER. BUTT WELDS TO BE PRE-QUALIFIED COMPLETE PENETRATION WELDS
 - ALL WELDS TO BE PERFORMED IN ACCORDANCE WITH AS 1554.1 USING ELECTRODE TYPES E48XX OR W50X MINIMUM CONFORMING TO AS 2717.1, 1553.1, 1858.1 OR 2203
 - STEEL GRADES MUST BE GRADE 300 OR GREATER AS PER AS 3679.1, AS 1163, AS 1594 OR AS 3678
 - ADDITIONAL TOP HAT MAY BE REQUIRED DEPENDING ON THE MOUNTINGDETAIL OF THE TOP DUCTING

THIS DESIGN CONFORMS WITH THE REQUIREMENTS OF AS4100. REFER TO DRAWING LQ008-0 FOR APPROVAL ON BASE STRUCTURE

AARON LINDSTROM RPEQ#16913



ADDITIONAL ITEMS AS FOLLOWS:
 PRESSED ANGLED RAIN DIVERTERS—SEE DETAIL SHEET 2
 35 SHS MOUNTED TO TOP FLANGE OF PFC LOWER 3 DECKS—SEE DETAIL SHEET 5
 TOP DUCTING SUPPLIED—SEE DETAIL SHEET 4
 PLENUM AND ASSOCIATED MOUNTINGS—SEE DETAIL SHEET 3, 4 AND 5
 BRUSHES ON EACH DECK FOR AIR SEALING—SEE DETAIL SHEET 2



ROOF SHEET CUTOUTS

APPROVED FOR CONSTRUCTION

PROCESS PATH:

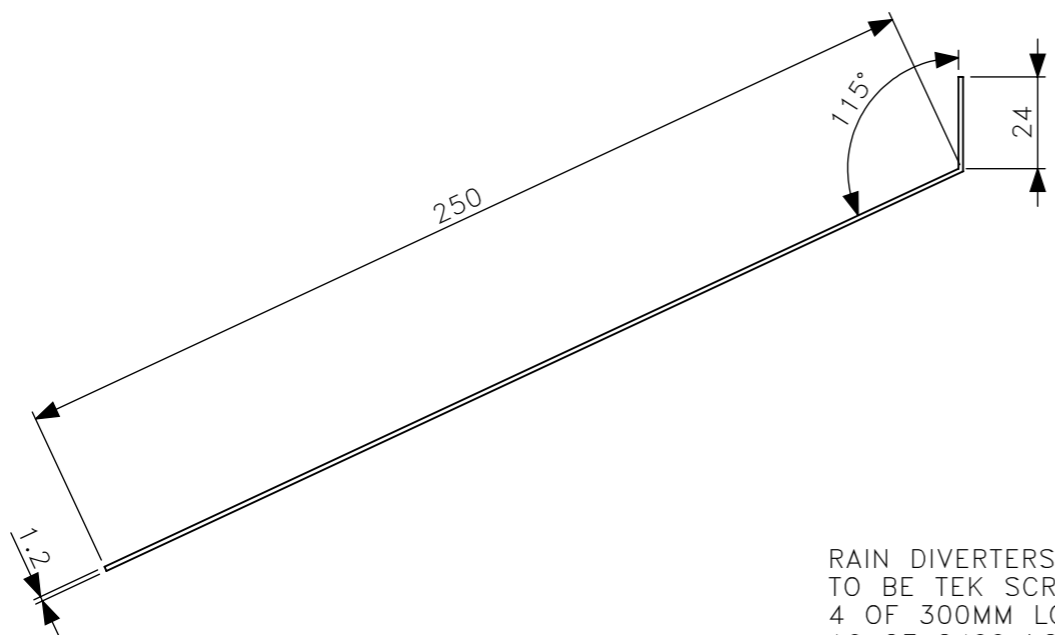
DESCRIPTION: Cascading Conveyor

PART NO: LQ008-Duct

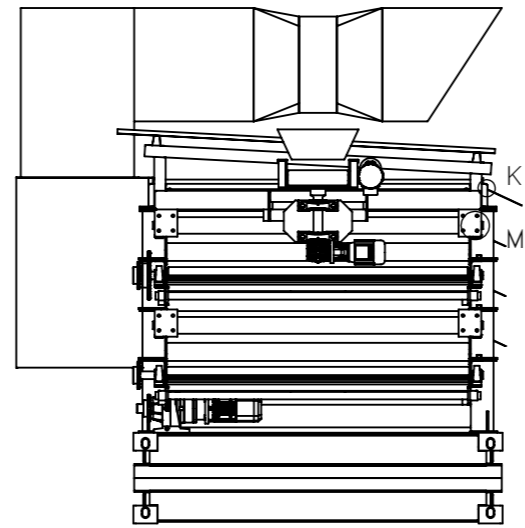
THIS DOCUMENT AND ALL OF ITS CONTENTS ARE COPYRIGHT © BY LINDSTROM ENGINEERING. NO PART OF THIS DOCUMENT MAY BE REPRODUCED, DISTRIBUTED OR USED FOR ANY PURPOSE OTHER THAN THAT SPECIFIED IN WRITING BY LINDSTROM ENGINEERING

LINDSTROM
ENGINEERING

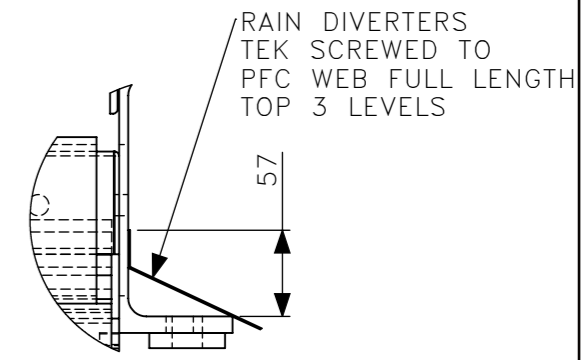
REV	SHEET	TOTAL MASS:	SCALE	Mod	Drw
A-01	1/6	22043 Kg	2:1	Chk DB	Chk DB



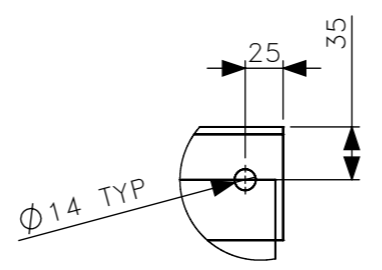
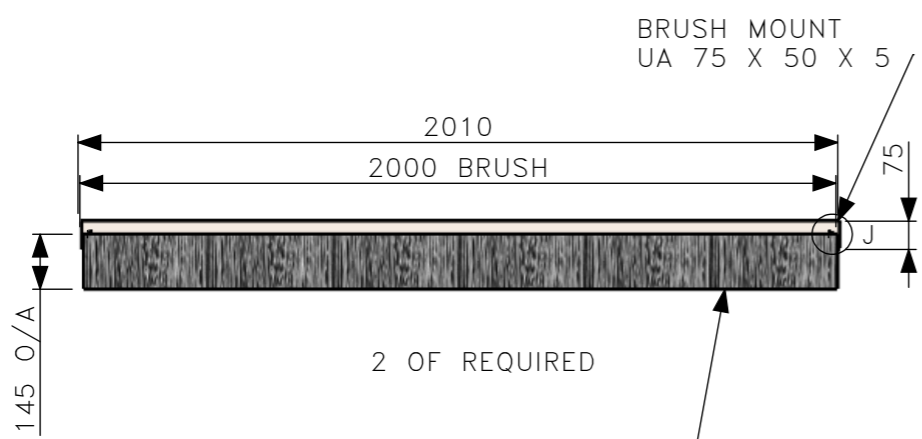
RAIN DIVERTERS
 TO BE TEK SCREWED TO PFC AND TOP SHS FRAME
 4 OF 300MM LONG
 16 OF 2400 LONG
 TO BE TRIMMED AROUND EXISTING POSTS WHEN ASSEMBLING



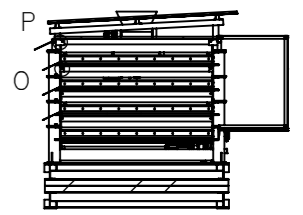
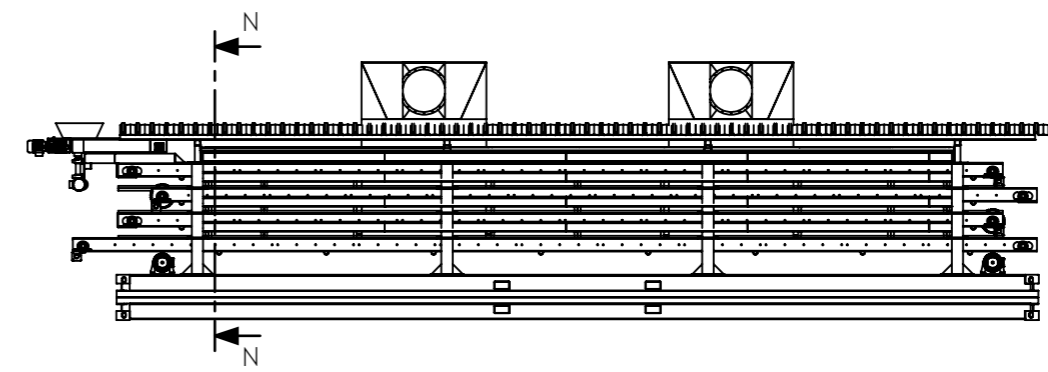
DETAIL K
 SCALE 1 : 5



DETAIL M
 SCALE 1 : 5
 SOME COMPONENTS
 HIDDEN FOR CLARITY

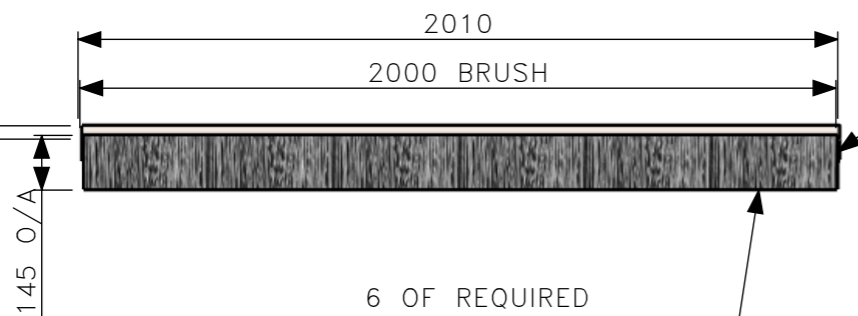


DETAIL J
 SCALE 1 : 5
 DETAIL BOTH ENDS

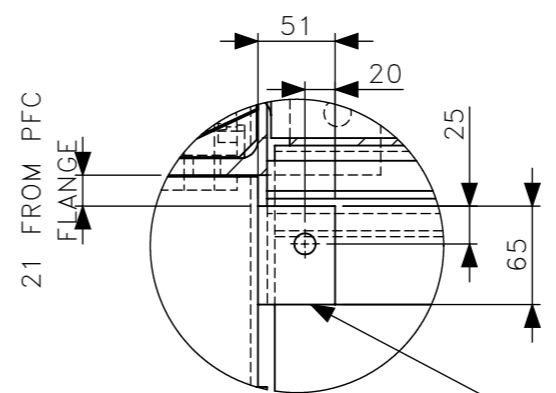


SECTION N-N
 SCALE 1 : 100

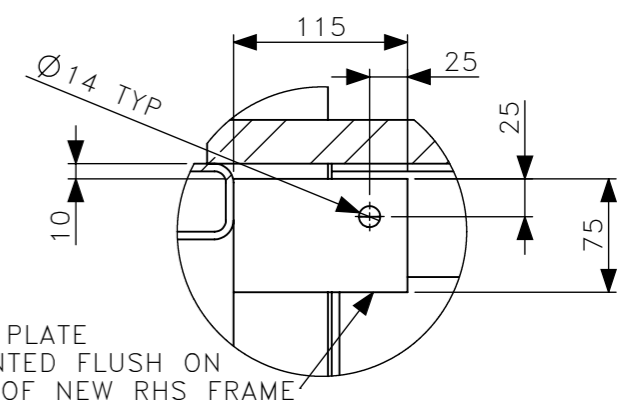
35 RUBBER STRIP
 TO SEAL UNDER
 CONVEYOR



BRUSH MOUNT UA
 75 X 50 X 5
 DETAIL AS ABOVE



DETAIL O
 SCALE 1 : 5
 MID BRUSH MOUNT DETAIL

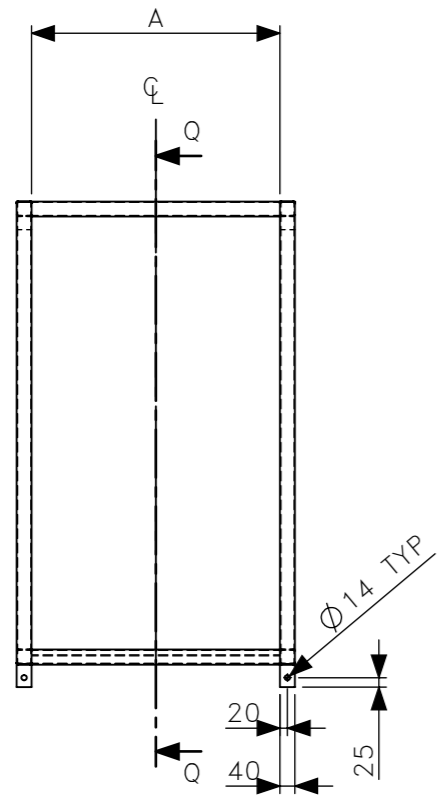


5MM PLATE
 MOUNTED FLUSH ON
 END OF NEW RHS FRAME

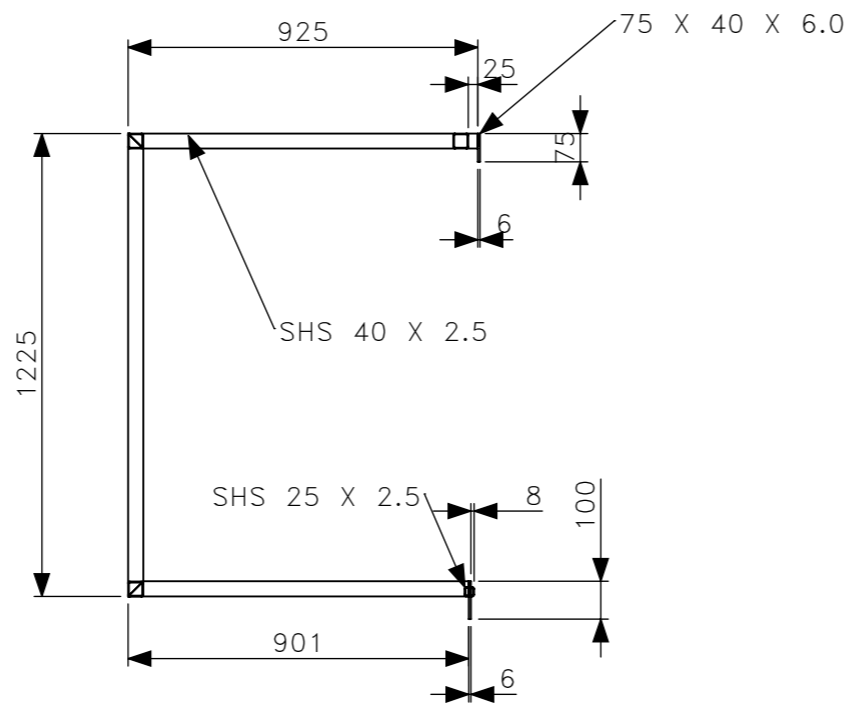
DETAIL P
 SCALE 1 : 5
 TOP BRUSH MOUNT DETAIL

INDUSTRIAL BRUSHWARE STONEGUARD
 OR EQUIVALENT

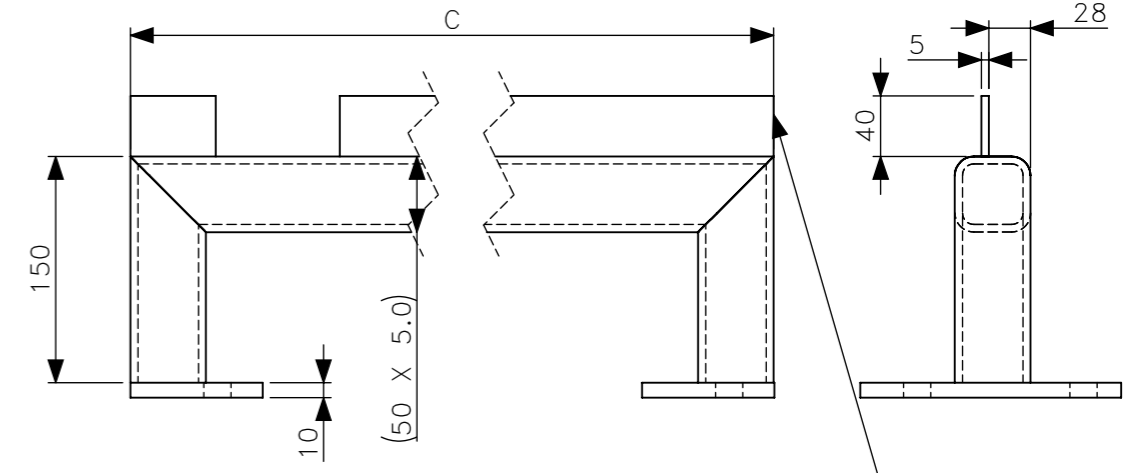
APPROVED FOR CONSTRUCTION		PROCESS PATH:	
DESCRIPTION: Cascading Conveyor			
PART NO: LQ008-Duct			
THIS DOCUMENT AND ALL OF ITS CONTENTS ARE COPYRIGHT © BY LINDSTROM ENGINEERING. NO PART OF THIS DOCUMENT MAY BE REPRODUCED, DISTRIBUTED OR USED FOR ANY PURPOSE OTHER THAN THAT SPECIFIED IN WRITING BY LINDSTROM ENGINEERING			
LINDSTROM ENGINEERING	REV	SHEET	TOTAL MASS:
	A-01	2/6	22043 Kg
SCALE	Mod	Drw	Chk
2:1	Chk	Chk	DB
DB	DB	DB	DB



FRAME DETAILS

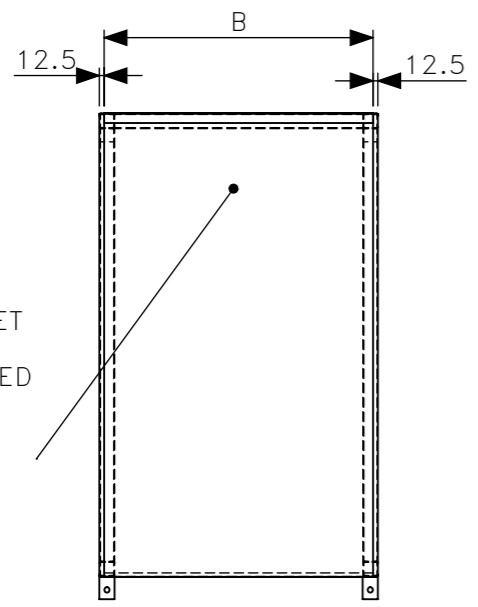
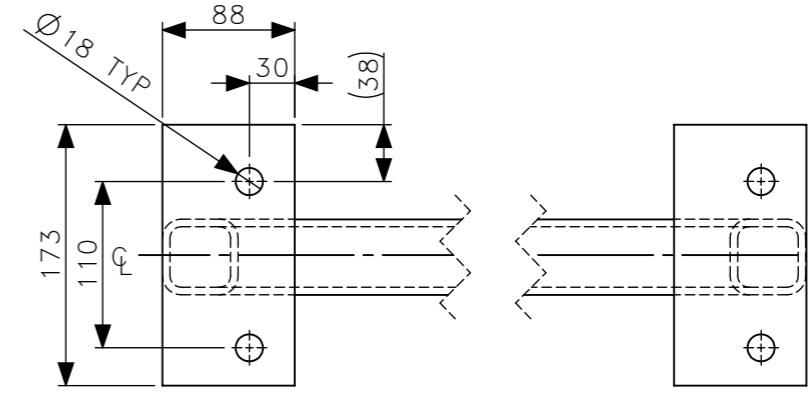


SECTION Q-Q
SCALE 1 : 20



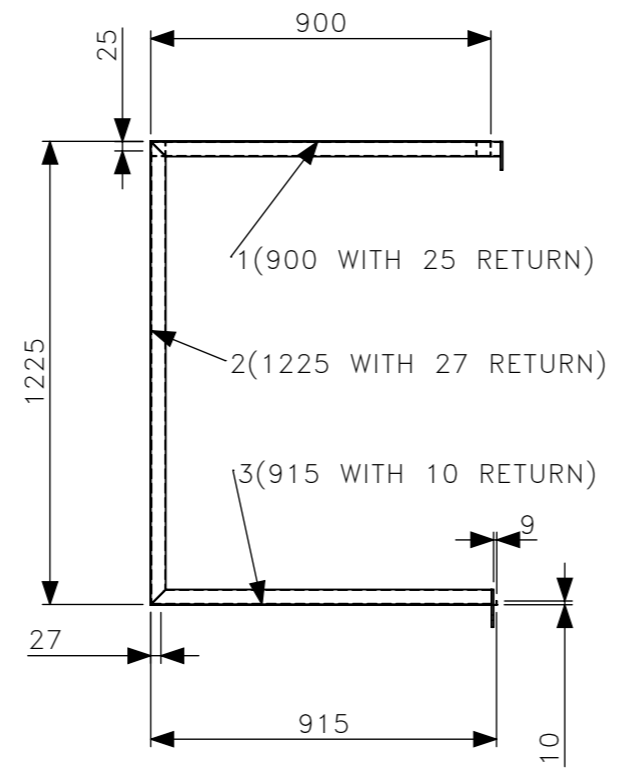
UPPER MOUNTING FRAME

40 X 5 FMS WILL NEED CUTOUTS TO MOUNT FRAMES OVER



3 X 0.6MM SHEET
OUTSIDE EDGE
SHEETS WILL NEED
TO BE TRIMMED
AROUND LOWER
MOUNTS

SHEETING
DETAILS



MOUNT	DIMENSION C	QTY
1	3205	2
2	3355	4

FRAME	DIMENSION A	DIMENSION B	Qty	LENGTH OF SHS ONE FRAME	LENGTH OF SHS TOTAL FRAMES
1	656	711	2	7420	14840
2	1145	1095	2	8400	16800
3	1062	1117	2	8230	16460

TOTAL 40 X 2.5 LENGTH = 48100

APPROVED FOR CONSTRUCTION

PROCESS PATH:

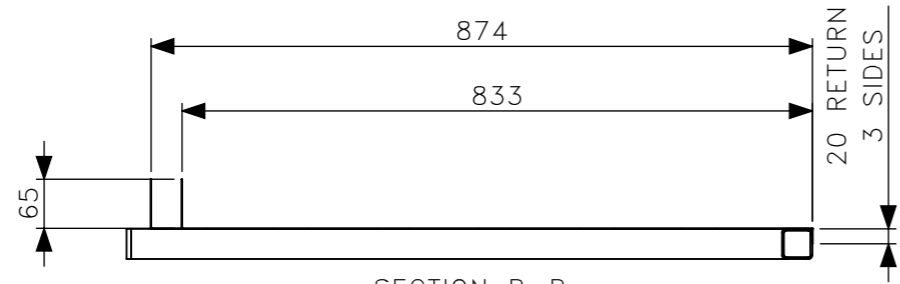
DESCRIPTION: Cascading Conveyor

PART NO: LQ008-Duct

THIS DOCUMENT AND ALL OF ITS CONTENTS ARE COPYRIGHT © BY LINDSTROM ENGINEERING. NO PART OF THIS DOCUMENT MAY BE REPRODUCED, DISTRIBUTED OR USED FOR ANY PURPOSE OTHER THAN THAT SPECIFIED IN WRITING BY LINDSTROM ENGINEERING

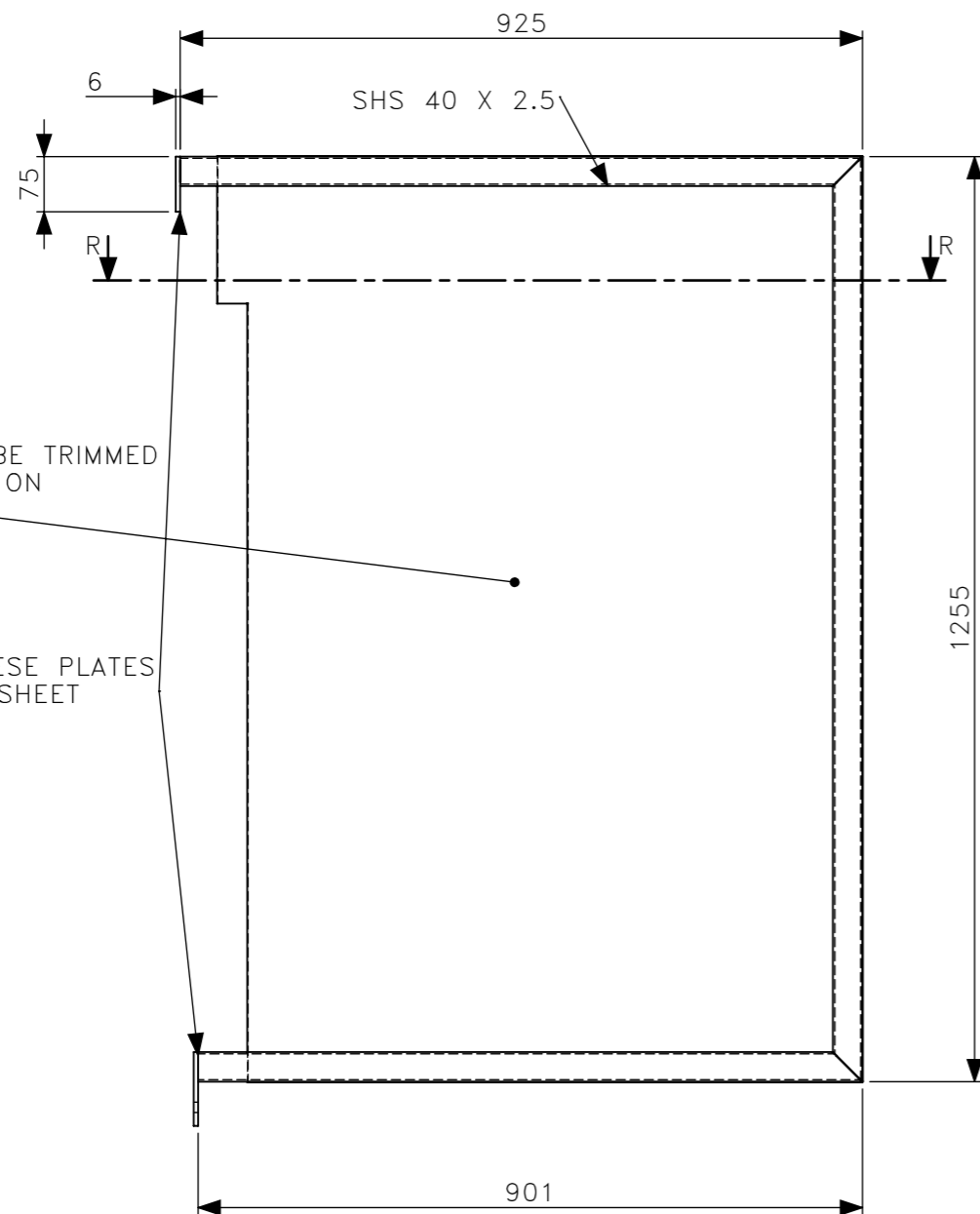


REV	SHEET	TOTAL MASS:	SCALE	Mod	Drw
A-01	3/6	22043 Kg	2:1	Chk DB	Chk DB

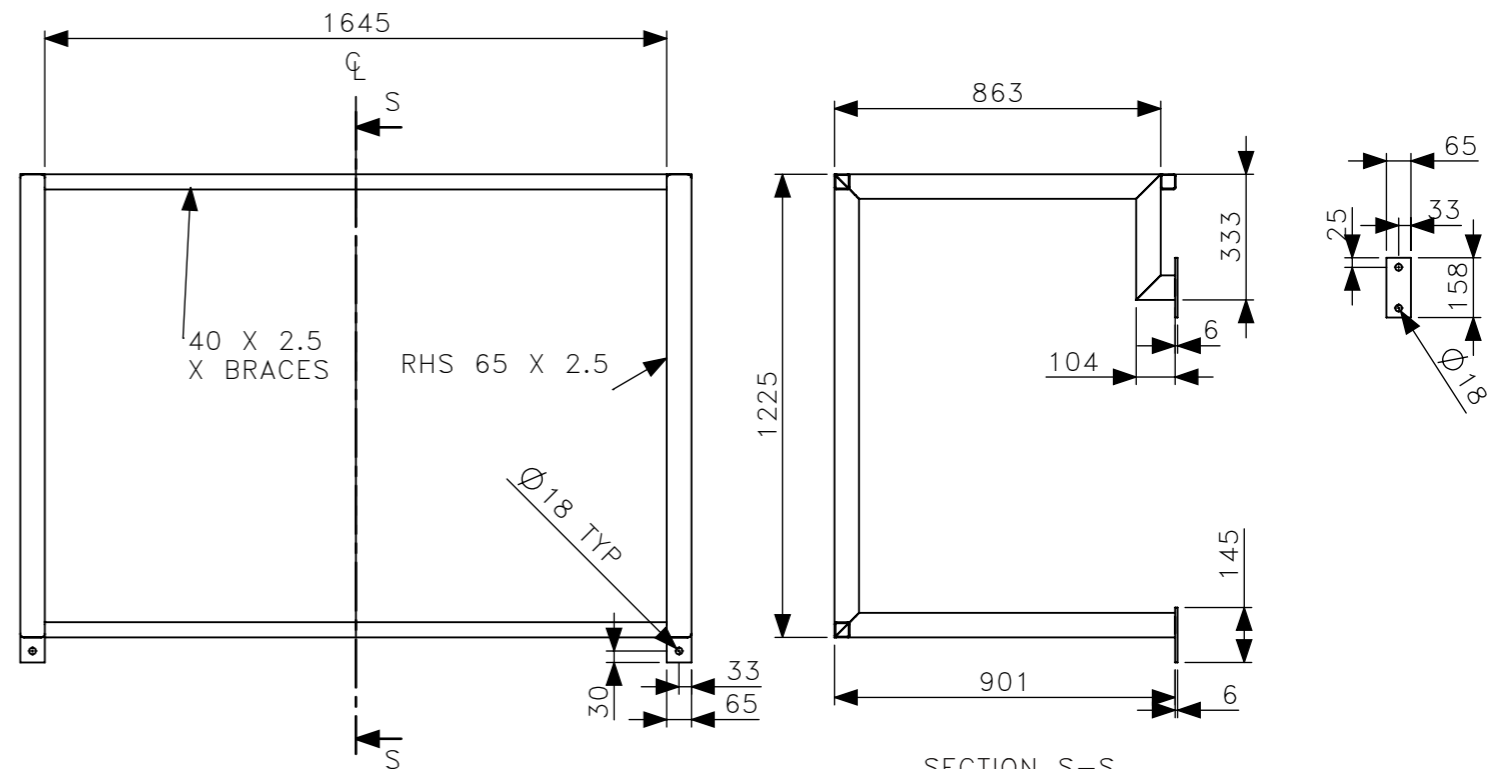


SECTION R-R
SCALE 1 : 10

END FRAME DETAIL
LH SHOWN
RH REQUIRED
1 OF EACH

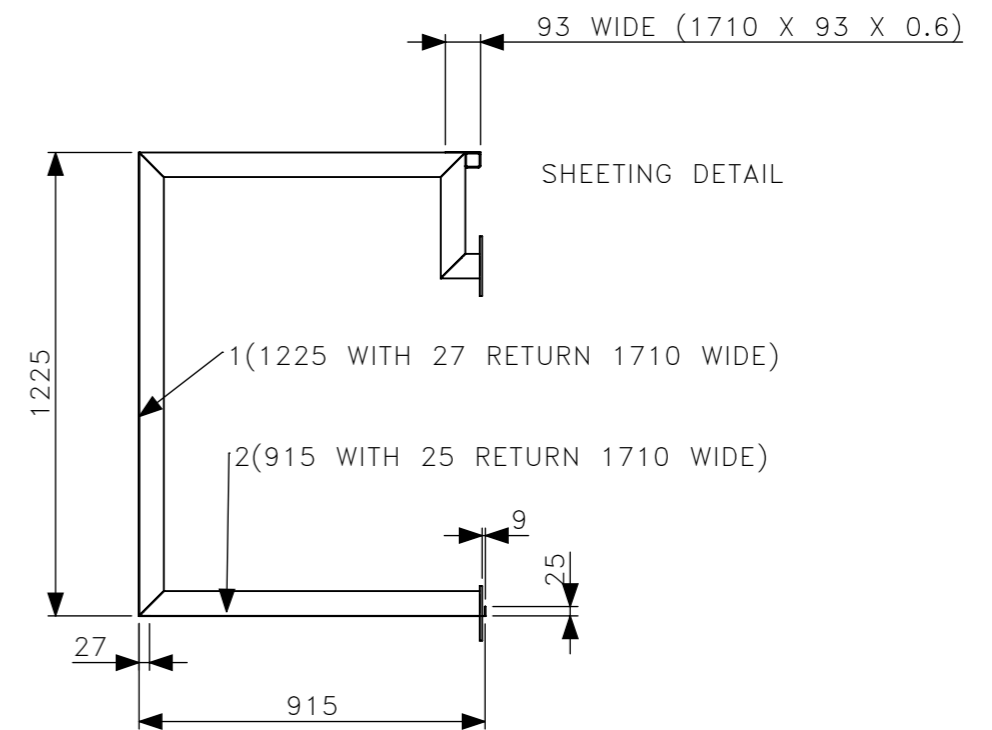


FRAME 4 TOTAL RHS BOTH ENDS=6100



SECTION S-S
SCALE 1 : 20

FIXED FRAME
2 OF REQUIRED



SHEETING DETAIL

APPROVED FOR CONSTRUCTION

PROCESS PATH:

DESCRIPTION: Cascading Conveyor

PART NO: LQ008-Duct

THIS DOCUMENT AND ALL OF ITS CONTENTS ARE COPYRIGHT © BY LINDSTROM ENGINEERING.
NO PART OF THIS DOCUMENT MAY BE REPRODUCED, DISTRIBUTED OR USED FOR ANY
PURPOSE OTHER THAN THAT SPECIFIED IN WRITING BY LINDSTROM ENGINEERING



REV	SHEET	TOTAL MASS:	SCALE	Mod	Drw
A-01	4/6	22043 Kg	2:1	Chk	Chk
				DB	DB

1 2 3 4 5 6 7

A

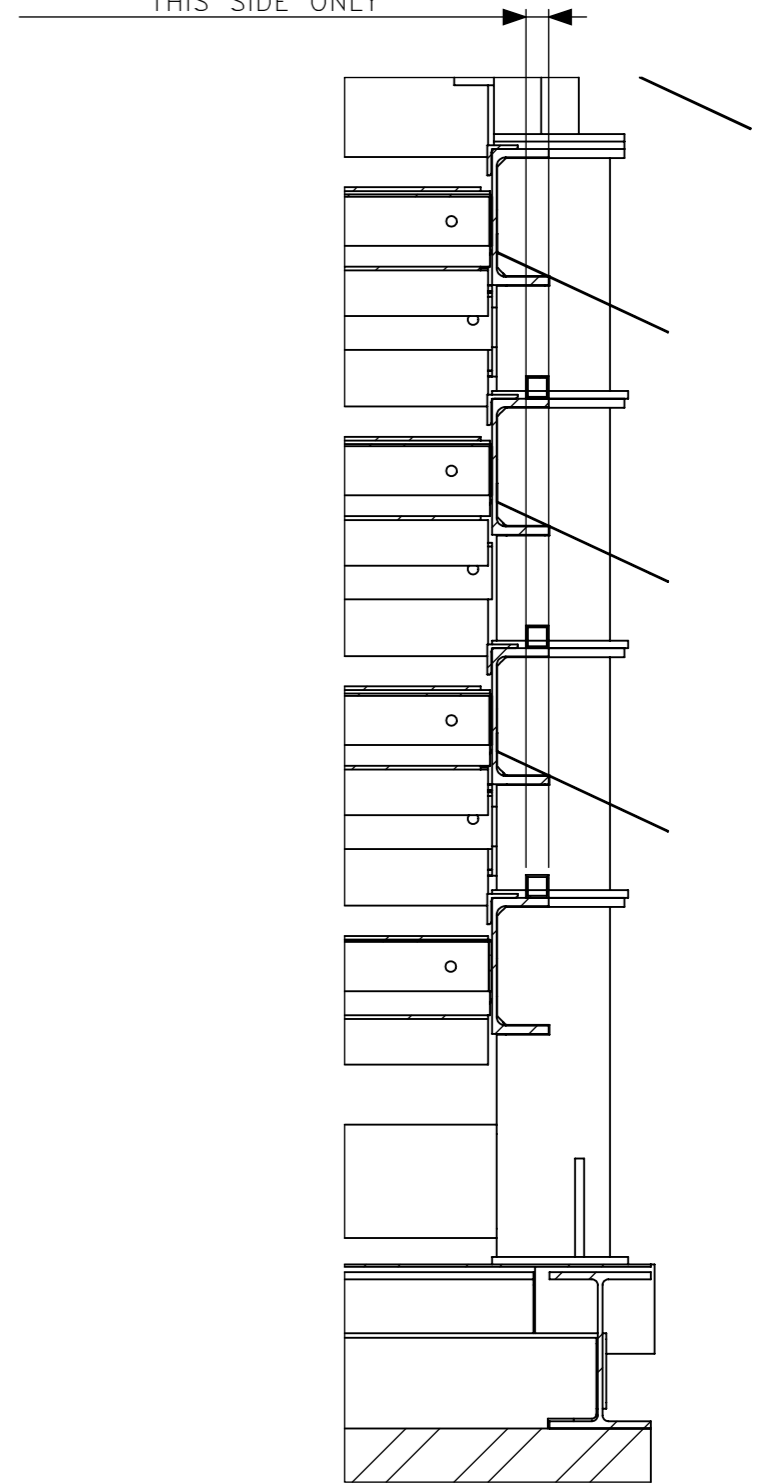
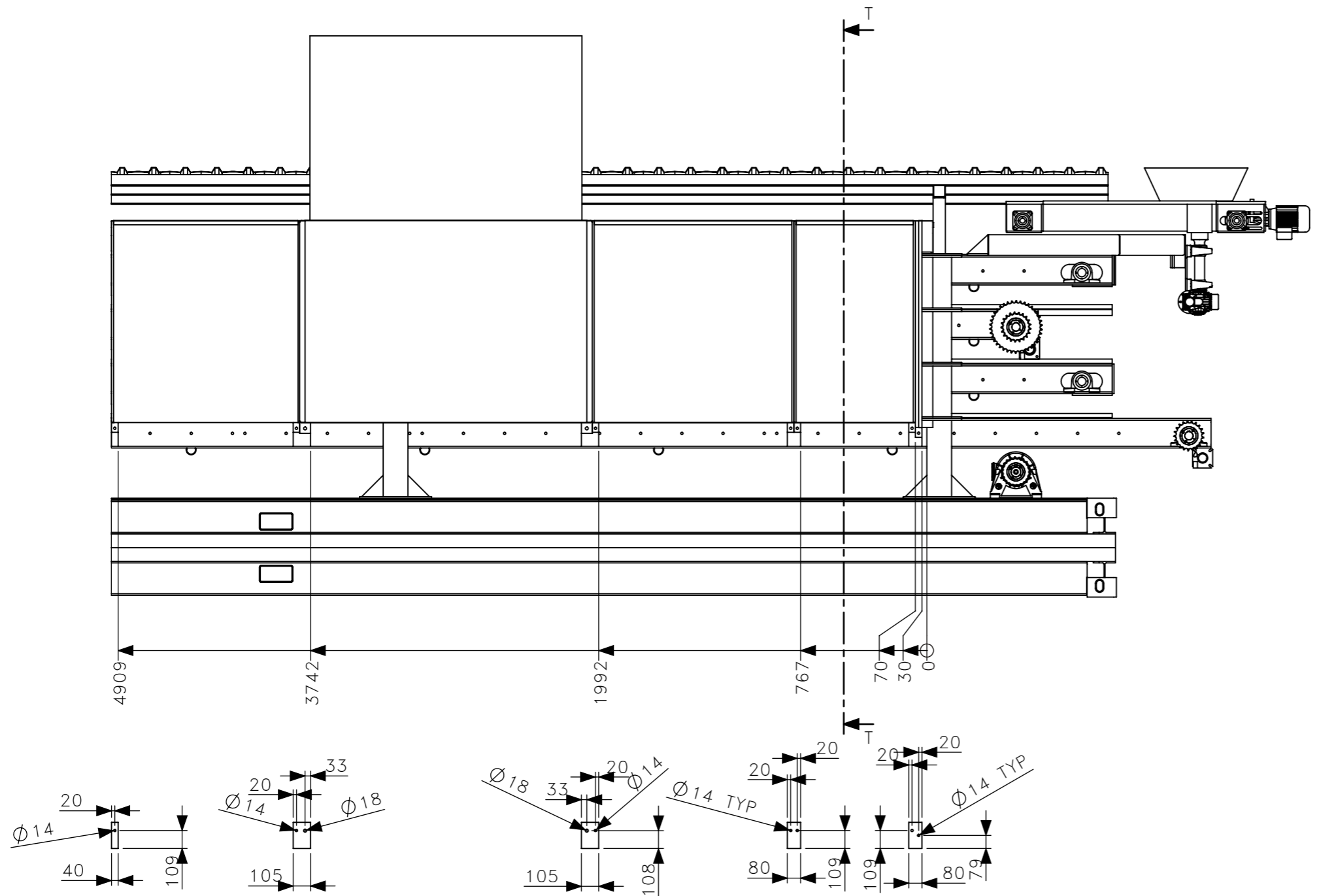
B

C

D

E

30 X 2.5 SHS
 BOLTED TO LOWER THREE LEVELS
 ON OUTER EDGE OF PFC
 FULL LENGTH
 THIS SIDE ONLY

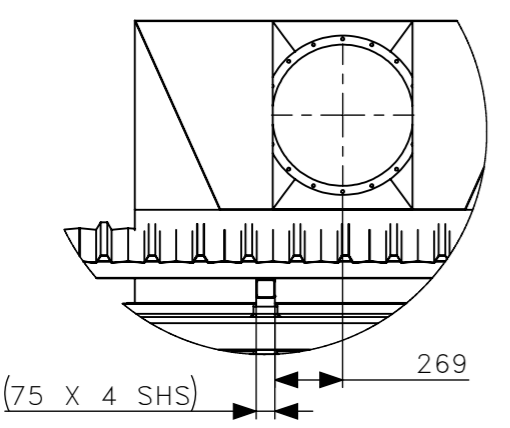
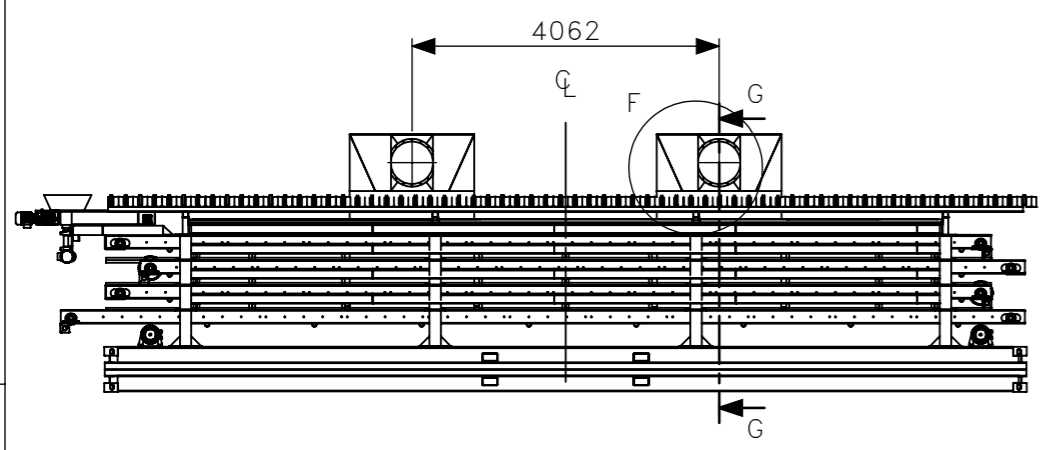


PLATES ARE TRANSLATED BELOW POSITIONS
 ALL PLATES 158 HIGH FILLET WELDED ONTO
 OUTER FLANGE FACE
 OTHER END DETAIL IS MIRROR OF THIS END

SECTION T-T
 SCALE 1 : 10

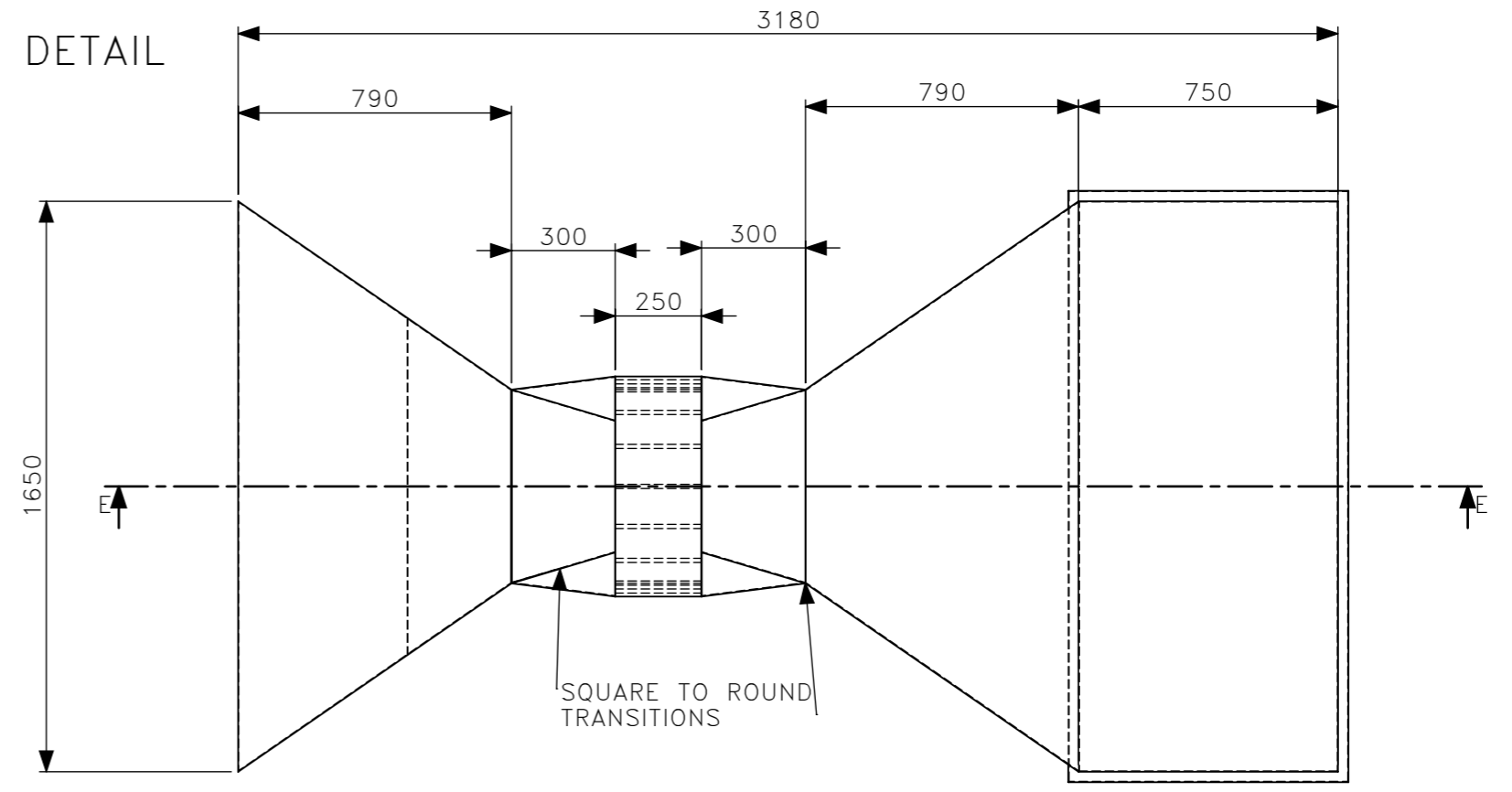
APPROVED FOR CONSTRUCTION		PROCESS PATH:			
DESCRIPTION: Cascading Conveyor					
PART NO: LQ008-Duct					
THIS DOCUMENT AND ALL OF ITS CONTENTS ARE COPYRIGHT © BY LINDSTROM ENGINEERING. NO PART OF THIS DOCUMENT MAY BE REPRODUCED, DISTRIBUTED OR USED FOR ANY PURPOSE OTHER THAN THAT SPECIFIED IN WRITING BY LINDSTROM ENGINEERING					
	REV	SHEET	TOTAL MASS:	SCALE	Mod
	A-01	5/6	22043 Kg	2:1	Chk DB
					Drw Chk DB

PRINTED: Thursday, 5 March 2020



DETAIL F
SCALE 1 : 30

DUCTING DETAIL

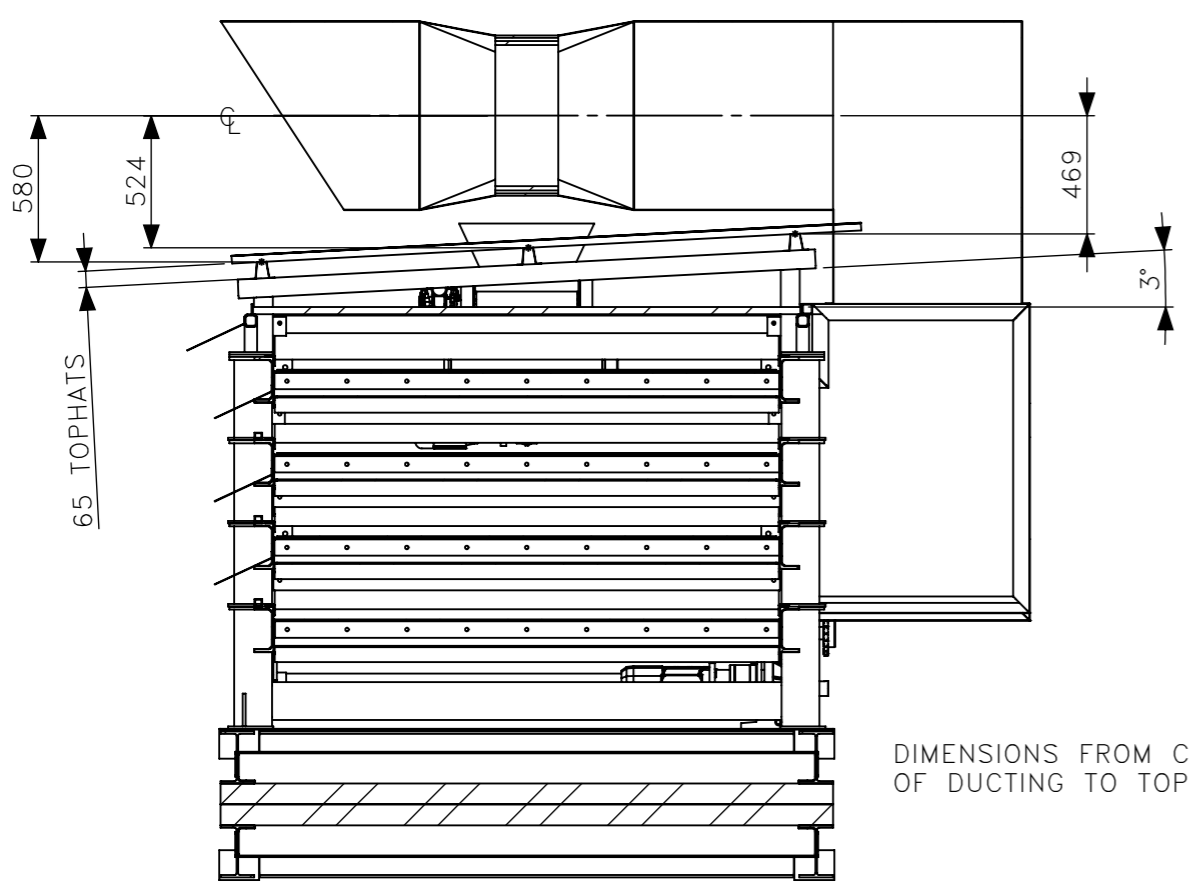


TWO OF TO BE ASSEMBLIES
TO BE SUPPLIED WITH HARDWARE
TO ATTACH TO EXISTING CONVEYOR
REFER TO FAN SPECS FOR FLOW
DETAIL IF NEEDED

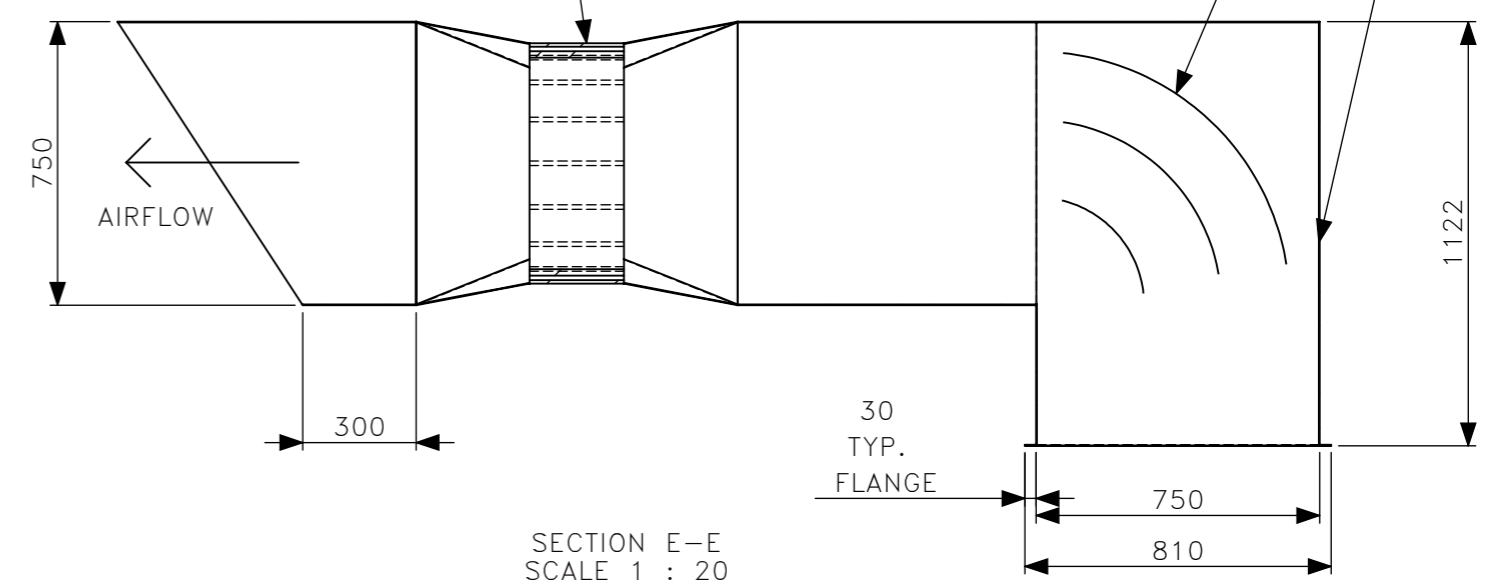
X-BREAK
AND STIFFENER
ON THIS FACE

FANTECH 564
0.75KW MOTOR
WITH VSD NEEDED

TURNING VANES
AS PER MANUFACTURERS SPECIFICATION



SECTION G-G
SCALE 1 : 30



SECTION E-E
SCALE 1 : 20

APPROVED FOR CONSTRUCTION

PROCESS PATH:

DESCRIPTION: Cascading Conveyor

PART NO: LQ008-Duct

THIS DOCUMENT AND ALL OF ITS CONTENTS ARE COPYRIGHT © BY LINDSTROM ENGINEERING.
NO PART OF THIS DOCUMENT MAY BE REPRODUCED, DISTRIBUTED OR USED FOR ANY
PURPOSE OTHER THAN THAT SPECIFIED IN WRITING BY LINDSTROM ENGINEERING



REV	SHEET	TOTAL MASS:	SCALE	Mod	Drw
A-01	6/6	22043 Kg	2:1	Chk	Chk
				DB	DB