



Custom Track Service Projected Life

WILLIAM ADAMS

WHELAN'S GROUP INVESTMENTS

Prepared By: Gary Zarth

Model	336ELH	Job Site	bruthen		Inspection Date	29Feb24
Manufacturer	Caterpillar		<u>Left</u>	<u>Right</u>	Next Inspection Date	--
Serial Number	RZA01023	Track Sag (41.0 mm - 53.0 mm)	--	--	Next Inspection Hours	--
Reference Number	E26	Frame Ext	--	--	<u>Underfoot Conditions</u>	
Hour Meter Reading	12187	Frame Ext %	--	--	Impact	High
Hours Per Week	17.5	Dry Joints	--	--	Abrasion	Low
Total Odometer Reading	--	Track Shoe Width	600.0 mm	600.0 mm	Moisture	High
Forward Odometer	--	Link Roller System	25%	28%	Packing	High
Reverse Odometer	--				Bushing Allowable Wear	Greater
Distance Per Week	--				Link Allowable Wear	Greater

GROUP	RECOMMENDATION	% WORN		PROJECTED SMU AT 100%				PROJECTED DATE AT 100%		PROJECTED DATE AT 120%											
TRACK LINK	Good	10% (33.9 mm)	10% (33.8 mm)	--	--	--	--	--	--	--	--										
BUSHING (EXT)	Good	42% (9.8 mm)	42% (9.9 mm)	--	--	--	--	--	--	--	--										
TRACK SHOE	Monitor	87% (38.3 mm)	86% (38.7 mm)	--	--	--	--	--	--	--	--										
FRONT IDLER	Good	48% (24.0 mm)	48% (24.0 mm)	--	--	--	--	--	--	--	--										
CARRIER ROLLER	Good	24% (154.0 mm)	24% (154.0 mm)	--	--	--	--	--	--	--	--										
FRONT																					
2	Good	24% (154.0 mm)	24% (154.0 mm)	--	--	--	--	--	--	--	--										
TRACK ROLLER	Good	27% (46.8 mm)	30% (46.6 mm)	--	--	--	--	--	--	--	--										
FRONT																					
2												Good	23% (46.9 mm)	27% (46.7 mm)	--	--	--	--	--	--	--
3												Good	23% (47.0 mm)	23% (47.1 mm)	--	--	--	--	--	--	--
4												Good	23% (47.1 mm)	23% (46.9 mm)	--	--	--	--	--	--	--
5												Good	20% (47.2 mm)	23% (47.0 mm)	--	--	--	--	--	--	--
6												Good	23% (46.9 mm)	23% (46.9 mm)	--	--	--	--	--	--	--
7												Good	27% (46.7 mm)	30% (46.5 mm)	--	--	--	--	--	--	--
8												Good	27% (46.8 mm)	30% (46.6 mm)	--	--	--	--	--	--	--
9												Good	39% (45.8 mm)	45% (45.3 mm)	--	--	--	--	--	--	--

General Recommendations

--

PM 2 PERFORM (500 HOURS INTERVAL)

PM Checklist

● 0 ● 1 ● 17 ● 0

Inspection Number	21642683	Customer No	1086200
Serial Number	RZA01023	Customer Name	Whelans group investments
Make	CATERPILLAR	Work Order	2w93619
Model	336E L H	Completed On	24/03/2025 9:53:17 AM
Equipment Family	Large Hydraulic Excavator	Inspector	Lachlan Horne
Asset ID	E26	PDF Generated On	23/03/2025
SMU	9499 Hours	Location	Bruthen, Australia 3885
Coordinates	0, 0, 0		
Technician			

General Info & Comments

● **General info/Comments**

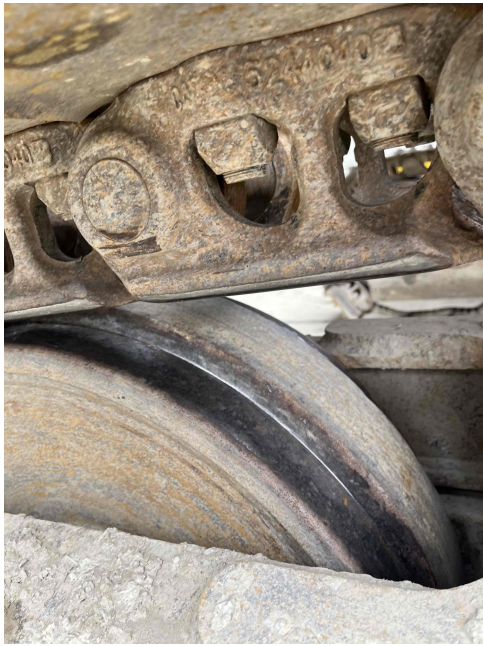
MONITOR

Comments: Complete service
Has accumulator fault
No diesel tank strainer









Green - PM 2 PERFORM (500 HOURS INTERVAL)

● **1.1 CLEAN REFRIGERANT CONDENSER** *NORMAL*

Job : 070
Modifier :
Quantity :
WorkApp :
JobLocation :
JobCond :
CabType :

● **1.2 REPLACE WITH NEW SECONDARY FUEL FILTER** *NORMAL*

Job : 511
Modifier :
Quantity :
WorkApp :
JobLocation :
JobCond :
CabType :
Part Number : 1R0749
Part Quantity : 2.0

● **1.3 CHECK HYDRAULIC PUMP COUPLING FLUID LEVEL** *NORMAL*

Job : 535
Modifier :
Quantity :
WorkApp :
JobLocation :
JobCond :

CabType :

● **1.4 CHECK FINAL DRIVE FLUID LEVEL** *NORMAL*

Job : 535
Modifier :
Quantity :
WorkApp :
JobLocation :
JobCond :
CabType :

● **1.5 TAKE & ANALYZE SOS SAMPLE FROM SWING DRIVE** *NORMAL*

Job : 008
Modifier :
Quantity :
WorkApp :
JobLocation :
JobCond :
CabType :
Part Number : SOS
Part Quantity : 1.0

● **1.6 TAKE & ANALYZE SOS SAMPLE FROM ENGINE OIL** *NORMAL*

Job : 008
Modifier :
Quantity :
WorkApp :
JobLocation :
JobCond :
CabType :
Part Number : SOS
Part Quantity : 1.0

● **1.7 REPLACE WITH NEW ENGINE OIL & FILTER HIGH SPEED** *NORMAL*

Job : 511
Modifier :
Quantity :
WorkApp :
JobLocation :
JobCond :
CabType :
Part Number : DEO-ULS
Part Quantity : 8.4535096595

● **1.8 REPLACE WITH NEW WATER SEPARATOR ELEMENT** *NORMAL*

Job : 511
Modifier :
Quantity :
WorkApp :
JobLocation :
JobCond :
CabType :
Part Number : 3261643
Part Quantity : 1.0

● **1.9 CLEAN FUEL TANK STRAINER**

NORMAL

Job : 070
Modifier :
Quantity :
WorkApp :
JobLocation :
JobCond :
CabType :

● **1.10 CHECK SWING DRIVE FLUID LEVEL**

NORMAL

Job : 535
Modifier :
Quantity :
WorkApp :
JobLocation :
JobCond :
CabType :

● **1.11 TAKE & ANALYZE SOS SAMPLE FROM HYDRAULIC SYSTEM**

NORMAL

Job : 008
Modifier :
Quantity :
WorkApp :
JobLocation :
JobCond :
CabType :
Part Number : SOS
Part Quantity : 1.0

● **1.12 TAKE & ANALYZE SOS SAMPLE FROM FINAL DRIVE**

NORMAL

Job : 008
Modifier :
Quantity :
WorkApp :
JobLocation :

JobCond :
CabType :
Part Number : SOS
Part Quantity : 2.0

● **1.13 LUBRICATE STICK LINKAGE** *NORMAL*

Job : 086
Modifier :
Quantity :
WorkApp :
JobLocation :
JobCond :
CabType :

● **1.14 INSPECT SERPENTINE BELT** *NORMAL*

Job : 040
Modifier :
Quantity :
WorkApp :
JobLocation :
JobCond :
CabType :
Part Number : 3748495
Part Quantity : 1.0

● **1.15 LUBRICATE SWING GEAR/BEARING BEARING** *NORMAL*

Job : 086
Modifier :
Quantity :
WorkApp :
JobLocation :
JobCond :
CabType :

● **1.16 LUBRICATE BOOM LINKAGE** *NORMAL*

Job : 086
Modifier :
Quantity :
WorkApp :
JobLocation :
JobCond :
CabType :

● **1.17 PERFORM PM 2** *NORMAL*

Job : 540
Modifier :
Quantity :
WorkApp :
JobLocation :
JobCond :
CabType :



ENGINE

EQUIP NUM: E26

SERIAL NUMBER: RZA01023

CAT 336E



No Action Required

Interp By: Hon Yin Tham
Interpreted On: 30-Jan-26

T010-56028-0525

SAMPLE SHIP TIME (days) : 5

GIPPSLAND HEAVY DIESEL

RECEIVED DATE: 28-Jan-26

OIL CONDITION SATISFACTORY, CONTINUE SAMPLING AT THE RECOMMENDED INTERVAL.

SAMPLE INFORMATION



Sampled Date	23-Jan-26
Sample Id	T010-56028-0525
Lab Date	28-Jan-26
Meter [Hr]	13634
Comp Meter [Hr]	13634
Meter On Fluid	
Fluid Brand	
Fluid Weight	
Fluid Type	
Fluid Change	U
Filter Change	U
Total Fluid Added	0

PREVIOUS SAMPLE

For additional sample history, go to: [S.O.S WEB](#)

CONDITION / CONTAMINATION

23-Jan-26

VISCOSITY (CENTISTOKES) ASTM D445

V100	Viscosity at 100 C	13.25
------	--------------------	-------

VISCOSITY (CENTISTOKES) ASTM D445

V40	Viscosity at 40 C	95.31
-----	-------------------	-------

VISCOSITY INDEX

VI	Viscosity Index	137
----	-----------------	-----

WEAR LEVELS / ADDITIVES

23-Jan-26

ELEMENTAL ANALYSIS (PPM) ASTM D5185 [OIL] / ASTM D6130 [COOLANT]

Cu	Copper	0
Fe	Iron	6
Cr	Chromium	0
Al	Aluminum	3
Pb	Lead	1
Sn	Tin	2
Si	Silicon	8
Na	Sodium	4
K	Potassium	0
Mo	Molybdenum	41
Ni	Nickel	0
Ag	Silver	0
Ti	Titanium	0
V	Vanadium	0
Mn	Manganese	0
Cd	Cadmium	0
Ca	Calcium	1689
P	Phosphorus	927
Zn	Zinc	1118
Mg	Magnesium	503
Ba	Barium	2
B	Boron	46

INFRARED (UFM) ASTM E2412

ST	Soot	15
OXI	Oxidation	19
SUL	Sulfate By-Product	22
NIT	Nitration	0

WATER - HOTPLATE

W	Water	N
---	-------	---

FUEL DILUTION (SCREEN)

F	Fuel	N
---	------	---

FUEL DILUTION (%) ASTM D7593

PFc	Percent Fuel	3.3
-----	--------------	-----

CLEANLINESS

23-Jan-26

FERROUS DEBRIS

PQI	PQ Index	0
-----	----------	---



FINAL DRIVE REAR LEFT

EQUIP NUM: E26

SERIAL NUMBER: RZA01023

CAT 336E



No Action Required

Interp By: Barry Swindells
Interpreted On: 07-Oct-24

T010-54277-0146

SHOP JOB NUM : 2W92624

SAMPLE SHIP TIME (days) : 8

WHELANS GROUP

INVESTMENTS PTY LTD

WHELANS GROUP

INVESTMENTS - BRUTHEN

QUARRY

LOCATION: BRUTHEN QUARRY

RECEIVED DATE: 03-Oct-24

OIL CONDITION SATISFACTORY, CONTINUE SAMPLING AT THE RECOMMENDED INTERVAL.

SAMPLE INFORMATION



	25-Sep-24	13-Oct-23	23-Jun-23	21-Mar-23
Sampled Date	25-Sep-24	13-Oct-23	23-Jun-23	21-Mar-23
Sample Id	T010-54277-0146	T010-53291-0436	T010-53177-0131	T010-53083-0419
Lab Date	03-Oct-24	18-Oct-23	26-Jun-23	24-Mar-23
Meter [Hr]	12855.0	11956	11515	11093.0
Comp Meter [Hr]		11956		
Meter On Fluid	899.0	1934.0	1493.0	1071.0
Fluid Brand	CAT	CAT	CAT	CAT
Fluid Weight	50	50	50	50
Fluid Type	TDTO	TDTO	TDTO	TDTO
Fluid Change	N	Y	N	N
Filter Change	NA	U	N	NA
Total Fluid Added	0	0	0	0

PREVIOUS SAMPLE

OIL CONDITION SATISFACTORY, CONTINUE SAMPLING AT THE RECOMMENDED INTERVAL.

For additional sample history, go to: [S.O.S WEB](#)

CONDITION / CONTAMINATION

		25-Sep-24	13-Oct-23	23-Jun-23	21-Mar-23
VISCOSITY (CENTISTOKES) ASTM D445					
V40	Viscosity at 40 C	212.7	197.4	198.4	196.7

INFRARED (UFM) ASTM E2412

		25-Sep-24	13-Oct-23	23-Jun-23	21-Mar-23
OXI	Oxidation	4	4	3	3

WATER - HOTPLATE

		25-Sep-24	13-Oct-23	23-Jun-23	21-Mar-23
W	Water	N	N	N	N

WEAR LEVELS / ADDITIVES

		25-Sep-24	13-Oct-23	23-Jun-23	21-Mar-23
ELEMENTAL ANALYSIS (PPM) ASTM D5185 (OIL) / ASTM D6130 (COOLANT)					
Cu	Copper	0	0	0	0
Fe	Iron	169	224	232	191
Cr	Chromium	0	0	1	0
Al	Aluminum	8	6	6	6
Pb	Lead	0	0	0	0
Sn	Tin	0	0	0	0
Si	Silicon	33	23	23	21
Na	Sodium	0	3	3	2
K	Potassium	4	2	3	2
Mo	Molybdenum	1	0	0	0
Ni	Nickel	0	0	0	0
Ag	Silver	0	0	0	0
Ti	Titanium	1	0	0	0
V	Vanadium	0	0	0	0
Mn	Manganese	1	1	1	1
Cd	Cadmium	0	0	0	0
Ca	Calcium	2941	2496	2767	2698
P	Phosphorus	1001	848	939	907
Zn	Zinc	1207	1059	1152	1127
Mg	Magnesium	10	8	8	9
Ba	Barium	0	0	0	0
B	Boron	2	0	1	1

CLEANLINESS

		25-Sep-24	13-Oct-23	23-Jun-23	21-Mar-23
PARTICLE COUNT - ISO 11171:1999 reported per ISO 4406					
ISO	ISO Code Rating	21/18	19/19	23/19	HIGH DEBRIS
6µ	6µ	17178	3637	57672	
14µ	14µ	1306	2606	4938	

FERROUS DEBRIS

		25-Sep-24	13-Oct-23	23-Jun-23	21-Mar-23
PQI	PQ Index	140	256	199	158

VISUAL INSPECTION

		A1	A2	A2	A3
DEP	DEP				
DEP2	DEP2	M-D	MAG	MAG	M-D



FINAL DRIVE REAR

EQUIP NUM: E26

SERIAL NUMBER: RZA01023

RIGHT

CAT 336E



No Action Required

Interp By: Barry Swindells

Interpreted On: 07-Oct-24

T010-54277-0147

SHOP JOB NUM : 2W92624

SAMPLE SHIP TIME (days) : 8

WHELANS GROUP

INVESTMENTS PTY LTD

WHELANS GROUP

INVESTMENTS - BRUTHEN

QUARRY

LOCATION: BRUTHEN QUARRY

RECEIVED DATE: 03-Oct-24

OIL CONDITION SATISFACTORY, CONTINUE SAMPLING AT THE RECOMMENDED INTERVAL.

SAMPLE INFORMATION

	25-Sep-24	13-Oct-23	23-Jun-23	21-Mar-23
Sampled Date	25-Sep-24	13-Oct-23	23-Jun-23	21-Mar-23
Sample Id	T010-54277-0147	T010-53291-0437	T010-53177-0132	T010-53083-0420
Lab Date	03-Oct-24	18-Oct-23	26-Jun-23	24-Mar-23
Meter [Hr]	12855.0	11956	11515	11093.0
Comp Meter [Hr]		11956		
Meter On Fluid	899.0	1934.0	1493.0	1071.0
Fluid Brand	CAT	CAT	CAT	CAT
Fluid Weight	50	50	50	50
Fluid Type	TDTO	TDTO	TDTO	TDTO
Fluid Change	N	Y	N	N
Filter Change	NA	U	N	NA
Total Fluid Added	0	0	0	0

PREVIOUS SAMPLE

OIL CONDITION SATISFACTORY, CONTINUE SAMPLING AT THE RECOMMENDED INTERVAL.

For additional sample history, go to: [S.O.S WEB](#)

CONDITION / CONTAMINATION

		25-Sep-24	13-Oct-23	23-Jun-23	21-Mar-23
VISCOSITY (CENTISTOKES) ASTM D445					
V40	Viscosity at 40 C	208.8	196.8	197.4	196.5
INFRARED (UFM) ASTM E2412					
OXI	Oxidation	3	3	4	3

WEAR LEVELS / ADDITIVES

	25-Sep-24	13-Oct-23	23-Jun-23	21-Mar-23
ELEMENTAL ANALYSIS (PPM) ASTM D5185 [OIL] / ASTM D6130 [COOLANT]				
Cu	Copper	0	0	0
Fe	Iron	107	203	194
Cr	Chromium	0	1	1
Al	Aluminum	4	5	5
Pb	Lead	0	0	0
Sn	Tin	0	0	0
Si	Silicon	18	23	22
Na	Sodium	2	11	12
K	Potassium	3	2	4
Mo	Molybdenum	1	0	0
Ni	Nickel	0	0	0
Ag	Silver	0	0	0
Ti	Titanium	0	0	0
V	Vanadium	0	0	0
Mn	Manganese	1	1	1
Cd	Cadmium	0	0	0
Ca	Calcium	2952	2532	2689
P	Phosphorus	1031	853	913
Zn	Zinc	1220	1071	1128
Mg	Magnesium	10	8	8
Ba	Barium	0	0	0
B	Boron	2	0	1

WATER - HOTPLATE

		25-Sep-24	13-Oct-23	23-Jun-23	21-Mar-23
W	Water	N	N	N	N

CLEANLINESS

		25-Sep-24	13-Oct-23	23-Jun-23	21-Mar-23
PARTICLE COUNT - ISO 11171:1999 reported per ISO 4406					
ISO	ISO Code Rating	22/16	23/18	23/19	HIGH DEBRIS
6µ	6µ	25134	46422	46564	
14µ	14µ	562	2078	2840	

FERROUS DEBRIS

		25-Sep-24	13-Oct-23	23-Jun-23	21-Mar-23
PQI	PQ Index	82	206	172	128

VISUAL INSPECTION

		A1	B2	A2	A3
DEP	DEP				
DEP2	DEP2	M-D	MAG	MAG	M-D



HYDRAULIC SYSTEM

EQUIP NUM: E26

SERIAL NUMBER: RZA01023

CAT 336E



No Action Required

Interp By: Barry Swindells
Interpreted On: 07-Oct-24

T010-54277-0110

SHOP JOB NUM : 2W92624

SAMPLE SHIP TIME (days) : 8

WHELANS GROUP

INVESTMENTS PTY LTD

WHELANS GROUP

INVESTMENTS - BRUTHEN

QUARRY

LOCATION: BRUTHEN QUARRY

RECEIVED DATE: 03-Oct-24

OIL CONDITION SATISFACTORY, CONTINUE SAMPLING AT THE RECOMMENDED INTERVAL.

SAMPLE INFORMATION

	25-Sep-24	13-Oct-23	23-Jun-23	21-Mar-23
Sampled Date	25-Sep-24	13-Oct-23	23-Jun-23	21-Mar-23
Sample Id	T010-54277-0110	T010-53291-0412	T010-53177-0105	T010-53083-0410
Lab Date	03-Oct-24	18-Oct-23	26-Jun-23	24-Mar-23
Meter [Hr]	12855.0	11956	11515	11093.0
Comp Meter [Hr]		11956		
Meter On Fluid	899.0	11956.0	11515.0	
Fluid Brand	CAT	CAT	CAT	CAT
Fluid Weight	10W	10W	10W	10W
Fluid Type	HYDO	HYDO	HYDO	HYDO
Fluid Change	N	Y	N	N
Filter Change	Y	Y	N	N
Total Fluid Added	0	0	0	0

PREVIOUS SAMPLE

OIL CONDITION	SATISFACTORY,	CONTINUE	SAMPLING	AT THE
	RECOMMENDED INTERVAL.			

For additional sample history, go to: [S.O.S WEB](#)

CONDITION / CONTAMINATION

		25-Sep-24	13-Oct-23	23-Jun-23	21-Mar-23
VISCOSITY (CENTISTOKES) ASTM D445					
V40	Viscosity at 40 C	39.77	40.82	40.79	40.70

INFRARED (UFM) ASTM E2412

OXI	Oxidation	3	3	3	3
-----	-----------	---	---	---	---

WATER - HOTPLATE

W	Water	N	N	N	N
---	-------	---	---	---	---

WEAR LEVELS / ADDITIVES

		25-Sep-24	13-Oct-23	23-Jun-23	21-Mar-23
ELEMENTAL ANALYSIS (PPM) ASTM D5185 (OIL) / ASTM D6130 (COOLANT)					
Cu	Copper	0	1	1	1
Fe	Iron	4	5	5	5
Cr	Chromium	3	2	1	1
Al	Aluminum	0	1	1	1
Pb	Lead	0	0	0	0
Sn	Tin	0	0	0	0
Si	Silicon	1	2	2	2
Na	Sodium	0	1	1	1
K	Potassium	2	0	2	1
Mo	Molybdenum	0	0	0	0
Ni	Nickel	0	0	0	0
Ag	Silver	0	0	0	0
Ti	Titanium	0	0	0	0
V	Vanadium	0	0	0	0
Mn	Manganese	0	0	0	0
Cd	Cadmium	0	0	0	0
Ca	Calcium	193	267	334	144
P	Phosphorus	690	617	657	651
Zn	Zinc	884	797	845	843
Mg	Magnesium	4	16	20	1
Ba	Barium	0	0	0	0
B	Boron	1	0	0	0

CLEANLINESS

		25-Sep-24	13-Oct-23	23-Jun-23	21-Mar-23
PARTICLE COUNT - ISO 11171:1999 reported per ISO 4406					
ISO	ISO Code Rating	18/15/10	17/13/10	20/15/10	20/16/12
4µ	4µ	1511	1120	6348	6597
6µ	6µ	161	65	187	595
14µ	14µ	7	5	9	29

FERROUS DEBRIS

PQI	PQ Index	0	0	0	0
-----	----------	---	---	---	---

VISUAL INSPECTION

DEP	DEP	N	A1	N	N
DEP2	DEP2	N	DEB	N	N



HYDRAULIC SYSTEM

EQUIP NUM: E26

SERIAL NUMBER: RZA01023

CAT 336E



No Action Required

Interp By: Barry Swindells
Interpreted On: 27-Mar-25

T010-55085-0115

LABEL#: 250848073

SHOP JOB NUM : 2W93619

SAMPLE SHIP TIME (days) : 2

WHELANS GROUP

INVESTMENTS PTY LTD

WHELANS GROUP

INVESTMENTS - BRUTHEN

QUARRY

LOCATION: bruthen

RECEIVED DATE: 26-Mar-25

OIL CONDITION SATISFACTORY, CONTINUE SAMPLING AT THE RECOMMENDED INTERVAL.

SAMPLE INFORMATION

	24-Mar-25	25-Sep-24	13-Oct-23	23-Jun-23
Sampled Date	24-Mar-25	25-Sep-24	13-Oct-23	23-Jun-23
Sample Id	T010-55085-0115	T010-54277-0110	T010-53291-0412	T010-53177-0105
Lab Date	26-Mar-25	03-Oct-24	18-Oct-23	26-Jun-23
Meter [Hr]	13439	12855.0	11956	11515
Comp Meter [Hr]			11956	
Meter On Fluid		899.0	11956.0	11515.0
Fluid Brand	CAT	CAT	CAT	CAT
Fluid Weight	10W	10W	10W	10W
Fluid Type	HYDO ADVANCED	HYDO	HYDO	HYDO
Fluid Change	N	N	Y	N
Filter Change	N	Y	Y	N
Total Fluid Added	0	0	0	0

PREVIOUS SAMPLE

OIL CONDITION SATISFACTORY, CONTINUE SAMPLING AT THE RECOMMENDED INTERVAL.

For additional sample history, go to: [S.O.S WEB](#)

CONDITION / CONTAMINATION

		24-Mar-25	25-Sep-24	13-Oct-23	23-Jun-23
VISCOSITY (CENTISTOKES) ASTM D445					
V40	Viscosity at 40 C	39.84	39.77	40.82	40.79

INFRARED (UFM) ASTM E2412

		24-Mar-25	25-Sep-24	13-Oct-23	23-Jun-23
OXI	Oxidation	3	3	3	3

WATER - HOTPLATE

		24-Mar-25	25-Sep-24	13-Oct-23	23-Jun-23
W	Water	N	N	N	N

WEAR LEVELS / ADDITIVES

		24-Mar-25	25-Sep-24	13-Oct-23	23-Jun-23
ELEMENTAL ANALYSIS (PPM) ASTM D5185 (OIL) / ASTM D6130 (COOLANT)					
Cu	Copper	0	0	1	1
Fe	Iron	4	4	5	5
Cr	Chromium	3	3	2	1
Al	Aluminum	1	0	1	1
Pb	Lead	0	0	0	0
Sn	Tin	0	0	0	0
Si	Silicon	2	1	2	2
Na	Sodium	1	0	1	1
K	Potassium	1	2	0	2
Mo	Molybdenum	0	0	0	0
Ni	Nickel	0	0	0	0
Ag	Silver	0	0	0	0
Ti	Titanium	0	0	0	0
V	Vanadium	0	0	0	0
Mn	Manganese	0	0	0	0
Cd	Cadmium	0	0	0	0
Ca	Calcium	186	193	267	334
P	Phosphorus	745	690	617	657
Zn	Zinc	978	884	797	845
Mg	Magnesium	2	4	16	20
Ba	Barium	0	0	0	0
B	Boron	0	1	0	0

CLEANLINESS

		24-Mar-25	25-Sep-24	13-Oct-23	23-Jun-23
PARTICLE COUNT - ISO 11171:1999 reported per ISO 4406					
ISO	ISO Code Rating	18/14/10	18/15/10	17/13/10	20/15/10
4µ	4µ	2120	1511	1120	6348
6µ	6µ	145	161	65	187
14µ	14µ	7	7	5	9

FERROUS DEBRIS

		24-Mar-25	25-Sep-24	13-Oct-23	23-Jun-23
PQI	PQ Index	0	0	0	0

VISUAL INSPECTION

		24-Mar-25	25-Sep-24	13-Oct-23	23-Jun-23
DEP	DEP	N	N	A1	N
DEP2	DEP2	N	N	DEB	N

**GIPPSLAND HEAVY DIESEL PTY LTD
JOB CARD**



DATE: 13/3/25

SERVICE PERSON: Jordan

MACHINE: E26 336E

HOURS: 12.951

LOCATION: Brothen

JOB DESCRIPTION: Fuel dilution, Replace injectors

DETAIL OF JOB COMPLETED:

- Found fuel dilution to be leaking injectors at solenoids.
- Replaced all 6 injectors with genuine injectors.
- Replaced engine oil and filter.
- Loaded trim codes with ET and got machine hot.
- Replaced batteries

WORK NOT COMPLETE/ PARTS REQUIRED:

N/A

GIPPSLAND HEAVY DIESEL PTY LTD
JOB CARD



DATE: 23/6/25

SERVICE PERSON: Jordan N

MACHINE: E26

HOURS: 13,101

LOCATION: Bruthen

JOB DESCRIPTION: Replace leaking radiator

DETAIL OF JOB COMPLETED:

- Replaced leaking radiator core.
- Replaced top and bottom hoses.
- Refilled with cat coolant.
- Replaced radiator cap.
- Washed and test drove.

WORK NOT COMPLETE/ PARTS REQUIRED:

N/A