

L26-10
MAY



Lot 976

● 1 ● 1 ● 15 ● 3

Paver and Screed Wear Part Inspection

TA1

Inspection Number	27227529	Customer No	2969536482
Serial Number	GNZ00375	Customer Name	TWIN CITY CONSTRUCTION SERVICES INC
Make	CATERPILLAR	Completed On	2026-02-10 3:15:19 PM
Model	AP655D	Inspector	Ashley Taylor
Equipment Family	Large Asphalt Paver	PDF Generated On	2026-02-10
Asset ID	GNZ00375	SMU	3649 Hours
Location	25846 115 Ave, Parkland County, AB	Coordinates	688.421187970944, -53.5659674881493, -113.756096445169

Inspector 

General Info & Comments

● General info/Comments

NORMAL



Prepare Machine For Inspection

1.1 Document screed model and serial number prefix

WRITE YOUR ANSWER BELOW

1.2 Check with customer for wear life or performance complaints

NORMAL

1.3 Perform Site Safety and Pre-Start Inspection

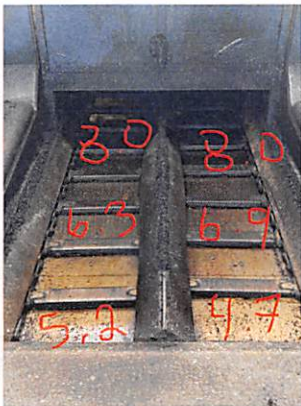
COMPLETE

Tractor Inspection

2.1 Feeder Bed Plates

0-49% WORN

Comments: RH = 8.0+6.3+5.2
LH = 8.0+6.9+4.7
Average = 6.5



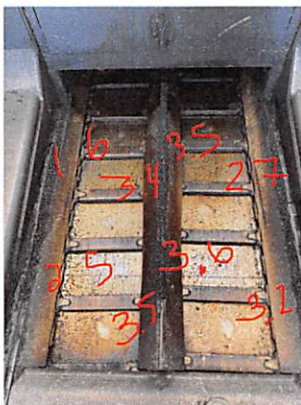
2.1.1 Measured Thickness

65 millimeters

2.2 Feeder Chain Guards

>50% WORN

Comments: RH=1.6+2.5+3.4+3.5
LH=3.5+3.6+3.2+2.7
Average =3



2.2.1 Measured Thickness

3 millimeter

2.3 Feeder Chain

0-49% WORN



2.3.1 Measured distance

846 millimeters

● 2.4 Push Roller / Truck Hitch

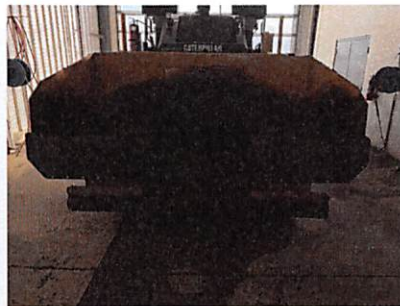
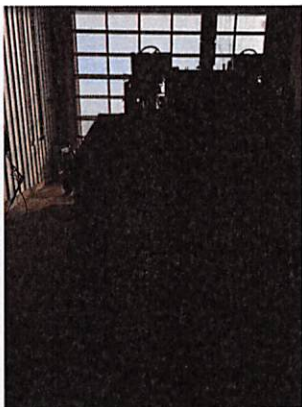
NORMAL



● 2.5 Hopper/Hopper Hinge/Flashing

NORMAL

Comments: LH & RH flashing torn





● **2.6 MTS Belts**

0-49% WORN

Comments: LH=53+53+51+52
RH=51+51+48+48



2.6.1 Measured Thickness

50.8 millimeters

● **2.7 Tires and Rims**

NORMAL

Comments: Tread looks good, no visible cracks or bulges



Image Comment(s):RH

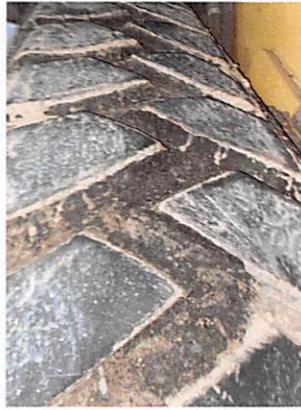


Image Comment(s):LH



Image Comment(s):LH

● 2.8 Feeder Drive Shafts/Bearings/Sprockets/Idlers

NORMAL

● 2.9 Auger Bearings

NORMAL



Image Comment(s):LH

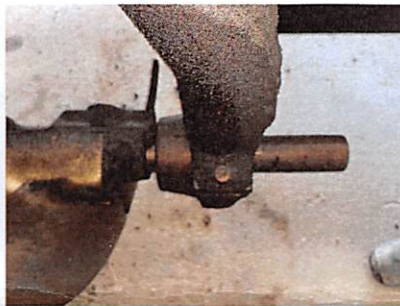


Image Comment(s):LH



Image Comment(s):LH



Image Comment(s):RH

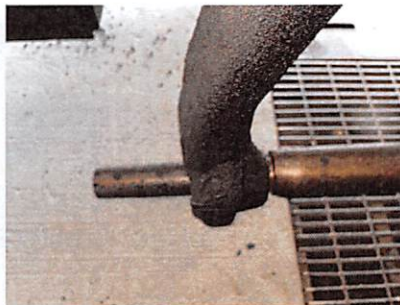


Image Comment(s):RH



Image Comment(s):RH



Image Comment(s):RH



Image Comment(s):LH

● 2.10 Auger Segments

0-49% WORN

Comments: LH=13.3+13.9+14.1
RH=13.3+13.1+14.5

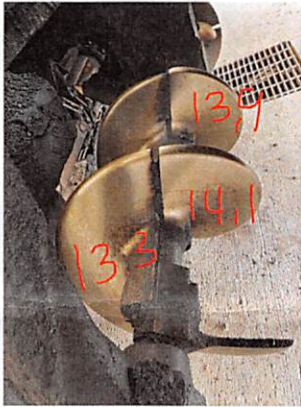


Image Comment(s):LH

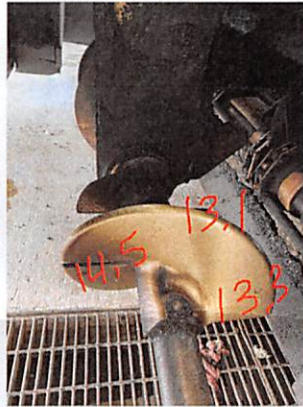


Image Comment(s):RH

2.10.1 Measured Thickness

13.7 millimeters

Screed Inspection

● 3.1 Screed Plates

0-49% WORN

Comments: Across plate LH to RH:
12.3, 12.2, 12.2, 12.1, 11.9, 11.7



3.1.1 Measured Thickness



12.0 millimeters

● 3.2 Screed Tamper Bars

0-49% WORN

3.2.1 Measured Thickness

3.3 Screed Deflector

0-49% WORN

Comments: LH=3.3+3.4
Middle=5.5+5.2+5.0+4.8
RH=2.7+3.0
Average=4.1

3.3.1 Measured Thickness

4.1 millimeters

Prepare Machine

4.1 Take photo of SMU

CONFIRMED

Comments: Confirmed hour meter reading



4.2 Take photo of Serial Number Plate

CONFIRMED



4.3 Verify asset is connected. Take picture/video of flashing blue light

NOTCONNECTED

Comments: Not connected

4.3.1 What is SMU in VisionLink?

3649 Hours