

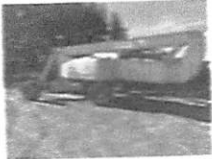


H16-2
 MAY
 Grizzly Inspections Ltd
 PO Box 3381
 Sherwood Park, AB T8H 2T3
 780-718-9127

FolderID: 3839
 FormID: 25590453

Boom Lift

C-5 Chadd Contractors
 58126 Range Rd T2
 Sangudo ALBERTA T0E 2A0



Manlift/Materials Lift
 Completed by: Tristen Huhn on 09/22/2025
 Location: Blue Ridge West Fraser
 Unit Number: AWP146
 Owner: C-5 Chadd Contractors
 Description: Genie Z-135 Boomlift

Make: Genie
 Model: Z-135
 Serial Number: Z13510-1256
 Capacity: 600 (lbs)
 Year of Manufacture: 2010

Priorities Found: ● 2 - High ● 1 - Medium ● 26 - Good

General Info

- 1. Inspection Date
- 2. Machine Hours
- 3. Relevant Code
- 4. Inspection Type

08/21/2025
 5917
 CSA B354.1/B354.2/B354.4

Visual
 Dry MPI

Repairs Required before
 Certification

- 5. Inspection Status

Invoicing Info

- 6. Purchase Order
- 7. Price Code

quoted

Basket

- 8. Basket Posts
- 9. Basket Rails

(P) Pass
 (F) Fail

P9

Crushed member (1x), Bent member (1x). Journeyman welder to cut out bent and crushed sections, replace with OEM equivalent tubing, and reweld using E7018-1-H4 electrodes or ER70S-6 (CWB Certified electrodes only). All welding including preheat and interpass temperatures to follow the requirements of CSA W59

Bent member (1x) (suitable for service, see photos)

Resolved: (9/22/2025) - Weld repairs were completed using E7018-1-H4 electrodes. Inspection following the completion of repairs found no further defects.

(P) Pass
 (P) Pass
 (P) Pass
 (P) Pass

- 10. Basket Floor
- 11. Basket Door/Closure
- 12. Tilt/Swing Cylinder Mounts
- 13. Basket to Boom Attachment

Boom

- 14. Butt Section
- 15. Mid Section(s)
- 16. Tip Section
- 17. Jib Section
- 18. Secondary Boom Sections
- 19. Boom Wear Pads

(P) Pass
 (P) Pass
 (P) Pass
 (P) Pass
 (P) Pass
 (P) Pass

Notice: This inspection covers only the components within the agreed scope. Any out-of-scope observations are for client awareness only and do not constitute a formal inspection or assessment.

- 20. Boom Pins (P) Pass
 - 21. Lift Cylinder(s) (P) Pass
 - 22. Lift Cylinder Pin(s) (P) Pass
 - Base**
 - 23. Wheels (P) Pass
 - 24. Steering Knuckles (P) Pass
 - 25. Undercarriage Frame (P) Pass
 - 26. Outriggers (P) Pass
 - Turret**
 - 27. Turret (P) Pass
 - 28. Turret Mounting Bolts (P) Pass
 - 29. Ring Gear (P) Pass
 - Safety**
 - 30. Capacity Labeled (P) Pass
 - 31. Controls Labeled (P) Pass
 - 32. Make, Model, and Serial # Labeled (P) Pass
 - 33. Structural Safety Bulletins (Y) Yes
- Refer to Genie safety bulletins for potential cylinder leaks.

P32

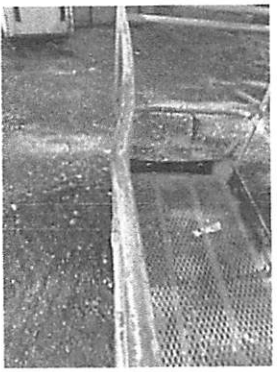
Inspector

34. Certified Inspector

Tristen Huhn



35. Customer Signature



P9.1: Bent top rail



P9.2: Crushed bottom rail



P9.3: Crushed bottom rail (close up)

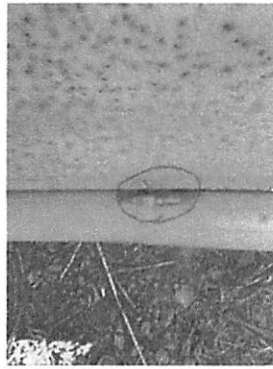


P9.4: Bent top rail (suitable for service)

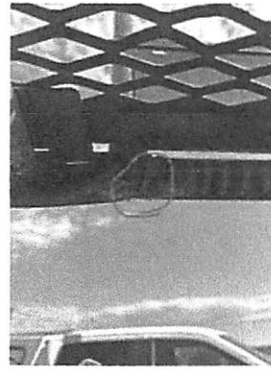
Notice: This inspection covers only the components within the agreed scope. Any out-of-scope observations are for client awareness only and do not constitute a formal inspection or assessment.



P9.5: Repair check: incomplete weld on basket top rail. No fusion.



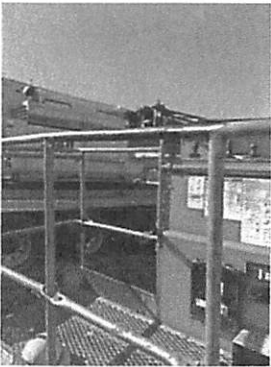
P9.6: Repair check: incomplete weld on basket bottom rail. No fusion.



P9.7: Repair check: incomplete weld on basket bottom rail. No fusion.



P9.8: Repair check: Bent Bottom Rail (suitable for service)



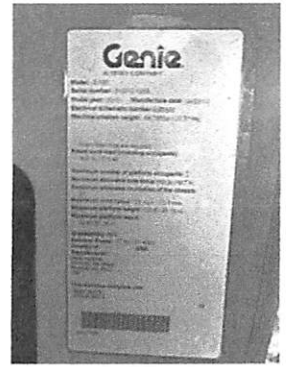
P9.9: Repaired. New tube installed of proper thickness and material.



P9.10: Repair on Bottom Rail.



P9.11: Repair on Top Rail.



P32.12: Serial Tag