

PBS Vehicle Approval

Heavy Vehicle National Law Section 23

Heavy Vehicle (General) National Regulation Section 17

IMPORTANT

- This vehicle must be operated under a Notice or an access permit unless compliant with the Specified PBS Vehicle provision.
- The driver must carry a copy of this PBS Vehicle Approval and an associated access permit or notice and be able to produce readable copies (electronic or hard copy) if requested by Authorised Officers.
- All vehicle units in a combination (prime movers, trailers, dollies, etc.) must be listed on this VA.
- The driver must be able to identify the specific combination being driven within the VA.
- Failure to comply with the above can incur penalties for the operator and driver.

30 October 2024

Ref No: PBS – VA18139 – V120209 – v1A

This PBS Vehicle Approval modifies any previously issued approval for the vehicle(s) listed herein operating under Application Number V120209 and is a modification of VA17828.

Design Approval Holder	Tim Watters SLOANEBUILT TRAILERS PTY LTD	Address	PO Box 3160 Narellan DC NSW 2567
------------------------	--	---------	-------------------------------------

Application Number	V120209	Vehicle	3-axle truck 5-axle dog
Load	Quarry and Bulk; Bin	Length (mm)	≤ 22550
Assessor	Hans Prem	Height (mm)	≤ 4300

Combination Matrix

For each Truck and Trailer, the corresponding drawing reference number, dimension set number and mass table number are listed below. The dimension set number e.g., 'Sheet 4 - Dimension Set #2' indicates the maximum allowable payload heights and/or allowable tyre options for the corresponding Truck and Trailer - refer to the Operating Conditions and Approved Tyre Options sections on this VA.

New VINs added in this VA are listed in bold.

Truck 1	Make	GCM (t)	Truck 2	Make	GCM (t)
6F5000000RA475751	KW	97	6F5000000RA487489	KW	97

Trailer 1	ATM (t)
6B9X5DAHHR3AE6181 6B9X5DAHHR3AE6182	39.5

	Trailer 1
Truck 1	JSC-5AD-001 Sheet 4 - Dimension Set #2 Table 1
Truck 2	JSC-5AD-002 Sheet 1 - Dimension Set #1 Table 1

Table 1
Truck 1, 2 and Trailer 1

Mass Limits	Level 2		Axle Group Masses	Level 2		
				GML	CML	HML
GML (t)	59.5		Steer (t)	6.5	6.5	6.5
CML (t)	61.5		Drive (t)	16.5	17.0	17.0
HML (t)	63.0		Trailer Front (t)	16.5	17.0	17.0
Bridge Assessment	Tier 1		Trailer Rear (t)	20.0	21.0	22.5

Operating conditions

The NHVR approves the vehicles listed herein for the level(s) shown in the “Mass Limits” table with the following operating conditions:

1. The total combination mass must not exceed the limits in the “Mass Limits” table.
2. The axle group masses must not exceed the limits in the “Axle Group Masses” table.
3. If the “Mass Limits” table specifies Tier 2 or Tier 3, a bridge assessment is required.
4. Maximum payload heights measured from the ground must not exceed: (m)

	Truck	Trailer	
		Fifth wheel	Ballrace
Sheet 1 - Dimension Set #1	3.540	3.390	3.540
Sheet 4 - Dimension Set #2	3.540	3.450	3.630

1. 6.5 tonne complying steer axle requirements:
 - an engine that complies with the engine emission standards of Australian Design Rule (ADR) 80/01 (Euro 4) or a later version of ADR 80; and
 - a front underrun protection device (FUPD) that complies with UN ECE Regulation 93 or ADR 84; and
 - a cabin that complies with UN ECE Regulation 29.
2. Concessional Mass Limits (CML) requirements:
 - a National Heavy Vehicle Accreditation Scheme (NHVAS) – Mass Management Accreditation must be in force for all motor vehicles listed on this vehicle approval.
3. Higher Mass Limits (HML) requirements:
 - for tandem axles groups, road friendly suspensions;
 - for tri-axle groups, road friendly suspensions and a National Heavy Vehicle Accreditation Scheme (NHVAS) – Mass Management Accreditation must be in force for all motor vehicles listed on this vehicle approval.
4. If overall length exceeds 22m but does not exceed 30m, a “LONG VEHICLE” sign must be displayed at the rear of the vehicle.
5. When the trailer includes retractable axles, these axles must only be retracted when the vehicle is operating unladen.
6. The dog trailer can be partially loaded only when the truck is fully loaded.
7. The truck can be partially loaded only when the dog trailer empty.
8. If drawbar length exceeds 5m, the outermost surface of the drawbar must be fitted with yellow reflective material that complies with Class C material requirements of United National Economic Commission for Europe Regulation No. 104 Uniform provisions concerning the approval of retro-reflective markings for vehicles of category M, N and O.

Exemptions

Heavy Vehicle National Law Section 24

Heavy Vehicle (General) National Regulation Section 28

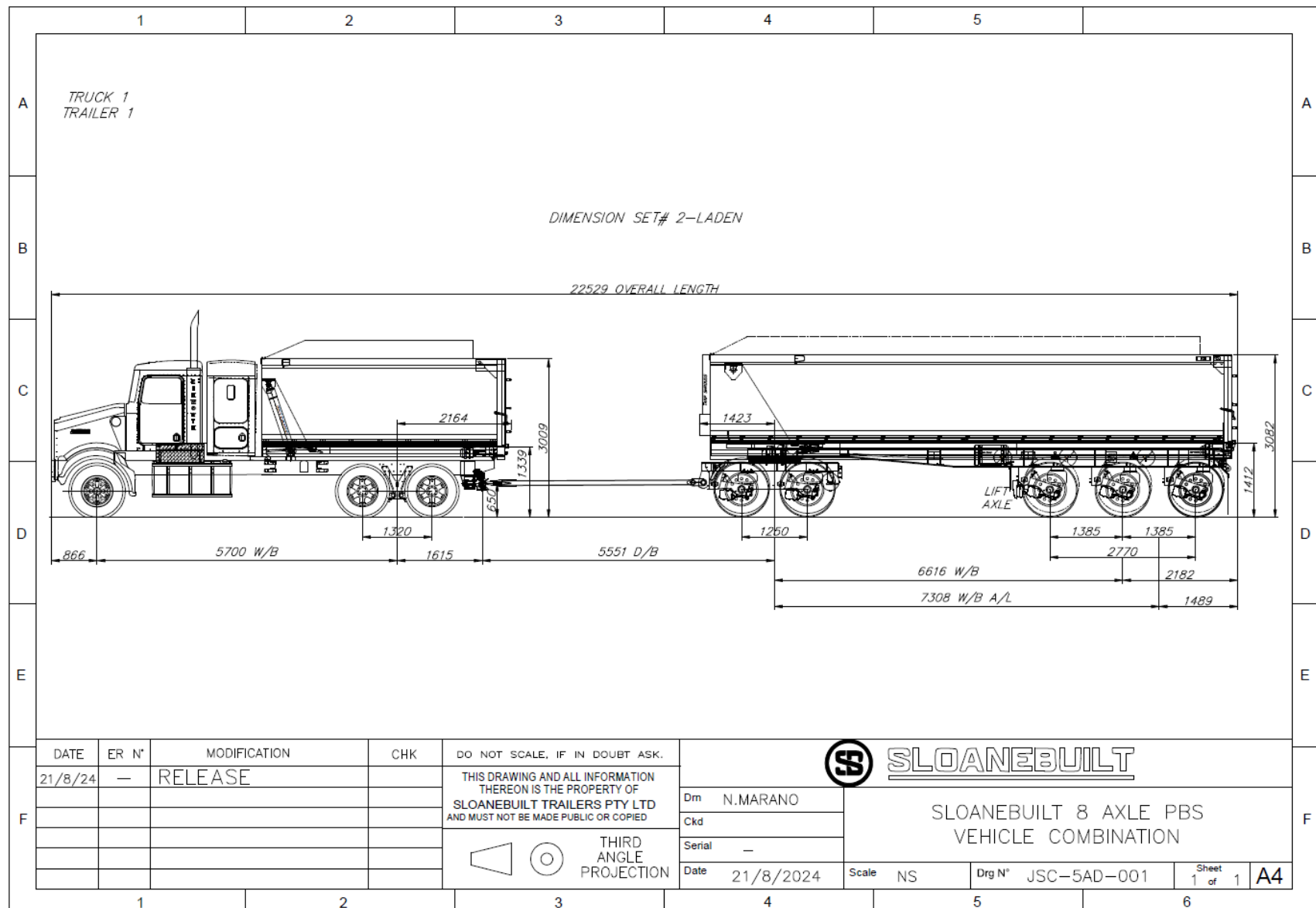
The following table lists exemptions from prescribed vehicle standards that have been granted for the vehicle(s) in this vehicle approval.

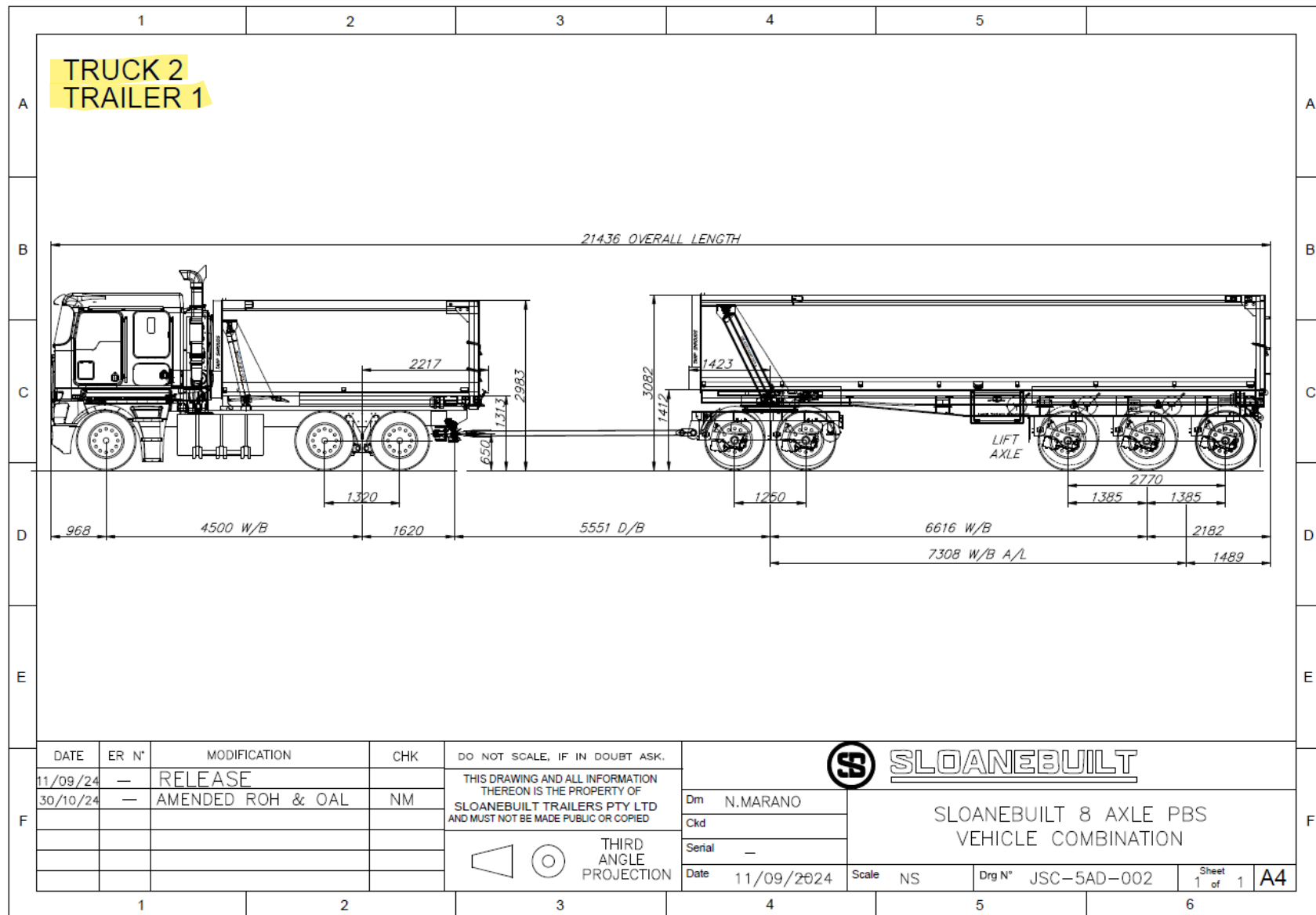
Exemptions	
ADR	Rule 43, Clause 6.2.2 (Drawbar length – Trailers)
HV(MDL)NR	Schedule 6, Section 3 (Length – General) Schedule 6, Section 6 (Length – Trailer drawbars)
HV(VS)NR	NA

ADR Australian Design Rules

HV(MDL)NR *Heavy Vehicle (Mass, Dimension and Loading) National Regulation*

HV(VS)NR *Heavy Vehicle (Vehicle Standards) National Regulation*





Approved tyre options - Drawing Sheets 1-12

Steer –

6.5t axle mass limit

- **11R22.5** (Load Index **149** or higher, single configuration)
- **295/80R22.5** (Load Index **152** or higher, single configuration)
- **385/65R22.5** (Load Index **158** or higher, single configuration)

6.0t axle mass limit

- **11R22.5** (Load Index **146** or higher, single configuration)

Drive

- **11R22.5** (Load Index **142** or higher, dual configuration)
- **295/80R22.5** (Load Index **148** or higher, dual configuration)

Trailer

- **11R22.5** (Load Index **142** or higher, dual configuration)
- **295/80R22.5** (Load Index **148** or higher, dual configuration)

Tyre load index and inflation pressure must be appropriate for the axle mass (inflation pressures must be within legal inflation limits)

Retread tyres are only permitted on the drive, dolly and trailer axles.

Tyres listed herein are specific for PBS application number V120209.

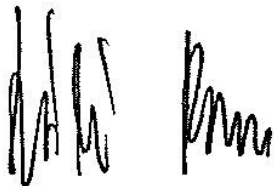
A different list of tyres will apply for other combination types and different PBS application numbers.

Axle spacings for as-built combinations - Truck and Dog (1-2-2-3)

Truck	Trailer	1-2	2-3	3-4	4-5	5-6	6-7	7-8	OAL
1	1	5040	1320	5881	1250	4606	1385	1385	22530
2	1	3840	1320	5886	1250	4606	1385	1385	21437

Declaration

I, Laszlo Bruzsa Chief Engineer, delegate of the National Heavy Vehicle Regulator, approve this PBS Vehicle Approval PBS–V120209 –VA18139.



Laszlo (Les) Bruzsa

Chief Engineer

National Heavy Vehicle Regulator

Dated: 30/10/24

Revision table

N	VA	Vers	Brief description	Date
1	17828	1A	First issue.	25/09/24
2	18139	1A	Adding 1x truck to VA17828 (additional VINs listed in bold).	30/10/24

Important information

The driver must keep in the driver's possession a copy of this Vehicle Approval and be able to produce it for inspection by compliance officers. Penalties can apply.

If changes or modifications are required, these are limited to the specifications contained in the relevant PBS Design Approval and the Application for Design Approval Part A and B. Contact the applicant (see the cover page on this document) for information related to the allowed specifications.

A change of components and/or dimensions must be certified by an approved [PBS Certifier](#) and an updated version of this Vehicle Approval must be obtained. A change of tyres, outside of the list contained on this Vehicle Approval, also requires approval but will not require an inspection by a PBS Certifier.

If VA contains multiple tyre option tables, all tyre selections must be chosen from the same tyre options table. Tyres from different tyre options tables are not interchangeable.

Road access

The PBS Vehicle Approval is not an authorisation to access the road network. You must comply with the relevant Notice or obtain an access permit. To apply for an access permit, visit the [NHVR Portal](#).

For more information on PBS Notices visit:

[National Class 2 PBS Level 1 & 2a Truck and Dog Trailer Authorisation Notice 2021 \(No.1\)](#)

[National Class 2 Performance Based Standards \(High Productivity\) Authorisation Notice](#)

[National Class 2 Performance Based Standards \(Tier 1\) Authorisation Notice 2021](#)

If you add vehicles to your PBS Vehicle Approval, the PBS Vehicle Approval number may change depending on the new vehicles added. If the PBS Vehicle Approval number has changed, and your access permit references a PBS Vehicle Approval number, your access permit will need to be amended to reflect the latest Vehicle Approval number. Note that most truck and dog access permits will not reference a PBS Vehicle Approval number and therefore changes to the Vehicle Approval do not require an update to the access permit. For more information, watch [Adding vehicles to a PBS Vehicle Approval](#) video on our YouTube channel.

For more information, please visit our website at www.nhvr.gov.au or call 13 NHVR (13 64 87).

For queries relating to this document please contact the PBS Operations Team at pbs@nhvr.gov.au.

Manage your PBS Vehicle Approval

Please visit our [website](#) to view a list of available options and associated forms to manage your PBS Vehicle Approval.