

## Performance Based Standards (PBS) Vehicle Approval

Heavy Vehicle National Law Section 23

Heavy Vehicle (General) National Regulation Section 17

This is not an authorisation to access the road network.

You must comply with the relevant Notice or if required, obtain an access permit.

19 October 2022

**Ref No: PBS – V150114 – VA12165 – Tefco Trailers / J S C – v1A**

This PBS Vehicle Approval modifies any previously issued approval for the vehicle(s) listed herein operating under Application Number V150114 .

Applicant details	Stuart Buck Tefco Trailers 24 Alexandra Pl Murarrie QLD 4172	Operator	J S C 5/35 Essington St Mitchell ACT 2911
-------------------	---	----------	---

Application Number	V150114	Vehicle	3-axle truck 4-axle dog
Load	Quarry and Bulk	Length (mm)	≤ 19100
Assessor	Keith Mackinlay	Height (mm)	≤ 4300

## Combination matrix

For each truck and trailer, the corresponding drawing and mass tables are listed. Additional vehicle units are listed in bold.

Truck 1
<b>6F5000000NA474825</b>

Trailer 1
<b>6K9TEF024NM837003</b>

	Trailer 1
Truck 1	NT17354AB Original Blueprint Table 1, 2

**Table 1**  
**Truck 1 and Trailer 1**

Mass Limits	Level 1		Axle Group Masses	Level 1
				GML
GML (t)	50.35		Steer (t)	6.5
CML (t)	NA		Drive (t)	16.5
HML (t)	NA		Trailer Front (t)	15.0
Bridge Assessment	Tier 1		Trailer Rear (t)	15.0
The mass across axle groups is limited to -				
Axle Groups				GML
2 to 4				43.85
3 to 4				27.35

**Table 2**  
**Truck 1 and Trailer 1**

Mass Limits	Level 2		Axle Group Masses	Level 2		
				GML	CML	HML
GML (t)	56.0		Steer (t)	6.5	6.5	6.5
CML (t)	57.5		Drive (t)	16.5	17.0	17.0
HML (t)	57.5		Trailer Front (t)	16.5	17.0	17.0
Bridge Assessment	Tier 1		Trailer Rear (t)	16.5	17.0	17.0

## Operating conditions

The NHVR approves the vehicles listed herein for the level(s) shown in the “Mass Limits” table with the following operating conditions:

1. The total combination mass must not exceed the limits in the “Mass Limits” table.
2. The axle group masses must not exceed the limits in the “Axle Group Masses” table.
3. If the “Mass Limits” table specifies Tier 2 or Tier 3, a bridge assessment is required.
4. Maximum payload heights measured from the ground must not exceed: (m)

	Heaped Payload	Water Level Payload
Truck	3.600	3.400
Trailer		

5. 6.5 tonne complying steer axle requirements:
  - an engine that complies with the engine emission standards of Australian Design Rule (ADR) 80/01 (Euro 4) or a later version of ADR 80; and
  - a front underrun protection device (FUPD) that complies with UN ECE Regulation 93 or ADR 84; and
  - a cabin that complies with UN ECE Regulation 29.
6. Concessional Mass Limits (CML) requirements:
  - a National Heavy Vehicle Accreditation Scheme (NHVAS) – Mass Management Accreditation must be in force for all motor vehicles listed on this vehicle approval.
7. Higher Mass Limits (HML) requirements:
  - for tandem axles groups, road friendly suspensions.
8. When the trailer mass exceeds the truck mass, at least 16 tonnes on the drive axle group is required. This clause does not apply for an unladen vehicle.

## Exemptions

*Heavy Vehicle National Law Section 24*

*Heavy Vehicle (General) National Regulation Section 28*

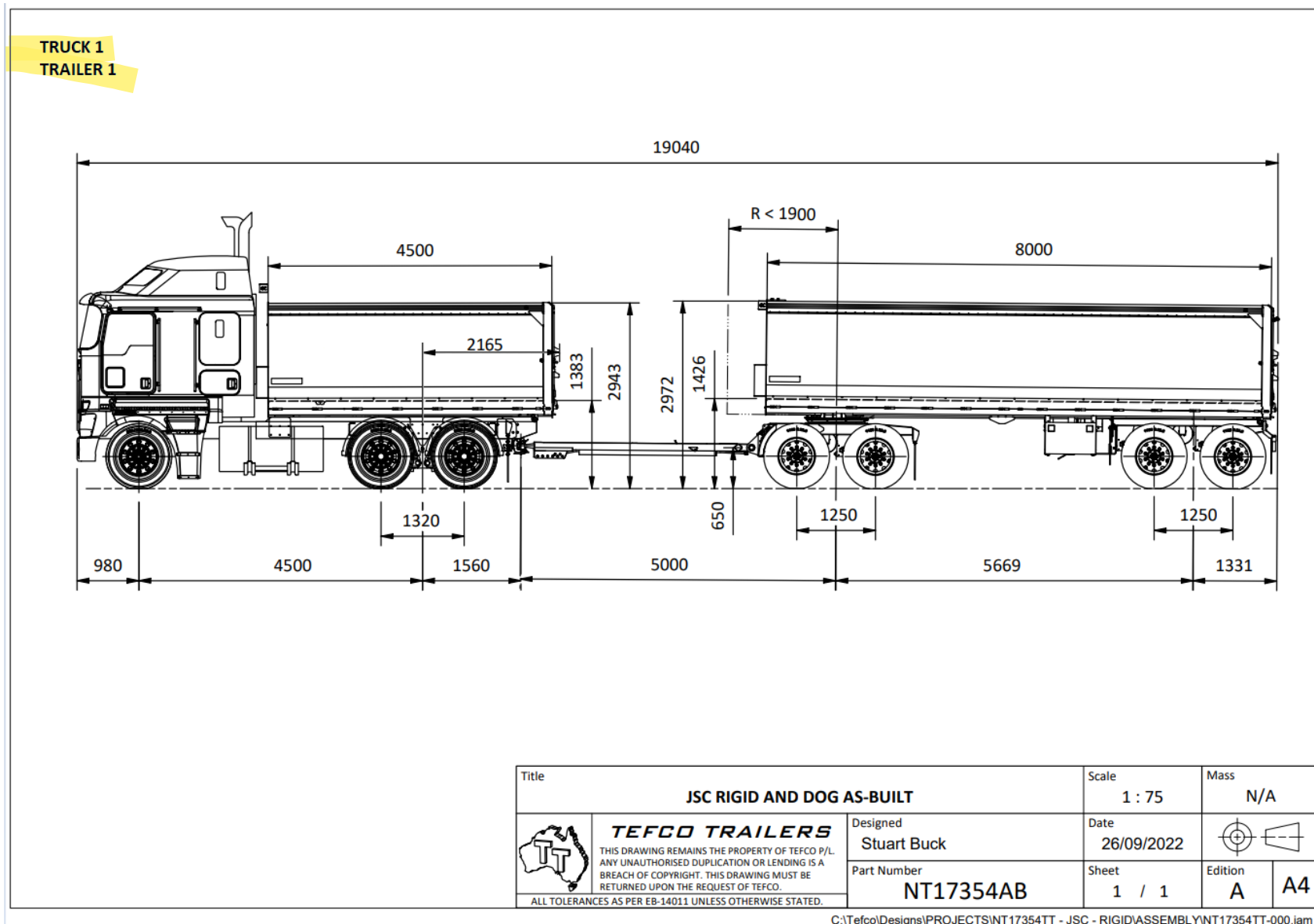
The following table lists exemptions from prescribed vehicle standards that have been granted for the vehicle(s) in this vehicle approval.

Exemptions	
ADR	NA
HV(MDL)NR	Schedule 6, Section 3 (Length – General)
HV(VS)NR	NA

ADR Australian Design Rules

HV(MDL)NR *Heavy Vehicle (Mass, Dimension and Loading) National Regulation*

HV(VS)NR *Heavy Vehicle (Vehicle Standards) National Regulation*



C:\Tefco\Desians\PROJECTS\NT17354TT - JSC - RIGID\ASSEMBLY\NT17354TT-000.iam

## Details of truck(s) or prime mover(s) – Truck 1

Make	Kenworth
Model	K200
VIN(s)	6F5000000NA474825
Engine make/ model/ rating	Cummins X15 Euro V 550 -578hp
Transmission make/ model	Eaton Fuller RTLO20918B
Differential make/ model/ FD ratio	Meritor MT21-165GP, FDR 4.30:1
Suspension make/ model (Steer)	Kenworth Leaf Springs 7.2 t
Suspension make/ model (Drive)	Kenworth Airglide 460
Tyres make/ size/ model (Steer)	295/80R22.5 Bridgestone R154
Tyres make/ size/ model (Drive)	11R22.5 Bridgestone M866
Brakes (Load Proportioning, ABS, ECB, etc.)	EBS
Tow coupling make/ D rating	Conventional automatic pin coupling, D = 320kN
Wheelbase (mm)	4500
Vehicle height (Measured from the ground) (mm)	2943
Number of axles	3
ADR category	NC
GVM (kg)	27,610
GCM (kg)	97,000
Comments/ notes:	

## Details of trailer(s) or dolly(s) – Trailer 1

Type	4-axle Tipping dog trailer
Make	Tefco Trailers Pty Ltd
Model	TEFCO FOUR AXLE DOG TRAILER
VIN(s)	6K9TEF024NM837003
Suspension make/ model	Front: Hendrickson Intraax AAT230 RH 13.5" Rear: Hendrickson Intraax AAT230 RH 19"
Tyres make/ size/ model	11R22.5 Dunlop SP430
Drawbar length (mm)	5000
Coupling make/ D rating	Drawbar Tow eye, D = 314kN
Brakes (Load Proportioning, ABS, ECB, etc.)	EBS
Wheelbase (mm)	5669
Vehicle height (Measured from the ground) (mm)	2972
Number of axles	4
ADR category	TD
ATM (kg)	34,000
Comments/ notes:	

## Approved tyre options – Level 1 and 2 (Formula 1 Only)

### Steer –

- 295/80R22.5, 385/65R22.5, 315/80R22.5, 11R22.5

### Drive –

#### **PBS Reference Tyre TS001 –**

- **11R22.5** Bandag BRL3, Dunlop SP430, SP431, Goodyear LHT, LHTII, Michelin XZA, Haulmax ATT101, ATT102
- **11R22.5** Bandag (Retread) BRL3 (Min tread width 210mm)
- **295/80R22.5** Continental HD Hybrid
- **295/60R22.5** Michelin XDA2+
- **275/70R22.5** Goodyear LHDII,
- **265/70R19.5** Goodyear LHT, RHT
- **255/70R22.5** Goodyear LHTII
- **305/70R22.5** Michelin XZU2T

Or

- **11R22.5** Bridgestone M722, M749, Continental HDR2, Double Coin RLB, Michelin X Multi D, XDE2+
- **11R22.5** Bridgestone M866

### Trailer –

#### **PBS Reference Tyre TS001 –**

- **11R22.5** Bandag BRL3, Bridgestone R109, R168, R187, R285Z, R295Z, Continental HT3, Dunlop SP430, SP431, Firestone FS567, Goodyear LHT, LHTII, Michelin XTE2, XZA, Haulmax ATT101, ATT202
- **11R22.5** Bandag (Retread) BRL3 (Minimum tread width 210 mm)
- **255/70R22.5** Goodyear LHTII
- **265/70R19.5** Goodyear LHT, RHT
- **305/70R22.5** Michelin XZU2T

Or

- **11R22.5** Aeolus HN266, HN06

Tyre load ratings must be appropriate for the axle mass.

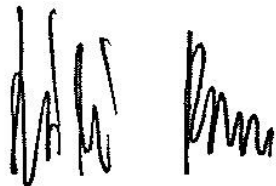
Tyres listed herein are specific for PBS application number V150114.

A different list of tyres will apply for other combination types and different PBS application numbers.



## Declaration

I, Laszlo Bruzsa Chief Engineer, delegate of the National Heavy Vehicle Regulator, approve this PBS Vehicle Approval PBS–V150114 –VA12165.



Laszlo (Les) Bruzsa

Chief Engineer

National Heavy Vehicle Regulator

Dated: 19/10/22

## Revision table

N	VA	Vers	Brief description	Date
1	12165	1A	First issue.	19/10/22

## General access for a specified PBS vehicle

The vehicle combination(s) listed in this PBS Vehicle Approval qualify for general access to the road network under the *specified PBS vehicle* provisions of the Heavy Vehicle National Law. A specified PBS vehicle must comply with all applicable requirements of Schedule 1 of the *Heavy Vehicle (Mass, Dimension and Loading) National Regulation* (HV(MDL)NR).

## Specified PBS vehicle mass limits

1. The maximum allowable mass of a specified PBS vehicle is the lesser of the maximum PBS Level 1 GML stated in this Vehicle Approval and the relevant mass limit prescribed in Part 1, section 2, Schedule 1 of the HV(MDL)NR.
2. The maximum allowable mass of an axle group on a specified PBS vehicle is the lesser of the maximum PBS Level 1 GML axle group mass limit stated in this Vehicle Approval and the axle group mass limit prescribed in “Table 1—Axle mass limits table” in Schedule 1 of the HV(MDL)NR.
3. The maximum allowable mass between any two axles or axle groups on a specified PBS vehicle is the relevant prescribed mass limit in “Table 2—Axle spacing mass limits general table” in Schedule 1 of the HV(MDL)NR.

## Specified PBS vehicle operating conditions

1. When operating as a general access vehicle, a specified PBS vehicle must comply with all operating conditions of its Vehicle Approval that apply at Level 1. This includes payload heights, the drive axle mass requirement, approved tyre options and all operating conditions that do not specify a level of access.
2. The regulation includes a requirement about towing ratios. Loading and unloading must be managed so that the trailer mass does not exceed the mass of the towing vehicle.

## For more information

For more information visit our [PBS vehicle access permit page](#) under Access management.

## Disclaimer

The information on this page is general guidance only and does not constitute legal advice. Consider whether you require Independent legal advice to address your particular circumstances.

## Important information

The driver must keep in the driver's possession a copy of this Vehicle Approval and be able to produce it for inspection by compliance officers. Penalties can apply.

If changes or modifications are required, these are limited to the specifications contained in the relevant PBS Design Approval and the Application for Design Approval Part A and B. Contact the applicant (see the cover page on this document) for information related to the allowed specifications.

A change of components and/or dimensions must be certified by an approved [PBS Certifier](#) and an updated version of this Vehicle Approval must be obtained. A change of tyres, outside of the list contained on this Vehicle Approval, also requires approval but will not require an inspection by a PBS Certifier.

## Road access

The PBS Vehicle Approval is not an authorisation to access the road network. You must comply with the relevant Notice or obtain an access permit. To apply for an access permit, visit the [NHVR Portal](#).

For more information on PBS Notices visit:

[National Class 2 PBS Level 1 & 2a Truck and Dog Trailer Authorisation Notice 2021 \(No.1\)](#)

[National Class 2 Performance Based Standards \(High Productivity\) Authorisation Notice](#)

[National Class 2 Performance Based Standards \(Tier 1\) Authorisation Notice 2021](#)

If you add vehicles to your PBS Vehicle Approval, the PBS Vehicle Approval number may change depending on the new vehicles added. If the PBS Vehicle Approval number has changed, and your access permit references a PBS Vehicle Approval number, your access permit will need to be amended to reflect the latest Vehicle Approval number. Note that most truck and dog access permits will not reference a PBS Vehicle Approval number and therefore changes to the Vehicle Approval do not require an update to the access permit. Watch [Adding vehicles to a PBS Vehicle Approval](#) video on our YouTube channel.

For more information, please visit our website at [www.nhvr.gov.au](http://www.nhvr.gov.au) or call 13 NHVR (13 64 87).

For queries relating to this document please contact the PBS Team at [pbs@nhvr.gov.au](mailto:pbs@nhvr.gov.au).

## Transfer of PBS Vehicle Approval

When applying for an access permit for a PBS vehicle, a PBS Vehicle Approval must be in the name of the company that operates the vehicle on the road.

If/ when a PBS combination is sold, the PBS Vehicle Approval must be transferred across to the new owner.

To transfer a PBS Vehicle Approval to a new owner, use a [PBS Vehicle Approval Transfer Application form](#).