

## Performance-Based Standards (PBS) Vehicle Approval

Heavy Vehicle National Law Section 23

Heavy Vehicle (General) National Regulation Section 17

This is not an authorisation to access the road network.

You must comply with the relevant Notice or if required, obtain an access permit.

25 January 2021

**Ref No: PBS – V180308 – VA8665 – Tefco Trailers / JSC – v1A**

This PBS Vehicle Approval modifies any previously issued approval for the vehicle(s) listed herein operating under Application Number V180308 and is a modification of VA8223.

Applicant details	Stuart Buck Tefco Trailers 24-30 Alexandra Pl Murarrie QLD 4172	Operator	JSC 5/35 Essington St Mitchell ACT 2911
-------------------	--	----------	---

Application Number	V180308	Vehicle	3-axle truck 4-axle dog
Load	Quarry and Bulk	Length (mm)	≤ 19950
Assessor	Rob Di Cristoforo	Height (mm)	≤ 4300

## Combination matrix

For each truck and trailer, the corresponding drawing and dimension set number is listed. The dimension set number (e.g. Original) indicates the maximum allowable payload heights and/or allowable tyre options for the specific combination (refer to payload height operating conditions and approved tyre options). Additional vehicle units are listed in bold.

		6T9T24R06KADY0007	6T9T24R02LADY0004	<b>6T9T24R02LADY0008</b>
		Trailer 1	Trailer 2	Trailer 3
6F5000000KA465742	Truck 1	NT14054AB Original Table 1	NA	NA
6F5000000LA468329	Truck 2	NA	NT15094MA Original Table 1	NA
<b>6F5000000JA463920</b>		NA	NA	NT15094MA Original Table 1

**Table 1**  
**Truck 1 and Trailer 1**  
**Truck 2 and Trailer 2**  
**Truck 3 and Trailer 3**

Mass Limits	Level 1	Level 2		Axle Group Masses	Level 1	Level 2	
					GML	GML	CML HML
GML (t)	50.5	56.0		Steer (t)	6.5	6.5	6.5
CML (t)	NA	57.5		Drive (t)	16.5	16.5	17.0
HML (t)	NA	57.5		Trailer Front (t)	13.75	16.5	17.0
Bridge Assessment	Tier 1			Trailer Rear (t)	13.75	16.5	17.0

## Operating conditions

The NHVR approves the vehicles listed herein for the level(s) shown in the “Mass Limits” table with the following operating conditions:

1. The total combination mass must not exceed the limits in the “Mass Limits” table.
2. The axle group masses must not exceed the limits in the “Axle Group Masses” table.
3. If the “Mass Limits” table specifies Tier 2 or Tier 3, a bridge assessment is required.
4. Maximum bin heights measured from the ground must not exceed: (m)

	Truck	Trailer
1	2.933	2.980
2	2.932	2.980
3	2.375	2.455

5. Maximum payload heights measured from the ground must not exceed: (m)

	Level 1	Level 2
Truck	3.535	3.535
Trailer	3.590	3.590
<b>Drive suspension: Airglide 200/400/460</b>		

6. 6.5 tonne complying steer axle requirements:
  - an engine that complies with the engine emission standards of Australian Design Rule (ADR) 80/01 (Euro 4) or a later version of ADR 80; and
  - a front underrun protection device (FUPD) that complies with UN ECE Regulation 93 or ADR 84; and
  - a cabin that complies with UN ECE Regulation 29.
7. Concessional Mass Limits (CML) requirements:
  - a National Heavy Vehicle Accreditation Scheme (NHVAS) – Mass Management Accreditation must be in force for all motor vehicles listed on this vehicle approval.
8. Higher Mass Limits (HML) requirements:
  - for tandem axles groups, road friendly suspensions.
9. When the trailer mass exceeds the truck mass, at least 16t on the drive axle group is required. This clause does not apply for an unladen vehicle.

## Exemptions

*Heavy Vehicle National Law Section 24*

*Heavy Vehicle (General) National Regulation Section 28*

The following table lists exemptions from prescribed vehicle standards that have been granted for the vehicle(s) in this vehicle approval.

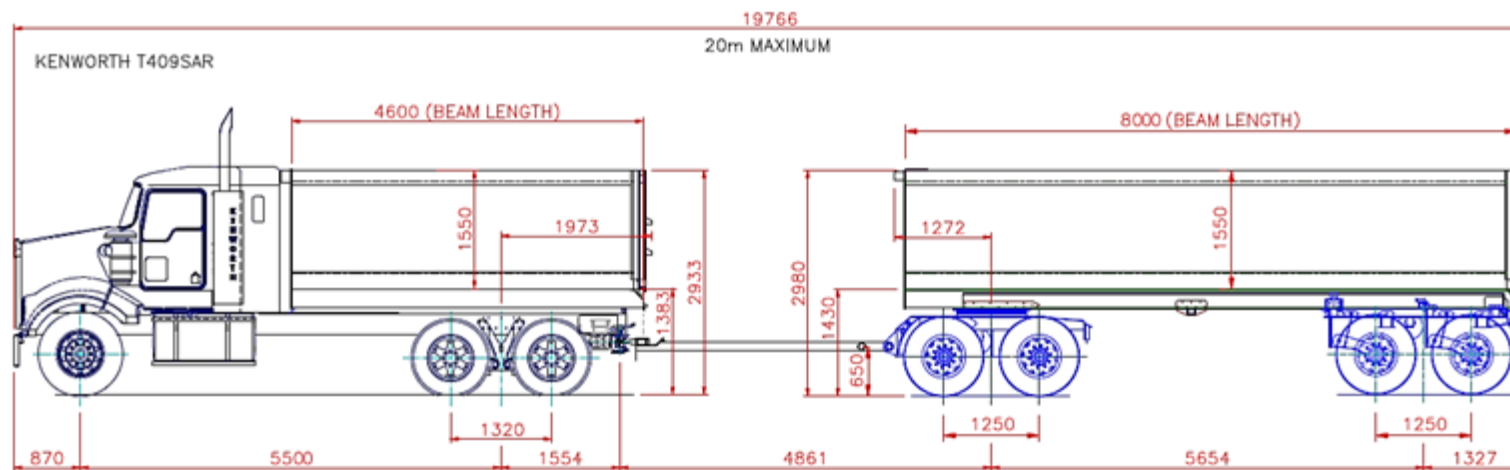
Exemptions	
ADR	NA
HV(MDL)NR	Schedule 6, Section 3 (Length – General)
HV(VS)NR	NA

ADR                      Australian Design Rules


HV(MDL)NR            *Heavy Vehicle (Mass, Dimension and Loading) National Regulation*

HV(VS)NR              *Heavy Vehicle (Vehicle Standards) National Regulation*

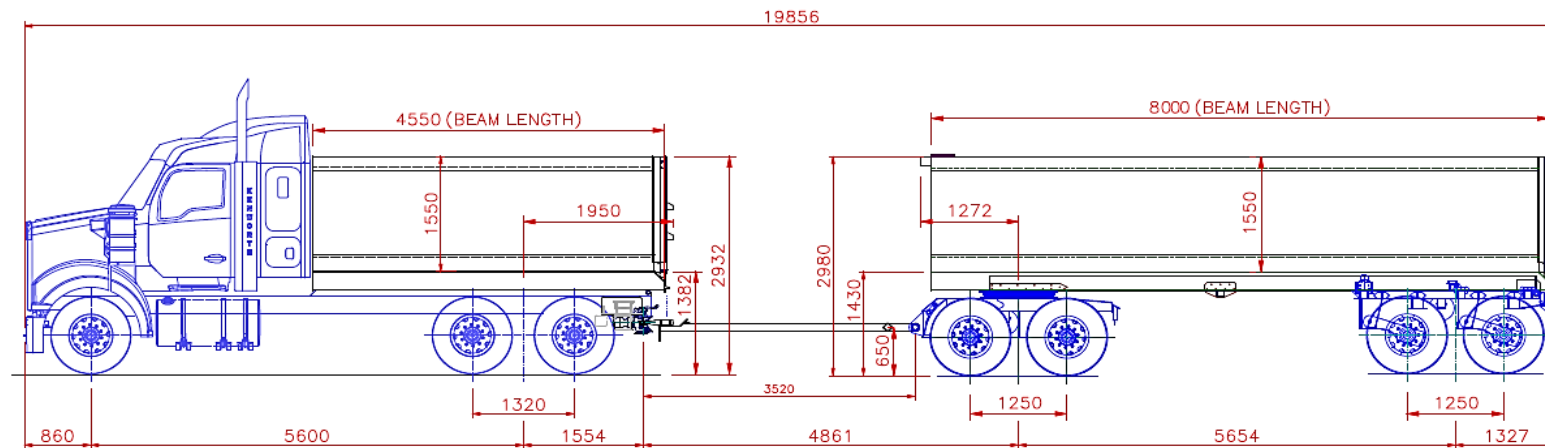
TRUCK 1  
TRAILER 1




REVISIONS		
ITEM	DESCRIPTION	DATE

Designed by <b>LESLIE THANG</b>		Date
T:\DC\Assembly\JSC Concreting\2019\NT14054TTVPBS\NT14054AB.dcd		09/10/2019
 <b>TEFCO PTY LTD</b> THIS DRAWING REMAINS THE PROPERTY OF TEFCO PTY LTD. ANY UNAUTHORISED DUPLICATION OR LENDING IS A BREACH OF COPYRIGHT. THIS DRAWING MUST BE RETURNED UPON THE REQUEST OF TEFCO.		JSC RIGID AND 4 AXLE DOG PBS AS BUILT LAYOUT
NT14054AB	A4	Edition A Sheet 1 / 1
ALL TOLERANCES AS PER EB-14011 UNLESS OTHERWISE STATED.		

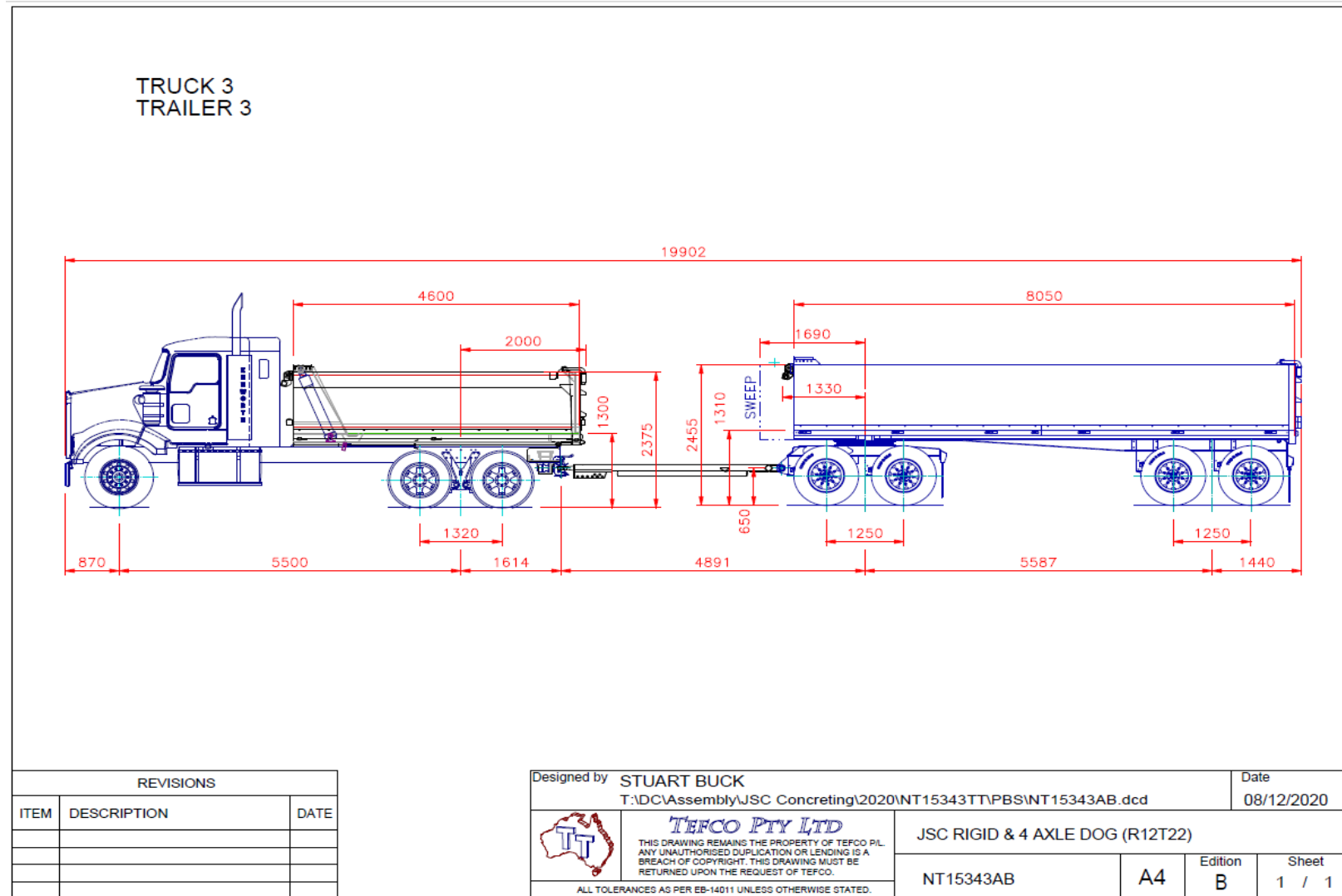
TRUCK 2  
TRAILER 2



REVISIONS		
ITEM	DESCRIPTION	DATE

Designed by <b>LESLIE THANG</b> T:\DC\Assembly\JSC Concreting\2020\NT15094TT\PBS\NT15094MA.dcd		Date 22/09/2020	
 <b>TEFCO PTY LTD</b> <small>THIS DRAWING REMAINS THE PROPERTY OF TEFCO PTY LTD. ANY UNAUTHORISED DUPLICATION OR LENDING IS A BREACH OF COPYRIGHT. THIS DRAWING MUST BE RETURNED UPON THE REQUEST OF TEFCO.</small>		JSC RIGID AND 4 AXLE DOG PROPOSED AS BUILT	
NT15094MA		A4	Edition A
			Sheet 1 / 1

ALL TOLERANCES AS PER FB-14011 UNLESS OTHERWISE STATED.



### Details of truck(s) or prime mover(s) – Truck 1

Make	Kenworth
Model	T409SAR
VIN(s)	6F5000000KA465742
Engine make/ model/ rating	Cummins X15 Euro V 485 - 505
Transmission make/ model	Eaton Fuller FO-20E318B-MXP
Differential make/ model/ FD ratio	Meritor RT46-160GP FDR: 4.30:1
Suspension make/ model (Steer)	Kenworth Leaf Springs 7.2 t
Suspension make/ model (Drive)	Kenworth Airglide 460
Tyres make/ size/ model (Steer)	295/80R22.5 Bridgestone R150
Tyres make/ size/ model (Drive)	11R22.5 Bridgestone M766
Brakes (Load Proportioning, ABS, ECB, etc.)	EBS
Tow coupling make/ D rating	Conventional Tow eye coupling D=320kN
Wheelbase (mm)	5500
Vehicle height (Measured from the ground) (mm)	2933
Number of axles	3
ADR category	NC
GVM (kg)	26,500
GCM (kg)	97,000
Comments/ notes: Truck 1 can only be used in combination with Trailer 1	



### Details of truck(s) or prime mover(s) – Truck 2

Make	Kenworth
Model	T610SAR
VIN(s)	6F5000000LA468329
Engine make/ model/ rating	Cummins X15 Euro V 550 - 578
Transmission make/ model	Eaton Fuller RTLO20918B
Differential make/ model/ FD ratio	Meritor RT46-160GP FDR: 4.30:1
Suspension make/ model (Steer)	Kenworth Leaf Springs 7.2 t
Suspension make/ model (Drive)	Kenworth Airglide 460
Tyres make/ size/ model (Steer)	295/80R22.5 Bridgestone R150
Tyres make/ size/ model (Drive)	11R22.5 Bridgestone M766 (RF2012)
Brakes (Load Proportioning, ABS, ECB, etc.)	EBS
Tow coupling make/ D rating	Conventional Tow eye coupling D=320kN
Wheelbase (mm)	5600
Vehicle height (Measured from the ground) (mm)	2932
Number of axles	3
ADR category	NC
GVM (kg)	26,500
GCM (kg)	97,000
Comments/ notes: Truck 2 can only be used in combination with Trailer 2	

### Details of truck(s) or prime mover(s) – Truck 3

Make	Kenworth
Model	T409SAR
VIN(s)	6F5000000JA463920
Engine make/ model/ rating	Cummins X15 Euro V 485 - 505
Transmission make/ model	Eaton Fuller FO-20E318B-MXP
Differential make/ model/ FD ratio	Meritor RT46-160GP FDR: 4.30:1
Suspension make/ model (Steer)	Kenworth Leaf Springs 7.2 t
Suspension make/ model (Drive)	Kenworth Airglide 460
Tyres make/ size/ model (Steer)	295/80R22.5 Kumho KXS10
Tyres make/ size/ model (Drive)	11R22.5 Kumho KRD01
Brakes (Load Proportioning, ABS, ECB, etc.)	EBS
Tow coupling make/ D rating	Conventional Tow eye coupling D=320kN
Wheelbase (mm)	5500
Vehicle height (Measured from the ground) (mm)	2375
Number of axles	3
ADR category	NC
GVM (kg)	26,500
GCM (kg)	97,000
Comments/ notes: Truck 3 can only be used in combination with Trailer 3	

### Details of trailer(s) or dolly(s) – Trailer 1

Type	4 Axle Dog Trailer with Tipper
Make	Tefco Pty Ltd
Model	Tefco Four Axle Dog Trailer
VIN(s)	6T9T24R06KADY0007
Suspension make/ model	Front: Hendrickson Intraax AAT230 13.5" Rear: Hendrickson Intraax AAT230 19"
Tyres make/ size/ model	11R22.5 Bridgestone R187
Drawbar length (mm)	4861
Coupling make/ D rating	Conventional Tow Eye D = 314kN
Brakes (Load Proportioning, ABS, ECB, etc.)	EBS
Wheelbase (mm)	5654
Vehicle height (Measured from the ground) (mm)	2980
Number of axles	4
ADR category	TD
ATM (kg)	34,000
Comments/ notes: Trailer 1 can only be used in combination with Truck 1	

### Details of trailer(s) or dolly(s) – Trailer 2

Type	4 Axle Dog Trailer with Tipper
Make	Tefco Pty Ltd
Model	Tefco Four Axle Dog Trailer
VIN(s)	6T9T24R02LADY0004
Suspension make/ model	Front: Hendrickson Intraax AAT230 13.5" Rear: Hendrickson Intraax AAT230 19" (RF2008)
Tyres make/ size/ model	11R22.5 Bridgestone R187
Drawbar length (mm)	4861
Coupling make/ D rating	Conventional Tow Eye D = 314kN
Brakes (Load Proportioning, ABS, ECB, etc.)	EBS
Wheelbase (mm)	5654
Vehicle height (Measured from the ground) (mm)	2980
Number of axles	4
ADR category	TD
ATM (kg)	34,000
Comments/ notes: Trailer 2 can only be used in combination with Truck 2	

### Details of trailer(s) or dolly(s) – Trailer 3

Type	4 Axle Dog Trailer with Tipper
Make	Tefco Pty Ltd
Model	Tefco Four Axle Dog Trailer
VIN(s)	6T9T24R02LADY0008
Suspension make/ model	Front: Hendrickson Intraax AAT230 13.5" Rear: Hendrickson Intraax AAT230 19" (RF2008)
Tyres make/ size/ model	11R22.5 Triangle TR668
Drawbar length (mm)	4891
Coupling make/ D rating	Conventional Tow Eye D = 314kN
Brakes (Load Proportioning, ABS, ECB, etc.)	EBS
Wheelbase (mm)	5587
Vehicle height (Measured from the ground) (mm)	2455
Number of axles	4
ADR category	TD
ATM (kg)	34,000
Comments/ notes: Trailer 3 can only be used in combination with Truck 3	

## Approved tyre options – Option 1

### **Steer –**

- non-brand specific 22.5-inch rim diameter

### **Drive –**

- non-brand specific 22.5-inch rim diameter

### **Trailer –**

- **11R22.5** Bridgestone R168, Triangle TR668

Retread or regroove tyres are permitted on the steer and drive axle.

Retread or regroove tyres are permitted on trailer axles, provided they are certified by the manufacturer that its performance is equivalent to a new tyre.

Tyre load ratings must be appropriate for the axle mass.

Tyres listed herein are specific for PBS application number V180308.

A different list of tyres will apply for other combination types and different PBS application numbers.

## Approved tyre options – Option 2

### **Steer –**

- non-brand specific 22.5-inch rim diameter

### **Drive –**

- **295/80R22.5** Dunlop, Goodyear

### **Trailer –**

- non-brand specific 22.5-inch rim diameter

Retread or regroove tyres are permitted on the steer and trailer axles.

Retread or regroove tyres are permitted on drive axles, provided they are certified by the manufacturer that its performance is equivalent to a new tyre.

Tyre load ratings must be appropriate for the axle mass.

Tyres listed herein are specific for PBS application number V180308.

A different list of tyres will apply for other combination types and different PBS application numbers.

## Approved tyre options – Option 3

### Steer –

- non-brand specific 22.5-inch rim diameter

### Drive and Trailer –

DRIVE TYRES	TRAILING UNIT TYRES																				
	Aeolus ADC53 11R22.5	Aeolus HN08 11R22.5	Aeolus HN266 11R22.5	Boto BT168 11R22.5	Boto BT370 11R22.5	Bridgestone 11R22.5	Bridgestone 255/70R22.5	Chao Yang CR926D 11R22.5	Chao Yang CR960A 11R22.5	Continental HSC1 11R22.5	Continental HT3 11R22.5	Continental HTR 11R22.5	Dunlop 11R22.5	Firestone T559 11R22.5	GT Radial GT276 11R22.5	General Tire RA 11R22.5	Giti GT276 11R22.5	Goodride AS678 11R22.5	Goodride CB972 11R22.5	Goodride CR926D 11R22.5	Goodride CR960A 11R22.5
Aeolus ADC53 11R22.5																					
Aeolus HN08 11R22.5																					
Aeolus HN266 11R22.5																					
Boto BT168 11R22.5																					
Bridgestone 11R22.5																					
Bridgestone 295/80R22.5																					
Chao Yang CM333 11R22.5																					
Continental HD HYBRID 295/80R22.5																					
Continental HDC1 295/80R22.5																					
Continental HDR2+ 11R22.5																					
Continental HSC1 11R22.5																					
Dunlop 11R22.5																					
GT Radial GSR225 295/80R22.5																					
GT Radial GT276 11R22.5																					
General Tire RA 11R22.5																					
Giti GSR225 295/80R22.5																					
Giti GT276 11R22.5																					
Goodride CM958 295/80R22.5																					
Goodride MD738 11R22.5																					
Goodyear 11R22.5																					
Hankook AH11 295/80R22.5																					

A cell that is denoted by a ‘•’ indicates a permissible combination of drive and trailing unit tyres. Cells that are blank are not permitted.

Retread or regroove tyres are permitted on the steer axle.

Retread or regroove tyres are permitted on drive and trailer axles, provided they are certified by the manufacturer that its performance is equivalent to a new tyre.

Tyre load ratings must be appropriate for the axle mass.

Tyres listed herein are specific for PBS application number V180308.

A different list of tyres will apply for other combination types and different PBS application numbers.

## Approved tyre options – Option 3

### Steer –

- non-brand specific 22.5-inch rim diameter

### Drive and Trailer –

DRIVE TYRES	TRAILING UNIT TYRES																							
	Goodyear 11R22.5	Hankook AH22 11R22.5	Hankook AM06 11R22.5	Hankook TH22 11R22.5	Hankook TH22 255/70R22.5	Hankook TM22 11R22.5	Haulmax ATT101 11R22.5	Haulmax ATT103 11R22.5	Haulmax ATT202 11R22.5	Hilo 100 11R22.5	Hilo 660 11R22.5	Jinyu JY601 11R22.5	Kumho KRT03 11R22.5	Loadrunner LR116R 255/70R22.5	Michelin 11R22.5	Michelin 255/70R22.5	NiPon AZ126 11R22.5	O'Green AG168 11R22.5	Sportrak BVS98 11R22.5	Triangle TR666 11R22.5	Triangle TRS01 11R22.5	Westlake CR926D 11R22.5	Westlake MD738 11R22.5	Yokohama RY588 11R22.5
Aeolus ADC53 11R22.5																								
Aeolus HN08 11R22.5																								
Aeolus HN266 11R22.5	•			•			•		•						•	•		•						
Boto BT168 11R22.5	•			•			•		•						•	•		•						
Bridgestone 11R22.5	•			•			•		•	•					•	•		•			•		•	•
Bridgestone 295/80R22.5	•	•		•	•		•	•	•	•		•		•	•	•	•	•	•	•	•	•	•	•
Chao Yang CM333 11R22.5	•			•			•		•						•	•		•						
Continental HD HYBRID 295/80R22.5	•			•			•		•						•	•		•			•			•
Continental HDC1 295/80R22.5	•			•			•		•						•	•		•						
Continental HDR2+ 11R22.5				•			•		•						•	•		•						
Continental HSC1 11R22.5				•			•		•						•	•		•						
Dunlop 11R22.5	•			•			•		•						•	•		•		•				•
GT Radial GSR225 295/80R22.5				•			•											•						
GT Radial GT276 11R22.5				•			•								•	•		•						
General Tire RA 11R22.5															•	•		•						
GiTi GSR225 295/80R22.5																		•						
GiTi GT276 11R22.5				•			•								•	•		•						
Goodride CM958 295/80R22.5															•	•		•						
Goodride MD738 11R22.5	•			•			•		•						•	•		•						•
Goodyear 11R22.5	•			•			•		•						•	•		•		•				•
Hankook AH11 295/80R22.5															•	•		•						

A cell that is denoted by a '•' indicates a permissible combination of drive and trailing unit tyres. Cells that are blank are not permitted.

Retread or regroove tyres are permitted on the steer axle.

Retread or regroove tyres are permitted on drive and trailer axles, provided they are certified by the manufacturer that its performance is equivalent to a new tyre.

Tyre load ratings must be appropriate for the axle mass.

Tyres listed herein are specific for PBS application number V180308.

A different list of tyres will apply for other combination types and different PBS application numbers.



## Approved tyre options – Option 3

### Steer –

- non-brand specific 22.5-inch rim diameter

### Drive and Trailer –

DRIVE TYRES	TRAILING UNIT TYRES															
	Aeolus HN06 11R22.5	Aeolus HN08 11R22.5	Aeolus HN266 11R22.5	Boto BT168 11R22.5	Boto BT370 11R22.5	Bridgestone 11R22.5	Bridgestone 255/70R22.5	Chao Yang CR926D 11R22.5	Chao Yang CR960A 11R22.5	Continental HSC1 11R22.5	Continental HT3 11R22.5	Continental HTR 11R22.5	Dunlop 11R22.5	Firestone T559 11R22.5	GT Radial GT276 11R22.5	General Tire RA 11R22.5
Hankook AH22 11R22.5					•	•	•				•			•		
Hankook AH22+ 295/80R22.5					•	•	•				•	•	•			•
Hankook AH22R 295/80R22.5					•	•	•				•		•			
Hankook AH33 295/80R22.5					•	•	•				•	•	•			•
Hankook AL10 295/80R22.5	•		•		•	•	•		•		•	•	•	•		•
Hankook AM06 295/80R22.5					•	•	•				•		•			
Hankook DL10 295/80R22.5					•	•	•		•		•	•	•			•
Hankook DM09 11R22.5					•	•	•				•		•			
Hankook Z35A 11R22.5						•	•						•			
Haulmax ATT101 11R22.5					•	•	•				•	•	•			•
Haulmax ATT202 11R22.5					•	•	•				•	•	•			•
Haulmax ATT307 11R22.5					•	•	•				•			•		
Jinyu JY601 11R22.5					•	•	•				•			•		
Michelin 11R22.5			•		•	•	•		•		•	•	•	•		•
Michelin 295/80R22.5	•		•	•	•	•	•	•	•	•	•	•	•	•	•	•
NiPon AZ126 11R22.5																
O'Green AG677 11R22.5					•	•	•				•	•	•			•
Triangle TR666 11R22.5					•	•	•				•			•		
Triangle TR668 11R22.5	•	•	•	•	•	•	•	•	•	•	•	•	•	•	•	•
Triangle TR688 11R22.5	•	•	•	•	•	•	•	•	•	•	•	•	•	•	•	•
Triangle TRS01 11R22.5					•	•	•				•	•	•			•
Westlake AS678 11R22.5																
Westlake MD738 11R22.5					•	•	•				•			•		

A cell that is denoted by a '•' indicates a permissible combination of drive and trailing unit tyres. Cells that are blank are not permitted.

Retread or regroove tyres are permitted on the steer axle.

Retread or regroove tyres are permitted on drive and trailer axles, provided they are certified by the manufacturer that its performance is equivalent to a new tyre.

Tyre load ratings must be appropriate for the axle mass.

Tyres listed herein are specific for PBS application number V180308.

A different list of tyres will apply for other combination types and different PBS application numbers.

## Approved tyre options – Option 3

### Steer –

- non-brand specific 22.5-inch rim diameter

### Drive and Trailer –

	TRAILING UNIT TYRES																	
	Goodyear 11R22.5	Hankook AH22 11R22.5	Hankook AM06 11R22.5	Hankook TH22 11R22.5	Hankook TH22 255/70R22.5	Hankook TM22 11R22.5	Haulmax ATT101 11R22.5	Haulmax ATT103 11R22.5	Haulmax ATT202 11R22.5	Hilo 100 11R22.5	Hilo 660 11R22.5	Jinyu JY601 11R22.5	Kumho KRT03 11R22.5	Loadrunner LR116R 255/70R22.5	Michelin 11R22.5	Michelin 255/70R22.5	NiPon AZ126 11R22.5	O'Green AG168 11R22.5
DRIVE TYRES																		
	Hankook AH22 11R22.5																	
	Hankook AH22+ 295/80R22.5	•																
	Hankook AH22R 295/80R22.5	•																
	Hankook AH33 295/80R22.5	•																
	Hankook AL10 295/80R22.5	•																
	Hankook AM06 295/80R22.5	•																
	Hankook DL10 295/80R22.5	•																
	Hankook DM09 11R22.5	•																
	Hankook Z35A 11R22.5																	
	Haulmax ATT101 11R22.5	•																
	Haulmax ATT202 11R22.5	•																
	Haulmax ATT307 11R22.5																	
	Jinyu JY601 11R22.5																	
	Michelin 11R22.5	•																
	Michelin 295/80R22.5	•	•															
	NiPon AZ126 11R22.5																	
	O'Green AG677 11R22.5	•																
	Triangle TR666 11R22.5																	
	Triangle TR668 11R22.5	•	•	•	•	•	•	•	•	•	•	•	•	•	•	•	•	•
	Triangle TR688 11R22.5	•	•	•	•	•	•	•	•	•	•	•	•	•	•	•	•	•
	Triangle TRS01 11R22.5	•																
	Westlake AS678 11R22.5																	
	Westlake MD738 11R22.5																	

A cell that is denoted by a '•' indicates a permissible combination of drive and trailing unit tyres. Cells that are blank are not permitted.

Retread or regroove tyres are permitted on the steer axle.

Retread or regroove tyres are permitted on drive and trailer axles, provided they are certified by the manufacturer that its performance is equivalent to a new tyre.

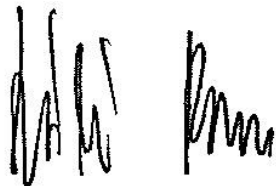
Tyre load ratings must be appropriate for the axle mass.

Tyres listed herein are specific for PBS application number V180308.

A different list of tyres will apply for other combination types and different PBS application numbers.

## Declaration

I, Laszlo Bruzsa Chief Engineer, delegate of the National Heavy Vehicle Regulator approves this PBS Vehicle Approval PBS–V180308 –VA8665.



Laszlo (Les) Bruzsa

Chief Engineer

National Heavy Vehicle Regulator

Dated: 25/01/21

## Revision table

N	VA	Vers	Brief description	Date
1	7010	1A	First issue.	16/10/19
2	8223	1A	Adding 1x truck, 1x trailer to VA7010 (additional VINs listed in bold).	06/10/20
3	8665	1A	Adding 1x truck, 1x trailer to VA8223 (additional VINs listed in bold).	25/01/21

## General access for a specified PBS vehicle

The vehicle combination(s) listed in this PBS Vehicle Approval qualify for general access to the road network under the *specified PBS vehicle* provisions of the Heavy Vehicle National Law. A specified PBS vehicle must comply with all applicable requirements of Schedule 1 of the *Heavy Vehicle (Mass, Dimension and Loading) National Regulation* (HV(MDL)NR).

## Specified PBS vehicle mass limits

1. The maximum allowable mass of a specified PBS vehicle is the lesser of the maximum PBS Level 1 GML stated in this Vehicle Approval and the relevant mass limit prescribed in Part 1, section 2, Schedule 1 of the HV(MDL)NR.
2. The maximum allowable mass of an axle group on a specified PBS vehicle is the lesser of the maximum PBS Level 1 GML axle group mass limit stated in this Vehicle Approval and the axle group mass limit prescribed in “Table 1—Axle mass limits table” in Schedule 1 of the HV(MDL)NR.
3. The maximum allowable mass between any two axles or axle groups on a specified PBS vehicle is the relevant prescribed mass limit in “Table 2—Axle spacing mass limits general table” in Schedule 1 of the HV(MDL)NR.

## Specified PBS vehicle operating conditions

1. When operating as a general access vehicle, a specified PBS vehicle must comply with all operating conditions of its Vehicle Approval that apply at Level 1. This includes payload heights, the drive axle mass requirement, approved tyre options and all operating conditions that do not specify a level of access.
2. The regulation includes a requirement about towing ratios. Loading and unloading must be managed so that the trailer mass does not exceed the mass of the towing vehicle.

## For more information

For more information visit our [PBS vehicle access permit page](#) under Access management.

## Disclaimer

The information on this page is general guidance only and does not constitute legal advice. Consider whether you require Independent legal advice to address your particular circumstances.

## Important information

As per Heavy Vehicle National Law Section 153, the driver must keep in the driver's possession a copy of this Vehicle Approval and be able to produce it for inspection by compliance officers. Penalties apply.

If changes or modifications are required, these are limited to the specifications contained in the relevant PBS Design Approval and the Application for Design Approval Part A and B. Contact the applicant (see the cover page on this document) for information related to the allowed specifications.

A change of components and/or dimensions must be certified by an approved PBS certifier and an updated version of this Vehicle Approval must be obtained. A change of tyres, outside of the list contained on this Vehicle Approval, also requires approval but will not require an inspection by a PBS certifier.

## Road access

This is not an authorisation to access the road network. You must comply with the relevant Notice or obtain an access permit.

Please note that if you add vehicles to a PBS Vehicle Approval you will need to update the access permit to reflect the latest Vehicle Approval. If the new vehicles have different masses or dimensions to what is already approved, the NHVR will have to seek Road Manager consent again; which may extend the time required to issue the new permit.

For more information on the PBS Truck and Dog Notice visit [National class 2 PBS level 1 and 2A truck and dog trailer authorisation notice 2016](#).

To apply for an access permit, visit the [NHVR Portal](#). You must supply a route ID when applying for an access permit. Use Route Planner to obtain your route ID, you can do this as part of the permit application process in the [NHVR Portal](#).

For further assistance please visit our website at [www.nhvr.gov.au](http://www.nhvr.gov.au) or call 1300 MYNHVR (1300 696 487).

For queries relating to this document please contact the PBS Coordinator at [pbs@nhvr.gov.au](mailto:pbs@nhvr.gov.au).

## Transfer of Vehicle Approval

When applying for an access permit for a PBS vehicle, a PBS Vehicle Approval must be in the name of the company that operates the vehicle on the road.

If/ when a PBS combination is sold, the PBS Vehicle Approval has to be transferred across to the new owner.

To transfer a PBS Vehicle Approval to a new owner, use a [Vehicle Approval transfer application form](#).