

2008 NEWMAR DUTCHSTAR 4304 MOTORHOME

- 4 slides
- Built in dishwasher, washer & dryer
- Newer tires
- Wheel covers
- New batteries

ADDITIONAL ADD ON'S:

- Magnium Hybrid Inverter/Charger
- 400 watts of solar power panels mounted on roof

Bear Creek Maintenance Ltd
 1-712016 Range Road 72A
 County of Grande Prairie #1, AB
 T8W 5H5, CA
 bearcr01@gmail.com
 (780) 814-2335



Invoice: 11684
Date: 6/21/2024

Service Order	Terms	Due Date	Authorizer	Customer PO	Service Writer	Unit #
4777	Net 30	7/21/2024				

Item	Description	Quantity	Rate	Amount
	Complaint: Check unit over. Cause: Customer request			
Labor	Correction: Chassis / Chassis / Checked everything over on the unit. Everything is in good condition. - Completed: 6/21/2024			\$109.60
			Subtotal	\$109.60

Complaint: Service unit.
Cause: Customer request
 (Inspection)

Labor	Correction: Engine / Lubrication / Greased unit. Changed the engine oil, fuel filters and the air filter. Changed the oil, fuel and air filter in the gen set. Checked the diff oil level. - Completed: 6/21/2024			\$247.20
Parts	MOTORHOME GREASE	1.00000	\$9.00	\$9.00
Parts	LUBE SPIN-OD	1.00000	\$53.55	\$53.55
Parts	FUEL SPIN-ON	1.00000	\$21.89	\$21.89
Parts	FUEL/WATER SEPARATOR SPIN-ON W/ DRAIN	1.00000	\$36.56	\$36.56
Parts	OIL FILTER	1.00000	\$14.73	\$14.73
Parts	OVAL AIR ELEMENT	1.00000	\$19.43	\$19.43
Parts	REPLACEMENT FOR ECOLITE AIR ELEMENT IN DISPOSABLE	1.00000	\$165.92	\$165.92
Parts	ROTELLA T4 TRIPLE- 15W40 + EHC charge	30.00000	\$6.33	\$189.90
Parts	149-2513	1.00000	\$74.37	\$74.37
			Subtotal	\$832.55

Unit: VIN: 4VZBT1D908C061310
2008 Spartan Mountain Master (MM)
Chassis: 39,375 Kilometers
Engine: 372 Hours

Labor	\$356.80
Parts	\$585.35
Shop/Field Supplies	\$21.41
Pre-Charge Subtotal	\$963.56
GST (5% of \$963.56)	\$48.18
Total	\$1,011.74
Payments & Credits	\$0.00
Balance Due	\$1,011.74

GST# 838850253

All parts and labour are Net 30 days. After 30 days 2% interest will be charged per month (26.824% per annum)

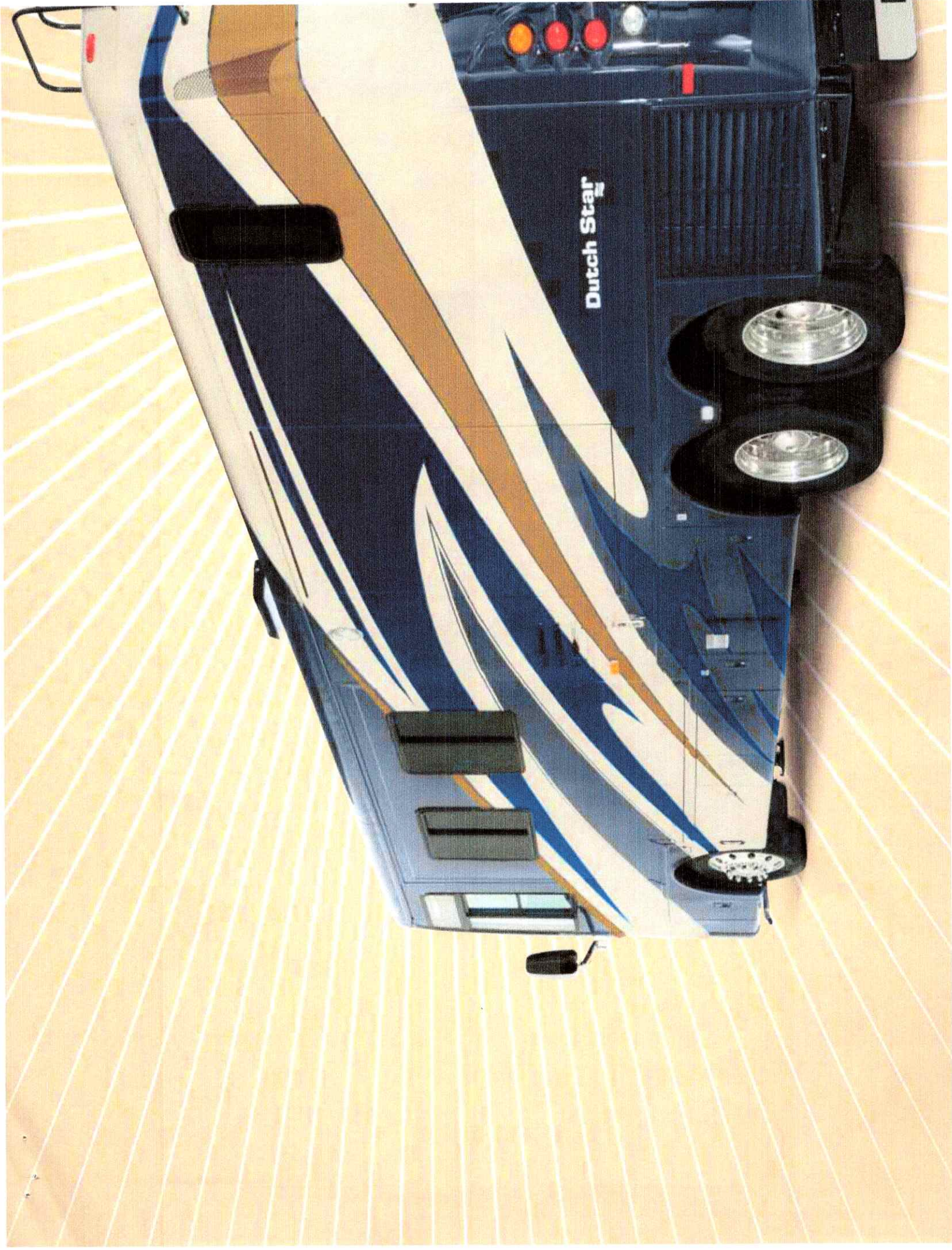
Warranty on parts are warranted by parts supplier.

E-transfers accepted : bsacr01@gmail.com




Comfort Drive

NEWMAR
Dutch Star
2008 DIESEL MOTORHOME



Dutch Star



All Signs Point to Class

When the open road calls, choose the 2008 Dutch Star to lead the way with class and personality. A wealth of standard features, upscale options and Newmar craftsmanship create a plush, comfortable environment that feels just like home. The high-horsepower engine delivers the performance to take you mile after mile, journey after journey. Sophistication, style and power—now you're headed in the right direction.



NEWMAR







MICROWAVE

The standard 30-inch convection microwave oven makes cooking and reheating meals quick and simple.



COOKTOP

When you're not using the three-burner cooktop with piezo ignition, the polished Corian® range cover can be folded into place for more countertop space.



DOMETIC® FOUR-DOOR REFRIGERATOR

This Dutch Star option features a water dispenser and adds true home-style functionality to your kitchen.



STYLISH DINING

The hidden-leaf dinette table with two fixed chairs (and two folding chairs) provides a cozy area for eating meals or enjoying other activities.



Dutch Star
2008 DIESEL MOTORHOME



Living the Good Life

No matter where you travel, the Dutch Star brings the comforts of home on every journey. The spacious living area offers luxuries such as Flexsteel® furniture, an LCD TV (26, 32 or 40 inches) and a Sony® surround-sound home theater system with a single-disc DVD player for front-row entertainment.

Shown in 4317 floorplan with Cider Décor and Legacy Maple Hardwood Cabinetry.



BEDROOM AMENITIES

The bedroom features generous hardwood cabinets and a 26-inch LCD television that's ready to entertain.



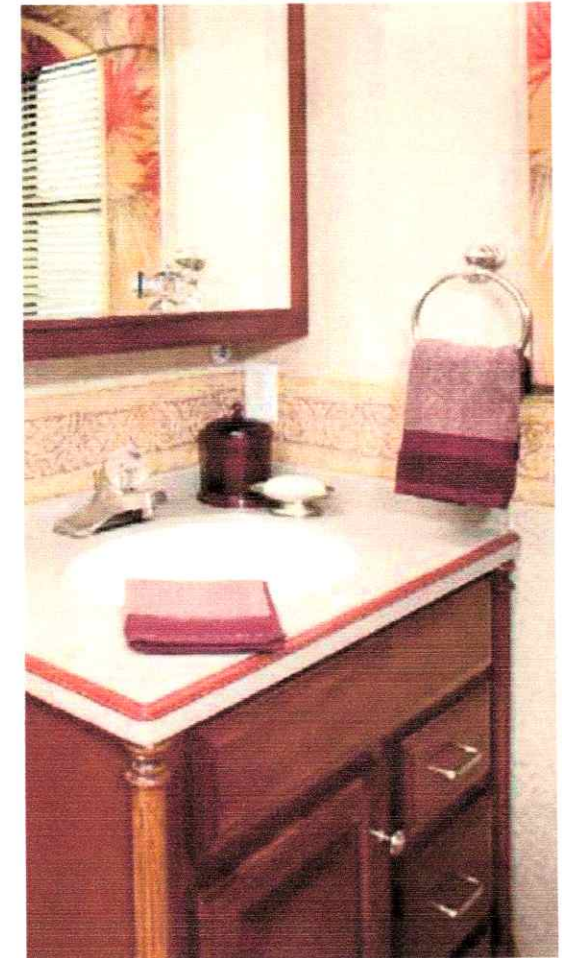
WASHER AND DRYER

The optional one- or two-piece washer and dryer will help you keep your clothing fresh and clean throughout your travels.



WARDROBE

The large wardrobe closet with mirrored doors provides additional storage and features shelves in the back to help keep your possessions organized.



BATHROOM AMENITIES

In the lavatory, the polished Corian® countertop featuring an integrated bowl adds a touch of refinement, while drawers under the sink provide plenty of space for personal items.

Sweet Dreams

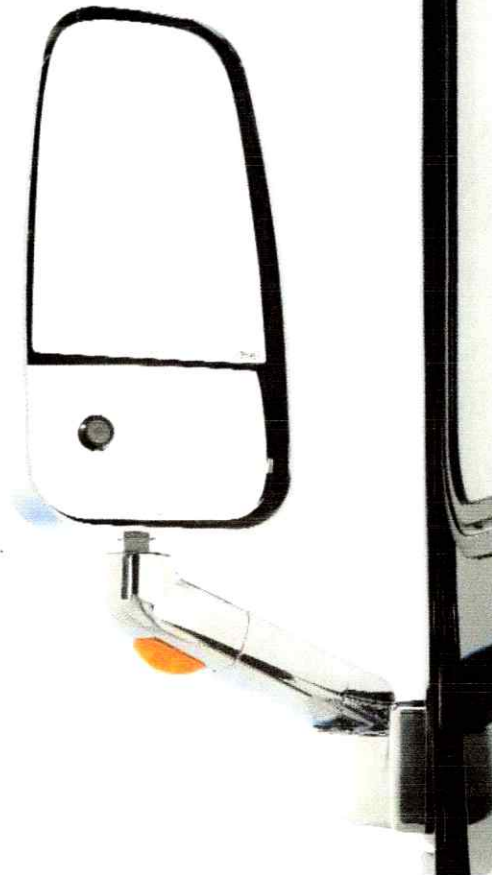
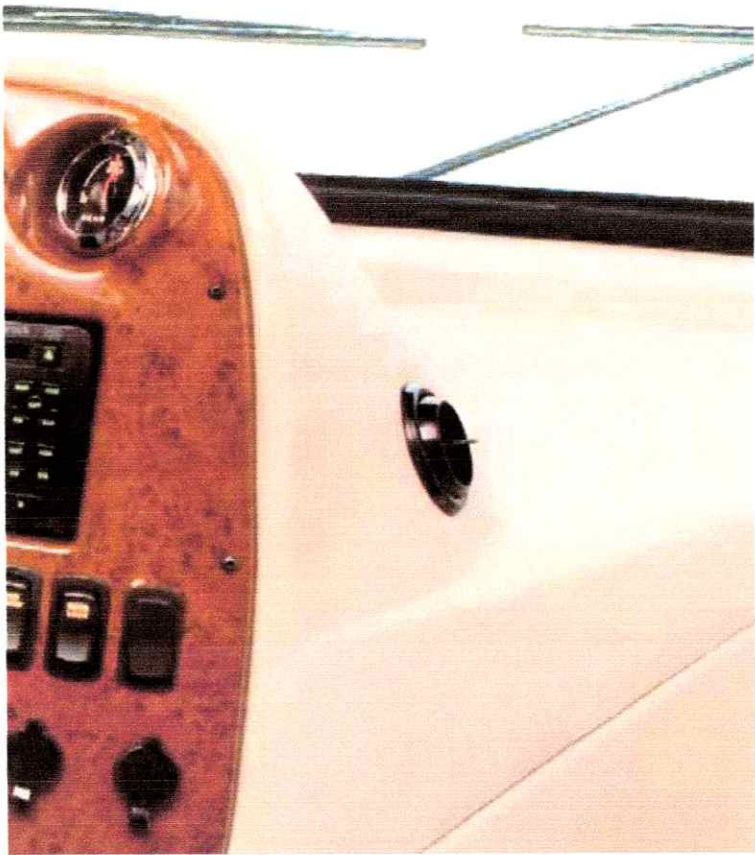
The Dutch Star's bedroom is filled with amenities and rich details, making it an inviting place to relax and unwind any time you need a break.

The standard luxurious pillowtop mattress will help you drift off to sleep in comfort.



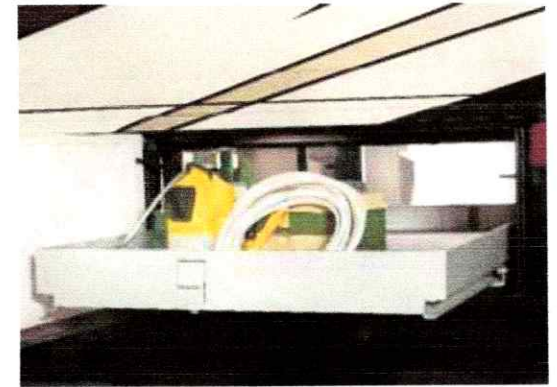


Dutch Star
2008 DIESEL MOTORHOME



EXTERIOR MIRRORS

The exterior mirrors are now bottom-mounted and can be equipped with optional, built-in sideview cameras that let you safely view from the cab the area immediately surrounding either side of the coach.



EXTERIOR STORAGE

Stow all your favorite travel gear—from either side of the coach—in this large exterior pass-through compartment. Side-hinged swing-out doors give you easy access, as do the optional slideout trays.

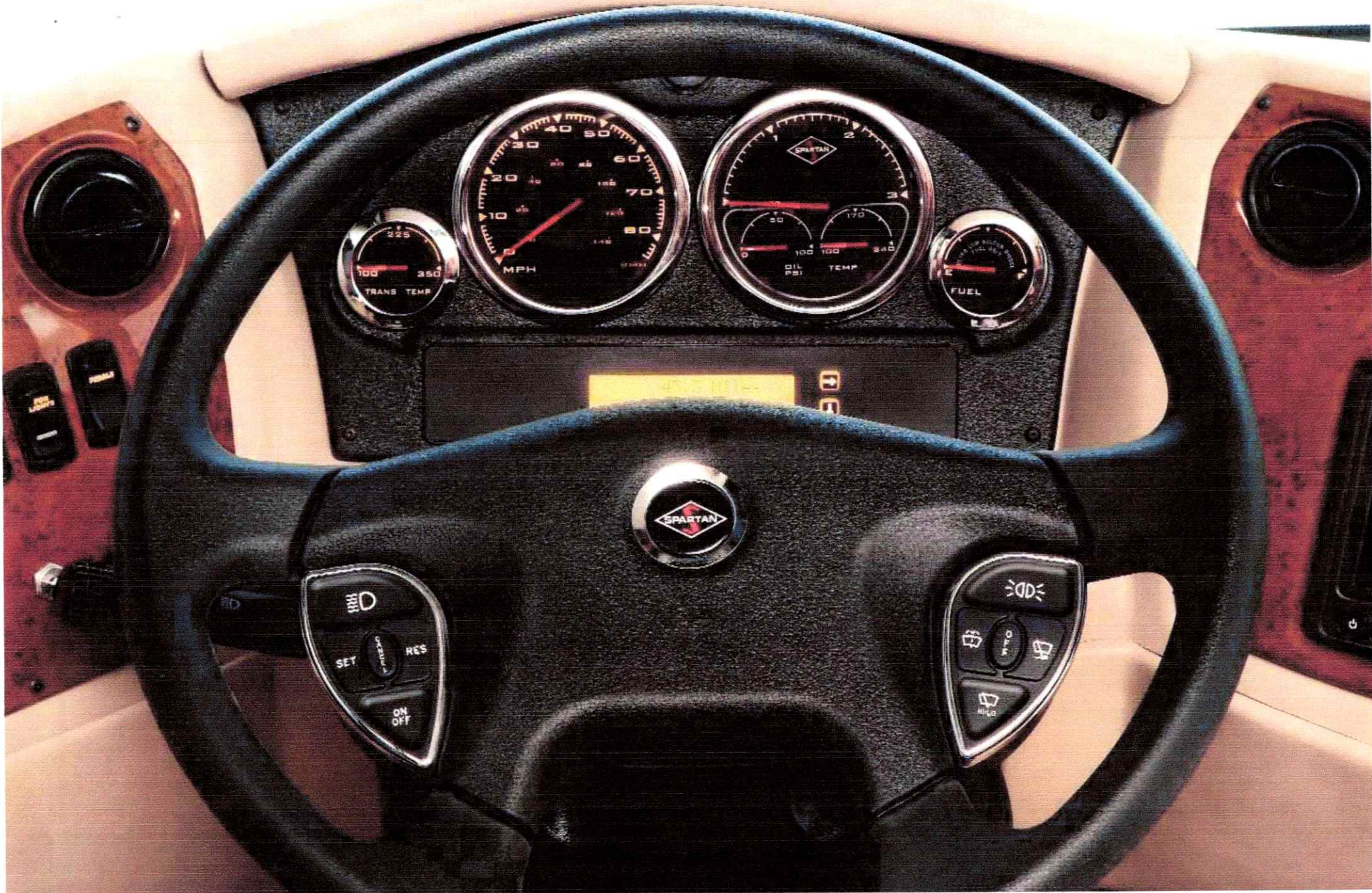


OUTDOOR ENTERTAINMENT

The optional external entertainment center features a 26-inch LCD TV, AM/FM radio and CD player to provide listening and viewing pleasure while enjoying the outdoors.

Command the Road

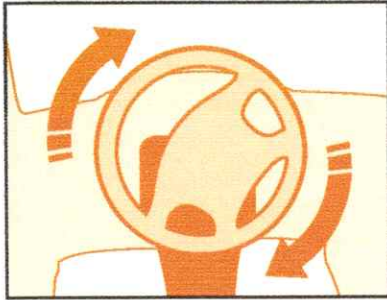
The Dutch Star's functional cockpit makes taking the wheel and navigating the road comfortable and convenient. The ergonomic design of the Dutch Star's dash puts instruments and controls within easy reach, while the leather/vinyl driver and passenger seats come standard with six-way power adjustment and power lumbar to help you find the perfect seating position. And a convenient rearview color monitor system provides additional safety wherever you go.



Dutch Star
2008 DIESEL MOTORHOME

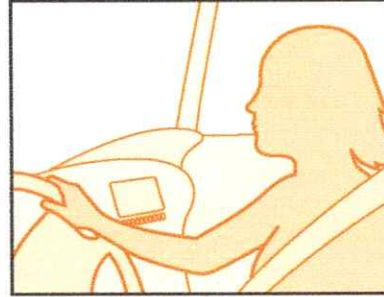


Comfort Drive™ STEERING



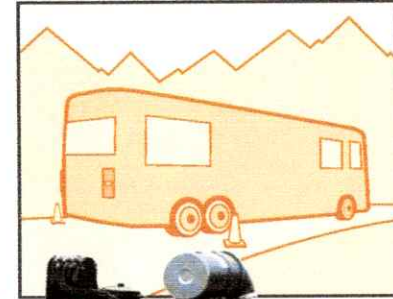
AUTO-CENTERING

Regardless of the position of the steering wheel, even after a hard turn, it always returns to center automatically.

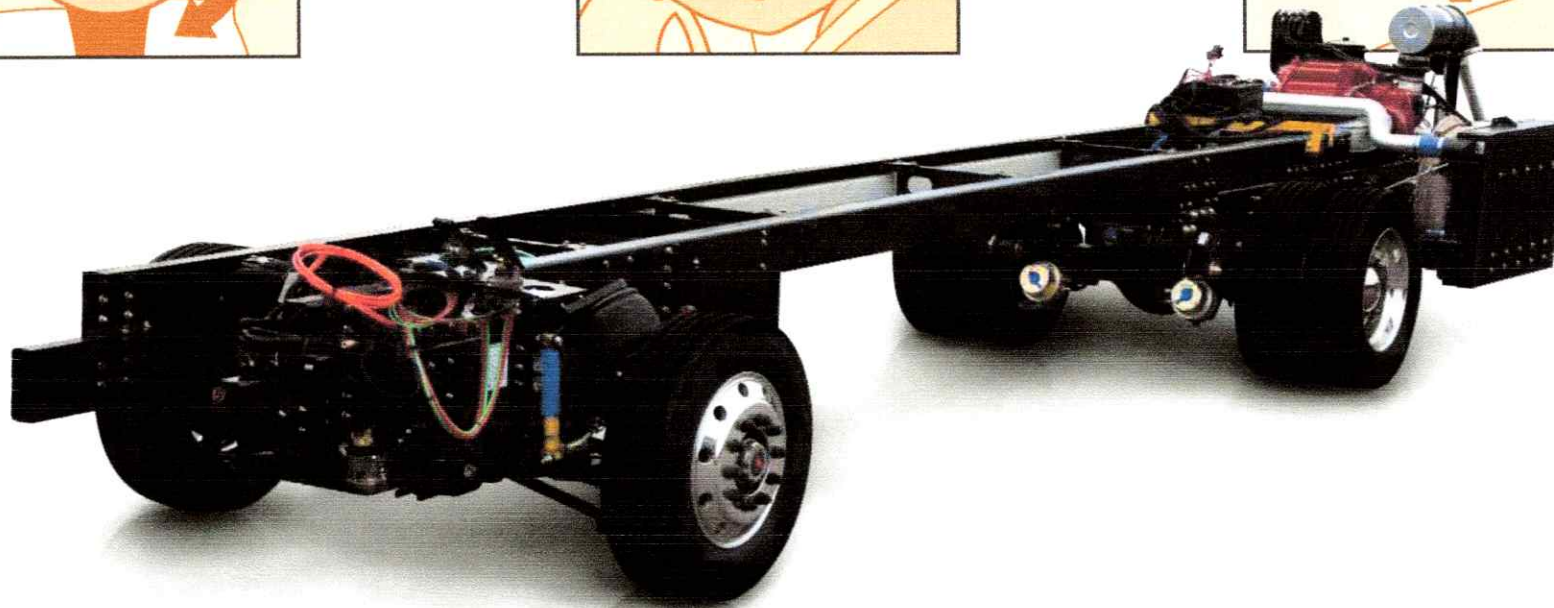


EASY TURNING

The Comfort Drive steering system seriously reduces the effort required in handling your coach.



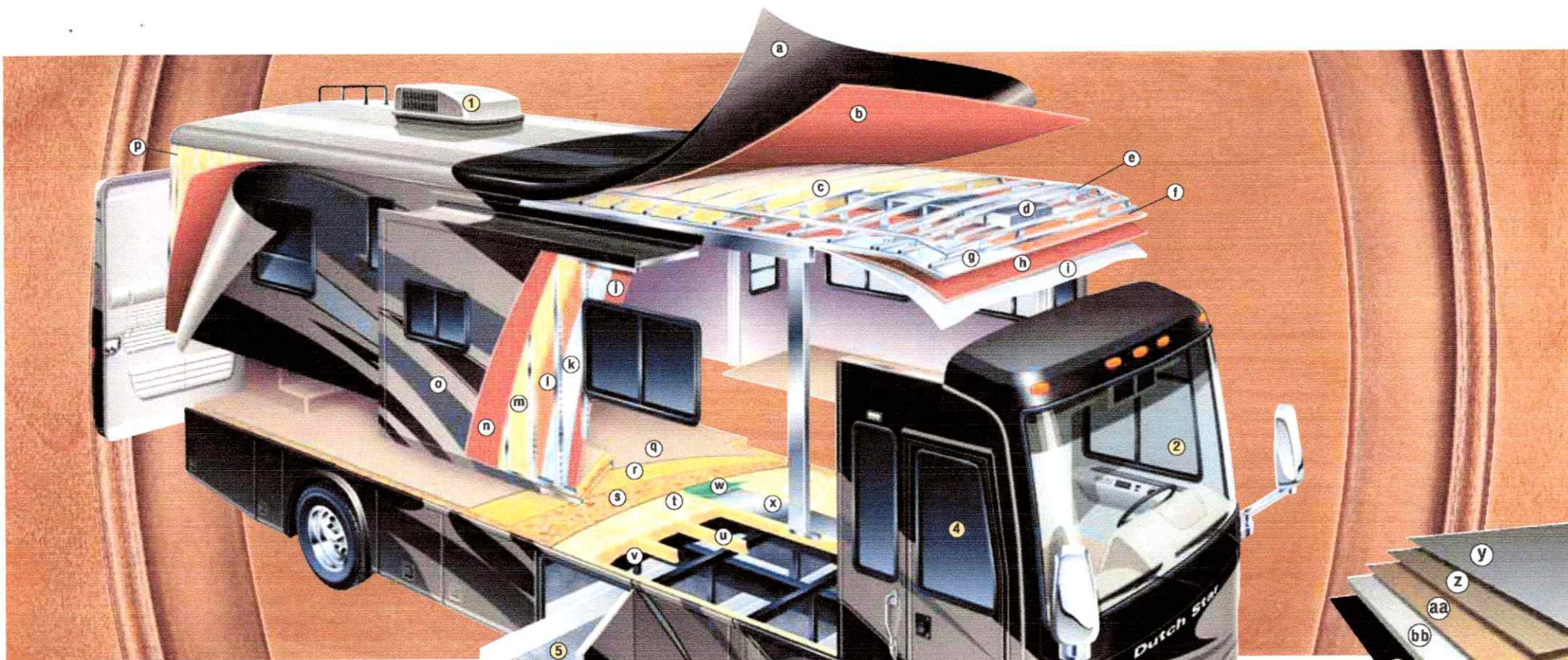
BACKING UP
Comfort Drive makes backing into your campsite a much easier task through reduced effort and auto-centering.



Spartan® Mountain Master Chassis with Comfort Drive

Together, the powerful Spartan Mountain Master diesel pusher chassis and our exclusive Comfort Drive™ steering system provide superior ride and handling and excellent driving performance. The Mountain Master chassis is one of the most reliable chassis on the market, backed by a 36-month, 50,000-mile, no-deductible warranty, including roadside assistance. Comfort Drive steering reduces the driver's efforts in taking the wheel and controlling the coach in situations such as parking, cornering and backing up, automatically correcting steering to improve maneuverability.





CEILINGS: R-VALUE = 16

- a. BriteTEK™ Roof
- b. 9 mm Wood Decking
- c. Fiberglass Batten Insulation
- d. A/C Ducting
- e. Aluminum Roof Truss
- f. Kraft Paper Vapor Barrier
- g. ¾" Bead Foam
- h. ¾" Panel
- i. Padded Vinyl Overlay

WALLS: R-VALUE = 11

- j. ¾" Plywood Interior Wall
- k. ¾" Bead Foam
- l. Kraft Paper Vapor Barrier
- m. Fiberglass Batten Insulation
- n. ¾" Plywood Exterior Wall
- o. Composite One-piece Gelcoat Exterior Sidelwall
- p. 16" On-center Aluminum Framing with 3¾" Header

FLOORING: R-VALUE = 16

- q. Carpet/Tile
- r. Carpet Padding
- s. ¾" Floor Decking
- t. Fiberglass Batten Insulation
- u. 2" x 3" Wood Framing
- v. Polyethylene Moisture Barrier
- w. Foam Panels (Noise Protection)
- x. Aluminum Ducting

**BASEMENT:
R-VALUE = 4
(INCLUDED IN
FLOOR R-VALUE)**

- y. Cargo Liner
- z. ¾" Floor Decking
- aa. ¾" Luan Panel
- bb. 1½" Bead Foam
- cc. Aluminum Sheeting (Prevents Distortion)

1. 13.5M or 15M Penguin™ Heat Pump Central Air Conditioners (2)
2. One-piece Windshield
3. Coated Aluminum Wheels
4. Double-pane Tinted Safety-glass Windows
5. Side-hinged Baggage Doors with Optional Pullout Tray

16" On-center Framing
Just like a fine site-built residential home, your Newmar home is framed 16 inches on center, which allows the best placement of outlets, switches and other components.

Newmar Total Comfort™ Central Air Conditioning
Experience RV air conditioning just like that found in site-built homes. Newmar's Total Comfort Central Air Conditioning is actually two separate, fully ducted systems: one to distribute incoming cool air, the other to quickly and effectively remove warm air from every living area.



Protected C-channels

To keep the electrical wiring that runs through holes in the aluminum-frame C-channels from chafing, each hole is ringed with a rubber grommet.



Sikaflex®

Used throughout Newmar construction, Sikaflex® elastic adhesive is one of the strongest bonding agents on the market today. It also serves as a sealant against air and water. And it helps dampen both sound and vibration.



WOOD FINISHES & INTERIORS

- a. Cider Color Scheme with flooring options (left to right): simulated plank (standard, shown with matching cabinetry), ceramic tile and simulated marble
- b. Glacier Color Scheme with flooring options (left to right): simulated plank (standard, shown with matching cabinetry), ceramic tile and simulated marble
- c. Hazelnut Color Scheme with flooring options (left to right): simulated plank (standard, shown with matching cabinetry), ceramic tile and simulated marble
- d. Sable Color Scheme with flooring options (left to right): simulated plank (standard, shown with matching cabinetry), ceramic tile and simulated marble
- e. Oak Hardwood Cabinetry, Standard
- f. Coastal Cherry Hardwood Cabinetry
- g. Ginger Maple Hardwood Cabinetry with Glazed Doors
- h. Legacy Maple Hardwood Cabinetry

Newmar Express Limited Warranty

Every Dutch Star Diesel Pusher is backed by Newmar's one-year limited warranty/unlimited miles. Ask your Newmar dealer for details.

The Limited Five-Year Structural Warranty

If any part of your Newmar recreational vehicle superstructure (which is the steel/aluminum structure of the sidewall, roof or frame) fails to perform properly within five years, from the date of purchase, due to faulty workmanship or material supplied by Newmar, it will be repaired without charge for either parts or labor by Newmar. This structural warranty is available only to the original purchaser and is non-transferable.

Full-Paint Masterpiece Finish™

Newmar's Full-Paint Masterpiece Finish raises the exterior beauty and durability of our motorhomes to a whole new level. This model year, we're offering our richest-looking graphics ever—to lend even more character and class. As industry leaders in applying full body paint to motorhome coaches, we at Newmar are pleased to offer the Full-Paint Masterpiece Finish as a Dutch Star Diesel Motorhome standard.



CIDER

GLACIER

HAZELNUT

SABLE

The Newmar Touch

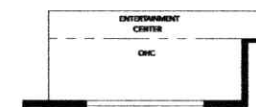
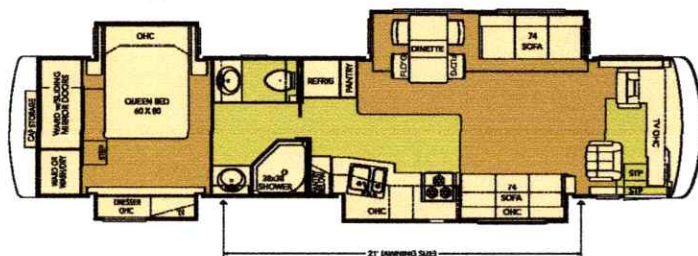
We craft every motorhome with a special attention to detail, no matter how small or large. From the feel of the fabric, to the smooth touch of the custom-built cabinets, to our selection of color options. Every little detail and finishing touch contributes to the overall style and comfort of each motorhome. Whether you look from afar or study them up close, you'll notice the Newmar difference.

Some features shown in our literature are optional. Colors and finishes are photographic representations. The actual materials may look different. Prices, specifications and floorplans are subject to change at Newmar's discretion, without prior notice or obligation. Please see your dealer for actual samples and specifications.

Floorplans and Options

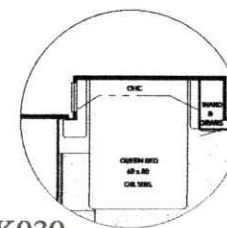
DSDP 4023

Length: 40' 8"
Width: 101.5"
Options: K124_1,
K421_1, K541_1,
K911, P370_1



J580

59" Entertainment Center
4317, 4320

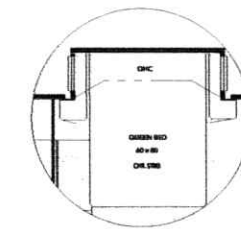
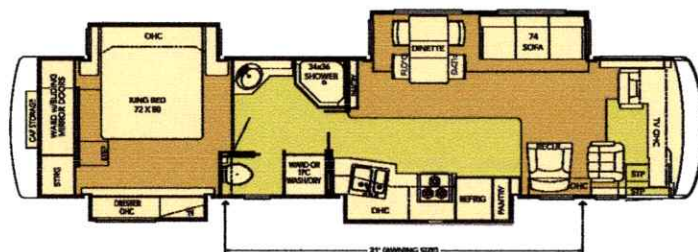


K030

Queen Bed with Rear Wardrobe
4024

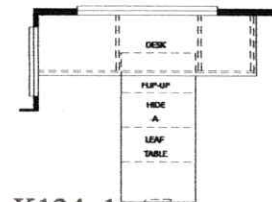
DSDP 4024

Length: 40' 8"
Width: 101.5"
Options: K030,
K124_1, K240,
K421_1, K541_1,
R104



K030_1

Queen Bed I/O King
4035, 4304, 4317, 4320

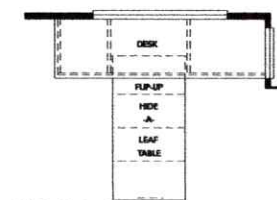
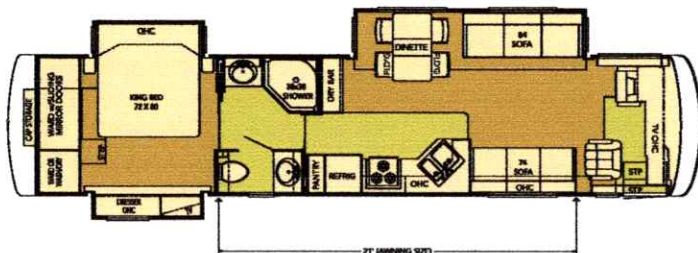


K124_1

Combination Desk Dinette
4023, 4024, 4035, 4304,
4317, 4320

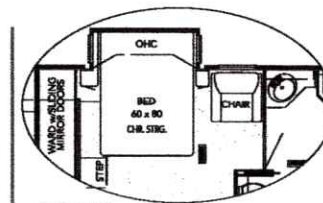
DSDP 4035

Length: 40' 8"
Width: 101.5"
Options: K030_1,
K124_1, K421_1,
K541_1, K911,
K801, N450,
P370_2



K124_2

Combination Desk Dinette
4354, 4355

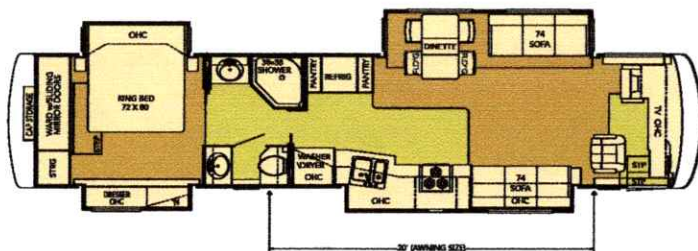


K240

Queen Bed with Chair
4024

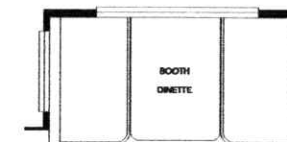
DSDP 4304

Length: 42' 8"
Width: 101.5"
Options: K030_1,
K124_1, K421_1,
K541_1, K911,
P370_2



K420

Booth Dinette
4354, 4355

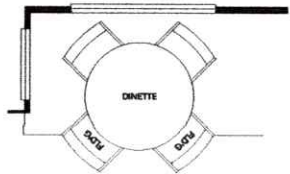


K421_1

Booth Dinette
4023, 4024, 4035, 4304,
4317, 4320

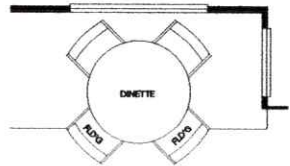


Dutch Star
2008 DIESEL MOTORHOME



K541_1

Round Dinette
4023, 4024, 4035, 4304,
4317, 4320



K541_2

Round Dinette
4354, 4355

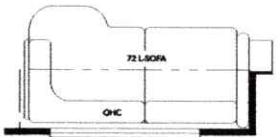
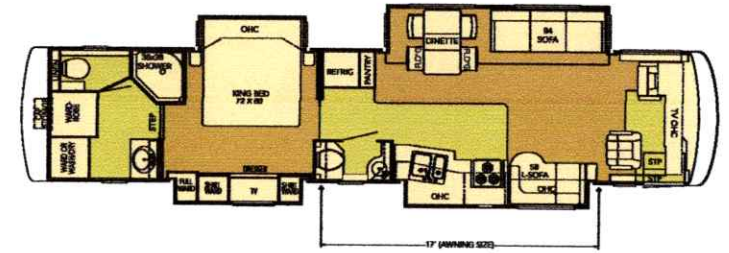


K801

Combination U-dinette
and L-sofa
4035, 4317, 4320

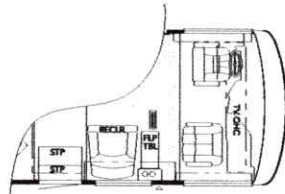
DSDP 4317

Length: 42' 8"
Width: 101.5"
Options: J580,
K030_1, K124_1,
K421_1, K541_1,
K801, P370_3



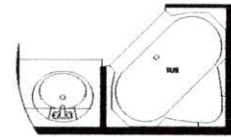
K911

72" L-lounge
4023, 4035, 4304



N450

Center Entry
4035

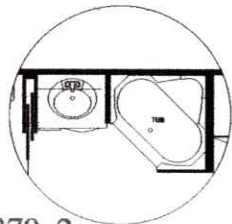
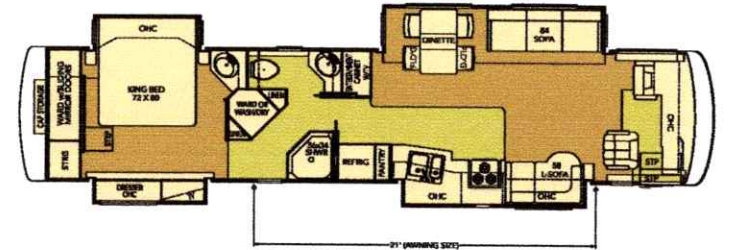


P370_1

Tub ILO Shower
4023

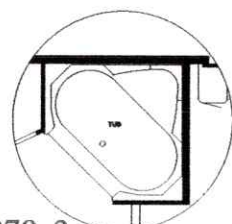
DSDP 4320

Length: 42' 8"
Width: 101.5"
Options: J580,
K030_1, K124_1,
K421_1, K541_1,
K801



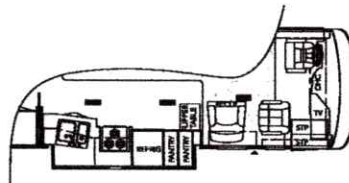
P370_2

Tub ILO Shower
4035, 4304



P370_3

Corner Tub ILO Shower
4317

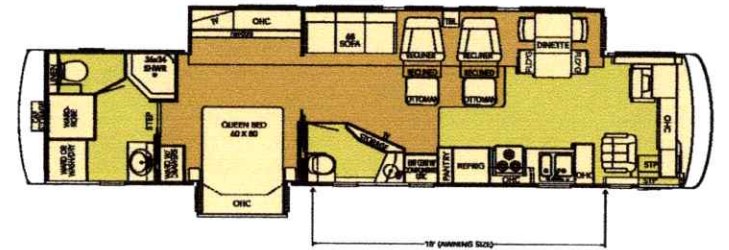


R104

Power Lock Arms
4024

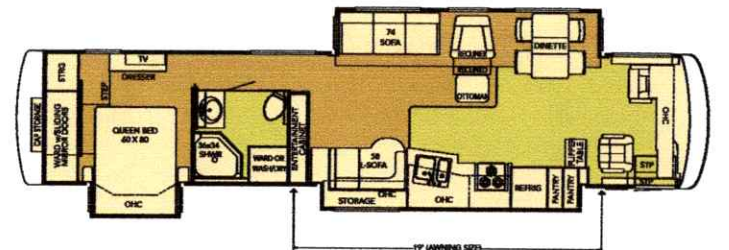
DSDP 4354

Length: 42' 8"
Width: 101.5"
Options: K124_2,
K420, K541_2



DSDP 4355

Length: 42' 8"
Width: 101.5"
Options: K124_2,
K420, K541_2



Carpet Simulated Plank Flooring

Standard Features

CHASSIS FEATURES

- Spartan® Mountain Master GT Chassis with IFS
- Cummins® ISL 425 hp
- Two-stage Engine Compression Brake
- Adjustable Pedals
- Tag Axle (43' Floorplans)
- Coated Aluminum Wheels
- Hydraulic Leveling Jacks with Single-touch Control
- Cruise Control
- Comfort Drive™ Steering
- Manual Tilt-and-Telescopic Steering Column
- Recessed Fuel Fills with Crossover to Fill from Either Side
- Back-up Alarm
- Anti-lock Braking System
- Electronic Chassis Information Display in Dash

AIR CONDITIONING & HEATING

- Two 13.5M Penguin™ Heat Pump Central Air Conditioners (40' Floorplans)
- Two 15M Penguin™ Heat Pump Central Air Conditioners (43' Floorplans)
- Propane Furnace with In-floor Ducted Heat
- Dash Heater and High-output Air Conditioner
- Propane Leak Detector
- Wall-mounted Sensors for Heating and Air Conditioning

APPLIANCES & ACCESSORIES

- 30" Convection Microwave Oven
- Three-burner Cooktop with Piezo Ignition
- Polished Corian® Range Cover
- Dometic 9 cu. ft. Refrigerator with Icemaker
- Hardwood Raised-panel Refrigerator Front
- 10 gal. XT16 Gas/Electric Water Heater with Direct-spark Ignition
- Washer/Dryer Prep
- 32" LCD TV in Living Area* (26" or 40" LCD TV on Certain Floorplans)
- 26" LCD TV in Bedroom
- AM/FM Dash Radio with MP3 Adapter and CD Player
- Sony® Surround-sound Home Theater System with Single-disc DVD Player
- Rearview Color Monitor System
- TV Antenna with Power Booster with Two Interior Jacks
- TV Antenna "UP" Warning Signal
- Satellite Prep—Phone, TV Jack and Receptacle
- Audio/Video Switch System with Remote
- Telephone Connection with Phone Jacks in Living and Dash Area
- Cable TV Connection with Rg6 Coax
- High-definition Component Wiring and HD-ready Video Switching System
- Two Bedroom Radio Speakers with On/Off Switch
- Roof-mounted Air Horns
- 10 Bc Fire Extinguisher, Carbon Monoxide and Smoke Detectors

CABINETS & FURNITURE

- Oak Hardwood Cabinets with Raised-panel Double-arched Cabinet Doors
- Hidden-leaf Dinette Table with Four Chairs (Two Fixed, Two Folding)*
- Polished Corian® Countertop in Kitchen with Undermounted Sink and Flush Sink Covers
- Polished Corian Countertop in Bathroom with Integrated Bowl
- Residential-style Full-extension Ball-bearing Drawer Guides
- Knife Hinges on Cabinet Doors
- Flexsteel Furniture
- Pull-out Pantry Shelves*
- Leather/Vinyl Driver/Passenger Seats with Six-way Power, Power Lumbar, with Footrest on Oversized Passenger Seat
- Adjustable-height Shoulder Seat Belts
- Lifts on Bed Top to Access Storage Area
- Storage Shelves Recessed into Rear Cap of Rear Wardrobe Floorplans
- Luxurious Pillowtop Mattress with Quilted Bedspread, Shams and Accent Pillows
- King Bed*

ELECTRICAL FEATURES

- 8.0 kW Cummins Onan® Quiet Series Diesel Generator on Slideout Tray
- 50 Amp Electrical Service with Flexible Cord
- Four 6 Volt House Batteries on Pullout Tray
- Battery Disconnect Switch
- 5 Watt Solar Panel
- 2000 Watt Inverter
- Emergency Start Switch
- Exterior Security Light on Each Side
- Midship Side Turn Signals
- Recessed Docking Lights
- Switched Receptacle for Engine Block Heater
- 110 Volt Exterior Receptacle
- Fluorescent Lights in Ceiling and Overhead Cabinets
- Lighted Wardrobes
- Carpet on Wardrobe Bottoms with Pearl Cream Headliner on Shelves and Overhead Cabinet
- Slideout Information Voice Module
- Manually Operated Hold-to-Run Slideout Switch
- ICC Light Flasher Switch
- Two 12 Volt Auxiliary Receptacles on Dashboard
- Exterior TV Jack
- Interior Courtesy Lights
- Mood Lights Recessed in Ceiling
- Map Lights

EXTERIOR FEATURES

- Full-Paint Masterpiece Finish™ with Diamond Shield Front Protective Film
- One-piece Windshield
- Large Chrome Convex Exterior Mirrors with Remote Control and Defrost
- Entrance Door with Automatic Double Step
- Power Flush Stepwell Cover

- Lighted Exterior Storage Compartments with Cargo Liner, Controlled by Interior Master Switch
- 10,000 lb. Towing Hitch with Two Extra 14 Gauge Wires
- Lighted Acrylic Assist Handle at Entrance Door
- Rear Protective Full-width Tow Guard
- Rear Ladder
- Undercoating
- Mud Flaps

INTERIOR FEATURES

- Padded Vinyl Ceiling
- Day/Night Pleated Window Shades and Lambrequins
- Mini-blinds in Kitchen and Bathroom
- Hardwood Fascia on Living Area Slideouts
- Simulated Plank Floor in Kitchen, Bathroom and Entrance Area
- Polished Corian Routed Backsplash with Inserts in Kitchen
- Deluxe Carpeting with High-density Padding in Living Room and Bedroom
- Flat-panel Interior Passage Doors
- Interior Assist Handle at Main Entrance Door
- Sun Shades on Driver and Passenger Side Windows
- Power-activated Sun Visors
- Vertical Drop-down Windshield Area Privacy Shade

PLUMBING & BATH FEATURES

- Demand Water System with SHURflo® Pump
- Sewage Holding-tank Rinse
- Water Heater Bypass System
- Thetford™ Aqua Magic Plus China Stool with Wood Seat and Sprayer (Vacuum Flush on Rear Bath Floorplans)
- Towel Bars and Tissue Holder
- Towel Ladder on Hinged Bathroom Door
- Fiberglass Tub/Shower with Glass Shower Door
- Monitor Panel
- Water Pump Switches Located in Bathroom, Kitchen and Exterior, Near Gate Valves
- Exterior Shower
- Water Filter for Entire Unit

WINDOWS, AWNINGS & VENTS

- Double-pane Tinted Safety-glass Windows
- Fan-Tastic® Vent with Rain Sensor in Kitchen and Bathroom Areas
- Skylight in Bathroom*
- A&E® 9000 Bedroom and Slideout Window Awnings
- A&E Oasis Power Front Entrance Door Awning
- A&E Weather Pro Power Side Awning
- A&E Slideout Awning Covers
- Cockpit Overhead Ventilation System

Optional Features

AIR CONDITIONING & HEATING

- Two 15M Penguin™ Heat Pump Central Air Conditioners
- Extra 15M Penguin™ Heat Pump Central Air Conditioner (43' Floorplans)
- Hydronic Zone Heating System (Replaces Water Heater and Furnace)
- Auxiliary Heater in Bedroom

APPLIANCES & ACCESSORIES

- Three-burner Range with Oven and Piezo Ignition
- Dometic® 12 cu. ft. Side-by-side Refrigerator with Icemaker
- Dometic 12 cu. ft. Four-door Refrigerator with Icemaker and Water Dispenser
- Norcold® 12 cu. ft. Four-door Refrigerator with Icemaker and Water Dispenser
- Norcold Freezer on Pullout Tray
- One-piece Washer/Dryer*
- Two-piece Washer/Dryer*
- Dishwasher-in-a-drawer Below Three-burner Cooktop
- 23" LCD TV with DVD Player in Living Area Overhead Cabinet*
- 32" LCD TV in Front Overhead Cabinet*
- Sirius® Satellite Radio Capability (Does not include monthly subscription)
- 10-disc CD Player
- External Entertainment Center with 26" LCD TV and AM/FM Radio and CD Player
- Automatic Satellite without Receiver
- In-motion Satellite without Receiver
- In-motion High-definition Satellite with Two HD Receivers and Two HDTV Converters
- Entertainment Center with Relocated Living Area TV
- Trip Tek™ Electronic Travel Information (Displayed on Rearview Monitor)
- Sideview Cameras
- Navigation System
- CB Radio with Antenna
- CB Antenna
- Engine Assist for Water Heater (Not Available with Hydronic Heating Option)

CABINETS & FURNITURE

- Coastal Cherry Hardwood Cabinets
- Ginger Maple Glazed Hardwood Cabinets
- Legacy Maple Hardwood Cabinets
- Distressed Leather/Vinyl Driver and Passenger Seats
- Heated Driver/Passenger Seats
- Distressed Leather/Vinyl Swivel Rocker Recliner*
- Distressed Leather/Vinyl Recliner with Ottoman*
- Distressed Leather/Vinyl Freestanding Recliner*
- Leather/Vinyl L-lounge*
- Distressed Leather/Vinyl Sofa*
- Distressed Leather/Vinyl Magic Bed Sofa*
- Distressed Leather/Vinyl Hide-a-Bed Sofa with Air Mattress*
- Leather/Vinyl Combination U-dinette and L-lounge*
- Booth Dinette with Seat Belts

*CHECK WITH DEALERSHIP ON FLOORPLAN AVAILABILITY.

- Combination Desk/Dinette Table with Two Fixed and Two Folding Chairs*
- Round Hardwood Dinette Table with Two Fixed and Two Folding Chairs with Large Dinette Window*
- Folding Coffee Table
- Overhead Cabinet Above Sofa and Dinette (Included with the Power Lock Arm Option)

ELECTRICAL FEATURES

- Solar Prep
- 10.0 kW Power Tech* Diesel Generator (43' Models)
- Pre-wired for Freezer
- Power Cord Rewind Reel
- Energy Management System
- Roof-mounted Spotlight

EXTERIOR FEATURES

- Large Storage Tray with Access from One Side or Either Side
- Small Storage Tray

INTERIOR FEATURES

- Simulated Marble Floor in Kitchen, Bathroom and Entrance Area
- Ceramic Floor Tile in Kitchen, Bathroom and Entrance Area
- Ceramic Floor Tile or Simulated Marble in Kitchen, Bathroom and Throughout Main Living Area with Custom Area Rug
- Simulated Plank Extended Throughout the Main Living Area with Custom Area Rug
- Undermounted Solid-surface Sinks
- Center Entrance Door Layout*

PLUMBING & BATH FEATURES

- Assist Handle in Tub/Shower
- Fold-down Shower Seat
- Corner Bathtub
- 110 Volt Heat Pads for Holding Tanks

CONSTRUCTION FEATURES

- One-piece Molded Fiberglass Roof with 9mm Decking
- Power Lock Arms on All Slideout Rooms
- Power Baggage Door Locks

WINDOWS, AWNINGS & VENTS

- Keyless Entry with Touch Pad
- Driver's Side Power Window
- Drop-down Shade on Weather Pro Side Awning

*CHECK WITH DEALERSHIP ON FLOORPLAN AVAILABILITY.

Floorplan Specifications

FLOORPLAN	APP. OVERALL LENGTH ¹	WIDTH	APP. OVERALL HEIGHT	INTERIOR WIDTH	INTERIOR HEIGHT	GREY	SEWAGE	WATER	PROPANE	FURNACE	WATER HEATER
DSDP 4023	40' 8"	101.5'	12' 6"	95.5'	84"	65 gal.	45 gal.	105 gal.	32 gal.	42,000 Btu	10 gal.
DSDP 4024	40' 8"	101.5'	12' 6"	95.5'	84"	65 gal.	45 gal.	105 gal.	32 gal.	42,000 Btu	10 gal.
DSDP 4035	40' 8"	101.5'	12' 6"	95.5'	84"	65 gal.	45 gal.	105 gal.	32 gal.	42,000 Btu	10 gal.
DSDP 4304	42' 8"	101.5'	12' 7"	95.5'	84"	65 gal.	45 gal.	105 gal.	32 gal.	42,000 Btu	10 gal.
DSDP 4317	42' 8"	101.5'	12' 7"	95.5'	84"	65 gal.	45 gal.	105 gal.	32 gal.	42,000 Btu	10 gal.
DSDP 4320	42' 8"	101.5'	12' 7"	95.5'	84"	65 gal.	45 gal.	105 gal.	32 gal.	42,000 Btu	10 gal.
DSDP 4354	42' 8"	101.5'	12' 7"	95.5'	84"	65 gal.	45 gal.	105 gal.	32 gal.	42,000 Btu	10 gal.
DSDP 4355	42' 8"	101.5'	12' 7"	95.5'	84"	65 gal.	45 gal.	105 gal.	32 gal.	42,000 Btu	10 gal.

Spartan® Chassis Information

FLOORPLAN	ENGINE HP	AXLE RATIO	FUEL CAP.	WHEELBASE	FRONT GAWR ²	REAR GAWR ²	TAG GAWR	GVWR ²	GCWR ²	APP. UVW	APP. NCC
DSDP 4023	425	4.88	150 gal.	276"	14,600 lb.	20,000 lb.	—	34,600 lb.	44,600 lb.	28,955 lb.	5,645 lb.
DSDP 4024	425	4.88	150 gal.	276"	14,600 lb.	20,000 lb.	—	34,600 lb.	44,600 lb.	28,930 lb.	5,670 lb.
DSDP 4035	425	4.88	150 gal.	276"	14,600 lb.	20,000 lb.	—	34,600 lb.	44,600 lb.	28,190 lb.	6,410 lb.
DSDP 4304	425	4.88	150 gal.	276" + TAG	14,600 lb.	20,000 lb.	10,000 lb.	44,600 lb.	54,600 lb.	32,030 lb.	12,570 lb.
DSDP 4317	425	4.88	150 gal.	276" + TAG	14,600 lb.	20,000 lb.	10,000 lb.	44,600 lb.	54,600 lb.	32,360 lb.	12,240 lb.
DSDP 4320	425	4.88	150 gal.	276" + TAG	14,600 lb.	20,000 lb.	10,000 lb.	44,600 lb.	54,600 lb.	32,060 lb.	12,540 lb.
DSDP 4354	425	4.88	150 gal.	276" + TAG	14,600 lb.	20,000 lb.	10,000 lb.	44,600 lb.	54,600 lb.	31,920 lb.	12,680 lb.
DSDP 4355	425	4.88	150 gal.	276" + TAG	14,600 lb.	20,000 lb.	10,000 lb.	44,600 lb.	54,600 lb.	32,240 lb.	12,360 lb.

SPARTAN MOUNTAIN MASTER CHASSIS

The Spartan Mountain Master and Mountain Master GT don't just lead the way, they pave it! Spartan's Mountain Master chassis is America's most popular, most reliable, highest-performing diesel pusher. Experience the power, the superior ride and handling and excellent driving performance your coach built on a Spartan Mountain Master chassis has to offer. The Mountain Master chassis provides excellent resale value and carries a 36-month, 50,000-mile, no-deductible warranty, which includes roadside assistance for the entire warranty period. Sit back and enjoy the ride!



Lengths, heights, widths and dry weights are approximate.

Weight will vary based on optional equipment added to the above base weight.

¹ Lengths do not include the rear ladder.

² Specifications are supplied by the chassis manufacturer.

GAWR: Gross Axle Weight Rating is the maximum permissible weight for an axle.

GCWR: Gross Combination Weight Rating is the value specified by the manufacturer of the vehicle as the maximum allowable loaded weight of this motorhome and any towed trailer or towed vehicle.

GVWR: Gross Vehicle Weight Rating is the maximum permissible weight of a fully loaded motorhome.

UVW: Unloaded Vehicle Weight is the weight of this motorhome as built at the factory with full fuel, engine oil and coolants. The UVW does not include cargo, fresh water, LP gas or dealer-installed accessories.

NCC: Net Carrying Capacity is the maximum weight of all occupants, including the driver, personal belongings, food, fresh water, waste water, LP gas, tools, tongue weight of towed vehicle, dealer-installed accessories, etc., that can be carried by the motorhome.



Dutch Star
2008 DIESEL MOTORHOME

When You Know the Difference

At Newmar, we do more than just manufacture RVs. We enhance the RV lifestyle for our customers—in everything we do. From the luxury and details we proudly build into our products, to providing responsive customer service and support. From developing industry-leading innovations, to staying loyal and true in our everyday business practices. These are our values; this is the Newmar difference. As we celebrate 40 years of high-quality Amish craftsmanship, we look forward to many more years of building products that exceed your highest expectations and deliver the durability and quality that sets us apart from everyone else.

NEWMAR CORPORATION • 355 N DELAWARE ST • P.O. BOX 30 • NAPPANEE IN 46550-0030
574-773-7791 • Fax 574-773-2895 • www.newmarcorp.com

Some features shown in our literature are optional. Colors and finishes are photographic representations. The actual materials may look different. Prices, specifications and floorplans are subject to change at Newmar's discretion, without prior notice or obligation. Please see your dealer for actual samples and specifications. © 2007 Newmar Corporation. Printed in the U.S.A. (04/07)