



# Maple Leaf Consulting Inc.

R.R. #1  
Rocky Mountain House, Alberta  
T4T 2A1

(403) 348-3458  
Fax: (403) 845-4775

February 24, 2026

Reference: **MLC-43674-2**

**COMET WELDING LTD.**  
**5604 Len Thompson Drive**  
**Lacombe, Alberta**  
**T4L 1E7**

Attention: **Devon**

## EQUIPMENT CERTIFICATION

<b>Equipment:</b>	<b>Aluminum Spreader Bar</b>
<b>Manufacturer:</b>	<b>Comet Welding Ltd.</b>
<b>Model:</b>	<b>8'-2<sup>3</sup>/<sub>4</sub>" to 13'-2<sup>3</sup>/<sub>4</sub>" 2-Piece</b>
<b>Capacity:</b>	<b>See Chart on Back</b>
<b>Serial Number:</b>	<b>MLC-17816 11/2014</b>

The above spreader bar was examined in detail on February 24, 2026 at Comet's shop in Lacombe. Visual inspections were completed on the main bar, (1) extension bar, lift lugs, and pin holes.

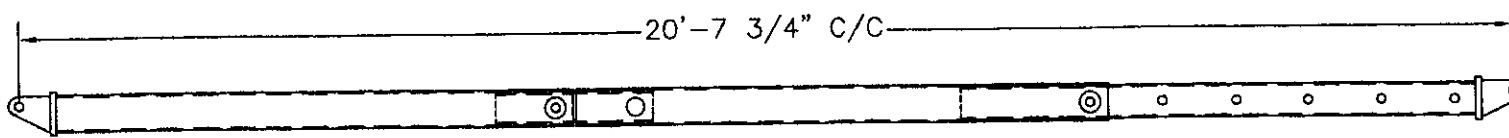
Based on the inspections, it is our opinion that the unit is safe to operate within its rated capacity when used in accordance with the manufacturers' specifications and/or industry standards.

This certification is valid for a period of 1 year or until the unit has been damaged structurally by either handling or operation. Unengineered structural modifications to this unit will void this certification.

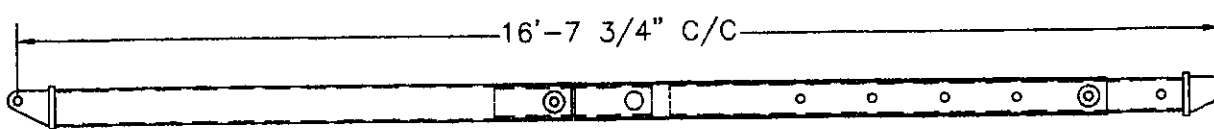
<b>PERMIT TO PRACTICE</b> <b>MAPLE LEAF CONSULTING INC.</b>
Signature <u>Everett M. Gusek, P. Eng.</u>
Date <u>February 24, 2026</u>
<b>PERMIT NUMBER: P 7117</b>
The Association of Professional Engineers, Geologists and Geophysicists of Alberta



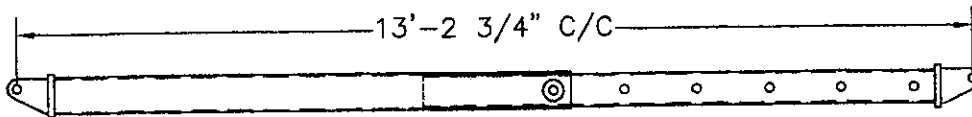
*March 6, 2026*  
M52202



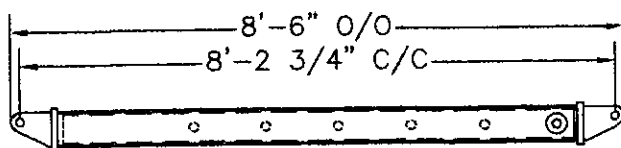
MAXIMUM CAPACITY = 8 TONS WITH MINIMUM 45° SLING ANGLE  
 MAXIMUM CAPACITY = 10 TONS WITH MINIMUM 60° SLING ANGLE



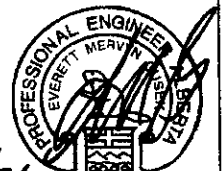
MAXIMUM CAPACITY = 16 TONS WITH MINIMUM 45° SLING ANGLE  
 MAXIMUM CAPACITY = 20 TONS WITH MINIMUM 60° SLING ANGLE




MAXIMUM CAPACITY = 16 TONS WITH MINIMUM 45° SLING ANGLE  
 MAXIMUM CAPACITY = 20 TONS WITH MINIMUM 60° SLING ANGLE



MAXIMUM CAPACITY = 30 TONS WITH MINIMUM 45° SLING ANGLE  
 MAXIMUM CAPACITY = 30 TONS WITH MINIMUM 60° SLING ANGLE



*Copy MAR 5/26 2014*

 **Maple Leaf Consulting Inc.**  
 PH: 403-348-3458  
 FAX: 403-845-4775

<b>COMET WELDING</b>		
<b>ALUMINUM SPREADER BAR RATINGS</b>		
SCALE: N.T.S.	DATE: NOV. 2014	REVISION NO.: 0
DRAWN BY: EMG	APPROVED BY:	DRAWING #: MLC22061
PREPARED BY: MAPLE LEAF CONSULTING INC.		