



SEDE LEGALE E OPERATIVA
Via dell'Industria, 34
41013 Castelfranco Emilia (MO)
Tel. 059/931483
Fax. 059/934307
info@snowservicesrl.com
P.IVA-C.Fisc. 03417630369



MIP 4000 UNIMOG



READ THE INSTRUCTION
BEFORE USING THE EQUIPMENT

TURN THE EQUIPMENT OFF
TO MAINTENANCE

ITALIANO
Istruzioni originali

INSTRUCTION AND MAINTENANCE MANUAL SPECIFICATIONS AND SPARE PARTS CATALOGUE



1. INTRODUCTION

Thank you for your decision to purchase a Snow Service Spreader.

This manual, prepared by the manufacturer based on the provisions of **EEC Directive 2006/42/EC** (Machine Directive), is aimed to inform the user about the correct use and maintenance of the arm BLT 8000.

You must read this manual fully prior to starting work or before performing any maintenance operation.

For any necessary additional clarification or for spare parts requests, always refer to the identifying information on the next page to facilitate our technical service.

Please keep this manual with your machine at all times as reference for immediate consultation in case of problems or uncertainties.

The user is not allowed to tamper or remove either protections or other parts of the arm : any change will immediately void our Statement of compliance prepared according to the provisions of **EEC Directives** and void the warranty.

The manufacturer may not be held liable for accidents if the arm is altered, tampered or deprived of fixed and removable protections or if it is used for purposes not intended by the manufacturer

Note: We require that you read and understand the contents of this manual **COMPLETELY**, especially the chapter on **SAFETY**, before attempting any procedure contained in this manual. The manual should be kept with your machine at all times.



CAUTION!

- This symbol is used to highlight operations or actions that may cause physical harm to the operator or to other
- When this symbol appears read the instructions with special care and follow them scrupulously

1.1 Generality

This manual refers to:

TYPE: **MIP**

MODEL: **4000**

This manual contains the principle information, which you find in the table of contents; it's a part of the machine and you have to keep it with your machine at all times, on the one hand till to the dismantling, on the other hand for future updates.

In case of damage or loss of the manual, you can request a copy to the



SEDE LEGALE E SEDE OPERATIVA
VIA DELL'INDUSTRIA N°34, PIUMAZZO
41013 CASTELFRANCO E. (MO)- ITALY
TEL./FAX +39 059931483-059/934307
P.IVA E C.FISCALE 03417630369
E-MAIL: INFO@SNOWSERVICESRL.COM

You have only to specify the type, model, and serial number of your machine. (You will find all these details on the identification plate located on attachment plate of the MIP .

The manufacturer chose as official language: Italian.

Snow Service Srl did not take charge of translation in other languages, which not comply with the original text in Italian.

This manual is current at the time of the furniture of the machine; hence, you cannot retain this manual unsuitable just because subsequently updated according to new studies and experiences. Some parts may change to assure top performance.

In the future, you can receive reviews and amendments for integrating and considering the amendments.

The Company reserves the right to make improvements or changes in its equipment at any time without obligation of the Company to install such improvements or changes on equipment previously manufactured by the Company.

Consider advisory of machine- amendments or manual updates as a form of kindness. Snow Service- customer service is always at your disposal to supply information regarding machine updates, which applied the Company.

1.2 General information relating to the use of the machine

This Operator's Manual is mean for personnel that are operating with the MIP and are responsible for its daily maintenance. Following it carefully can greatly increase the performance and life of your arm.

For this reason, read and observe the following precautions before operating with the arm. The machine should be operated only by those who have read the Owners Manual, and are thus qualified to do so.

The frequency of inspection and maintenance procedures prescribed by the manual are always intended as the minimum necessary to ensure the efficiency, safety, durability of the machine in normal working conditions, supervision should still be consistent, and in case of anomaly, you have to take immediate action. NEVER service arm while in operation. Stop engine.

All routine maintenance, inspections, and lubrication must be performed with the machine turned off and disconnected from every power supply (electricity and other forms).

WARNING: Any alteration or tampering, unauthorized by the manufacturer, on the machine or on the safety systems, will immediately void our Statement of compliance prepared according to the provisions of **EEC** Directives and void the warranty.

1.3 General precaution regarding to the use of the machine

The present manual describes the normal behavior that operators must take towards the machine. During design and construction of the machine, the manufacturer has considered all these notes for the conductor. It is user's duty to inform (delivering this manual) and train workers (drivers and maintenance staff) so that all operators are informed about these instructions before starting with spreaders use.

- Whereas is expected a safety selector or a safety lock with a key, maintainers and operators are required to remove the key and store it by themselves or in a restrict area.
- During the lubricant changing use always protective clothing and gloves (oil resistant) and wash your hands after that with soap and water.
- Clean immediately, any oil or grease stains on the floor to avoid to fall down.
- Unauthorized personnel are not allowed to work on the machine.
- Do not start a malfunctioning machine.
- Make sure that all unsafe conditions have been properly removed before using the machine.
- Make sure that all safety guards and protective devices are in place.
- Be sure that all foreign objects are kept away from the working area.
- Use safety devices, prescribed in section 3.2, in case of: normal use or maintenance service.
- Use protective clothing, gloves and safety glasses whererequired (for example glasses with side shields, helmets, or gloves).
- Use protective clothing or gloves if you work with hot material, to avoid burns in case of manual intervention.
- Spreader operation (for example connection works, activation of the spreader, maintenance, measurements and adjustments of the electrical equipment or of its components), should be operated only by qualified employees.

2. Presentation

2.1 Expected use

The machine cannot operate independently; it must be installed on means of transport (dump truck with suitable capacity and dimensions). The arm described in this manual is used to wash road sign and street to spread salt, sand, and fine gravel on courtyards, sidewalks, boulevards, streets, parking lots, parks, etc.

You should mount this type of spreader on truck bodies with a suitable capacity and dimension.

For other installations, you must obtain **the permission of the manufacturer**.

During the use, it is recommended not to exceed a speed of 30 km/hour.

For the right conditions of use please look on paragraph 2.5 "Technical details and specification", furthermore you have to respect the principle of operation.

2.2 Identifying information

The exact quote of type, serial number and year of construction will facilitate the identification of the machine and you will receive fast and accurate answers to all your questions.

Always consult this information when you contact Customer Service or ask for spare parts.

You find the position of the plate indicated in the picture to the side.

You find all these information on the plate mounted on your arm.

For no reason you are authorized to change the dates on your plate.

You should communicate the serial number, whenever you call the manufacturer for information or for ordering spare parts.

CAUTION!

Do not damage the information shown on the identification plate for any reason.

The plate with the identifying information is located on the hopper support.



Legend:

1. Name and address of manufacturer
2. **EC** trademark certifying compliance with Directive and following amendments
3. Machine model
4. Type of machine
5. Serial number of the machine
6. Weight of the machine
7. Year of manufacture

Please note: Do not remove the identification plate from the machine; it is an integral part of the same

2.3 Principle working

The manufacturer designed and realized this type of arm with the intention to facilitate the washing operation

The principle of working is:

- Spry water
- Spry deicing material

2.4 Characteristics

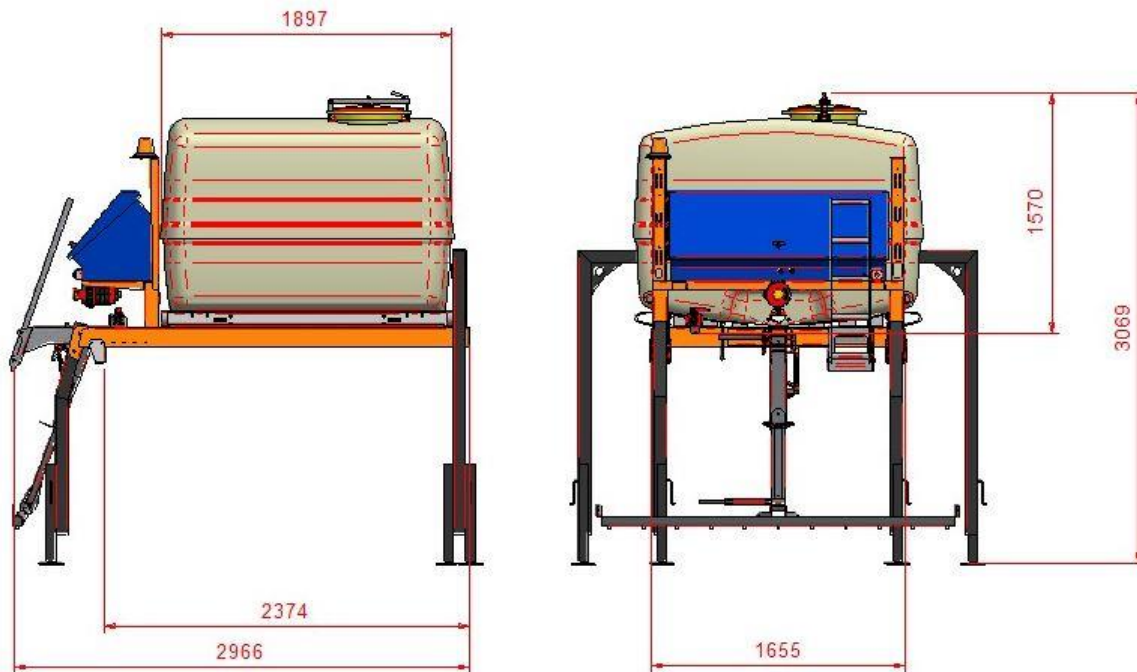
The machine was designed for working in external locations. It is expected one operator for the correct operation. (You need only one operator, thereafter you have completed the mounting process)

It is an individual decision of the supervisor of the company to use more operators during the spraying process.

Only authorized operators should drive the truck and, furthermore, they must read this manual fully prior to starting work.

2.5 TECHNICAL DETAILS AND SPECIFICATIONS

2.5.1 Dimensions



Structure and material

- Frame in steel
- Tank in fiber glass
- Spry bar in stainless steel

MOUNTING THE EQUIPMENT ON THE TRUCK

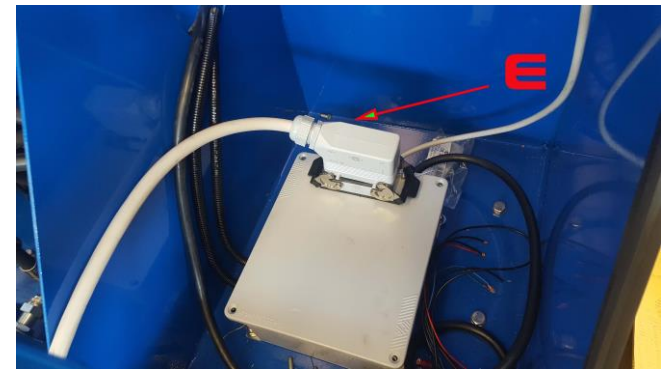


1. Mount the equipment on the platform
2. Fix the equipment with chain or tie
3. Connect the electric pin to the battery (24 V)
4. Connect the hydraulic pin to hydraulic system (big one) – for a good operating of the pump use the big hydraulic circuit (oil 50 lt/min)

5. Bring the remote control inside the cabin
REMOTE CONTROL CONNECTION



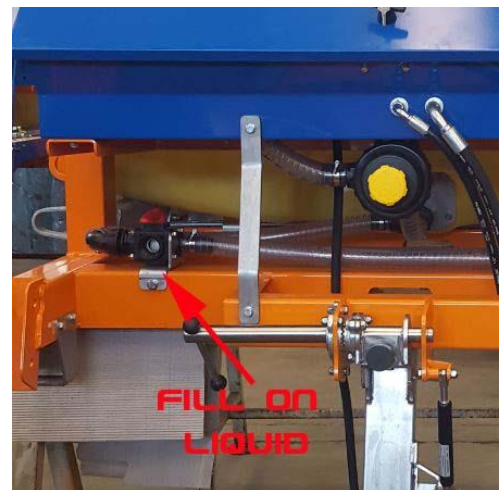
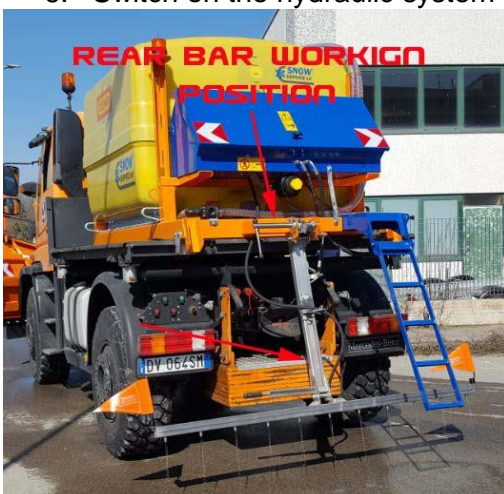
DON'T SWITCH ON THE PUMP WITHOUT P CONNECTION



USE THE EQUIPMENT

After the installation you can start work

1. Control that all the connection are ok
2. Control that the fixing of the equipment is ok
3. Fill on the liquid inside from the rear valve
4. Move the spreading bar in working position, max 30 cm from the ground
5. Switch on the truck engine
6. Switch on the hydraulic system





1. Pressure gauge
2. Electric fuse
3. On/off pump (open the oil valve from the hydraulic system of the truck to the pump)
4. Potentiometer (regulate the oil flow to the pump) rpm = liquid flow
5. Main switch (on/off all the system)
6. Water valve exhaust in tank (use only when pump start)
7. Pressure regulator

8. On/off liquid to the spray bar

SEQUENCE OF OPERATION WITH REMOTE CONTROL

1. Switch on the main switch (nr.5)
2. The switch (nr.6) must be in on (because the pump, when start, must not be under pressure)
3. Switch on the switch nr.3 (the pump start to run)
4. After 10 second switch of the switch nr.6
5. Regulate the oil flow from hydraulic system to the pump with the potentiometer (this mean much oil flow much liquid flow, less oil flow less liquid flow)
6. Switch on the switch nr. 8 to start to spray liquid on the ground
7. Regulate the pressure with the switch nr.7
8. When you finish to work
9. Switch off the switch nr.8
10. Switch on the switch nr.6
11. Switch off the switch nr.3
12. Switch off the switch nr.5

MAINTENANCE AND CHECK

BEFORE EACH USE CHECK:

1. Clean filter
2. Check liquid connection
3. Check hydraulic connection
4. Check oil pump, must in level
5. Check electric connection

