

# **BROUSSON**

## **INSTALLATION MANUAL**



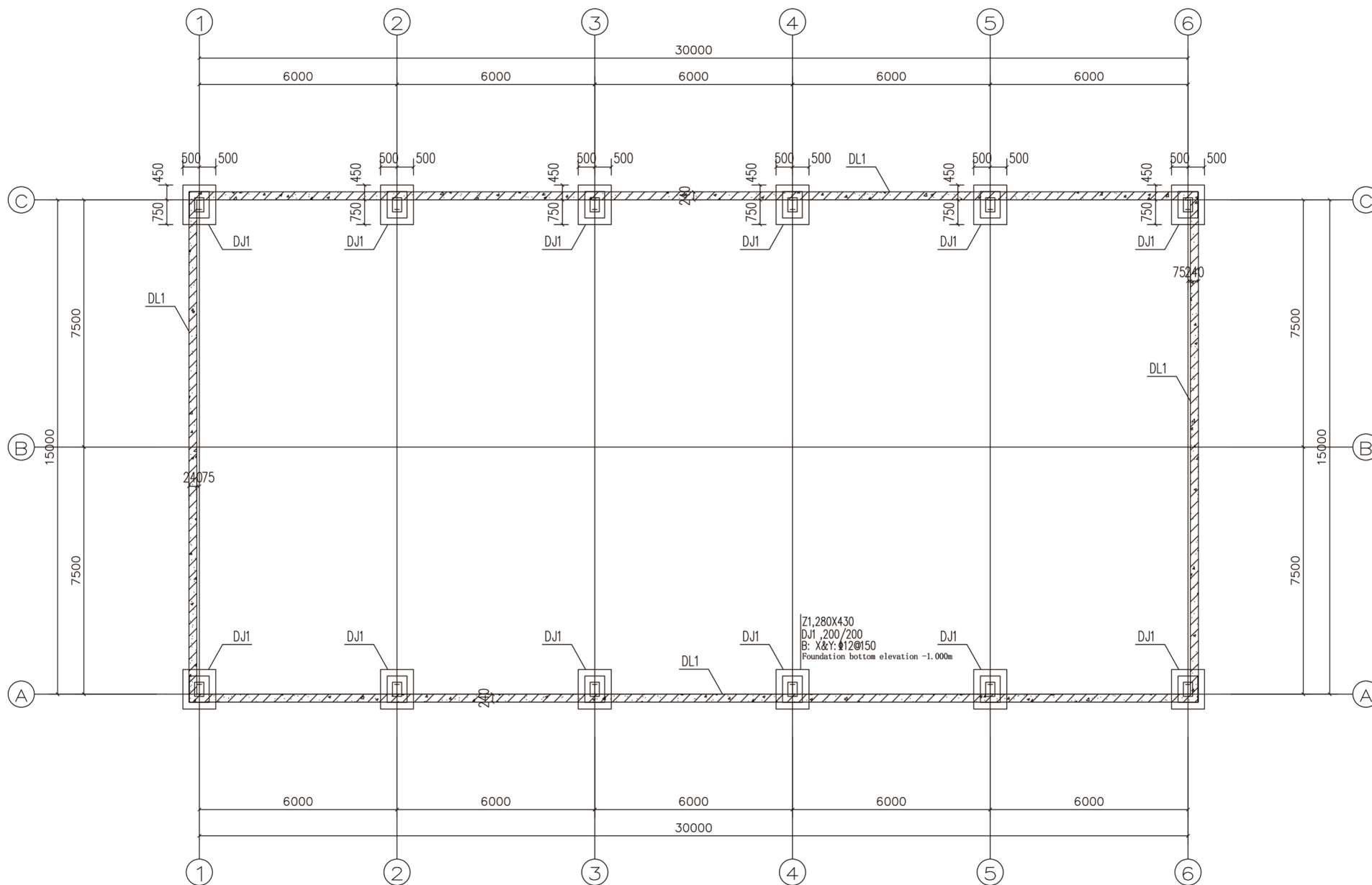
L100FT × W50FT × H18FT standard model

Installation Manual

## L100FT x W50FT x H18FT STANDARD GOODS LIST

serial number	Component Number	Main component model	length	quantity	remark
1	ZF1	PL6*60	60	48piece	shim
2	ZF2	PL20*60	60	48piece	shim
3	ZF3	PL6*170	320	1piece	Pre-embedded template
4	GL5(4 pieces)	HN300*150	7242	4unit	
5	GL6(2 pieces)	HN300*150	7242	2unit	
6	GL7(2 pieces)	HN300*150	7242	2unit	
7	GL8(2 pieces)	HN300*150	7242	2unit	
8	GL9(2 pieces)	HN300*150	7242	2unit	
9	GZ5(4 pieces)	HN300*150	4506	4unit	
10	GZ6(2 pieces)	HN300*150	4506	2unit	
11	GZ7(2 pieces)	HN300*150	4506	2unit	
12	GZ8(2 pieces)	HN300*150	4506	2unit	
13	GZ9(2 pieces)	HN300*150	4506	2unit	
14	SC1(8 pieces)	075*2.5	6538	8unit	
15	ZC1(8 pieces)	075*2.5	5977	8unit	
16	10.9s high-strength bolt	M16	45	32set	for supporting
17	10.9s high-strength bolt	M20	75	144set	Used for steel columns and beams
18	Ground anchor bolt	M24	800	48unit	
19	Foot nut	M24		144piece	
20	Installation Manual			1copy	

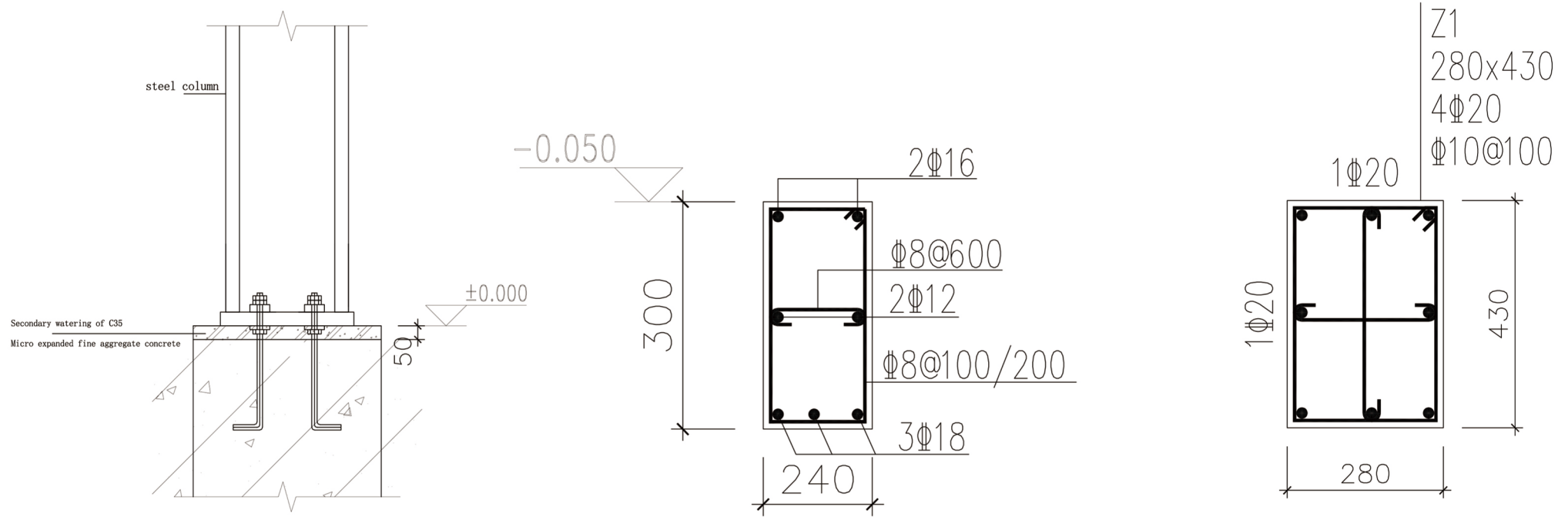
Project Name	L100FT x W50FT x H18FT standard model	Name		Project Number	1
mapping				proportion	1:75
proofread		Figure name	cargo list	drawing number	
Approved				edition	0



This project adopts an independent foundation,  
 The uncorrected characteristic value of foundation bearing capacity  $f_{ak}=200\text{kPa}$ .  
 Steel basket HRB 400(Φ);  
 Concrete: The foundation is C30,  
 and the base layer is 100mm thick C15 plain concrete (with a foundation extension of 100mm).

Basic Layout Plan

Project Name	L100FT x W50FT x H18FT standard model	Name		Project Number	1
mapping				proportion	1:75
proofread		Figure name	cargo list	drawing number	
Approved				edition	0

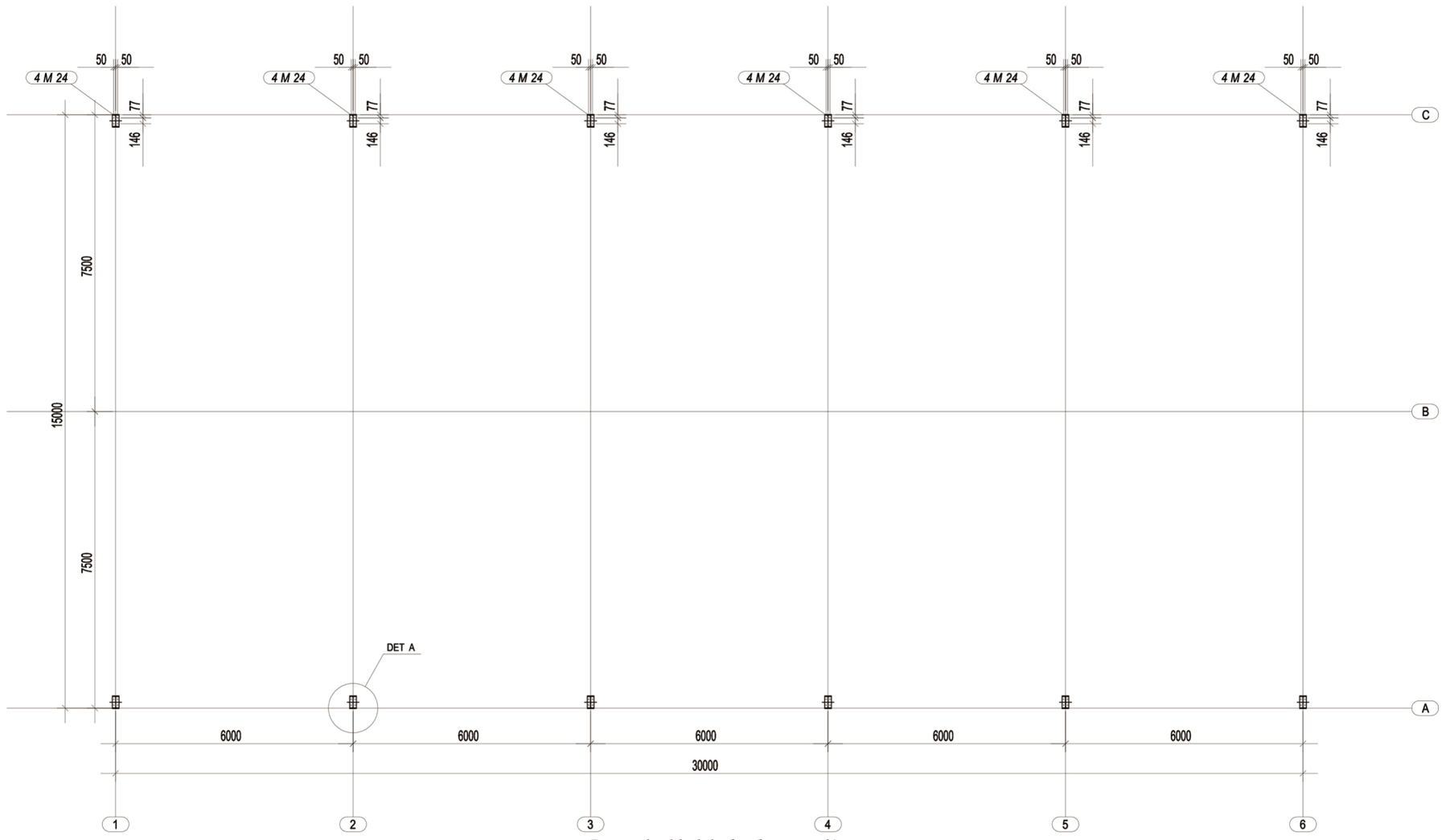


Protective measures for exposed column base

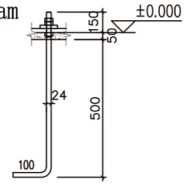
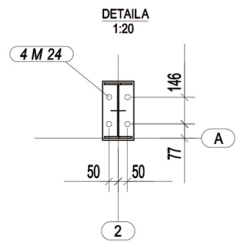
Note: Construction should be carried out in conjunction with components such as flooring, ground ring beams, and outdoor sprinkler systems.

DL1

Project Name	L100FT x W50FT x H18FT standard model	Name		Project Number	1
mapping				proportion	1:75
proofread		Figure name	cargo list	drawing number	
Approved				edition	0

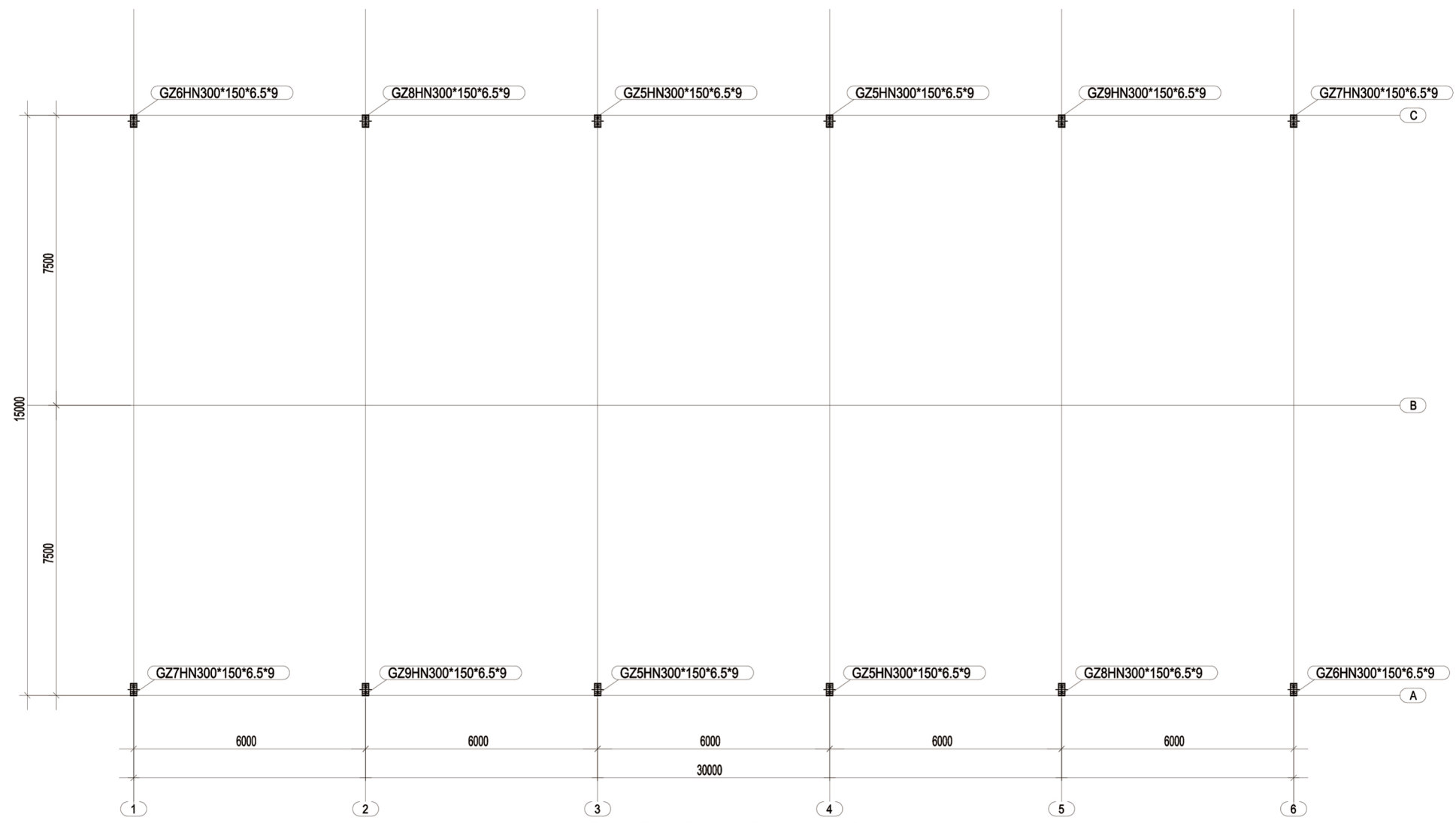


Pre embedded bolt layout diagram



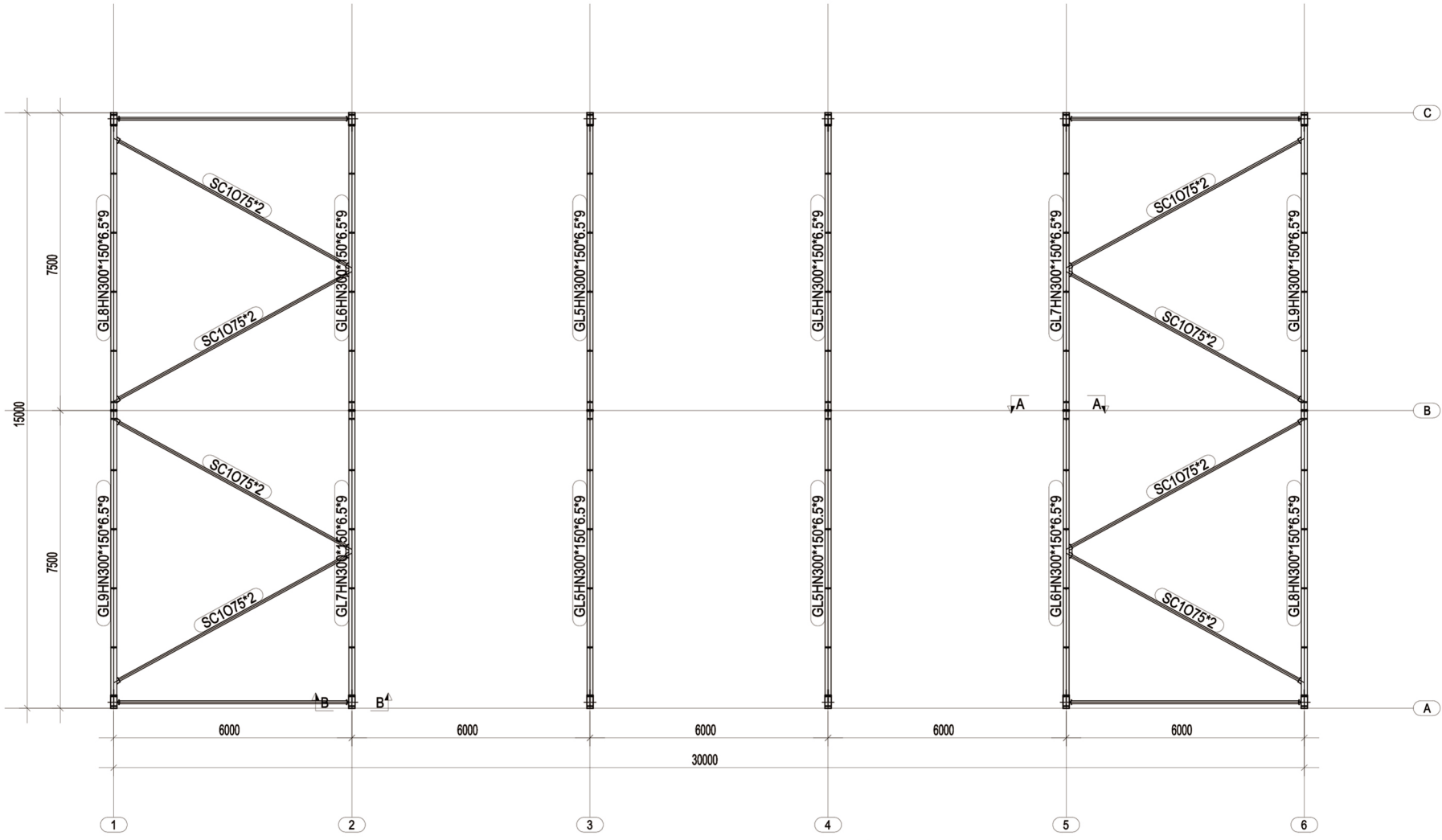
M24 Anchor Bolt Detail  
Q235B

Project Name	L100FT x W50FT x H18FT standard model	Name		Project Number	1
mapping		Figure name	cargo list	proportion	1:75
proofread				drawing number	
Approved				edition	0

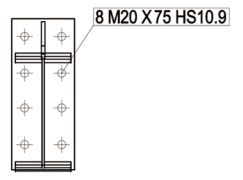


Steel column layout plan

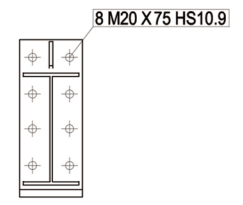
Project Name	L100FT x W50FT x H10FT standard model	Name		Project Number	1
mapping				proportion	1:75
proofread		Figure name	cargo list	drawing number	
Approved				edition	0



Roof structure layout plan

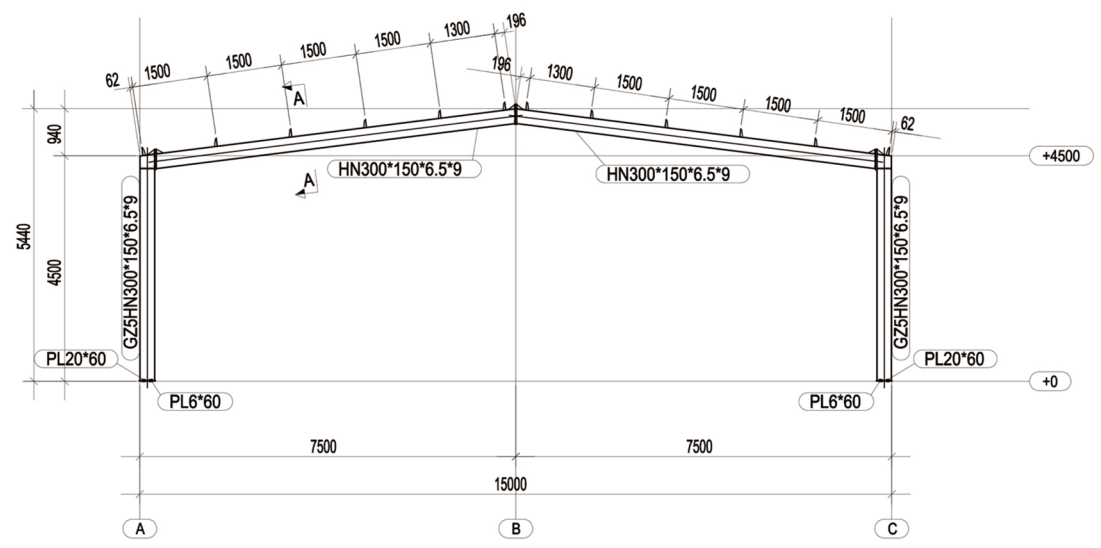


A- A

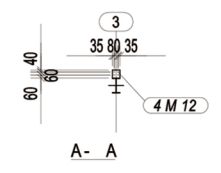


B- B

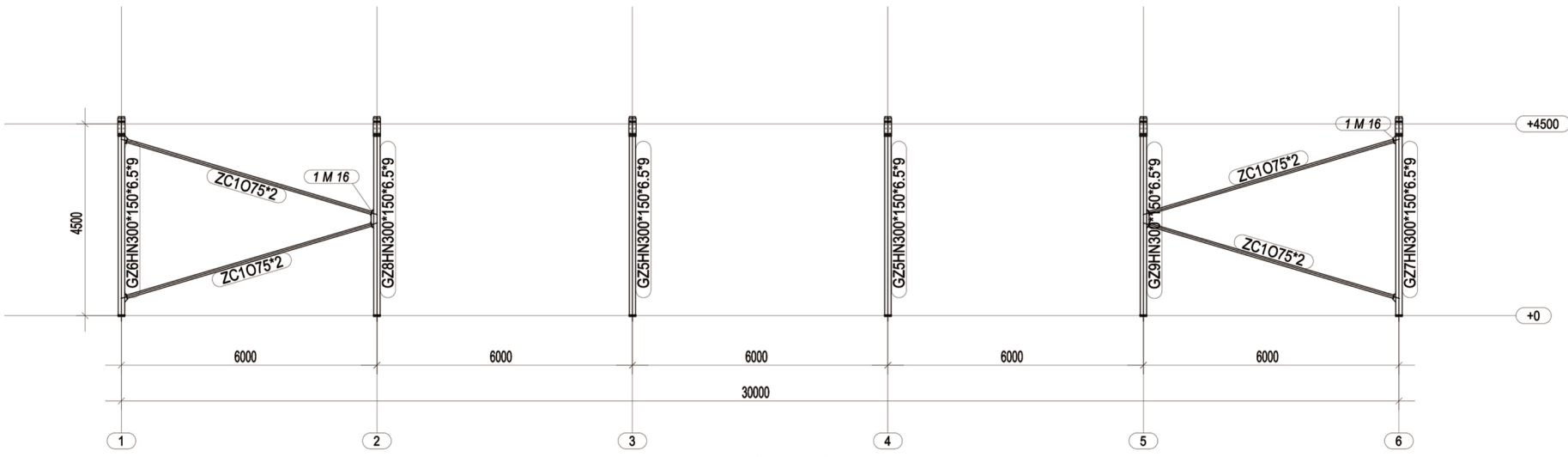
Project Name	L100FT x W50FT x H18FT standard model	Name		Project Number	1
mapping		Figure name	cargo list	proportion	1:75
proofread				drawing number	
Approved				edition	0



1-axis elevation view

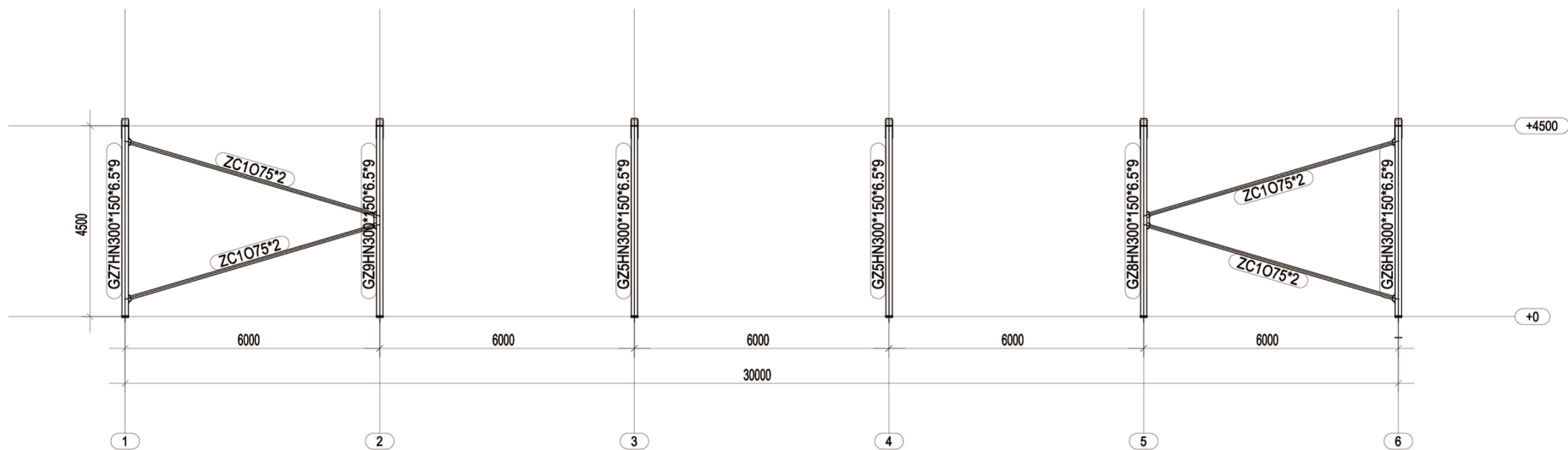


Project Name	L100FT x W50FT x H18FT standard model	Name		Project Number	1
mapping		Figure name	cargo list	proportion	1:75
proofread				drawing number	
Approved				edition	0



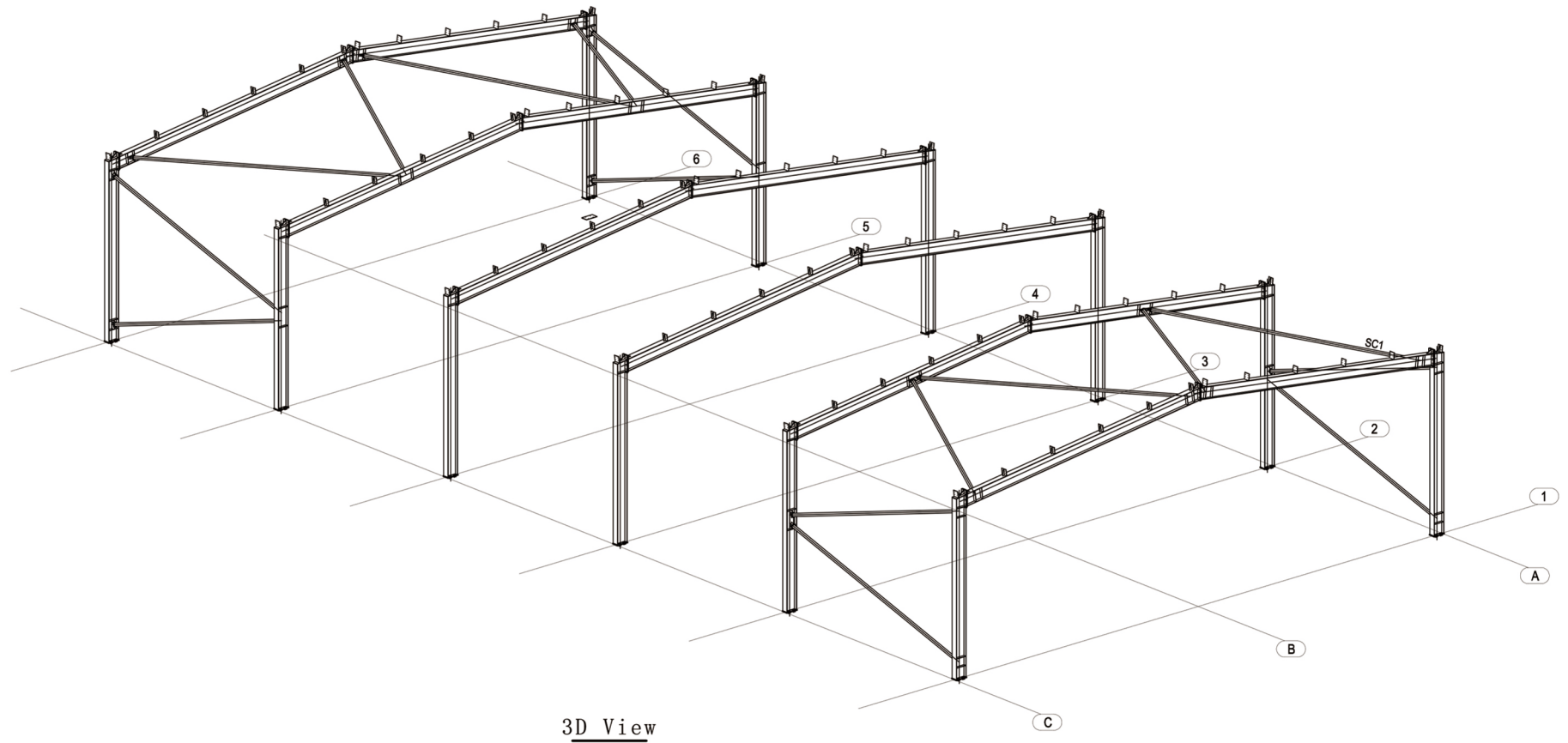
A-axis elevation view

Project Name	L100FT x W50FT x H10FT standard model	Name		Project Number	1
mapping		Figure name	cargo list	proportion	1:75
proofread				drawing number	
Approved				edition	0



C-axis elevation view

Project Name	L100FT x W50FT x H10FT standard model	Name		Project Number	1
mapping		Figure name	cargo list	proportion	1:75
proofread				drawing number	
Approved				edition	0



3D View

Project Name	L100FT x W50FT x H18FT standard model	Name		Project Number	1
mapping				proportion	1:75
proofread		Figure name	cargo list	drawing number	
Approved				edition	0