



VITAL NDT INSPECTION LTD.

Field Inspection Report

Tharrow Crane Ltd
2895 Gunn Rd
Prince George, BC
V2N 2H8

Date: May 13, 2025
File Number: VNDT-1050
Po No: Unit-06

Attention: Glenn Lafleche

Inspection Location: Tharrow Crane Shop
Inspection of: Ferrari Articulating Crane
Owner: Tharrow Crane Ltd

Serial Number: 96058

Model Number: C990

Unit Number: 06

Scope

Visual and magnetic particle inspection were performed on accessible structural components on the above-described articulating crane, based on annual inspection criteria outlined in ASME B30.22-2005 "Articulating Boom Cranes" and the applicable OH&S regulation. The specific components inspected, and inspection results were as follows:

Component	Accept	Reject	Comments
1. Outriggers(X2)	X		
2. Stabalizers (X2)	X		
3. Main Frame	X		
4. Turret	X		
5. Main Boom Section	X		
6. Articulating Boom Section	X		
7. First Hydraulic Boom Section	X		
8. Second Hydraulic Boom Section	X		
9. Third Hydraulic Boom Section	X		
10. Fourth Hydraulic Boom Section	X		
11. Fifth Hydraulic Boom Section	X		
12. Sixth Hydraulic Boom Section	X		
13. Seventh Hydraulic Boom Section	X		
14. Boom Tip Section	X		
15. Swivel Hook	X		15 Ton

Equipment Used

Equipment Details: A/C Yoke

Manufacturer: Parker Research

Model Number: B-300

Serial Number: 31501

Calibration Date: October 11, 2024

Consumables Used: Dry Visible

Manufacturer: Magnaflux

Make: #1 Gray

Batch Number: 24F009

Note: Following the annual structural inspection no defects were noted open to the surface, an inspection decal has been affixed dated May 13, 2025.

Inspection Personnel:

Paul Hilland
CAN/CGSB MT2/PT2(25769)
CWB VT2 (19415)

Vital NDT Inspections Ltd. assumes no responsibility for client decisions regarding engineering, manufacturing, repair, or usage based on data provided. Services are performed with industry-standard care and skill. No other warranties or liabilities, expressed or implied, are provided

nick@vitalndt.com

(250)981-1774

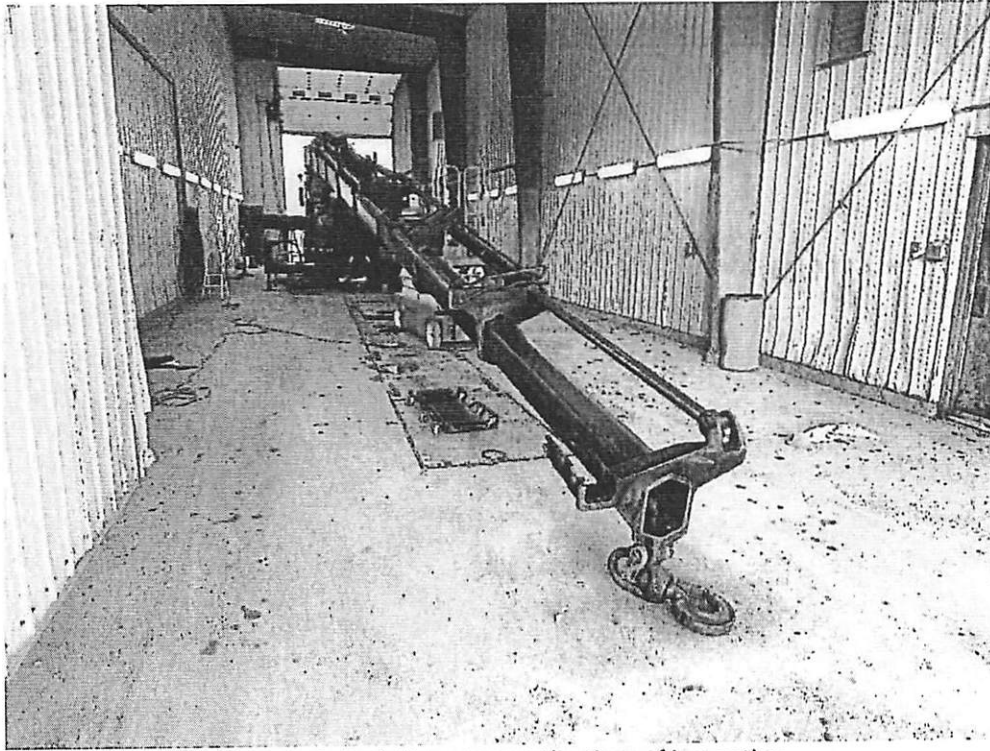


Figure 1. Articulating crane at the time of inspection.

GREUTER ENGINEERING LTD.

INSPECTION | NON-DESTRUCTIVE TESTING | CERTIFICATION

Certification Report

May 13, 2025

File: GE-2788-13

Ref: VNDT-1050

Tharrow Crane Ltd.
2895 Gunn Road
Prince George, BC V2N 2H8

Attention: Glenn Lafleche

Re: Certification of a Ferrari Articulating Crane

Model: C990

Serial: 96058

Unit: 06

Structural Inspection

Visual inspection and magnetic particle testing were performed on the accessible structural components of the above-described equipment by Vital NDT Inspections personnel. Reference Vital NDT Inspections report VNDT-1050 dated May 13, 2025 for complete structural inspection findings. No structural repairs are required at this time.

Mechanical and Controls Inspection

The mechanical and control systems were inspected by Crane Rail & Utility Specialist personnel. Reference inspection report dated April 30, 2025 for complete mechanical/controls inspection findings. Greuter Engineering has received the inspection documentation and judged it acceptable.

Certification

Annual inspections were performed in accordance with ASME B30.22-2005 "Articulating Boom Cranes" and the applicable occupational health and safety regulations. Based on the inspection findings the equipment is judged to be safe for use. Stability testing documentation by Kova Engineering, reference drawing no. P6059-2.

The equipment shall be inspected, operated, and maintained in accordance with the manufacturer's instructions, applicable codes and standards, and OH&S regulations. All structural repairs or modifications to the equipment must be approved in writing by Greuter Engineering prior to the work being performed. Any unauthorized repairs or modifications, or the equipment being involved in a misadventure will immediately void this certification.

Next Inspection Due: May 13, 2026

Regards,

Greuter Engineering Ltd. (EGBC Permit No. 1002364)



Nick Greuter, P.Eng.
CWB Visual 3 (11740)
CGSB MT 2 | PT 2 (17490)

CRANE M/N#: FERRARI F990 - A8 LOAD CHART

2.77 4.51 6.22 7.99 9.94 11.86 13.81 15.58 17.83 19.81 (METERS)
9.1' 14.8' 20.4' 26.2' 32.6' 38.9' 45.3' 51.1' 58.5' 65.0' (FEET)

OUTRIGGER SPAN CONFIGURATION

CRANE = FULL SPAN
AUXILIARY = FULL SPAN

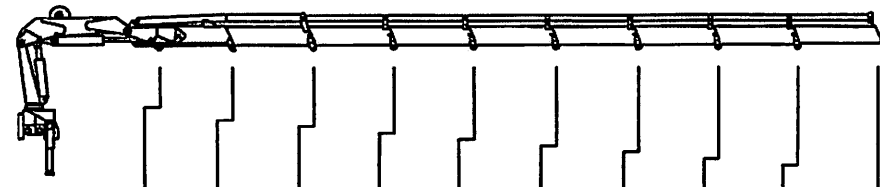
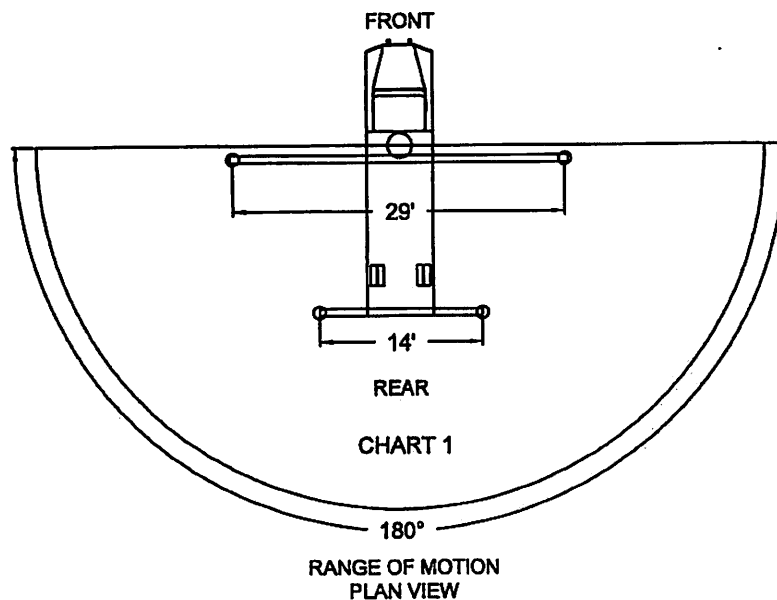
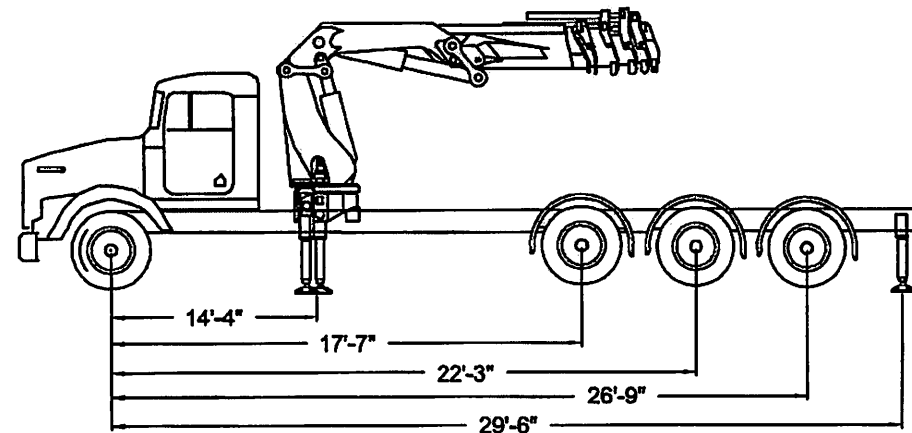


CHART 1 (Kg)	22,000	14,750	10,350	7,650	5,900	4,770	3,920	3,320	2,880	2,580
CHART 1 (lbs)	48,500	32,520	22,820	16,870	13,010	10,520	8,640	7,320	6,370	5,690



18/12/2017

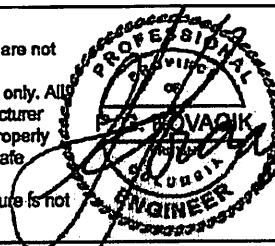
Kovo Engineering B.C. Ltd.

KE

CHART 1 IS BASED ON STRUCTURE

THIS CHART IS BASED ON SAE J765 OCT 1980
& USES THE FOLLOWING CODES AS A GUIDE
ASME B30.22-2000

1. The charts listed are for use with the crane and truck combinations listed and are serial number specific. They are not to be used for any other cranes or trucks.
2. These charts are to indicate safe stability configurations only. All other safe operations procedures from the crane manufacturer must be followed. The crane must only be operated by properly trained and qualified personnel. We are not liable for unsafe operations.
3. The structural integrity of the crane mount support structure is not included in this engineering certificate.



PROJECT: STABILITY TEST OF FERRARI ARTICULATING CRANE

CRANE: FERRARI M/N: F990 A8 S/N: 98058
TRUCK: FREIGHTLINER VIN: 5KKRALCK67PY55711

TEST DATE : DEC. 04, 2017
CLIENT: THARROW CRANE

ENGINEER: G.KOVACIK [CHECKED] MDH DRAWN: J.BROWN

SCALE: NTS

PAGE NO.: 1 OF 1

DWG. NO.: P6059-2

