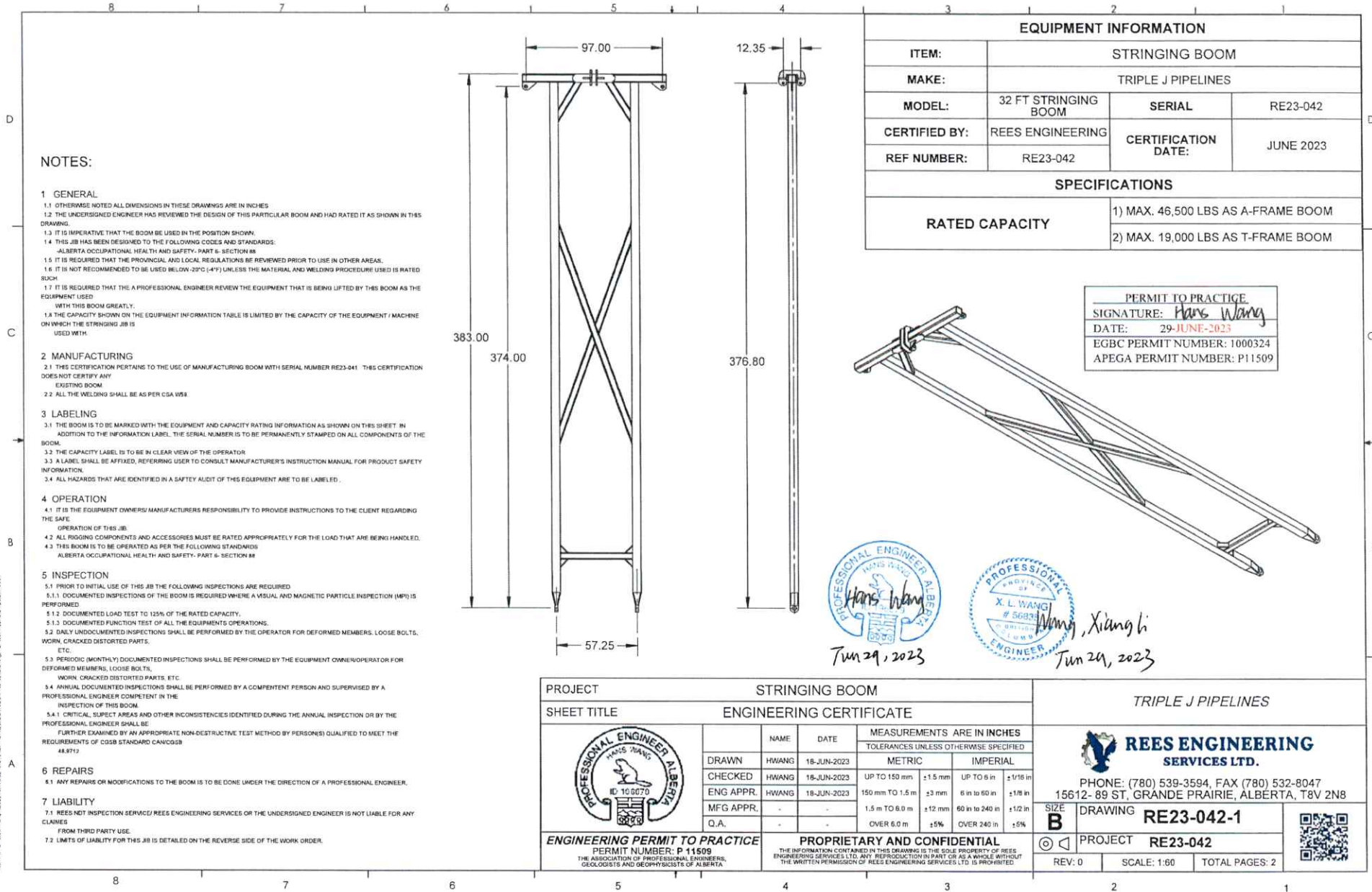


955



**NOTES:**

- 1 GENERAL
  - 1.1 OTHERWISE NOTED ALL DIMENSIONS IN THESE DRAWINGS ARE IN INCHES
  - 1.2 THE UNDERSIGNED ENGINEER HAS REVIEWED THE DESIGN OF THIS PARTICULAR BOOM AND HAD RATED IT AS SHOWN IN THIS DRAWING.
  - 1.3 IT IS IMPERATIVE THAT THE BOOM BE USED IN THE POSITION SHOWN.
  - 1.4 THIS JOB HAS BEEN DESIGNED TO THE FOLLOWING CODES AND STANDARDS:
    - ALBERTA OCCUPATIONAL HEALTH AND SAFETY- PART 6- SECTION 88
  - 1.5 IT IS REQUIRED THAT THE PROVINCIAL AND LOCAL REGULATIONS BE REVIEWED PRIOR TO USE IN OTHER AREAS.
  - 1.6 IT IS NOT RECOMMENDED TO BE USED BELOW -20°C (-4°F) UNLESS THE MATERIAL AND WELDING PROCEDURE USED IS RATED SUCH.
  - 1.7 IT IS REQUIRED THAT THE A PROFESSIONAL ENGINEER REVIEW THE EQUIPMENT THAT IS BEING LIFTED BY THIS BOOM AS THE EQUIPMENT USED WITH THIS BOOM GREATLY.
  - 1.8 THE CAPACITY SHOWN ON THE EQUIPMENT INFORMATION TABLE IS LIMITED BY THE CAPACITY OF THE EQUIPMENT / MACHINE ON WHICH THE STRINGING JOB IS USED WITH.
- 2 MANUFACTURING
  - 2.1 THIS CERTIFICATION PERTAINS TO THE USE OF MANUFACTURING BOOM WITH SERIAL NUMBER RE23-041 THIS CERTIFICATION DOES NOT CERTIFY ANY EXISTING BOOM.
  - 2.2 ALL THE WELDING SHALL BE AS PER CSA W58.
- 3 LABELING
  - 3.1 THE BOOM IS TO BE MARKED WITH THE EQUIPMENT AND CAPACITY RATING INFORMATION AS SHOWN ON THIS SHEET IN ADDITION TO THE INFORMATION LABEL. THE SERIAL NUMBER IS TO BE PERMANENTLY STAMPED ON ALL COMPONENTS OF THE BOOM.
  - 3.2 THE CAPACITY LABEL IS TO BE IN CLEAR VIEW OF THE OPERATOR.
  - 3.3 A LABEL SHALL BE AFFIXED, REFERENCING USER TO CONSULT MANUFACTURER'S INSTRUCTION MANUAL FOR PRODUCT SAFETY INFORMATION.
  - 3.4 ALL HAZARDS THAT ARE IDENTIFIED IN A SAFETY AUDIT OF THIS EQUIPMENT ARE TO BE LABELED.
- 4 OPERATION
  - 4.1 IT IS THE EQUIPMENT OWNERS/ MANUFACTURERS RESPONSIBILITY TO PROVIDE INSTRUCTIONS TO THE CLIENT REGARDING THE SAFE OPERATION OF THIS JOB.
  - 4.2 ALL RIGGING COMPONENTS AND ACCESSORIES MUST BE RATED APPROPRIATELY FOR THE LOAD THAT ARE BEING HANDLED.
  - 4.3 THIS BOOM IS TO BE OPERATED AS PER THE FOLLOWING STANDARDS
    - ALBERTA OCCUPATIONAL HEALTH AND SAFETY- PART 6- SECTION 88
- 5 INSPECTION
  - 5.1 PRIOR TO INITIAL USE OF THIS JOB THE FOLLOWING INSPECTIONS ARE REQUIRED
    - 5.1.1 DOCUMENTED INSPECTIONS OF THE BOOM IS REQUIRED WHERE A VISUAL AND MAGNETIC PARTICLE INSPECTION (MPI) IS PERFORMED.
    - 5.1.2 DOCUMENTED LOAD TEST TO 125% OF THE RATED CAPACITY.
    - 5.1.3 DOCUMENTED FUNCTION TEST OF ALL THE EQUIPMENTS OPERATIONS.
  - 5.2 DAILY UNDOCUMENTED INSPECTIONS SHALL BE PERFORMED BY THE OPERATOR FOR DEFORMED MEMBERS, LOOSE BOLTS, WORN, CRACKED DISTORTED PARTS, ETC.
  - 5.3 PERIODIC (MONTHLY) DOCUMENTED INSPECTIONS SHALL BE PERFORMED BY THE EQUIPMENT OWNER/OPERATOR FOR DEFORMED MEMBERS, LOOSE BOLTS, WORN, CRACKED DISTORTED PARTS, ETC.
  - 5.4 ANNUAL DOCUMENTED INSPECTIONS SHALL BE PERFORMED BY A COMPETENT PERSON AND SUPERVISED BY A PROFESSIONAL ENGINEER COMPETENT IN THE INSPECTION OF THIS BOOM.
    - 5.4.1 CRITICAL, SUSPECT AREAS AND OTHER INCONSISTENCIES IDENTIFIED DURING THE ANNUAL INSPECTION OR BY THE PROFESSIONAL ENGINEER SHALL BE FURTHER EXAMINED BY AN APPROPRIATE NON-DESTRUCTIVE TEST METHOD BY PERSON(S) QUALIFIED TO MEET THE REQUIREMENTS OF COSB STANDARD CAN/COSB 48.1(F)2
- 6 REPAIRS
  - 6.1 ANY REPAIRS OR MODIFICATIONS TO THE BOOM IS TO BE DONE UNDER THE DIRECTION OF A PROFESSIONAL ENGINEER.
- 7 LIABILITY
  - 7.1 REES NOT INSPECTION SERVICE/ REES ENGINEERING SERVICES OR THE UNDERSIGNED ENGINEER IS NOT LIABLE FOR ANY CLAIMS FROM THIRD PARTY USE.
  - 7.2 LIMITS OF LIABILITY FOR THIS JOB IS DETAILED ON THE REVERSE SIDE OF THE WORK ORDER.

EQUIPMENT INFORMATION			
ITEM:	STRINGING BOOM		
MAKE:	TRIPLE J PIPELINES		
MODEL:	32 FT STRINGING BOOM	SERIAL	RE23-042
CERTIFIED BY:	REES ENGINEERING	CERTIFICATION DATE:	JUNE 2023
REF NUMBER:	RE23-042		
SPECIFICATIONS			
RATED CAPACITY		1) MAX. 46,500 LBS AS A-FRAME BOOM	
		2) MAX. 19,000 LBS AS T-FRAME BOOM	

PERMIT TO PRACTICE  
 SIGNATURE: *Hans Wang*  
 DATE: 29-JUNE-2023  
 EGBC PERMIT NUMBER: 1000324  
 APEGA PERMIT NUMBER: P11509

PROFESSIONAL ENGINEER ALBERTA  
*Hans Wang*  
 Jun 29, 2023

PROFESSIONAL ENGINEER OF  
 X. L. HWANG  
 #5683  
 Jun 29, 2023

*Wang, Xiangli*  
 Jun 29, 2023

PROJECT		STRINGING BOOM	
SHEET TITLE		ENGINEERING CERTIFICATE	
	NAME	DATE	MEASUREMENTS ARE IN INCHES
	DRAWN	HWANG	18-JUN-2023
	CHECKED	HWANG	18-JUN-2023
	ENG APPR.	HWANG	18-JUN-2023
	MFG APPR.	-	-
Q.A.	-	-	
ENGINEERING PERMIT TO PRACTICE PERMIT NUMBER: P 11509		PROPRIETARY AND CONFIDENTIAL THE INFORMATION CONTAINED IN THIS DRAWING IS THE SOLE PROPERTY OF REES ENGINEERING SERVICES LTD. ANY REPRODUCTION IN PART OR AS A WHOLE WITHOUT THE WRITTEN PERMISSION OF REES ENGINEERING SERVICES LTD IS PROHIBITED.	

TRIPLE J PIPELINES	
PHONE: (780) 539-3594, FAX (780) 532-8047 15612- 89 ST. GRANDE PRAIRIE, ALBERTA, T8V 2N8	
SIZE B	DRAWING RE23-042-1
PROJECT	RE23-042
REV: 0	SCALE: 1:60
TOTAL PAGES: 2	

SB801 - Stringing struk.



Triple J Pipelines  
44 Collins Rd. PO Box 688  
Dawson Creek, BC V1G 4H7

Owner: Triple J Pipelines  
Decal Reference: 17408924

**STRUCTURAL CERTIFICATION**

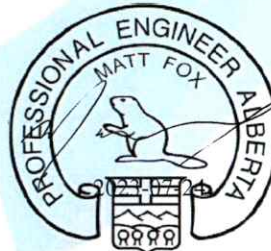
Unit Information	Inspection Information	Additional Equipment
Description: 32' Boom	Date of Inspection (M/D/Y): 07/24/2023	Block Serial Number: N/A
Make: Cat	Inspection Type: Dry MPI Visual	Jib Serial Number: N/A
Model: 32' Boom	Applicable Code: CSA Z-150	Headache Ball Serial No. N/A
Unit: STICK 01	Next Inspection (M/D/Y): 07/24/2024	Other: N/A
Serial: STICK 01		
Capacity: 140000 lbs		

At your request Sparta Engineering & Inspection has performed an inspection on the listed equipment. The inspection was conducted in accordance to the listed code and consisted of a visual and MPI unless otherwise stated. At the time of inspection there were no detected flaws or non-compliances or if there were flaws they have been sufficiently repaired and we have deemed the unit fit for continued service. If there are no incidents beforehand, the next recommended inspection date is listed above.

Sparta Engineering & Inspection does not warranty nor imply any such warranty for any inspected equipment. Sparta Engineering Inc. assumes no responsibility in the operation or performance of any equipment prior to or after the date of inspection.



Matt Fox, P Eng.  
Sparta Engineering & Inspection  
APEGA Permit # 9981



APEGA Permit P9981

