



2012 Kenworth T800 Wireline Truck – Yd 10

Unreserved public auction

# Live Online Auction

June 8, 2022 · Wednesday

[KruseEnergy.com](https://www.kruseenergy.com)



2004 Kenworth T800B Nitrogen Pumper – Yd 1



2 – G.Denver PZ-11 Triplex Mud Pumps – Yd 9

June 8, 2022

See full listings online

# Live Online Auction

*\*Scan QR code to view **Live Online Auction Equipment***

**June 8, 2022 · Wed 8:00 am CT**



Phone: **866.206.3389**



**37'L Mud Suction Tank – Yard 9**



**2013 Big Tex Lubricator Trailer – Yard 10**



**KruseEnergy.com**

## Featuring

**Drilling Equipment, Wireline Equipment,  
Construction, Crane Trucks, Pickups,  
Trucks, Trailers, Nitrogen Pump Trucks,  
Coiled-Tubing Equipment, Drilling Tubulars  
& Much More**

**Add this sale to my calendar**

## Tax notice

Purchasers who are tax exempt **MUST** provide a copy of their **SALES** and **USE TAX PERMIT** at the time of **BIDDER REGISTRATION**. The company Federal Identification Number, or for a proprietorship, the purchaser's social security number will also be required at registration.

**Bring a copy of your sales tax permit**

## Terms of sale

All bidders must register and provide proper identification.

All purchases must be **PAID IN FULL** on sale date before equipment will be released. Acceptable forms of payment include Cashier's Check, Travelers Checks, Wire Transfer or Personal/Company Check Accompanied by Bank Letter of Guarantee. No drafts will be accepted. All printed information regarding this sale is merely a guide, subject to change, and neither the auction Company, Sellers, nor Publishers shall be liable for any errors in this brochure. All items will be sold "as is, where is, with all faults" and without guarantee or warranty of any kind, either expressed or implied.



# Kruse Featured Auction

*\*scan QR code to view **Kruse Featured Auction Equipment***



**June 8, 2022 · Wed 9:00 am CT**

## Featuring

**Drilling Surplus, Handling Tools, Electric Motors, Centrifugal Pumps, Shop Tools & More**

- ▶ Our Kruse Energy Featured Auction is held on June 8th in conjunction with our Live Auction Event.
- ▶ The Kruse Energy Featured Auction acts like a traditional live online auction where the auction is open for a period of time.
- ▶ All Featured Auctions are live for a two-week period leading up to the event – the Preview Period. During the Preview Period you can set your PriorityBid. A PriorityBid Bid acts like the max bid and allows you to set your bid ahead of time.

# Kruse Energy is now Ritchie Bros. Energy

An evolution to better serve the energy industry

Kruse Energy Auctioneers is transitioning to become Ritchie Bros. Energy, and energy customers will be able to leverage the full power of the Ritchie Bros. brand and everything we offer.

## Energy sellers can take advantage of:

- ▶ Multiple disposition solutions
- ▶ Asset management services
- ▶ Inspection & appraisal services
- ▶ Industry-leading market data & insights
- ▶ Network of permanent locations & facilities
- ▶ Unmatched global reach & buyer demand

## Buyers also have more options including:

- ▶ Wider selection of equipment
- ▶ More frequent energy auctions and events
- ▶ Multiple purchasing options and platforms
- ▶ Suite of convenient buyer services
- ▶ More payment and financing options
- ▶ Full resources of our customer support team

Learn more: **KruseEnergy.com**

To create your free Ritchie Bros. account,  
call **1.800.211.3983** or visit:  
**rbauktion.com/account**



## Important Information

- Due to COVID concerns you **MUST** call ahead to schedule pick up.
- Face masks must be worn inside all Ritchie Bros. auction sites, offices, and buildings. If you do not have a face mask, one will be provided to you by Ritchie Bros. prior to entering one of our facilities.

### Yard 1 – Kruse Energy Auctioneers

6501 SW 44th St.

Oklahoma City, OK 73179

Preview Starts: May 31st, M-F, 8-4

MUST call in advance to schedule pick up | Checkout: June 8th thru June 24th M-F, 8-4

Contact: Lance Cross @ 405.596.4998 | [lcross@ritchiebros.com](mailto:lcross@ritchiebros.com) | Loadout Available Call to Confirm



2007 Kenworth T800B Nitrogen Pumper



1 of 2 – Cat D398-Kato 800KW GenSet



2007 GMC C5500

June 8, 2022

See full listings online



**1995 Leader Energy Coiled-Tubing Unit**



**2011 Peterbilt 386**



**F-1600 Triplex Mud Pump**



**Parmac 481 Brake**

## **Yard 2 – Kruse Energy Auctioneers**

509 E. CR 120

Midland, TX 79706

Preview Starts: May 31st, M-F, 8-4

MUST call in advance to schedule pick up | Checkout: June 8th thru June 24th M-F, 8-4

Contact: Tamara Casteel @ 432.813.9690 | trodriguez@kruse.com | Loadout Available Call to Confirm



**2007 Sterling LT8500 Boom Truck**



**2012 Big Tex 25 Ft GN Trailer**

June 8, 2022

[See full listings online](#)



**2012 Peterbilt PB348 Boom Truck**



**2013 Ford F550**



**2013 Forest River Travel Trailer**



**2014 Freightliner M2 106 Digger Derrick Truck**



**2016 Kawasaki Mule Pro-FXT Utility Vehicle**



**2017 Ford F350**

**June 8, 2022**

**See full listings online**

## **Yard 3**

3207 S HWY 6

Elk City, OK 73644

Preview Starts: May 31st, M-F, 8-4

MUST call in advance to schedule pick up | Checkout: June 8th thru June 24th M-F, 8-4

Contact: Loren Damron @ 580.497.6703 | Loadout Responsibility of Buyer



**1999 Kenworth T800 Winch Truck**



**2011 Valley Vessel 3000-PSI Test Separator**



**Natco 1440-PSI Flowback Test Unit**



**2014 AME 3000-PSI Test Separator**



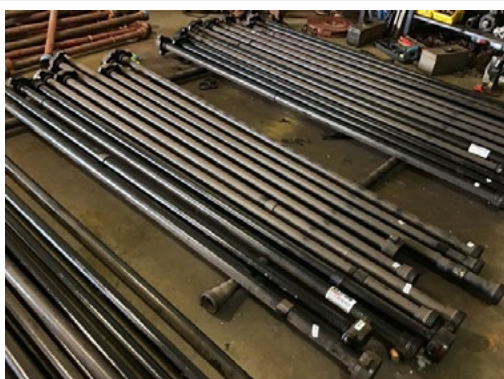
**2012 Ford F550 Flatbed**

June 8, 2022

See full listings online



**1997 Aspen 50'L Folding Neck Lowboy**



**FIG 1502 10'L Pup Joints**

## **Yard 4**

3783 W North Ave

Ponca City, OK 74601

Preview Starts: May 31st, M-F, 8-5 | MUST call in advance to schedule pick up

Checkout: June 8th thru June 24th M-F, 8-5 | Contact: Melissa Martin @ 580.762.2586

Email: Attn Melissa soonerhotoil@yahoo.com | Loadout Responsibility of Buyer



**1986 Kenworth W90 Hot Oil Truck**



**2012 Galyean 130-Bbl Vac Trailer**



**2013 Dakota Belly Dump**



**2016 Tanko 130-Bbl Vac Trailer**

## Yard 5

509 Pickett Rd  
Mineral Wells, TX 76067  
Preview Starts: May 31st, M-F, 8-4 | MUST call in advance to schedule pick up  
Checkout: June 8th thru June 24th M-F, 8-4 | Contact: GC Broadus @ 817.247.4329  
Email: gcbnco@gmail.com  
Loadout Responsibility of Buyer



1982 Ford F8000 Gin Pole Truck



Cat 342 Diesel Engine



1994 Volvo Truck Tractor

## Yard 6

4815 E HWY 80  
Midland, TX 79706  
Preview Starts: May 31st, M-F, 9-4 | MUST call in advance to schedule pick up  
Checkout: June 8th thru June 24th M-F, 9-4 | Contact: Krista Erives @ 432.269.2097  
Email: krista.erives@pxd.com | Loadout Responsibility of Buyer



Bare Pipe



FBE Line Pipe

June 8, 2022

See full listings online

## Yard 7

PIN DROP – Call for Directions; 32.018625, -101.926001

Location near 9002 FM 307

Midland, TX 79706-5114

Preview Starts: May 31st Must Call to Arrange | MUST call in advance to schedule pick up

Checkout: June 8th thru June 24th Must Call to Arrange | Contact: Krista Erives @ 432.269.2097

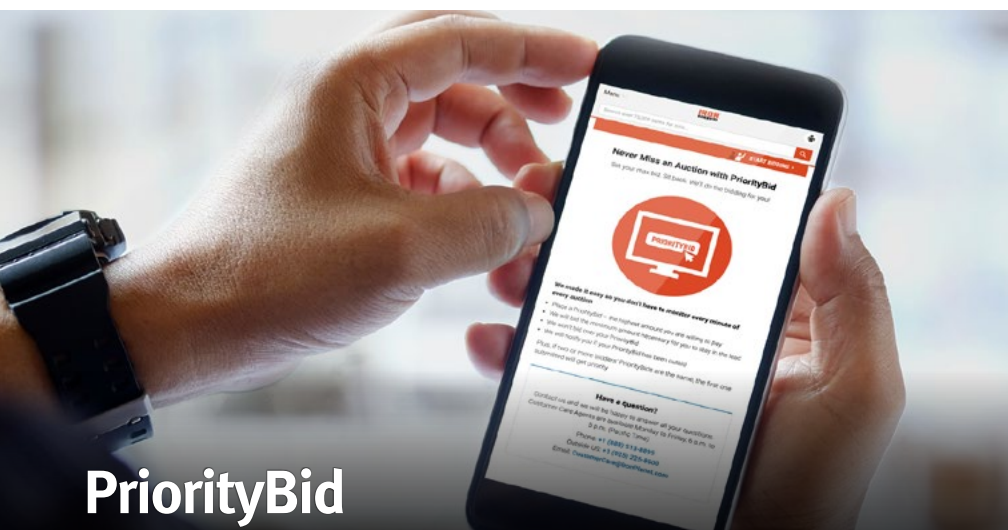
Email: [krista.erives@pxd.com](mailto:krista.erives@pxd.com) | Loadout Responsibility of Buyer



2022 ICT Horizontal Test Separator Vessel



2022 Petrosmith Test Separator Vessel



# PriorityBid

a convenient way to bid online!

[IronPlanet.com/PriorityBid](https://IronPlanet.com/PriorityBid)

June 8, 2022

See full listings online

## Yard 8

2625 County Rd 180  
Garden City, TX 79739

Preview Starts: May 31st, M-F, 9-4 | MUST call in advance to schedule pick up

Checkout: June 8th thru June 24th M-F, 9-4 Contact: Danica Duran @ 432.241.3595 or Jairo Leal @ 432.301.5874

Email: Danica.duran@pxd.com | Loadout Responsibility of Buyer



**Kase Sand Delivery System**



**Kase Sand Delivery System**

## Yard 9

509 N Price Rd  
Pampa, TX 79065

Preview Starts: May 31st BY APPOINTMENT ONLY

MUST call in advance to schedule pick up | Checkout: June 8th thru June 24th BY APPOINTMENT ONLY

Contact: Tom Petty @ 806.898.1260 | Loadout Responsibility of Buyer



**2 – C.Emsco FB-1300 Triplex Mud Pumps**



**2 – Detroit 325KW-Series-60 GenSets**



**5,580 Ft 5 In. S-135 Drill Pipe**



**37'L Mud Suction Tank**

June 8, 2022

[See full listings online](#)



**2006 ETSCO 1400 SCR House**



**Ameritech 48'L Crew House**



**Lg Qty of 4.5 to 8 in. Drill Collars**



**Lg Qty of Drilling Surplus**



**Skytop-Brewster B-1300-T Triplex Mud Pump**

June 8, 2022

See full listings online



**Lg Qty of Handling Tools**



**National 610E Electric Powered Drawworks**

## **Yard 10**

1833 FM-300

Levelland, TX 79336

Preview Starts: May 31st, M-F, 8-4 | MUST call in advance to schedule pick up

Checkout: June 8th thru June 24th M-F, 8-4 | Contact: Jeremy Cunningham @ 806.773.6523

Email: [jcunningham@roosterswireline.com](mailto:jcunningham@roosterswireline.com) | Loadout Responsibility of Buyer



**2008 Kenworth T370 Wireline Truck**



2013 Big Tex Lubricator Trailer



2008 Kenworth T370 Wireline Truck



2008 Fabrique Iron Trailer



2013 Big Tex Iron Trailer



2014 Big Tex Lubricator Trailer

June 8, 2022

See full listings online



**Cement Bond Tools**



**Lg Qty of Free Point Tools**

## **Yard 11**

Call for Directions

Riverton, WY 82501

Preview Starts: May 31st; BY APPOINTMENT ONLY | MUST call in advance to schedule pick up

Checkout: June 8th thru June 24th M-F, 8-4 | Contact: John Campbell @ 307.850.8414 or 307.856.5035; BY APPOINTMENT ONLY | Buyer Responsible for Loadout



**C.Emsco F1000.2**



**C.Emsco F1000**

## **Yard 12**

3135 Diablo Ave

Hayward, CA 94545

Preview Starts: May 31st, M-F, 8-4

MUST call in advance to schedule pick up

Checkout: June 8th thru June 24th M-F, 8-4

Contact: Stephen Rehmann @ 510.574.0570 Ext. 7

Email: stephen@stompercompany.com Loadout

Responsibility of Buyer – BY APPOINTMENT ONLY



**SuperVault MHC-D3-2,000 Fuel Tank**

### Yard 13

11551 N 1980 Rd  
Elk City, OK 73644  
Preview Starts: May 31st, M-F, 8-4  
MUST call in advance to schedule pick up  
Checkout: June 8th thru June 24th M-F, 8-4  
Contact: Mickey Weldon @ 580.334.0507  
Email: mickey@disposalsystemsllc.com  
Loadout Responsibility of Buyer



1997 National Tank 1440-PSI Test Separator

### Yard 14

11814 Jordy Rd  
Midland, TX 79707  
Preview Starts: May 31st, M-F, 8-4  
MUST call in advance to schedule pick up  
Checkout: June 8th thru June 24th M-F, 8-4  
Contact: Bonnie Layport @ 661.331.5774 or Lynn Gudmundson @ 661.979.4408  
Loadout Responsibility of Buyer



18 40'L Steel Rig Mats

## Equipment listings

### Yard 1 – Oklahoma City, OK

#### Pickups

2007 GMC C5500 Dually Crew Cab Service Truck p/b Duramax 6.6L Diesel Engine • 1999 Chevrolet 2500 RC Pickup p/b Vortec 5.7L Gas Engine

#### Trucks

2014 Freightliner Cascadia 113 T/A Sleeper Truck Tractor p/b DD15 455HP Diesel Engine, 12-Spd • 2011 Peterbilt 386 T/A Day Cab Truck Tractor p/b MX13 455HP Diesel Engine, Eaton 10-Spd

#### Nitrogen Pump Trucks

2007 Kenworth T800B 3-Axle Nitrogen Pump Truck p/b Cummins IXS-565 Diesel Engine, Eaton 8-Spd, CS&P Triplex Nitrogen Pump, 12,000-Gal Nitrogen Tank • 2004 Kenworth T800B 3-Axle Nitrogen Pump Truck p/b Cummins IXS-565 Diesel Engine, Eaton 8-Spd, Cryogenics Ind Triplex Nitrogen Pump, 11,700-Gal Nitrogen Tank

#### Coiled-Tubing Units

(2) Leader Energy 3-Axle Coiled-Tubing Units, (1) w/6001 Injector, Coiled-Tubing Reel, Control Station & (1) w/Knuckle-Boom Crane, Coiled-Tubing Reel, Control Station

#### Drilling Equipment

Tesco HCl Top Drive Hydraulic Power Unit (No Engine) • G.Denver PZ-10 Triplex Mud Pump • National 10-P-130 Triplex Mud Pump • Jieneng F-1600 Triplex Mud Pump • (2) Kato 800KW Gensets p/b (2) Cat D398 Diesel Engines • National Oilwell C-300-64 Torque Converter • Parmac

481 Hydromatic Brake • Parmac V200 Hydromatic Brake • (3) Parmac V80 Hydromatic Brakes • (2) Parmac SR22 Hydromatic Brakes • (2) 2007 Jiangsu YD-160 HPUs • Flodraulic HPU • Shafter 8-Station Accumulator • Koomey 7-Station Accumulator • Koomey 5-Station Accumulator • Valvcon 5-Station Accumulator • (2) 4-Station Accumulators • 2-Station Accumulator • 2008 MI Swaco Compact Degasser • (9) NOV FC-1600 Triplex Pump Discharge Modules • NOV FB-1600 Triplex Pump Fluid End Liners • 5K Crossover Tee • Ram K6UL 10,000# Air Hoist • Bishop Lift Products Hoist • 2004 I.Rand 5000# Air Hoist • Mantiwoc Hydraulic Winch

## Houses

Teton Buildings 45'L Skid Mtd Crew House • Portable Steel Guard Shack

## Yard 2 – Midland, TX

### Service Trucks/Pickups

2017 Ford F550 XLT 4x4 EC Service Truck p/b 6.8L Gas Engine • (3) 2017 Ford F350 XL 4x4 CC Service Trucks p/b 6.2L Gas Engines • 2015 Ford F550 XLT 4x4 EC Service Truck p/b Powerstroke 6.7L Diesel Engine • 2015 Ford F350 XL 4x4 EC Flatbed Pickup p/b Powerstroke 6.7L Diesel Engine • (2) 2013 Ford F550 4x4 EC Service Trucks p/b Powerstroke 6.7L Diesel Engine • 2013 Ford F550 XLT 4x4 EC Flatbed Pickup p/b 6.8L Gas Engine • 2012 Ford F250 XLT 4x4 EC Service Truck p/b 6.2L Gas Engine • 2019 Ford F250 4x4 CC Pickup p/b Powerstroke 6.7L Diesel Engine • 2012 Chevrolet 3500HD 4x4 Flatbed Pickup p/b 6.0L Gas Engine • (2) 2015 Ford F250 XL 4x2 EC Cab & Chassis Pickups p/b 6.2L Gas Engines • 2014 Ford F250 XL 4x2 EC Cab & Chassis Pickup p/b 6.2L Gas Engine • 2019 Ford F150 XL 4x2 CC Pickup p/b 5.0L Gas Engine • (2) 2018 Ford F150 XLT 4x4 CC Pickups p/b 5.0L Gas Engines • (5) 2018 Ford F150 XLT 4x2 CC Pickups p/b 5.0L Gas Engines • 2017 Ford F150 XL 4x2 CC Pickup p/b 5.0L Gas Engine • 2017 Ford F150 XL 4x2 RC Pickup p/b 3.5L Gas Engine • (2) 2014 Ford F150 XL 4x2 RC Pickups p/b 3.7L Gas Engines • 2011 Ford F550 XL Data Control Van p/b Powerstroke 6.7L Diesel Engine

### Boom Trucks/Drill Truck

2012 Peterbilt PB348 T/A Boom Truck w/National 9103A 26-Ton Straight Boom, p/b PX-8 Diesel Engine • (4) 2010 Peterbilt 365 T/A Boom Trucks w/National 9103A 26-Ton Straight Booms, p/b Cummins 6-Cyl Diesel Engines • 2007 Sterling LT8500 T/A Boom Truck w/National 11105 Straight Boom, p/b 6-Cyl Diesel Engine • 2014 Freightliner M2 106 4x4 INOP Digger Derrick Truck w/Altec DC47TR Boom, p/b 6-Cyl Diesel Engine

### Construction

Cat TH460B 4x4 Telehandler • (2) 2012 Atlas Copco 375cfm Skid Mtd Air Compressors p/b J.Deere 4-Cyl Diesel Engines • Multiquip Whisperwatt 150KVA Portable Generator • Baldor 64KW Mobile Generator • 2014 Magnum 78KW Portable Generator • 2011 Magnum 23KW Portable Generator • (2) Mecc Alte 85KW Generators • 2018 Generac 8KW Portable Light Tower • (5) 2016 Generac 6KW Portable Light Towers • (7) 2012-2014 Magnum 6KW Portable Light Towers • ThermoDynamics Ground Heater

### Trailers

2006 Kalyn Siebert FGD-3-60T 24'L 3-Axle Lowboy Trailer • 2012 Big Tex 25'L Gooseneck Equipment Trailer • 1994 Shopbuilt 45'L T/A Equipment Trailer • 2014 Diamond T T/A Gooseneck Chemical Injection Trailer • 2002 Transcraft 48'L T/A Gel Tech Trailer • 2013 Forest River 34'L

### Auction notes

- ▶ Every item is sold 'as is, where is'
- ▶ International and online bidders – you may need to place a refundable deposit before you bid – check the auction details on our website for more information

### Foreign buyer notice

- ▶ Kruse Energy welcomes buyers from all over the world, you must be pre-approved 48 hours before auction to register to bid. For further information contact [michellewilliams@ritchiebros.com](mailto:michellewilliams@ritchiebros.com)

Gooseneck Travel Trailer • 2014 Lark United VT712TA Enclosed Trailer • 2010 Wells Cargo 16'L S/A Mobile Office Trailer • (2) 2019 Forest River 12'L S/A Mobile Shower Trailers • 1997 Big Tex 16'L Landscape Trailer • 2005 Big Tex 16'L T/A Trash Trailer • (7) Centex 16'L T/A Trash Trailers • 2002 Big Tex 16'L T/A Gooseneck End Dump Trailer • 2014 Luttrell Reel Trailer • 2011 Shopbuilt 15'L T/A Gooseneck Reel Trailer • Shopbuilt 26'L T/A Pipe Trailer

### **Recreational Vehicle**

2016 Kawasaki Mule Pro-FXT 4x4 Utility Vehicle

## **Yard 3 – Elk City, OK**

### **Construction**

1997 JCB 436B 14,000# Wheel Loader

### **Pickup**

2012 Ford F550XL CC 4x4 Flatbed Pickup p/b Powerstroke 6.7L Diesel Engine w/Welder & Air Compressor

### **Winch Truck**

1999 Kenworth T800 T/A Winch Truck Tractor p/b Cat C10 Diesel Engine, Eaton 8-Spd, Tulsa 30K Winch

Trailers/Frac Tank

1997 Aspen FG-50-3 3-Axle Folding Neck Lowboy Trailer • 2014 Lamar T/A Dual Flatbed Goose-neck Trailer • J&R 500-Bbl S/A Frac Tank

### **Production**

2014 AME 3000-PSI T/A Gooseneck Test Separator Unit Trailer • 2015 SFI 5000-PSI Test Separator Unit • 2011 Valley Vessel Fab 3000-PSI Test Separator Unit • 1984 American Tank Test Separator Unit • 1981 Natco 1440-PSI Flowback Test Unit • (2) Vertical Separators • 2012 Gooseneck T/A Flarestack Trailer w/40'H Flare • 2011 20'L Gooseneck T/A Monorail Trailer • 24'L Shopbuilt Gooseneck T/A Monorail Trailer • 2008 MC T/A Utility Trailer w/Flowback Tank • (4) 15,000# Plug Catcher Manifolds • (4) Separator Tanks • (2) Gas Busters • Vertical Storage Tank • (3) 200-PSI Test Pump Systems • (44) 2" x 10'L Fig 1502 Pup Joints • (7) 2" Fig 1502 Pup Joints • (39) 2" x 3'L Fig 1502 Pup Joints • (37) 2" Fig 1502 Elbows & Tees • (5) FMC 2" 15K Plug Valves • (7) SMI 2" 15K Plug Valves • (11) Fig 1502 Hammer Union Adapters • (5) Manual Chokes • Kimray Valve Parts • Check Valves • Iron Cart • (65) Button Chokes • (15) Beam Chokes • Beam Choke Wrenches • (2) Ridgid 700-T2 Pipe Threading Machines

## **Yard 4 – Ponca City, OK**

### **Hot Oiler Truck**

1986 Kenworth W90 T/A Hot Oiler Truck p/b Cummins NTC 350 Diesel Engine, Eaton 8-Spd, G.Denver Triplex Hot Oil Pump, Oil Heater, 60-Bbl Oil Tank

### **Trailers**

(2) 2016 Tanko 130-Bbl T/A Vacuum Transport Trailers • 2012 Southern Vac 130-Bbl T/A Vacuum Transport Trailer • 2012 Galyean 130-Bbl T/A Vacuum Tanker Trailer • 2013 Dakota T/A Belly Dump Trailer

**Yard 5 – Mineral Wells, TX****Trucks**

1994 Volvo T/A Truck Tractor p/b Cummins 410HP Diesel Engine, Eaton 10-Spd • 1982 Ford F8000 S/A Gin Pole Truck p/b Cat 3208 Diesel Engine, Tulsa Winch, 12'L Poles

**Trailers**

1993 Holden 66,000# 3-Axle Flatbed Trailer w/(2) 40'L Triangular Pipe Racks • 1982 T/A BP Spool Trailer

**Drilling Equipment**

Cat 342 6-Cyl Diesel Engine w/Twin Disc Torque Converter • Oilmaster J-275 Plunger Pump p/b 6-Cyl Diesel Engine • National J-250 Plunger Pump p/b Waukesha 6-Cyl Diesel Engine • National J-250 Plunger Pump • JACompressor Air Compressor p/b 6-Cyl Gas Engine • 1979 Brazoria Fab 275-PSI Test Separator p/b Waukesha 6-Cyl Diesel Engine • Delco AC 20KW Genset p/b Detroit 4-71 Diesel Engine • Scorpion Model 2000 Hyd Break-Out/Make-Up Tong p/b (2) 40HP Electric Motors • (2) Spinmaster Model 950 Hyd Break-Out/Make-Up Tongs Ea. p/b (2) 40HP Electric Motors • Scorpion HPU • Top Doghouse/Water Tank Combo • 30'L Round Fuel Tank • 20'L Round Fuel Tank • (3) 12'L Trailer Mtd Fuel Tanks • 12'L Round Fuel Tank • (2) 10'L Fuel Tanks • (6) Small Fuel Tanks • Fiberglass Storage Tank • (6) Plastic Poly Tanks • 25'L Pipe Tub • (14) Asst Size I-Beams • (45) Drill Collars & Drill Pipe • (955 Jts) Various Sized Structural Pipe • (400 Jts) Various Sized Sucker Rods • (8) 25'L Triangular Pipe Racks • WTM 4.5" 250-T BN DP Elevator • BJ 4.5" 150-T BN DP Elevator • (3) Side Door Elevators • (2) Web Wilson AAX Manual Tongs • (2) Foster Cathheads • (6) Gomaco Curb & Gutter Hoppers

**Yard 6 – Midland, TX****Production**

(2) 16" & (1) 12" DR7 Poly Pipe Joints • 5-1/2" Drift Pipe • Assorted FBE Line Pipe • Assorted L80 Bare Pipe • Assorted Drill Pipe Pup Joints • Flare Blower • Lg Qty of Thief Hatches

**Yard 7 – Midland, TX****Production**

(5) 2022 Pitts Horizontal Test Separator Vessels (Unused) • (5) 2022 Petrosmith Horizontal Test Separator Vessels (Unused) • (1) 2022 ICT Horizontal Test Separator Vessel (Unused)

**Yard 8 – Garden City, TX****Production**

Kase Sand Delivery System • (3) PCC Trappers • Poly Line Union Joint

**Yard 9 – Pampa, TX**

*The following equipment has been inspected & maintained by an industry leading preventative maintenance system. Engines that have been preserved for storage have PDF records of last inspection located in the online equipment listing.*

**Drawworks**

BDW 800-Mi Drawworks p/b (2) Cat D379 Diesel Engines, 2-Engine Inline Compound, Parmac 342 Brake BDW 800-Mx Drawworks p/b (2) Cat D379 Diesel Engines, 2-Engine Inline Compound, Parmac 342 Brake • BDW 800-M Drawworks p/b (2) Amerimex 800HP Traction Motors, Elmagco 6032 Brake • National 610E Drawworks p/b (1) Amerimex 1000HP Traction Motor, Eaton Airflex Brake • Brewster N-75 Drawworks p/b (2) Cat D379 Diesel Engines, 2-Engine Inline Compound, Parmac 342 Brake • Skytop/Brewster N-46 Drawworks p/b (2) Cat D379 Diesel Engines, 2-Engine

Inline Compound, Parmac V80 Brake • G.Denver G-D 700 Drawworks w/Parmac 342 Brake • (2) Cat 3508 Diesel Engines w/Belt Drives f/G.Denver G-D 700 Drawworks • D&H Rig 54" Water Brake (View Online Listings for Engine Reports)

### Generators/SCR Houses

(2) Detroit 325KW Generators p/b (2) Detroit S-60 12.7L Diesel Engines, (2) Sullivan-Palatek 30DG Compressors • (2) Detroit 325KW Generators p/b (2) Detroit S-60 12.7L Diesel Engines, (2) Sullivan-Palatek 30DG Compressors • (2) Kato 300KW Generators p/b (2) Cat D353E Diesel Engines • 2006 ETSCO Model 1400 SCR House • Ross Hill SCR House (View Online Listings for Engine Reports)

### Mud Pumps

(2) G.Denver PZ-11 Triplex Mud Pumps Ea. p/b (2) 1000HP Traction Motors • (2) C.Emsco FB-1300 Triplex Mud Pumps Ea. p/b (1) MPS 1000HP Traction Motor • Skytop/Brewster B-1300-T Triplex Mud Pump p/b Cat D398 Diesel Engine • C.Emsco F-1000 Triplex Mud Pump p/b Cat 3508 Diesel Engine • (3) HHF-1000 Triplex Mud Pumps Ea. p/b (1) Cat 3508 Diesel Engine • (2) G.Denver PZ-10 Triplex Mud Pumps Ea. p/b (1) GE752 800HP Traction Motor • National Oilwell 10-P-130 Triplex Mud Pump • C.Emsco F-1000 Triplex Mud Pump • (2) G.Denver PZ-9 Triplex Mud Pumps • Skytop/Brewster Triplex Mud Pump (View Online Listings for Engine Reports)

### Mud Equipment

49'L Mud Suction Tank w/(2) Five Star 2500 Mudslinger Cent Pumps • 53'L Mud Shaker Tank w/(2) Five Star 2500 Mudslinger Cent Pumps & Desander/Desilter • (2) 130-Bbl Trip Tanks • Trip Tank w/5000# Choke Mainfold • (12) Derrick FLO-503 Tandem Shale Shakers • (2) Tandem Fluid System Tandem Shale Shakers • (2) 4'H Mud Tanks • Charge Pump House w/(2) Five Star 3x4 Cent Pumps • (4) Charge Pump Skids Ea. w/(2) Five Star 2500 Mudslinger Cent Pumps • (7) 22"L to 35"L Steel Mud Houses • (2) Desanders • (2) Desilters

### Water Pumps

Ideal D50 Duplex Water Pump p/b Cat D311 Diesel Engine • (2) G.Denver Duplex Water Pumps p/b Waukesha 6-Cyl Diesel Engines • Bethlehem U46 Duplex Water Pump p/b Waukesha 6-Cyl Diesel Engine • G.Denver Duplex Water Pump p/b Ford 6-Cyl Diesel Engine • (2) G.Denver Duplex Water Pumps p/b Waukesha 4-Cyl Diesel Engines • Oilwell Duplex Water Pump p/b Waukesha 4-Cyl Diesel Engine • G.Denver PXD-172 Duplex Water Pump • Worthington Duplex Water Pump

### Water Tanks/Fuel Tanks

(1) 37'L Round Water Tank w/Cent Pumps • (2) 32'L Round Water Tanks • 29'L Round Water Tank w/Cent Pumps • 32'L Round Fuel Tank • Fuel Tank/Lubester Combo

### Houses/Containers

(5) 49'L Ameritech Crew Houses • (2) 32'L & 45'L Tool Pusher Houses • (8) 23'L to 32'L Steel Top Doghouse/Drillers Cabins • (8) 10'L to 30'L Steel Parts Houses • 33'L Steel Change House • (2) 20'L Shipping Containers

### Drilling Components

Hydril GK-10-900 Ann BOP • Koomey 6-Station Accumulator/Tool Basket Combo • (2) Koomey 5-Station Accumulator/Tool Basket Combos • (3) 6-Station Accumulators • Shaffer 5-Station Accumulator • (3) 5-Station Accumulators • (1) 10K Choke Manifold • (6) 5K Choke Manifolds • 4-Comp Lubester/Tool Basket Combo • (7) 4-Comp Lubesters • (3) Atmospheric Degassers • Stand Pipe Skid • 8'H Steel Platform w/Tool Basket • (3) Sullivan-Palatek 30DG Air Compressors • (2) Trailer Mtd Air Compressors • (2) Air Compressors • G.Denver 275 Rotary Table • Sipetro ZP275 Rotary Table • (3) Ideco 27.5" Rotary Tables • (2) 27.5" Rotary Tables • Ideco 23-E Rotary Table • (2) G.Denver 22.5" Rotary Tables • Ideco 205B Rotary Table • 20.5" Rotary Table • Skytop/Brewster Rotary Table • (2) National 350T Traveling Blocks • Wilson 350T Traveling Block • Skytop/Brewster 300T Traveling Block • 2005 American 265T Traveling Block/Hook Combo • (2) YC-225 Traveling Blocks • (2) Oilwell 5-Sheave Traveling Blocks • C.Emsco Traveling Block • BJ 150T Block/Hook

Combo • (2) DG315 Hooks • (4) Sheave Becketts • (2) G.Denver 300-T Swivels • National 300-T Swivel • G.Denver 200T Swivel • National 150-T Swivel • (2) OWI 35C7 Hyd Pipe Spinners • (3) Gray Spin Hyd Pipe Spinners • (5) I.Rand H5UL Air Hoists • (4) TFI 10,000# Air Hoists • (3) I.Rand 10,000# Air Hoists • (6) I.Rand 5000# Air Hoists • (3) Five Star Wireline Measuring Devices • (7) Drill Line Spools • (2) 30'L & 35'L Pipe Tubs • (35) Assorted Rig Mats

### Handling Tools/Drilling Surplus

(2) 5" x 350-T BN DP Elevator • (8) 4.5" x 350-T BN DP Elevators • (15) 4.5" x 250-T BN DP Elevators • (4) 4" x 250-T BN DP Elevators • (20) Drill Pipe Slips • (10) Drill Collar Slips • Manual Tongs/Manual Tong Parts • (25) Crossover Subs • (40) Lift Subs • BOP Parts • Drilling Spools • DSA's • Five Star 2x3 Cent Pump • (3) Cent Pumps • (6) 480V Camp Transformers • 120/208V Camp Transformer • (13) 5HP to 100HP 3-Ph Electric Motors • (3) Kelly Hoses • (13) Gate Valves • (2) Pulsation Dampners • F-1000 & F-800 Mud Pump Parts • (28) Drawworks Brake Bands • Drawworks Spare Parts • (2) 20.5" Split Master Bushings • (2) Deadline Anchors • (3) Lime Containers • (7) Forklift Man Baskets • (6) 4'L Junk Baskets • (72) Fire Extinguishers

### Drill Pipe/HWDP/Drill Collars

21,018' (678 Jts) 5" G-105 19.50# Rng 2 BN Drill Pipe (DWB) w/4-1/2" IF Conns • 5,580' (180 Jts) 5" S-135 20.00# Rng 2 BN Drill Pipe (DWB) w/4-1/2" XH Conns • (35 Jts) 4" Heavy Weight Drill Pipe w/4" FH Conns • (32 Jts) 7-3/8" to 8" OD Rng 2 Slick Drill Collars w/NC-56 & 6-5/8" H-90 Conns • (5 Jts) 7-3/8" to 7-3/4" OD Rng 2 Spiral Drill Collars w/6-5/8" H-90 Conns • (13 Jts) 6-1/4" to 6-5/8" OD Rng 2 Slick Drill Collars w/5H-90 Conns • (1 Jt) 6-5/8" OD Rng 2 Bottom Hole Slick Drill Collar w/5H-90 Conn • (75 Jts) 5-7/8" to 6-7/16" Rng 2 Slick Drill Collars w/4-1/2" XH & 4H-90 Conns • (1 Jt) 6-1/8" OD Rng 2 Spiral Drill Collar w/4H-90 Conn • (1 Jt) 6-1/4" OD Rng 2 Bottom Hole Slick Drill Collar w/4-1/2" XH Conn • (11 Jts) 4-5/16" to 4-7/8" OD Rng 2 Slick Drill Collars w/3-1/2" IF Conns • (28 Jts) 4-1/2" OD Rng 2 Slick Drill Collars w/3-1/2" XH Conns • (2 Jts) 4-3/4" OD Rng 2 Bottom Hole Slick Drill Collars w/3-1/2" XH Conns • (2) 5-1/4" Hex Kellys • (1) 4-1/4" Square Kelly (View Online Listings for Pipe Inspections)

### Shop/Truck Parts

(2) Lincoln Arc Welders • (4) Shop Compressors • (3) Drill Presses • Metal Bandsaw • Airflex Clutch • Oil Filters • (3) Radiators • Industrial Belts • Mobile Heater • Brake Bands • Hyd Cylinders • Pneumatic Control Levers • Brush Guard • Tool Boxes • Parts Bins • Shop Shelving • Bolts • Nuts • Washers • Bearings • Seals

## Yard 10 – Levelland, TX

### Wireline Trucks

2012 Kenworth T800 T/A Split Drum S/D Wireline Truck p/b Cummins ISX12 Diesel Engine, Eaton 10-Spd, Alum Recording Cab • (4) 2008 Kenworth T370 T/A Split Drum S/D Wireline Trucks p/b Cummins PX8 Diesel Engines, Eaton 10-Spds, JW Custom Alum Recording Cabs • 2008 Kenworth T370 T/A Split Drum S/D Wireline Truck p/b Cummins PX8 Diesel Engine, Eaton 10-Spd, FTS Intl Alum Recording Cab • 2006 Kenworth T300 T/A Split Drum S/D Wireline Truck p/b Cat C7 Diesel Engine, Eaton 10-Spd, 2006 Custom Excell Bodies Alum Recording Cab

### Lubricator Trailers

2015 Big Tex T/A Gooseneck Lubricator Trailer w/2012 FHE Lubricator Head p/b Perkins 4-Cyl Diesel Engine • (2) 2014 Big Tex T/A Gooseneck Lubricator Trailers w/2015 FHE Grease Injectors p/b Perkins 4-Cyl Diesel Engines • (3) 2013 Big Tex T/A Gooseneck Lubricator Trailers w/2014 FHE Lubricators p/b Perkins 4-Cyl Diesel Engines • 2014 Big Tex T/A Gooseneck Lubricator Trailer w/2008 Forum 10K Double Wireline BOP • 2013 Big Tex T/A Gooseneck Lubricator Trailer w/FHE 10K Triple Wireline BOP • 2009 Trailmaster T/A Gooseneck Lubricator Trailer w/Sauer Danfoss Hyd p/b Kubota 3-Cyl Diesel Engine

**Trailers**

(6) 2013 Big Tex 14GN-30 T/A Gooseneck Lubricator Iron Trailers • (3) 2009 PJ 27'L T/A Gooseneck Lubricator Iron Trailers • (2) 2008 PJ 27'L T/A Gooseneck Lubricator Iron Trailers • PJ 27'L T/A Gooseneck Lubricator Iron Trailer • 2008 Fabrique 30'L Dual-T/A Gooseneck Gooseneck Lubricator Iron Trailer • 2005 Temco 30'L T/A Gooseneck Lubricator Iron Trailer • 2004 Temco 30'L T/A Gooseneck Lubricator Iron Trailer • 28'L T/A Gooseneck Lubricator Iron Trailer • JW-Slickline 14'L T/A BP Lubricator Iron Trailer

**Wireline Tools/Downhole Tools**

(2) FHE 7-1/16" 10K Single Wireline BOPs • FHE 7-1/16" 5K Single Wireline BOP • Double E 7-1/16" 5K Single BOP • (4) 7-1/16" 5K Single Wireline BOPs • FHE 4-1/16" 5K Single Wireline BOP • (8) 7-1/16" 10K Grease Heads • (4) 7-1/16" 5K Grease Heads • 4-1/16" 10K Grease Head • (115 Ft) 7-1/16" 10K Stainless Steel Lubricator Iron • (310 Ft) 5K & 10K Stainless Steel Lubricator Iron • (8) 7-1/16" 15K Wireline Flanges • (20) 7-1/16" 10K Wireline Flanges • (4) 4-1/16" 10K Wireline Flanges • (11) 10K Wireline Flanges • (3) Wireline Tech 32" Dia x 40,000# Wireline Sheaves • Lg Qty of Wireline Sheaves • (80) 3-1/8" Weight Bars • Lg Qty of 1-3/8" to 2" Weight Bars • Qty of 1-11/16" Weight Bars • (29) Weight Bars • (4) 2-3/4" x 2'L Gamma Ray Tools • (33) 2-3/4" x 3'L & 5'L Cement Bond Tools • Lg Qty of Perforated Wireline Tools • Bigfoot Perforating Machine Parts • (40) Diamond Back Chemical Cutter Anchor Bottom Tools • (37) Chemical Cutter Anchor Bottom Tools • (30) 1-11/16" Chemical Cutter Bottom Tools • (153) Chemical Cutter Tandem Subs • (26) Chemical Cutter Bodies • (62) Chemical Cutter Bull Plugs • (52) Severing Heads • (5) Wireline Pump End Tees • (20) Sets of Complete Free Point Tools • (12) Free Point Tool Panels w/Boxes • (9) Free Point Speakers & Roll of Speaker Wire • 3/4" Cable Slings • (4) Junk Baskets • (2) BOP Hand Carts & Tool Rack • (19) Wireline Truck Drive Shafts • Shop Equipment • Rig Lights

**Yard 11 – Riverton, WY****Mud Pumps**

(2) C.Emsco F-1000 Triplex Mud Pumps Ea. p/b Cat D398 Diesel Engine, Mtd. in Covered Skids

**Yard 12 – Hayward, CA****Fuel Tank**

SuperVault MHC-D3-2,000 Fuel Tank (Designed to withstand natural disasters)

**Yard 13 – Elk City, OK****Test Separator**

1997 National Tank 1440-PSI Separator Tank

**Yard 14 – Midland, TX****Rig Mats**

(18) 40'L x 8'W Steel Rig Mats

**Important Information**

- ▶ Due to COVID concerns you **MUST** call ahead to schedule pick up.



**2 – Kenworth T370 Wireline Trucks – Yd 10**



**2 – F-1000 Triplex Mud Pumps – Yd 9**



**1994 Leader Energy Coiled-Tubing Unit – Yd 1**



**1997 JCB 436B Wheel Loader – Yd 3**



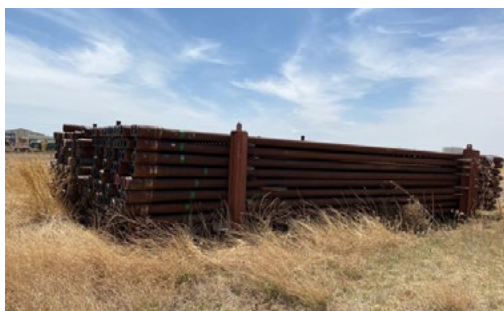
**2010 Peterbilt 365 Boom Truck – Yd 2**



**2017 Ford F350 – Yd 2**



**Brewster N-75 Diesel Powered Drawworks – Yd 9**



**21,018 Ft 5 In. G-105 Drill Pipe – Yd 9**

**RITCHIE BROS.**  
**KRUSE ENERGY<sup>SM</sup>**

@KruseEnergy



**Follow us online!**