



SUSQUEHANNA TRUCK SERVICE, INC.

848 LANCASTER PIKE
QUARRYVILLE, PA 17566
Tel. : (717) 284-3760

SERVICE INVOICE NUMBER

SR3510

INVOICE DATE

06-23-25

Customer: MASON DIXON CONTRACTORS LLC
4566 PO BOX 220
WILLOW STREET, PA 17584

Ship To:

MASON DIXON CONTRACTORS LLC
WILLOW STREET, PA 17584

717 517-8841

Tax ID Date: Tax ID:

YEAR	MAKE / MODEL	VIN	LICENSE	MILEAGE	AUTH
2007	PETERBILT / 379	1XP5DBEXX7D732522	AG57650	821211M	
DEL DATE	OPEN DATE / TIME	ENGINE MODEL / SERIAL #	P.O. NUMBER	COMPLETE	UNIT/STOCK
	02-11-25 / 11:05AM	/ SDP14943		04-28-25	7-19
DEL MILEAGE	MEMO		TRANSMISSION MODEL/SERIAL #		SERVICE WRITER
			/		GNG*GNG
ENGINE HOURS	0.0	REEFER HOURS	0.0	STBY HOURS	0.0

WITH NEW NUT. HUNG DRIVESHAFT WITH NEW STRAP KITS AND FRAME BOLTS FOR
CARRIER BEARING. TORQUED ALL STRAP BOLTS.

TOTAL LABOR \$315.00

TOTAL PARTS \$165.16

TOTAL FOR OPERATION 6 \$480.16

1	6.5-70-18X	STRAP KIT U JOINT	\$17.00
1	20-74-91	NUT	\$16.20
1	6.5-70-18X	STRAP KIT U JOINT	\$17.00
1	10094142	CARRIER BEARING	\$114.96

MISC. SHOP SUPPLIES \$806.74

	LABOR	\$23,049.50
	SUBLET SALES	\$2,642.91
	PARTS	\$24,829.51
	SHOP SUPPLIES	\$806.74
	SALES TAX	\$3,009.12
4566	CHARGE	\$54,337.78

A 3% SURCHARGE WILL BE APPLIED IF PAYING BY CREDIT CARD.

Terms: Net payable upon receipt. Our finance charge is computed by a single periodic rate of 1 1/2% per month, or 18% annual percentage rate. Parts ordered on emergency basis are not returnable. Items received in satisfactory condition.

CUSTOMER: X _____ DATE _____



SUSQUEHANNA TRUCK SERVICE, INC.

848 LANCASTER PIKE
QUARRYVILLE, PA 17566
Tel. : (717) 284-3760

SERVICE INVOICE NUMBER

SR3510

INVOICE DATE

06-23-25

Customer: MASON DIXON CONTRACTORS LLC
4566 PO BOX 220
WILLOW STREET, PA 17584

Ship To:

MASON DIXON CONTRACTORS LLC
WILLOW STREET, PA 17584

717 517-8841

Tax ID Date: **Tax ID:**

YEAR	MAKE / MODEL	VIN	LICENSE	MILEAGE	AUTH
2007	PETERBILT / 379	1XP5DBEXX7D732522	AG57650	821211M	
DEL DATE	OPEN DATE / TIME	ENGINE MODEL / SERIAL #	P.O. NUMBER	COMPLETE	UNIT/STOCK
	02-11-25 / 11:05AM	/ SDP14943		04-28-25	7-19
DEL MILEAGE	MEMO		TRANSMISSION MODEL/SERIAL #		SERVICE WRITER
			/		GNG*GNG
ENGINE HOURS	0.0	REEFER HOURS	0.0	STBY HOURS	0.0

1 ROAD SERVICE TO CUSTOMER LOCATION.

TOTAL FOR OPERATION 1

\$0.00

- 2 CUSTOMER REMOVED AND REPLACED SDP ENGINE WITH ANOTHER SDP ENGINE BUT HAS SEVERAL HARNESS CONNECTORS THAT DONT APPEAR TO BE CORRECT. INSPECT AND ADVISE.**
LOOKED OVER ENGINE SWAP AND DETERMINED NEEDED DIRECTION FOR PROJECT. TOOK ECM BACK TO SHOP TO CHECK CALIBRATION IN DONOR ENGINE. CLEANED UP TRUCK. ADVISED OF ALL SEEN ISSUES WITH DONOR MOTOR, SETUP, ETC AND WHAT WOULD BE NEEDED TO MAKE RUNNING/RIGHT.

- OIL PAN CRACKED
- SDP TWIN TURBOS/EXHAUST PLUMBING ISSUES (OLD ENGINE WAS SINGLE TURBO)
- INCORRECT ROCKER BASE - SINGLE ENGINE HARNESS PLUG/WIRE-MATING ISSUES (WHATS UNDER VALVE COVERS IS A MYSTERY)
- INCORRECT ECM/WIRING HARNESS
- WATER INLET PIPING TO WATER PUMP INCORRECT/PLUMBING ISSUES
- MULTIPLE ENGINE ACCESSORIES/SENSORS/MOUNTING ADAPTATION ISSUES

TOTAL LABOR \$314.50

TOTAL FOR OPERATION 2

\$314.50

- 3 TOW TRUCK FROM CUSTOMER LOCATION TO STS.**
TOWED TRUCK TO SHOP.

TOTAL LABOR \$370.00

TOTAL FOR OPERATION 3

\$370.00

- 4 FINISH ENGINE SWAP. CHECK CAM GEAR AND INJECTORS FOR ECM COMPATABILITY. SWAP WATER INLET FROM OLD ENGINE TO FIT IN CHASSIS. INSTALL MANIFOLD FROM OLD ENGINE AND STS REBUILT TURBO.**
CHECKED OUT ENGINE - REMOVED BELLY BAR FROM TRUCK. CLEANED QUICK DRAIN FITTING AND DRAINED OIL. DROPPED PAN FROM ENGINE AND INSPECTED - CHUNKS OF METAL, ALUMINUM, RUBBER O RINGS, AND PLASTIC FOUND AT BOTTOM OF PAN. POSSIBLY FROM INJECTORS AND JAKE BRAKES. FOUND OIL WAS SLUDGE.

A 3% SURCHARGE WILL BE APPLIED IF PAYING BY CREDIT CARD.

Terms: Net payable upon receipt. Our finance charge is computed by a single periodic rate of 1 1/2% per month, or 18% annual percentage rate. Parts ordered on emergency basis are not returnable. Items received in satisfactory condition.

CUSTOMER: X

DATE



SUSQUEHANNA TRUCK SERVICE, INC.

848 LANCASTER PIKE
QUARRYVILLE, PA 17566
Tel. : (717) 284-3760

SERVICE INVOICE NUMBER

SR3510

INVOICE DATE

06-23-25

Customer: MASON DIXON CONTRACTORS LLC
4566 PO BOX 220
WILLOW STREET, PA 17584

Ship To:

MASON DIXON CONTRACTORS LLC
WILLOW STREET, PA 17584

717 517-8841

Tax ID Date: Tax ID:

YEAR	MAKE / MODEL	VIN	LICENSE	MILEAGE	AUTH
2007	PETERBILT / 379	1XP5DBEXX7D732522	AG57650	821211M	
DEL DATE	OPEN DATE / TIME	ENGINE MODEL / SERIAL #	P.O. NUMBER	COMPLETE	UNIT/STOCK
	02-11-25 / 11:05AM	/ SDP14943		04-28-25	7-19
DEL MILEAGE	MEMO		TRANSMISSION MODEL/SERIAL #		SERVICE WRITER
			/		GNG*GNG
ENGINE HOURS	0.0	REEFER HOURS	0.0	STBY HOURS	0.0

CLEANED OIL PAN AND BOLTS. REMOVED L/S CAC PIPING AND INSPECTED ENGINE INLET FOUND EXTREMELY RUSTY AND DIRT LAYING IN INTAKE. ALSO FOUND OIL STILL IN CAC AND PIPING FROM TURBO FAILURE. BARRED ENGINE OVER BY HAND AND VERIFIED MOTOR DOES SPIN. REMOVED PRECOOLER, INTERSTAGE PIPING, ALL TURBO ELBOWS, BRACKETS, MOUNTING PLATES AND OIL LINES. INSPECTED TURBOS - NEITHER TURBO SPINS AT ALL. REMOVED HP AND LP TURBOS AND MOUNTING BRACKETS. REMOVED EXHAUST OUTLET PIPING AND BRACKETS. REMOVED EXHAUST MANIFOLD AND TURBO OIL SUPPLY LINES. MADE UP JUMPER TUBE FOR OIL SUPPLY FITTINGS SO ENGINE COULD BE STARTED AND CHECKED FOR OPERATION. REMOVED ENGINE HARNESS AND ECM. REMOVED BOTH CAMSHAFT SENSORS AND INSPECTED CAM GEAR - FOUND E-MODEL CAM GEAR. REINSTALLED SENSORS. REMOVED VALVE COVERS. NOTED NO CRANKCASE BREATHER PIPING OR VENTING ON ENGINE. INSPECTED VALVE TRAIN. FOUND E-MODEL JAKE HOUSINGS, 3 CAT INJECTORS, 3 AFTERMARKET INJECTORS, BROKEN INJECTOR HARNESS AND 1 BROKEN STUD OFF INJECTOR SOLENOID. ALSO NOTED SUBSTANTIAL AMOUNT OF DIRT/DEBRIS IN TOP OF ENGINE. FLUSHED CYLINDER HEAD AND ALL VALVE TRAIN COMPONENTS. USED BENCH HARNESS AND CONNECTED TO ECM - OK. INSTALLED GOOD USED ECM AND TESTED ENGINE HARNESS. CLEANED STARTER CABLES THAT WEREN'T INSTALLED ON STARTER AND ROUTED INSTALLED. INSTALLED BATTERY CHARGER ON TRUCK. REMOVED AND REPLACED OIL FILTER. TRIED TO START - BATTERY POTENTIAL VERY LOW, WONT HOLD CHARGE. USED 2 JUMP PACKS ON STARTER AND BATTERIES - ENGINE CRANKS EXTREMELY HARD, LOSS OF COMPRESSION IN 1 CYLINDER AND WILL NOT START. MONITORED ECM AND VERIFIED ECM SEEING ENGINE SPEED AND OIL PRESSURE. ENGINE NEEDS DISASSEMBLED FOR FURTHER DIAG.

DRAINED OIL IN CLEAN BUCKETS. REMOVED OIL PAN, PICK UP TUBE AND BLOCK STIFFENER PLATE. RAN A MAGNET THROUGH OIL PAN AND FOUND METAL PIECES. LOOKED OVER PIECES AND FOUND THE MATCH GEAR RETAINER PLATE FROM FRONT OF ENGINE. UNABLE TO SEE ALL GEAR RETAINER PLATES WITH OUT REMOVING FRONT STRUCTURE. REMOVED #2, #4 AND #6 MAIN CAPS. (CRANK LOOKS GOOD). REMOVED REST OF MAIN CAPS AND ROD CAPS AND INSPECTED CRANK, CRANK LOOKED GOOD. NOTICED #7 MAIN CAP DIDNT WANT TO STAY SEATED IN BLOCK AFTER TAPPING IN WITH RUBBER Mallet. STARTED REMOVING HEAD. REMOVED FUEL FILTER HOUSING. LEANED HOOD FRONT, UNBOLTED RAD SUPPORT TO PULL RAD FRONT. REMOVED BELTS AND ACCESSORY BRACKETS, FAN AND FAN HUB TO ACCESS PEANUT COVER BOLTS. REMOVED A/C LINES, FAN HUB AIR SUPPLY AND HARNESS. REMOVED GROUNDS FROM HEAD AND FUEL RETURN LINE. REMOVED UPPER AND LOWER VALVE COVERS. REMOVED ENGINE BRAKE HOUSING, ROCKER SHAFTS, PEANUT COVER, CAM GEAR AND HEAD BOLTS. PULLED HEAD. #4 CYLINDER HAD A

A 3% SURCHARGE WILL BE APPLIED IF PAYING BY CREDIT CARD.

Terms: Net payable upon receipt. Our finance charge is computed by a single periodic rate of 1 1/2% per month, or 18% annual percentage rate. Parts ordered on emergency basis are not returnable. Items received in satisfactory condition.

CUSTOMER: X

DATE



SUSQUEHANNA TRUCK SERVICE, INC.

848 LANCASTER PIKE
QUARRYVILLE, PA 17566
Tel. : (717) 284-3760

SERVICE INVOICE NUMBER

SR3510

INVOICE DATE

06-23-25

Customer: MASON DIXON CONTRACTORS LLC
4566 PO BOX 220
WILLOW STREET, PA 17584

Ship To:

MASON DIXON CONTRACTORS LLC
WILLOW STREET, PA 17584

717 517-8841

Tax ID Date: Tax ID:

YEAR	MAKE / MODEL	VIN	LICENSE	MILEAGE	AUTH
2007	PETERBILT / 379	1XP5DBEXX7D732522	AG57650	821211M	
DEL DATE	OPEN DATE / TIME	ENGINE MODEL / SERIAL #	P.O. NUMBER	COMPLETE	UNIT/STOCK
	02-11-25 / 11:05AM	/ SDP14943		04-28-25	7-19
DEL MILEAGE	MEMO			TRANSMISSION MODEL/SERIAL #	SERVICE WRITER
				/	GNG*GNG
ENGINE HOURS	0.0	REEFER HOURS	0.0	STBY HOURS	0.0

LOT OF RUST BUILD UP LIKE IT GOT WATER OR MOISTURE IN IT AND THE ENGINE SAT FOR A WHILE. WIRE WHEELED CARBON/RUST BUILD UP AT TOP OF LINER. REMOVED ALL PISTONS AND INSPECTED. REMOVED LINERS. CLEANED DECK, WIRE WHEELED AND SANDED. CLEANED BLOCK AND INSPECTED WATER HOLES. RECOMMEND INSERTING ALL WATER HOLES. WIRE WHEELED AND CLEAN UPPER AND LOWER LINER BORES. REMOVED RADIATOR. REMOVED FRONT COVER, WATER PUMP AND OIL COOLER INLET. REMOVED POWER STEERING PUMP AND BRACKET TO FRONT COVER, AIR COMPRESSOR, DAMPER AND ALL BOLTS HOLDING FRONT COVER ON. FRONT COVER WAS SEIZED TIGHT ON THE DOWEL PINS AND TOOK A WHILE TO GET BROKE LOOSE. INSPECTED FOR BROKEN GEAR RETAINER PLATE. NO BROKEN OR DAMAGED PLATE LOCATED. SUSPECT PIECES ARE FROM PREVIOUS FAILURE. REMOVED GEARS AND STUB SHAFTS. REMOVED FRONT STRUCTURE BACK PLATE. CLEANED FRONT OF BLOCK AND BLEW OUT ALL OIL GALLEY HOLES. CLEANED CRANK FROM RUST AND SEAL SURFACE. REMOVED OIL FILTER HOUSING AND OIL COOLER. CLEANED PASSENGER SIDE OF BLOCK, TO PREP FOR PAINT. CLEANED FRONT STRUCTURE, VALVE COVERS, RISER, MOTOR MOUNT AND FRONT COVER. DEGREASED AND POWER WASHED. REPLACED FRONT STRUCTURE THROUGH STUDS AND SEALS. WIRE WHEELED AND CLEANED GASKET OFF FRONT COVER. CLEANED AND WIRE WHEELED DRIVER SIDE OF BLOCK. CLEANED AND TAPPED HEAD BOLT HOLES. STRIPPED HEAD TO SEND TO MACHINE SHOP. REBUSHED BULL GEAR, IDLER GEAR AND ADJUSTABLE IDLER CAM GEAR. REMOVED PARTS OFF OLD ENGINE NEEDED FOR ENGINE OVERHAUL. MACHINED COUNTER BORES. MACHINED AND INSERTED ALL WATER HOLES IN DECK. REMOVED CAB MOUNT BOLTS AND RAISED CAB FOR ACCESS TO FOUR REAR MOST WATER HOLES IN DECK. SET CAB BACK DOWN AFTER INSERTING AND REINSTALLED BOLTS. INSTALLED FRONT STRUCTURE PLATE AND BULL GEAR STUB SHAFT. PINNED ENGINE AND INSTALLED FRONT GEAR TRAIN STUB SHAFTS AND GEARS. CLEANED OIL PAN AND PAINTED. INSTALLED FRONT STRUCTURE COVER, WATER PUMP, FUEL PUMP, POWER STEERING ADAPTER AND OIL FILL TUBE. REMOVED OIL COOLER AND OIL FILTER HOUSING ON 6NZ IN PARKING LOT TO USE ON ENGINE TO MATCH OTHER COMPONENTS. OIL COOLER HOUSINGS OFF OF ENGINE IN TRUCK AND PARTS ENGINES BOTH HAD VERY ERRODED SEALING SURFACES.

POLISHED ROD AND MAIN JOURNALS INSTALLED MAIN BEARINGS AND MAIN CAPS. BENZOENED #1 LOWER LINER BORE AREA DUE TO PITTING. INSTALLED LINERS, PISTONS AND CONNECTING RODS. CLEANED WIRE WHEELED FITTINGS/PLUGS FOR HEAD. INSTALLED REAR CAM CAP WITH NEW O RING. INSTALLED REAR LIFTING BRACKET AND RETURN FUEL LINE. INSTALLED CYLINDER HEAD WITH NEW SPACER PLATE AND HEADGASKET. INSTALLED NEW SPRINGS AND PLUNGERS IN OIL FILTER HOUSINGS. INSTALLED OIL FILTER HOUSING, OIL COLER AND BONNETS. NOTICED

A 3% SURCHARGE WILL BE APPLIED IF PAYING BY CREDIT CARD.

Terms: Net payable upon receipt. Our finance charge is computed by a single periodic rate of 1 1/2% per month, or 18% annual percentage rate. Parts ordered on emergency basis are not returnable. Items received in satisfactory condition.

CUSTOMER: X _____ DATE _____



SUSQUEHANNA TRUCK SERVICE, INC.

848 LANCASTER PIKE
QUARRYVILLE, PA 17566
Tel. : (717) 284-3760

SERVICE INVOICE NUMBER

SR3510

INVOICE DATE

06-23-25

Customer: MASON DIXON CONTRACTORS LLC
4566 PO BOX 220
WILLOW STREET, PA 17584

Ship To:

MASON DIXON CONTRACTORS LLC
WILLOW STREET, PA 17584

717 517-8841

Tax ID Date: Tax ID:

YEAR	MAKE / MODEL	VIN	LICENSE	MILEAGE	AUTH
2007	PETERBILT / 379	1XP5DBEXX7D732522	AG57650	821211M	
DEL DATE	OPEN DATE / TIME	ENGINE MODEL / SERIAL #	P.O. NUMBER	COMPLETE	UNIT/STOCK
	02-11-25 / 11:05AM	/ SDP14943		04-28-25	7-19
DEL MILEAGE	MEMO		TRANSMISSION MODEL/SERIAL #		SERVICE WRITER
			/		GNG*GNG
ENGINE HOURS	0.0	REEFER HOURS	0.0	STBY HOURS	0.0

ABS CABLE AND AIR LINE TO PASSENGER SIDE BRAKES WERE SMASHED (MOST LIKELY FROM ENGINE INSTALL). REPLACED BRAKE AIR LINE AND ABS HARNESS TO PASSENGER SIDE STEER. INSTALLED CAMSHAFT, THRUST ADAPTER AND PLATE.

INSTALLED CAM GEAR AND INJECTORS. REMOVED AND REPLACED INJECTOR SOLENOID ON DAMAGED INJECTOR WITH GOOD USED SOLENOID. SET TIMING AND CAM GEAR BACK LASH. INSTALLED ROCKER ASSEMBLIES AND ENGINE BRAKES. ADJUSTED VALVES, INJECTORS AND ENGINE BRAKES. INSTALLED FUEL AND COOLANT CROSS OVER HARD LINES. RAN/REROUTED COOLANT LINES TO OIL COOLER HAD TO RE ROUTE DUE TO CONVERTING THE OIL COOLER TO THE OLDER STYLER COOLER AND BONNETS. REPINNED INJECTOR HARNESS TO MATCH ENGINE BRAKE SOLENOIDS. INSTALLED PEANUT COVER, VALVE COVER BASE AND VALVE COVERS WITH BREATHER PROVISION PRESENT. INSTALLED GOOD USED ENGINE HARNESS TO MATCH ECM. INSTALLED ROAD DRAFT TUBE. TRANSFERRED FAN HUB STUDS FROM OLD ENGINE TO NEWER ENGINE. INSTALLED FAN HUB AND DAMPER. FOUND ENGINE ACCESSORY BRACKET WORN AND DAMAGED. INSTALLED A/C COMPRESSOR, ALTERNATOR, TENSIONERS AND PULLEYS AND BELTS. INSTALLED EXHAUST MANIFOLD HARDWARE, MANIFOLD AND TURBO. REPAIRED COOLANT MANIFOLD IN FRAME RAIL THAT HAD A BROKEN CLAMP. ROUTED EXHAUST PIPING, ADDED SPACERS UNDER 5" U BOLT STYLE CLAMP TO GET ELBOW AWAY FROM LEAF SPRING. REMOVED AND REPLACED CHARGE AIR COOLER (OLD COOLER HAD EXCESSIVE AMOUNT OF OIL AND DEBRIS FROM PREVIOUS TURBO FAILURE) INSTALLED RADIATOR, CAC AND INTAKE PIPING. FILLED WITH OIL AND COOLANT. REPLACED AIR, OIL AND FUEL FILTERS. STARTED AND RAN ENGINE, OK. CHECKED FOR LEAKS, OK. ATTEMPTED TO MOVE TRUCK AND FOUND CLUTCH WILL NOT DISENGAGE EVEN WITH PEDAL TO FLOOR. DROVE TRUCK BACK AND FORTH WITH CLUTCH DEPRESSED FULLY ATTEMPTING TO BREAK CLUTCH FREE WITH NO SUCCESS. AIR HAMMERED PRESSURE PLATE WITH CLUTCH PEDAL DEPRESSED AND GOT CLUTCH DISC TO BREAK FREE OF FLYWHEEL. CHECKED CLUTCH OPERATION WHILE DRIVING, CLUTCH SEEMS OK.

PLACED ON DYNO, STRAPPED DOWN AND CONNECTED ALL LEADS. CHECKED FUEL PRESSURE - FOUND 300 PSI AT IDLE. REMOVED FUEL RETURN CHECK VALVE -FOUND FULL OF OLD INJECTOR O-RING PIECES. FLUSHED OUT FUEL RETURN LINE/MANIFOLD. REMOVED AND REPLACED FUEL RETURN CHECK VALVE. CHECKED FUEL PRESSURE - 200 PSI AT IDLE. REMOVED SPRING KIT FROM FUEL TRANSFER PUMP - FOUND EXTRA HEAVY, NOT OEM SPRING INSTALLED INSIDE TRANSFER PUMP. INSTALLED CATERPILLAR HP SPRING KIT. CHECKED FUEL PRESSURE 95 PSI AT IDLE. CLEARED ALL CODES. WARMED UP ENGINE AND BROKE IN. ADJUSTED ECM FOR SAFE POWER LEVEL. MADE POWER RUNS. UPON RETURNING TO IDLE, CEL CAME ON. FOUND ACTIVE CODE FOR CAM/CRANK POSITIONS. REMOVED

A 3% SURCHARGE WILL BE APPLIED IF PAYING BY CREDIT CARD.

Terms: Net payable upon receipt. Our finance charge is computed by a single periodic rate of 1 1/2% per month, or 18% annual percentage rate. Parts ordered on emergency basis are not returnable. Items received in satisfactory condition.

CUSTOMER: X

DATE



SUSQUEHANNA TRUCK SERVICE, INC.

848 LANCASTER PIKE
QUARRYVILLE, PA 17566
Tel. : (717) 284-3760

SERVICE INVOICE NUMBER

SR3510

INVOICE DATE

06-23-25

Customer: MASON DIXON CONTRACTORS LLC
4566 PO BOX 220
WILLOW STREET, PA 17584

Ship To:

MASON DIXON CONTRACTORS LLC
WILLOW STREET, PA 17584

717 517-8841

Tax ID Date: Tax ID:

YEAR	MAKE / MODEL	VIN	LICENSE	MILEAGE	AUTH
2007	PETERBILT / 379	1XP5DBEXX7D732522	AG57650	821211M	
DEL DATE	OPEN DATE / TIME	ENGINE MODEL / SERIAL #	P.O. NUMBER	COMPLETE	UNIT/STOCK
	02-11-25 / 11:05AM	/ SDP14943		04-28-25	7-19
DEL MILEAGE	MEMO		TRANSMISSION MODEL/SERIAL #		SERVICE WRITER
			/		GNG*GNG
ENGINE HOURS	0.0	REEFER HOURS	0.0	STBY HOURS	0.0

CAM SENSOR - INCORRECT PART NUMBER. REMOVED AND REPLACED CAM SENSOR WITH CORRECT ONE, WARMED UP ENGINE AND MADE POWER RUNS TIMING LIGHT CAME BACK ON. LOOSENED FAN HUB. REMOVED PEANUT COVER AND PINNED ENGINE. MEASURED CAM GEAR BACKLASH - .015". TIMING MARK STRAIGHT UP. REINSTALLED PEANUT COVER AND TIGHTENED FAN HUB. TRIED FLASHING IN MULTIPLE DIFFERENT TIMING CALIBRATIONS TO CUSTOMER SUPPLIED ECM -TIMING LIGHT STILL COMING ON AT OPERATING TEMP. LOOSENED FAN HUB AND REMOVED PEANUT COVER. PINNED ENGINE. REMOVED IDLER GEAR. MADE MULTIPLE ADJUSTMENTS TO TIMING GEAR BACKLASH UNTIL CAM GEAR WAS SLIGHTLY ADVANCED WITH .012" GEAR BACKLASH. CLEANED ALL HARDWARE, APPLIED LOCTITE AND TORQUED. REINSTALLED PEANUT COVER AND FAN HUB. CHECKED WIRING DIAGRAM AGAINST CURRENT JAKE WIRING AND VERIFIED CORRECT WIRING FOR LOW/MEDIUM/HIGH. CHECKED JAKE SWITCH INTERACTION - ALL OK. REINSTALLED VALVE COVERS AND ECM PLUG. CLEARED ALL CODES. WARMED UP ENGINE AND MADE POWER RUNS. RAN AT VARYING LOADS AND CONFIRMED CODE FOR TIMING SENSORS DOES NOT BECOME ACTIVE. REMOVED ALL LEADS, REMOVED FROM DYNO. ROAD TESTED - OK. CUSTOMER AWARE ECM HAS BAD ENGINE FAN OUTPUT CAUSING ENGINE FAN TO STAY ON CONSTANTLY. 556HP/1964TQ FLYWHEEL WITH ENGINE FAN ON. 123 DEGREES MAX INTAKE AIR TEMP (70 DEGREES AMBIENT), 33 PSI MAX BOOST, 102 PSI MIN FUEL PRESSURE AT 1250 RPM'S, 830 DEGREES MAX ON PYRO AT 1250 RPM'S.

TOTAL LABOR	\$22,050.00
TOTAL PARTS	\$24,664.35
TOTAL SUBLET PARTS	\$623.51
TOTAL SUBLET LABOR	\$1,955.00

TOTAL FOR OPERATION 4	\$49,292.86

6	80038100	BOLT 3/8X1 USS GR. 8	\$3.24	
6	80LW038	WASHER LOCK 3/8	\$0.96	
3	ZEP	PARTS CLEANER	\$25.83	
1	1R1808	FILTER OIL	\$46.51	
1	1R0749	FILTER FUEL CAT	\$29.18	
1	FS1000FLG	FILTER FUEL(10 MICRON)	\$22.95	
SH07C	1	35010	SET SS STUD(CAT)	\$240.00
SH07C	1	36000	SPACER SET STAINLESS	\$220.00
	1	14969880000ORMAN	TURBO REMAN	\$1,200.00
A3	1	1685248	GASKET OIL PAN(C15)	\$343.25
	1	ZEP	PARTS CLEANER	\$8.61

A 3% SURCHARGE WILL BE APPLIED IF PAYING BY CREDIT CARD.

Terms: Net payable upon receipt. Our finance charge is computed by a single periodic rate of 1 1/2% per month, or 18% annual percentage rate. Parts ordered on emergency basis are not returnable. Items received in satisfactory condition.

CUSTOMER: X _____ DATE _____



SUSQUEHANNA TRUCK SERVICE, INC.

848 LANCASTER PIKE
QUARRYVILLE, PA 17566
Tel. : (717) 284-3760

SERVICE INVOICE NUMBER

SR3510

INVOICE DATE

06-23-25

Customer: MASON DIXON CONTRACTORS LLC
4566 PO BOX 220
WILLOW STREET, PA 17584

Ship To:

MASON DIXON CONTRACTORS LLC
WILLOW STREET, PA 17584

717 517-8841

Tax ID Date: Tax ID:

YEAR	MAKE / MODEL	VIN	LICENSE	MILEAGE	AUTH
2007	PETERBILT / 379	1XP5DBEXX7D732522	AG57650	821211M	
DEL DATE	OPEN DATE / TIME	ENGINE MODEL / SERIAL #	P.O. NUMBER	COMPLETE	UNIT/STOCK
	02-11-25 / 11:05AM	/ SDP14943		04-28-25	7-19
DEL MILEAGE	MEMO		TRANSMISSION MODEL/SERIAL #		SERVICE WRITER
			/		GNG*GNG
ENGINE HOURS	0.0	REEFER HOURS	0.0	STBY HOURS	0.0

	40	15W40-BULK	OIL ROTELLA 15W40 BULK	\$220.00
	1	GAT-G25230-0808	FITTING HYD FLAT FACE	\$19.04
	1	GAT-G25239-0808	FITTING HYD FLAT FACE	\$27.18
	1	85982	HOSE OIL AIR #8 PER FT.300DEG	\$15.99
	2	80N012	NUT 1/2 USS GR. 8	\$0.92
	1	3/16-FW	WASHER FENDER	\$0.07
	1	ZEP	PARTS CLEANER	\$8.61
	1	EB1	DEGREASER ENGINE	\$7.72
	1	EB1	DEGREASER ENGINE	\$7.72
	1	1018468	BEARING	\$60.60
	1	1304698	SLEEVE BUSHING	\$56.46
	1	1317123	BEARING IDLER GEAR	\$55.62
SHO2B	1	2341904	KIT FRONT STRUCTURE	\$665.17
	2	7481	ROLOC CLEANING DISC	\$3.94
	1	B101	CLEANER CARB/GUM CUTTER	\$5.94
	1	ZEP-45	PENETRATING SPRAY	\$20.83
WL6C	1	0R9449	PUMP OIL	\$836.96
WL6C	1	20R9847	WATER PUMP(10R8660)	\$959.99
B6I	6	2764637	NOZZLE PISTON COOLING	\$850.98
A3	1	4553839	VALVE COVER W/BREATHER	\$217.49
A3	1	4256526	HARNESS INJECTOR	\$308.12
DOOR2	1	606114	CAC PB20B/PET17703ED	\$1,100.00
	24	FIS5410	INSERT WATER CAT	\$122.88
	1	6I4421	PLATE CAT HEAD C15 .338	\$452.26
	1	2271204	GASKET SPACER PLATE	\$100.55
	1	6I4362	SHIM LINER .03433071	\$130.99
	1	ZEP	PARTS CLEANER	\$8.61
	1	700-99-307	PAINT GLOSS BLACK	\$13.21
	1	51813PTX	SEALANT	\$22.89
	2	5900196	PAINT CAT YELLOW	\$47.16
	2	4589582	CAT PRIMER PAINT	\$35.60
	3	2284947	O'RING	\$21.87
	1	B101	CLEANER CARB/GUM CUTTER	\$5.94
WL6D	1	1330125CAT	COOLER OIL	\$636.77
	1	1891814	KIT OIL COOLER SEAL	\$274.56
B5I	1	1063544	ELBOW TURBO DRAIN	\$129.01
	1	6V5266	O'RING TURBO LINE	\$14.27
	1	1142687	O'RING OIL LINE	\$6.72
	2	80038214	BOLT 3/8X21/4 USS GR 8	\$2.60
WALL	2	81FW038	WASHER FLAT 3/8 SAE GR. 8	\$0.52

A 3% SURCHARGE WILL BE APPLIED IF PAYING BY CREDIT CARD.

Terms: Net payable upon receipt. Our finance charge is computed by a single periodic rate of 1 1/2% per month, or 18% annual percentage rate. Parts ordered on emergency basis are not returnable. Items received in satisfactory condition.

CUSTOMER: X _____ DATE _____



SUSQUEHANNA TRUCK SERVICE, INC.

848 LANCASTER PIKE
QUARRYVILLE, PA 17566
Tel. : (717) 284-3760

SERVICE INVOICE NUMBER

SR3510

INVOICE DATE

06-23-25

Customer: MASON DIXON CONTRACTORS LLC
4566 PO BOX 220
WILLOW STREET, PA 17584

Ship To:

MASON DIXON CONTRACTORS LLC
WILLOW STREET, PA 17584

717 517-8841

Tax ID Date: Tax ID:

YEAR	MAKE / MODEL	VIN	LICENSE	MILEAGE	AUTH
2007	PETERBILT / 379	1XP5DBEXX7D732522	AG57650	821211M	
DEL DATE	OPEN DATE / TIME	ENGINE MODEL / SERIAL #	P.O. NUMBER	COMPLETE	UNIT/STOCK
	02-11-25 / 11:05AM	/ SDP14943		04-28-25	7-19
DEL MILEAGE	MEMO		TRANSMISSION MODEL/SERIAL #		SERVICE WRITER
			/		GNG*GNG
ENGINE HOURS	0.0	REEFER HOURS	0.0	STBY HOURS	0.0

	1	4N0699	GASKET	\$2.34
	2	07447	PAD SCOTCH-BRITE	\$3.58
	1	ZEP	PARTS CLEANER	\$8.08
	2	5089	BRAKE CLEAN	\$21.04
	4	2385080	ORING DRAIN PLUG	\$28.80
	1	15772	O'RING HYD	\$0.59
	1	ZEP	PARTS CLEANER	\$8.08
	1	07447	PAD SCOTCH-BRITE	\$1.79
	1	105	LUBRIPLATE ASSM LUBE	\$18.29
	2	7481	ROLOC CLEANING DISC	\$3.94
	2	7480	ROLOC CLEANING DISC	\$3.94
	2	ZEP	PARTS CLEANER	\$16.16
	2	5H1504	WASHER HEAD BOLT	\$4.06
	1	51813PTX	SEALANT	\$22.89
	1	5H1504	WASHER HEAD BOLT	\$2.03
B6A	1	1241855	BOLT HEAD(SHORT)	\$24.25
	1	5H1504	WASHER HEAD BOLT	\$2.03
B6A	1	1241855	BOLT HEAD(SHORT)	\$24.25
	6	0313185	BOLT CAMSHAFT GEAR	\$163.38
	6	8S9191	BOLT INJECTOR(GRADE 9)	\$26.58
	1	4589582	CAT PRIMER PAINT	\$17.80
	2	ZEP	PARTS CLEANER	\$16.16
A3	1	1761363	BASE OIL FILTER	\$369.55
	2	4N8150	SPRING RELIEF OIL	\$26.72
	2	3929208	PLUNGER RELIEF OIL	\$73.50
	2	2385084	ORING PLUG	\$23.30
	1	80038314	BOLT 3/8X31/4 USS GR. 8	\$0.90
	1	121-6	FITTING 3/8 PIPE PLUG	\$2.36
PE8719.1	1	2390582	BRACKET	\$1,098.89
	1	R955341	SENSOR ABS	\$72.13
	1	HE5987	HOSE BRAKE 25(26-03425-022)	\$39.23
	12	9L8925	VALVE COVER BOLT B MODEL	\$3.84
	1	24200PTX	THREADLOCKER BLUE	\$7.96
	2	ZEP	PARTS CLEANER	\$16.16
	2	5900196	PAINT CAT YELLOW	\$47.16
	1	TA-29	SEALANT GREY RTV	\$8.56
	6	7E6508	CAP INJECTOR	\$75.24
	1	3824514	PAINT CUMMINS BLACK	\$29.16
	2	BRZ-9236	CLAMP SILICONE HOSE	\$3.26
	1	1262702	GASKET TURBO LINE	\$14.54

A 3% SURCHARGE WILL BE APPLIED IF PAYING BY CREDIT CARD.

Terms: Net payable upon receipt. Our finance charge is computed by a single periodic rate of 1 1/2% per month, or 18% annual percentage rate. Parts ordered on emergency basis are not returnable. Items received in satisfactory condition.

CUSTOMER: X _____ DATE _____



SUSQUEHANNA TRUCK SERVICE, INC.

848 LANCASTER PIKE
QUARRYVILLE, PA 17566
Tel. : (717) 284-3760

SERVICE INVOICE NUMBER

SR3510

INVOICE DATE

06-23-25

Customer: MASON DIXON CONTRACTORS LLC
4566 PO BOX 220
WILLOW STREET, PA 17584

Ship To:

MASON DIXON CONTRACTORS LLC
WILLOW STREET, PA 17584

717 517-8841

Tax ID Date: Tax ID:

YEAR	MAKE / MODEL	VIN	LICENSE	MILEAGE	AUTH
2007	PETERBILT / 379	1XP5DBEXX7D732522	AG57650	821211M	
DEL DATE	OPEN DATE / TIME	ENGINE MODEL / SERIAL #	P.O. NUMBER	COMPLETE	UNIT/STOCK
	02-11-25 / 11:05AM	/ SDP14943		04-28-25	7-19
DEL MILEAGE	MEMO		TRANSMISSION MODEL/SERIAL #		SERVICE WRITER
			/		GNG*GNG
ENGINE HOURS	0.0	REEFER HOURS	0.0	STBY HOURS	0.0

1	1986068	GASKET	\$13.96
1	4988280CUM	GASKET POWER STEERING	\$5.61
1	1S4295	GASKET TURBO MTG T6	\$11.84
1	AUV-3957	PLUG CUP EXPANSION 3/4	\$0.63
2	80038114	BOLT 3/8X11/4 USS GR. 8	\$1.22
2	81FW038	WASHER FLAT 3/8 SAE GR. 8	\$0.16
1	2109246	O'RING	\$12.55
2	80038114	BOLT 3/8X11/4 USS GR. 8	\$1.22
2	80LW038	WASHER LOCK 3/8	\$0.30
2	81FW038	WASHER FLAT 3/8 SAE GR. 8	\$0.16
1	1993212	LINE TURBO FEED	\$111.46
1	1367226	O'RING	\$6.75
1	2233505	GASKET AIR COMPRESSOR	\$21.81
10	WT15W	WIRE TIE 15 WIDE	\$5.30
3	3669748	KIT IPR & IVA PIGTAIL	\$123.21
1	ZEP	PARTS CLEANER	\$8.08
1	1016596	HOSE COMPRESSOR	\$48.74
2	GAT-G25180-0606	FITTING HYDRAULIC 90	\$70.12
2	85981	HOSE OIL AIR #6 PER FT.300DEG	\$29.08
3	5-030	LOOM 3/4 BY FT.	\$1.32
5	5P5678	GASKET V/CVR(6295774)	\$111.90
1	2644297	SENSOR	\$70.91
1	2385080	ORING DRAIN PLUG	\$7.20
2	BRZ-9210	CLAMP SILICONE HOSE	\$2.76
1	1375636	DRAIN TUBE	\$282.19
1	1946724	SENSOR AIR INLET PRESSURE	\$254.06
1	VL2443	VALVE PETE WATER	\$44.71
2	1712-128	FITTING HOSE NIPPLE	\$26.10
24	HE3755	HOSE HTR 3/4 SIL(INCH)	\$20.88
1	5-032	LOOM 1 BY FT.	\$0.60
1	6V5048	O'RING BOOST SENSOR	\$5.21
1	GAT-G25175-0606	FITTING HYDRAULIC	\$32.27
1	GAT-G25180-0606	FITTING HYDRAULIC 90	\$35.06
2	85981	HOSE OIL AIR #6 PER FT.300DEG	\$29.08
2	5-030	LOOM 3/4 BY FT.	\$0.88
1	10604	CLAMP INSULATED 7/8 X 3/8	\$2.18
1	80038100	BOLT 3/8X1 USS GR. 8	\$0.54
1	80LW038	WASHER LOCK 3/8	\$0.15
1	80FW038	WASHER FLAT 3/8 USS GR. 8	\$0.16
1	2769507	HOSE COMPRESSOR	\$31.98

A 3% SURCHARGE WILL BE APPLIED IF PAYING BY CREDIT CARD.

Terms: Net payable upon receipt. Our finance charge is computed by a single periodic rate of 1 1/2% per month, or 18% annual percentage rate. Parts ordered on emergency basis are not returnable. Items received in satisfactory condition.

CUSTOMER: X

DATE

SUSQUEHANNA TRUCK SERVICE, INC.

848 LANCASTER PIKE
QUARRYVILLE, PA 17566
Tel. : (717) 284-3760

SERVICE INVOICE NUMBER

SR3510

INVOICE DATE

06-23-25

Customer: MASON DIXON CONTRACTORS LLC
4566 PO BOX 220
WILLOW STREET, PA 17584

Ship To:

MASON DIXON CONTRACTORS LLC
WILLOW STREET, PA 17584

717 517-8841

Tax ID Date: Tax ID:

YEAR	MAKE / MODEL	VIN	LICENSE	MILEAGE	AUTH
2007	PETERBILT / 379	1XP5DBEXX7D732522	AG57650	821211M	
DEL DATE	OPEN DATE / TIME	ENGINE MODEL / SERIAL #	P.O. NUMBER	COMPLETE	UNIT/STOCK
	02-11-25 / 11:05AM	/ SDP14943		04-28-25	7-19
DEL MILEAGE	MEMO		TRANSMISSION MODEL/SERIAL #		SERVICE WRITER
			/		GNG*GNG
ENGINE HOURS	0.0	REEFER HOURS	0.0	STBY HOURS	0.0

PE8800.1	2	BRZ-9210	CLAMP SILICONE HOSE	\$2.76
	1	81058112	BOLT 5/8X11/2 SAE GR. 8	\$3.04
	1	2078128	TUBE BREATHING	\$52.88
	1	80N038	NUT 3/8 USS GR. 8	\$0.17
	10	WT15W	WIRE TIE 15 WIDE	\$5.30
	10	WT8	WIRE TIE 8	\$1.10
	6	WT8	WIRE TIE 8	\$0.66
	2	DSWS4	MOUNT ZIP TIE	\$6.02
	6	WT8	WIRE TIE 8	\$0.66
	1	K121039HD	BELT	\$103.00
	1	K060525HD	BELT	\$42.86
	2	X007785-ST5	CLAMP PREFORMED 5" STAINLESS	\$25.58
	1	EP50EL30111A	PIPE EXHAUST LOWER 90	\$156.73
	1	P206607	CLAMP TURBO 5	\$57.32
	4	13-03096	ISOLATOR CAC	\$133.92
	2	TWT-20	WIRE TIE MOUNTABLE	\$9.70
	1	80014034	BOLT 1/4X3/4 USS GR. 8	\$0.22
	2	81FW014	WASHER FLAT 1/4 SAE GR. 8	\$0.14
	1	80LN014	NUT LOCK 1/4 USS GR. 8	\$0.10
	1	17589	CLAMP INSULATED 2 X 3/8	\$3.09
	1	80516100	BOLT 5/16X1 USS GR. 8	\$0.40
	1	80FW516	WASHER FLAT 5/16 USS GR. 8	\$0.22
	1	81FW516	WASHER FLAT 5/16 SAE GR. 8	\$0.06
	1	80LN516	NUT LOCK 5/16 USS GR. 8	\$0.14
	1	PB-13002	PIPE TURBO	\$183.07
	1	ZEP	PARTS CLEANER	\$8.08
	2	HE9622	HOSE CAC	\$72.02
	4	B9224-0406	CLAMP CAC HOSE	\$36.92
	1	J000232	CLAMP EXHAUST 5	\$16.05
	1	5900196	PAINT CAT YELLOW	\$23.58
	1	80FW516	WASHER FLAT 5/16 USS GR. 8	\$0.22
	1	80LN516	NUT LOCK 5/16 USS GR. 8	\$0.14
	1	10606	CLAMP INSULATED 1-1/4 X 3/8	\$2.63
	1	80516100	BOLT 5/16X1 USS GR. 8	\$0.40
	2	81FW516	WASHER FLAT 5/16 SAE GR. 8	\$0.12
	1	80LN516	NUT LOCK 5/16 USS GR. 8	\$0.14
	12	EF50300SI	PIPE EXHAUST FLEX 5 BY INCH	\$29.40
	1	X004484	CLAMP BAND 5 STAINLESS	\$21.21
	1	TOM-5406-P-4	FITTING 1/4 PIPE PLUG STEEL	\$0.60
PE8803.1	1	1063942	BLOCK	\$156.13

A 3% SURCHARGE WILL BE APPLIED IF PAYING BY CREDIT CARD.

Terms: Net payable upon receipt. Our finance charge is computed by a single periodic rate of 1 1/2% per month, or 18% annual percentage rate. Parts ordered on emergency basis are not returnable. Items received in satisfactory condition.

CUSTOMER: X _____ DATE _____



SUSQUEHANNA TRUCK SERVICE, INC.

848 LANCASTER PIKE
QUARRYVILLE, PA 17566
Tel. : (717) 284-3760

SERVICE INVOICE NUMBER

SR3510

INVOICE DATE

06-23-25

Customer: MASON DIXON CONTRACTORS LLC
4566 PO BOX 220
WILLOW STREET, PA 17584

Ship To:

MASON DIXON CONTRACTORS LLC
WILLOW STREET, PA 17584

717 517-8841

Tax ID Date: Tax ID:

YEAR	MAKE / MODEL	VIN	LICENSE	MILEAGE	AUTH
2007	PETERBILT / 379	1XP5DBEXX7D732522	AG57650	821211M	
DEL DATE	OPEN DATE / TIME	ENGINE MODEL / SERIAL #	P.O. NUMBER	COMPLETE	UNIT/STOCK
	02-11-25 / 11:05AM	/ SDP14943		04-28-25	7-19
DEL MILEAGE	MEMO		TRANSMISSION MODEL/SERIAL #		SERVICE WRITER
			/		GNG*GNG
ENGINE HOURS	0.0	REEFER HOURS	0.0	STBY HOURS	0.0

2	07-02552	BUSHING RADIATOR SUPPORT	\$28.22
2	05-09057	WASHER PETE MOTOR MOUNT	\$25.92
1	80LN038	NUT LOCK 3/8 USS GR. 8	\$0.22
2	CT-300-L-SS	CLAMP HOSE CONSTANT TORQUE	\$16.24
2	10601	CLAMP INSULATED 1/2 X 3/8	\$3.26
1	16-4206	O'RING #6 GREEN	\$0.40
2	P181186	FILTER AIR	\$298.12
1	ZEP	PARTS CLEANER	\$8.08
1	1090072	O'RING OIL LINE	\$10.24
1	1090078	O'RING OIL LINE	\$9.19
2	16-4208	A/C ORING #8	\$0.76
1	F31-6063	ACCUMULATOR	\$133.11
1	16-4210	O'RING #10 A/C	\$0.48
2	16-4212	O'RING #12 A/C	\$1.02
2	TWT-20	WIRE TIE MOUNTABLE	\$9.70
10	WT15W	WIRE TIE 15 WIDE	\$5.30
3	R134A	FREON	\$84.78
2	5H7704	O'RING AIR INTAKE	\$34.18
1	4150ATC	SCHRADER VALVE	\$6.85
1	62032	CLAMP HOSE	\$0.73
1	90-N-038	NUT 3/8 STAINLESS USS	\$0.22
1	7238-12	PLUG ORING	\$7.32
40	15W40-BULK	OIL ROTELLA 15W40 BULK	\$220.00
6	2431159	BOLT VALVE COVER	\$69.90
2	BRZ-9216	CLAMP	\$2.84
3	5-032	LOOM 1 BY FT.	\$1.80
2	TWT-20	WIRE TIE MOUNTABLE	\$9.70
4	CT-350-L-SS	CLAMP HOSE CONSTANT TORQUE	\$32.88
2	BRZ-HTM700	CLAMP	\$8.28
2	D1029-8701	HOSE CAC	\$235.98
4	B9224-0406	CLAMP CAC HOSE	\$36.92
1	TOM-5502-12	FITTING STREET L 90 STEEL	\$9.72
1	14-01661	SHEILD HEAT 5	\$43.35
1	62096	CLAMP HOSE	\$1.54
1	7481	ROLOC CLEANING DISC	\$1.97
2	BRZ-9216	CLAMP	\$2.84
4	HE5420	HOSE HEATER 1	\$31.60
4	WT15W	WIRE TIE 15 WIDE	\$2.12
1	15W40-BULK	OIL ROTELLA 15W40 BULK	\$5.50
1	2644297	SENSOR	\$70.91

A 3% SURCHARGE WILL BE APPLIED IF PAYING BY CREDIT CARD.

Terms: Net payable upon receipt. Our finance charge is computed by a single periodic rate of 1 1/2% per month, or 18% annual percentage rate. Parts ordered on emergency basis are not returnable. Items received in satisfactory condition.

CUSTOMER: X _____ DATE _____



SUSQUEHANNA TRUCK SERVICE, INC.

848 LANCASTER PIKE
QUARRYVILLE, PA 17566
Tel. : (717) 284-3760

SERVICE INVOICE NUMBER

SR3510

INVOICE DATE

06-23-25

Customer: MASON DIXON CONTRACTORS LLC
4566 PO BOX 220
WILLOW STREET, PA 17584

Ship To:

MASON DIXON CONTRACTORS LLC
WILLOW STREET, PA 17584

717 517-8841

Tax ID Date: Tax ID:

YEAR	MAKE / MODEL	VIN	LICENSE	MILEAGE	AUTH
2007	PETERBILT / 379	1XP5DBEXX7D732522	AG57650	821211M	
DEL DATE	OPEN DATE / TIME	ENGINE MODEL / SERIAL #	P.O. NUMBER	COMPLETE	UNIT/STOCK
	02-11-25 / 11:05AM	/ SDP14943		04-28-25	7-19
DEL MILEAGE	MEMO		TRANSMISSION MODEL/SERIAL #		SERVICE WRITER
			/		GNG*GNG
ENGINE HOURS	0.0	REEFER HOURS	0.0	STBY HOURS	0.0

	1	8L2786	O'RING SENSOR	\$7.20
	1	1P0436	GASKET PRIMING PUMP	\$2.22
	1	2255222	VALVE SAFETY	\$26.06
	1	BRZ-9216	CLAMP	\$1.42
	1	2812725	VALVE CHECK(1367227 ORING)	\$50.62
	1	1367227	O'RING	\$8.09
	1	3394983	KIT SPRING	\$103.57
	3	WT15	WIRE TIE 15	\$0.90
B6E	1	2016617	SENSOR CAM POSITION	\$223.70
	1	2033940	O'RING 1945338 SENSOR	\$3.22
	1	05103	CLEANER CONTACT	\$18.99
	1	24200PTX	THREADLOCKER BLUE	\$7.96
	3	8T8737	PLUG	\$1.80
	2	WT8	WIRE TIE 8	\$0.22
	1	3561448B	KIT SILVER DECOMP & BALANCED W	\$7,435.08
	1	1325317U	HARNESS ENG GOOD USED	\$364.50
	14	EC3555BULK	ANTIFREEZE ELC CAT(BULK)	\$138.88
B5H	5	9Y3368	SHIM LINER .0323622	\$259.80
S586	1	SUBP	SUBLET PARTS	\$623.51
		GUIDES, SEALS, SEATS, BEARINGS, ORINGS		
S586	1	SUBL	SUBLET LABOR	\$1,955.00
		CLEAN/TEST/SURFACE/REBUILD CYL HEAD		

5 DURING REPAIRS FOUND PASSENGER STEER TIRE FLAT.
REMOVED PASSENGER STEER TIRE/WHEEL AND SENT OUT TO HAVE REPAIRED.
REINSTALLED AFTER REPAIRS.

TOTAL SUBLET LABOR \$64.40

TOTAL FOR OPERATION 5 \$64.40

S594	1	SUBL	SUBLET LABOR	\$6.90
		TIRE STEM		
S594	1	SUBL	SUBLET LABOR	\$57.50
		REPAIR FLAT TIRE		

6 DURING REPAIRS FOUND CARRIER BEARING RUBBER OUT OF PLACE.
WHILE RUNNING ON DYNO, SMELLED SMOKE AND FOUND CARRIER BEARING SMOKING
EXCESSIVELY. REMOVED FRONT DRIVESHAFT ASSEMBLY. HEATED, BEAT AND
PULLED FROZEN YOKE OFF DRIVESHAFT. CUT OFF OLD CARRIER BEARING.
CLEANED DRIVESHAFT AND YOKE. R&R CARRIER BEARING. REINSTALLED YOKE

A 3% SURCHARGE WILL BE APPLIED IF PAYING BY CREDIT CARD.

Terms: Net payable upon receipt. Our finance charge is computed by a single periodic rate of 1 1/2% per month, or 18% annual percentage rate. Parts ordered on emergency basis are not returnable. Items received in satisfactory condition.

CUSTOMER: X _____ DATE _____

Horsepower Run Report



Susquehanna Truck Service
848 Lancaster Pike
Quarryville PA 17566
(717) 284-3760



Customer Name: MDX

Customer Address:

Customer City/State/Zip:

Customer Phone:

Customer Mobile Phone:

Customer Contact:

Engine ID No: SDF14943

Engine Make: CAT

Engine Model: C-15

Other Engine Info: SR3510

W.O. No:

Dyno Operator:

Vehicle Serial Number: 732522

Vehicle Make: PETERBILT

Vehicle Model: 389

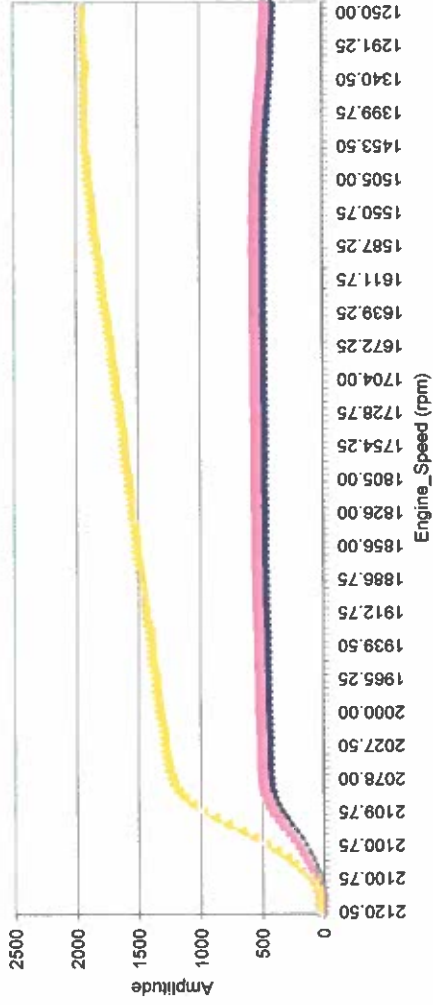
Vehicle Plate Number: AG57850

Mileage: 821211

Year: 2007

Color: RED

Other Vehicle Info:



Pre Test Comments:

Post Test Comments:

Abs Scale Average Units Channel Name	(x 1) Engine_Speed (rpm)	(x 1) C_VPwr (HP)	(x 1) Est_Flywheel_HP (HP)	(x 1) Est_Flywheel_Trq (LBS-FT)	(x 1) e_Eng_Coolant_T (Deg F) emp	(x 1) e_Int_Mid_Temp (Deg F.)	(x 1) e_Boost_Press (psi)	(x 1) Boost_PSI (PSI)	(x 1) Fuel_Press (PSI) (g)	(x 1) Exh_Temp_Post_T (Deg F) urbo
1	2120.50	18	20	48	183.0	102.0	8	8	122	527.4
2	2120.50	18	20	48	183.0	102.0	8	8	120	525.5
3	2118.50	18	20	50	183.0	102.0	8	8	120	525.6
4	2115.00	22	24	60	183.0	100.0	9	9	120	523.5
5	2109.75	32	34	85	183.0	100.0	9	9	120	523.4
6	2100.75	45	50	125	183.0	100.0	10	10	121	523.5
7	2102.50	68	72	180	183.0	100.0	11	11	119	523.6
8	2113.25	91	98	243	183.0	100.0	12	12	118	523.6
9	2106.00	113	124	310	183.0	100.0	13	13	119	525.5
10	2104.25	143	157	392	183.0	100.0	14	15	120	527.5
11	2100.75	171	189	474	183.0	100.0	16	17	118	529.5
12	2097.25	204	227	588	183.0	100.0	16	18	121	534.9
13	2099.00	242	266	667	183.0	100.0	18	21	118	539.3
14	2106.00	285	317	790	183.0	100.0	21	22	118	543.1
15	2106.00	320	357	889	183.0	100.0	23	24	120	547.3

Abs Scale Average Channel Name	(x 1) Engine_Speed (rpm)	(x 1) (HP) C_VPwr	(x 1) (HP) Est_Flywheel_HP	(x 1) (LBS-FT) Est_Flywheel_Trq	(x 1) (Deg F) e_Eng_Coolant_T emp	(x 1) (Deg F.) e_Int_Mid_Temp	(x 1) (psi) e_Boost_Press	(x 1) (PSI) Boost_PSI	(x 1) (g) Fuel_Press (PSI)	(x 1) (Deg F) Exh_Temp_Post_T urbo
16	2109.75	358	398	991	183.0	102.0	25	26	116	553.2
17	2099.00	386	429	1073	183.0	102.0	26	27	116	557.2
18	2097.25	407	454	1137	183.0	102.0	26	27	118	568.9
19	2099.00	424	474	1186	185.0	102.0	27	27	117	574.9
20	2088.50	435	486	1222	185.0	104.0	27	28	117	580.9
21	2078.00	439	490	1239	185.0	105.0	27	28	117	586.8
22	2069.50	443	497	1260	185.0	105.0	27	28	118	594.6
23	2055.75	445	497	1271	185.0	107.0	28	28	116	600.8
24	2040.75	444	497	1280	185.0	107.0	28	28	114	609.4
25	2034.00	445	499	1287	186.0	107.0	28	28	117	614.5
26	2027.50	446	500	1296	186.0	109.0	28	28	114	618.4
27	2025.75	444	500	1295	186.0	109.0	28	29	115	620.5
28	2021.00	448	501	1302	186.0	109.0	28	29	115	624.5
29	2011.25	452	504	1317	186.0	111.0	28	29	115	626.3
30	2003.25	453	506	1327	186.0	111.0	28	29	114	630.3
31	2000.00	454	510	1339	186.0	111.0	28	29	115	632.3
32	1990.50	457	510	1346	188.0	113.0	29	29	116	634.3
33	1992.00	456	512	1349	188.0	113.0	28	29	113	636.3
34	1981.00	458	513	1360	188.0	113.0	29	29	114	638.2
35	1973.00	459	512	1364	188.0	113.0	29	29	115	640.4
36	1965.25	459	512	1367	188.0	113.0	29	29	112	644.1
37	1962.25	459	514	1377	188.0	113.0	29	30	114	646.1
38	1953.00	463	517	1389	188.0	113.0	29	30	112	648.1
39	1942.50	463	519	1402	190.0	113.0	29	30	111	650.1
40	1941.00	462	517	1399	190.0	114.0	30	30	116	652.1
41	1939.50	465	518	1403	190.0	114.0	30	30	111	654.0
42	1932.00	465	520	1412	190.0	114.0	30	31	112	657.8
43	1936.50	465	520	1411	190.0	114.0	30	31	112	659.9
44	1921.50	468	524	1432	190.0	114.0	30	31	111	661.9
45	1917.00	470	528	1446	190.0	116.0	30	31	113	664.0
46	1912.75	471	527	1448	190.0	116.0	30	31	115	665.8
47	1909.75	471	528	1453	190.0	116.0	30	31	114	669.9
48	1899.75	474	529	1464	190.0	116.0	30	31	114	671.8
49	1899.75	474	532	1470	190.0	116.0	30	31	114	673.9
50	1896.75	476	533	1476	190.0	116.0	30	31	113	675.9
51	1886.75	477	534	1485	190.0	116.0	31	31	115	677.8
52	1879.75	478	534	1493	190.0	118.0	31	31	111	677.9
53	1879.75	480	537	1500	190.0	118.0	31	31	114	681.7
54	1865.50	479	537	1513	190.0	118.0	31	31	109	681.7
55	1862.75	480	538	1517	190.0	118.0	31	32	110	683.7
56	1856.00	479	538	1522	190.0	118.0	31	32	115	685.7
57	1845.00	481	536	1527	190.0	118.0	31	32	111	685.6
58	1841.00	481	538	1534	190.0	118.0	31	32	114	687.6
59	1839.50	480	537	1532	190.0	118.0	31	32	111	689.7
60	1831.50	483	540	1547	190.0	118.0	31	32	112	689.7
61	1826.00	481	541	1555	190.0	118.0	32	32	113	691.6
62	1820.75	484	542	1562	190.0	120.0	32	32	112	691.6
63	1820.75	484	540	1558	190.0	120.0	31	32	109	693.6
64	1809.00	484	542	1575	190.0	120.0	32	32	114	693.6
65	1801.00	485	543	1583	190.0	120.0	32	32	109	695.7
66	1805.00	487	545	1585	190.0	120.0	32	32	109	695.5
67	1784.50	486	543	1600	190.0	120.0	32	32	108	695.5
68	1778.00	486	543	1605	190.0	120.0	32	32	109	697.6
69	1770.50	484	543	1612	192.0	120.0	32	33	110	697.6

Abs Scale Average Units Channel Name	(x 1) Engine_Speed (rpm)	(x 1) (HP) C_VPwr	(x 1) (HP) Est_Flywheel_HP	(x 1) (LBS-FT) Est_Flywheel_Trq	(x 1) (Deg F.) e_Eng_Coolant_Temp	(x 1) (Deg F.) e_Int_Mfld_Temp	(x 1) (psi) e_Boost_Press	(x 1) (PSI) Boost_PSI	(x 1) (g) Fuel_Press (PSI)	(x 1) (Deg F) Exh_Temp_Post_Turbo
70	1763.00	484	542	1615	192.0	120.0	32	33	111	698.9
71	1754.25	484	542	1621	192.0	120.0	32	33	113	699.6
72	1750.75	483	540	1620	192.0	120.0	32	33	108	701.5
73	1745.75	482	541	1627	192.0	120.0	32	33	108	701.5
74	1741.00	483	544	1640	192.0	120.0	32	33	112	703.5
75	1736.00	487	545	1649	192.0	120.0	32	33	110	703.5
76	1728.75	487	544	1652	192.0	120.0	32	33	112	705.5
77	1727.75	488	545	1657	192.0	122.0	32	33	108	707.5
78	1719.25	487	547	1672	192.0	122.0	32	33	111	707.5
79	1707.50	490	548	1685	192.0	122.0	32	33	107	709.5
80	1705.25	488	549	1690	192.0	122.0	32	33	112	709.4
81	1704.00	490	548	1689	192.0	122.0	32	33	107	711.5
82	1698.25	490	549	1698	192.0	122.0	32	33	106	712.2
83	1686.75	490	549	1710	192.0	122.0	32	33	109	713.4
84	1688.00	492	551	1715	192.0	122.0	32	33	109	713.4
85	1682.25	491	551	1722	192.0	122.0	32	33	106	715.3
86	1672.25	491	550	1727	192.0	122.0	32	33	110	715.4
87	1666.50	491	550	1733	192.0	122.0	32	33	106	717.3
88	1655.50	493	550	1744	192.0	122.0	32	33	108	717.4
89	1655.50	492	552	1751	192.0	122.0	32	33	110	719.3
90	1651.25	494	552	1755	192.0	122.0	32	33	111	719.3
91	1639.25	495	552	1777	192.0	123.0	32	33	105	721.3
92	1637.25	496	554	1795	192.0	123.0	32	33	109	721.3
93	1627.50	494	556	1795	192.0	123.0	32	33	108	721.3
94	1626.50	496	554	1790	192.0	123.0	32	33	107	723.3
95	1617.00	495	555	1801	192.0	123.0	32	33	109	725.3
96	1611.75	496	555	1809	192.0	123.0	32	33	110	725.2
97	1602.50	495	553	1814	192.0	123.0	32	33	110	725.3
98	1604.50	496	553	1812	192.0	123.0	32	33	108	727.2
99	1600.50	498	556	1824	192.0	123.0	32	33	109	727.5
100	1588.25	497	556	1839	192.0	123.0	32	33	109	729.2
101	1587.25	495	556	1838	192.0	123.0	32	33	105	731.2
102	1571.25	496	556	1857	192.0	123.0	32	33	106	731.2
103	1560.50	496	554	1863	192.0	123.0	32	33	108	731.2
104	1559.50	496	554	1865	192.0	123.0	32	33	106	733.2
105	1558.50	494	554	1868	192.0	123.0	32	33	108	733.3
106	1550.75	494	554	1876	192.0	123.0	32	33	107	735.2
107	1541.25	495	553	1885	192.0	123.0	32	33	105	737.1
108	1542.25	494	553	1882	192.0	123.0	32	33	107	737.1
109	1524.25	492	550	1896	192.0	123.0	32	33	106	739.1
110	1519.75	491	551	1904	192.0	123.0	32	32	108	739.1
111	1505.00	489	549	1917	192.0	123.0	32	32	104	741.1
112	1504.25	487	548	1912	192.0	123.0	32	32	105	743.0
113	1492.50	486	546	1922	192.0	123.0	31	32	105	743.1
114	1486.25	483	541	1913	192.0	123.0	31	31	105	745.0
115	1466.25	482	541	1939	192.0	123.0	31	31	105	745.1
116	1453.50	480	538	1943	192.0	123.0	30	31	104	747.1
117	1449.25	477	535	1940	192.0	123.0	30	30	105	750.7
118	1432.50	475	529	1939	192.0	123.0	30	30	104	753.0
119	1423.75	471	527	1946	192.0	123.0	29	30	104	755.0
120	1411.50	466	522	1943	192.0	123.0	28	29	104	756.9
121	1399.75	461	518	1944	192.0	123.0	29	29	104	759.0
122	1390.25	459	516	1949	192.0	123.0	28	29	104	760.9
123	1377.25	454	508	1938	192.0	123.0	28	28	104	766.8

Abs Scale Average Units Channel Name	(x 1) Engine_Speed (rpm)	(x 1) C_VPwr (HP)	(x 1) Est_Flywheel_HP (HP)	(x 1) Est_Flywheel_Trq (LBS-FT)	(x 1) e_Eng_Coolant_T emp (Deg F.)	(x 1) e_Int_Mfld_Temp (Deg F.)	(x 1) e_Boost_Press (psi)	(x 1) Boost_PSI (PSI)	(x 1) Fuel_Press (PSI) (g)	(x 1) Exh_Temp_Post_T urbo (Deg F)
124	1366.75	451	505	1940	192.0	123.0	28	28	103	768.8
125	1356.50	446	501	1941	192.0	123.0	27	27	103	772.7
126	1340.50	442	497	1947	192.0	122.0	26	27	103	774.7
127	1336.75	439	493	1937	192.0	122.0	26	27	103	778.6
128	1323.50	436	486	1930	194.0	122.0	26	26	102	782.8
129	1309.50	434	485	1944	194.0	122.0	26	26	103	788.5
130	1304.75	430	484	1947	192.0	122.0	25	25	102	792.5
131	1291.25	429	481	1955	194.0	122.0	25	25	102	798.4
132	1289.25	426	478	1949	194.0	120.0	24	25	102	802.3
133	1272.75	424	476	1964	194.0	120.0	24	25	102	806.3
134	1264.50	421	473	1963	194.0	120.0	24	24	102	815.2
135	1255.50	419	469	1963	194.0	120.0	24	24	102	820.1
136	1250.00	417	466	1958	194.0	120.0	23	24	102	826.1
137	1249.25	415	466	1958	194.0	120.0	23	23	102	830.1