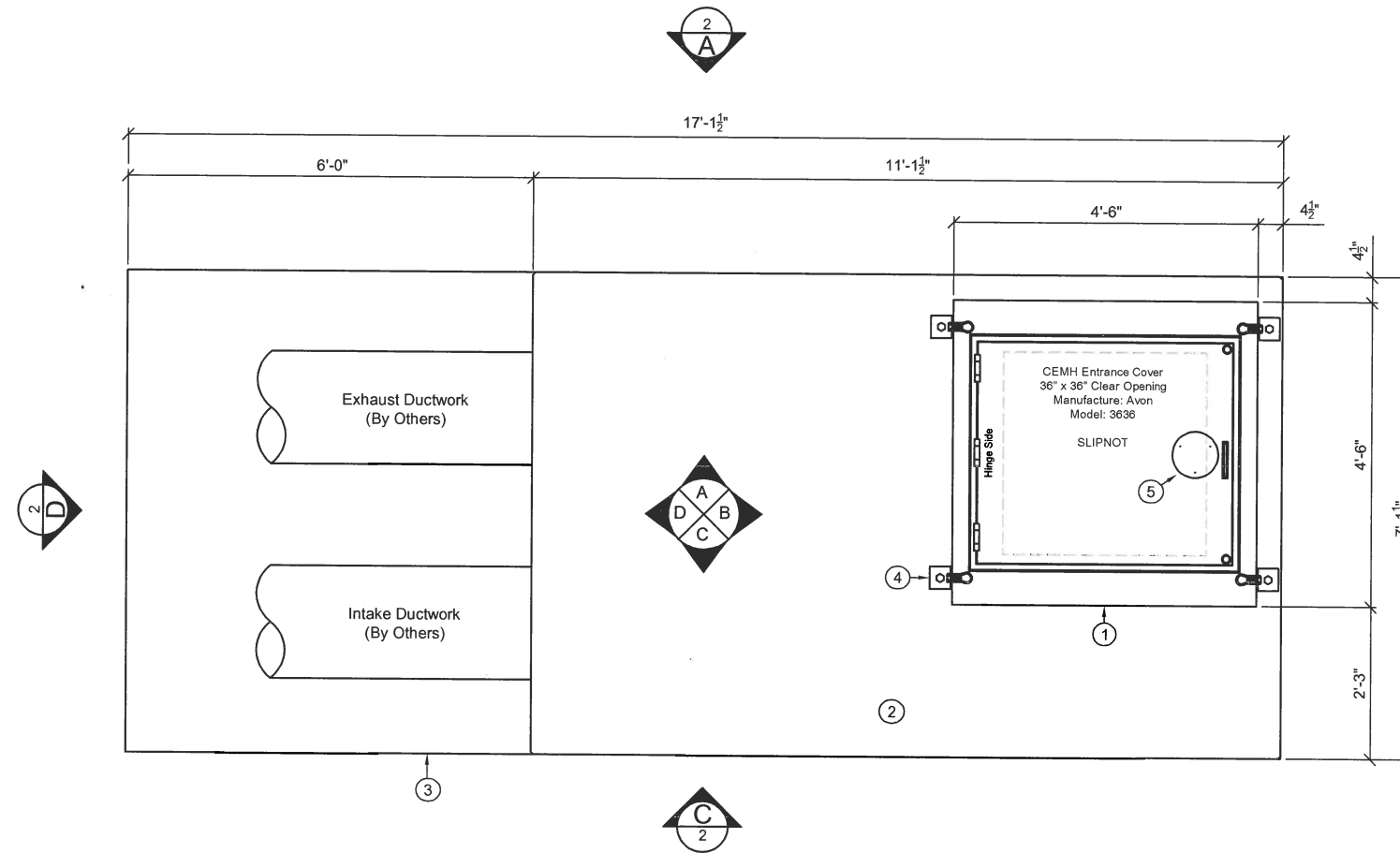


| Parts List | | | |
|------------|-----|------------------------|--|
| ITEM | QTY | NAME | NOTE |
| 1 | 1 | CEMH 18" Tall Slab Top | Avon 3636 Hatch w/ 36" x 36" Clear Opening |
| 2 | 1 | CEMH 610 Doghouse | Standard |
| 3 | 1 | CEMH 616 Top | Standard |
| 4 | 4 | Level Plate Bracket | for Slab Top (L Bracket 4"x4"x1/4") |
| 5 | 1 | DR Core | 7-pin, w/C & A Keys |



OVERHEAD VIEW
SCALE: 3/8" = 1'-0"

SHEET INDEX:

| | |
|-----------------|---------------------------|
| CEMH616-1B: | OVERHEAD VIEW |
| CEMH616-2C: | EXTERIOR ELEVATIONS |
| CEMH616-3A: | CEILING PLAN VIEWS |
| CEMH616-4A: | FLOOR PLAN VIEWS |
| CEMH616-5A: | INTERIOR ELEVATION "A" |
| CEMH616-6B: | INTERIOR ELEVATION "B" |
| CEMH616-7A: | INTERIOR ELEVATION "C" |
| CEMH616-8C: | INTERIOR ELEVATION "D" |
| CEMH616-E1: | ONE-LINE & PANEL SCHEDULE |
| CEMH-DETAILS-1: | DETAIL SHEETS |
| CEMH-DETAILS-2: | DETAIL SHEETS |

STRUCTURAL NOTES:

SPECIFICATIONS:

DESIGN: ACI 318-11 BUILDING CODE
LOADING: ASTM C-857 "MINIMUM STRUCTURAL DESIGN LOADING FOR UNDERGROUND PRECAST CONCRETE UTILITY STRUCTURES"

MATERIALS:

CONCRETE: ASTM C150 TYPE II & V LOW ALKALI CEMENT
28-DAY COMPRESSIVE STRENGTH $f_c = 7000$ PSI
 $f_c = 5000$ PSI TOP SLAB
REBAR: ASTM A615 GRADE 60
WWR: ASTM A1064 GRADE 65

DESIGN LOADS:

LIVE LOAD: AASHTO HS20-44 WITH UP TO 30% IMPACT
80 PSF LATERAL LIVE LOAD SURCHARGE
300 PSF EQUIPMENT/PEDESTRIAN
SEISMIC: SS = 2.8
40 PCF LATERAL PRESSURE
SOIL: 5'-11" SOIL COVER
WATER TABLE BELOW VAULT
120 PCF SOIL DENSITY
65 PCF LATERAL SOIL PRESSURE ABOVE WATER TABLE

GENERAL NOTES:

- ALL JOINTS SHALL BE SEALED USING CONSEAL CS-101 BUTYL RUBBER ROPE.
- ALL ELECTRICAL COMPONENTS ARE UL LISTED.
- ALL MECHANICAL COMPONENTS ARE LISTED.
- ALL PLUMBING COMPONENTS ARE LISTED & MINIMUM PLUMBING PIPE SIZE IS 3/4".

EXTERIOR FINISH:

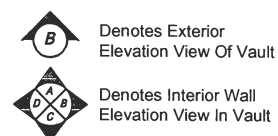
2 Part Black Emulsion
Part A: Coal Tar Epoxy #B69B60
Part B: Epoxy Polyamide #B69V60

INTERIOR FINISH:

Floor: Smooth Unfinished Concrete
Walls: Smooth White Paint
Ceiling: Smooth White Paint
Doghouse: Smooth White Paint

CEMH WEIGHT:

Top & Doghouse: 54,000 lbs
Base: 32,000 lbs



SUBMITTAL REVIEW

- | | |
|--|--|
| <input type="checkbox"/> APPROVED | <input type="checkbox"/> APPROVED WITH CHANGES NOTED |
| <input type="checkbox"/> REVISE AND RESUBMIT | <input type="checkbox"/> REJECTED |

REVIEW IS FOR GENERAL CONFORMANCE WITH THE DESIGN CONCEPT AND THE INFORMATION GIVEN IN THE CONSTRUCTION DOCUMENTS.

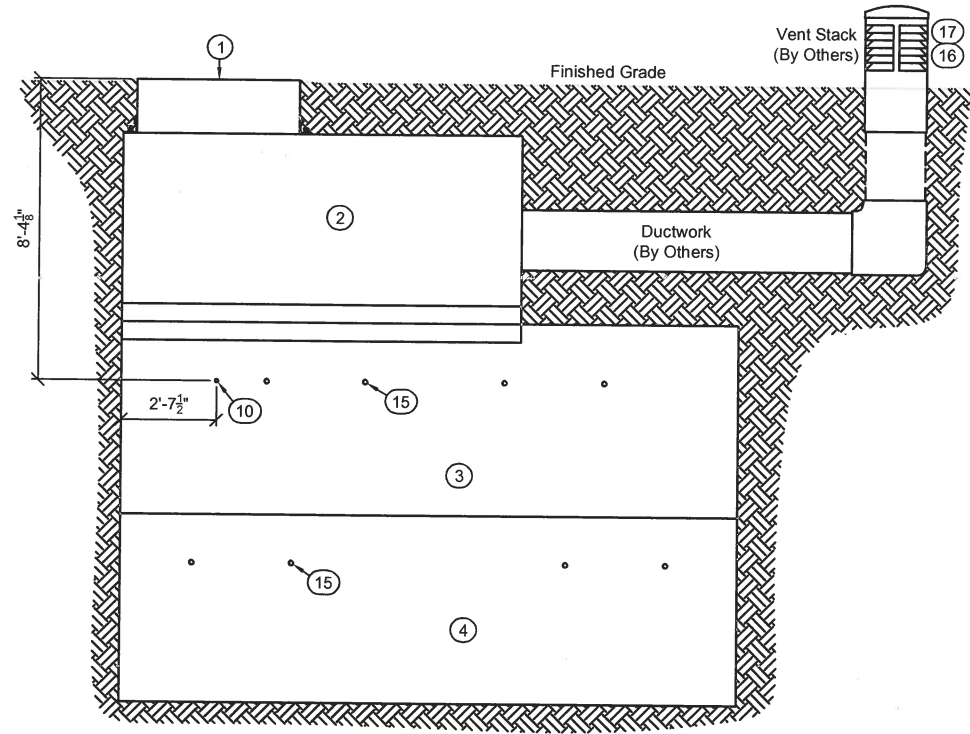
BY: _____ DATE: _____



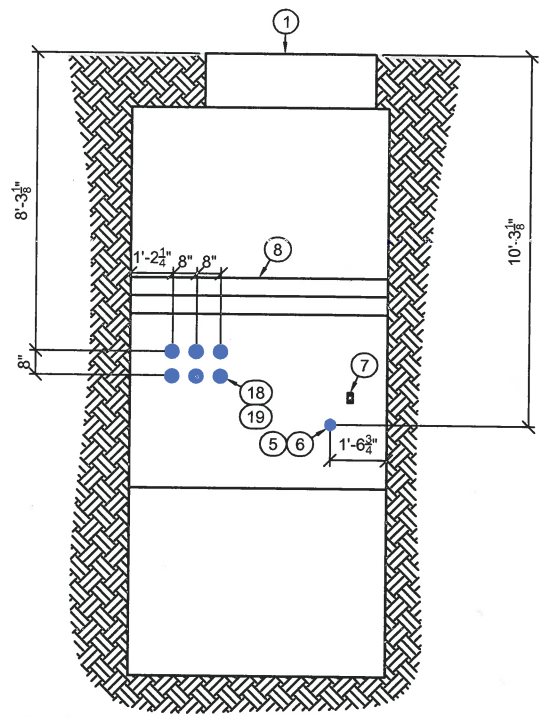
THIS DOCUMENT IS THE PROPERTY OF OLDCASTLE PRECAST, INC. IT IS CONFIDENTIAL, SUBMITTED FOR REFERENCE PURPOSES ONLY, AND SHALL NOT BE USED IN ANY WAY INJURIOUS TO THE INTERESTS OF, OR WITHOUT THE WRITTEN PERMISSION OF OLDCASTLE PRECAST, INC. COPYRIGHT ©2018 OLDCASTLE PRECAST, INC. ALL RIGHTS RESERVED.

CONTROLLED ENVIRONMENT MANHOLE
OVERHEAD VIEW (SUPER)
MODEL: CEMH616 (12JM-42-C)
RS0395 HARADA HERITAGE PARK

| | | | | |
|----------------------------|--------------|--------------|----------------|--|
| CUSTOMER BECHTEL | | | | |
| DATE 7/27/2018 | SALES RDW | DRAWN RDW | ENGINEER FS | CHECKED FS |
| DRAWING NUMBER CEMH616 | | | REVISION A | SALES ORDER 85627 SHEET 1B OF 9 |

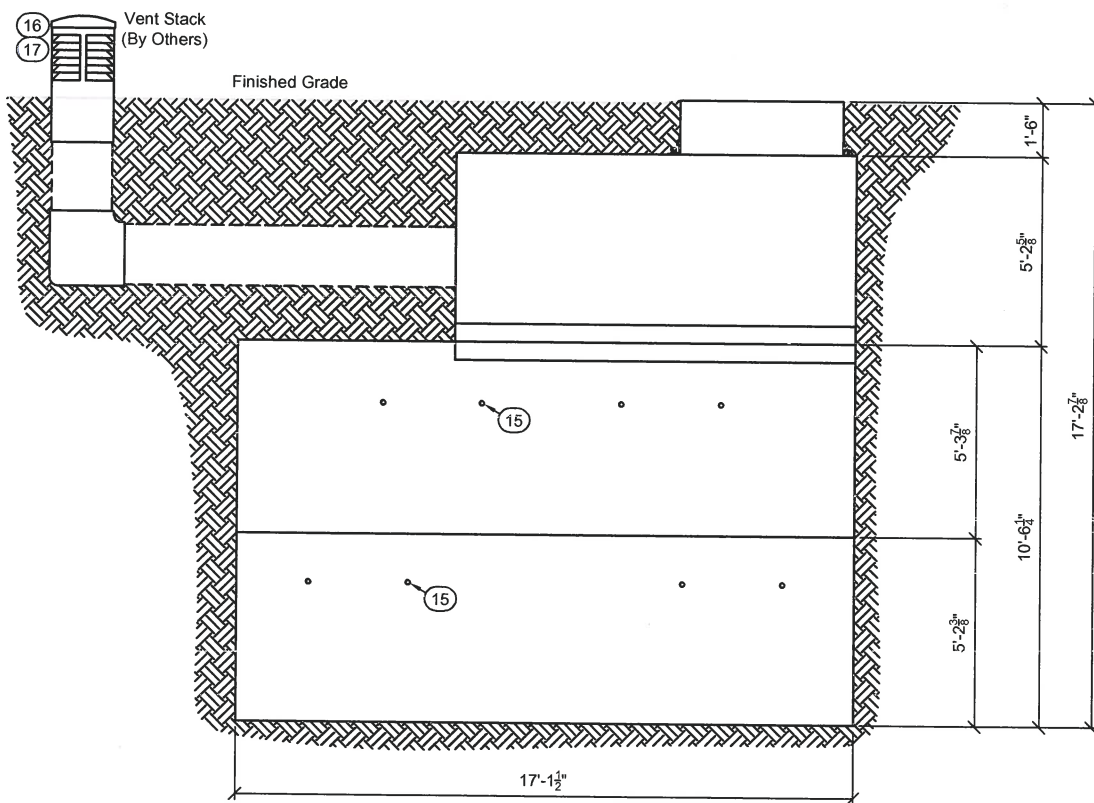


EXTERIOR ELEVATION VIEW "A"
SCALE: 3/16" = 1'-0"

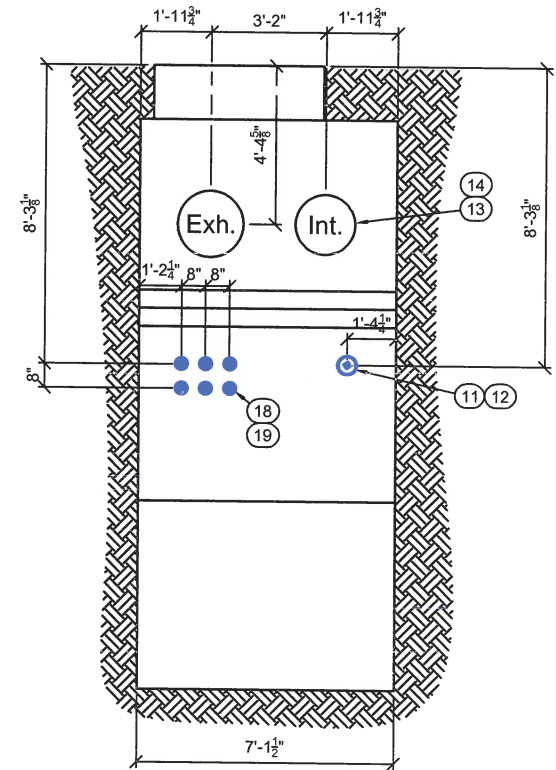


EXTERIOR ELEVATION VIEW "B"
SCALE: 3/16" = 1'-0"

| ITEM | QTY | NAME | NOTE |
|------|-----|-----------------------------------|---|
| 1 | 1 | CEMH 18" Tall Slabtop | |
| 2 | 1 | CEMH 610 Doghouse | |
| 3 | 1 | CEMH 616 Top | |
| 4 | 1 | CEMH 616 Base | |
| 5 | 1 | 3" Threaded Coupling Assembly | Electrical Entrance |
| 6 | 1 | 3" Threaded Plug | Apply Recto Seal |
| 7 | 1 | 2-Hole Copper Ground Plate | (Interior and Exterior) See Detail Sheet |
| 8 | 50 | 12" Joint Wrap | Wraps Around Doghouse Joint |
| 9 | 40 | Gasket 1.5" | Ship Loose |
| 10 | 1 | 1-1/4" Coupling Assembly | Sump Discharge |
| 11 | 1 | 6" Dia. Threaded Coupling | with Water Stop (DC Fan) |
| 12 | 1 | 6" Threaded Plug | Apply Recto Seal |
| 13 | 2 | Link Seal | Ship Loose |
| 14 | 2 | Foam Seal | Inlet & Outlet of HVAC Units |
| 15 | 16 | 1-1/2" Coil Insert | Lifting Inserts |
| 16 | 2 | Vent Stacks | Supplied & Installed by Others |
| 17 | 2 | Optional Vent Vaults | Provided by Oldcastle Installed by Others |
| 18 | 16 | 5" Int./4" Ext. Threaded Coupling | See Detail Sheet Coupling Detail |
| 19 | 12 | 4" Threaded Plug | Apply Recto Seal |



EXTERIOR ELEVATION VIEW "C"
SCALE: 3/16" = 1'-0"



EXTERIOR ELEVATION VIEW "D"
SCALE: 3/16" = 1'-0"

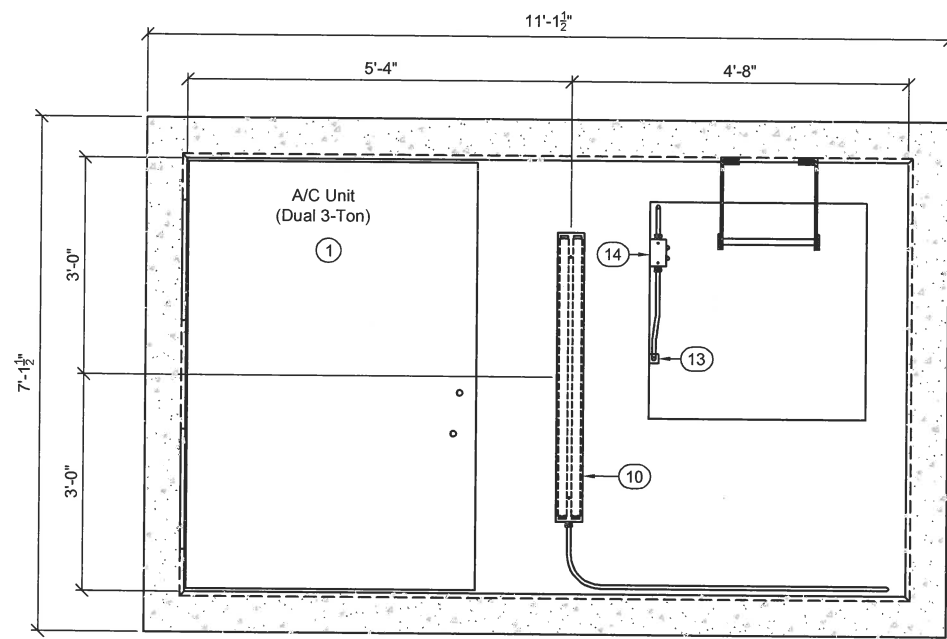
Oldcastle Precast
411 E. FRYE RD. CHANDLER, AZ 85225
PHONE: (480) 963-2678 FAX: (480) 969-1937

THIS DOCUMENT IS THE PROPERTY OF OLDCASTLE PRECAST, INC. IT IS CONFIDENTIAL, SUBMITTED FOR REFERENCE PURPOSES ONLY, AND SHALL NOT BE USED IN ANY WAY INJURIOUS TO THE INTERESTS OF, OR WITHOUT THE WRITTEN PERMISSION OF OLDCASTLE PRECAST, INC. COPYRIGHT ©2018 OLDCASTLE PRECAST, INC. ALL RIGHTS RESERVED.

CONTROLLED ENVIRONMENT MANHOLE
EXTERIOR ELEVATIONS (12) 4/5 TC
MODEL: CEMH616 (12JM-42-C)
RS0395 HARADA HERITAGE PARK

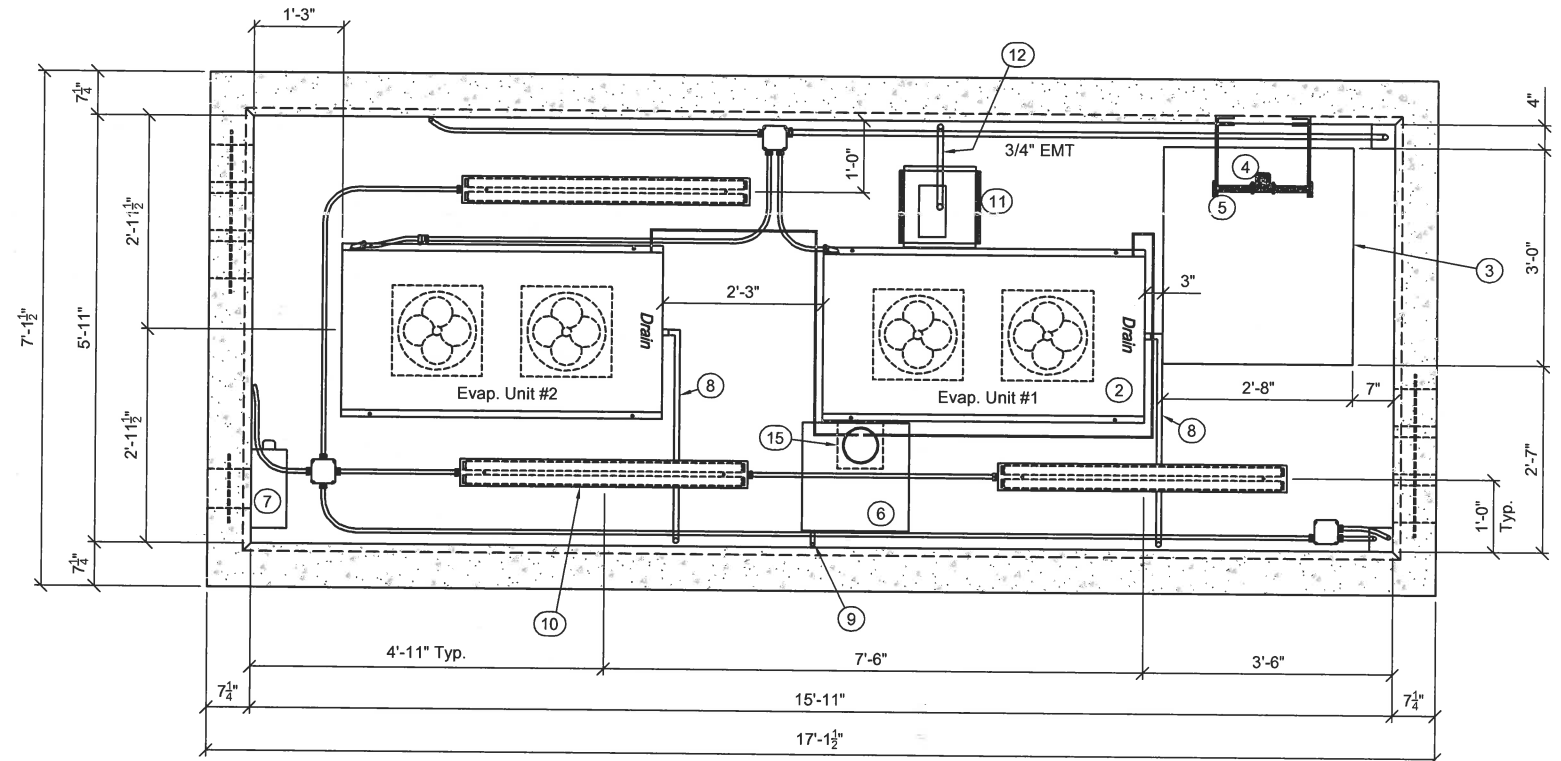
CUSTOMER
BECHTEL

| DATE | SALES | DRAWN | ENGINEER | CHECKED | SALES ORDER |
|-----------------|-------|-------|----------|----------|-------------|
| 7/27/2018 | | RDW | FS | | 85627 |
| DRAWINGS NUMBER | | | | REVISION | SHEET |
| CEMH616 | | | | A | 2C OF 9 |



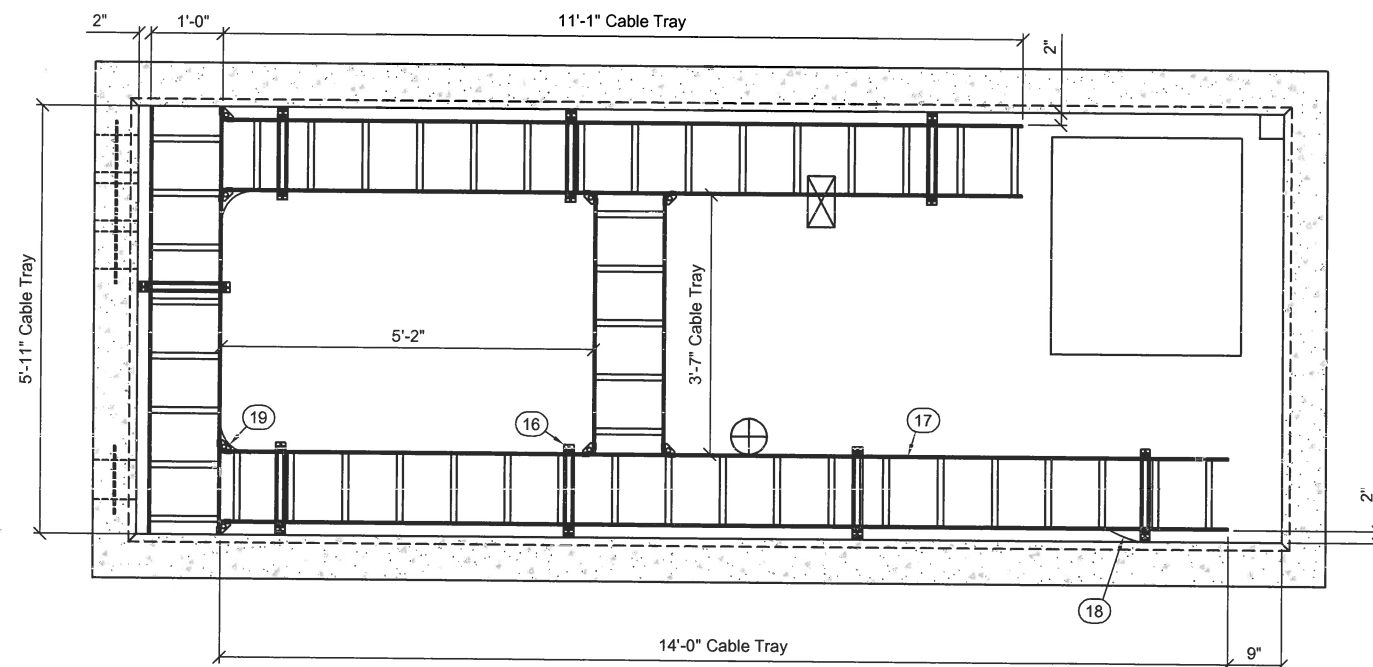
REFLECTED CEILING PLAN (DOGHOUSE)

SCALE: 3/8" = 1'-0"



REFLECTED CEILING PLAN (CEMH)

SCALE: 3/8" = 1'-0"



CABLE TRAY PLAN (CEMH)

SCALE: 3/8" = 1'-0"

| BILL OF MATERIALS - PARTS LIST | | | |
|--------------------------------|-----|------------------------------|---|
| ITEM | QTY | NAME | NOTE |
| 1 | 1 | A/C Unit | Dual 3-Ton |
| 2 | 2 | Evap. Unit | 2-Ton |
| 3 | 1 | Access Area | From Doghouse To CEMH |
| 4 | 1 | Pull Up Extension | Safety Post |
| 5 | 1 | Top Ladder 128" | Aluminum Stand-off Ladder (CEMH-128) |
| 6 | 1 | Drain Pan | 18" x 18" |
| 7 | 1 | DC Fan & Housing | 48VDC |
| 8 | 2 | EVAP Drain Assembly | See Detail Sheet |
| 9 | 1 | Drain Pan Assembly | See Drain Pain Detail |
| 10 | 4 | 4' Fluorescent Light Fixture | 120V, 48" 2 Lamp Strip Light (2 Rapid Start, 34 Watt, TB) w/ Wire Guard |
| 11 | 1 | Freshair Duct | Centered Over Blockout (See Detail Sheet) |
| 12 | 1 | Freshair Box Drain System | See Detail Sheet |
| 13 | 1 | Limit Switch | Top Roller |
| 14 | 1 | Access Light Assembly | Red & Green Lights (24V) |
| 15 | 1 | Flashing / Boot | See Detail Sheet |
| 16 | 8 | Cable Tray Bracket | Cable Tray Wall Support |
| 17 | 1 | 12" Cable Tray | Total 34'-7" Mounted @ 1'-11" From Ceiling To Top Of Tray |
| 18 | 1 | #2 Ground Wire | Insulated Stranded Copper Ground Wire (Tied To Ground Halo) |
| 19 | 2 | #2 Ground Wire | Insulated Stranded Copper Ground Wire |

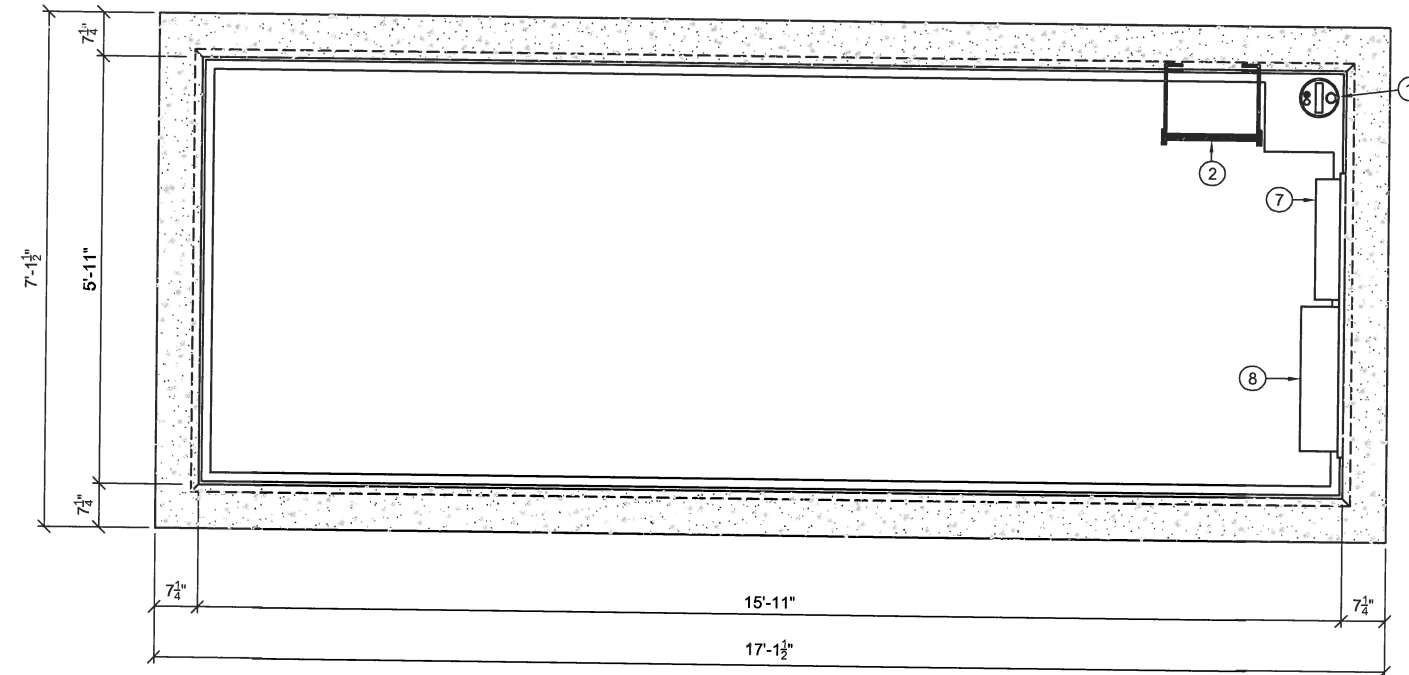


THIS DOCUMENT IS THE PROPERTY OF OLDCASTLE PRECAST, INC. IT IS CONFIDENTIAL, SUBMITTED FOR REFERENCE PURPOSES ONLY, AND SHALL NOT BE USED IN ANY WAY INJURIOUS TO THE INTERESTS OF, OR WITHOUT THE WRITTEN PERMISSION OF OLDCASTLE PRECAST, INC. COPYRIGHT ©2018 OLDCASTLE PRECAST, INC. ALL RIGHTS RESERVED

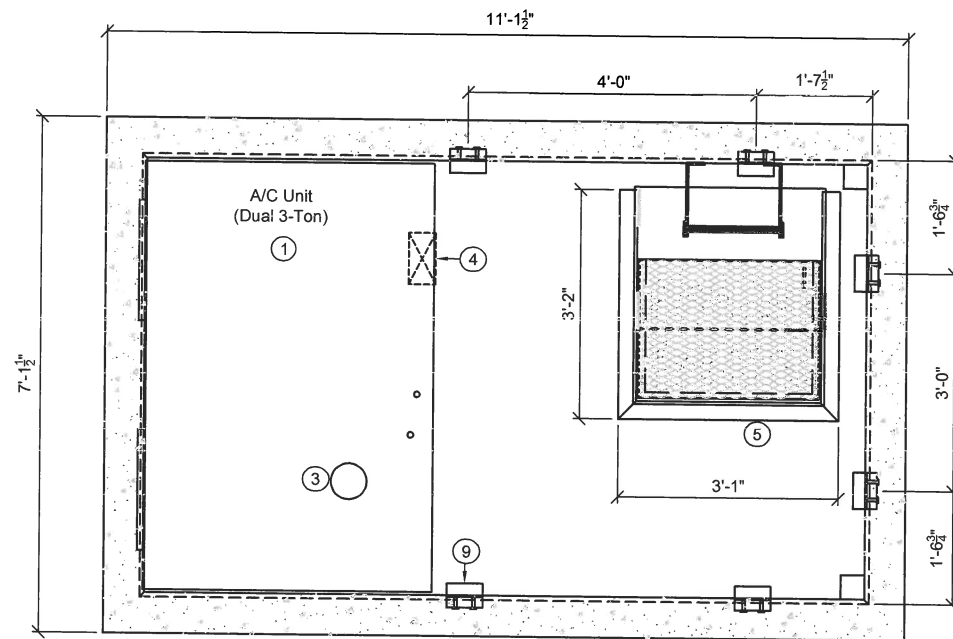
CONTROLLED ENVIRONMENT MANHOLE
 CEILING PLAN VIEWS
 MODEL: CEMH616 (12JM-42-C)
 RS0395 HARADA HERITAGE PARK

| | | | | |
|----------------------------|--------------|--------------|----------------|------------------------------|
| CUSTOMER BECHTEL | | | | |
| DATE 7/27/2018 | SALES RDW | DRAWN RDW | ENGINEER FS | CHECKED 85627 |
| DRAWING NUMBER CEMH616 | | | REVISION A | SALES ORDER SHEET 3A OF 9 |

| BILL OF MATERIALS - PARTS LIST | | | |
|--------------------------------|-----|---------------------------|---|
| ITEM | QTY | NAME | NOTE |
| 1 | 1 | A/C Unit | Dual 3-Ton |
| 2 | 1 | Base Ladder 46" | Aluminum Stand-off Ladder (CEMH-46) |
| 3 | 1 | 6" Dia. Blockout | Condenser Lines (6" Dia. Blockout) |
| 4 | 1 | Air Damper | 8.5" x 4.5" Blockout |
| 5 | 1 | Doghouse Grate | See Detail Sheet D3 "CEMH DOGHOUSE GRATE" |
| 6 | 1 | Sump Pit and Drain Trough | See Detail Sheet |
| 7 | 1 | Electrical Panel | 200A, 42 Space, 120/240V, Single Phase, 3 Wire (Siemens) |
| 8 | 1 | Control Panel Assembly | 2450-76 w/ Drip Shield |
| 9 | 6 | 4" x 6" x 1/4" Weld Plate | Cast in Vault Top and Doghouse (See Detail Sheet D1 "DOGHOUSE CONNECTION DETAIL") |
| 10 | 1 | Sump Pump | Optima 1/3 hp. 3MSI |



FLOOR PLAN (CEMH)
SCALE: 3/8" = 1'-0"



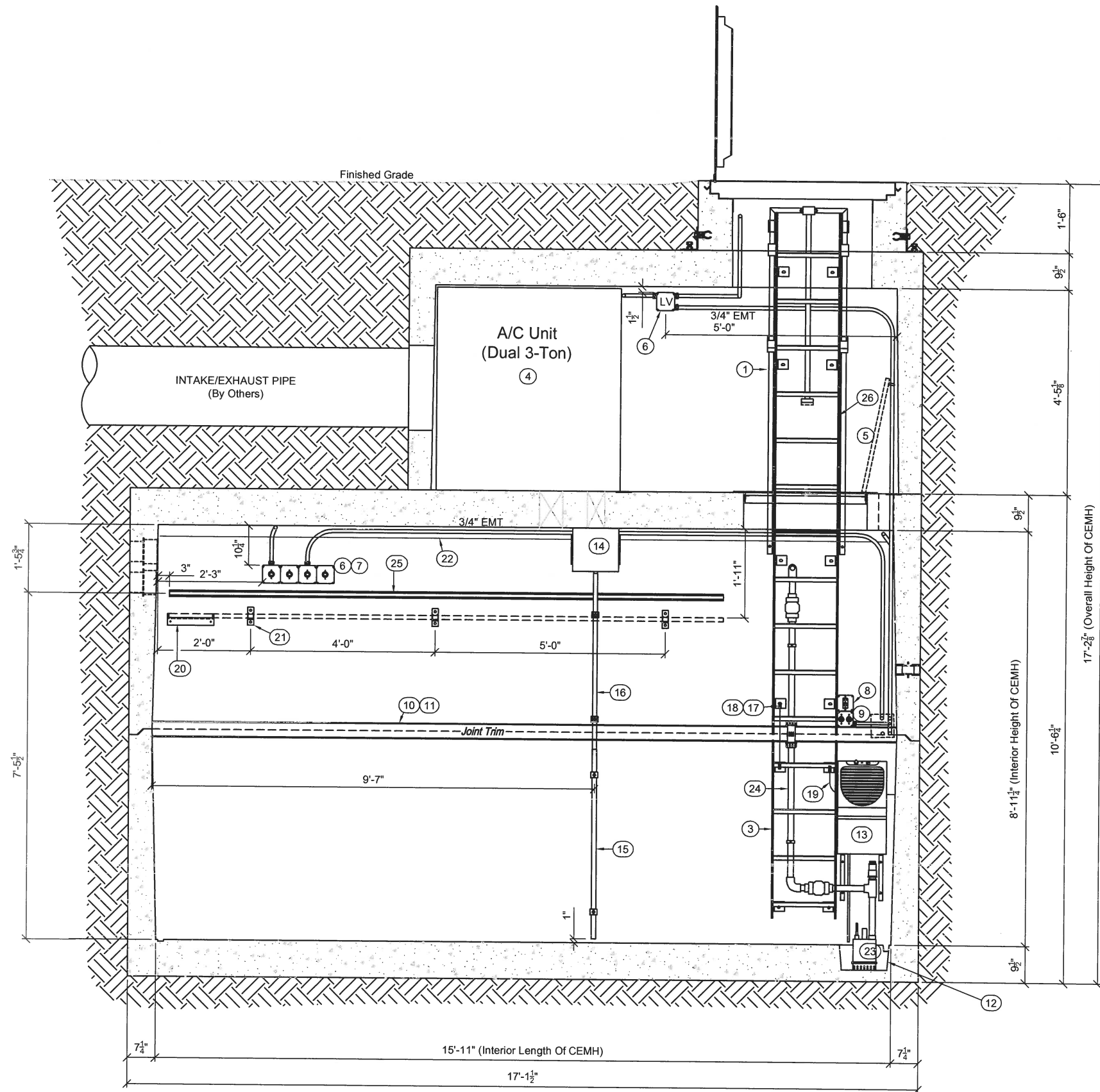
FLOOR PLAN (DOGHOUSE)
SCALE: 3/8" = 1'-0"



THIS DOCUMENT IS THE PROPERTY OF OLDCASTLE PRECAST, INC. IT IS CONFIDENTIAL, SUBMITTED FOR REFERENCE PURPOSES ONLY, AND SHALL NOT BE USED IN ANY WAY INJURIOUS TO THE INTERESTS OF, OR WITHOUT THE WRITTEN PERMISSION OF OLDCASTLE PRECAST, INC. COPYRIGHT ©2018 OLDCASTLE PRECAST, INC. ALL RIGHTS RESERVED

CONTROLLED ENVIRONMENT MANHOLE
FLOOR PLAN VIEWS (SINGLE SUMP)
MODEL: CEMH616 (12JM-42-C)
RS0395 HARADA HERITAGE PARK

| | | | | | |
|----------------------------|-------|--------------|----------------|---------------|----------------------|
| CUSTOMER BECHTEL | | | | | |
| DATE 7/27/2018 | SALES | DRAWN RDW | ENGINEER FS | CHECKED | SALES ORDER 85627 |
| DRAWING NUMBER CEMH616 | | | | REVISION A | SHEET 4A OF 9 |



| BILL OF MATERIALS - PARTS LIST | | | |
|--------------------------------|-----|---------------------------|---|
| ITEM | QTY | NAME | NOTE |
| 1 | 1 | Pull-Up Extension | CEMH-EXT |
| 3 | 1 | CEMH Base Ladder 46" | See Drawing: CEMH-46 |
| 4 | 1 | A/C Unit | Dual 3-Ton |
| 5 | 1 | CEMH Grate | Yellow |
| 6 | 5 | Junction Box | 4 11/16" Sq. |
| 7 | 4 | Rectifier Outlet | 30A/240V |
| 8 | 1 | GFI Outlet | 15A/125V |
| 9 | 2 | Twistlock Outlet | Sump Pump & Dehumidifier (15A/125V) |
| 10 | 1 | Wall Board | Top & Base |
| 11 | 1 | 4" Joint Trim | White (Ship Loose) |
| 12 | 1 | Sump Pit and Drain Trough | See Detail Sheet |
| 13 | 1 | Dehumidifier Unit | with Drain Hose & Mounting Brackets |
| 14 | 1 | Freshair Duct | Centered Over Blockout |
| 15 | 1 | 1.25" Sch. 40 PVC Pipe | 4'-1" Long (For Drain Tubes) with PVC Straps |
| 16 | 1 | Freshair Box Drain System | See Detail Sheet |
| 17 | 3 | Ground Lug | 1H/1 Cond. 1/0-14 Al |
| 18 | 1 | #2 Ground Wire | 20" Insulated Stranded Copper Ground Wire (Grounding Top & Base Ladders) |
| 19 | 1 | #2 Ground Wire | 30" Insulated Stranded Copper Ground Wire (To Ground Bar) |
| 20 | 1 | Cable Tray Bracket | Wall Angle |
| 21 | 3 | Cable Tray Bracket | Cable Tray Wall Support |
| 22 | 1 | Ground Halo | #2 Insulated Stranded Copper Wire (Installed on 6" Plastic Stand-Offs 16" O.C. & 3" From Ceiling) |
| 23 | 1 | Sump Pump | Optima 1/3 hp. 3MSI |
| 24 | 1 | Sump Pump Assembly | |
| 25 | 1 | Unistrut | 1 5/8" Deep by 15'-0" Long (Cast-in Concrete) |
| 26 | 2 | CEMH Top Ladder 128" | See Drawing: CEMH-128 |

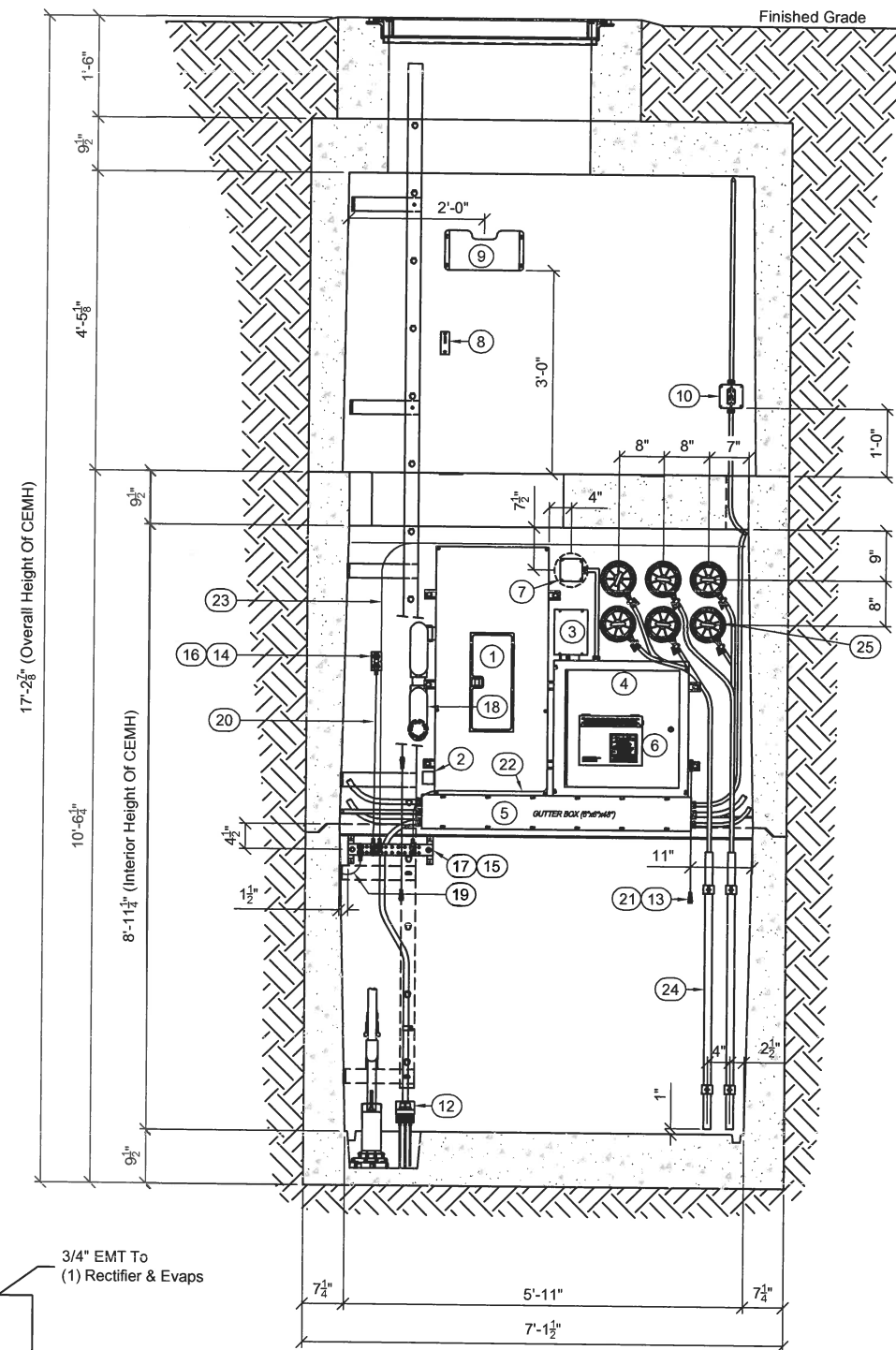
INTERIOR ELEVATION "A"
SCALE: 3/8" = 1'-0"



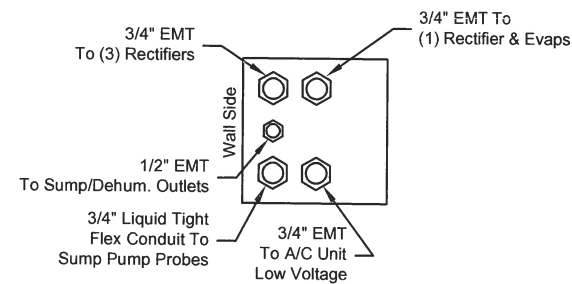
THIS DOCUMENT IS THE PROPERTY OF OLDCASTLE PRECAST, INC. IT IS CONFIDENTIAL, SUBMITTED FOR REFERENCE PURPOSES ONLY, AND SHALL NOT BE USED IN ANY WAY INJURIOUS TO THE INTERESTS OF, OR WITHOUT THE WRITTEN PERMISSION OF OLDCASTLE PRECAST, INC. COPYRIGHT ©2018 OLDCASTLE PRECAST, INC. ALL RIGHTS RESERVED.

CONTROLLED ENVIRONMENT MANHOLE
INTERIOR ELEVATION "A" (SINGLE SUMP)
MODEL: CEMH616 (12JM-42-C)
RS0395 HARADA HERITAGE PARK

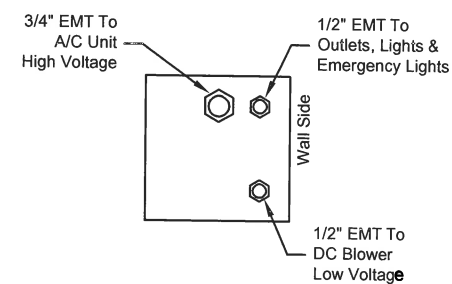
| | | | | | |
|----------------------------|-------|-------|----------|----------------------|------------------|
| CUSTOMER BECHTEL | | | | | |
| DATE | SALES | DRAWN | ENGINEER | CHECKED | SALES ORDER |
| 7/27/2018 | | RDW | FS | | 85627 |
| DRAWING NUMBER CEMH616 | | | | REVISION A | SHEET 5A OF 9 |



INTERIOR ELEVATION "B"
SCALE: 3/8" = 1'-0"



GUTTER BOX END DETAIL



GUTTER BOX END DETAIL

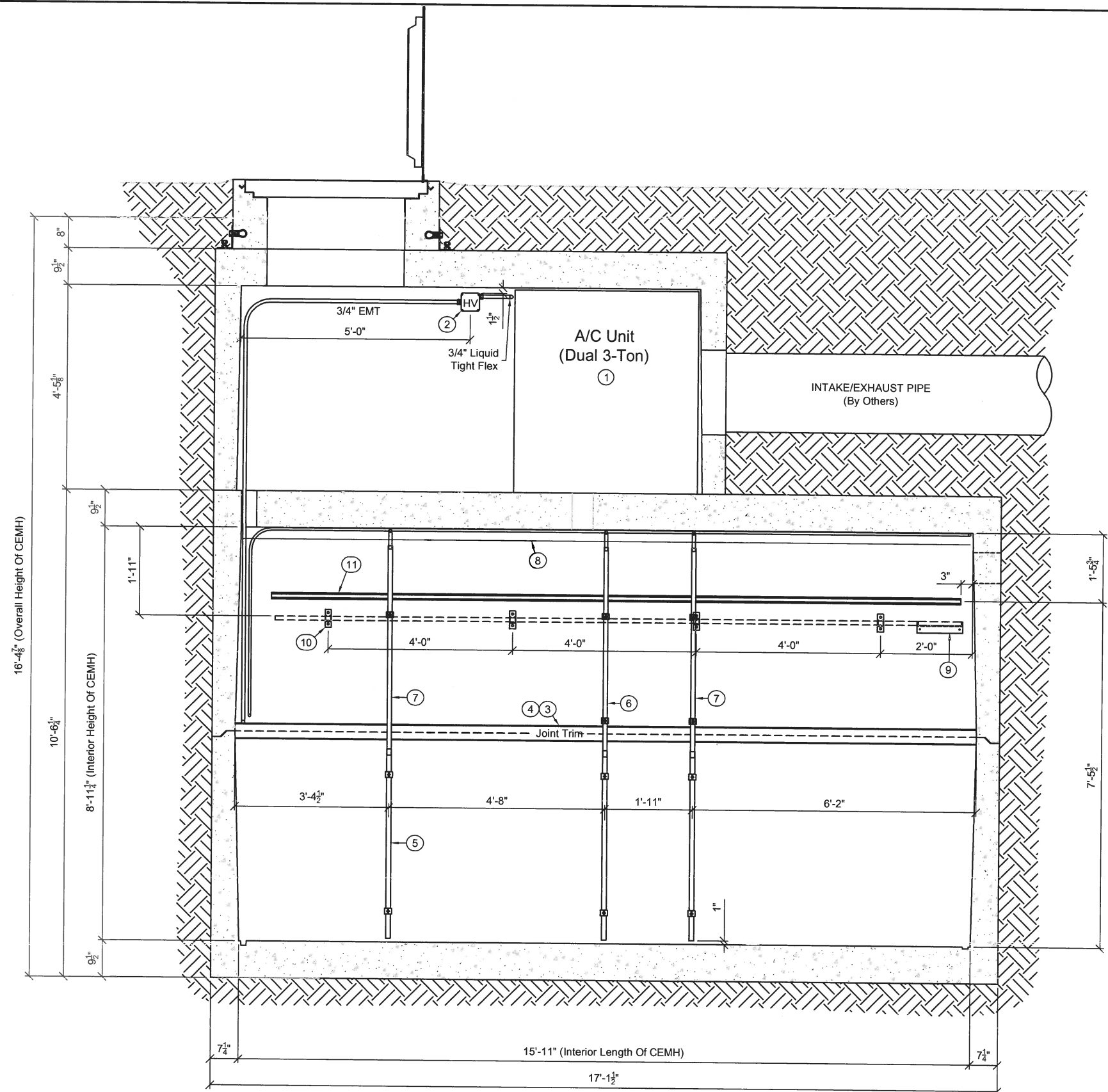
| BILL OF MATERIALS - PARTS LIST | | | |
|--------------------------------|-----|------------------------------|---|
| ITEM | QTY | NAME | NOTE |
| 1 | 1 | Electrical Panel | 200A, 42 Space, 120/240V, Single Phase, 3 Wire (Siemens) |
| 2 | 1 | Secondary Surge Suppressor | |
| 3 | 1 | Alarm Terminal Box | 6" x 6" x 8" |
| 4 | 1 | Control Panel | 2450-76 with Drip Shield |
| 5 | 1 | Gutter Box | 6" x 6" x 48" |
| 6 | 1 | Microprocessor | 2450-43-016 |
| 7 | 1 | Smoke Detector | (12VDC) with Audible Alarm (Photoelectric) |
| 8 | 1 | Grate Latch | |
| 9 | 1 | Document Holder | Color: Black, Letter Size |
| 10 | 1 | GFI Outlet | 15A/125V |
| 11 | 1 | Ground Halo | #2 Insulated Stranded Copper Wire (Installed on 6" Plastic Stand-Offs 16" O.C. & 3" From Ceiling) |
| 12 | 1 | Sump Sensor Assembly | See Detail Sheet |
| 13 | 4 | Ground Lug | 1H, Std. Barrel #2 |
| 14 | 1 | Ground Lug | 2H, Lng. Barrel |
| 15 | 4 | Ground Lug | 2H, Lng. Barrel, Lg. |
| 16 | 1 | 2-Hole Copper Ground Plate | (Interior and Exterior) See Detail Sheet |
| 17 | 1 | Copper Ground Bar | 2" x 15" x 1/4" with Stand-off Isolators (See Detail Sheet) |
| 18 | 1 | Electrical Entrance Assembly | See Detail Sheet |
| 19 | 1 | #2 Ground Wire | 30" Insulated Stranded Copper Ground Wire (To Base Ladder) |
| 20 | 1 | #2 Ground Wire | 36" Min. Insulated Stranded Copper Ground Wire (From Ground Plate to Ground Bar) |
| 21 | 2 | #2 Ground Wire | 24" Min. Insulated Stranded Copper Ground Wire (Grounding Top to Base) See Detail Sheet |
| 22 | 1 | #2 Ground Wire | 36" Min. Insulated Stranded Copper Ground Wire (From Panel Ground to Ground Bar) |
| 23 | 1 | #2 Ground Wire | Insulated Stranded Copper Ground Wire (Tied to Ground Halo) |
| 24 | 2 | 1.25" Sch. 40 PVC Pipe | 4'-1" Long (For Drain Tubes) with PVC Straps |
| 25 | 6 | 5" Drainable Jackoon Plugs | With Drain Tubes (Cut All Hoses @ 6'-0") |



THIS DOCUMENT IS THE PROPERTY OF OLDCASTLE PRECAST, INC. IT IS CONFIDENTIAL, SUBMITTED FOR REFERENCE PURPOSES ONLY, AND SHALL NOT BE USED IN ANY WAY INJURIOUS TO THE INTERESTS OF, OR WITHOUT THE WRITTEN PERMISSION OF OLDCASTLE PRECAST, INC. COPYRIGHT © 2018 OLDCASTLE PRECAST, INC. ALL RIGHTS RESERVED.

CONTROLLED ENVIRONMENT MANHOLE
INTERIOR ELEVATION "B" (6) 5" JM
MODEL: CEMH616 (12JM-42-C)
RS0385 HARADA HERITAGE PARK

| | | | | | |
|----------------------------|-------|-------|----------|----------------------|------------------|
| CUSTOMER BECHTEL | | | | | |
| DATE | SALES | DRAWN | ENGINEER | CHECKED | SALES ORDER |
| 7/27/2018 | | RDW | FS | | 85627 |
| DRAWING NUMBER CEMH616 | | | | REVISION A | SHEET 6B OF 9 |



| BILL OF MATERIALS - PARTS LIST | | | |
|--------------------------------|-----|------------------------|---|
| ITEM | QTY | NAME | NOTE |
| 1 | 1 | A/C Unit | Dual 3-Ton |
| 2 | 1 | Junction Box | 4 11/16" Sq. |
| 3 | 1 | Wall Board | Top & Base |
| 4 | 1 | 4" Joint Trim | White (Ship Loose) |
| 5 | 3 | 1.25" Sch. 40 PVC Pipe | 4'-1" Long (For Drain Tubes) with PVC Straps |
| 6 | 1 | Drain Pan Assembly | See Drain Pan Detail |
| 7 | 2 | EVAP Drain Assembly | See Detail Sheet |
| 8 | 1 | Ground Halo | #2 Insulated Stranded Copper Wire (Installed on 6" Plastic Stand-Offs 16" O.C. & 3" From Ceiling) |
| 9 | 1 | Cable Tray Bracket | Wall Angle |
| 10 | 4 | Cable Tray Bracket | Cable Tray Wall Support |
| 11 | 1 | Unistrut | 1 5/8" Deep by 15'-0" Long (Cast-In Concrete) |

INTERIOR ELEVATION "C"
SCALE: 3/8" = 1'-0"

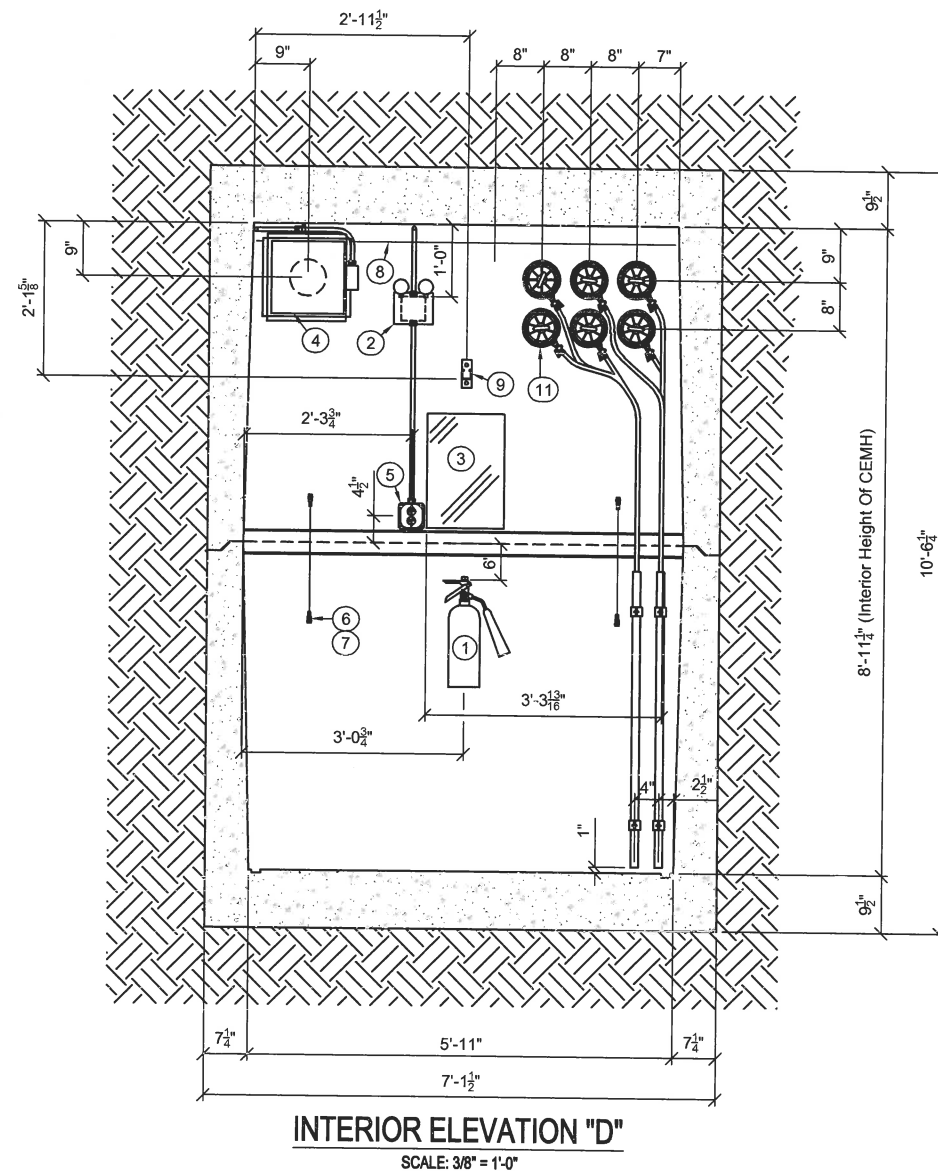


THIS DOCUMENT IS THE PROPERTY OF OLDCASTLE PRECAST, INC. IT IS CONFIDENTIAL, SUBMITTED FOR REFERENCE PURPOSES ONLY, AND SHALL NOT BE USED IN ANY WAY INJURIOUS TO THE INTERESTS OF, OR WITHOUT THE WRITTEN PERMISSION OF OLDCASTLE PRECAST, INC. COPYRIGHT ©2018 OLDCASTLE PRECAST, INC. ALL RIGHTS RESERVED.

CONTROLLED ENVIRONMENT MANHOLE
INTERIOR ELEVATION "C"
MODEL: CEMH616 (12JM-42-C)
RS0395 HARADA HERITAGE PARK

| CUSTOMER | | | | | |
|----------------|-------|-------|----------|----------|-------------|
| BECHTEL | | | | | |
| DATE | SALES | DRAWN | ENGINEER | CHECKED | SALES ORDER |
| 7/27/2018 | | RDW | FS | | 85627 |
| DRAWING NUMBER | | | | REVISION | SHEET |
| CEMH616 | | | | A | 7A OF 9 |

| BILL OF MATERIALS - PARTS LIST | | | |
|--------------------------------|-----|-----------------------------|---|
| ITEM | QTY | NAME | NOTE |
| 1 | 1 | Halotron Fire Extinguisher | 11lb. Capacity (Ship Loose) Install Hook ● Plant |
| 2 | 1 | Emergency Light | 6W/6V, Incan |
| 3 | 1 | Telco Board | (13" x 19") 3/4" FRP |
| 4 | 1 | DC Fan & Housing | 48VDC |
| 5 | 1 | Duplex Outlet | 15A/125V |
| 6 | 4 | Ground Lug | 1H, Std. Barrel #2 |
| 7 | 1 | #2 Ground Wire | 24" Min. Insulated Stranded Copper Ground Wire (Grounding Top to Base) See Detail Sheet |
| 8 | 1 | Ground Halo | #2 Insulated Stranded Copper Wire (Installed on 6" Plastic Stand-Offs 16" O.C. & 3" From Ceiling) |
| 9 | 1 | Cable Tray Bracket | Cable Tray Wall Support |
| 10 | 2 | 1.25" Sch. 40 PVC Pipe | 4'-1" Long (For Drain Tubes) with PVC Straps |
| 11 | 6 | 5" Drainable Jackmoon Plugs | With Drain Tubes (Cut All Hoses ● 6'-0") |
| 12 | 1 | Cable Tray Bracket | Cable Tray Wall Support |



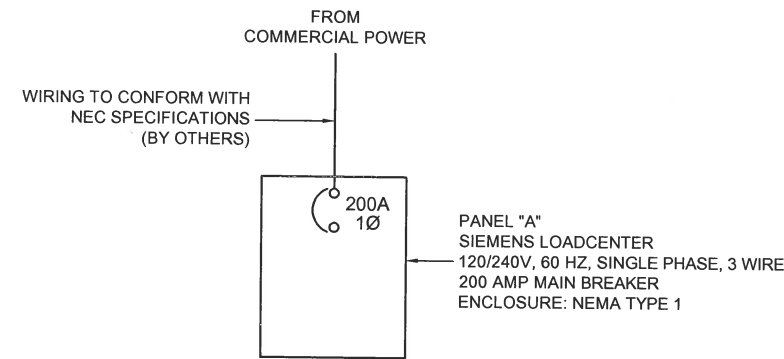
THIS DOCUMENT IS THE PROPERTY OF OLDCASTLE PRECAST, INC. IT IS CONFIDENTIAL, SUBMITTED FOR REFERENCE PURPOSES ONLY, AND SHALL NOT BE USED IN ANY WAY INJURIOUS TO THE INTERESTS OF, OR WITHOUT THE WRITTEN PERMISSION OF OLDCASTLE PRECAST, INC. COPYRIGHT ©2018 OLDCASTLE PRECAST, INC. ALL RIGHTS RESERVED

CONTROLLED ENVIRONMENT MANHOLE
 INTERIOR ELEVATION "D" (6) 5"
 MODEL: CEMH616 (12JM-42-C)
 RS0395 HARADA HERITAGE PARK

| | | | | | |
|----------------------------|-------|-------|----------|---------------|------------------|
| CUSTOMER BECHTEL | | | | | |
| DATE | BALES | DRAWN | ENGINEER | CHECKED | SALES ORDER |
| 7/27/2018 | | RDW | FS | | 85627 |
| DRAWING NUMBER CEMH616 | | | | REVISION A | SHEET 8C OF 9 |

ELECTRICAL PANEL SCHEDULE

| PANEL: A | | LOCATION: INTERIOR ELEVATION 'B' | | | | MAINS: 200A | |
|-------------------|---------------------|----------------------------------|---------------|-------|-------|---------------------------|----------------------|
| ENCLOSURE: NEMA-1 | | FED FROM: UTILITY | | | | VOLTAGE: 120/240V, 1Ø, 3W | |
| MOUNTING: SURFACE | | WITHSTAND: 42,000 A.I.C. | | | | | |
| CKT # | | VA | BRKR | PHASE | BRKR | VA | CKT # |
| 1 | DEHUMIDIFIER OUTLET | 600 | 15/1 | A | 15/1 | 320 | CEILING LIGHTS * |
| 3 | SUMP PUMP OUTLET | 720 | 15/1 | B | 15/1 | 12 | EMERGENCY LIGHT |
| 5 | CONTROLLER | 120 | 20/2 | A | 15/1 | 360 | DUPLEX / GFI OUTLETS |
| 7 | | 120 | | B | 15/1 | | SPARE |
| 9 | HVAC UNIT #1 | 2200 | 40/2 | A | 40/2 | 2200 | HVAC UNIT #2 |
| 11 | | 2200 | | B | | 2200 | |
| 13 | RECTIFIER #1 ** | 1875 | 30/2 | A | 30/2 | 1875 | RECTIFIER #2 ** |
| 15 | | 1875 | | B | | 1875 | |
| 17 | RECTIFIER #3 ** | 1875 | 30/2 | A | 30/2 | 1875 | RECTIFIER #4 ** |
| 19 | | 1875 | | B | | 1875 | |
| 21 | SPARE | | 30/2 | A | 30/2 | | SPARE |
| 23 | | | | B | | | |
| 25 | SPACE | | | A | | | SPACE |
| 27 | SPACE | | | B | | | SPACE |
| 29 | SPACE | | | A | | | SPACE |
| 31 | SPACE | | | B | | | SPACE |
| 33 | SPACE | | | A | | | SPACE |
| 35 | SPACE | | | B | | | SPACE |
| 37 | SPACE | | | A | 20/2 | | SPACE |
| 39 | SURGE SUPPRESSOR | | 20/2 | B | 15/1 | 264 | EVAP UNIT #1 |
| 41 | | | | A | 15/1 | 264 | EVAP UNIT #2 |
| | | KVA | PHASE TOTALS: | | VA | AMPS | |
| TOTAL CONNECTED: | | 13.564 | A-N | | 13564 | 113.0 | |
| | | 13.016 | B-N | | 13016 | 108.5 | |



ONE LINE DIAGRAM

* LOAD x 1.25 FOR CONTINUOUS
 ** RECTIFIER LOADS CALCULATED @ 5 AMPS

AIR CONDITIONER (Collins)

| LOADS | 230V - 1 PHASE |
|------------------------------|------------------|
| COMPRESSOR (RATED LOAD AMPS) | 20.7 |
| FAN MOTOR - AMPS | - |
| BLOWER MOTOR - AMPS | - |
| TOTAL AMPS | 23.1/23.4 |

EVAP. BLOWER MOTOR - AMPS 2.2

AIR CONDITIONER SPECIFICATIONS

| | | |
|------------------------|------------------------------|-------------------------------------|
| Compressors: (Qty.: 2) | Evaporative Units: (Qty.: 2) | Evaporative Blower Motor: (Qty.: 2) |
| Manufacturer: Copeland | Manufacturer: Heatcraft | Manufacturer: Heatcraft |
| Model: ZR40K3-PFV-930 | Model: SM102BE | Model: 5036TS |
| Type: Scroll | V: 230 | V: 208-230 |
| V: 208-230 | Ph: 1 | Ph: 1 |
| Ph: 1 | Hz: 60 | Hz: 60 |
| Hz: 60 | | HP: 1/15 |

Color Code Connectors:

- Phase A: Black
- Phase B: Red
- Phase C: Blue (If Applicable)
- Neutral: White
- Ground: Green

NOTES:

- 1.) All Wiring is THHN Copper Stranded Wire Unless Otherwise Noted.
- 2.) All Breakers Excluding Main Breaker are Plug-on Circuit Breakers.
- 3.) All grounding To Conform With NEC Specifications.
- 4.) All conductor sizing To Conform With NEC Specifications.



THIS DOCUMENT IS THE PROPERTY OF OLDCASTLE PRECAST, INC. IT IS CONFIDENTIAL, SUBMITTED FOR REFERENCE PURPOSES ONLY, AND SHALL NOT BE USED IN ANY WAY INJURIOUS TO THE INTERESTS OF, OR WITHOUT THE WRITTEN PERMISSION OF OLDCASTLE PRECAST, INC. COPYRIGHT ©2018 OLDCASTLE PRECAST, INC. ALL RIGHTS RESERVED

CONTROLLED ENVIRONMENT MANHOLE
 ELECTRICAL PANEL & ONE LINE DIAGRAM
 MODEL: CEMH616 (12JM-42-C)
 RS0395 HARADA HERITAGE PARK

| | | | | | |
|----------------------------|-------|-------|----------|----------|-------------|
| CUSTOMER BECHTEL | | | | | |
| DATE | SALES | DRAWN | ENGINEER | CHECKED | SALES ORDER |
| 7/27/2018 | | RDW | FS | | 85627 |
| DRAWING NUMBER | | | | REVISION | SHEET |
| CEMH616 | | | | A | 9A OF 9 |