

## Plant Risk Assessment



<b>Inspector:</b>	Jim Ranten
<b>Client Name:</b>	Charles Nipper
<b>Client:</b>	Focus Machinery
<b>Address:</b>	908-920 Mountain Highway
<b>Suburb:</b>	Bayswater VIC
<b>Plant Type:</b>	Roller
<b>Make:</b>	Wacker Neuson RD12A
<b>Serial Number:</b>	WNCRD12ALPUM04525
<b>Hour Meter:</b>	0000
<b>Modified From Original Condition?:</b>	No
<b>Plant Number:</b>	R277
<b>License Required:</b>	No
<b>dB Rating operating cabin:</b>	
<b>dB Rating from 3mtrs: 102</b>	<b>Machine Weight: 1139kg</b>



**Report Number:** #003604  
**Inspection Date:** May 21st, 2024  
**Expiry Date:** May 21st, 2025

**Travel Height:** 2350mm

**Max Height:** 2350mm

## Preface

This Hazard/Risk assessment report has been prepared as the requested of the client in fulfilment of duty of care to provide a safe and functional piece of mobile plant. This only has a validity of twelve (12) months from the date of the report.

**Compliance:** Compliance has been determined using the below where deemed appropriate:

- Worksafe Compliance Code – Plant
- OH&S Regulations 2017
- OHS Act 2004
- AS4024-2014 Safety of Machinery

The report is based on the visual observations of the inspector on the day of inspection and did not include observation of equipment in operation. While the inspector takes reasonable care to be thorough, under the conditions of this inspection it is not possible to ensure that every hazard has been observed or reported. Since vandalism, disassembly, normal wear and tear and operational use are ongoing risks to safety. The operator must carry out Job Safety Analysis, Pre-Start Checks, and adhere to the operator's manual as outlined in the manufacturer's documentation.

The relative urgency of rectification is indicated by the score as detailed in the Analysis Matrix table. Please do not hesitate to contact JR Safety and Compliance Pty Ltd if further clarification is required.

## Analysis Matrix

Likelihood	Consequence					
		Insignificant	Minor	Moderate	Major	Catastrophic
Almost Certain		Medium	High	Very High	Very High	Very High
Likely		Medium	High	High	Very High	Very High
Sometimes		Low	Medium	High	High	Very High
Rarely		Low	Low	Medium	Medium	High
Highly Unlikely		Low	Low	Low	Medium	Medium

## Risk Evaluation

- **Catastrophic** – Fatality – Act immediately to mitigate the risk.
- **Major** – Extensive injuries – Act immediately to mitigate the risk. If the correct treatments are not available immediately establish interim risk reduction strategies.
- **Moderate** – Medical Treatment required – Take reasonable steps to mitigate the risk and implement the risk treatments as soon as reasonably practicable.
- **Minor** – First Aid Treatment – Implement the risk treatments as soon as reasonably practicable.
- **Insignificant** – No risk of injury but as always take caution and reasonable steps to monitor risk.

## Hierarchy of Controls

- **Elimination** – This is a permanent solution and should be attempted in the first place.
- **Substitution** – This includes plant which present a lower level of risk.
- **Isolation** – Isolate the Hazard, use guarding or prevent access etc.
- **Engineering** – Safe alternative manufacturing guarding or barriers.
- **Administration** – Implement Policies, Procedures, Training and safe work practices.
- **PPE** – Ensure that individuals are equipped with the proper personal protective equipment to perform the task. (Glasses, Gloves, Protective Foot ware, Hard Hats, Wide Brimmed Hats, Sunscreen, Ear Protection etc).

## Hazard Checklist

### Entanglement

Can anyone's hair, clothing gloves, necktie, jewellery, rags, or other material become entangled with the moving parts of the plant.

Issue	Status	Comments/Issues	Risk Rating
Guards Installed for Engine fan.	Yes		Low
Guards installed for belts & pulleys.	Yes		Low
Engine covers fitted.	Yes		Low
Warning Decals - (Do not open with engine running).	Yes		Medium
Warning Deals for Personal (i.e. clothing, hair etc).	Yes		Medium
Secure Work Zone.		Responsibility of operator to ensure adequate exclusion zone when machine is in operation.	
Rotating Parts Decal Fitted	Yes		Medium
Engine Bay enclosed with limited access.	Yes		Medium
Battery Isolator lockable	Yes		Low
External emergency stop fitted and accessed at ground level.	Yes	Complies to AS4024. 1604-2019.	Low

### Crushing

Can a person be crushed due to Material falling off the plant, Uncontrolled or unexpected movement of the plant or its load, the plant tipping or rolling over, parts of the plant Collapsing, coming in contact with moving parts of the plant during testing, inspection, maintenance, cleaning or repair, being thrown off or under the plant, being trapped between the plant and materials or fixed structures and any other factors?

Issue	Status	Comments/Issues	Risk Rating
Neutral Start Switch (Forward/Reverse Lever).	Yes		Low
Reversing/Travel Alarm (above 87dBa @ 1mtr).	Yes	Squawker or beeper?	Low
Amber Flashing Beacon (Visible position - from 200m - 360 degrees).	Yes		Low
Controls have the appropriate knobs.	Yes		Low
Machine may suddenly reverse decal.	Yes		Medium
Rear view mirror (Mirrors to be adjusted to reduce blind spots).	Yes		Low
Emergency Exit Identified.	Yes		Low

Issue	Status	Comments/Issues	Risk Rating
Service Brake Operational.	Yes		Low
Battery Isolator.	Yes		Low
Hydrostatic Drive (Emergency Stop).	Yes		Low
Slope Indicator Fitted - (Ref to SWIMS).		Operator to ensure safe limits are not exceeded as per manufacturers guidelines.	
Seat belt fitted.	Yes	Fitted seatbelt is in good condition, Conforms to ISO6683. And does not require replacement as per manufacturers requirements.	Low
Seat Belt must be worn decal.	Yes		Low
Door Fitted.	N/A		
No phone use while operating the machine decal fitted.	Yes		Medium
Ensure that all operators follow approved SWMS/SOP when loading and unloading this machine to and from a flat top truck or trailer, low loader or tilt tray.		Responsibility of operator/owner	
Emergency Stops (If fitted)	Yes	Conforms to AS 4024. 1604:2019	Low
Safety Bar/ROPS fitted & Decal	Yes		Low
Iso Certified Rops Structure fitted.	Yes	Conforms to ISO 3471:	Low
No Passenger Decal Fitted	Yes		Low
External Emergency Stop fitted and clearly marked.	Yes	Conforms to AS 4024. 1604:2019	Low
Correct Retaining Pins fitted (No bolts, Steel Rods, Wire to be used as retaining pins).	Yes	Articulation lock pin must be available and to be installed during transport and maintenance of the machine.	Low
Work Area to be barricaded during operation with appropriate exclusion zone.		Responsibility of operator to ensure adequate exclusion zone when machine is in operation.	
<b>Cutting, Stabbing and Puncturing</b> Can anyone be cut, stabbed or punctured due to: Coming in contact with sharp or flying objects, with moving parts of the plant during testing, inspection, operation, maintenance, cleaning or repair of the plant? Parts of the plant or work pieces disintegrating? Work pieces being ejected? The mobility of the plant? Uncontrolled or un expected movement of the plant?			
Issue	Status	Comments/Issues	Risk Rating
Guarding.	Yes		Medium

Issue	Status	Comments/Issues	Risk Rating
Trained person only.		Operator to be trained competent in use of machine.	
Tag out procedures in place.		Responsibility of operator/owner.	
Travel Alarm and Rotating Beacon fitted.	Yes		Low
Work Area to be barricaded during operation with appropriate exclusion zone.		Responsibility of operator.	
Eye protection to be worn when performing maintenance or prestart activities.		Responsibility of operator/owner.	
Rotating Part Decal fitted.	Yes		Medium
Horn Fitted to alert bystanders.	Yes		Low
Daily Inspections of Hoses/Pumps/Valves to check for any leaks or damage etc and tag out if so.		Responsibility of operator.	

#### Shearing

Can anyone's body parts be cut off between two parts of the plant, or between a part of the plant and a work piece or structure?  
 In addition to the controls mentioned above under crushing, striking, cutting and stabbing

Issue	Status	Comments/Issues	Risk Rating
Decals - Crush Zone.	Yes		Medium
Warning Sign.	Yes		Medium
Shearing Guarding.	Yes		Medium

#### Friction

Can anyone be burnt due to contact with moving parts or surfaces of the plant, or material handled by the plant

Issue	Status	Comments/Issues	Risk Rating
Safe Work Procedures in place.		Responsibility of operator/owner.	
Guards.	Yes		Medium
PPE (Eye and Hand Protection to be worn when performing maintenance or prestart activities).		Responsibility of operator/owner.	

#### Striking

Can anyone be struck by moving parts due to working pieces being ejected:

Issue	Status	Comments/Issues	Risk Rating
Keep Clear Warning Decal.	Yes		Medium

Issue	Status	Comments/Issues	Risk Rating
Engine Fan Guard.	Yes		Low
Belts & pulley guards.	Yes		Low
Correct retaining pins.	Yes	Articulation lock pin must be available and to be installed during transport and maintenance of the machine.	Low
Reversing or travel alarm.	Yes		Low
Amber flashing beacon.	Yes		Low
Reversing Decal fitted.	Yes		Medium
Front and or Rear work lights.	Yes		Low
Reflective side tape fitted.	Yes	Yellow/White Class 1 reflective tape fitted.	Low
Warning Horn	Yes		Low
Work Area located and barricades in place to prevent access into operating area or exclusion zone.		Responsibility of operator.	

#### High Pressure Fluid

Can anyone come into contact with fluids under high pressure, due to plant failure or misuse of the plant?

Issue	Status	Comments/Issues	Risk Rating
All hose clamps fitted.	Yes		Low
High Pressure Warning decals.	Yes		Medium
Non return valves fitted.	Yes		Low
All pipes clamped	Yes		Low
High Pressure Fluid Decal	Yes		Medium
Battery Explosion warning decal fitted.	Yes		Low
Pressure Release Radiator Cap fitted.		Radiator expansion tank fitted preventing the need to opening the system in order to check fluid levels.	
Sheathing fitted to hoses to prevent rubbing and failure.	Yes		Low
Lockable Battery Isolator fitted - so machine can be locked out before any maintenance activities are undertaken.	Yes	Red lockable battery isolator fitted.	Low
Relieve any pressure from system before undertaking any maintenance activities and follow manufactures procedures.		Responsibility of operator/owner	



### Electrical

Can anyone be injured by electrical shock or burnt due to:  
 The plant contacting live electrical?  
 The plant working to close proximity to electrical conductors?  
 Overload of electrical circuits?  
 Damage or poorly maintained electrical cables?  
 Damage to electrical components?  
 Lack of Isolation procedures?

Issue	Status	Comments/Issues	Risk Rating
<b>Overhead Electrical Hazard / obstructions decal fitted.</b>	Yes	All overhead services to be identified prior to operation.	Medium
<b>Isolation Switches in good condition.</b>	Yes	All circuits are protected with appropriate circuit breakers/fuses.	Low
<b>Look up and Live Decal fitted.</b>	Yes		Medium
<b>Battery Constrained to prevent displacement.</b>	Yes		Low
<b>Battery Isolator lockable</b>	Yes		Low
<b>Any damage to electrical wires?</b>	No		Low
<b>Travel Height of Machine decal</b>	Yes		Low
<b>Electrical Spotter to be used if working within close proximity of electrical wires.</b>		Responsibility of operator.	
<b>Rubber Matting or rubber boots covering the battery terminals to prevent contact with live terminals.</b>	Yes		Low

### Explosion

Can any one be injured by explosion of gases, vapours, liquids, dusts or other substances, triggered by the operation of the plant or by material handled by the plant?

Issue	Status	Comments/Issues	Risk Rating
<b>Fuel Decal.</b>	Yes		Medium
<b>Hydraulic Oil Decal.</b>	Yes		Medium

### Slipping Tripping and Falling

Using the plant or being in the vicinity of the plan, slip, trip or fall due to the working environment or other factors? E.g. Poor Housekeeping, slippery or uneven work surface or lack of guardrails.

Issue	Status	Comments/Issues	Risk Rating
<b>Machinery tracks or steps are clean (Clear of mud).</b>		Fitted steps are of a non-slip design. Responsibility of operator to ensure steps are clean.	
<b>Adequate Steps/footings in place.</b>	Yes		Low

Issue	Status	Comments/Issues	Risk Rating
<b>Adequate guardrails/handrails/grab rails in place.</b>	Yes	Ensure 3 points of contact is able to be maintained during access and egress from machine.	Low
<b>3 points of contact decal fitted.</b>	Yes		Low
<b>No visible signs of excessive lubricant leakage.</b>	No		Low
<b>Operator's Station clear of Debris ( e.g. Cans of paint, grease cartridges, chains, drink bottles, eskies, quick hitch safety pins etc).</b>		Responsibility of operator.	
<b>Appropriate footwear to be worn at all times.</b>		Responsibility of operator/owner.	

#### Ergonomic

Can anyone be injured due to seating design, repetitive body movement or posture, excessive effort, poor workplace or plant design causing mental or physical stress, lack of consideration for human behavior, poor lighting or other factors not mentioned?

Issue	Status	Comments/Issues	Risk Rating
<b>Seat in useable condition.</b>	Yes	Seat to be adjusted to ensure correct posture to avoid straining during machine operation.	Low
<b>Operation Controls (Levers &amp; Pedals in operators Reach).</b>	Yes		Low
<b>Seat Adjustment Controls Operational.</b>	Yes		Low
<b>Control Labels readable.</b>	Yes		Low

#### Suffocation

Can anyone be suffocated due to lack of oxygen, or atmospheric contamination?

Issue	Status	Comments/Issues	Risk Rating
<b>Not excessive Engine fumes.</b>	No	engine emission standards: (EG tier IV)	Low
<b>Door &amp; Window seals well maintained (Where applicable).</b>	N/A		
<b>If working in an enclosed area operator to ensure there is adequate ventilation present, in some cases a further Risk Assessment may need to be carried out prior to operating.</b>		Responsibility of operator/owner	

#### High Temperature or Fire

Can anyone come into contact with objects at high temperature or injured by fire?

Issue	Status	Comments/Issues	Risk Rating
<b>Exhaust in adequate condition.</b>	Yes		Low

Issue	Status	Comments/Issues	Risk Rating
Hot Hazardous exhaust decal.	Yes		Medium
Fire Extinguisher in the Equipment and maintained to AS 1851-2012.	Yes	Responsibility of operator/owner to ensure fire extinguisher is maintained to AS1851.	Medium
Hot Surface Warning Decals.	Yes		Medium
Service History up to date.	Yes	Responsibility of owner.	Medium
Tank ID Label Fitted	Yes		Low
All areas exposed to high temperatures to be clear of combustible materials.		Responsibility of operator.	

#### Thermal Comfort

Can anyone suffer ill-health due to exposure to high or low temperatures?  
 Can the operator get sun burnt?

Issue	Status	Comments/Issues	Risk Rating
Ventilation.		Responsibility of operator to ensure adequate ventilation prior to and during operation of machine.	
Air Conditioning.	N/A		
PPE & Sunscreen provided.		Responsibility of operator/owner.	
Sun protection decal fitted.	Yes		Medium

#### Noise

Is the noise level of the piece of equipment at a point that could damage your hearing?

Issue	Status	Comments/Issues	Risk Rating
PPE Protection Decals.	Yes		Medium
Hearing protection supplied.		Responsibility of operator.	

#### Documentation

Is the following documentation in the cab or readily available to the operator?

Issue	Status	Comments/Issues	Risk Rating
Operators Manual with the equipment.	Yes		Low
Attachment Risk Assessment (if applicable).		Responsibility of operator.	
Service & Maintenance Records to be up to date.	Yes	Responsibility of owner to ensure service & maintenance is carried out by a suitably qualified mechanic in line with manufacturer requirements for maintenance or repair.	Low

Issue	Status	Comments/Issues	Risk Rating
Plant Pre-Start Check List.		Responsibility of operator to ensure pre start is carried out daily, prior to use of the machine.	
Safe Working Method Statement and procedures in place.		Responsibility of operator/owner.	
Traffic Management in place (if applicable).		Responsibility of operator/owner.	

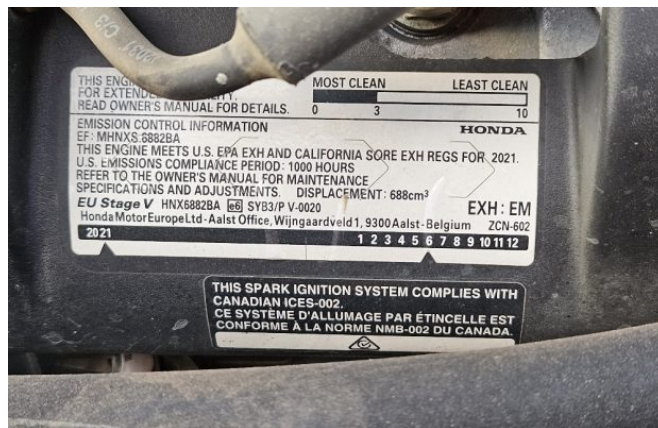
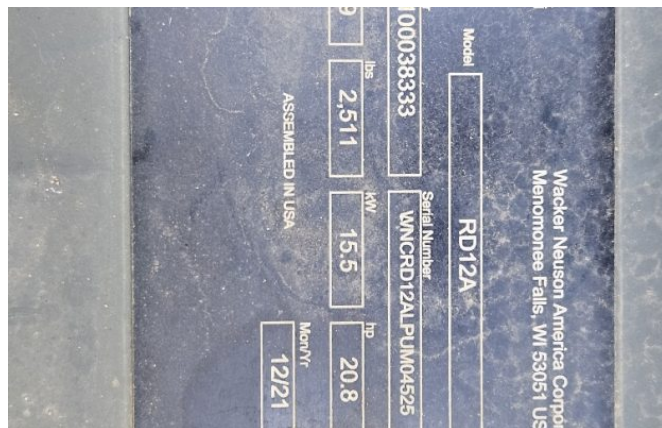
## Report Images

### Machine Photo Images



## Report Images

### Data Plate Images





## Report Images

### ROPS Plate Images



## Report Images

### Hour Meter Images





## Report Images

### Service Sticker Images



## Important Notes

- Service History it to be up to date and maintained by the Hiree, Owner and operator.
- The above assessment is based on the machine only not the site or work environment it may be used. This is the responsibility of the operator to ensure safe work practices and Pre-Start Checks are followed.
- All operators to be trained prior to use of machinery.
- All attachments used with the machine need to have data plates.
- If any piece of machinery is used as a crane this needs to be adhered to the Crane Act, including understanding Load Charts for the machine and swivel hook to lift.

## Hirer / Operator Acknowledgment:

I the undersigned acknowledge that I have read and understand the risk management report described above. I also acknowledge that I have received a copy of this risk management report:

### Client Signature

Rahni - May 21st, 2024

We the undersigned, confirm that the Plant Risk Assessment included in this report has been explained and its contents are clearly understood. We also confirm that our required qualifications to undertake this activity are current. We also clearly understand that the controls in this Plant Risk Assessment must be applied as documented, otherwise work is to cease immediately.

Name:	Qualification:	Signature:	Date:	Employer:



**Report Number:** #003604  
**Inspection Date:** May 21st, 2024  
**Expiry Date:** May 21st, 2025

© Copyright. This report has been produced for the sole use of JR Safety and Compliance Pty Ltd and the named client and the report or the information contained therein may not be copied or reproduced either in part or in whole by any means whatever for any purpose other than for the information of the named client without the prior written consent of JR Safety and Compliance Pty Ltd.

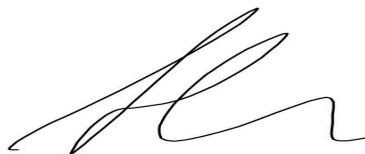
## Fleet Service Job

**Cert No:** PK55529 **Date Completed:** 29/08/2022  
**Site Name:** Depot  
**Fleet No:** R277 **Serial No:** WNCRD12ALPUM04525  
**Engineer:** Leigh E **Work Completed:** 50 Hour Service  
**Notes:** 50hr inspection

Test	Value	Result
Engine Oil Level		Pass
Coolant Level		Fail
Cooling System		Fail
Intake Hoses		Pass
Air Filters		Pass
Air Pre Cleaner		Pass
Water Pump & Pulley Bearings		Fail
Drive Belts		Fail
Exhaust System		Pass
Throttle		Pass
Overall Engine Condition		Pass
Transmission Oil Level		Pass
Differential Oil Levels		Pass
Final Drive Oil Levels		Pass
Drum Oil Level		Pass
Drum Drive Reduction Oil Level		Pass
Axle Seals		Fail
Vibe Drum Rubber		Pass

**Signed By:** Leigh

**Signature:**

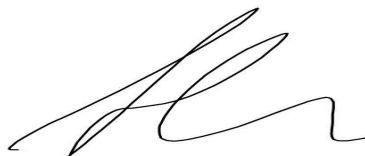


## Fleet Service Job

**Cert No:** PK55529**Date Completed:** 29/08/2022**Site Name:** Depot**Fleet No:** R277**Serial No:** WNCRD12ALPUM04525**Engineer:** Leigh E**Work Completed:** 50 Hour Service

Drive Motors	Pass
Tyre Condition & Pressure	Fail
Check for Loose Wheel Nuts	Fail
Rims	Fail
Overall Condition	Pass
Head Lights Low and High Beam	Pass
Brake Lights	Fail
Indicators	Fail
Work Lights	Pass
Reverse Lights	Pass
Park Lights	Fail
Beacons	Pass
Aerials	Fail
Battery Terminals	Pass
Battery Clamps	Pass
Battery Fluid	Pass
Jump Start Receptacle	Fail
Horn	Fail
Reverse Alarm	Pass
Interior Light	Fail

---

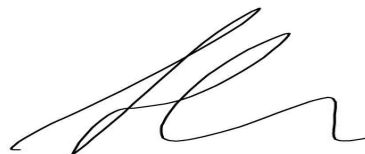
**Signed By:** Leigh**Signature:**

## Fleet Service Job

**Cert No:** PK55529**Date Completed:** 29/08/2022**Site Name:** Depot**Fleet No:** R277**Serial No:** WNCRD12ALPUM04525**Engineer:** Leigh E**Work Completed:** 50 Hour Service

Windscreen Wipers	Fail
Windscreen Washer & Fluid	Fail
Instrument Cluster	Pass
UHF Radio	Fail
AM/FM Radio	Fail
Emergency Stops	Pass
Wiring	Pass
Hydraulic Oil Breather	Pass
Hydraulic Oil Level	Pass
Rams	Pass
Hoses	Pass
Pins and Bushes	Pass
Control Levels	Pass
Travel Lever Linkage	Pass
Centre Hitch	Pass
Scraper Rubber	Pass
(Pad foot) Scraper	Fail
(Pad foot) Wear Plates	Fail
Steering Chains Condition	Fail
Door & Hold Open Latches	Fail

---

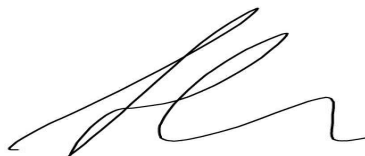
**Signed By:** Leigh**Signature:**

## Fleet Service Job

**Cert No:** PK55529**Date Completed:** 29/08/2022**Site Name:** Depot**Fleet No:** R277**Serial No:** WNCRD12ALPUM04525**Engineer:** Leigh E**Work Completed:** 50 Hour Service

Windows & hold open latches	Fail
Mirrors	Fail
Floor Mat	Fail
Seat Condition	Pass
Seat Belt	Pass
Door Locks Operational	Fail
Arm Rests	Fail
Seat Function	Pass
Air Conditioning	Fail
Air Conditioning Louvres	Fail
Drive Modes (Rabbit & Tortoise)	Pass
Air Conditioning Filters	Fail
Operators Manual	Pass
Risk Assessment	Pass
First Aid Kit and Eye Wash	Pass
Vibe Modes (high & low)	Pass
Panels	Pass
Handrails	Pass
Information Stickers	Pass
Focus Hire Stickers	Pass

---

**Signed By:** Leigh**Signature:**



## Fleet Service Job

**Cert No:** PK55529

**Date Completed:** 29/08/2022

**Site Name:** Depot

**Fleet No:** R277

**Serial No:** WNCRD12ALPUM04525

**Engineer:** Leigh E

**Work Completed:** 50 Hour Service

Ladders and Steps

Pass

Belly Plates

Pass

Engine Cover

Pass

Grease Lines and Blocks

Pass

Grease Machine

Pass

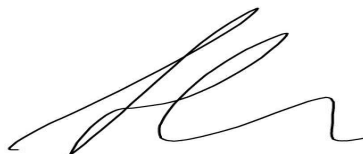
Fire Extinguisher(s)

Pass

---

**Signed By:** Leigh

**Signature:**



## Fleet Service Job

**Cert No:** FM78890**Site Name:** Depot**Fleet No:** R277**Engineer:** Jess**Notes:** completed service as per checklist, completed fire extinguisher check and tag**Date Completed:** 8/01/2024**Meter Reading:** 103**Serial No:** WNCRD12ALPUM04525**Work Completed:** 100 Hour Service

Test	Value	Result
Check the external hardware.		Pass
Check the water filter.		N/A
Check the level of hydraulic oil		Pass
Check the condition of hydraulic hoses and connections		Pass
Check the electrical wiring and connections.		Pass
Check operation of the parking brake and make sure it engages.		Pass
Check operation of the neutral safety switch.		Pass
Check the seat belt.		Pass
Grease the articulated steering joint tie rod.		Pass
Grease the rear drum drive bearings.		Pass
Grease the exciter bearings.		Pass
Grease the steering cylinder ends.		Pass
Check the battery.		Pass
Clean the scraper bars		Pass
Clean the water filter.		Pass
Replace Spark plug		Pass
Check-adjust idle speed		Pass

**Signed By:** Jess Williams**Signature:**

## Fleet Service Job

**Cert No:** FM78890

**Site Name:** Depot

**Fleet No:** R277

**Engineer:** Jess

Check-adjust valve clearance

Replace fuel filter

**Date Completed:** 8/01/2024

**Meter Reading:** 103

**Serial No:** WNCRD12ALPUM04525

**Work Completed:** 100 Hour Service

Pass

Pass

---

**Signed By:** Jess Williams

**Signature:**

