

# VOLVO CONSTRUCTION EQUIPMENT MATRIS REPORT

Machine model L250G	SerialNo 1104	Operating Hours 19542	Reading Date 21/11/2024
	Dealer SMH Equipment	Report Issuer	
Contact name Wyatt	Technician wyatt	Primary Application Shot Rock	
Site Richie Brothers	Workorder	Ground Condition	

MATRIS Reading, Summary / Recommendation



Machine model	SerialNo	Operating Hours	Reading Date
L250G	1104	19542	21/11/2024

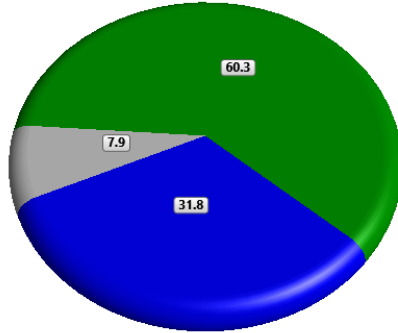
Main equipment	Type	Equipment
	Tyre size/class	
	Main Attachment	
	Extra Counterweight	
	Ballast	
	Chains	
	Boom Suspension System	
	Attachment Interface	
	Volume m3 (yd3) / Area m2 (ft2)	
	Attachment make	
	Brake	
	Transmission	



Machine model	SerialNo	Operating Hours	Reading Date
L250G	1104	19542	21/11/2024

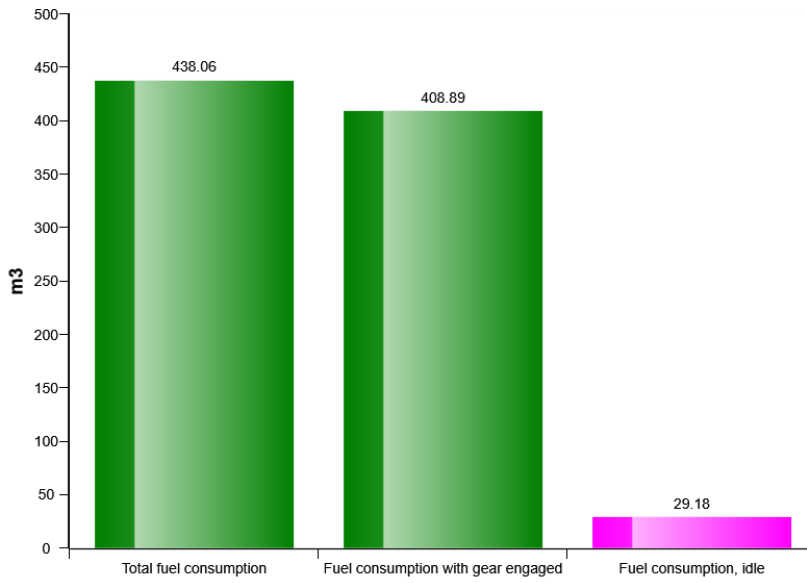
### Machine utilization (%)

Machine in motion Machine in working mode Idling



Total time (h) = 19459.1

### Fuel consumption

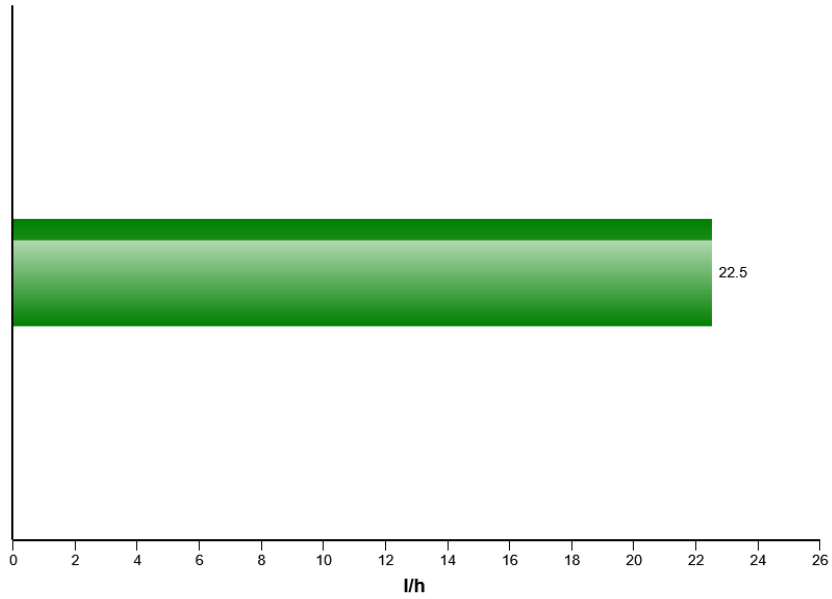


Total logged time (h) = 19464.31

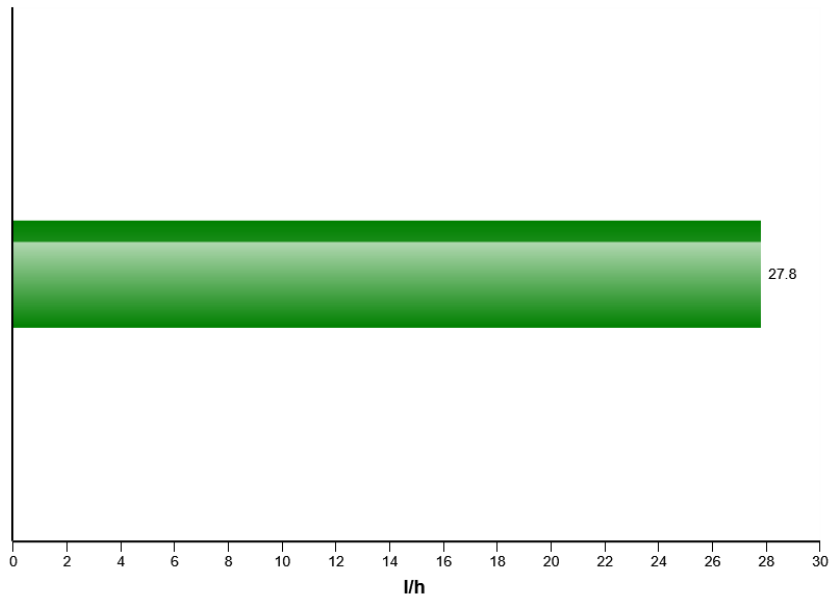


Machine model	SerialNo	Operating Hours	Reading Date
L250G	1104	19542	21/11/2024

### Average fuel consumption per hour

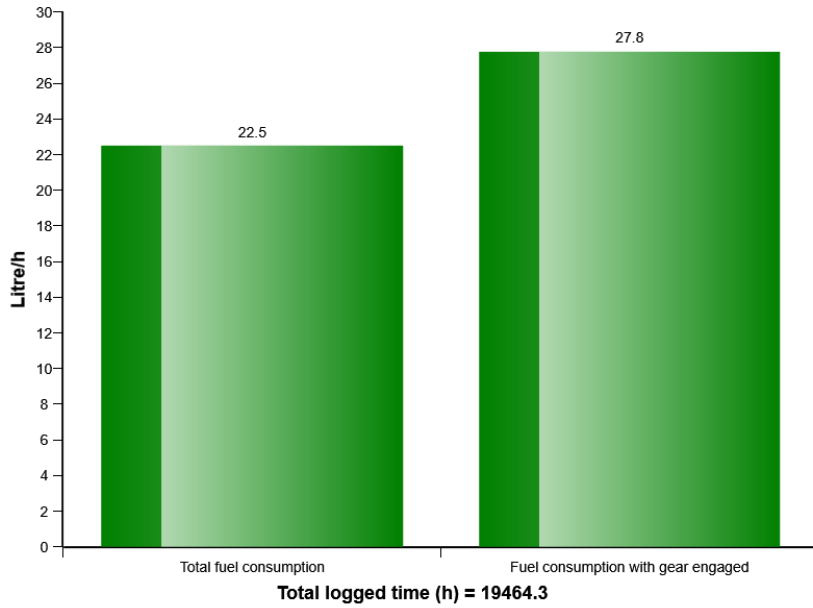


### Average fuel consumption per hour with gear engaged

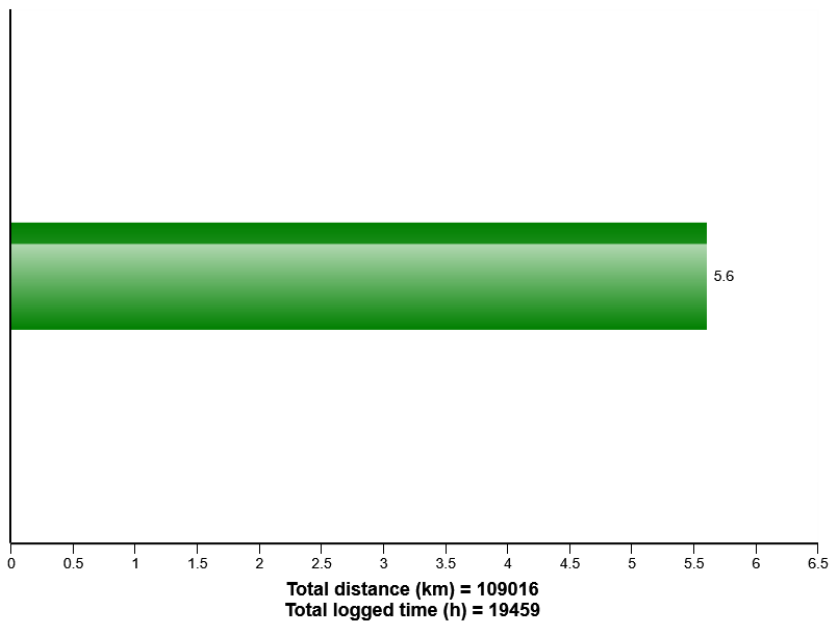


Machine model	SerialNo	Operating Hours	Reading Date
L250G	1104	19542	21/11/2024

### Average fuel consumption

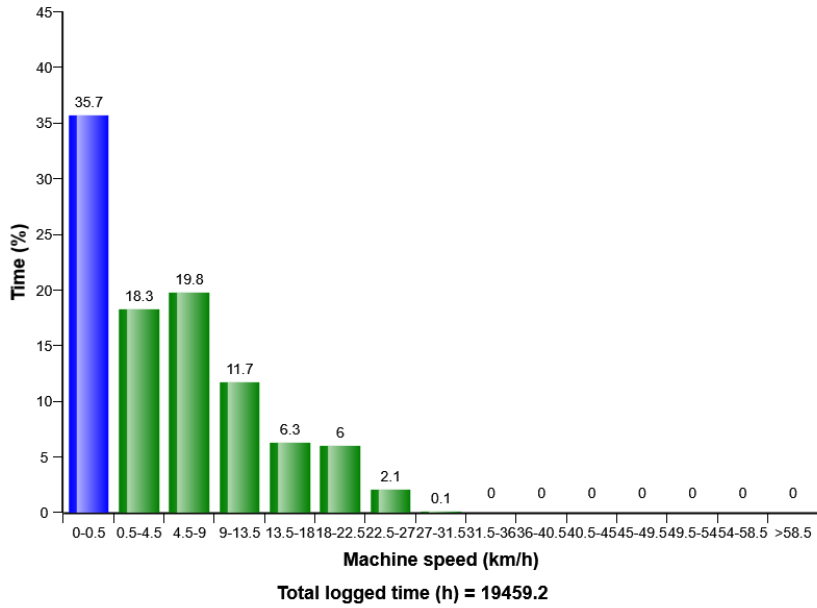


### Average speed and distance

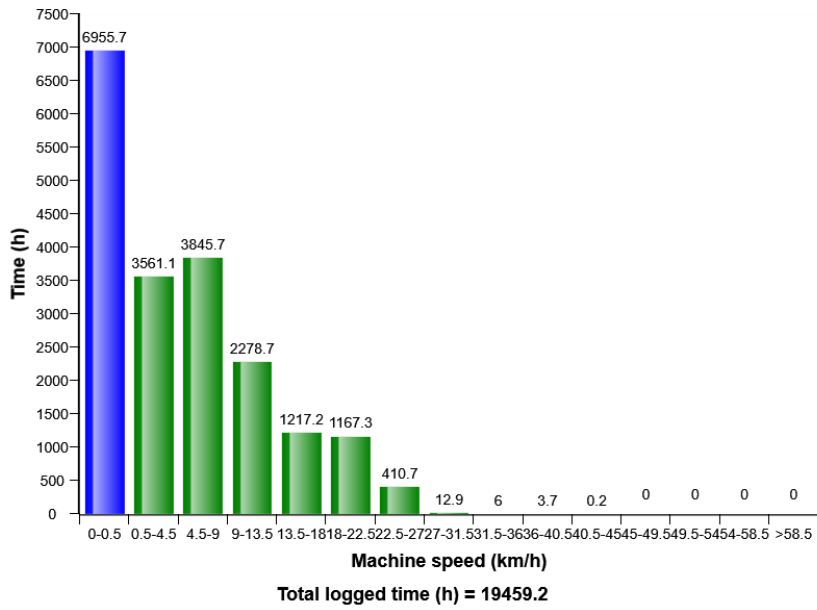


Machine model	SerialNo	Operating Hours	Reading Date
L250G	1104	19542	21/11/2024

### Machine speed, distribution (%)

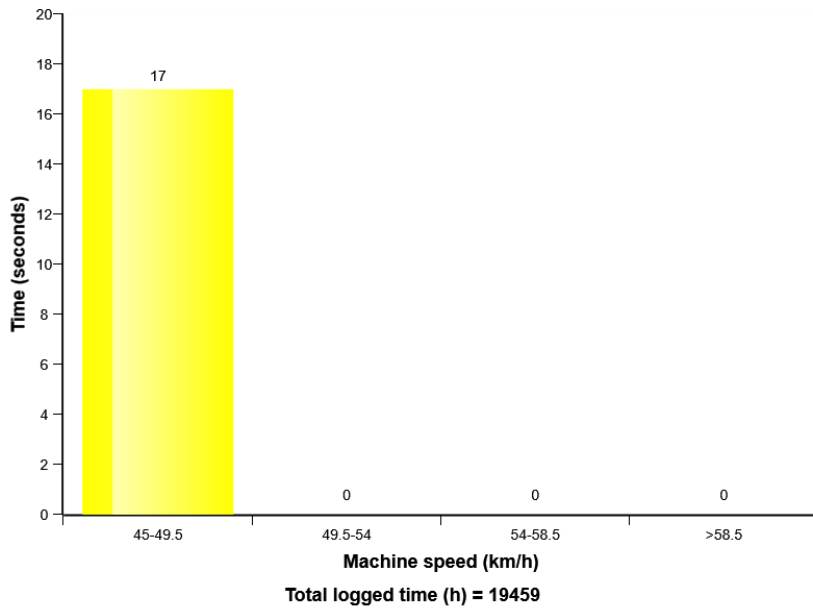


### Machine speed, distribution

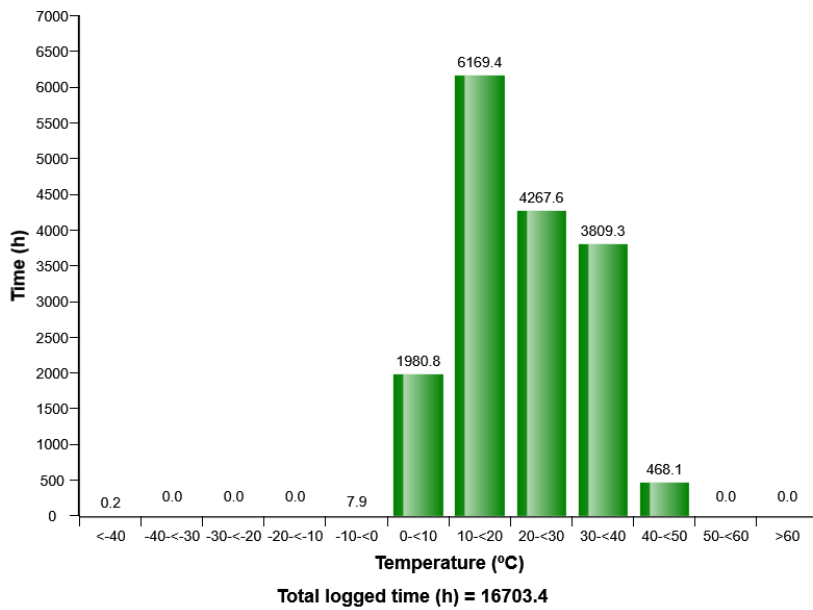


Machine model	SerialNo	Operating Hours	Reading Date
L250G	1104	19542	21/11/2024

### Machine overspeed >45 km/h distribution

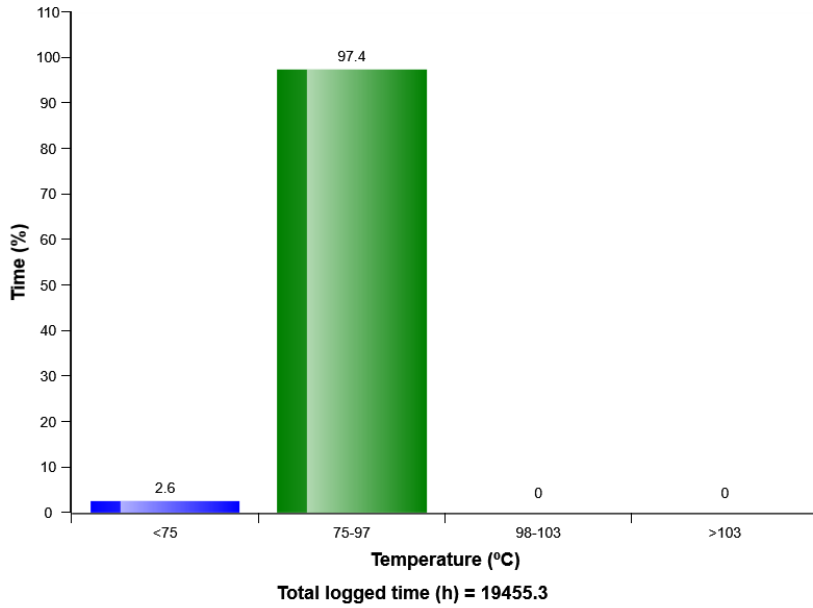


### Machine ambient temperature distribution (h)

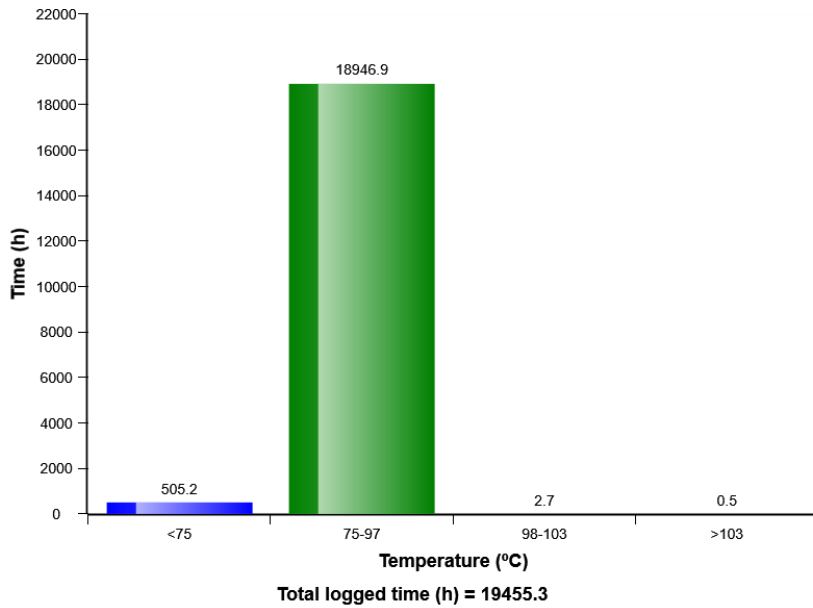


Machine model	SerialNo	Operating Hours	Reading Date
L250G	1104	19542	21/11/2024

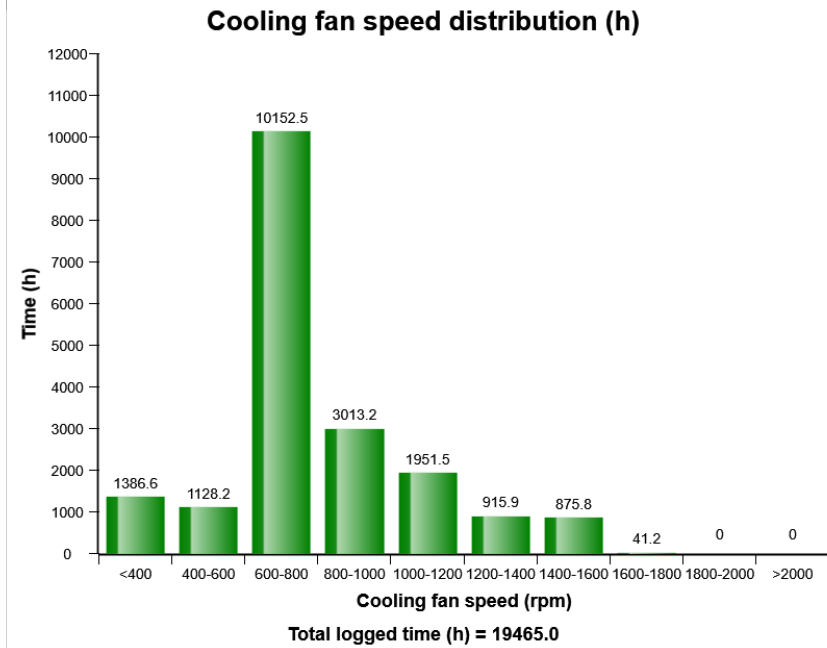
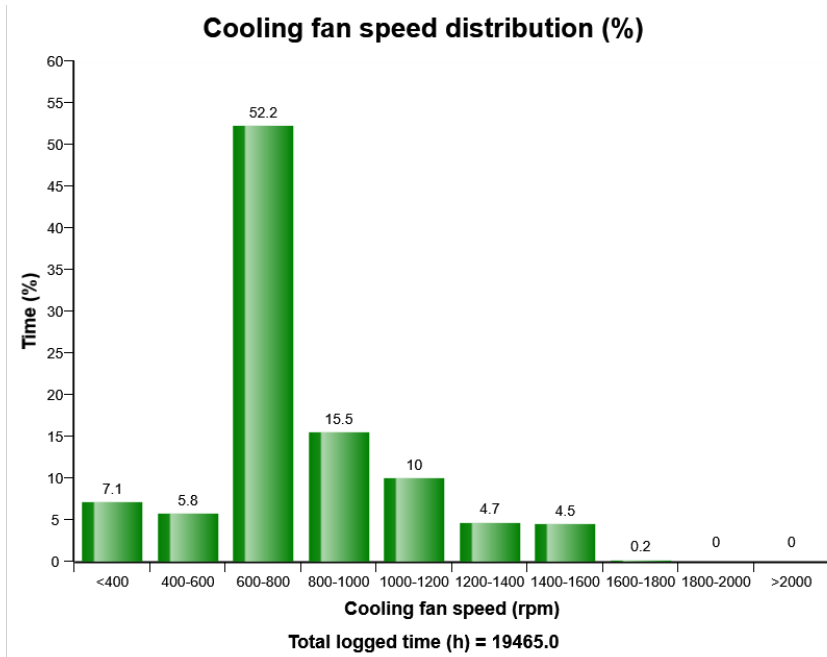
### Engine coolant temperature, distribution (%)



### Engine coolant temperature, distribution (h)

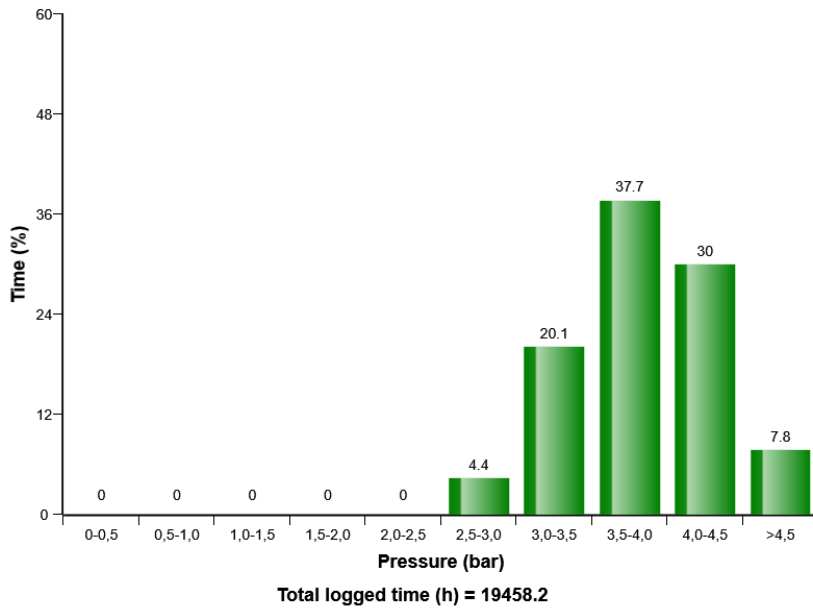


Machine model	SerialNo	Operating Hours	Reading Date
L250G	1104	19542	21/11/2024

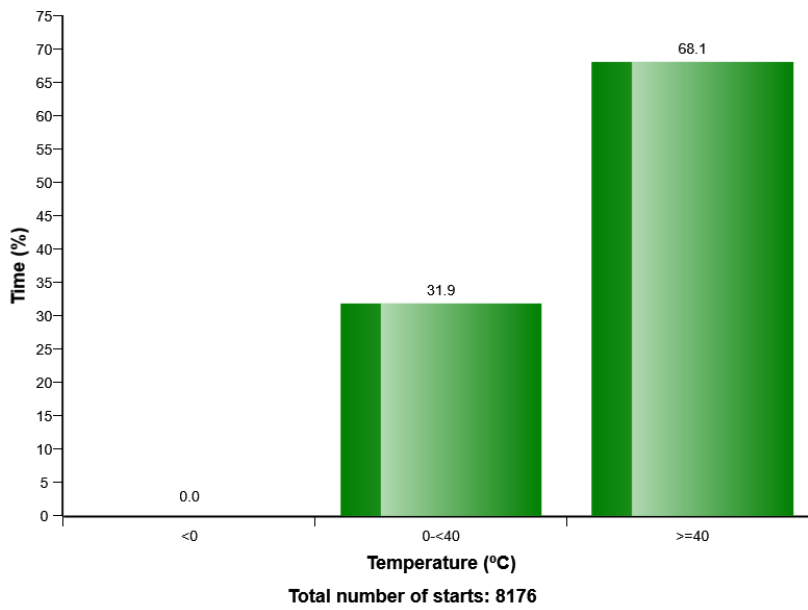


Machine model	SerialNo	Operating Hours	Reading Date
L250G	1104	19542	21/11/2024

### Engine oil pressure (%)

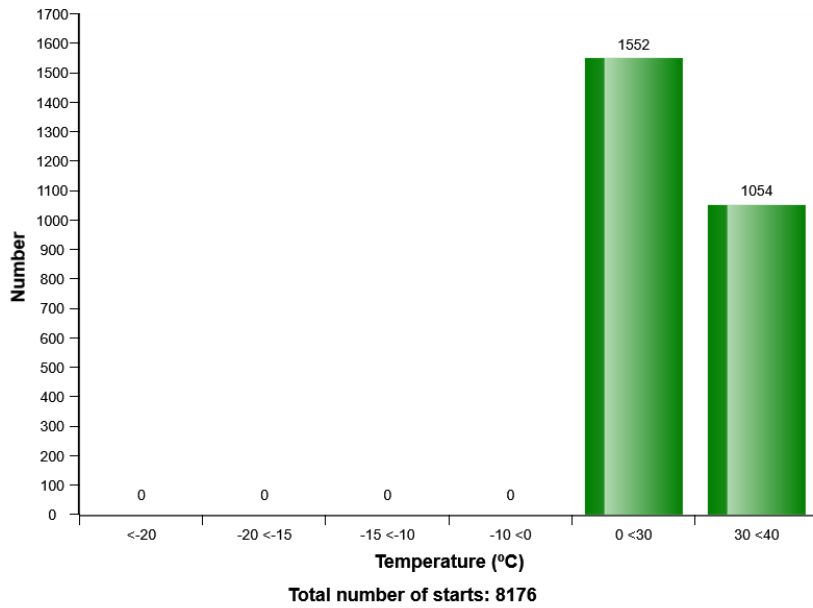


### Start at different engine coolant temperatures (%)

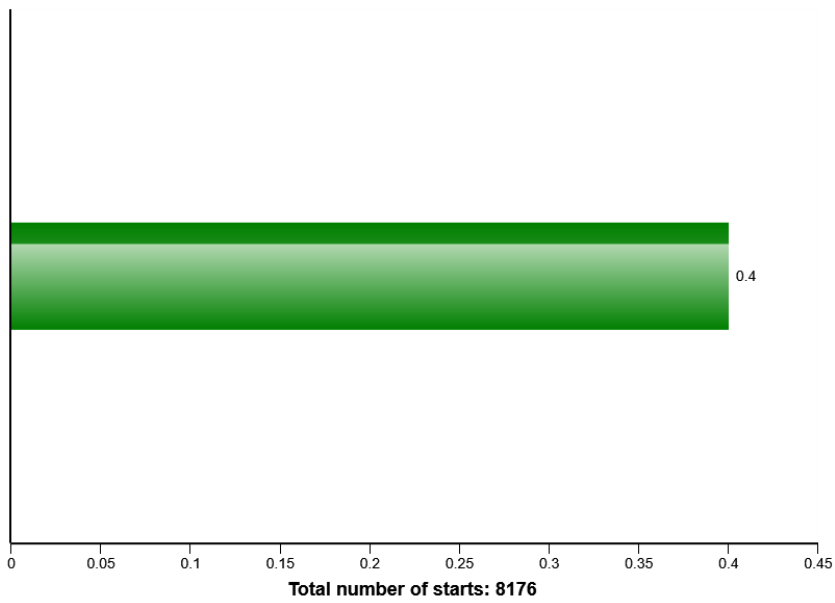


Machine model	SerialNo	Operating Hours	Reading Date
L250G	1104	19542	21/11/2024

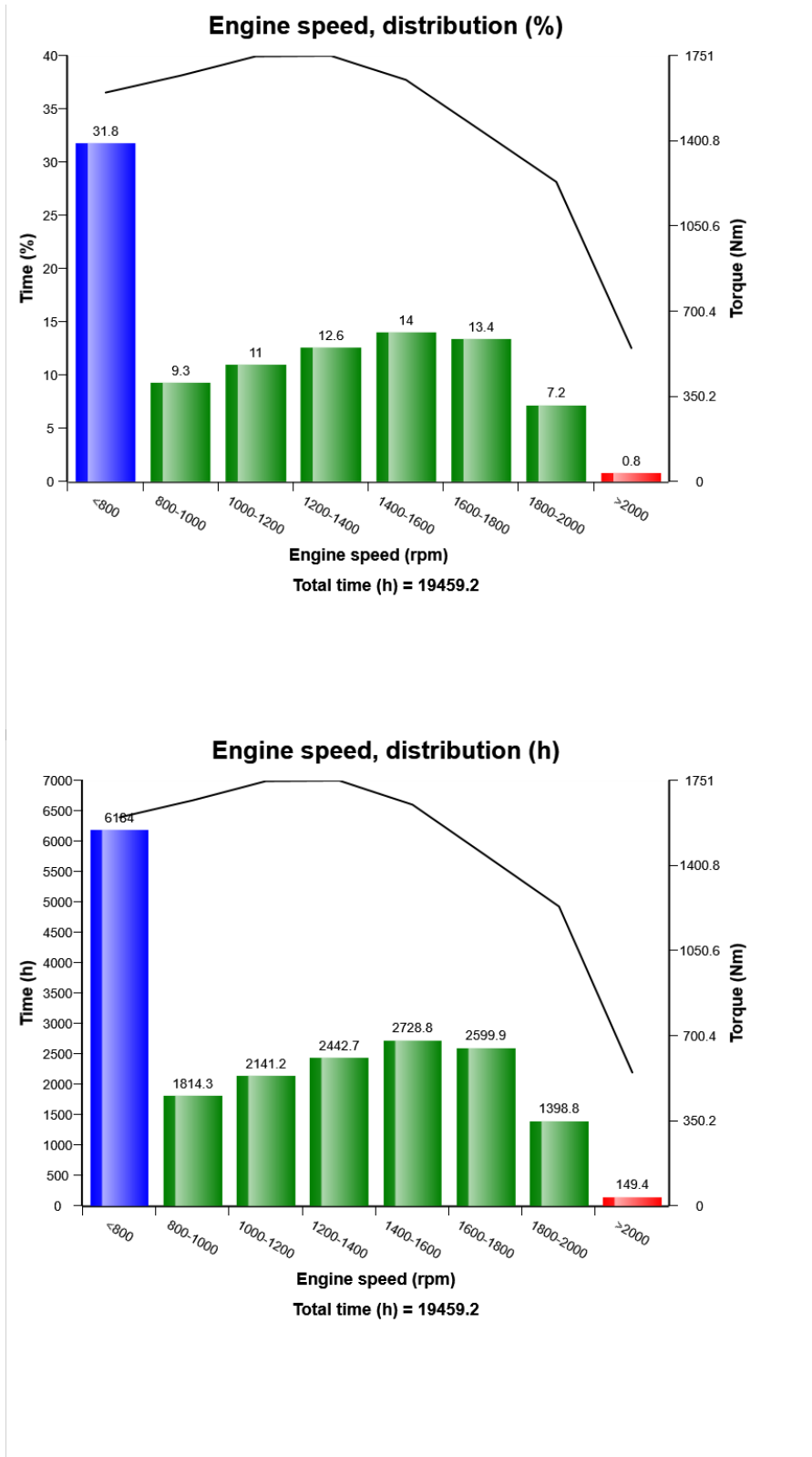
### Start at different engine coolant temperatures



### Average number of starts per hour



Machine model	SerialNo	Operating Hours	Reading Date
L250G	1104	19542	21/11/2024



Machine model	SerialNo	Operating Hours	Reading Date
L250G	1104	19542	21/11/2024

**Low engine oil level at start  
Total number of occurrences = 15**

Op hours	Year	Month	Day	Hour	Minute
* 0	2000	0	0	0	0
* 0	2000	0	0	0	0
* 0	2000	0	0	0	0
* 0	2000	0	0	0	0
* 0	2000	0	0	0	0
* 8150	2018	2	5	13	14
* 8218	2018	2	15	5	7
* 8218	2018	2	15	5	7
* 9311	2018	7	12	13	3
* 9443	2018	8	1	5	55
* 9647	2018	8	30	5	1
* 9967	2018	10	13	6	18
* 9967	2018	10	13	9	48
* 10345	2019	10	15	13	49
* 10618	2019	11	11	19	4
* 11006	2020	1	5	16	58
* 11074	2020	1	14	16	54
* 11257	2020	3	17	7	27
* 11378	2020	4	5	6	17
* 11647	2020	5	19	15	2



Machine model	SerialNo	Operating Hours	Reading Date
L250G	1104	19542	21/11/2024

**High engine coolant temperature  
Total number of occurrences = 15**

Op hours	Year	Month	Day	Hour	Minute	Duration (sec)	Extreme (°C)
0	2000	0	0	0	0	0	0
0	2000	0	0	0	0	0	0
0	2000	0	0	0	0	0	0
0	2000	0	0	0	0	0	0
0	2000	0	0	0	0	0	0
8147	2018	1	31	5	25	108	107
13797	2021	1	29	16	19	40	104
14563	2021	8	11	15	53	77	111
14740	2021	10	29	8	58	141	109
15079	2021	12	7	11	5	230	105
15090	2021	12	15	11	48	44	104



Machine model	SerialNo	Operating Hours	Reading Date
L250G	1104	19542	21/11/2024

Op hours	Year	Month	Day	Hour	Minute	Duration (sec)	Extreme (°C)
15095	2021	12	16	9	38	372	104
15096	2021	12	16	10	18	59	106
15122	2022	1	4	15	45	475	104
15242	2022	2	1	10	55	44	105
16761	2023	5	29	12	22	584	108
16770	2023	5	31	18	10	108	109
16770	2023	6	1	7	48	58	115
19273	2024	9	5	9	59	93	106
19273	2024	9	5	10	9	5	101



Machine model	SerialNo	Operating Hours	Reading Date
L250G	1104	19542	21/11/2024

**Low Air filter pressure (clogging)**  
**Total number of occurrences = 235**

Op hours	Year	Month	Day	Hour	Minute	Duration (sec)
14695	2021	10	17	14	48	9461
14698	2021	10	18	8	55	13197
14717	2021	10	22	13	31	816
14718	2021	10	23	7	26	21490
14725	2021	10	24	11	16	15484
15054	2021	12	3	9	58	13
15058	2021	12	3	13	49	2310
17931	2024	3	31	16	53	196
18044	2024	4	10	17	4	118
18113	2024	5	16	17	9	1111
18124	2024	5	17	16	14	181
18543	2024	6	25	17	16	281
18554	2024	6	26	17	14	223
19260	2024	9	3	16	55	145
19271	2024	9	4	16	41	1618
19393	2024	10	1	16	17	316
19405	2024	10	2	17	24	472
19415	2024	10	3	16	20	236
19426	2024	10	4	15	57	261
19428	2024	10	5	7	55	181



Machine model	SerialNo	Operating Hours	Reading Date
L250G	1104	19542	21/11/2024

**Water level warning in water separator  
Total number of occurrences = 201**

Op hours	Year	Month	Day	Hour	Minute	Duration (min)
18713	2024	7	21	14	2	0
18715	2024	7	21	16	11	0
18717	2024	7	22	6	10	1
18717	2024	7	22	6	17	1
18717	2024	7	22	6	20	0
18722	2024	7	22	13	26	1
18722	2024	7	22	13	45	0
18723	2024	7	22	14	5	0
18723	2024	7	22	14	43	2
18723	2024	7	22	14	39	0
18723	2024	7	22	14	35	1
18723	2024	7	22	14	2	0
18723	2024	7	22	14	7	1
18723	2024	7	22	14	15	1
18725	2024	7	22	16	18	1
18726	2024	7	23	6	8	0
18726	2024	7	23	6	13	0
18727	2024	7	23	6	22	0
18732	2024	7	23	12	20	0
18735	2024	7	23	15	22	0



Machine model	SerialNo	Operating Hours	Reading Date
L250G	1104	19542	21/11/2024

**Low voltage**  
**Total number of occurrences = 2**

Op hours	Year	Month	Day	Hour	Minute	Duration (sec)	Extreme value
18507	2024	6	22	12	32	1280	9.4
6217	2017	5	16	5	2	2508	12.2
0	2000	0	0	0	0	0	0.0
0	2000	0	0	0	0	0	0.0
0	2000	0	0	0	0	0	0.0
0	2000	0	0	0	0	0	0.0
0	2000	0	0	0	0	0	0.0
0	2000	0	0	0	0	0	0.0
0	2000	0	0	0	0	0	0.0
0	2000	0	0	0	0	0	0.0
0	2000	0	0	0	0	0	0.0
0	2000	0	0	0	0	0	0.0

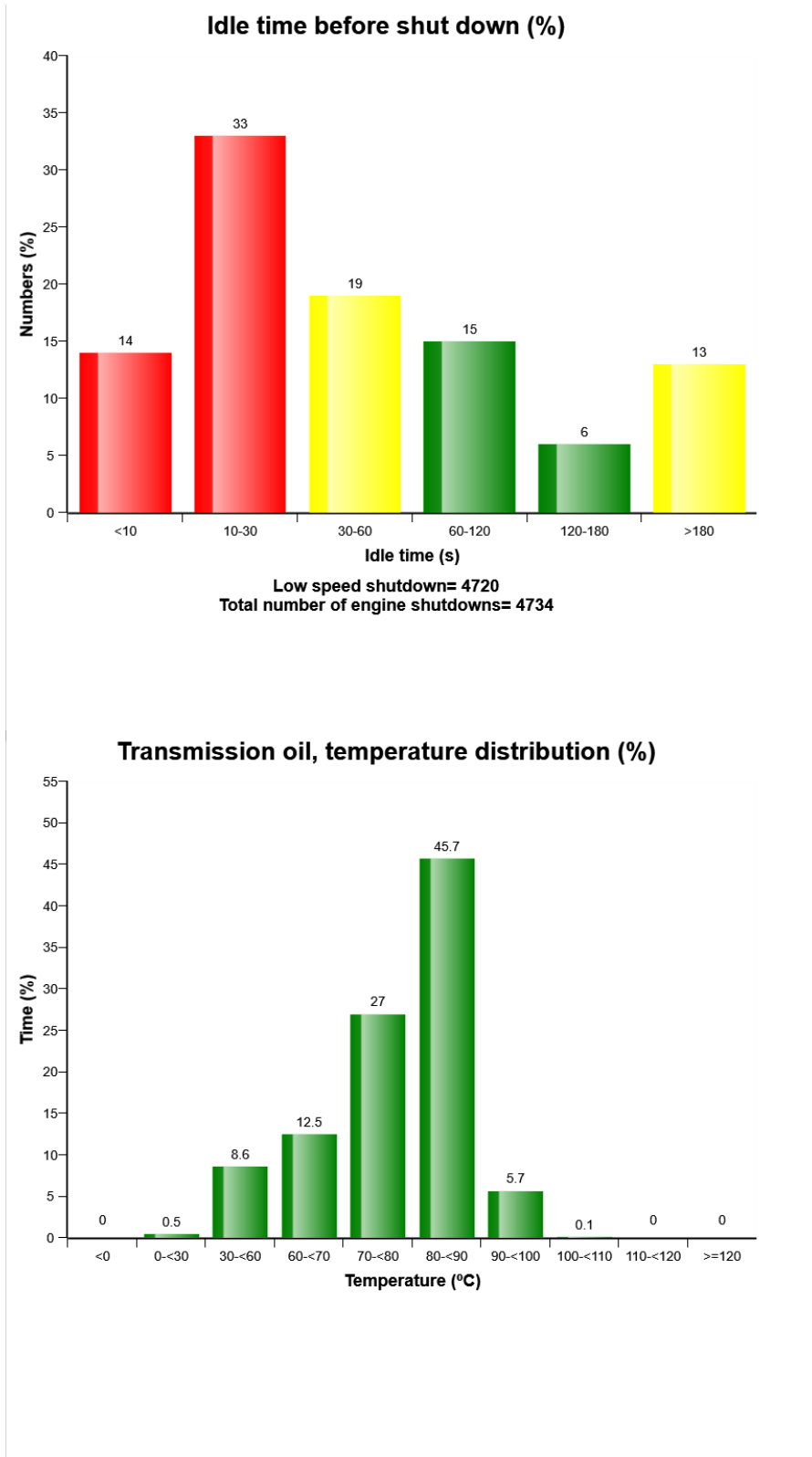


Machine model	SerialNo	Operating Hours	Reading Date
L250G	1104	19542	21/11/2024

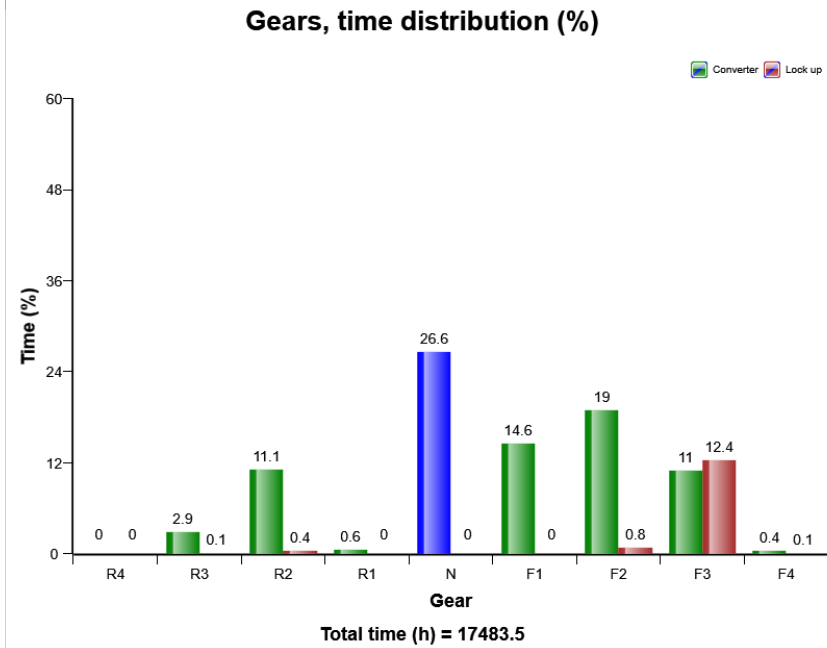
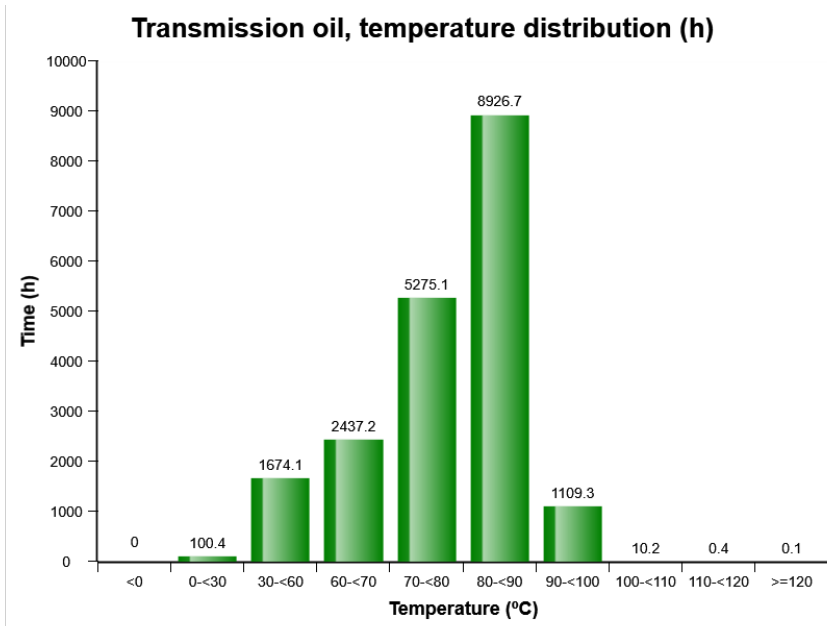
Op hours	Year	Month	Day	Hour	Minute	Duration (sec)	Extreme value
0	2000	0	0	0	0	0	0.0
0	2000	0	0	0	0	0	0.0
0	2000	0	0	0	0	0	0.0
0	2000	0	0	0	0	0	0.0
0	2000	0	0	0	0	0	0.0
0	2000	0	0	0	0	0	0.0
0	2000	0	0	0	0	0	0.0
0	2000	0	0	0	0	0	0.0
0	2000	0	0	0	0	0	0.0
0	2000	0	0	0	0	0	0.0



Machine model	SerialNo	Operating Hours	Reading Date
L250G	1104	19542	21/11/2024

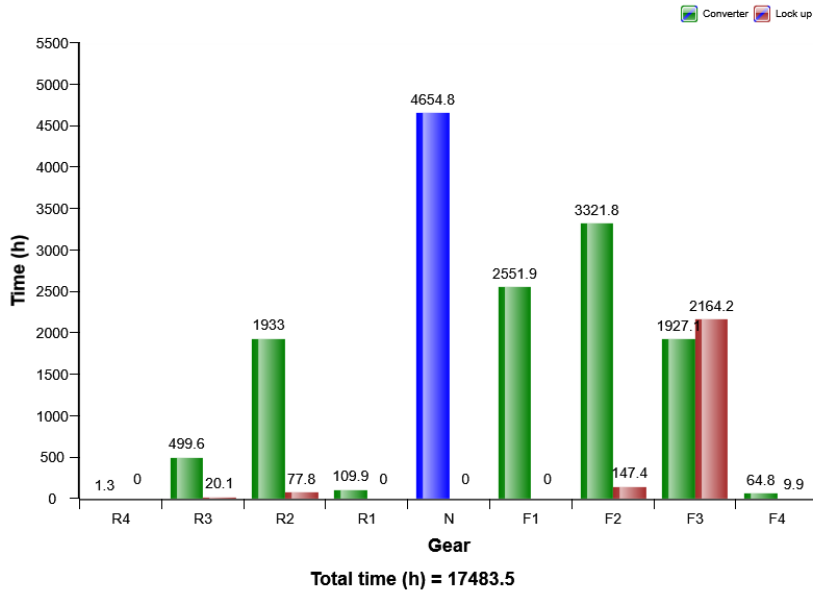


Machine model	SerialNo	Operating Hours	Reading Date
L250G	1104	19542	21/11/2024

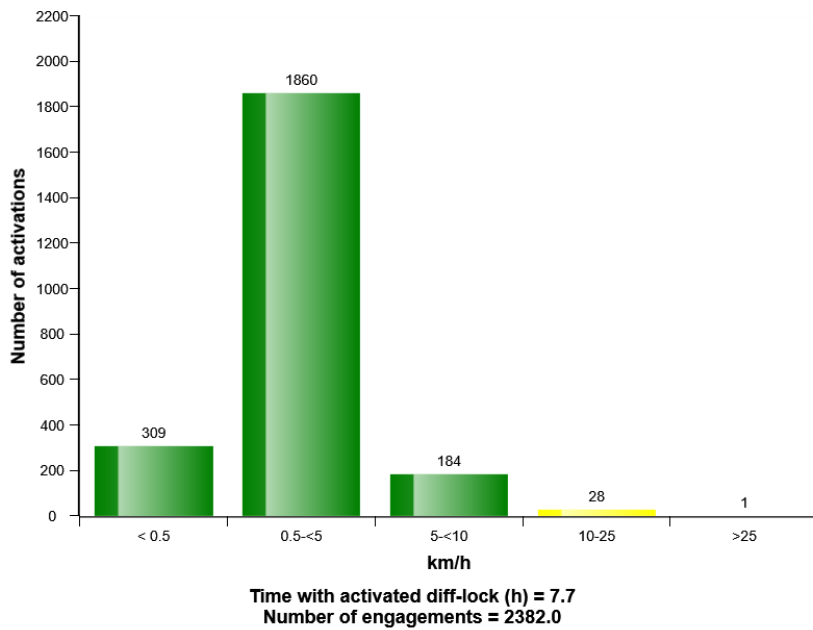


Machine model	SerialNo	Operating Hours	Reading Date
L250G	1104	19542	21/11/2024

### Gears, time distribution (h)

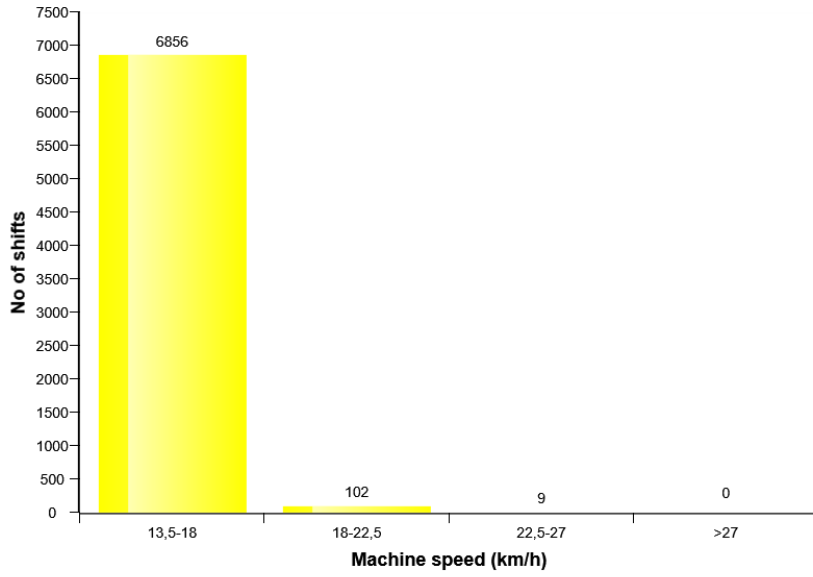


### Differential lock, usage



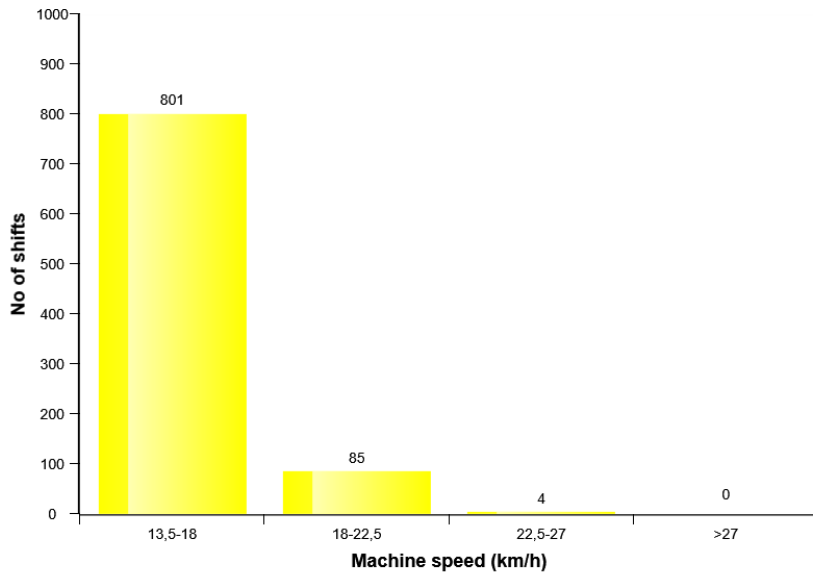
Machine model	SerialNo	Operating Hours	Reading Date
L250G	1104	19542	21/11/2024

### Machine speed when shifting R - F



Number of shifts R-F below 13,5 km/h = 1142749

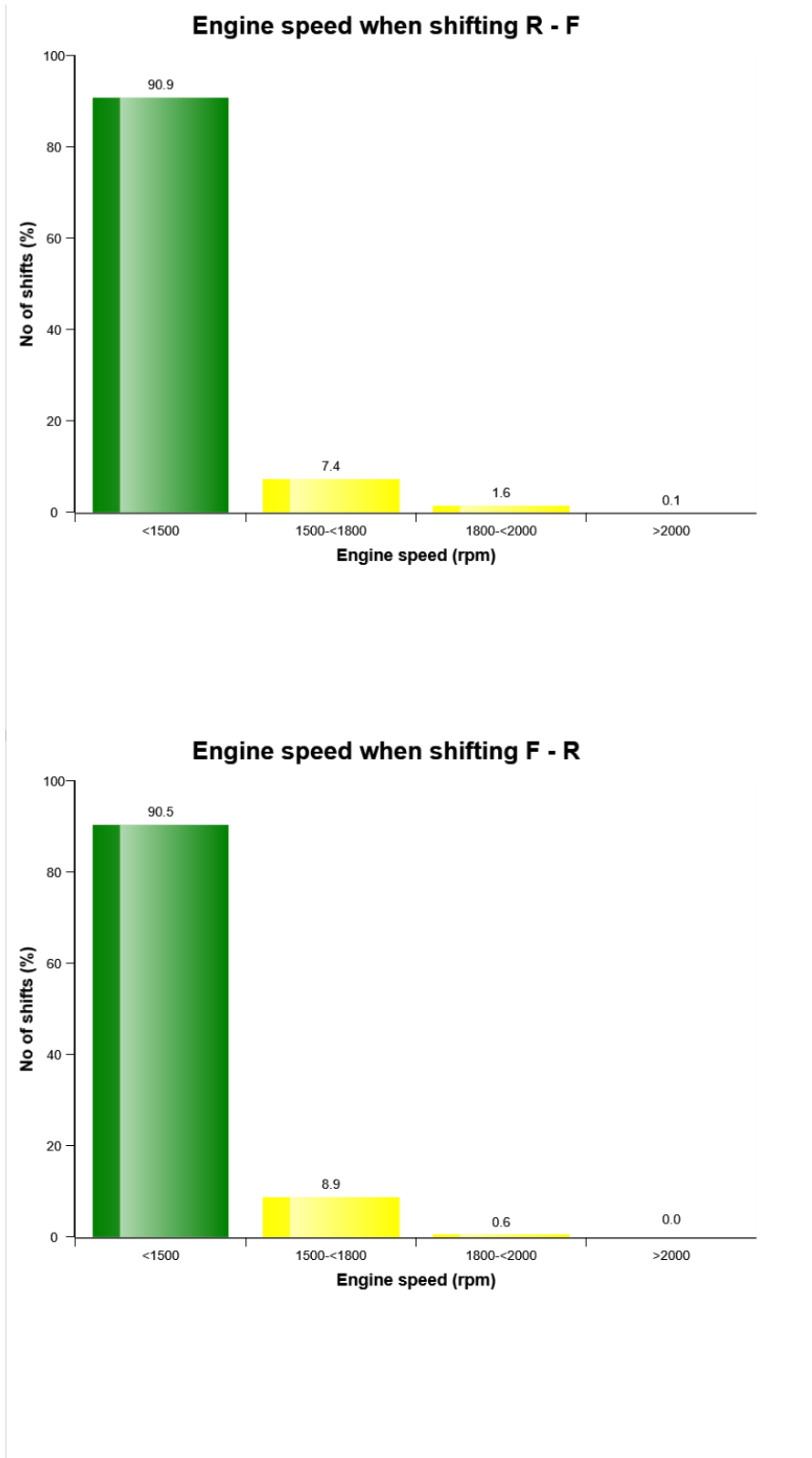
### Machine speed when shifting F - R



Number of shifts F-R below 13,5 km/h = 1061247

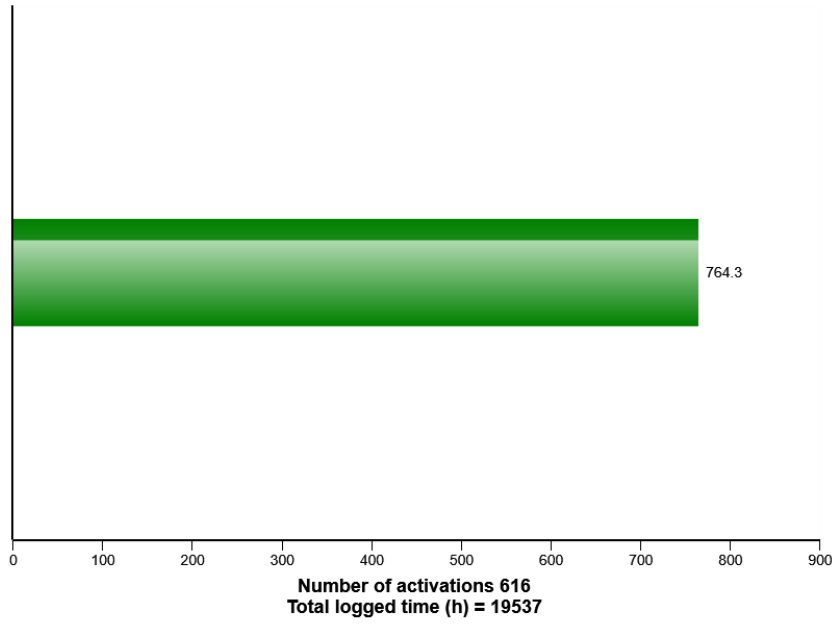


Machine model	SerialNo	Operating Hours	Reading Date
L250G	1104	19542	21/11/2024

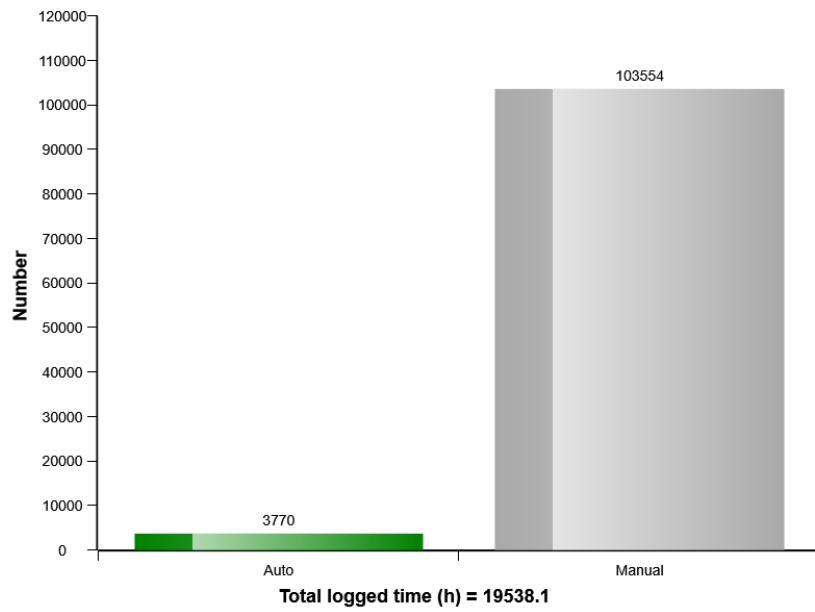


Machine model	SerialNo	Operating Hours	Reading Date
L250G	1104	19542	21/11/2024

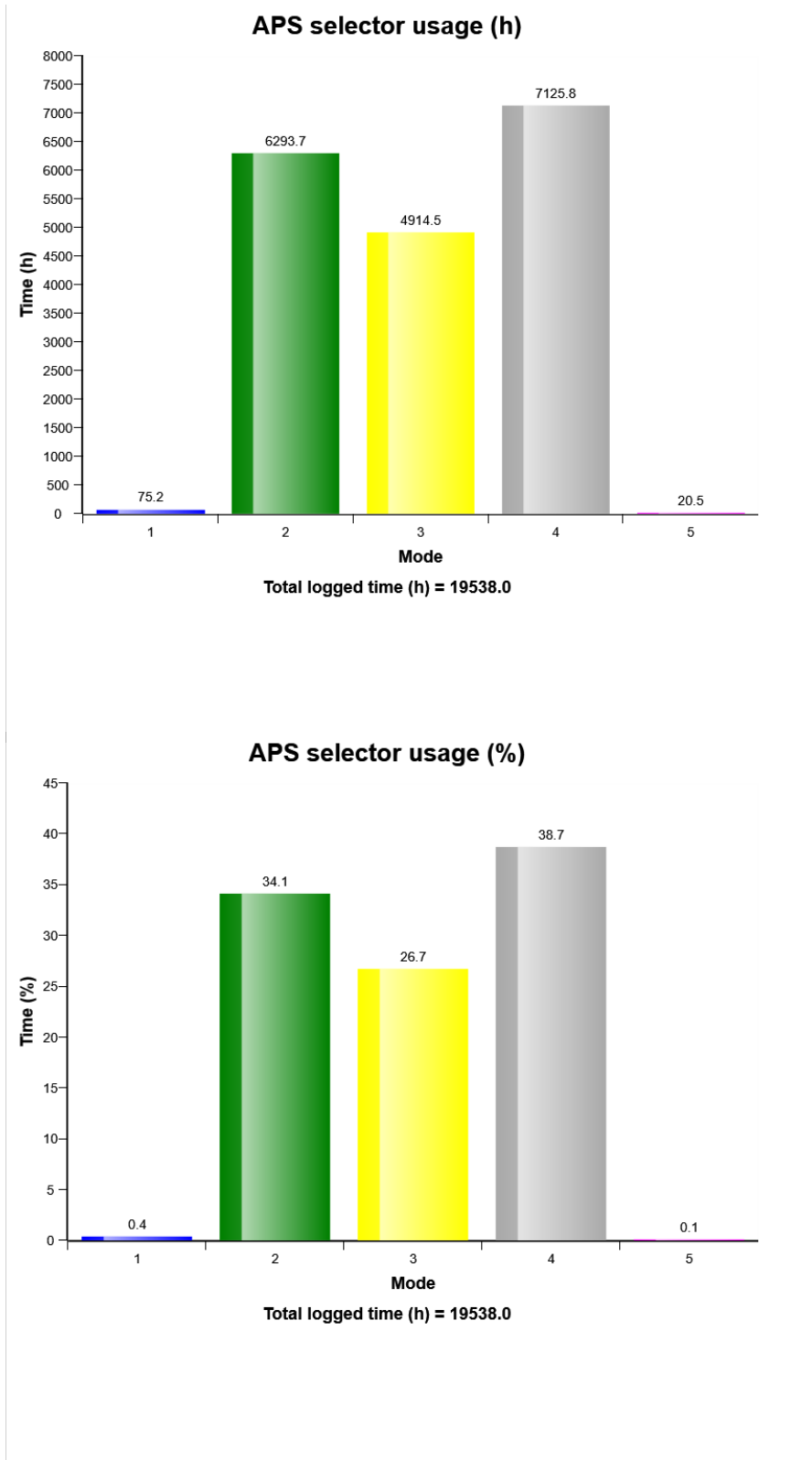
### Usage of transmission cut off



### Kick Down Usage



Machine model	SerialNo	Operating Hours	Reading Date
L250G	1104	19542	21/11/2024



Machine model	SerialNo	Operating Hours	Reading Date
L250G	1104	19542	21/11/2024

**Transmission oil temperature high  
Total number of occurrences = 21**

Op hours	Year	Month	Day	Hour	Minute	Duration (sec)	Extreme (°C)
8100	2018	1	22	11	27	14	112
8885	2018	5	11	16	56	18	115
10536	2019	11	3	20	35	9	110
10537	2019	11	3	21	34	11	110
10549	2019	11	4	19	30	16	111
10549	2019	11	4	19	54	11	111
10550	2019	11	4	20	45	16	111
10568	2019	11	5	20	28	31	114
10568	2019	11	5	20	26	14	111
10662	2019	11	13	13	7	302	137
10663	2019	11	13	13	43	217	122



Machine model	SerialNo	Operating Hours	Reading Date
L250G	1104	19542	21/11/2024

Op hours	Year	Month	Day	Hour	Minute	Duration (sec)	Extreme (°C)
10663	2019	11	13	13	56	497	125
10663	2019	11	13	14	27	407	128
10664	2019	11	13	15	33	274	122
10664	2019	11	13	15	43	142	111
10664	2019	11	13	16	27	57	113
15039	2021	12	1	17	34	10	111
17276	2023	9	28	4	2	11	111
17336	2023	10	1	2	14	10	111
17337	2023	10	1	2	18	16	112



Machine model	SerialNo	Operating Hours	Reading Date
L250G	1104	19542	21/11/2024

**Transmission oil pressure low  
Total number of occurrences = 8**

Op hours	Year	Month	Day	Hour	Minute	Duration (sec)	Extreme (bar)
0	2000	0	0	0	0	0	0.0
0	2000	0	0	0	0	0	0.0
0	2000	0	0	0	0	0	0.0
0	2000	0	0	0	0	0	0.0
0	2000	0	0	0	0	0	0.0
0	2000	0	0	0	0	0	0.0
0	2000	0	0	0	0	0	0.0
0	2000	0	0	0	0	0	0.0
0	2000	0	0	0	0	0	0.0
0	2000	0	0	0	0	0	0.0
0	2000	0	0	0	0	0	0.0
0	2000	0	0	0	0	0	0.0

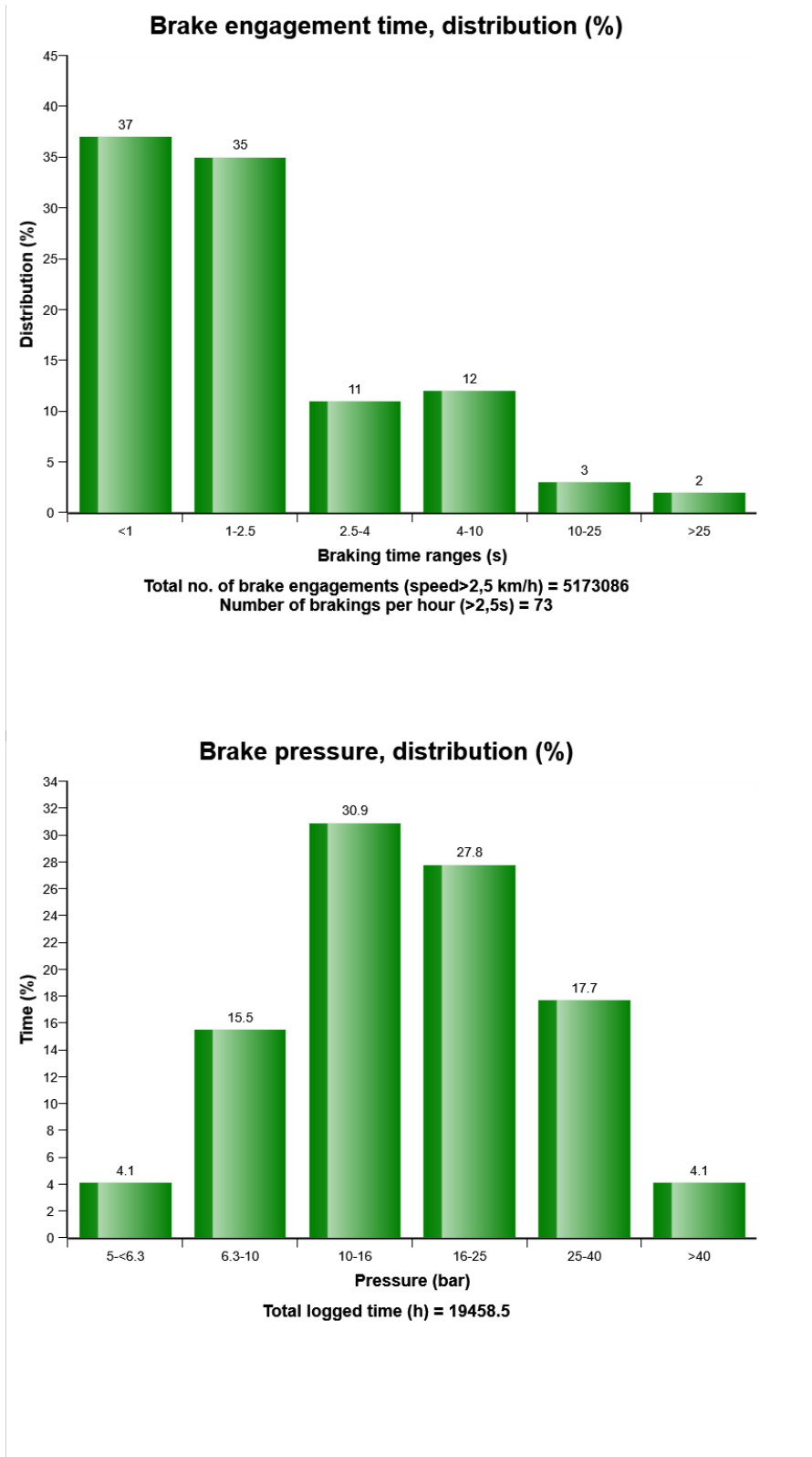


Machine model	SerialNo	Operating Hours	Reading Date
L250G	1104	19542	21/11/2024

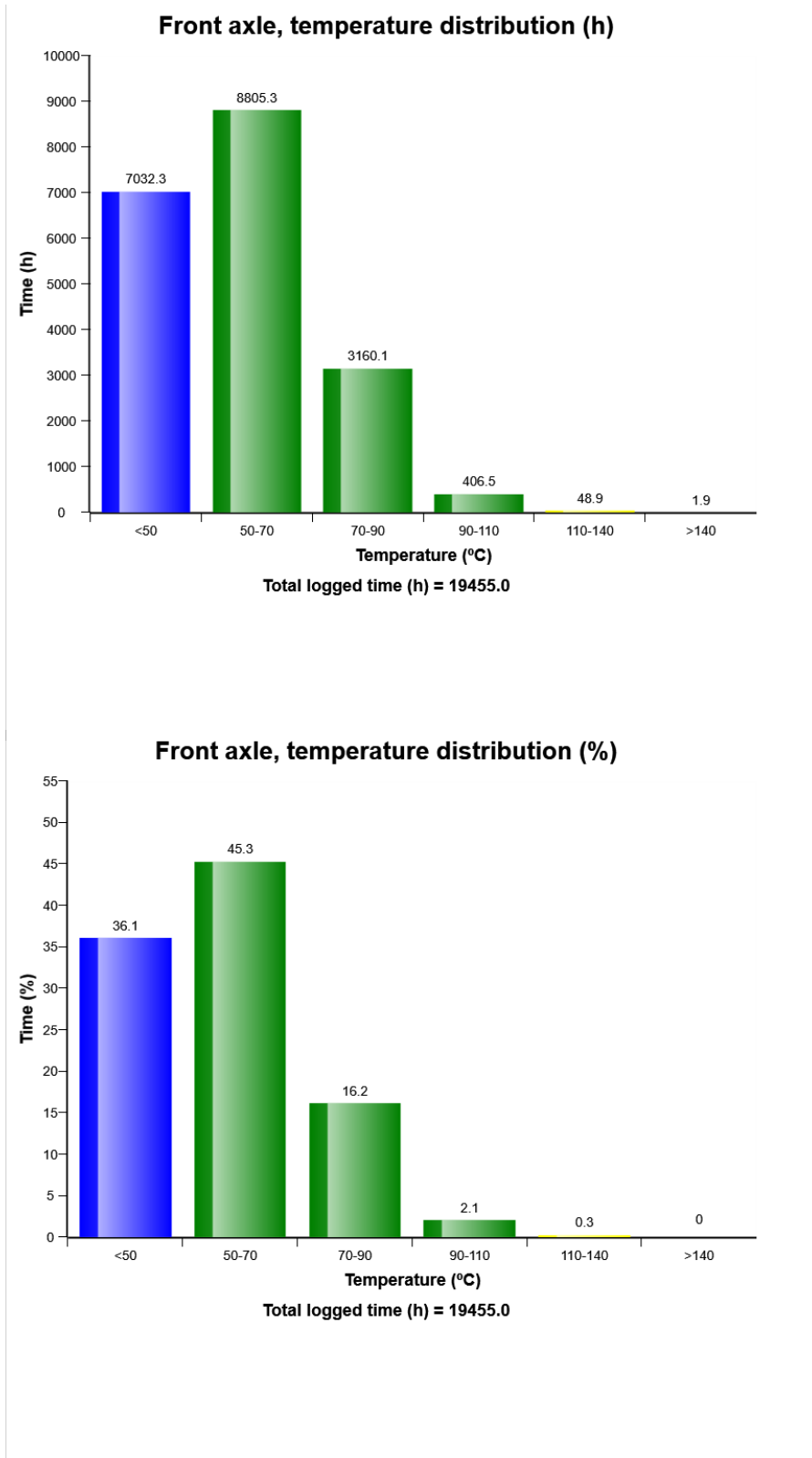
Op hours	Year	Month	Day	Hour	Minute	Duration (sec)	Extreme (bar)
0	2000	0	0	0	0	0	0.0
3980	2016	8	15	14	58	0	8.4
10272	2019	8	27	11	27	0	5.7
10665	2019	11	27	7	35	0	4.0
10668	2019	11	28	18	27	1	2.7
12008	2020	7	2	12	29	0	7.1
17184	2023	9	7	15	25	42	2.4
19539	2024	12	3	14	14	5	2.5
19539	2024	12	3	13	47	2	2.1



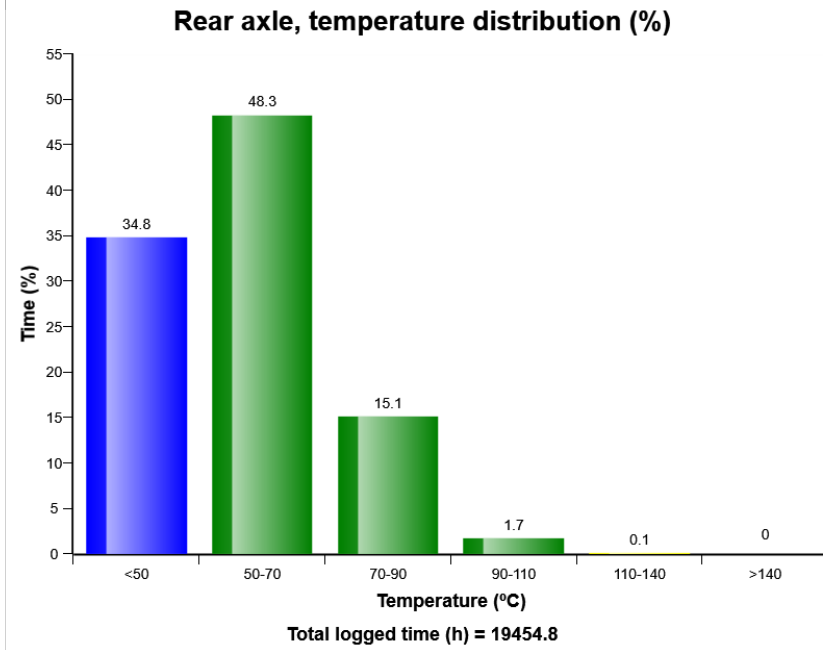
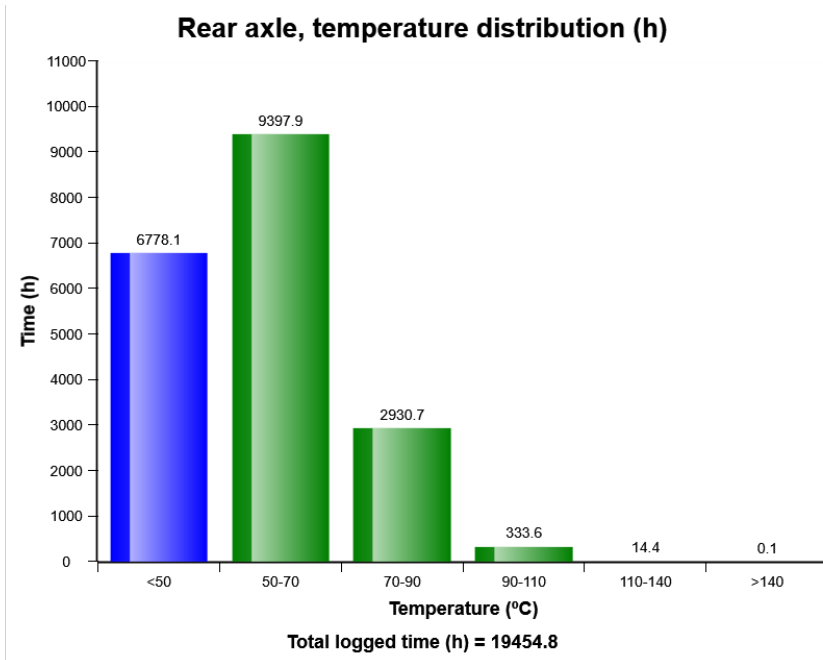
Machine model	SerialNo	Operating Hours	Reading Date
L250G	1104	19542	21/11/2024



Machine model	SerialNo	Operating Hours	Reading Date
L250G	1104	19542	21/11/2024

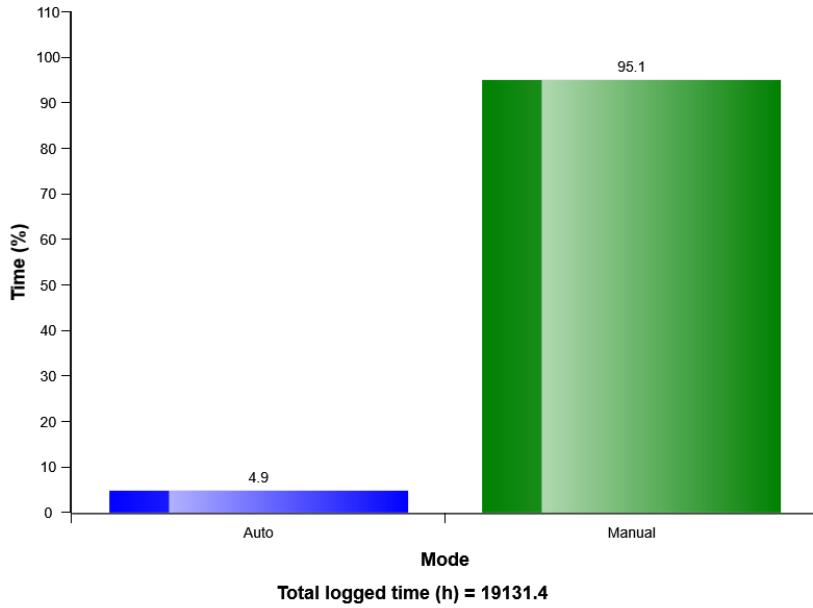


Machine model	SerialNo	Operating Hours	Reading Date
L250G	1104	19542	21/11/2024

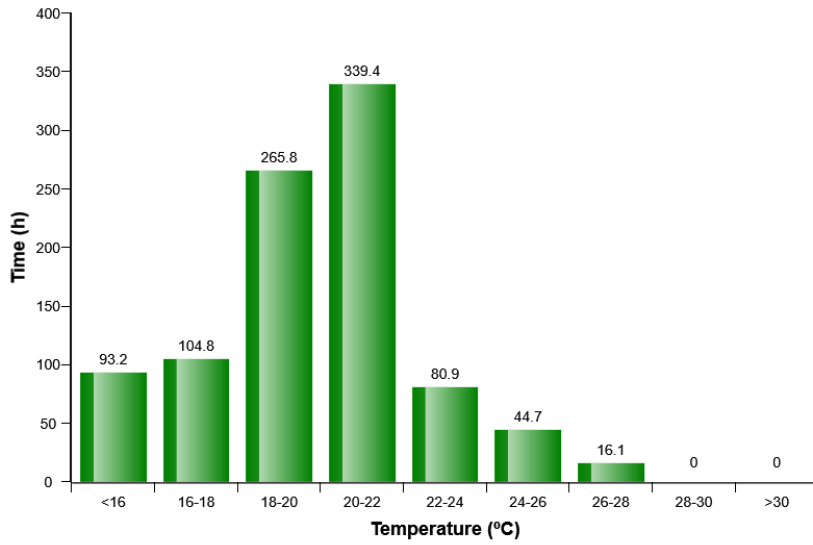


Machine model	SerialNo	Operating Hours	Reading Date
L250G	1104	19542	21/11/2024

### HVAC Auto - Manual mode selection distribution (%)

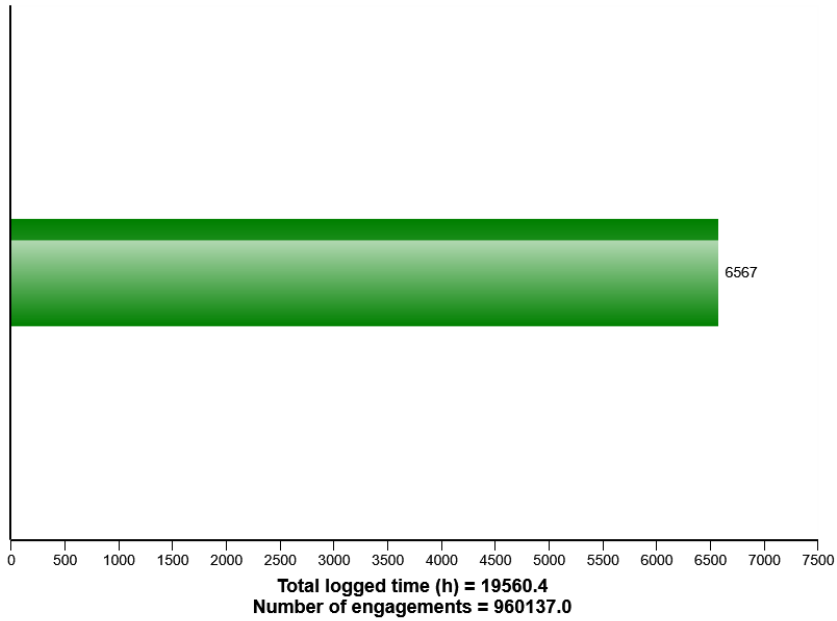


### HVAC air temperature setting in auto control mode distribution (h)

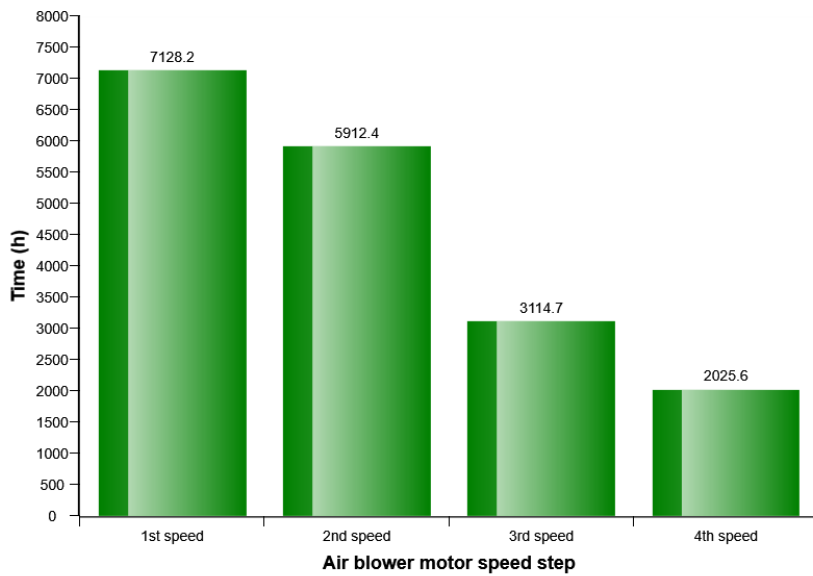


Machine model	SerialNo	Operating Hours	Reading Date
L250G	1104	19542	21/11/2024

### AC Compressor usage



### HVAC air blower motor speed in manual mode distribution (h)



Machine model	SerialNo	Operating Hours	Reading Date
L250G	1104	19542	21/11/2024

**AC High Pressure**  
**Total number of occurrences = 1200**

Op hours	Year	Month	Day	Hour	Minute	Duration (sec)	Extreme (°C)
15100	2021	12	20	14	40	70	42
15101	2021	12	21	8	52	119	39
15101	2021	12	21	8	49	105	38
15101	2021	12	20	15	36	204	41
15101	2021	12	21	8	31	143	36
15101	2021	12	20	15	51	34	43
15101	2021	12	21	8	47	32	38
15102	2021	12	21	12	9	133	43
15102	2021	12	21	14	41	43	41
15103	2021	12	23	11	43	96	37
15121	2022	1	4	15	48	113	35



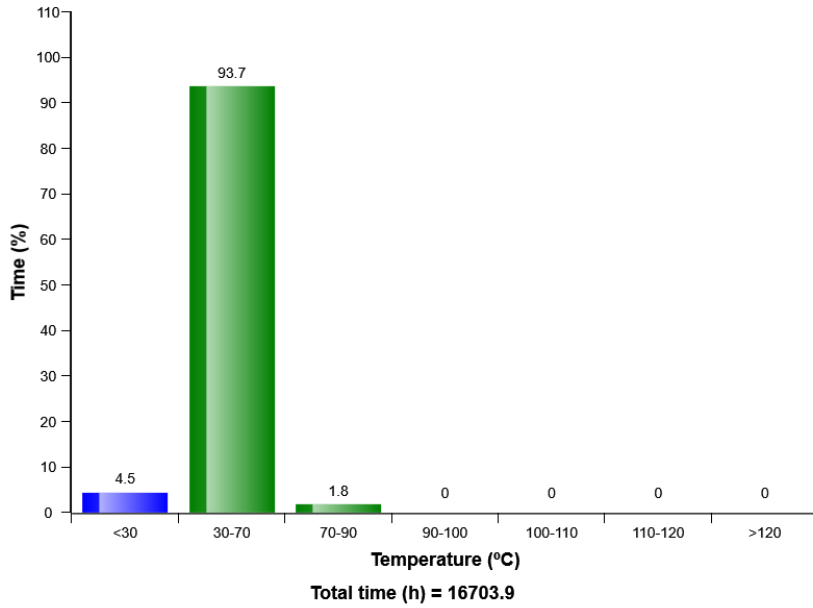
Machine model	SerialNo	Operating Hours	Reading Date
L250G	1104	19542	21/11/2024

Op hours	Year	Month	Day	Hour	Minute	Duration (sec)	Extreme (°C)
15129	2022	1	8	17	6	24	40
15200	2022	1	20	11	54	355	35
15209	2022	1	21	11	45	105	33
15209	2022	1	21	12	1	1969	33
15382	2022	2	25	12	33	24	37
15383	2022	2	25	13	3	41	36
15384	2022	2	25	14	4	-511296211	36
18683	2024	7	10	15	33	108	34
18686	2024	7	11	8	31	227	34

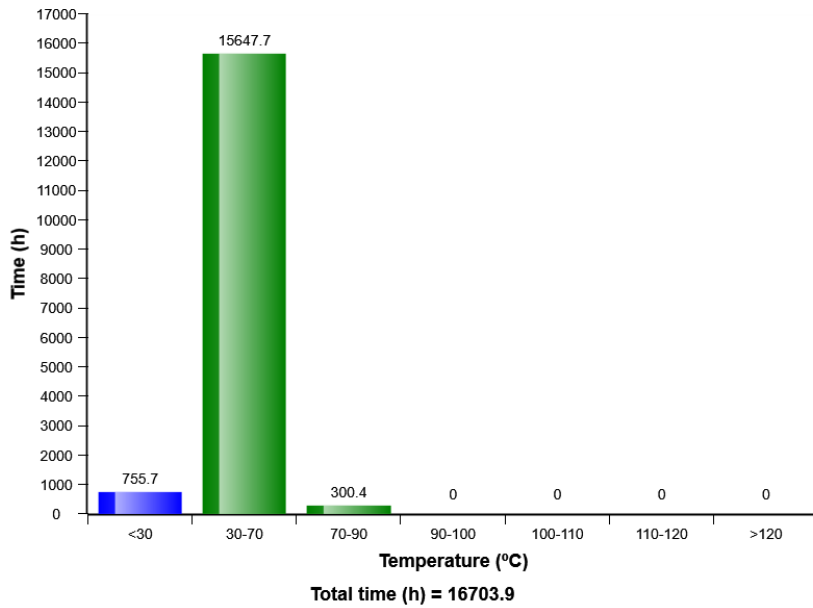


Machine model	SerialNo	Operating Hours	Reading Date
L250G	1104	19542	21/11/2024

### Hydraulic oil, temperature distribution (%)



### Hydraulic oil, temperature distribution (h)



Machine model	SerialNo	Operating Hours	Reading Date
L250G	1104	19542	21/11/2024

**Low Hydraulic Oil Level  
Total number of occurrences = 110**

Op hours	Year	Month	Day	Hour	Minute	Duration (seconds)
16877	2023	6	14	16	26	24
16877	2023	6	14	16	16	46
16877	2023	6	14	16	15	28
16877	2023	6	14	16	13	24
16877	2023	6	14	16	2	2
16877	2023	6	14	16	0	1
16877	2023	6	14	15	55	0
16877	2023	6	14	15	53	2
16877	2023	6	14	15	49	1
16877	2023	6	14	16	23	28
16877	2023	6	14	16	44	3



Machine model	SerialNo	Operating Hours	Reading Date
L250G	1104	19542	21/11/2024

Op hours	Year	Month	Day	Hour	Minute	Duration (seconds)
16877	2023	6	14	16	43	1
16877	2023	6	14	16	35	1
16877	2023	6	14	16	29	98
16877	2023	6	14	16	27	25
16877	2023	6	14	16	21	2
16878	2023	6	14	17	11	0
16878	2023	6	14	17	2	6
16878	2023	6	14	16	50	0
16878	2023	6	14	17	13	10



Machine model	SerialNo	Operating Hours	Reading Date
L250G	1104	19542	21/11/2024

