



Custom Track Service Percent Worn Chart

RYAN INCORPORATED CENTRAL

Model	D8T	Job Site	--		Inspection Date	16Oct25
Manufacturer	Caterpillar		<u>Left</u>	<u>Right</u>	Next Inspection Date	--
Serial Number	FMC00560	Track Sag (104.0 mm - 125.0 mm)	80.0 mm	95.0 mm	Next Inspection Hours	--
Reference Number	--	Frame Ext (max 152.0 mm)	104.0 mm	105.0 mm	<u>Underfoot Conditions</u>	
Hour Meter Reading	9640	Frame Ext %	68%	69%	Impact	Low
Hours Per Week	40.0	Dry Joints	--	--	Abrasion	Moderate
Total Odometer Reading	20703 miles	Link Roller System	69%	50%	Moisture	Low
Forward Odometer	11779 miles				Packing	Low
Reverse Odometer	8924 miles				Bushing Allowable Wear	Greater
Distance Per Week	144921.0 miles/week				Link Allowable Wear	Greater

Position			Part Number		Status		Date Installed		SMU Installed		Hours on Wear Surface		Measurement (mm)		Percent Worn	
Component	Left	Right	Left	Right	Left	Right	Left	Right	Left	Right	Left	Right	Left	Right	Left	Right
Link Assemblies		Left: 2726009		Right: 2726009				Pitch: 8.5 in (215.9 mm)				Sections: 44				
Track Link	8E4513	8E4513	Original	Original	15Oct25	15Oct25	0	0	9640	9640	37.8 (U)	41.9 (U)	68%	46%		
Condition: Scalping, Spalling								Condition: Scalping, Spalling								
Bushing (Int)	6Y3914	6Y3914	Original	Original	15Oct25	15Oct25	0	0	9640	9640	871.0 (T)	876.0 (T)	48%	88%		
Bushing (Ext)	6Y3914	6Y3914	Original	Original	15Oct25	15Oct25	0	0	9640	9640	11.2 (U)	11.9 (U)	52%	46%		
Condition: Turned								Condition: Turned								
Track Shoe		Left Width: 710.0mm						Right Width: 710.0mm								
	7G6454	7G6454	Original	Original	15Oct25	15Oct25	0	0	9640	9640	74.4 (U)	73.7 (U)	41%	43%		
Idlers																
Front	1111730	1111730	Original	Original	15Oct25	15Oct25	0	0	9640	9640	26.0 (D)	28.0 (D)	48%	64%		
Rear	1111729	1111729	Original	Original	15Oct25	15Oct25	0	0	9640	9640	27.0 (D)	22.0 (D)	56%	18%		
Track Roller																
Front	S	6206380	6206380	Original	Original	15Oct25	15Oct25	0	0	9640	9640	49.3 (U)	49.6 (U)	54%	53%	
2	S	6206380	6206380	Original	Original	15Oct25	15Oct25	0	0	9640	9640	44.6 (U)	50.3 (U)	70%	50%	
3	D	6206402	6206402	Original	Original	15Oct25	15Oct25	0	0	9640	9640	52.8 (U)	50.8 (U)	35%	44%	
4	D	6206402	6206402	Original	Original	15Oct25	15Oct25	0	0	9640	9640	49.9 (U)	50.8 (U)	49%	44%	
5	D	6206402	6206402	Original	Original	15Oct25	15Oct25	0	0	9640	9640	51.7 (U)	52.6 (U)	40%	36%	
6	D	6206402	6206402	Original	Original	15Oct25	15Oct25	0	0	9640	9640	51.5 (U)	52.6 (U)	41%	36%	
												54.6	53.1			

7	S	6206380	6206380	Original	Original	15Oct25	15Oct25	0	0	9640	9640	(U)	(U)	33%	39%
8	S	6206380	6206380	Original	Original	15Oct25	15Oct25	0	0	9640	9640	54.1 (U)	52.3 (U)	35%	42%
Sprocket															
		3145462	3145462	Original	Original	15Oct25	15Oct25	0	0	9640	9640	226.0 (T)	225.0 (T)	60%	64%

(U) Ultrasonic | (C) Caliper | (D) Depth Gauge | (T) Tape | (E) Estimated

Recommendations

--

Photos
Pre-Inspect



Pre-Inspect



Pre-Inspect



Pre-Inspect



Pre-Inspect

Measurements

Track Links

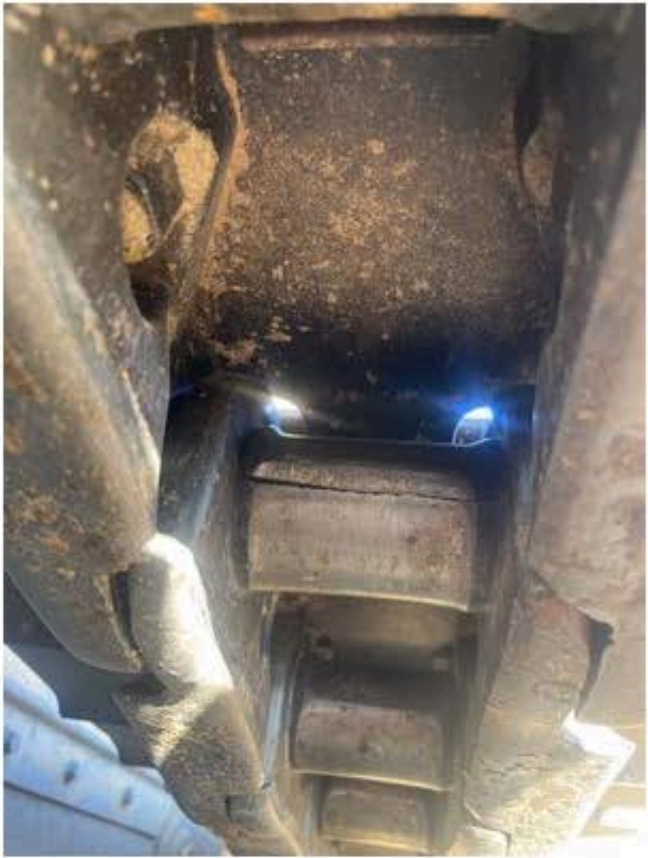


Left Track Link 1



Left Track Link 1

Bushings (External)



Right Bushings (External 1)

Track Rollers



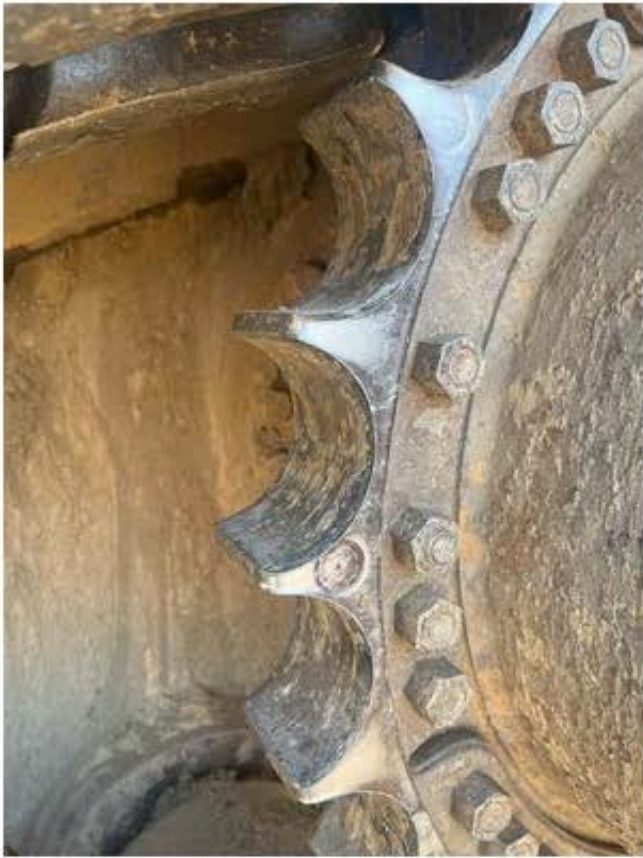
Left Track Roller 2



Right Track Roller 8

Sprockets

RYAN
CENTRAL



Left Sprocket



Right Sprocket



Right Sprocket